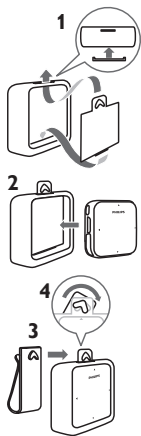


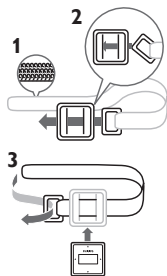
## Belt clip

- 1 Hold the plastic square and the silicone pouch so that the nibs of the square face the open front of the pouch.  
Insert the perforated tab of the square into the slot of the pouch as shown.
- 2 Insert the SA28 player into the pouch as shown.
- 3 Hold the belt clip upside down and push the protrusion through the perforation of the tab.
- 4 Turn the belt upright to ensure that the pouch is securely fastened.



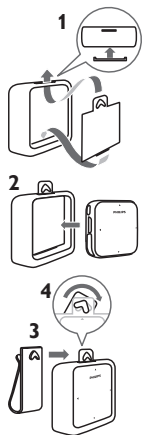
## Armband

- 1 Hold the silicone pouch with the open front facing you.  
Extend the armband and hold it with the Velcro side facing away from you.
- 2 Beginning from the back of the pouch, thread the buckle of the armband through the slots in the pouch as shown.
- 3 Thread the end of the armband through the buckle and secure it by folding it back onto the Velcro. Insert the SA28 player into the pouch as shown.



## 带夹

- 1 握住塑料方块和硅胶袋，使方块的凸出部分朝向机袋的前开口。  
如图所示，将方块的穿孔卡舌插入机袋的插槽。
- 2 如图所示，将 SA28 播放机装入机袋。
- 3 倒置带夹，将突出部分推入并穿过卡舌的穿孔。
- 4 旋转带夹使其竖立，确保机袋已捆绑牢固。



## 臂环

- 1 握住硅胶袋，使前开口朝向您。  
展开臂环，令维可牢绑带一面朝向其它方向。
- 2 如图所示，从机袋背面开始，将臂环的带扣穿过机袋中的穿孔。
- 3 将臂环的末端穿过带扣，并折回到维可牢绑带上将其固紧。  
如图所示，将 SA28 播放机装入机袋。

