

Register your product and get support at  
[www.philips.com/welcome](http://www.philips.com/welcome)

HTB3560



# Quick start guide

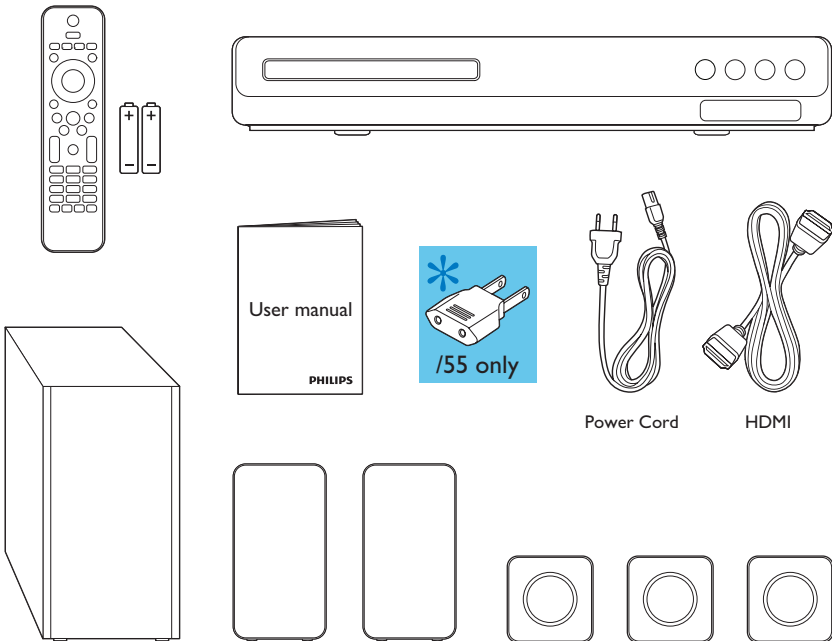
**PHILIPS**



**EN** Before using your product, read all accompanying safety information

**ES** Antes de usar el producto, consulte la información de seguridad que se encuentra adjunta.

**PT** Antes de usar o produto, leia todas as informações de segurança em anexo.

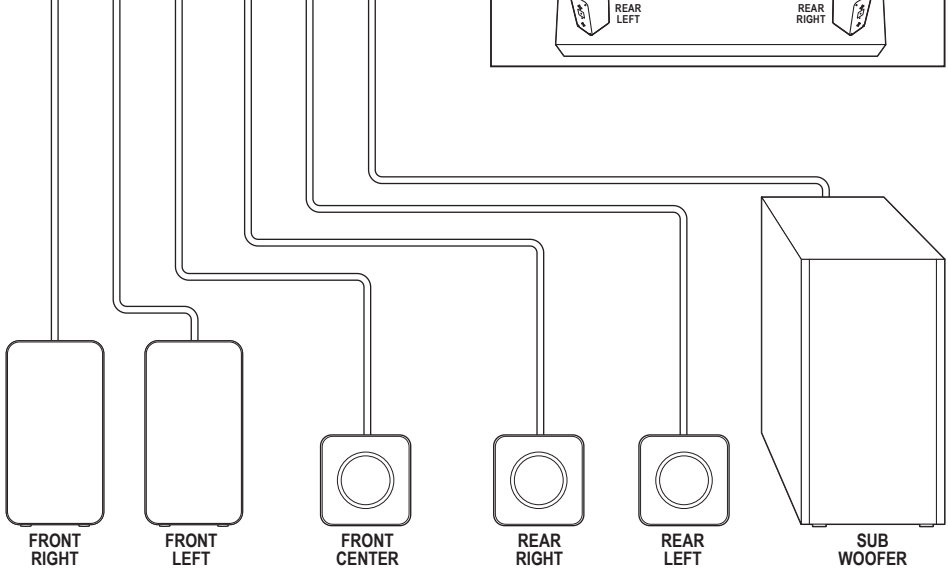
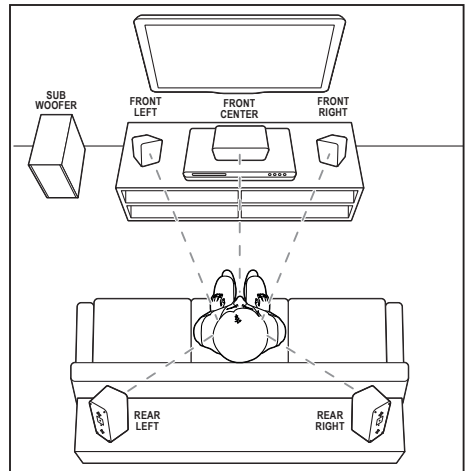
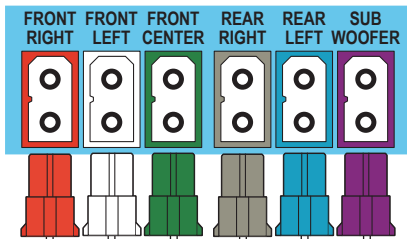
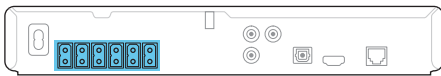


\* **ES** Adaptador suministrado como accesorio. No debe ser utilizado en las redes eléctricas en Argentina, su uso está destinado sólo para los demás países de América Latina.

**PT** Adaptador fornecido como acessório não deverá ser usado nas redes elétricas do Brasil, seu uso é destinado exclusivamente a outros países da América Latina.

# 1

- EN** Connect the home theater
- ES** Conexión del Home Theater
- PT** Conectar o Home Theater

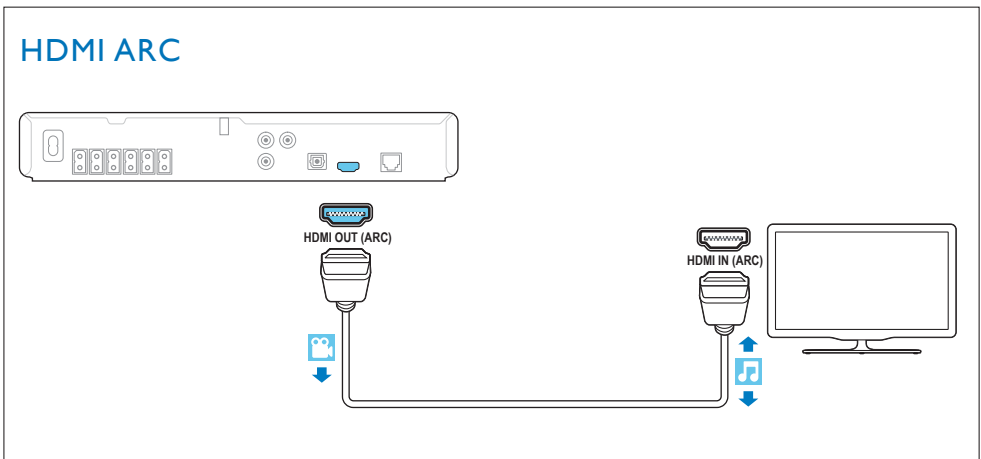


# 2

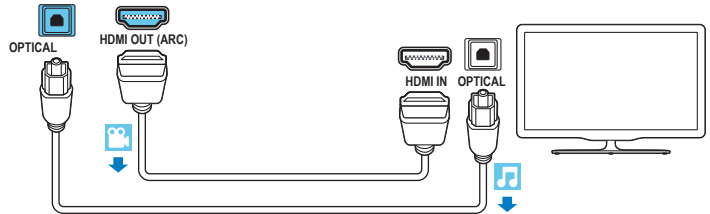
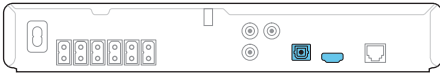
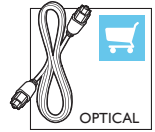
**EN** Connect to TV in one of these ways

**ES** Conecte al TV de alguna de las siguientes maneras

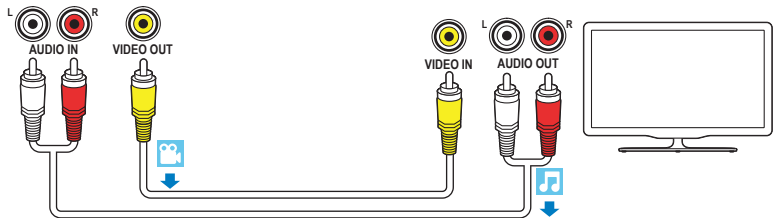
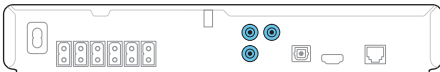
**PT** Conecte à TV de uma destas maneiras



## HDMI + OPTICAL



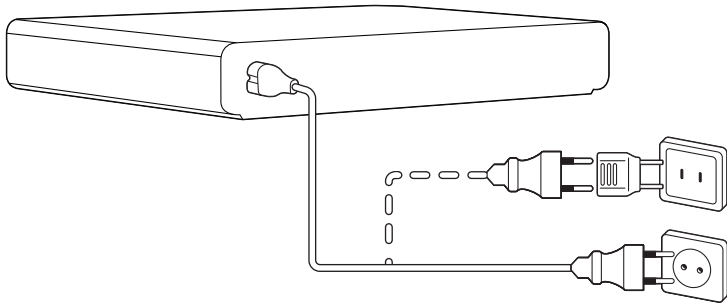
## VIDEO + AUDIO L/R



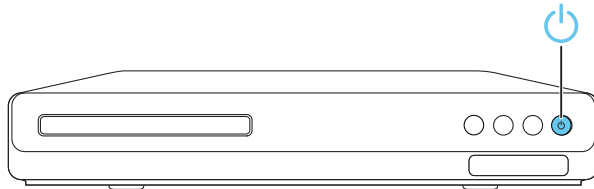
# 3

- EN** Switch on the home theater
- ES** Encendido del HomeTheater
- PT** Ligar o HomeTheater

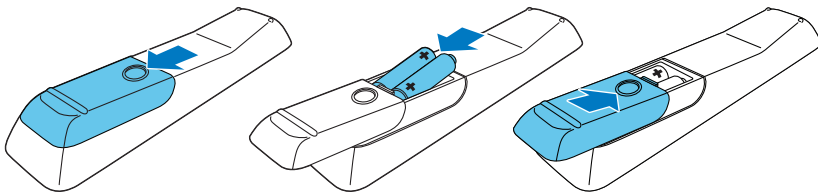
1



2

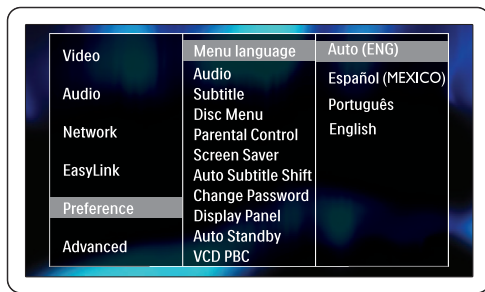
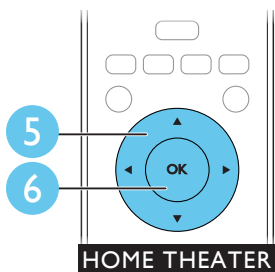
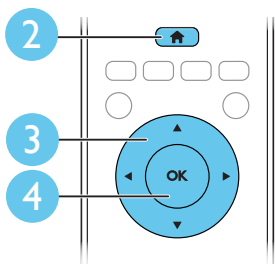
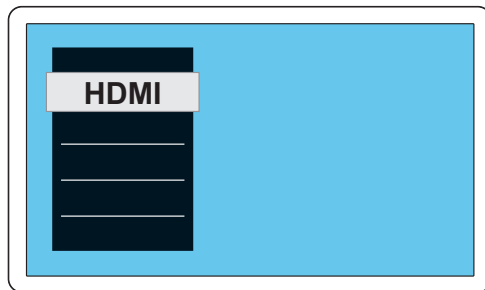
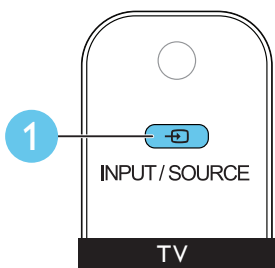


3



# 4

- EN** Complete the first time setup
- ES** Proceso de configuración inicial
- PT** Fazer a configuração inicial

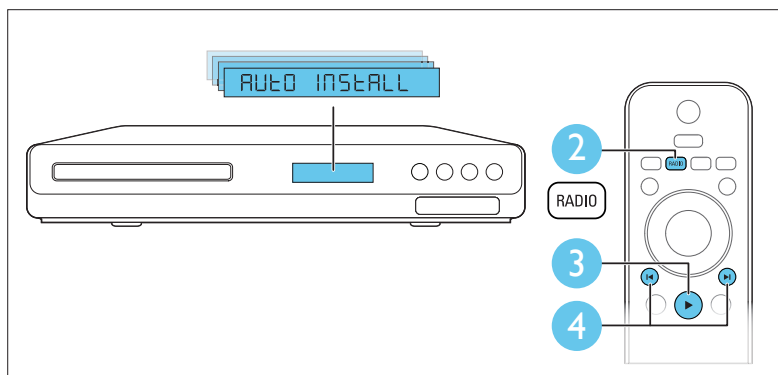
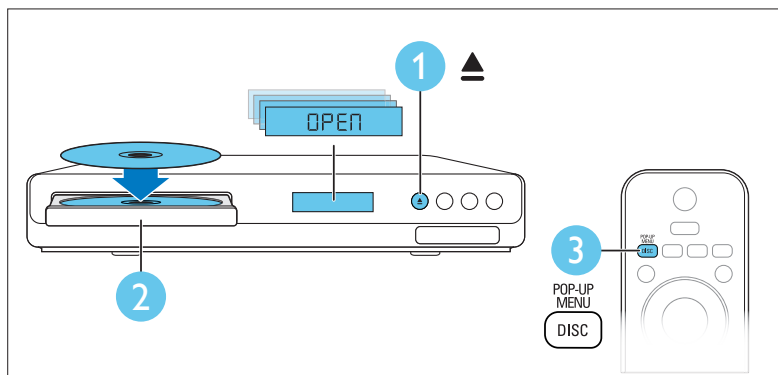


# 5

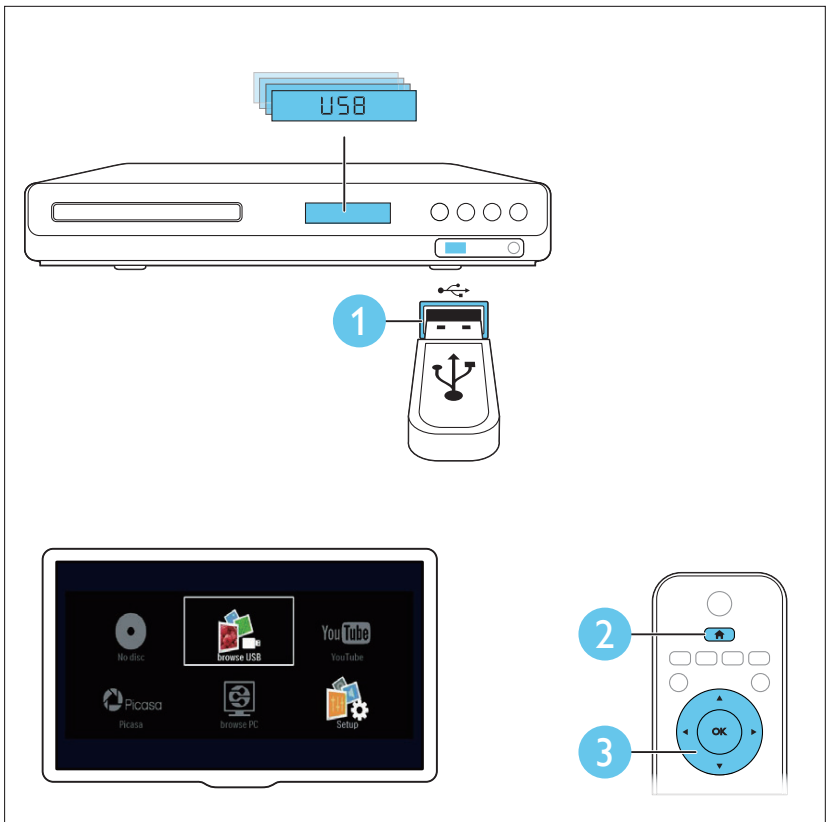
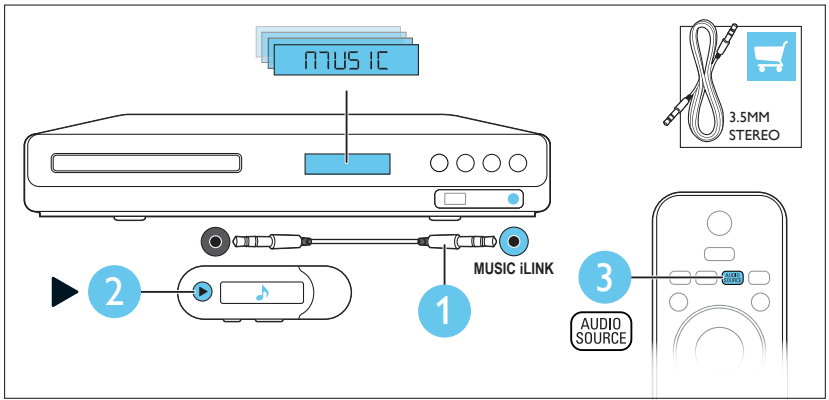
**EN** Use your home theater

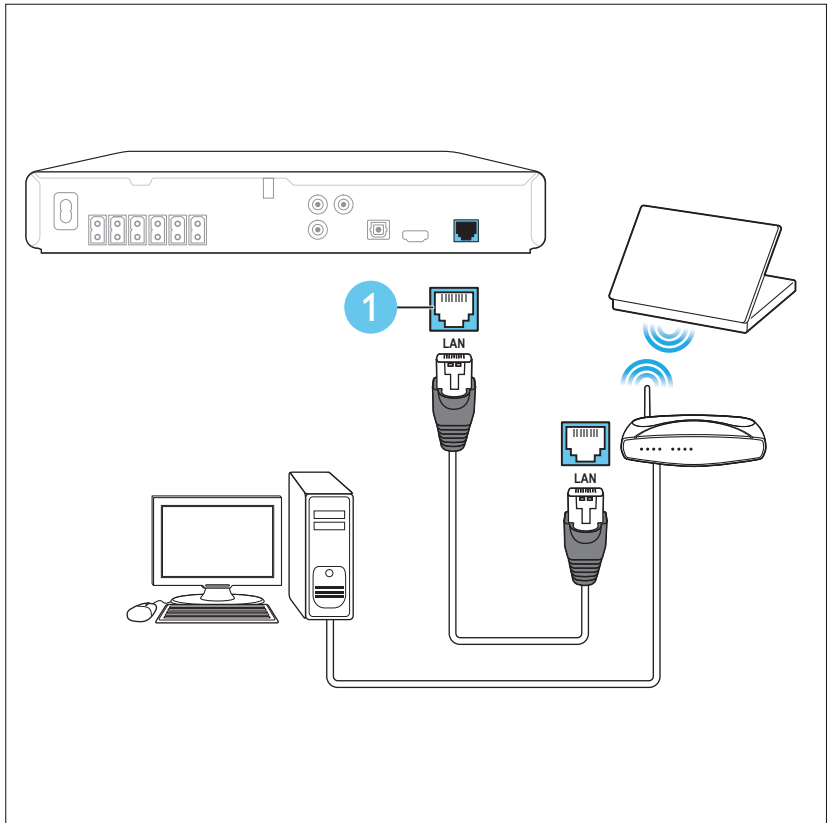
**ES** Uso del sistema de Home Theater

**PT** Usar o Home Theater









Specifications are subject to change without notice  
© 2012 Koninklijke Philips Electronics N.V.  
All rights reserved.

HTS3560\_55\_UM\_V2.0

