



Philips
Speaker System

1000 W
NX



NTX400

The ultimate sound tower

Party like at the club with up to 1000W power and thumping bass boosted by NX Bass technology. Start playing wirelessly from Bluetooth compatible devices, MP3 CD, USB and other devices through audio in.

Enjoy your music from multiple sources

- Enjoy MP3 music directly from your portable USB devices
- Rip music from CDs onto a USB device
- Stream music via Bluetooth®
- Pair with your NFC enabled device with one touch

Designed to party

- 260K LED lights for great party atmosphere

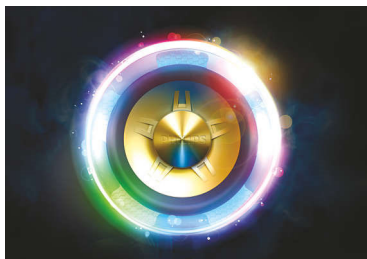
Engineered for powerful sound

- 1000W RMS total output power
- NX bass button for instant sound boost and light effects

PHILIPS

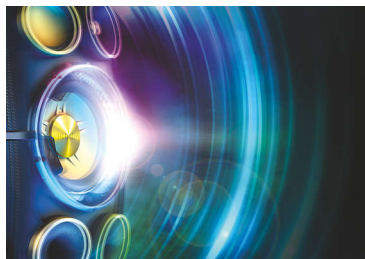
Highlights

260K LED lights



Add the ultimate atmosphere, ambience and passion to any party, with thousands of coloured lights that flicker, flash and flow in time with your music. Easily choose light colours to match your theme, or just pick one of the system's many presets. Flick the NX bass button to make the light show even more intense.

NX bass button



Available throughout the range, NX bass temporarily boosts bass and volume to the extreme. Hit the NX bass button to instantly juice up your sound, make lighting effects go wild and feel the immense bass of the subwoofers thundering through your bones.

Stream music via Bluetooth®



If you've got a big music collection stored away on a smartphone, tablet or computer, stream it to a NITRO system using digital Bluetooth® wireless music streaming and make it sound incredible. Powerful sound is rarely this easy or this convenient.

Easy NFC pairing

Pair with any NFC enabled device effortlessly. Gone is complicated wireless headphone pairing. Our new NFC technology is user friendly and easy to use, with one touch pairing for any NFC enabled smart device.

Specifications

Sound

- Output Power: 1000 W
- Total Sound Power (RMS): 1000 W
- Sound enhancement: NX Bass, Dynamic Bass Boost 3 steps, Digital sound control 5 modes

Loudspeakers

- Speaker drivers: 2 x 6.5" woofer, 50.8-mm (2") tweeter x 2
- Speaker types: bass reflex speaker system
- Number of speaker boxes: 1

Connectivity

- USB
- Aux in: 2 x RCA (Audio)
- Audio in: 3.5 mm stereo line in

Audio playback

- Disc playback modes: repeat/one/all/programme, repeat/shuffle/programme
- Playback media: CD, CD-R, CD-RW, MP3-CD
- USB Direct playback modes: fast reverse/fast forward, play/pause, previous/next, repeat, shuffle, stop

Tuner/Reception/Transmission

- Antenna: FM antenna, MW antenna
- Tuner bands: FM, MW
- Station presets: 20FM, 10AM
- Tuner enhancement: auto digital tuning, auto scan, Easy set (plug and play)

Convenience

- Loader type: tray
- Number of discs: 1
- Light Effect: Peace, Passion, Power, Samba, Fiesta, Cielo, Custom

Power

- Power supply: 100 - 240 V AC, 50/60 Hz

Accessories

- Remote control: 28-key with 2 x AAA batteries
- User Manual: multi-lingual
- Others: batteries for remote control, FM/MW antenna, Quick start guide
- Warranty: Worldwide Guarantee booklet

Dimensions

- Gross weight: 15.3 lb
- Main unit depth: 303 mm
- Main unit height: 818 mm
- Main unit width: 287 mm
- Packaging height: 390 mm
- Packaging width: 900 mm
- Packaging depth: 387 mm
- Net weight: 13 kg

Audio recording

- USB recording sources: CD, tuner, AUX, USB, Bluetooth
- Recording media: USB device
- USB recording modes: instant record, programmed tracks, schedule radio programme, single disc, single track



Issue date 2024-08-02

Version: 3.0.5

EAN: 48 95185 62043 5

© 2024 Koninklijke Philips N.V.
All Rights reserved.

Specifications are subject to change without notice.
Trademarks are the property of Koninklijke Philips N.V.
or their respective owners.

www.philips.com