

Always there to help you

Register your product and get support at
www.philips.com/support

BT3000



User manual

PHILIPS

Contents

1	Important	2
----------	------------------	----------

2	Your Bluetooth speaker	3
	Introduction	3
	What's in the box	3
	Overview of the speaker	4

3	Get started	6
	Power supply	6
	Turn on	6

4	Use Bluetooth devices	8
	Play from Bluetooth devices	8
	Control your phone call	8

5	Other features	9
	Listen to an external device	9
	Adjust volume	9

6	Product information	10
	Specifications	10

7	Troubleshooting	11
	General	11
	About Bluetooth device	11

8	Notice	12
	Care of the environment	12
	Trademark notice	12

1 Important



Warning

- Never remove the casing of this speaker.
 - Never lubricate any part of this speaker.
 - Never place this speaker on other electrical equipment.
 - Keep this speaker away from direct sunlight, naked flames or heat.
 - Make sure that you always have easy access to the power cord, plug, or adaptor to disconnect the speaker from the power.
-
- Make sure that there is enough free space around the speaker for ventilation.
 - Only use attachments/accessories specified by the manufacturer.
 - Battery usage CAUTION – To prevent battery leakage which may result in bodily injury, property damage, or damage to the speaker:
 - Install the batteries correctly, + and - as marked on the speaker.
 - Do not mix batteries (old and new or carbon and alkaline, etc.).
 - Remove the batteries when the speaker is not used for a long time.
 - The batteries shall not be exposed to excessive heat such as sunshine, fire or the like.
 - Use only power supplies listed in the user manual.
 - The speaker shall not be exposed to dripping or splashing.
 - Do not place any sources of danger on the speaker (e.g. liquid filled objects, lighted candles).
 - Where the plug of the Direct Plug-in Adapter is used as the disconnect device, the disconnect device shall remain readily operable..



Note

- The type plate is located on the bottom of the product.

2 Your Bluetooth speaker

Congratulations on your purchase, and supporte to Philips! To fully benefit from the support that Philips offers, register your product at www.philips.com/supporte.

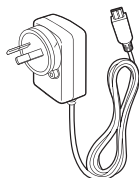
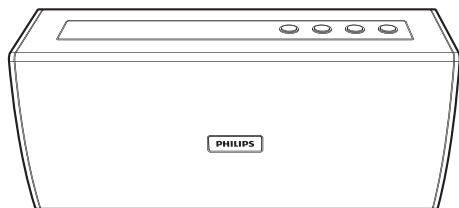
Introduction

With this speaker, you can enjoy audio from your Bluetooth-enabled devices, or other external audio devices.

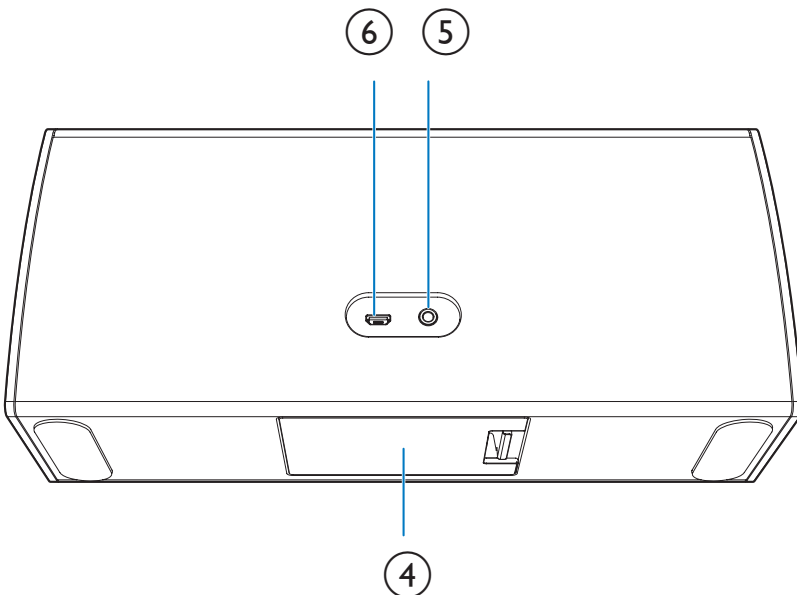
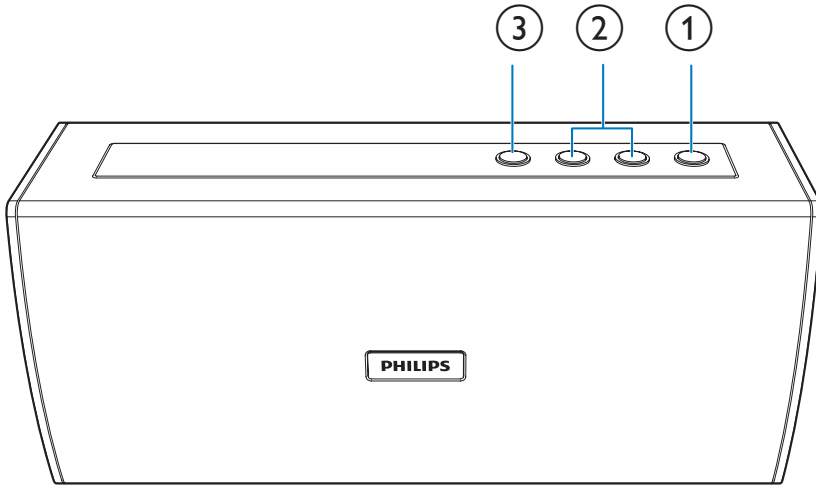
What's in the box

Check and identify the contents of your package:

- Speaker
- Power adapter
- Short user manual



Overview of the speaker



① 

- Turn the speaker on or off.

② +/-

- Adjust volume.

③  /PAIRING

- Enter Bluetooth pairing mode.
- Disconnect Bluetooth connection.
- Answer or reject an incoming call.
- End the current phone call.

④ **Battery compartment**

⑤ **AUDIO IN**

- Connect an external audio device.

⑥ **DC IN**

- Connect power:

3 Get started

Always follow the instructions in this chapter in sequence.

Power supply

The Bluetooth speaker can be powered by either AC mains or batteries.

Option 1: Battery power

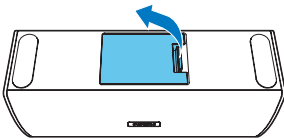
! Caution

- Risk of explosion! Keep batteries away from heat, sunshine, or fire. Never discard batteries in fire.
- Batteries contain chemical substances, so they should be disposed of properly.

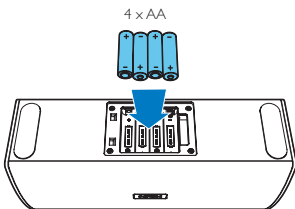
☰ Note

- Batteries are not supplied with the accessories.
- When LED indicator flashes red, replace the batteries.

1 Open the battery compartment.



2 Insert 4 AA batteries with correct polarity (+/-) as indicated.



3 Close the battery compartment.

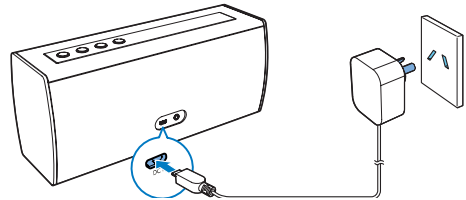
Option 2: AC power

! Caution

- Risk of product damage! Make sure that the power voltage corresponds to the voltage printed on the back or underside of the speaker.

Connect the power adaptor to:

- the **DC IN** socket on the speaker.
- the wall outlet.



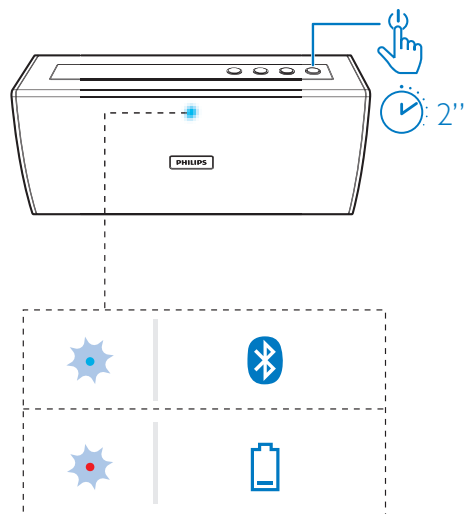
Turn on

Press and hold **⏻** for 2 seconds.

- ↳ The speaker switches to Bluetooth mode automatically.
- ↳ The LED indicator flashes blue.

☰ Note

- If battery is low, the LED indicator flashes red.



Turn off

The speaker is turned off in the following situations:

- Press and hold ϕ for 2 seconds again;
or
 - The Bluetooth connection is disconnected and there is no audio-in cable inserted for 15 minutes.
- ↳ The LED indicator is turned off.

4 Use Bluetooth devices

With this speaker, you can listen to audio from Bluetooth-enabled devices and control the incoming call through Bluetooth.

Play from Bluetooth devices

Note

- Make sure that your Bluetooth device is compatible with this speaker.
- Before pairing a device with this speaker, read its user manual for Bluetooth compatibility.
- The speaker can memorize a maximum of 4 paired devices.
- Make sure that Bluetooth function is enabled on your device, and your device is set as visible to all other Bluetooth devices.
- Any obstacle between this speaker and a Bluetooth device can reduce the operational range.
- Keep away from any other electronic device that may cause interference.
- The operational range between this speaker and a Bluetooth device is approximately 10 meters (30 feet).
- If there is an incoming call on the connected mobile phone, music playback pauses.

- 1 Press and hold **⏻** for 2 seconds.
↳ The LED indicator flashes blue.
- 2 On your Bluetooth device, enable Bluetooth and search for Bluetooth devices that can be paired (refer to the user manual of the device).
- 3 When **[PHILIPS BT3000]** is displayed on your device, select it to start pairing and connection. If necessary, input "0000" as the pairing password.
↳ After successful pairing and connection, the speaker beeps twice, and the LED indicator turns solid blue.
 - If you fail to find **[Philips BT3000]** on your device for pairing, press and hold **PAIRING** until you hear beep sound, and then try again.

- 4 Play audio on the Bluetooth device.
↳ Audio streams from your Bluetooth device to the speaker.

To disconnect the Bluetooth-enabled device:

- Press and hold **PAIRING** for two seconds;
- Disable Bluetooth on your device; or
- Move the device beyond the communication range.

To reconnect the Bluetooth device:

- Next time you turn on the speaker, the speaker will reconnect the last connected device automatically; or
- On your Bluetooth device, select "**PHILIPS BT3000**" on your Bluetooth menu.

To connect another Bluetooth-enabled device:

- Disable Bluetooth on the current device, and then connect another device.

LED indicator	Description
Flashing blue	Connecting; Waiting for pairing
Solid blue	Connected

Control your phone call

After Bluetooth connection, you can control an incoming call with this speaker:

Button	Function
⏻	Press to answer an incoming call.
⏻	Press and hold for 2 seconds to reject an incoming call.
⏻	During a call, press to end the current call.

5 Other features

Adjust volume

During play, press + or - repeatedly to increase or decrease the volume level.

Listen to an external device

With this speaker, you can also listen to an external audio device such as an MP3 player.

Note

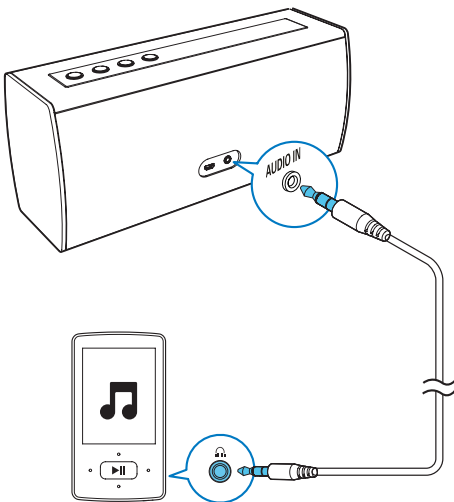
- Make sure that there is no Bluetooth connection, or music playback through Bluetooth is paused.

Tip

- To increase or decrease volume continuously, press and hold + or - for 2 seconds.

- 1 Connect an audio input cable (not supplied) with a 3.5 mm connector on both ends to
 - the **AUDIO IN** socket on this speaker;
 - and
 - the headphone socket on the external device.

↳ The speaker switches to audio-in mode automatically.
- 2 Play audio on the external device (refer to its user manual).



6 Product information

Note

- Product information is subject to change without prior notice.

Specifications

Amplifier

Total Output Power	5 W
Signal to Noise Ratio	>67 dB
Audio-in Input	600 mV RMS 20 kohm

Bluetooth

Bluetooth Version	V3.0
Supported Profiles	HFP, A2DP, AVRCP
Range	10 m (Free space)

General information

Power Supply	
- AC Power (power adapter)	Brand name: PHILIPS; Model: ICP12-050- 1500D; Input: 100-240 V~, 50/60 Hz, 0.3 A; Output: 5 V --- 1500 mA;
- Battery	4 x 1.5V LR6 AA
Operation Power Consumption	1.95 W
Dimensions - Main Unit (W x H x D)	280 x 121 x 93 mm
Weight - Main Unit	1.3 kg

7 Troubleshooting



Warning

- Never remove the casing of this device.

To keep the warranty valid, never try to repair the system yourself.

If you encounter problems when using this device, check the following points before requesting service. If the problem remains unsolved, go to the Philips Web page (www.philips.com/support). When you contact Philips, make sure that the device is nearby and the model number and serial number are available.

General

No power

- Make sure that the AC power plug of the speaker is connected properly.
- Make sure that there is power at the AC outlet.
- Make sure that the batteries are inserted correctly.

No sound or poor sound

- Adjust volume on the product.
- Adjust volume on the connected device.

No response from the speaker

- Restart the speaker.

The LED indicator flashes blue for 5 times, and the speaker has no response when pressing any key.

- The speaker is in DEMO mode. Press and hold  for 15 seconds to exit this mode.

About Bluetooth device

The audio quality is poor after connection with a Bluetooth-enabled device.

- The Bluetooth reception is poor: Move the device closer to this product or remove any obstacle between them.
- The batteries are low. Replace the batteries.

Cannot connect with the device.

- The Bluetooth function of the device is not enabled. Refer to the user manual of the device for how to enable the function.
- This product is already connected with another Bluetooth-enabled device. Disconnect that device and then try again.

The paired device connects and disconnects constantly.

- The Bluetooth reception is poor: Move the device closer to this product or remove any obstacle between them.
- For some devices, Bluetooth connection may be deactivated automatically as a power-saving feature. This does not indicate any malfunction of this product.

8 Notice

Any changes or modifications made to this device that are not expressly approved by Gibson Innovations may void the user's authority to operate the equipment.

Care of the environment

Disposal of your old product



Your product is designed and manufactured with high quality materials and components, which can be recycled and reused. Do not throw away the product with the normal household waste at the end of its life, but hand it in at an official collection point or recycling. By doing this, you help to preserve the environment.

Environmental information

All unnecessary packaging has been omitted. We have tried to make the packaging easy to separate into three materials: cardboard (box), polystyrene foam (buffer) and polyethylene (bags, protective foam sheet.) Your system consists of materials which can be recycled and reused if disassembled by a specialized company. Please observe the local regulations regarding the disposal of packaging materials, exhausted batteries and old equipment.

Trademark notice

Bluetooth

The Bluetooth ® word mark and logos are registered trademarks owned by Bluetooth SIG, Inc. and any use of such marks by Gibson Innovations Limited is under license. Other trademarks and trade names are those of their respective owners.



This is CLASS II apparatus with double insulation, and no protective earth provided.



Specifications are subject to change without notice.

2015 © Gibson Innovations Limited. All rights reserved.

This product has been manufactured by, and is sold under the responsibility of Gibson Innovations Ltd., and Gibson Innovations Ltd. is the warrantor in relation to this product. Philips and the Philips Shield Emblem are registered trademarks of Koninklijke Philips N.V. and are used under license from Koninklijke Philips N.V.

BT3000_98_UM_V1.0

