

**PHILIPS**

**Faro**

Design cordless  
phone (M770)

Design cordless  
phone with  
answering machine  
(M775)

# Short user manual



Register your product and get support at

[www.philips.com/support](http://www.philips.com/support)

# Important safety instructions

## Warning

- The Electrical network is classified as hazardous. The only way to power down the charger is to unplug the power supply from the electrical outlet. Ensure that the electrical outlet is always easily accessible.
- Refer to safety information before using the product.
- Hereby, Gibson Innovations declares that this product is in compliance with the essential requirements and other relevant provisions of Directive 2014/53/EU.
- Use only the power supply listed in the user instructions.
- Use only the batteries listed in the user instructions.
- Do not allow the product to come into contact with liquids.
- Risk of explosion if battery is replaced by an incorrect type.
- Dispose of used batteries according to the instructions.
- When the handset rings or when the handsfree is activated, keep the handset away from your ear to avoid hearing damage.

# 1 Overview

## In call

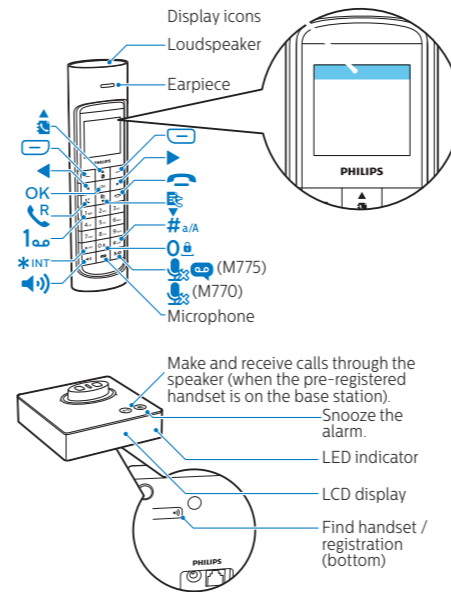
- Enter the option menu.
- Change the sound profile.
- Adjust the volume.
- Recall (network dependent).
- End calls.
- Enter a pause (press and hold).
- Turn the speaker on/off.
- Mute/unmute the microphone.

## Standby

- Access the main menu (press and hold when there is a new event).
- Access the redial list.
- Phonebook
- Call log
- Make and receive calls.
- Access the network voice mail (network and country dependent) (press and hold).
- Switch the handset on or off (press and hold).
- Make intercom call (press and hold).
- Lock/unlock the keypad (press and hold).
- Make and receive calls through the speaker.
- M775 only: Press to play new message from the answer menu. / Access to the answer machine menu.

## In menu

- Confirm / Select / Enter the option menu.
  - Cancel / back
  - Up / down
  - Exit menu.
- ## In text input
- Delete text.
  - Enter a space.
  - Left / Right
  - Switch upper/lower case (press and hold).

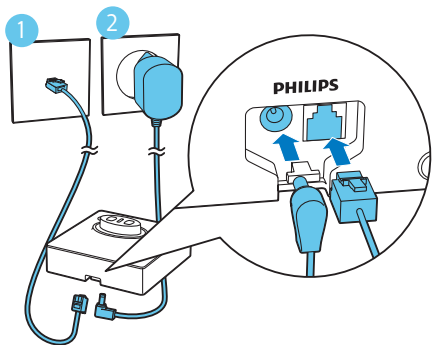


## Display icons

- It shows the connection status between the handset and base station. The more bars are shown, the better the signal strength is.
- It remains steadily on when browsing incoming calls in the call log.
- It remains steadily on when browsing outgoing call in the redial list.
- It flashes when there is a new missed call or when browsing unread missed calls in call log. It remains steadily on when browsing the read missed calls in call log.
- It remains steadily on when browsing blocked calls in call log.
- It flashes when receiving incoming call. It remains steadily on when you are in a call.
- The speaker is on.
- The ringer is off. The silent mode is set and within active period (the phone does not ring).

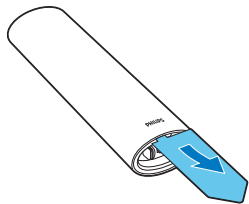
- M775 only: Answering machine: it flashes when there is a new message or when the memory is full. It is displayed when the telephone answering machine is turned on.
- Voice messages indicator: flashes for new messages, is steady for reviewed messages. \* This is network dependent.
- The silent mode is set, but is outside of active period.
- The alarm is activated. The icon is displayed on / the screen of the pre-registered handset and base station.
- It is displayed when you adjust the volume.
- The Eco mode is activated.
- The ECO+ mode is activated.
- It enables the phone to couple with the hearing aid device to amplify the sound and reduce noise interference.


## 2 Connect



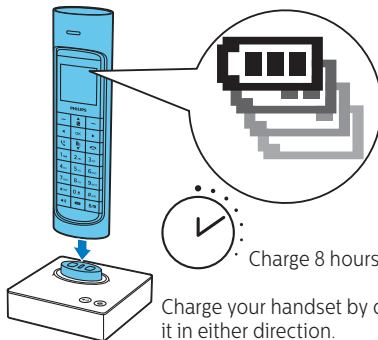
# 3 Get started

## Configure your phone



- 1 The batteries are pre-installed in the handset. Pull the battery tape off from the battery door before charging.
- 2 When using your phone for the first time, you see a welcome message (country dependent).
- 3 Set the country and language if prompted.
- 4 Set the date and time.
  - If the time is in 12-hour format, press  to select **[am]** or **[pm]** (country dependent).

## Charge your phone



Charge your handset by docking it in either direction.

 > 70%

 40% - 70%

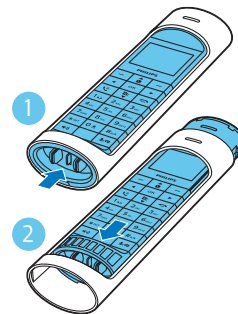
 10% - 40%

 Flashing: low battery

 Scrolling: charging in progress

## Remove and install the battery sleeve

(when necessary)





# 4 Enjoy

## Phonebook

### Add record

- 1 Press **[Menu]** > **[Phonebook]** > **[Add new]**.
- 2 Follow on-screen instructions.

### Call from the phonebook


- 1 Press .
- 2 Select a record and press .

### Call from the direct access memory

Press and hold on the keys in standby mode. The availability of direct access memory is country dependent.

## Call log

### Call from the call log

- 1 Press .
- 2 Select a record and press .

### Save record

- 1 Press  > **[Option]** > **[Save number]**.
- 2 Follow on-screen instructions.

## Redial list

### Call from the redial list

- 1 Press **[Redial]**.
- 2 Select a record and press .

### Save record

- 1 Press **[Redial]**.
- 2 Select a record and select **[OK]** > **[Option]** > **[Save number]**.
- 3 Follow on-screen instructions.

## Telephone answering machine (for M775 only)

### Turn the answering machine on or off


- 1 Press **[Menu]** > **[Answer machine]** > **[On/off]**.
- 2 Follow on-screen instructions.
  - **[On]** > **[Answer only]** means the answering machine is on. Calls are only answered, messages are not recorded.
  - **[On]** > **[Answer & rec.]** means the answering machine is on. Calls are answered and messages are recorded.

### Listen to the incoming messages

Press **[Menu]** > **[Answer machine]** > **[Play]**.

## Register the handset or additional handsets

You can register additional handsets to the base station.

- 1 Press **[Menu]** on the handset.
- 2 Select **[Services]** > **[Register]**, then press **[OK]** to confirm.
- 3 Press and hold  on the base station for 10 seconds.
- 4 Enter the system PIN/passcode (0000).

- 5 Press **[OK]** to confirm the PIN/passcode.
  - ↳ Registration is complete in less than 2 minutes.

### Note

The handset and the base station are GAP compliant, which means they guarantee the minimum functions: register a handset, take the line, make a call and receive a call. The advanced features may not be available if you use them with other makes. To register the handset to another GAP-compliant base station, follow the registration procedure of that base station.

## Restore default settings

You can reset your phone settings to the original factory settings, and recall the original PIN/passcode.

- 1 Press **[Menu]**.
- 2 Select **[Services]** > **[Reset]**, then press **[OK]** to confirm.
- 3 Follow on-screen instructions.

# 5

## Learn more

### Silent mode

Sets time during which the phone will not ring.

**[Privacy mode] > [Silent mode]**

### MySound

Customizes the sound of voices to your liking.

**[Sounds] > [MySound]**

### Eco/ECO+ mode

Reduces transmission power and radiation (causes 2 seconds ring delay, 50% shorter standby time).

**[Phone setup] > [Eco mode]/[ECO+ mode]**

### Call barring

Prevents unwanted outgoing calls to selected numbers.

**[Privacy mode] > [Call barring]**

### Block incoming calls

Blocks incoming calls to certain undesirable numbers.

**[Privacy mode] > [Call block]**

# Technical data



## Battery

- Philips: 2 x AAA NiMH 1.2 V Rechargeable 550 mAh batteries

Use only the supplied batteries.

## Adapter (base and charger)

Tenpao: S003GB0600050

Input: 100-240 V~ 50/60 Hz 150 mA

Output: 6 Vdc 500 mA

Phonebook with 100 entries

Call log with 50 entries

Talk time: 16 hours

Standby time: 250 hours

RF output power: < 24 dBm

Frequency band: 1880 MHz ~ 1900 MHz



## Note

You can find the Declaration of Conformity on [www.p4c.philips.com](http://www.p4c.philips.com).



# ? Frequently asked questions

My handset displays **[Searching]** or **[Unavailable]**, or **[Register your Handset]**, what do I do?

- Make sure that the base station has power supply.
- The handset is out of range. Move it closer to the base station.
- The handset is not paired with the base. Register the handset to the base station.



If I fail to pair (register) the additional handsets to the base station, what do I do?

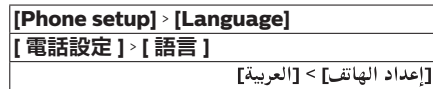
- Your base memory is full. Access **[Services]** > **[Unregister]** to unregister the unused handsets and try again.
- If registration fails, unplug the power adapter from the base station and plug it back. Wait for 15 seconds, and then repeat the registration procedure.

I have chosen a wrong country in Welcome screen, what do I do?

Reset your phone settings to the original factory settings (see the section on “Restore default settings”).

I have chosen a wrong language which I cannot read, what do I do?

- 1 Press  to go back to the standby screen.
- 2 Press  to access the main menu screen.
- 3 The following options will appear on the screen:



- 4 Select them to access the language options.
- 5 Select your own language.

The handset loses connection with the base or the sound interrupts during a call.

- The handset is nearly out of range. Move it closer to the base station.
- Check if the ECO mode is activated. Turn it off to increase the handset range and enjoy the optimal call conditions.
- Re-register the handset to the base station.

The handset on the charger does not charge or the battery discharges too fast.

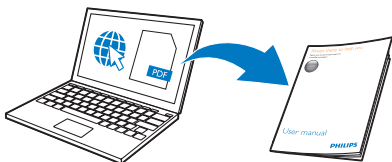
- Make sure the batteries are inserted correctly.
- Make sure the handset is placed properly on the charger. If the docking tone is turned on, you can hear the docking tone when you place the handset on the charging cradle. The battery icon animates when charging.
- The charging contacts are dirty. Disconnect the power supply first and clean the contacts with a damp cloth.
- The battery is not fully recharged. Leave the handset on the charging cradle for at least 8 hours or until the battery icon on the handset stops scrolling and indicates full bar.
- The batteries are old or defective. Purchase and replace with new rechargeable batteries with the same specifications.

Bad audio (crackles, echo, etc.)

- The handset is nearly out of range. Move it closer to the base station.
- The phone receives interference from the nearby electrical appliances. Move the base station away from them.
- The phone is at a location with thick walls. Move the base away from them.
- The phone receives interference from the DSL (digital subscriber line) connection. Install a DSL filter to prevent the noise. Contact your service provider for the DSL filter.

The caller ID does not display.

- The service is not activated. Check with your service provider.
- The caller's information is withheld or unavailable.



[www.philips.com/support](http://www.philips.com/support)

To access the user instructions online, use the reference model number written on the product label at the bottom of the base station.



This symbol on a product means that the product is covered by European Directive 2012/19/EU.

This product has been manufactured by, and is sold under the responsibility of Gibson Innovations Ltd., and Gibson Innovations Ltd. is the warrantor in relation to this product. Philips and the Philips Shield Emblem are registered trademarks of Koninklijke Philips N.V. and are used under license from Koninklijke Philips N.V.



UMS\_M770/775  
90\_EN\_V1.0  
WK16334