

Always there to help you

Register your product and get support at
www.philips.com/welcome

PD7022

Question?
Contact
Philips



User manual 3

Benutzerhandbuch 47

Mode d'emploi 91

Manual del usuario 135

Brugervejledning 25

Gebruiksaanwijzing 69

Manuale utente 113

Användarhandbok 157

PHILIPS

Contents

1 Important	5
Safety and notice	5
Safety	5
Compliance	6
Care of the environment	7
Copyright	8
Warranty	9
2 Your portable DVD player	10
Introduction	10
What's in the box	10
Overview of the main unit	11
Overview of the second screen	13
3 Get started	14
Preparation	14
Connect the second screen	15
Connect power	15
4 Use your player	17
Switch on/off	17
Select OSD language	17
Play discs	17
Play options	18

5	Adjust settings	19
	Set the main unit	19
	Set the second screen	20

6	Use more of your player	21
	Connect additional equipment	21

7	Product information	22
----------	----------------------------	----

8	Troubleshooting	23
----------	------------------------	----

1 Important

Safety and notice

Read and understand all instructions before you use this product. If damage is caused by failure to follow the instructions, the warranty does not apply.

Safety

Only use attachments/accessories specified by the manufacturer.

The product shall not be exposed to dripping or splashing.

Do not place any sources of danger on the product (e.g. liquid filled objects, lighted candles).

Batteries (battery pack or batteries installed) shall not be exposed to excessive heat such as sunshine, fire or the like.

Danger of explosion if battery is incorrectly replaced. Replace only with the same or equivalent type.

Modification of the product could result in hazardous radiation of EMC or other unsafe operation.



Warning

- Where the MAINS plug or an appliance coupler is used as the disconnect device, the disconnect device shall remain readily operable.



Warning

- Never remove the casing of this product.
- Never lubricate any part of this product.
- Never place this product on other electrical equipment.
- Keep this product away from direct sunlight, naked flames or heat.
- Never look into the laser beam inside this product.
- Ensure that you always have easy access to the power cord, plug or adaptor to disconnect the product from the power.

Hearing safety



A pleine puissance, l'écoute prolongée du baladeur peut endommager l'oreille de l'utilisateur.



Warning

- To prevent possible hearing damage, do not listen at high volume levels for long periods.

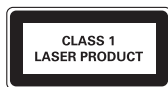
The maximum output voltage of the player is not greater than 150 mV.

Compliance



This product complies with the radio interference requirements of the European Community.

This apparatus includes this label:



Note

- The type plate is located on the bottom of the product.

Care of the environment

Environmental information

All unnecessary packaging has been omitted. We have tried to make the packaging easy to separate into three materials: cardboard (box), polystyrene foam (buffer) and polyethylene (bags, protective foam sheet.)

Your system consists of materials which can be recycled and reused if disassembled by a specialized company. Please observe the local regulations regarding the disposal of packaging materials, and old equipment.



Your product is designed and manufactured with high quality materials and components, which can be recycled and reused.



When this crossed-out wheeled bin symbol is attached to a product it means that the product is covered by the European Directive 2002/96/EC.

Please inform yourself about the local separate collection system for electrical and electronic products.

Please act according to your local rules and do not dispose of your old products with your normal household waste. Correct disposal of your old product helps to prevent potential negative consequences for the environment and human health.



Your product contains batteries covered by the European Directive 2006/66/EC, which cannot be disposed with normal household waste. Please inform yourself about the local rules on separate collection of batteries because correct disposal helps to prevent negative consequences for the environmental and human health.

Copyright



This item incorporates copy protection technology that is protected by U.S. patents and other intellectual property rights of Rovi Corporation. Reverse engineering and disassembly are prohibited.

Specifications are subject to change without notice. Trademarks are the property of Koninklijke Philips Electronics N.V or their respective owners. Philips reserves the right to change products at any time without being obliged to adjust earlier supplies accordingly.



Manufactured under license from Dolby Laboratories.

Dolby and the double-D symbol are trademarks of Dolby Laboratories.



ABOUT DIVX VIDEO: DivX® is a digital video format created by DivX, LLC, a subsidiary of Rovi Corporation. This is an official DivX Certified® device that plays DivX video. Visit divx.com for more information and software tools to convert your files into DivX videos.

ABOUT DIVX VIDEO-ON-DEMAND: This DivX Certified® device must be registered in order to play purchased DivX Video-on-Demand (VOD) movies. To obtain your registration code, locate the DivX VOD section in your device setup menu. Go to vod.divx.com for more information on how to complete your registration.

Warranty

- Never attempt to repair the product, this could lead to the risk of injury, damage to the product and will void your warranty.
- Use the product and accessories only as intended by the manufacturer. The caution sign printed on the back of the product indicates risk of electric shock.
- Never remove the cover of the product. Always contact Philips Customer Support for service or repairs.
- Any operation expressly prohibited in this manual, or any adjustments and assembly procedures not recommended or authorized in this manual shall void the warranty.

2 Your portable DVD player

Congratulations on your purchase, and welcome to Philips! To fully benefit from the support that Philips offers, register your product at www.philips.com/welcome.

Introduction

Your portable DVD player plays digital video discs that conform to the universal DVD Video standard. With it, you can play movies with true cinema picture quality and stereo or multi-channel sound (depending on disc and playback set-up). You can also select sound track, subtitle languages, and different angle of view (again depending on DVD disc). Besides, you can restrict the play of discs that are not suitable for children.

You can play the following discs on the DVD player (including CD-R, CD-RW, DVD±R and DVD±RW):

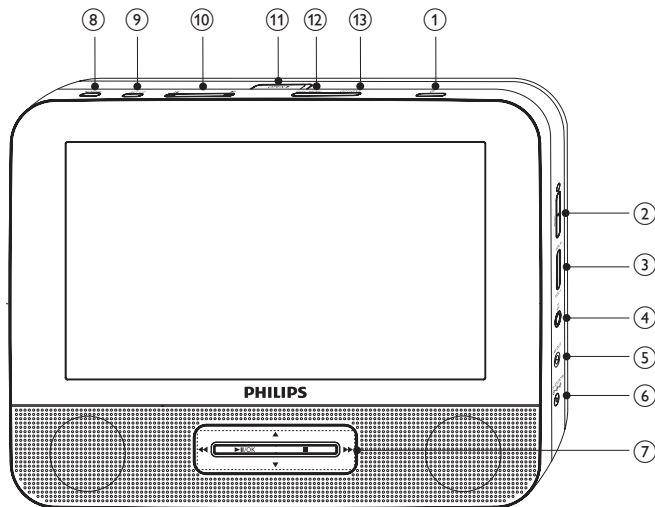
- DVD-Video
- Video CD
- Audio CD
- MP3 CD
- DivX
- Discs with JPEG files


What's in the box

Check and identify the contents of your package:

- Main unit × 1
- Second screen × 1
- AC power adaptor × 1, ASUC12E-090080 (Philips)
- Car adaptor × 1
- AV cable × 2
- Fastening strap × 2
- User Manual × 1

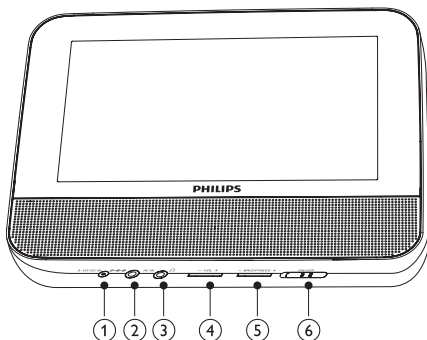
Overview of the main unit




- ① ①
 - Turns on/off DVD player.
- ② **RESET**
 - When the player hangs up, press it with a ball-point pen or similar tool to reset the player.
- ③ **VOL +/-**
 - Increases or decreases volume.
- ④ 
 - Headphone jack.
- ⑤ **AV OUT**
 - Audio/video output jack.

- ⑥ **DC IN**
- Power supply socket.
- ⑦ **▲, ▼, ◀, ▶**
- Navigates menus.
- ◀◀, ▶▶**
- Searches backward/forward at different speeds.
- ▶||/OK**
- Confirms an entry or selection.
 - Starts, pauses or resumes disc play.
-
- Stops disc play.
- ⑧ **AV MODE**
- Switches between PAL and NTSC mode.
- ⑨ **SETUP**
- Accesses or exits the setup menu.
- ⑩ **◀, ▶**
- Skips to the previous or next title, chapter; or track.
- ⑪ **OPEN ▶**
- Opens the disc compartment.
- ⑫ **DISC MENU**
- For DVD, accesses or exits disc menu.
 - For VCD, turns on or off PBC (Playback Control) mode.
 - For VCD version 2.0 or SVCD with PBC turned on, returns to the menu.
- ⑬ **OPTIONS**
- Accesses options relating to the current activity or selection.

Overview of the second screen



- ① **DC IN**
 - Power supply socket.
- ② **AV IN**
 - Audio/video input jack.
- ③  **Headphone jack.**
- ④ **VOL -/+**
 - Decreases or increases volume.
- ⑤ **BRIGHTNESS -/+**
 - Adjusts screen brightness.
- ⑥ **OFF/ON**
 - Turns off/on the second screen.

3 Get started



Caution

- Use the controls only as stated in this user manual.
- Always follow the instructions in this chapter in sequence.

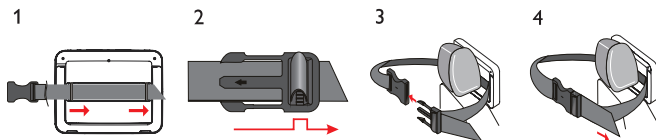
If you contact Philips, you will be asked for the model and serial number of your player. The model number and serial number are on the bottom of your player. Write the numbers here:

Model No. _____

Serial No. _____

Preparation

To use the player in a car, attach the main unit and the second screen to the back of the front seat headrests.



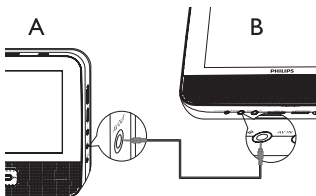
- 1 Pull the strap through the loops on the back of the main unit.
- 2 Hold the buckle with the marked arrow facing you, then attach the buckle to the strap.
- 3 Position the main unit at the back of the headrest, then fasten the buckle.
- 4 Pull the strap to secure the main unit to the headrest.
 - To attach the second screen, repeat the above steps.

Connect the second screen



Caution

- Turn off your player before you connect the second screen.



A: main unit; B: second screen

1 Connect the supplied AV cable to:

- the **AV OUT** jack on the main unit.
- the **AV IN** jack on the second screen.

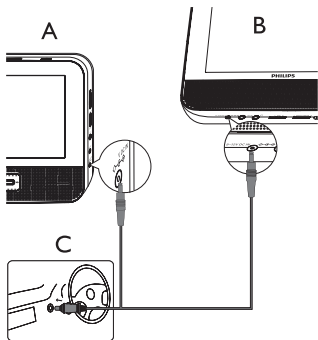
Connect power

Connect power through car adaptor



Caution

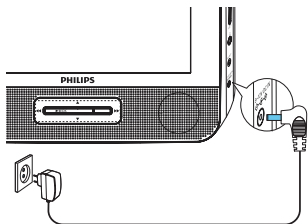
- Risk of product damage! Ensure that the power supply voltage corresponds to the voltage pointed on the back or the underside of the player.
- Risk of electric shock! When you unplug the AC adaptor, always pull the plug from the socket. Never pull the cable.



A: main unit; B: second screen; C: car cigarette lighter

- 1 Connect one end of the double-connector end of the AC cable to the **DC IN** jack on the main unit.
- 2 Connect the other end of the double-connector end of the AC cable to the **DC IN** jack on the second screen.
- 3 Connect the one-connector end to the car cigarette lighter socket.

Connect power through the AC adaptor



- 1 Connect the AC adaptor cable to:
 - the **DC IN** jack on the main unit.
 - the power outlet.

4 Use your player

Switch on/off

- 1 Press **ⓘ** to switch on the player.
 - To switch on the second screen, slide the **OFF/ON** switch on the second screen to the **ON** position. To switch off, slide the **OFF/ON** switch to the **OFF** position.
 - 2 To switch off the player, press **ⓘ**.
-

Select OSD language

You can select a different language for the onscreen display text.

- 1 Press **SETUP**.
 - ↳ The setup menu is displayed.
 - 2 Select **[General] > [Language]**.
 - 3 Press **▲ / ▼** to select a language.
 - 4 Press **▶||/OK** to confirm.
 - 5 Press **SETUP** to exit.
-

Play discs

- 1 Slide **OPEN ▶** on the main unit.
- 2 Insert the disc with label side facing up.
- 3 Push down to close the disc compartment.
 - ↳ Play starts automatically. If not, press **▶||/OK**.
 - If a menu appears, select an item, then press **▶||/OK** to start play.

- To pause, press ►||/OK. Press again to resume play.
- To stop, press ■ twice.
- To select the previous/next item, press ◀ or ▶.
- To start search within video/audio, press ◀◀ or ▶▶ once or more.

Play options

- 1 During play, press **OPTIONS** to select some play options.
- 2 Follow the on-screen instructions.

5 Adjust settings

Set the main unit

To maximize your play experience, use **SETUP** to fine tune your settings.

- 1 Press **SETUP**.
↳ The setup menu is displayed.
- 2 Use navigation keys to select an option and press **▶II/OK** to confirm.

[General]	
[Language]	Select on-screen display language
[PBC settings]	Set playback control function on/off.
[Power save]	Set power saving mode.
[DivX (VOD)]	Get DivX registration code.
[DivX subtitles]	Select DivX subtitle language.
[Parental(DVD)]	Select parental options.
[Set password]	Change existing password (3308 by default).
[Factory settings]	Restore factory settings.
[Video]	
[LCD Display]	Set screen display aspect ratio.
[TV standard]	Set video output format to TV system.
[Brightness]	Adjust screen brightness.
[Contrast]	Adjust screen contrast.
[Audio]	
[Dolby]	Set Dolby output.
[Version]	Check the version information.

- 3 Press **◀◀** to go back to the previous menu.
- 4 Press **SETUP** to exit.

Set the second screen

You can also set the second screen.

- To adjust volume level for the second screen, press **VOL -/+** on the second screen.
- To adjust the brightness of the second screen, press **BRIGHTNESS -/+** on the second screen.

6 Use more of your player

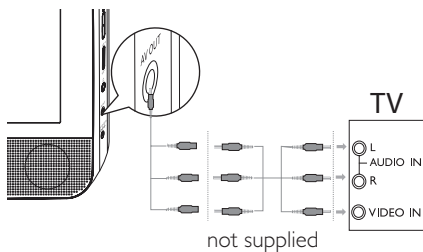
Connect additional equipment



Caution

- Turn off your player before connecting to any additional equipment.

You can connect the player to a TV or an amplifier to enjoy DVDs or Karaoke. Match the color of the AV cables (the AV cable connected to TV is not supplied) with the jacks: the yellow cable is for the yellow video jack, the red/white cable is for the red/white audio jacks.



7 Product information



Note

- Product information is subject to change without prior notice.

Dimensions

- Main unit	200 × 155 × 39 mm
- Second screen	200 × 155 × 21 mm

Weight

- Main unit	0.7 kg
- Second screen	0.4 kg

AC Power adaptor	ASUC12E-090080 (Philips)
------------------	--------------------------

Power supply	Input: 100-240V 50/60Hz 0.3A Output: DC 9V 0.8A
--------------	--

Power consumption	9 W
-------------------	-----

Operating temperature range	0-45°C
-----------------------------	--------

Laser wavelength	650 nm
------------------	--------

Video system	NTSC & PAL
--------------	------------

Frequency response	20Hz-20KHz ± 1dB
--------------------	------------------

Signal/noise ratio	≥ 80 dB
--------------------	---------

Audio distortion + noise	≤ -80 (1KHz)
--------------------------	--------------

Channel separation	≥ 80 dB
--------------------	---------

Dynamic range	≥ 80 dB
---------------	---------

Audio out (analog audio)	Output level: 2V ± 10%
--------------------------	------------------------

Load impedance	10 K Ω
----------------	--------

Video out	Output level: 1V _p - p ± 20%
-----------	---

Load impedance	75 Ω
----------------	------

8 Troubleshooting



Warning

- Risk of electric shock. Never remove the casing of the player.

To keep the warranty valid, never try to repair the system yourself.

If you encounter problems when using the player, check the following points before requesting service. If the problem remains unsolved, register your player and get support at www.philips.com/support. When you contact Philips, ensure that your apparatus is nearby and the model number and serial number are available.

No power

- Ensure that both plugs of the mains cord are properly connected.
- Ensure that there is power at the car cigarette lighter or AC outlet.

No sound

- Ensure that the AV cable is connected correctly.

Distorted picture

- Clean the disc. With a clean, soft, lint-free cloth, wipe the disc outwards from the center.
- Make sure that the video output format of the disc is compatible with the TV.
- Change the video output format to match your TV or program.
- The LCD is manufactured using high precision technology. You may, however, see tiny black points and/or bright points (red, blue, green) that continuously appear on the LCD. This is a normal result of the manufacturing process and does not indicate a malfunction.

Cannot play disc

- Ensure the disc label is upwards.
- Clean the disc. With a clean, soft, lint-free cloth, wipe the disc outwards from the center.
- Check if the disc is defective by trying another disc.

Not work properly or freeze up

- Press **RESET** with a ball-point pen or similar tool to switch off the player, and press **⏻** to restart.

The player feels warm

- When the player is in use for a long period of time, its surface will be heated. This is normal.



Specifications are subject to change without notice
© 2014 Koninklijke Philips Electronics N.V.
All rights reserved.

PD7022_12_UM_ERP_V4.0_wk1552.2

