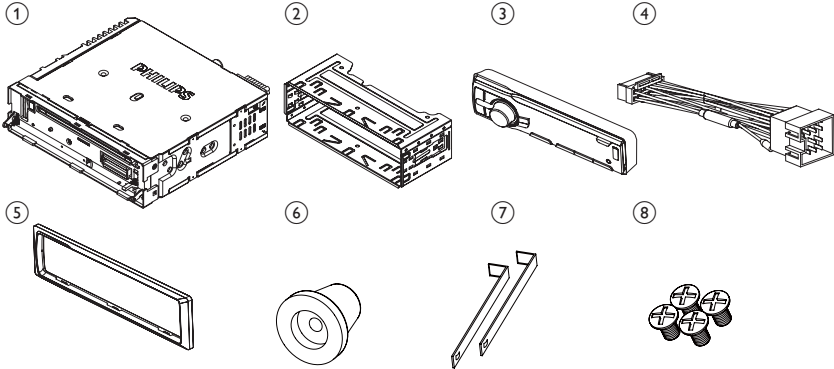




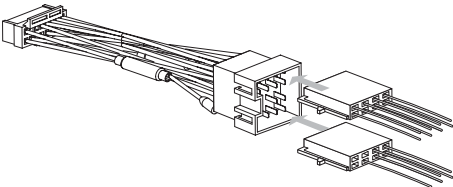
EN Quick Start Guide



1



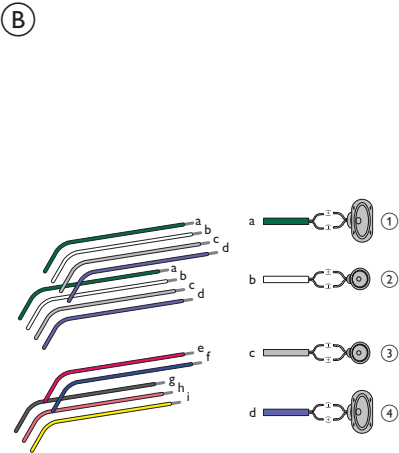
2



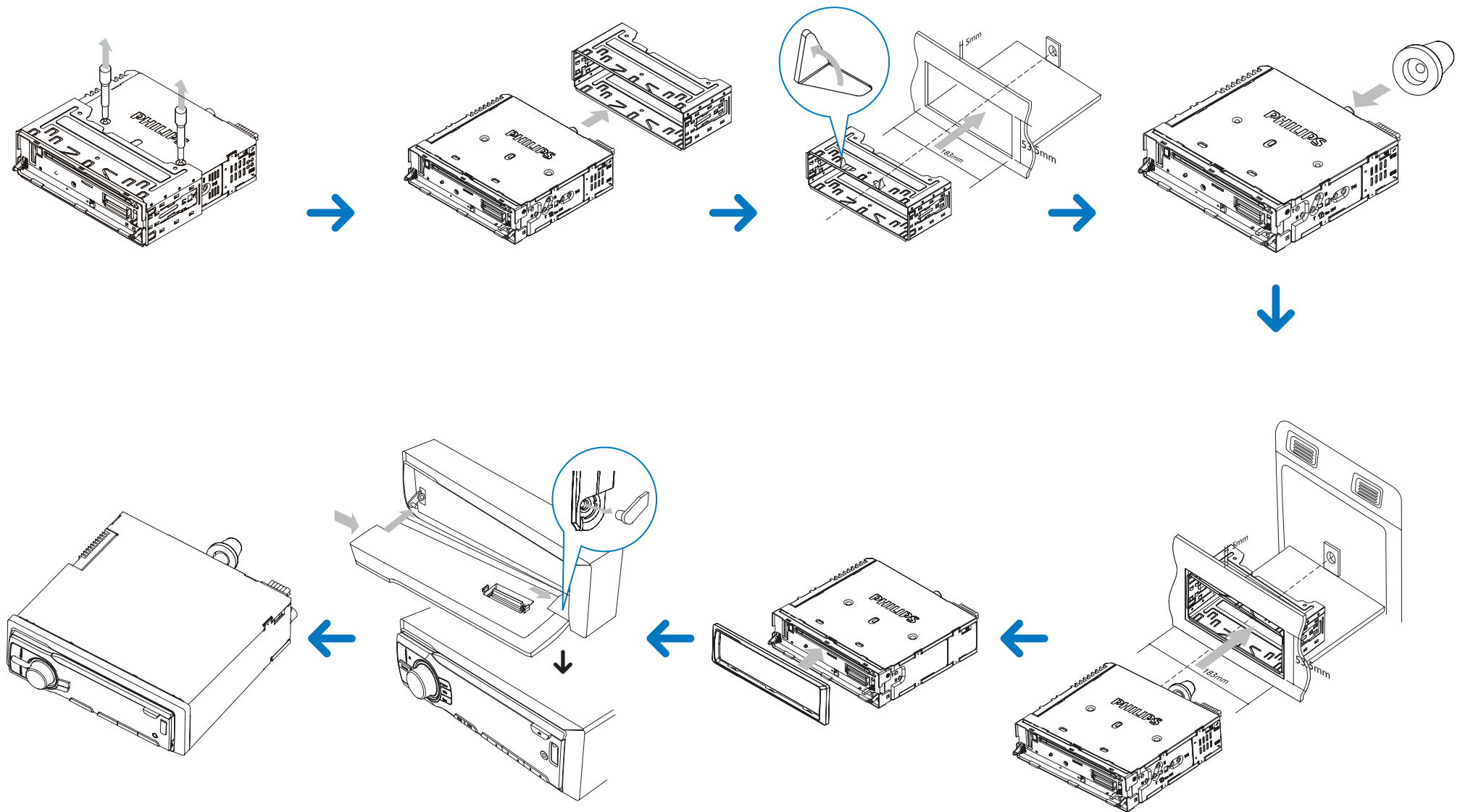
3



4



5



Overview of parts 1

These are the supplied parts needed to connect and install this unit.

- 1 In-car audio system
- 2 Sleeve
- 3 Front panel
- 4 Standard connector
- 5 Trim plate (2 pieces)
- 6 Rubber cushion
- 7 Disassembly tools
- 8 Screws 4 pieces

Connect wires

! Caution

- Ensure that all loose leads are insulated with electrical tape.

For cars with ISO connectors 2 3

- 1 Pull out the ISO connectors from car dashboard and connect them to the bigger end of the supplied standard connector.
- 2 Connect the other end of the supplied standard connector to the unit.
- 3 Connect the antenna and amplifier as illustrated, if applicable.

| Connector | Connect to |
|-------------------|--------------------|
| 1 REAR LINE OUT R | Rear right speaker |
| 2 REAR LINE OUT L | Rear left speaker |
| 3 SUB OUT | Subwoofer |
| 4 ANTENNA | Antenna |

For cars with ISO connectors 3 4

! Caution

- Be sure to connect the black ground (earth) lead first.

- 1 Connect the antenna and amplifier as illustrated, if applicable.
- 2 Cut off the bigger end of the supplied standard connector.
- 3 Check the car's wiring carefully and connect them to the supplied standard connector.
- 4 Connect the supplied standard connector to the unit.

| | | |
|---|--------------------|-----------------------|
| 1 | Green/black strip | Left speaker (Rear) |
| 2 | White/black strip | Left speaker (Front) |
| 3 | Gray/black strip | Right speaker (Front) |
| 4 | Purple/black strip | Right speaker (Rear) |

| | |
|----------------|--|
| e RED | Ignition key +12V DC when ON/ACC |
| f BLUE | Motor/electric antenna relay control lead/ Amplifier relay control lead |
| g BLACK | Ground |
| h Orange/white | Illumination switch |
| i YELLOW | To the +12V car battery which is energized at all times |

≡ Note

- Check wire connection before you mount the unit into a car.
- If preset radio stations are lost when the ignition key is turned **OFF** and then back **ON**, reconnect the red leads crosswise to the yellow ones.

Attach the front panel 5

- 1 Insert the right side of the panel in the chassis until it is correctly engaged.
- 2 Press the left side of the panel and point the left hole at the left pillar.
- 3 Release the panel to engage the left side.
- 4 Attach the trim plate.

Mount in the dashboard 5

- 1 If the car does not have an on-board drive or navigation computer, disconnect the negative terminal of the car battery.
 - If you disconnect the car battery in a car that has an on-board drive or navigation computer, the computer may lose its memory.
 - If the car battery is not disconnected, to avoid short-circuit, ensure that bare

wires do not touch each other.

- 2 Remove the two screws on the top of the unit.
- 3 Remove the mounting sleeve with the supplied disassembly tools.
- 4 Ensure that car dashboard opening is within these measurements:
- 5 Install the sleeve into the dashboard and bend the tabs outward to fix the sleeve.
- 6 Place the rubber cushion over the end of the bolt.
- 7 Slide the unit into the dashboard until you hear a click sound.
- 8 Reconnect the negative terminal of the car battery.

Turn on

- 1 Press ① to turn on the unit.
 - To turn off the unit, press ① for 3 seconds.

Set clock

- 1 Press **MENU/DISP** for 3 seconds.
- 2 Press ▲ or ▼ repeatedly to until the currently time is displayed.
- 3 Turn ① clockwise to set hour.
- 4 Press ① to confirm.
- 5 Turn ① anti-clockwise to set minute.
- 6 Press ① to confirm.

View clock

- 1 Press **MENU/DISP** repeatedly until the clock is displayed.

Listen to radio

- 1 Press **SOURCE** repeatedly to select Radio.
- 2 Press or to select band: **[FM1]**, **[FM2]**, **[FM3]**, **[AM1]**, or **[AM2]** .
- 3 Press **◀** or **▶** to tune to a radio station manually.
 - To search for a radio station automatically, press **SEARCH**.

Play audio files

- 1 Press **▲** on the front panel to release the panel.
- 2 Insert a CD with the printed side facing up.
- 3 Close the panel.
- 4 Press **▶||** , to start play.
 - To pause CD play, press **▶||** .
 - To resume CD play, press **▶||** again.

Insert the USB device

- 1 Open the cover marked **⚡** on the front panel.
- 2 Insert the USB device into the USB socket.
 - ↳ The unit starts playing from the USB device automatically.

Insert SD/MMC card

- 1 Press **▲** to release the panel.
- 2 Insert the SD or MMC card into the card slot.
 - ↳ The unit starts playing from the SD/MMC card automatically.



CLASS 1
LASER PRODUCT