

Mini HiFi System

FWC5

User manual

Manuel d'utilisation

Manual del usuario



PHILIPS

México



Es necesario que lea cuidadosamente su instructivo de manejo.

	PRECAUCIÓN - ADVERTENCIA No abrir, riesgo de choque eléctrico	
	ATENCIÓN Verifique que el voltaje de alimentación sea el requerido para su aparato	
Para evitar el riesgo de choque eléctrico, no quite la tapa. En caso de requerir servicio, dirijase al personal calificado.		

Descripción: **Minisistema de Audio**
Modelo : **FWC5/21**
Alimentación: **110-127 V/ 220-240V; ~50-60 Hz**
Consumo: **40 W**
Importador: **Philips Mexicana, S.A. de C.V.**
Domicilio: **Av. La Palma No.6**
Col. San Fernando La Herradura
Huixquilucan
Localidad y Tel: **Edo. de México C.P. 52784**
Tel.52 69 90 00
Exportador: **Philips Electronics HK, Ltd.**
País de Origen: **China**
N° de Serie: _____

LEA CUIDADOSAMENTE ESTE INSTRUCTIVO

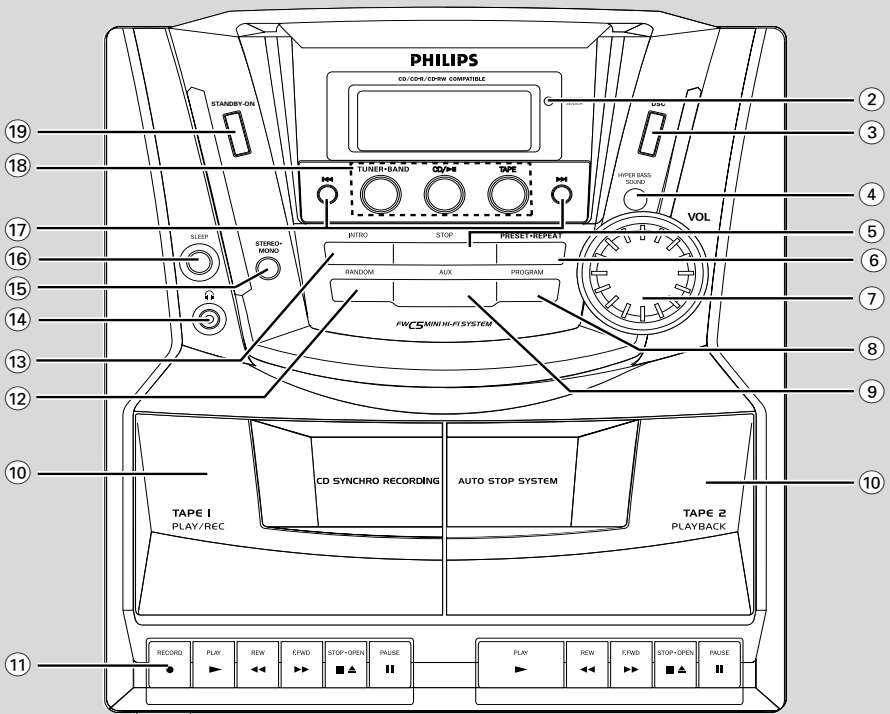
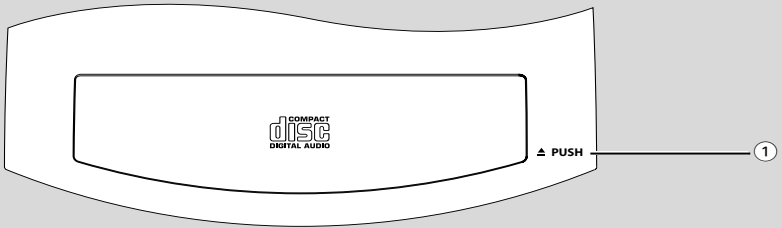
AVISO IMPORTANTE

Philips Mexicana, S.A. de C.V. no se hace responsable por daños o desperfectos causados por:

- *Maltrato, descuido o mal uso, presencia de insectos o roedores (cucarachas, ratones etc.).*
- *Cuando el aparato no haya sido operado de acuerdo con el instructivo del uso, fuera de los valores nominales y tolerancias de las tensiones (voltaje), frecuencia (ciclaje) de alimentación eléctrica y las características que deben reunir las instalaciones auxiliares.*
- *Por fenómenos naturales tales como: temblores, inundaciones, incendios, descargas eléctricas, rayos etc. o delitos causados por terceros (choques asaltos, riñas, etc.).*

CAUTION

Use of controls or adjustments or performance of procedures other than herein may result in hazardous radiation exposure or other unsafe operation.



ATTENTION

L'utilisation des commandes ou réglages ou le non respect des procédures ci-incluses peuvent se traduire par une exposition dangereuse à l'irradiation.

ATENCIÓN

El uso de mando o ajustes o la ejecución de métodos que no sean los aquí descritos puede ocasionar peligro de exposición a radiación.

English 6

Français 22

Español 38

English

Español

Português

Contents

General Information

Supplied accessories	7
Environmental information	7
Maintenance	7
Safety information	7

Controls

Controls on the system	8
Remote control	9

Installation

Rear connections	10-11
Speakers connection	
Antennas connection	
Connecting the power cord	11
Inserting batteries into the remote control.	12
Setting the clock	12

Basic Functions

Switching on/to standby and and selecting functions	13
Volume control	13
Mute	13
Sound control	13
DSC (Digital Sound Control)	
HYPER BASS SOUND (HBS)	

CD Operation

Discs for playback	14
Playing discs	14
Selecting and searching	14
Selecting a different track	
Finding a passage within a track	
Programming tracks	15
To review the program	
Erasing the program	
Different play modes:	
Repeat, Random and Intro	15

Radio Reception

Tuning to radio stations	16
Storing preset radio stations	16
To listen to a preset station	

Tape Operation/Recording

Loading tapes	17
Playing tapes	17
To playback a selected tape	
Continuous playback of two tapes	
General information on recording	17
Preparation for recording	18
One touch recording	18
Sychro start CD recording	18
Dubbing tapes	18

AUX/SLEEP/RESET

AUX	19
SLEEP	19
RESET	19

Specifications

.....	20
-------	----

Troubleshooting

.....	21
-------	----

Supplied accessories

- 2 speaker boxes
- remote control
- AM loop antenna

Environmental information

All unnecessary packaging has been omitted. We have tried to make the packaging easy to separate into three materials: cardboard (box), polystyrene foam (buffer) and polyethylene (bags, protective foam sheet).

Your system consists of materials which can be recycled and reused if disassembled by a specialized company. Please observe the local regulations regarding the disposal of packaging materials, exhausted batteries and old equipment.

Maintenance

Cleaning the Cabinet

- Use a soft cloth slightly moistened with a mild detergent solution. Do not use a solution containing alcohol, spirits, ammonia or abrasives.

Cleaning Discs

- When a disc becomes dirty, clean it with a cleaning cloth. Wipe the disc from the center out.
- Do not use solvents such as benzene, thinner, commercially available cleaners, or antistatic spray intended for analog records.

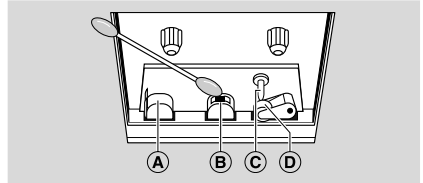


Cleaning the disc lens

- After prolonged use, dirt or dust may accumulate at the disc lens. To ensure good playback quality, clean the disc lens with Philips CD Lens Cleaner or any commercially available cleaner. Follow the instructions supplied with cleaner.

Cleaning the Heads and the Tape Paths

- To ensure good recording and playback quality, clean the heads (A) and (B), the capstan(s) (C), and pressure roller(s) (D) after every 50 hours of tape operation.
- Use a cotton swab slightly moistened with cleaning fluid or alcohol.
- You can also clean the heads by playing a cleaning tape once.



Demagnetizing the heads

- Use a demagnetizing tape available at your dealer.

Safety information

- Place the system on a flat, hard and stable surface.
- Do not expose the system, batteries or discs to excessive moisture, rain, sand or heat sources caused by heating equipment or direct sunlight.
- Place the system in a location with adequate ventilation to prevent internal heat build-up in your system. Allow at least 10 cm (4 inches) clearance from the rear and the top of the unit and 5 cm (2 inches) from each side.
- The ventilation should not be impeded by covering the ventilation openings with items, such as newspapers, table-cloths, curtains, etc.
- The apparatus shall not be exposed to dripping or splashing.
- No objects filled with liquids, such as vases, shall be placed on the apparatus.
- No naked flame sources, such as lighted candles, should be placed on the apparatus.
- The mechanical parts of the set contain self-lubricating bearings and must not be oiled or lubricated.

Controls (illustrations on page 3)

Controls on the system (Top and front panels)

① ▲PUSH

- push to open the disc door

② REMOTE SENSOR

- sensor for the infrared remote control

Helpful hints: Always point the remote control towards this sensor.

③ DSC (DIGITAL SOUND CONTROL)

- selects predefined sound settings: **FLAT, ROCK, JAZZ, POP, CLASSIC.**

④ HYPER BASS SOUND

- switches the bass enhancement on/off

⑤ STOP

- stops CD playback; erase a CD program

⑥ PRESET-REPEAT

- **CD:** repeats a track, a disc or programmed track(s)
- **TUNER:** selects a preset radio station

⑦ VOL rotary

- adjusts the volume

⑧ PROGRAM

- **CD:** programs tracks and reviews the program
- **TUNER:** programs preset radio stations
- **CLOCK:** sets the clock time

⑨ AUX

- selects the input from an additional connected appliance

⑩ Tape deck 1/2

⑪ Tape deck keys

RECORD ● starts recording (for TAPE 1 only)

PLAY ► starts playback

REW◀◀ / F. FWD ▶▶ fast rewinds/
winds a tape

STOP•OPEN ■▲ stops playback; opens
the tape holder

PAUSE II

TAPE 1: interrupts playback or recording

TAPE 2: interrupts playback

⑫ RANDOM

- plays a disc in random order

⑬ INTRO

- plays each track 10 seconds

⑭

- 3.5 mm headphone socket

Helpful hints:

– Adjust the volume to a moderate level before you plug in the headphones.

- Connecting headphones will switch off the speakers.

⑮ STEREO•MONO

- selects mono or stereo FM reception

⑯ SLEEP

- displays/adjusts/switches off the sleep timer

⑰ ◀◀ / ▶▶

- **CD:** skips or searches CD tracks backwards/
forwards

- **TUNER:** tunes to radio stations

- **CLOCK:** sets the hour/minute

⑱ Source buttons

TUNER•BAND

- select tuner source and toggles between the wavebands : FM or AM(MW).

CD•▶ II

- select CD source; starts or pauses CD playback

TAPE

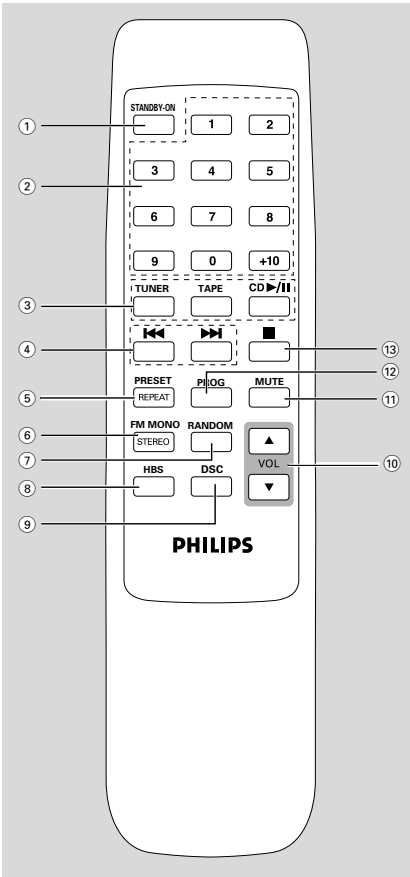
- selects tape source.

⑲ STANDBY-ON

- switches the system on or to standby mode.

- switches off the sleep timer.

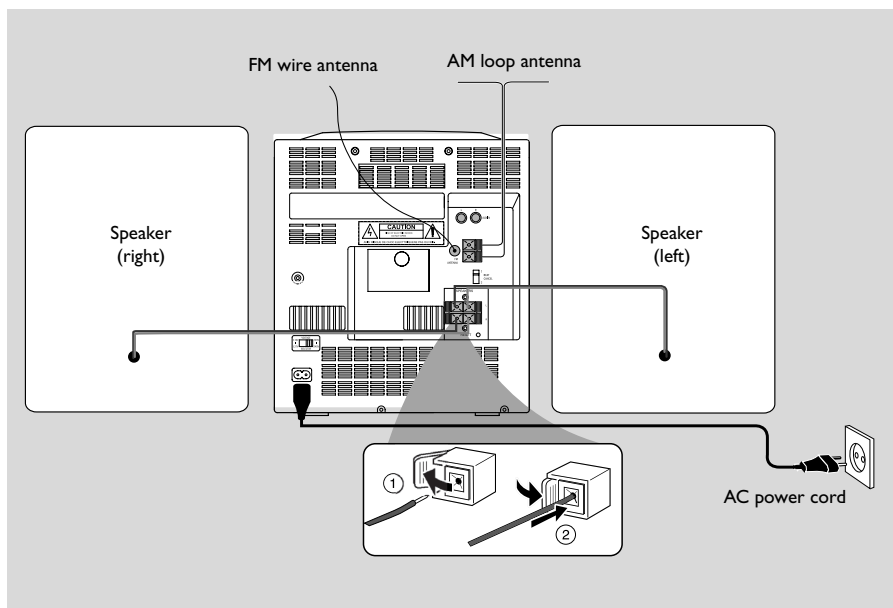
Remote control



- ④ **◀▶ / ▶▶**
 - **CD:** skips or searches CD tracks backwards/ forwards
 - **TUNER:** tunes to radio stations
- ⑤ **PRESET/REPEAT**
 - **CD:** repeats a track, a disc or programmed track(s)
 - **TUNER:** selects a preset radio station
- ⑥ **FM MONO / STEREO**
 - selects mono or stereo FM reception
- ⑦ **RANDOM**
 - plays a disc in random order
- ⑧ **HBS (HYPER BASS SOUND)**
 - switches the bass enhancement on/off
- ⑨ **DSC (DIGITAL SOUND CONTROL)**
 - selects predefined sound settings: **FLAT, ROCK, JAZZ, POP, CLASSIC**
- ⑩ **VOL ▲ / ▼**
 - adjusts the volume
- ⑪ **MUTE**
 - switches the sound off temporarily
- ⑫ **PROG**
 - **CD:** programs tracks and reviews the program
 - **TUNER:** programs preset radio stations
- ⑬ **■**
 - stops CD playback; erase a CD program

- ① **STANDBY-ON**
 - switches the system on or to standby mode.
- ② **DIGITS 0 - +10**
 - **CD:** selects a track number.
 - **TUNER:** selects a preset station.
- ③ **Source buttons**
 - TUNER (FM•AM/MW)**
 - selects tuner source and toggles between the wavebands : FM or AM(MW).
 - TAPE**
 - selects tape source.
 - CD / ▶ II**
 - select CD source; starts or pauses CD playback

Installation



Rear connections

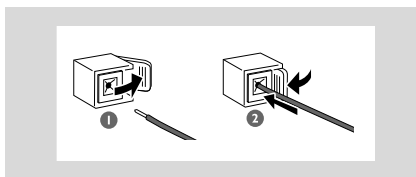
Warning:

Never make or change connections with the mains supply switched on.

A Speakers connection

Use the supplied speakers only. Using other speakers can damage the set or the sound quality will be negatively affected.

- Connect the cables of the left speaker to L (red and black) and the cables of the right speaker to R (red and black) as follows:

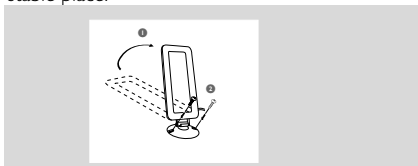


Open the clip of the red terminal and fully insert the stripped portion of the coloured (or marked) speaker cable into the socket, then close the clip.

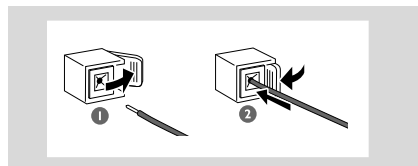
Open the clip of the black terminal and fully insert the stripped portion of the black (or unmarked) speaker cable into the socket, then close the clip.

B Antennas Connection AM (MW) antenna

- 1 Unfold the loop antenna and if necessary, use screws (not supplied) to fix it to a flat, hard and stable place:



- 2 Fit the plug of the loop antenna to AM ANTENNA as shown below.



- 3 Adjust the antenna for optimal reception (as far as possible from a TV, VCR or radiation sources)

FM antenna

- 1 Extend the wire antenna and move the antenna in different positions for optimal reception (as far away as possible from the TV, VCR or other radiation sources).
- 2 Fix the antenna's end to the wall.

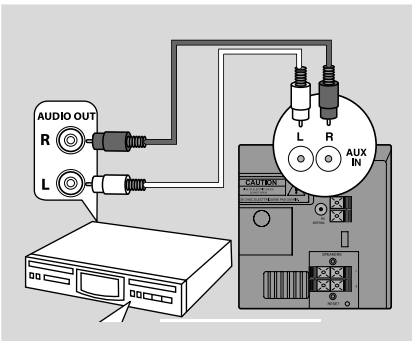
C Connecting an additional appliance

It is possible to use an additional appliance, e.g. TV, VCR, Laser Disc player, DVD player or CD recorder, with the system.

- 1 Insert the red plug of the red/white audio cables (not supplied) to the red socket AUX IN R and the white plug to the white socket AUX IN L.
- 2 Connect the other end of the audio cables to the AUDIO OUT terminals of the additional appliance.

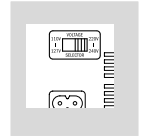
Helpful hints:

- If the connected device has only a single audio out terminal, connect it to the AUX IN left terminal. Alternatively, you can use a "single to double" cinch cable, but the output sound still remain mono.
- Always refer to the owner's manual of other equipment for complete connection.



Using AC power

- 1 If your system is equipped with a VOLTAGE SELECTOR, set this selector to your local power voltage if necessary.
- 2 Make sure all connections have been made before switching on the power supply.
- 3 Connect the power cable supplied to **AC MAINS ~** and to the wall socket. This switches on the power supply.



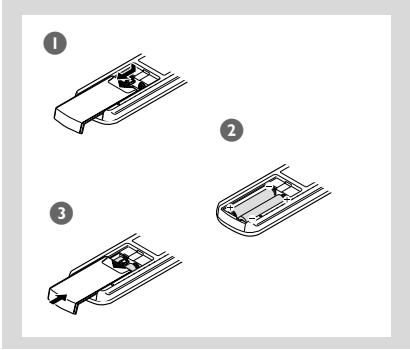
When the system is switched to standby, it is still consuming some power. **To disconnect the system from the power supply completely, remove the power plug from the wall socket.**

The type plate is located on the rear of the set.

Installation

Inserting batteries into the remote control

Insert two batteries type R03 or AAA (not supplied) into the remote control with the correct polarity as indicated by the "+" and "-" symbols inside the battery compartment.



CAUTION!

- Remove batteries if they are exhausted or will not be used for a long time.
- Do not use old and new or different types of batteries in combination.
- Batteries contain chemical substances, so they should be disposed off properly.

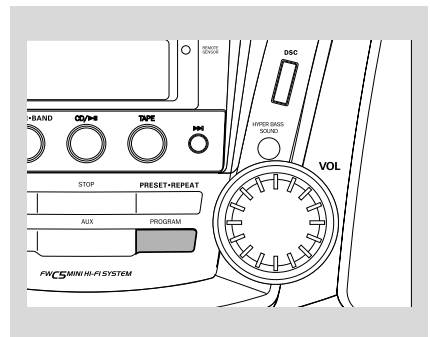
Setting the clock

The time is displayed using the 12-hour clock.

- 1 Check the system is switched to standby mode. (see Basic Functions, Switch on/to standby)
→ **AM** 12: 00 flashes by default if the clock is not set.
- 2 On the system, press and hold **PROGRAM** for more than 2 seconds.
→ The hour digits start flashing.



- 3 Hold down or press **◀◀** or **▶▶** repeatedly to set the hour. Release **◀◀** or **▶▶** when you have reached the correct setting.
- 4 Press **PROGRAM** to confirm the setting.
→ The minute digits start flashing.
- 5 Repeat step 3 to set the minute.
- 6 Press **PROGRAM** to confirm the setting.
→ The clock shows the set time.

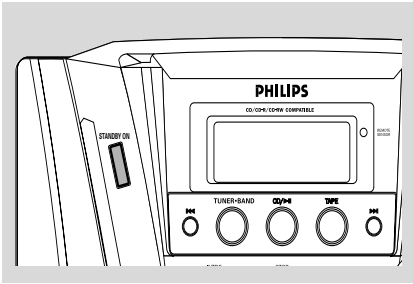


Helpful hints:

- You may lose your clock setting when the power cord is disconnected or power failure occurs.

Switching on/to standby and selecting functions

- 1 Press **STANDBY-ON** to switch on.
→ The display lights up blue.
→ The system switches to the last source selected.
- 2 To select your function, press **TUNER-BAND**, **CD** • **▶ II** or **TAPE**.
- 3 Press **STANDBY-ON** to switch the system to standby.
→ The clock is displayed.



IMPORTANT!

– Adjust the volume to a moderate level before you switch the system to standby mode.

Helpful hints:

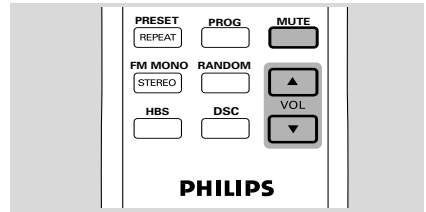
– In the standby mode, the tone, sound settings, tuner presets, and the volume level will be retained in the system's memory.

Volume control

- 1 Check the system is switched on.
- 2 Adjust the volume with **VOL** rotary (on the remote control, press **VOL ▲/▼**).
→ Display shows **VOL** and a number from 00 - 40.

IMPORTANT!

– Adjust the volume to a moderate level before you switch the system to standby mode or plug in the headphones.



MUTE

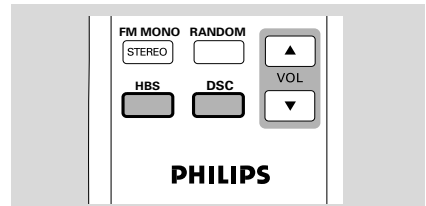
During playback, you can temporarily switch off the sound without switching off the set.

- 1 On the remote control, press **MUTE** to switch off the sound.
→ Display shows **MUTE**.
Playback continues without sound.
- 2 To switch on the sound, press **MUTE** again or adjust the volume with **VOL** rotary (on the remote control, press **VOL ▲/▼**).

Sound control

DSC (Digital Sound Control)

Digital Sound Control enables you to select predefined sound settings.



- Press **DSC** repeatedly to select your desired sound setting:
→ **FLAT**, **ROCK**, **JAZZ**, **POP** or **CLASSIC** is displayed.

HYPER BASS SOUND (HBS)

- Press **HYPER BASS SOUND** once or more to turn bass enhancement on or off (or **HBS** on the remote control)
→ **HBS** appears when **HYPER BASS SOUND** is activated.

Helpful hints:

– Some discs or tapes might be recorded in high modulation, which causes a distortion at high volume. If this occurs, switch off **HYPER BASS SOUND** or reduce the volume.

CD Operation

Discs for playback

This system can playback all digital audio CD, finalized digital audio CD-Recordable (CDR) discs and finalized digital audio CD-Rewritable (CDRW) discs.

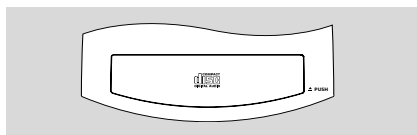


IMPORTANT!

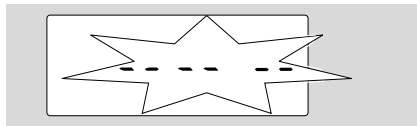
- This system is designed for regular discs. Therefore, do not use any accessories such as disc stabilizer rings or disc treatment sheets, etc.
- CDs encoded with copyright protection technologies by some record companies may be unplayable by this system.

Playing discs

- 1 Press **STANDBY-ON** to on, then press **CD • ▶ II** to select **CD**.
- 2 Press **▲PUSH** to open the disc door.
→ Display shows **OPEN**.



- 3 Insert a CD/CD-R(W) with the printed side facing up and press the CD door gently close.
→ Display shows **-----** and later, the total playing time and total number of tracks.



- 4 Press **CD • ▶ II** to start playback.
- 5 To pause playback, press **CD • ▶ II**. Press **CD • ▶ II** to resume playback.
- 6 To stop playback, press **STOP** (or **■** on the remot control)

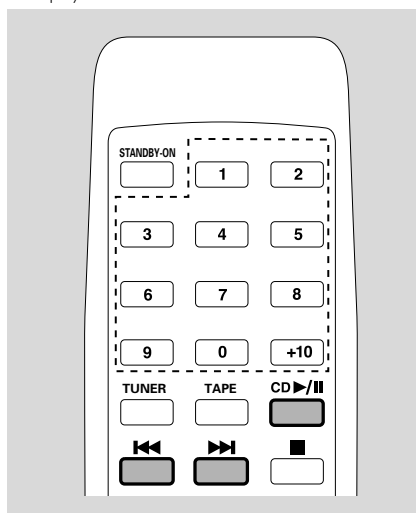
Helpful hints: CD playback will also stop when:

- you open the CD compartment;
- you select **TUNER** or **TAPE**;
- the CD has reached the end.

Selecting and searching

Selecting a different track

- Either briefly press **◀◀** or **▶▶** once or several times to skip to the beginning of the current, previous or subsequent track.
or
Use the digit keys on the remote control to select the track number directly, e.g.
Track 3: Press 3
Track 10: Press +10 and then, 0
Track 13: Press +10 and then, 3
Track 23: Press +10, +10 and then, 3.
- In the pause/stop position, press **CD • ▶ II** to start playback.



Finding a passage within a track

- 1 During playback, press and hold **◀◀** or **▶▶**.
→ The CD plays at a high speed.
- 2 When you recognize the passage you want, release **◀◀** or **▶▶**.
→ Normal playback resumes.

Helpful hints:

- In **RANDOM** mode, press **◀◀** to return to the beginning of current track.

Programming tracks

You may store up to 16 tracks in the desired sequence. If you like, store any track more than once.

- In the stop position, press **PROGRAM** to activate programming (or **PROG** on the remote control).
→ Display shows **Pr:01**, indicating the start of the program. **PROGRAM** appears.



- Press **◀** or **▶** to select your desired track. (See **Selecting a different track**)
- Press **PROGRAM** to store the desired track number.
→ Display shows **Pr:02** (up to 16 in sequence), indicating the next program location available.
- Repeat steps **2** to **3** to select and store all desired tracks in this way.
- To play your program, press **CD • ▶ II**.

Helpful hints:

– If you store more than 16 tracks, the display will show the 1st track in the program. At this time, you can still store a new track, but the new track will replace the 1st track in the program.

To review the program


- In the stop position, press repeatedly **PROGRAM** to see your stored track numbers.

Erasing the program

- You can erase the contents of the memory by:
 - Opening the CD door;
 - Pressing **STOP** twice during playback and once in the stop position.
 → **PROGRAM** disappears.

Different play modes: REPEAT, RANDOM and INTRO

You can select and change the various play modes before or during playback, and combine the REPEAT or INTRO modes with PROGRAM.

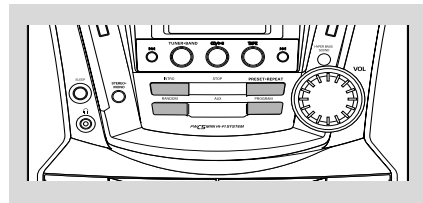
-  **REPEAT** – plays the current track continuously.
- REPEAT** – repeats the entire disc/program.
- RANDOM** – tracks of the entire disc are played in random order.
- REPEAT RANDOM** – repeats the entire CD in random order.
- INTRO** – Each track in the disc/program plays 10 seconds in sequence.



- To select play modes, press once or more **PRESET • REPEAT** or/and **RANDOM**, or **INTRO**.
- Press **CD • ▶ II** to start playback if in the stop position.
- To return to normal playback, press **PRESET • REPEAT, RANDOM** or **INTRO** repeatedly until the various modes are no longer displayed.
→ You can also open the CD door to cancel your play mode.

Helpful hints:

– In the program mode, you will exit the program by pressing **RANDOM**. To return to the program, press **PROGRAM** in the stop position.
– **RANDOM** mode is cancelled if you press **PROGRAM** in the stop position.



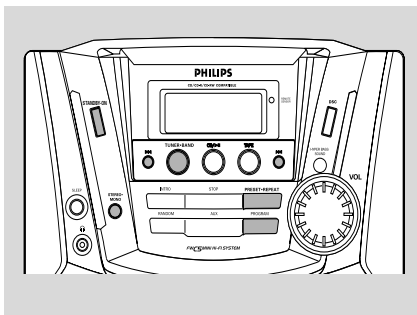
Radio Reception

Tuning to radio stations

- 1 Press **STANDBY-ON** to on, then press **TUNER-BAND** to select TUNER mode.
→ Display: the waveband, radio station frequency and if programmed, a preset number are shown.



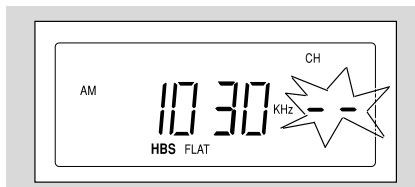
- 2 Press **TUNER-BAND** once or more to select your waveband: FM or AM (MW).
 - 3 Press and hold **◀◀** or **▶▶** until the frequency in the display starts running.
→ The radio automatically tunes to a station of sufficient reception.
→ If a FM station is received in stereo, **STEREO** is shown.
 - 4 Repeat step 3 if necessary until you find the desired radio station.
- To tune to a weak station, press **◀◀** or **▶▶** briefly and repeatedly until optimal reception is found.
 - To tune to a weak FM station, press **STEREO-MONO** once or more until **MONO** appears on the display.



Storing preset radio stations

You can store up to 32 preset radio stations in the memory (20 FM and 12AM).

- 1 Tune to your desired radio station (see "Tuning to radio stations").
- 2 Press **PROGRAM** to activate programming. (or **PROG** on the remote control)
→ Display shows: current radio frequency and **CH. --** flashes for you to enter a preset number.



- 3 Press **PRESET-REPEAT** to select a preset number.
- 4 Press **PROGRAM** to confirm.
- 5 Repeat steps 1-4 to store other stations.

Helpful hints:

– You can erase a preset station by storing another frequency in its place.

To listen to a preset station

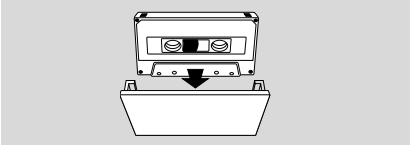
- Either press **PRESET-REPEAT** once or more until the desired preset station is displayed.
- Or press **digits 0 - +10** on remote control to select the desired preset station. e.g.
Preset 3: Press 3
Preset 10: Press +10 and then, 0
Preset 13: Press +10 and then, 3
Preset 20: Press +10, +10 and then, 0.

IMPORTANT!

- Before playing a tape, check and tighten slack tape with a pencil. Slack tape may jam or burst in the mechanism.
- C-120 tape is extremely thin and is easily deformed or damaged. It is not recommended for use in this system.
- Store the tapes at room temperature and do not put them too close to a magnetic field (for example, a transformer, TV or speaker).

Loading tapes

- 1 Press **STANDBY-ON** to on, then press **TAPE** to select TAPE mode.
→ Display: shows **TAPE**.



- 2 Press **STOP•OPEN** to open the tape deck door.
- 3 Load the tape with the open side downward and full spool to the left.
- 4 Close the tape deck door.

Playing tapes

To playback a selected tape

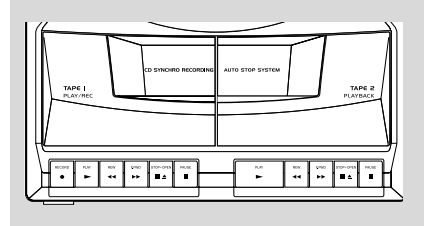
- Press **PLAY** on tape deck 1 or 2.
→ The tape will stop at the end of playback..

Continuous playback of two tapes

- 1 Load the tapes in tape deck 1 and 2.
- 2 Press **PLAY** on tape deck 2.
- 3 On tape deck 1, press **PAUSE II** and then, **PLAY**.
→ Playback will begin from tape deck 2 and continue with tape deck 1. It will stop at the end of tape deck 1.
- 4 To pause playback, press **PAUSE II**. To resume playback, press **PAUSE II** again.
- 5 By pressing **REW** / **F. FWD**, fast winding of the tape is possible in both directions. To stop fast winding, press **STOP•OPEN**.
- 6 To stop the tape, press **STOP•OPEN**.

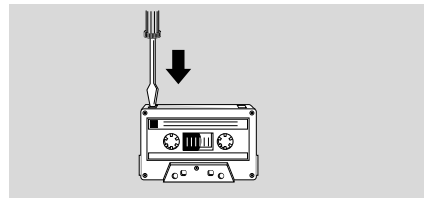
Helpful hints:

- During playback, the keys are automatically released at the end of a tape and the set is switched off (unless **PAUSE II** has been activated).
- During fast forwarding/rewinding, the keys will not be released at the end of a tape. To stop fast winding, press **STOP•OPEN**.



General information on recording

- For recording, use only tape of IEC type I (normal tape).
- The recording level is set automatically, regardless of the position of the Volume, DBB, DSC and so forth.
- The tape is secured at both ends with leader tape. At the beginning and end of the tape, nothing will be recorded for six to seven seconds.
- To prevent accidental recording, break out the tab on the left shoulder of the tape side you want to protect.



IMPORTANT!

- Recording is permissible if copyright or other rights of third parties are not infringing upon.
- Recording is possible only on tape deck 1.

Tape Operation / Recording

Preparation for recording

- 1 Load a recordable tape into tape deck 1 with full spool to the left.
- 2 Prepare the source to be recorded.
CD – load a disc.
TUNER – tune to the desired radio station.
TAPE – load the prerecorded tape into tape deck 2 with the full spool to the left.
AUX – connect an external audio appliance.

One touch recording

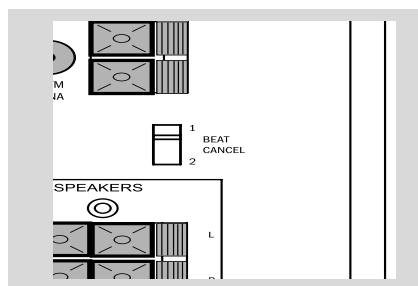
- 1 Press **CD** • **▶ II**, **TUNER**•**BAND** or **AUX** to select the source.
- 2 Start playback of the selected source.
- 3 Press **RECORD** ● on tape deck 1 to start recording.

To stop recording

- Press **STOP**•**OPEN** ■▲ on tape deck 1.

Helpful hints:

– When recording from AM (MW) radio stations, adjust **BEAT CANCEL** to 1 or 2, if necessary, to reduce interference.



Synchro start CD recording

- 1 Select **CD** source and stop CD playback, if necessary.
- If desired, program track numbers.
- 2 Press **RECORD** ● on tape deck 1 to start recording.
→ Playing of the CD/program starts automatically from the beginning. It is not necessary to start the CD player separately.

To stop recording

- Press ■▲ on tape deck 1

Dubbing tapes

- 1 Load the prerecorded tape in tape deck 2.
- Make sure both tapes have their full spool to the left.
- 2 On tape deck 1, press **PAUSE** ■■ and then, **RECORD** ●.
- 3 Press **PLAY** ▶ on tape deck 2.
→ Recording starts.
- Dubbing of tapes is possible on one side of the tape only. To continue recording on the reverse side, at the end of side A, flip the tape to side B and repeat steps 1-3.

To stop dubbing

- Press ■▲ on tape deck 1 and 2.

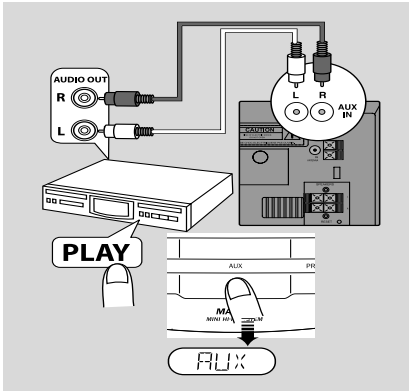
Helpful hints:

– To ensure good dubbing, use tapes of the same length.

AUX (Listening to an external source)

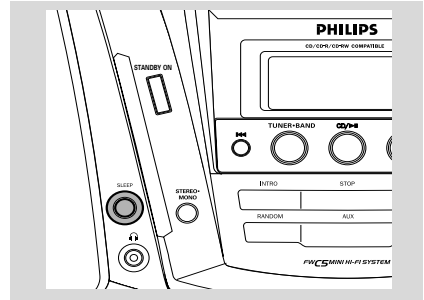
You can listen to the sound of the connected external device through your system's speakers.

- 1 Check the external device has been properly connected. (See **Installation, Connecting an additional appliance**)
- 2 Press **STANDBY-ON** to on, then press **AUX** to select AUX mode.
→ Display shows : **AUX 4**
- 3 To avoid noise distortion, turn down the volume on your external device.
- 4 Press the **PLAY** key on the connected device to start playback.
- 5 To adjust the sound and volume, use the sound controls on your external equipment and the FWC 5.



SLEEP

You can set a certain period of time after which the set will switch to standby.



- 1 Press **SLEEP** repeatedly to select the desired time period options (in minutes):
→ Display shows in sequence: **SLP 10, 20, 30, 40, 50, 60, 70, 80, 90, 00**.
→ Display shows the selected option briefly and returns to its previous status.
- 2 To view the time countdown to the standby mode, press **SLEEP** again.

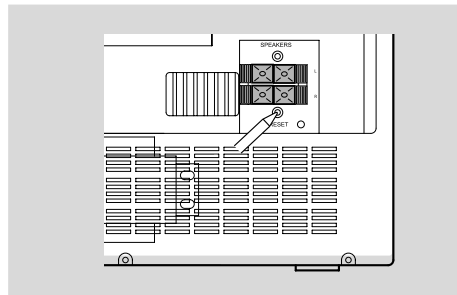
To deactivate the sleep timer; press **SLEEP** until **SLP 00** is display or press **STANDBY-ON** to switch the system to standby.

RESET

RESET

If desired, you can restore your system to its default setting.

- 1 Remove the power plug from the wall socket.
- 2 Use a ballpoint pen to press the **RESET** for more than 30 seconds.
- 3 Reconnect the power plug .
→ **AM 12:00** flashes.
→ The system is restored to its default setting.



Specifications

AMPLIFIER

Output power 600 W PMPO
..... 2 x 10 W RMS
Signal-to-noise ratio ≥ 67 dBA (IEC)
Frequency response 50 – 15000 Hz
Impedance loudspeakers 6 Ω
Impedance headphones 32 Ω -1000 Ω
(1) (6 Ω , 60 Hz – 12.5 kHz, 10% THD)

CD PLAYER

Number of programmable tracks 16
Frequency range 20 – 20000 Hz
Signal-to-noise ratio ≥ 50 dBA
Channel separation ≥ 25 dB (1 kHz)
Total harmonic distortion < 3%

TUNER

FM wave range 87.90 – 107.90 MHz
AM (MW) wave range 520 – 1710 kHz
Number of presets 32
Antenna
FM 300 Ω dipole wire
AM Loop antenna

TAPE DECK

Frequency response
Normal tape (type I) 50 – 10000 Hz (8 dB)
Signal-to-noise ratio
Normal tape (type I) ≥ 48 dBA
Wow and flutter $\leq 0.35\%$ DIN

SPEAKERS

System double port bass reflex
Impedance 6 Ω
Woofer 1 x 4" full range
Dimensions (w x h x d)
..... 7.2 x 12.2 x 6.5 (inch)
..... 183 x 310 x 165 (mm)
Weight 3.4 pounds each
..... 1.6 kg each

GENERAL INFORMATION

Material Polystyrene
AC Power 110 -127 V / 220 - 240 V
60 / 50 Hz switchable
Power Consumption
Active 40 W
Standby ≤ 7 W
Dimensions (w x h x d)
..... 10.56 x 12.75 x 10 (inch)
..... 267 x 298 x 254 (mm)
Weight (without speakers) 7.8 pounds
..... 3.5 kg

Specifications and external appearance are subject to change without notice.

WARNING

Under no circumstances should you try to repair the system yourself, as this will invalidate the warranty. Do not open the system as there is a risk of electric shock.

If a fault occurs, first check the points listed below before taking the system for repair. If you are unable to remedy a problem by following these hints, consult your dealer or Philips for help.

Problem	Solution
no d I S C / E r r is displayed.	<ul style="list-style-type: none"> ✓ Insert a suitable disc. ✓ Check if the disc is inserted upside down. ✓ Wait until the moisture condensation at the lens has cleared. ✓ Replace or clean the disc, see "Maintenance". ✓ Use a finalized CD-RW or CD-R.
Radio reception is poor.	<ul style="list-style-type: none"> ✓ If the signal is too weak, adjust the antenna or connect an external antenna for better reception. ✓ Increase the distance between the Mini HiFi System and your TV or VCR.
Recording or playback cannot be made.	<ul style="list-style-type: none"> ✓ Clean deck parts, see "Maintenance". ✓ Use only NORMAL (IEC I) tape. ✓ Apply a piece of adhesive tape over the missing tab space.
The system does not react when buttons are pressed.	<ul style="list-style-type: none"> ✓ Reset the system (see RESET chapter),
Sound cannot be heard or is of poor quality.	<ul style="list-style-type: none"> ✓ Adjust the volume. ✓ Disconnect the headphones. ✓ Check that the speakers are connected correctly. ✓ Check if the stripped speaker wire is clamped. ✓ Switch off MUTE.
The left and right sound outputs are reversed.	<ul style="list-style-type: none"> ✓ Check the speaker connections and location.
The remote control does not function properly.	<ul style="list-style-type: none"> ✓ Reduce the distance between the remote control and the system. ✓ Insert the batteries with their polarities (+/- signs) aligned as indicated. ✓ Replace the batteries. ✓ Point the remote control directly towards the IR sensor.
The Clock setting is erased.	<ul style="list-style-type: none"> ✓ Power has been interrupted or the power cord has been disconnected. Reset the clock/timer.