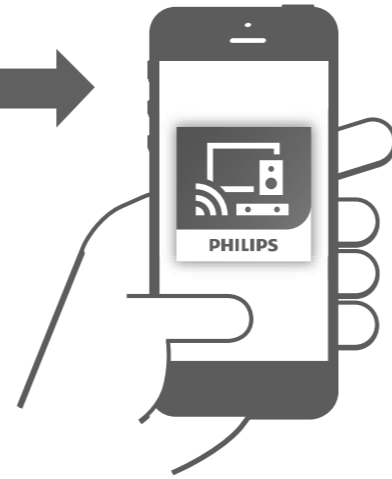
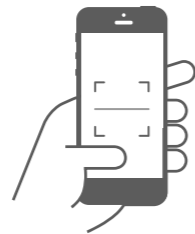


快速操作指南



扫描下方二维码



Download on the App Store

Philips Sound

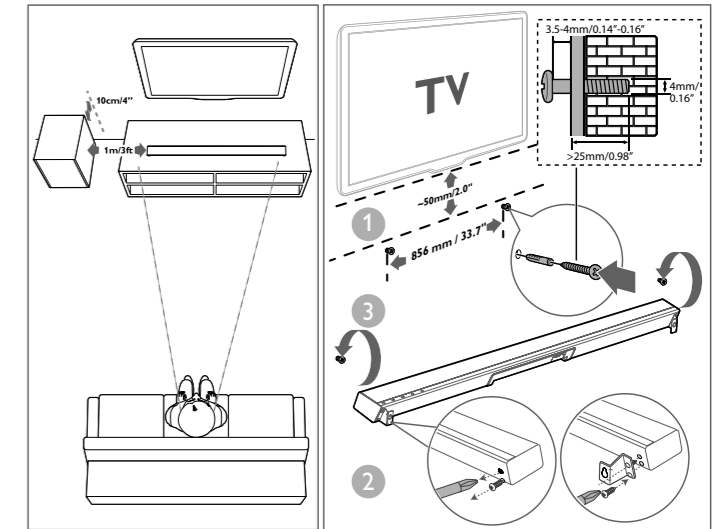


在以下网站上注册产品并获得支持
www.philips.com/support

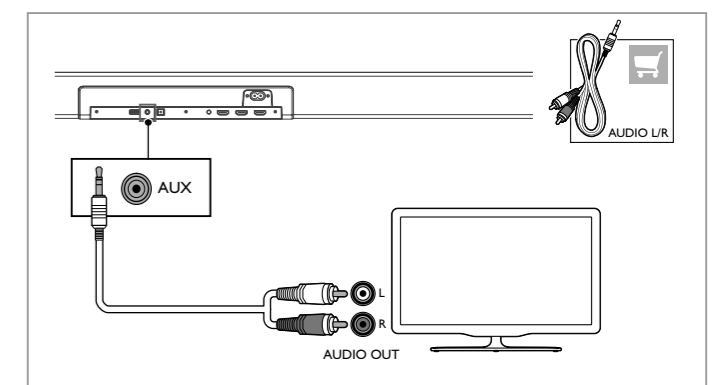
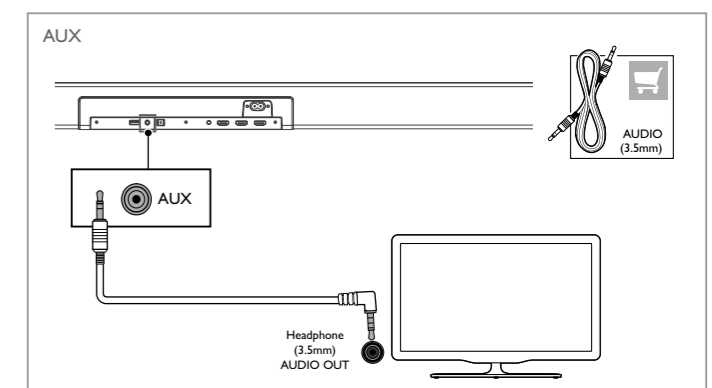
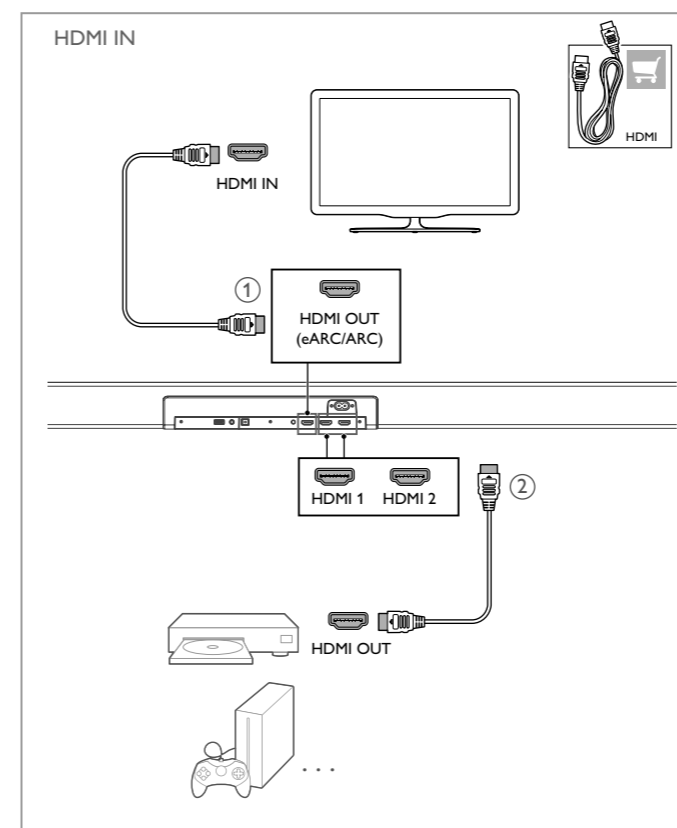
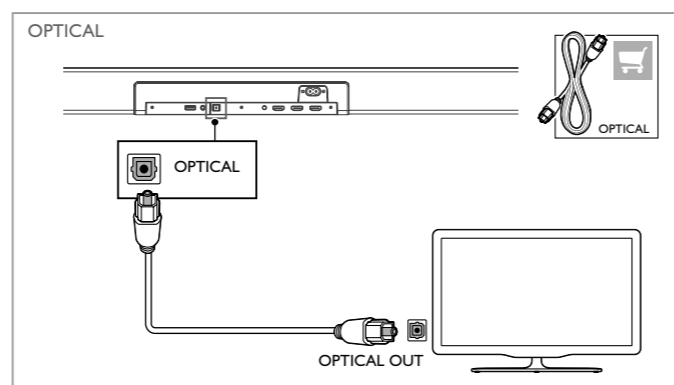
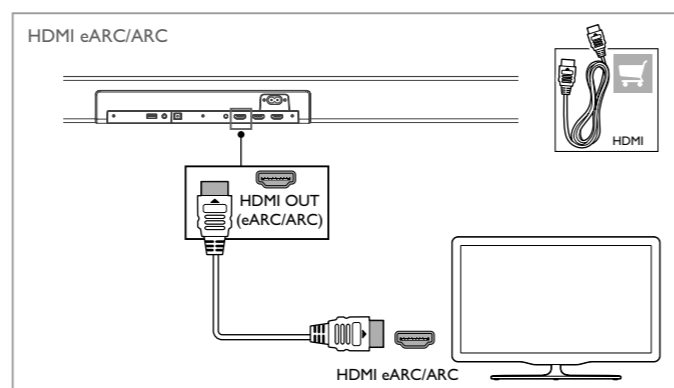
包装盒内物品



1 安放音箱 壁挂音箱 (可选)



2 以如下某种方式通过电视收听音频

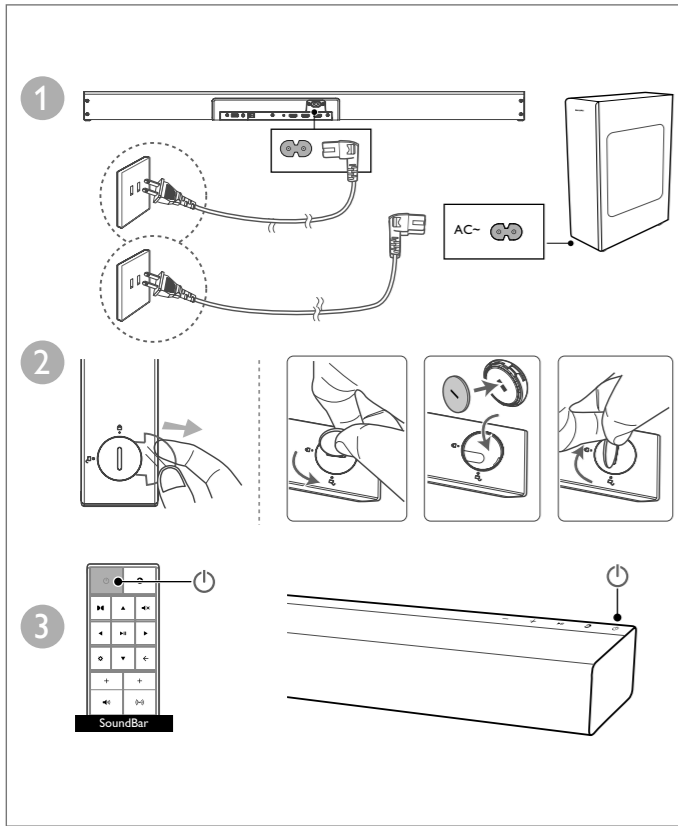


Philips and Philips Shield Emblem are registered trademarks of Koninklijke Philips N.V. and are used under license. This product has been manufactured by and is sold under the responsibility of MMD Hong Kong Holding Limited, or one of its affiliates and MMD Hong Kong Holding Limited, is the warrantor in relation to this product.

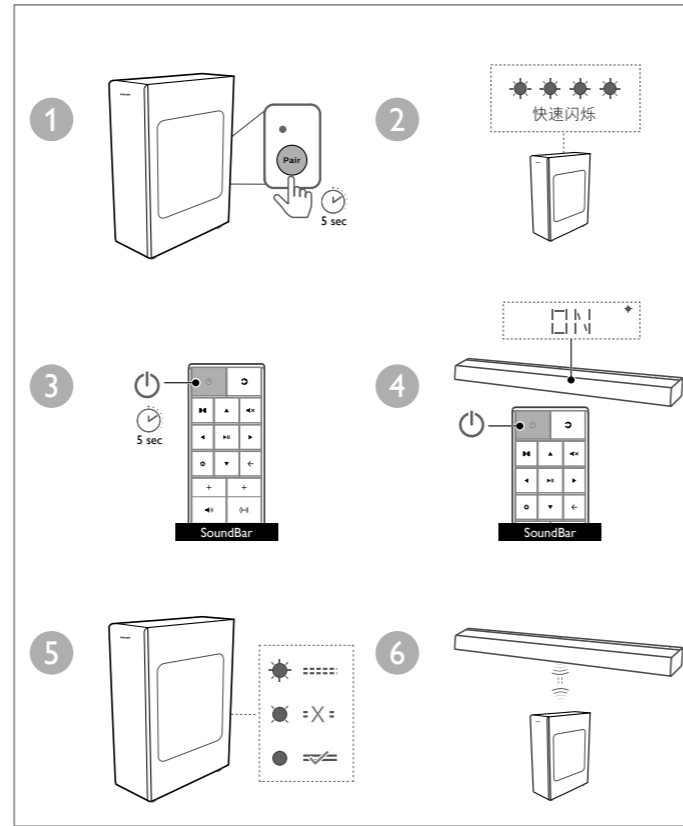
Be responsible
Respect copyrights



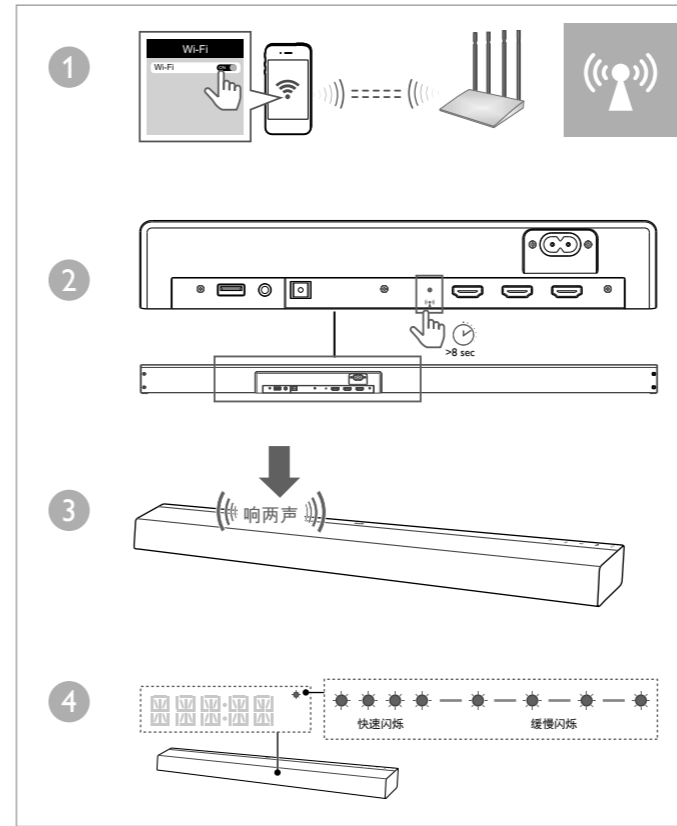
3 开启音箱



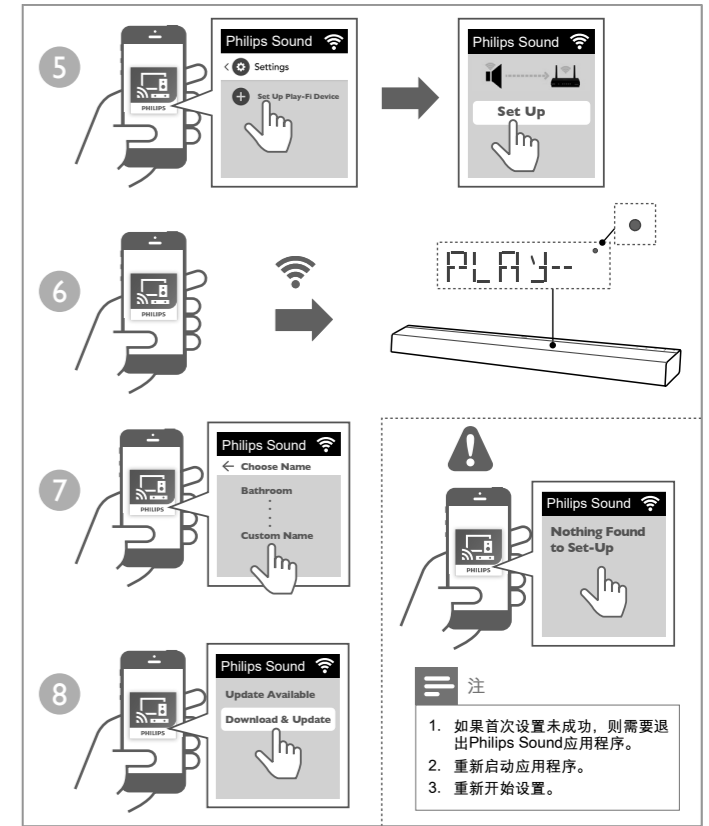
手动设置低音炮 (如果无法自动连接 / 无声音)



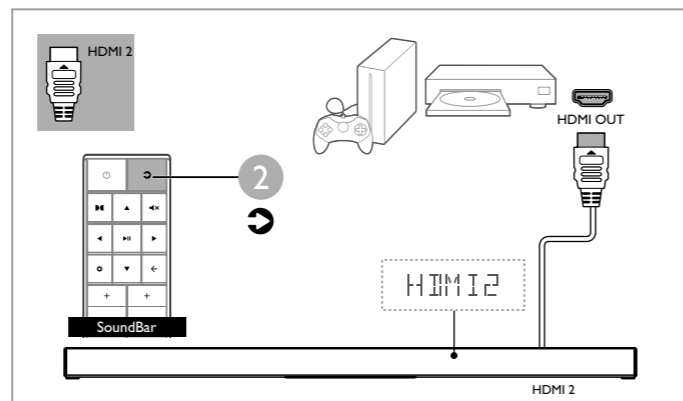
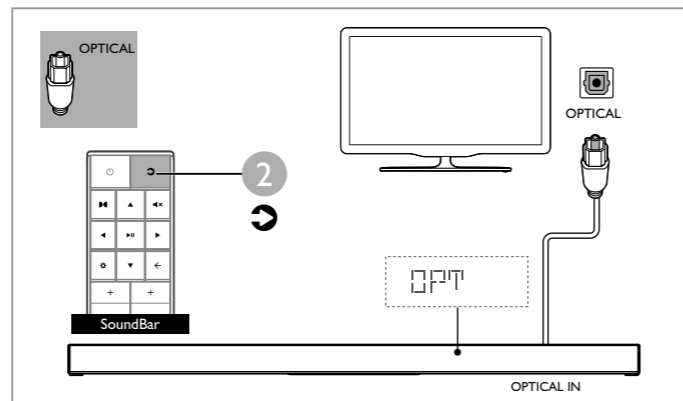
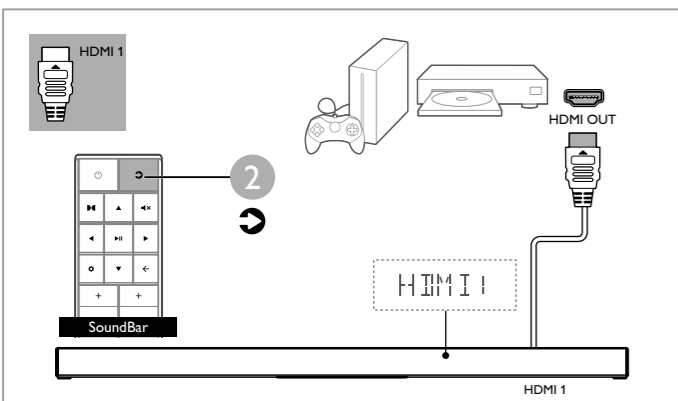
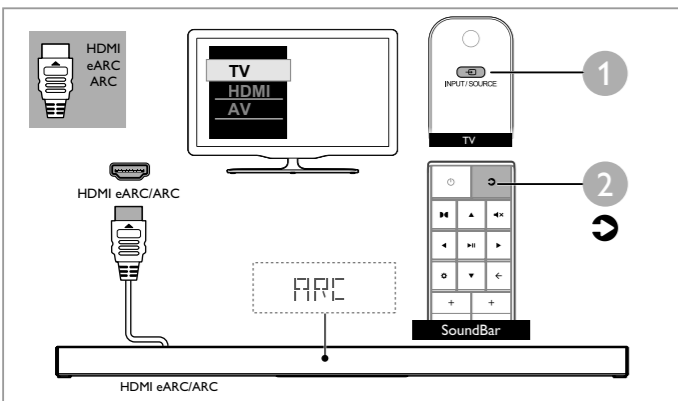
4 Wi-Fi 设置



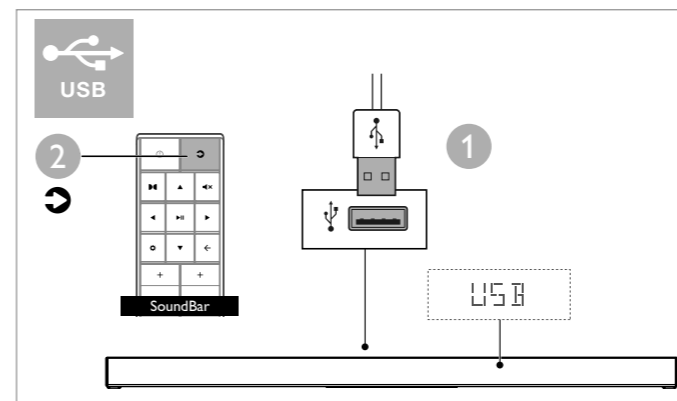
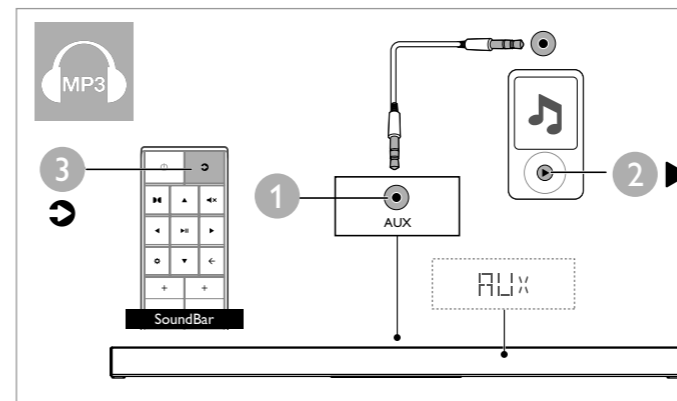
根据设备版本的不同，操作屏幕以及执行操作的方式可能有所不同。



5 选择正确的音频源



6 播放其他设备



7 通过蓝牙播放音频

