

Always there to help you  
Register your product and get support at  
[www.philips.com/welcome](http://www.philips.com/welcome)

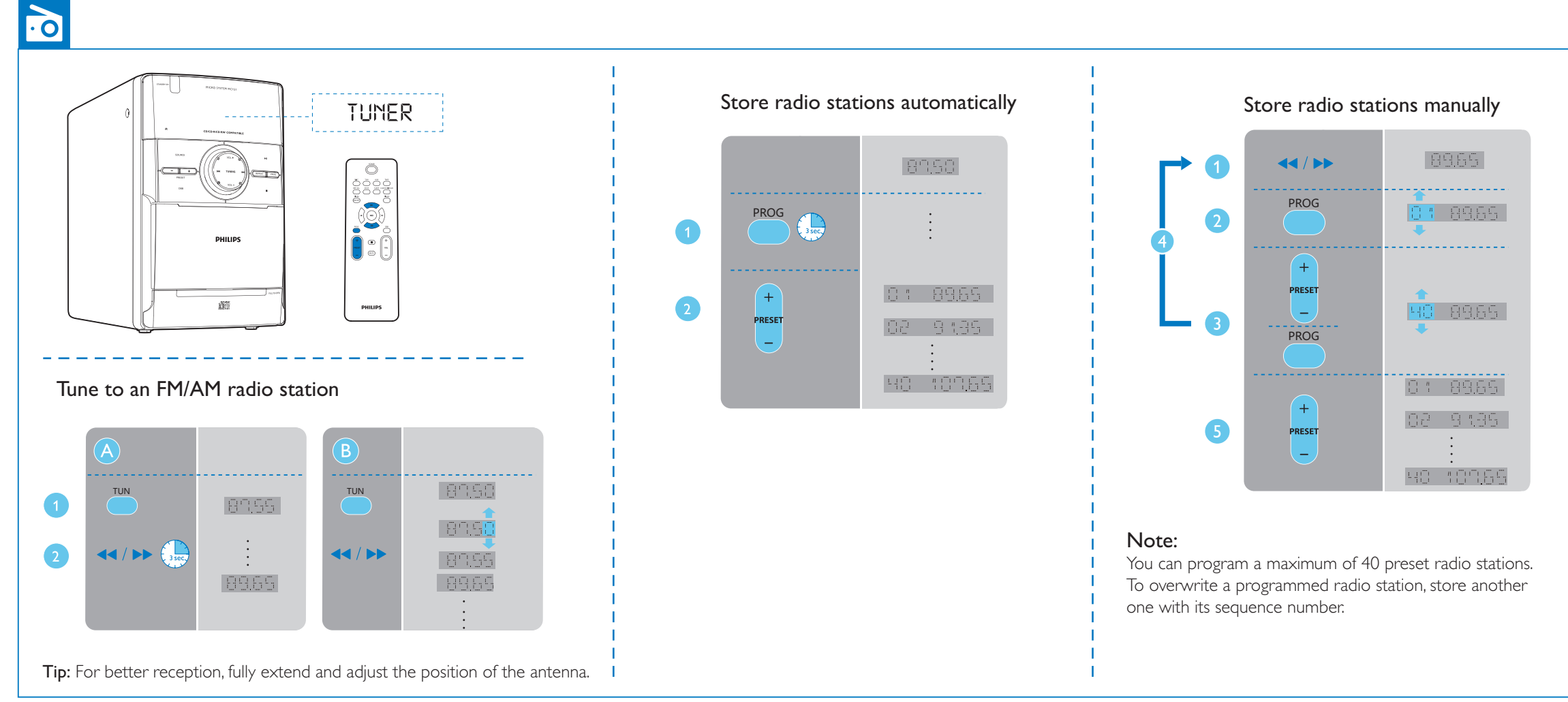
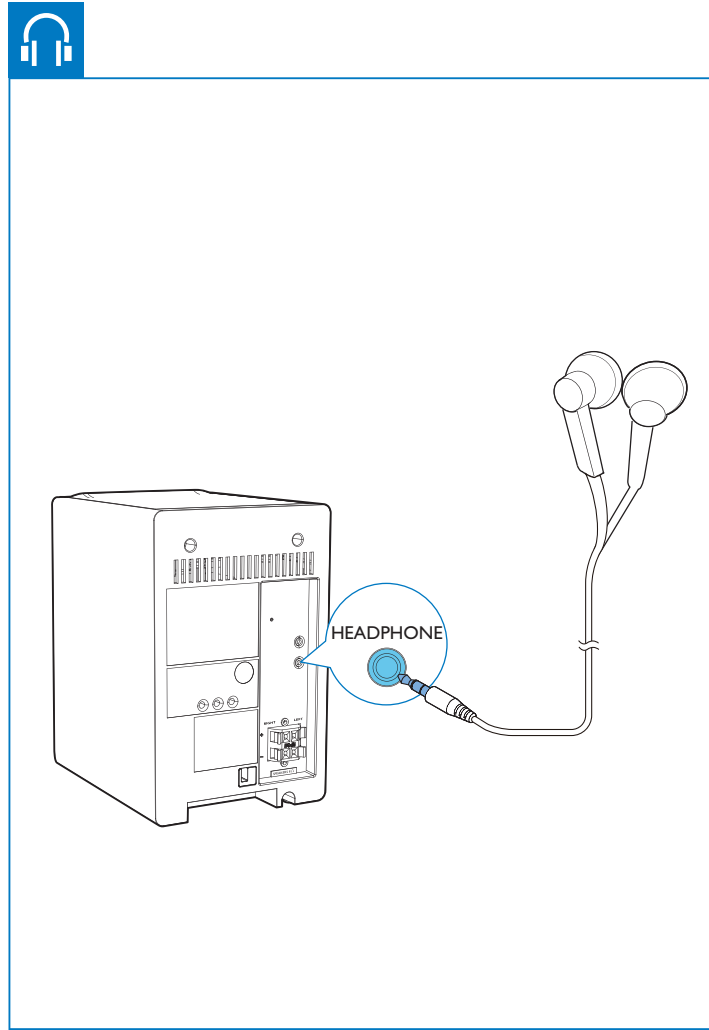
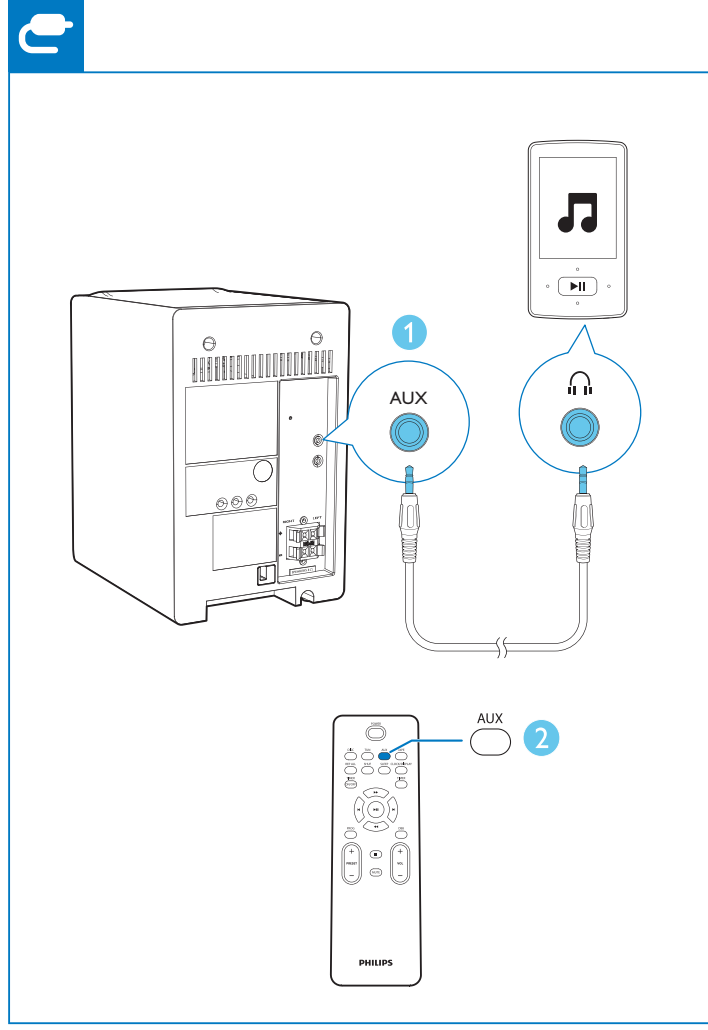
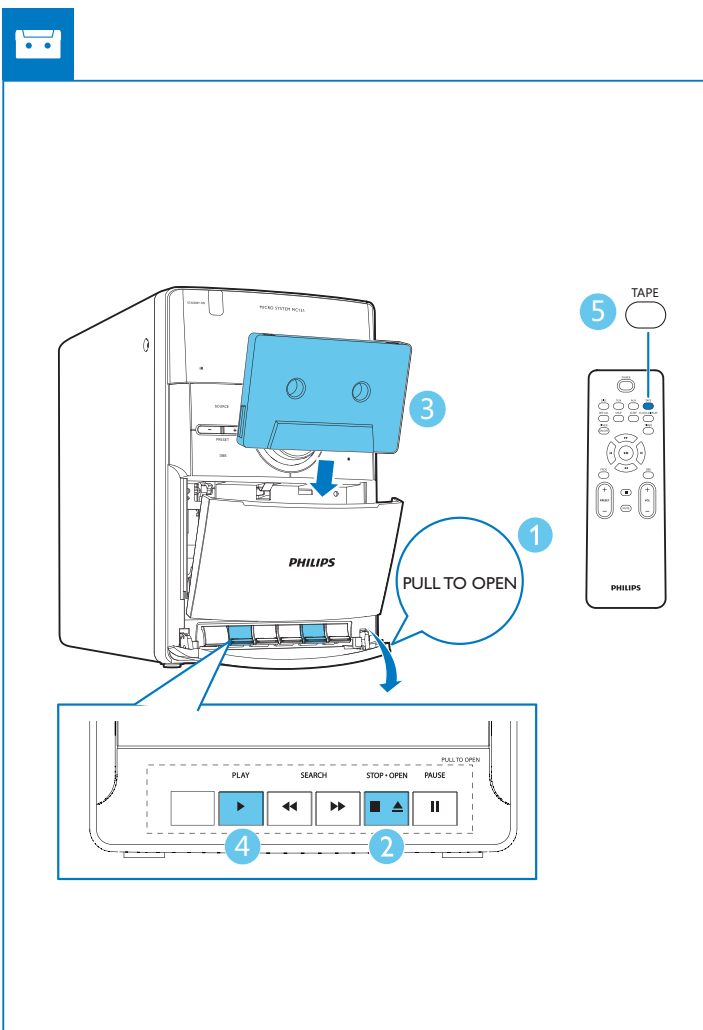
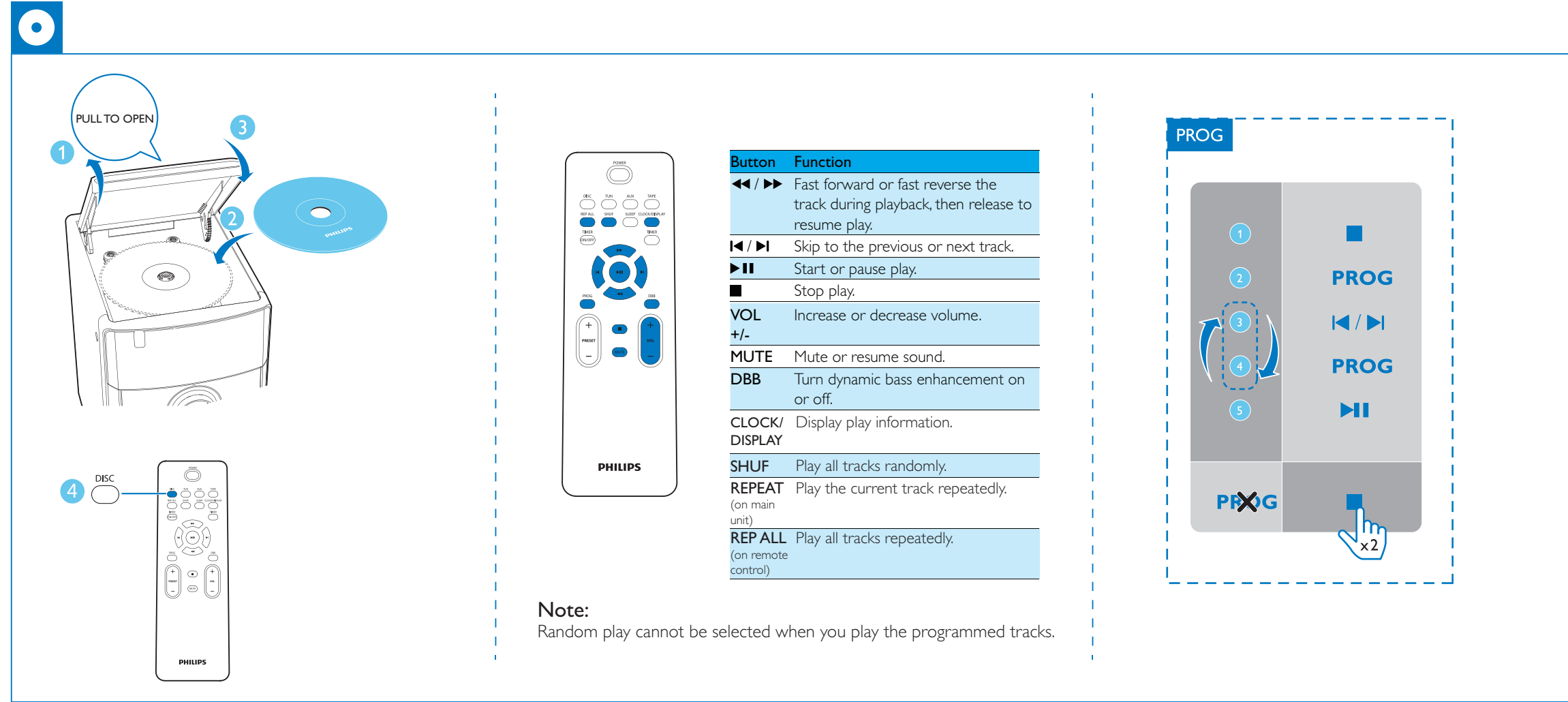
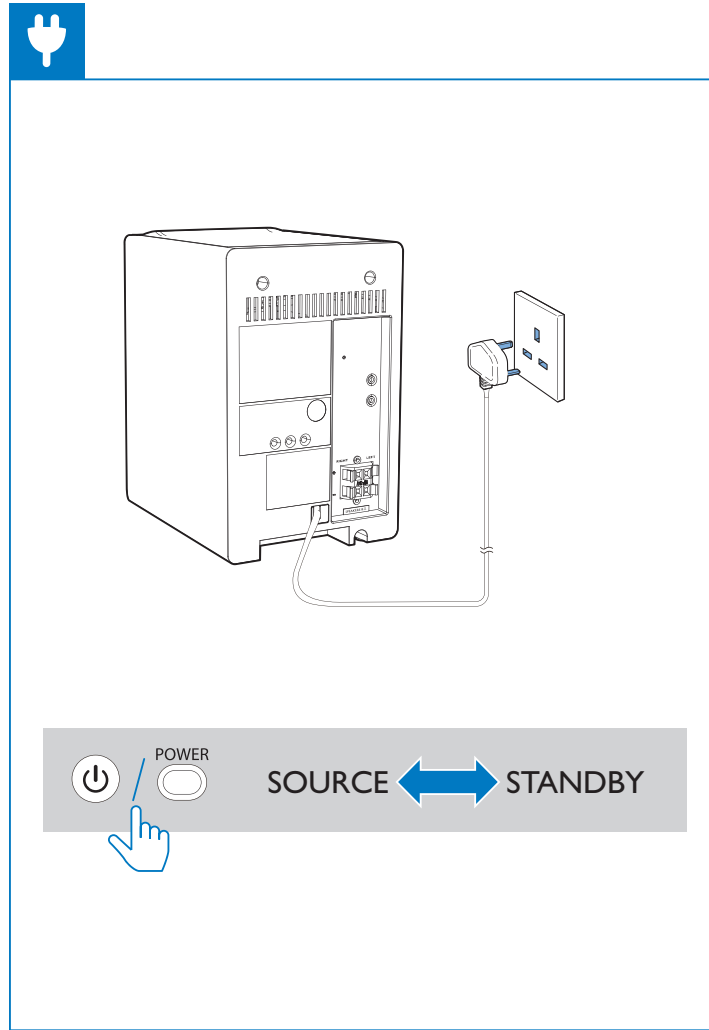
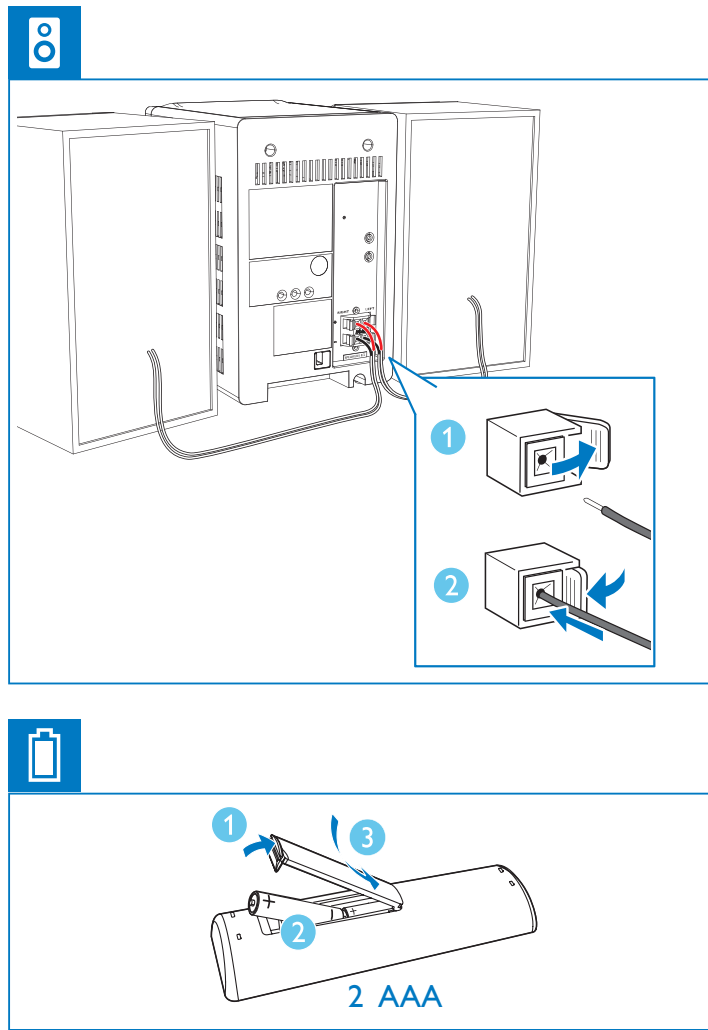
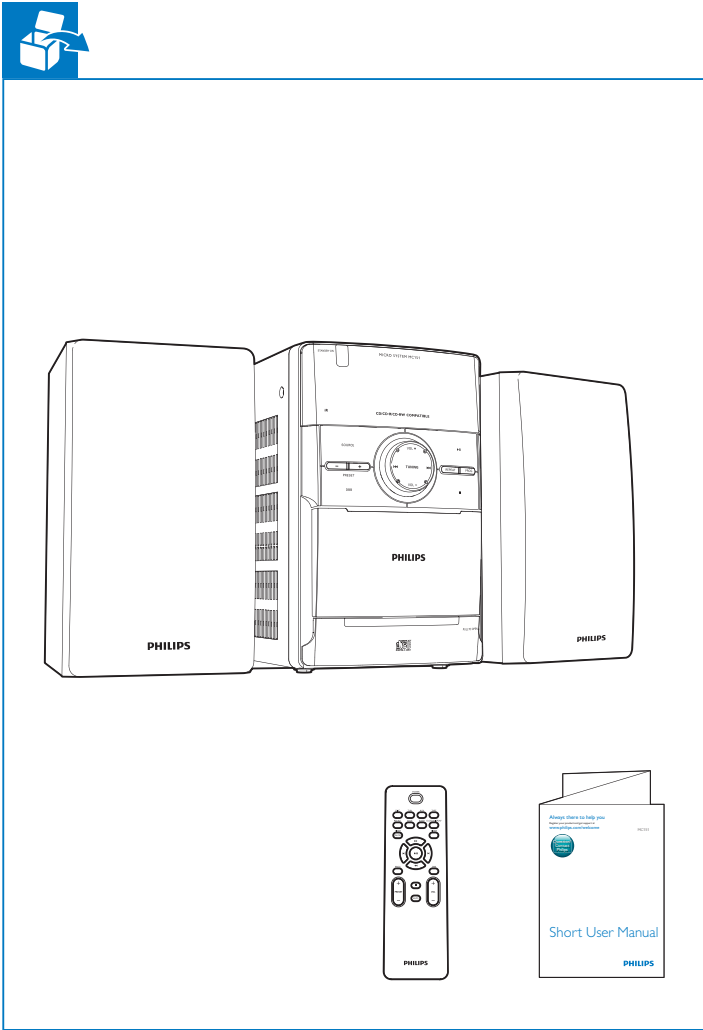
Question?  
Contact  
Philips

MC151



## Short User Manual

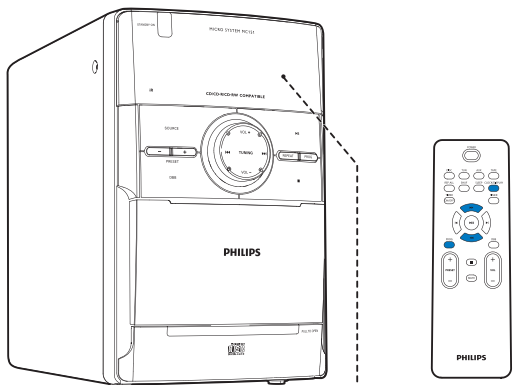
PHILIPS



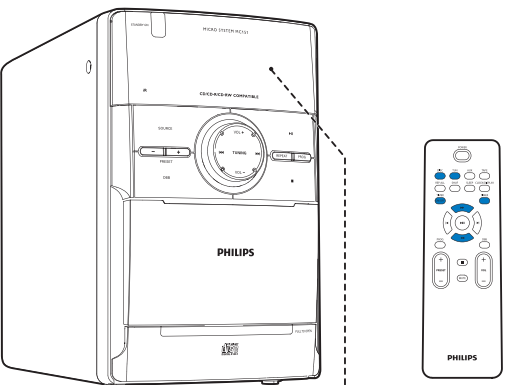
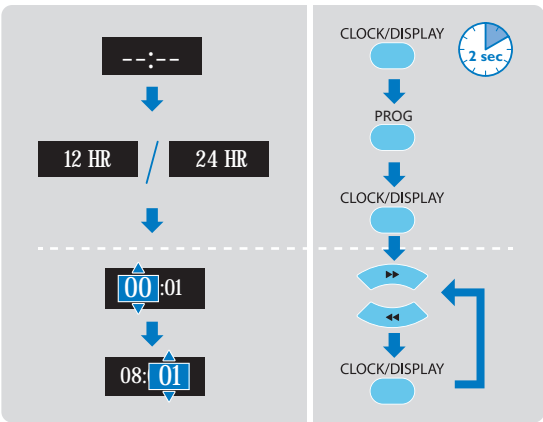
2013 © WOOX Innovations Limited. All rights reserved.  
This product was brought to the market by WOOX Innovations Limited or one of its affiliates, further referred to in this document as WOOX Innovations, and is the manufacturer of the product. WOOX Innovations is the warrantor in relation to the product with which this booklet was packaged.  
Philips and the Philips Shield Emblem are registered trademarks of Koninklijke Philips N.V.

MC151\_05\_Short User Manual\_V1.0

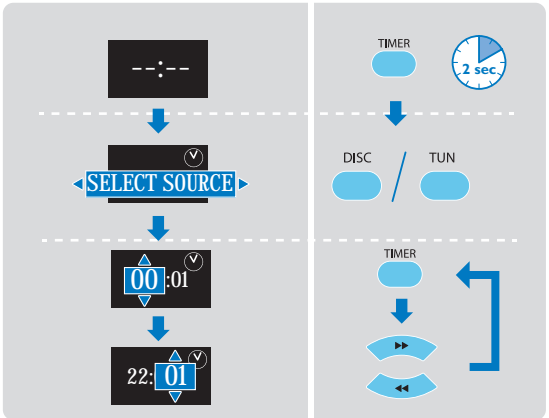




- 1 Press **POWER** to switch the system to standby mode.
- 2 Press and hold **CLOCK/DISPLAY** for 2 seconds to activate the clock setting mode.
- 3 Press **PROG** repeatedly to select 12 hour or 24 hour format.
- 4 Press **CLOCK/DISPLAY** to confirm.
- 5 Press **◀/▶** to set the hour.
- 6 Press **CLOCK/DISPLAY** to confirm.
- 7 Repeat steps 5-6 to set the minute.



- 1 Press **POWER** to switch the system to standby mode.
- 2 Press and hold **TIMER** for 2 seconds.
- 3 Press **DISC** or **TUN** to select an alarm source.
- 4 Press **TIMER** to confirm.
- 5 Press **◀/▶** to set the hour.
- 6 Press **TIMER** to confirm.
- 7 Repeat steps 5-6 to set the minute.



#### Note:

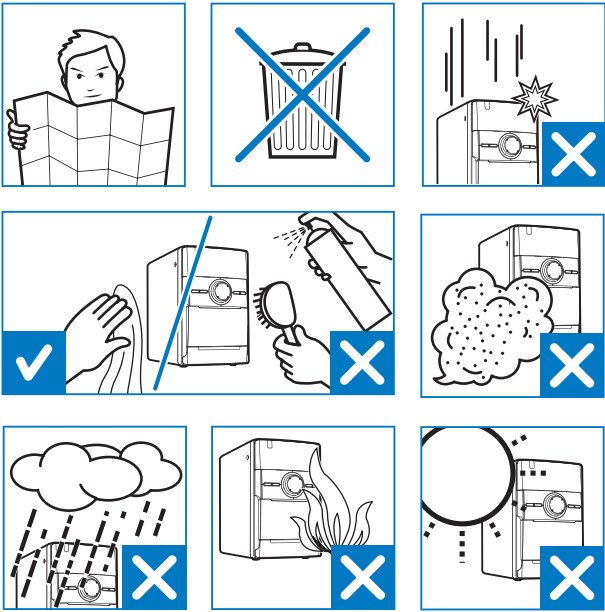
If DISC is selected and the audio cannot be played, tuner is activated automatically.  
To activate or deactivate the alarm timer, press **TIMER ON/OFF** repeatedly.



60 → 45 → 30 → 15  
↑                      ↓  
                    0

In working mode, press **SLEEP** to select a period (in minutes). After the set period, the product switches to standby mode automatically.

- To deactivate the sleep timer, press **SLEEP** repeatedly until [0] is displayed.



- plug is damaged, liquid has been spilled or objects have fallen into the device, the device has been exposed to rain or moisture, does not operate normally, or has been dropped.
- Battery usage **CAUTION** – To prevent battery leakage which may result in bodily injury, property damage, or damage to the unit:
    - Install all batteries correctly, + and - as marked on the unit.
    - Do not mix batteries (old and new or carbon and alkaline, etc.).
    - Batteries (packed or installed) shall not be exposed to excessive heat such as sunshine, fire or the like.
    - Remove batteries when the unit is not used for a long time.
  - The device shall not be exposed to dripping or splashing.
  - Do not place any sources of danger on the device (e.g. liquid filled objects, lighted candles).
- Where the MAINS plug or an appliance coupler is used as the disconnect device, the disconnect device shall remain readily operable.

#### Warning

- Never remove the casing of this apparatus.
- Never lubricate any part of this apparatus.
- Never place this apparatus on other electrical equipment.
- Keep this apparatus away from direct sunlight, naked flames or heat.
- Never look into the laser beam inside the apparatus.
- Ensure that you always have easy access to the power cord, plug or adaptor to disconnect the apparatus from the power.

#### Caution

- Use of controls or adjustments or performance of procedures other than herein may result in hazardous radiation exposure or other unsafe operation.

#### Mains fuse

This information applies only to products with a UK mains plug.  
This product is fitted with an approved molded plug. If you replace the fuse, use one with:

- the ratings shown on the plug,
- a BS 1362 approval, and
- the ASTA approval mark.

Contact your dealer if you are not sure about what type of fuse to use.  
Caution: To conform with the EMC directive (2004/108/EC), do not detach the plug from the power cord.

#### Hearing safety



- **Listen at a moderate volume.**
  - Using headphones at a high volume can impair your hearing. This product can produce sounds in decibel ranges that may cause hearing loss for a normal person, even for exposure less than a minute. The higher decibel ranges are offered for those that may have already experienced some hearing loss.
  - Sound can be deceiving. Over time your hearing 'comfort level' adapts to higher volumes of sound. So after prolonged listening, what sounds 'normal' can actually be loud and harmful to your hearing. To guard against this, set your volume to a safe level before your hearing adapts and leave it there.
- **To establish a safe volume level:**
  - Set your volume control at a low setting.
  - Slowly increase the sound until you can hear it comfortably and clearly, without distortion.
- **Listen for reasonable periods of time:**
  - Prolonged exposure to sound, even at normally 'safe' levels, can also cause hearing loss.
  - Be sure to use your equipment reasonably and take appropriate breaks.
- **Be sure to observe the following guidelines when using your headphones.**
  - Listen at reasonable volumes for reasonable periods of time.
  - Be careful not to adjust the volume as your hearing adapts.
  - Do not turn up the volume so high that you can't hear what's around you.
  - You should use caution or temporarily discontinue use in potentially hazardous situations.

#### Note

- The type plate is located on the back of the product.



## 1. Safety



This 'bolt of lightning' indicates uninsulated material within the device may cause an electrical shock. For the safety of everyone in your household, please do not remove the covering.  
The 'exclamation mark' calls attention to features for which you should read the enclosed literature closely to prevent operating and maintenance problems.  
**WARNING:** To reduce the risk of fire or electric shock, the device should not be exposed to rain or moisture and objects filled with liquids, such as vases, should not be placed on the device.  
**CAUTION:** To prevent electric shock, fully insert the plug. (For regions with polarized plugs: To prevent electric shock, match wide blade to wide slot.)

#### Important Safety Instructions

- Follow all instructions.
- Heed all warnings.
- Do not use this device near water.
- Clean only with dry cloth.
- Do not block any ventilation openings. Install in accordance with the manufacturer's instructions.
- Do not install near any heat sources such as radiators, heat registers, stoves, or other devices (including amplifiers) that produce heat.
- Protect the power cord from being walked on or pinched, particularly at plugs, convenience receptacles, and the point where they exit from the device.
- Only use attachments/accessories specified by the manufacturer.
- Use only with the cart, stand, tripod, bracket, or table specified by the manufacturer or sold with the device. When a cart is used, use caution when moving the cart/device combination to avoid injury from tip-over.
- Unplug this device during lightning storms or when unused for long periods of time.
- Refer all servicing to qualified service personnel. Servicing is required when the device has been damaged in any way, such as power-supply cord or

## 2. Notice

Any changes or modifications made to this device that are not expressly approved by WOOX Innovations may void the user's authority to operate the equipment.

#### Compliance



This product complies with the radio interference requirements of the European Community.  
This apparatus includes this label:



#### Care of the environment



Your product is designed and manufactured with high quality materials and components, which can be recycled and reused.



When this crossed-out wheeled bin symbol is attached to a product it means that the product is covered by the European Directive 2002/96/EC.  
Please inform yourself about the local separate collection system for electrical and electronic products. Please act according to your local rules and do not dispose of your old products with your normal household waste. Correct disposal of your old product helps to prevent potential negative consequences for the environment and human health.



Your product contains batteries covered by the European Directive 2006/66/EC, which cannot be disposed with normal household waste. Please inform yourself about the local rules on separate collection of batteries because correct disposal helps to prevent negative consequences for the environmental and human health.

#### Environmental information

All unnecessary packaging has been omitted. We have tried to make the packaging easy to separate into three materials: cardboard (box), polystyrene foam (buffer) and polyethylene (bags, protective foam sheet.) Your system consists of materials which can be recycled and reused if disassembled by a specialized company. Please observe the local regulations regarding the disposal of packaging materials, exhausted batteries and old equipment.

#### Copyright



The making of unauthorized copies of copy-protected material, including computer programs, files, broadcasts and sound recordings, may be an infringement of copyrights and constitute a criminal offence. This equipment should not be used for such purposes.

2013 © WOOX Innovations Limited. All rights reserved.  
Philips and the Philips' Shield Emblem are registered trademarks of Koninklijke Philips N.V. and are used by WOOX Innovations Limited under license from Koninklijke Philips N.V.  
Specifications are subject to change without notice. WOOX reserves the right to change products at any time without being obliged to adjust earlier supplies accordingly.

## Specifications

#### Amplifier

Output Power	2 x 2 W RMS
Frequency Response	125 - 16000 Hz
Signal to Noise Ratio	60 dBA

#### Disc

Laser Type	Semiconductor
Disc Diameter	12cm/8cm
Support Disc	CD-DA, CD-R, CD-RW

Frequency Response	125 -16000 Hz
Signal to Noise Ratio	60 dBA

#### Tuner

Tuning Range	FM: 87.5 - 108 MHz MW: 531-1602 KHz
Tuning Grid	FM: 50 KHz MW: 9 KHz
Sensitivity	FM: 20 uV
- 26dB S/N Ratio	MW: 5 mV/m
Total Harmonic Distortion	< 5%

#### Speakers

Speaker Impedance	8 ohm
Dimensions (W x H x D)	134 x 230 x 152 mm

#### General information

AC power	230 - 240V, 50Hz
Operation Power Consumption	15W
Standby Power Consumption	<1W
Dimensions - Main Unit (W x H x D)	148 x 233 x 216 mm
Weight	
- with speakers	3.65 kg
- without speakers	1.53 kg