



Philips
wireless portable speaker

Bluetooth® and NFC

Splash-proof
Built-in microphone for calls
16W, Rechargeable battery



BT6600R

Small size, incredible sound

Big sound 360° around

Put the speaker down any way you like. 360° audio provides incredible sound in any direction. Recharge the speaker easily with a docking station. Take it anywhere, indoors or out, rain or shine. Extra-long built-in battery even charges phones.

Designed to go places

- Built-in rechargeable Li-ion battery for playback anywhere
- Speaker also acts as power bank for smartphone charging
- Splash-proof design ideal for use in wet conditions
- Up to 12 hours music playtime

Advanced versatility

- One-Touch with NFC-enabled smartphones for Bluetooth pairing
- Built-in microphone for hands-free phone calls
- Wireless music streaming via Bluetooth
- Swap music instantly between 3 devices with MULTIPAIR
- Speaker charging dock included for extra convenience

Sound that blows you away

- Digital Sound Processing for lifelike sound without distortion
- 2 x 8W RMS total output power
- Two speaker drivers & passive radiators give immersive sound

PHILIPS

wireless portable speaker
Bluetooth® and NFC Splash-proof, Built-in microphone for calls, 16W, Rechargeable battery

BT6600R/12

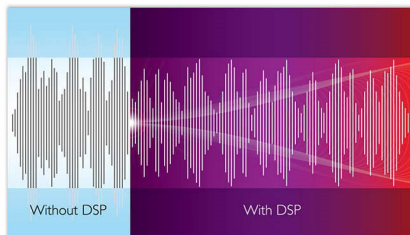
Highlights

Twin speaker drivers



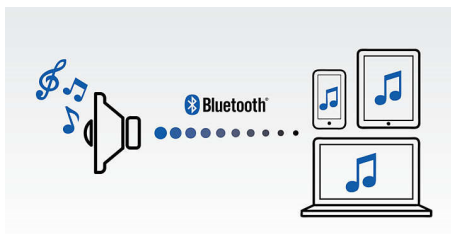
Twin 1.75" Neodymium speaker drivers deliver natural, clear and balanced sound while dual opposing passive radiators extend and boost bass. Front and back full-range speaker drivers create even 360-degree sound, offering the freedom to enjoy the same quality sound wherever the speaker is facing.

Digital Sound Processing



Advanced sound processing technology enhances the reproduction of your music so that each note resonates with crystal-clear accuracy, and each pause is sealed with pristine silence. Philips' proprietary Digital Sound Processing technology optimises the performance of compact speaker boxes, delivering sound that is clear, detailed and powerful without any distortion.

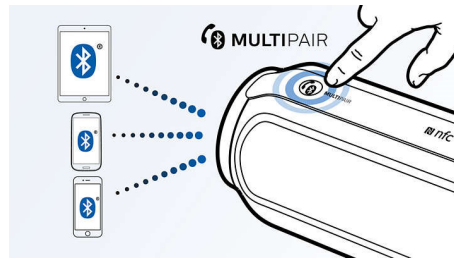
Wireless music streaming



Bluetooth is a short range wireless communication technology that is both robust

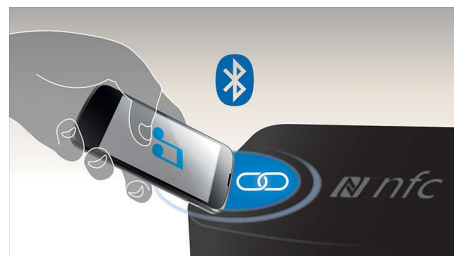
and energy-efficient. The technology allows easy wireless connection to iPod/iPhone/iPad or other Bluetooth devices, such as smartphones, tablets or even laptops. So you can enjoy your favourite music and sound from videos or games wirelessly.

Swap music between 3 devices



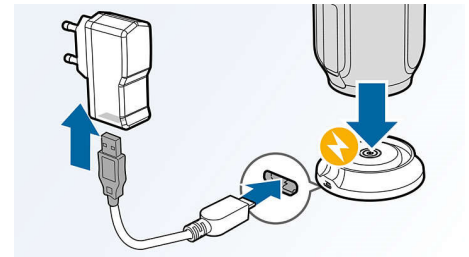
Pair with 3 smart devices simultaneously so you can stream music from whichever device you want, without the hassle of un-pairing and re-pairing. To play a song on a different device, pause the song on the original device first and then play the new song on a different device to take over. It's perfect for sharing music with friends, parties or just playing different songs stored on different devices. Let friends and family pair at the same time, so you can swap between each other's music easily.

NFC technology



Pair Bluetooth devices easily with one-touch NFC (Near Field Communications) technology. Just tap the NFC-enabled smartphone or tablet on the NFC area of a speaker to turn the speaker on, start Bluetooth pairing and begin streaming music.

Speaker charging dock



Recharge your speaker simply and conveniently by docking it in a compact charging dock that fits anywhere in your home. Recharging your speaker while enjoying music lets you listen for as long as you want. For music on the move, the speaker can also be charged via standard USB cable.

Up to 12 hours music playtime



Play your music loud any time, anywhere with a built-in rechargeable battery that lasts for up to 12 hours. Listen to all your music without the fuss of tangled power cords and the inconvenience of looking for electrical outlets, giving you total freedom of movement and a half-day of musical entertainment.

Splash-proof design

A lightly water-resistant design makes the speaker ideal for the shower, the kitchen, near the pool or on a rainy day, so you can enjoy your music anywhere you want.

2 x 8W RMS total output power

This speaker has 16W RMS total output power. RMS refers to Root Mean Square which is a typical measurement of audio power, or rather, the electrical power transferred from an audio amplifier to a loudspeaker, which is measured in watts. The amount of electrical power delivered to the loudspeaker and its sensitivity determines the sound power that is generated. The higher the wattage, the better the sound power emitted by the speaker.

Specifications

Sound

- Output power (RMS): 2 x 8W
- Sound System: Stereo
- Volume Control: rotary
- Speakers: 2 x 1.75"

Design and finishing

- Colour: Red

Connectivity

- Bluetooth profiles: A2DP, AVRCP, HFP
- Bluetooth range: Line of sight, 10 m or 30 ft
- Audio in (3.5 mm)
- NFC: Tap-to-pair Bluetooth; works with Android 4.0 or above, and Windows phone 8 or above

Convenience

- Water resistance: IPX4
- Built-in microphone: for speaker conference
- USB port: to charge mobile device (5V, 2.1A)

Compatibility

- Android tablets and smartphones: with Android 2.1 and Bluetooth 2.1 or above
- iPod touch: 3rd generation or later
- Works with: most Bluetooth smartphones, tablets,

music devices

- iPad: iPad 1, iPad 2, new iPad, iPad with Retina display, iPad Air, iPad Air 2, iPad mini 2, iPad mini 3, iPad mini
- iPhone: iPhone 3, iPhone 3GS, iPhone 4, iPhone 4S, iPhone 5, iPhone 5C, iPhone 5S, iPhone 6, iPhone 6 Plus
- other music devices: with Bluetooth 2.1 or above

Power

- Battery type: Lithium-ion (built-in)
- Power supply: 5V, 2A (USB adapter)
- Operating time on battery: 12 hour(s)

Accessories

- Included accessories: Speaker charging dock, USB adapter, USB cable for PC charging, Quick install guide, Warranty certificate, World Wide Warranty leaflet

Dimensions

- Weight incl. Packaging: 1.09 kg
- Product dimensions (WxDxH): 81 x 76 x 214 mm
- Packaging dimensions (WxDxH): 279 x 117 x 123 mm
- Product weight: 0.7 kg



Issue date 2024-03-24

Version: 2.0.7

EAN: 48 95185 61345 1

© 2024 Koninklijke Philips N.V.
All Rights reserved.

Specifications are subject to change without notice.
Trademarks are the property of Koninklijke Philips N.V.
or their respective owners.

www.philips.com