

# PHILIPS

## Headphones

8.6-mm drivers/closed-back

In-ear

SHE3700WT



## Big beats, pumping bass

### Compact design with vacuum metallised protection

Ultra small, big bass Philips Vibes in-ear headphones feature oval tube inserts for comfort and vacuum metallised coating for sleek looks with extra protection.

#### **Always ready to go**

- Reinforced cable relief enhances durability and connectivity

#### **Revel in quality sound**

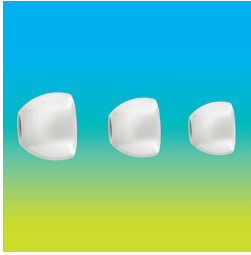
- Big bass and clear sound through efficient drivers
- A perfect in-ear seal blocks out external noise

#### **Listen for longer**

- Oval sound tube insert provides an ergonomic comfort fit
- 3 interchangeable rubber ear caps offer an optimal fit
- Shiny, colourful coating looks sleek and also protects

# Highlights

## 3 sizes of ear caps



Ear caps come in a choice of 3 sizes - small, medium and large - for a personalised and perfect fit

## Colourful shiny coating



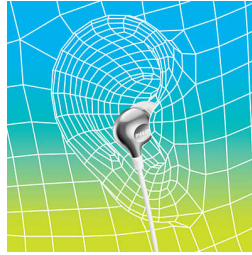
A high quality, glossy and colourful coating creates a sleek look while adding an extra protective surface.

## Efficient drivers



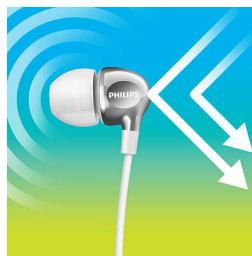
Philips Vibes in-ear headphones house efficient drivers inside a compact design. They fit perfectly while pumping out clear sound and booming bass.

## Oval sound tube



An oval sound tube insert provides ergonomic comfort to fit the true shape of the ear.

## Perfect in-ear fit



Ultra small earphones fit perfectly inside the ear, creating a seal that blocks out external noise.

## Reinforced cable relief

To extend the life of your headphones, a soft rubber relief between them and the cable protects the connection from damage through repeated bending.

## Sound

Acoustic system: Closed  
Diaphragm: PET  
Type: Dynamic  
Voice coil: copper  
Frequency response: 11 - 22,000 Hz  
Speaker diameter: 8.6 mm  
Sensitivity: 105 dB  
Maximum power input: 20 mW  
Impedance: 16 ohm

## Connectivity

Type of cable: copper  
Cable Connection: two-parallel, symmetric  
Finishing of connector: chrome-plated  
Cable length: 1.2 m  
Connector: 3.5 mm

## Outer Carton

Length: 37.5 cm  
Number of consumer packages: 24  
Width: 17.9 cm  
Gross weight: 1.127 kg  
Height: 13.9 cm  
GTIN: 1 69 25970 70909 2  
Net weight: 0.288 kg  
Tare weight: 0.839 kg

## Inner Carton

Length: 18.1 cm  
Number of consumer packages: 3  
Width: 8.1 cm  
Height: 6 cm  
Net weight: 0.036 kg  
Gross weight: 0.125 kg  
Tare weight: 0.089 kg  
GTIN: 2 69 25970 70909 9

## Packaging dimensions

Height: 17.3 cm  
Packaging type: Blister  
Type of shelf placement: Both  
Width: 5 cm  
Depth: 2.7 cm  
Number of products included: 1  
EAN: 69 25970 70909 5  
Gross weight: 0.026 kg  
Net weight: 0.012 kg  
Tare weight: 0.014 kg

## Accessories

Eartips: 3 sizes S, M, L

## Design

Colour: White

