

CMP100



EN User manual

RU РУКОВОДСТВО ПОЛЬЗОВАТЕЛЯ

PHILIPS

English

1. Important

Safety

- Read and understand all instructions before you use the apparatus. If damage is caused by failure to follow instructions, the warranty does not apply.
- This unit is designed for negative ground (earth) 12 V DC operation only.
- Use only the supplied mounting hardware for a safe and secure installation.
- Do not connect any active speakers (with built-in amplifier) to the speaker terminals of the unit. Doing so may damage the active speakers.
- To ensure safe driving, adjust the volume to a safe and comfortable level.
- To avoid short circuit, do not expose the apparatus to rain or water.
- Never expose the apparatus to direct sunlight, naked flames or heat.
- Clean the apparatus with soft, damp cloth. Never use substances such as alcohol, chemicals or household cleaners on the apparatus.

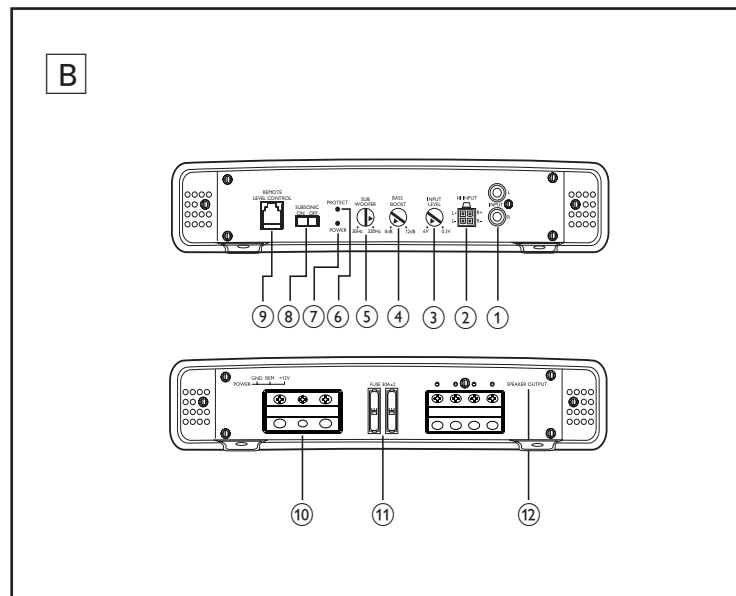
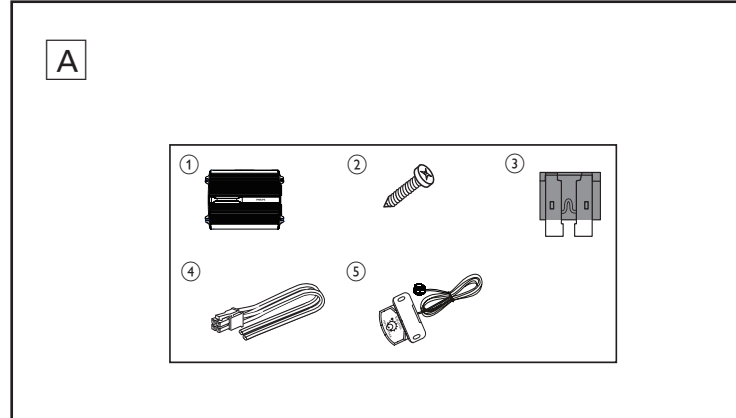
Notice

Environmental information

All unnecessary packaging has been omitted. We have tried to make the packaging easy to separate into three materials: cardboard (box), polystyrene foam (buffer) and polyethylene (bags, protective foam sheet.) Your system consists of materials which can be recycled and reused if disassembled by a specialized company. Please observe the local regulations regarding the disposal of packaging materials, exhausted batteries and old equipment.

Any changes or modifications made to this device that are not expressly approved by Philips Consumer Lifestyle may void the user's authority to operate the equipment.

2009 © Koninklijke Philips Electronics N.V. All rights reserved. Specifications are subject to change without notice. Trademarks are the property of Koninklijke Philips Electronics N.V. or their respective owners. Philips reserves the right to change products at any time without being obliged to adjust earlier supplies accordingly.



2. Your car power amplifier

Congratulations on your purchase, and welcome to Philips! To fully benefit from the support that Philips offers, register your product at www.philips.com/welcome.

Introduction

With the amplifier; you can enjoy high quality sound performance with powerful bass and beats.

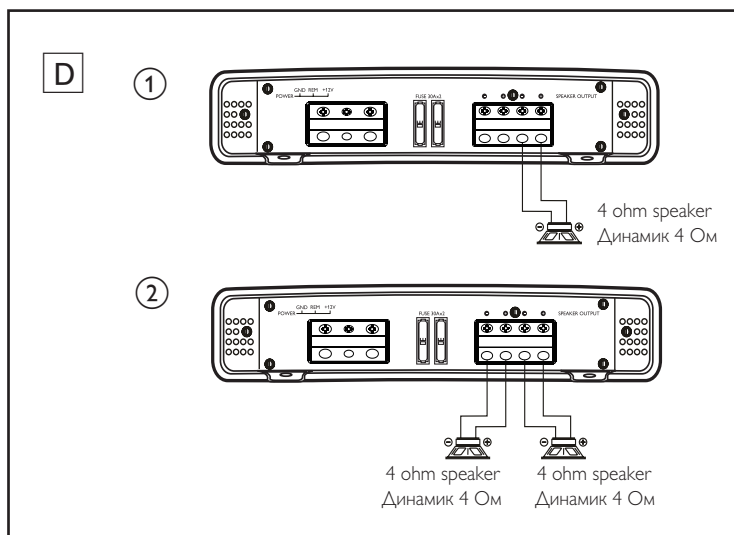
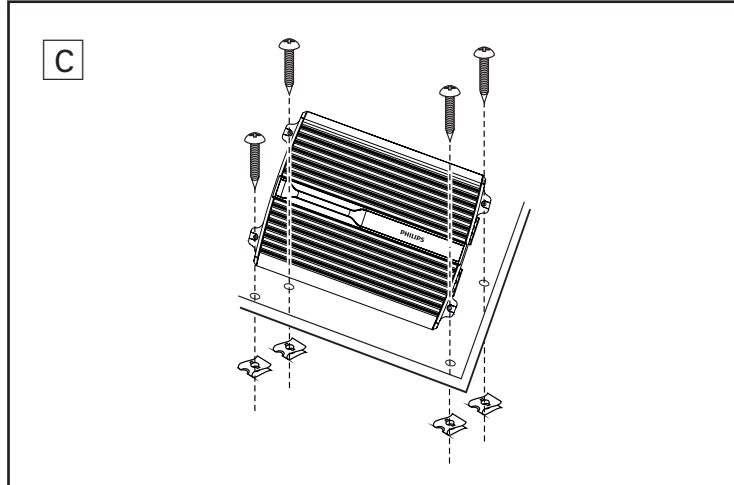
What's in the box

Check and identify the contents of your package:

- 1 Amplifier
- 2 Screw_4x25mm (x4)
- 3 Fuse (x2)
- 4 Hi input connector (x1)
- 5 Volume controller

Overview of the main unit

- 1 **INPUT L/R**
 - Connect car audio with RCA cable.
- 2 **HI INPUT**
 - Connect car audio with the supplied high input connector.
- 3 **INPUT LEVEL**
 - Adjust input level (0.3V to 6V).
- 4 **BASS BOOST**
 - Boost the frequencies at around 45Hz to a maximum of 12dB.
- 5 **SUBWOOFER**
 - Adjust low-pass-filter frequency for subwoofer.
- 6 **PROTECT**
 - Light in red when the PROTECTOR is activated.
- 7 **POWER**
 - Light in blue when power is turned on.



- 8 **SUBSONIC ON/OFF**
 - Switch on or off the subsonic filter.
- 9 **REMOTE LEVEL CONTROL**
 - External remote controller for volume level control.
- 10 **POWER (GND/REM/+12V)**
 - Connect +12V DC power cable, ground wire and remote wire.
- 11 **Fuse: 30Ax2**
- 12 **SPEAKER OUTPUT**
 - Connect to subwoofers.

3. Installation

Installation

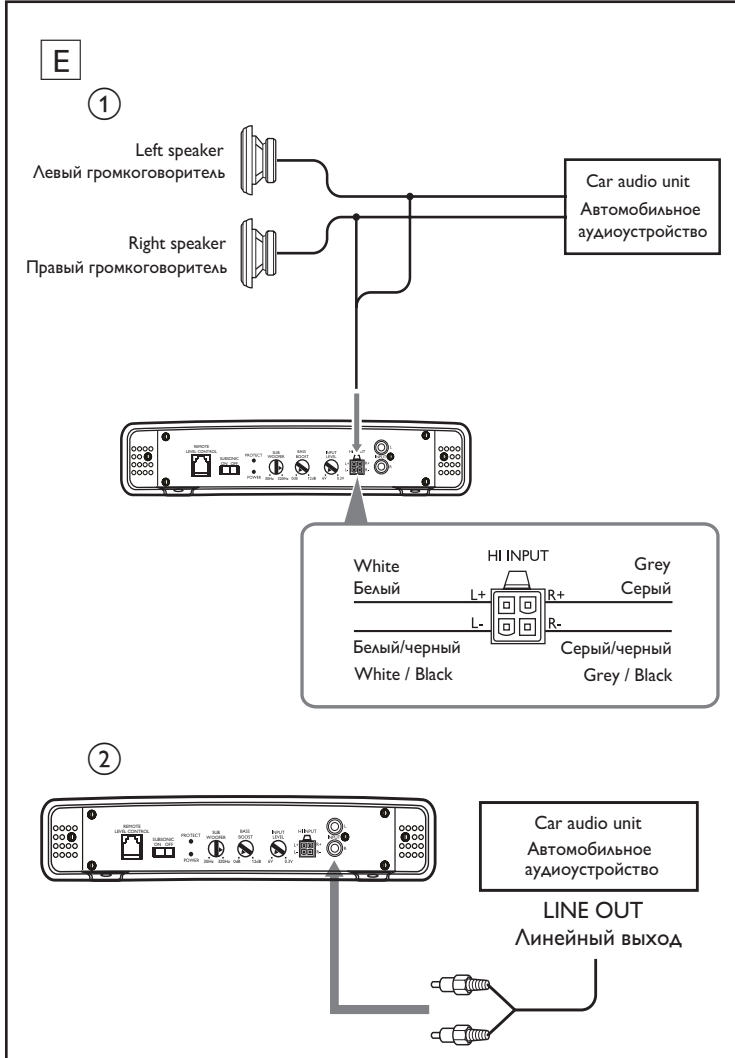
You can mount the amplifier either under a seat or on the rear tray.

- Note
 - To avoid interference, do not place the amplifier too close to the car audio or antenna.
 - The supplied mounting screws are 25mm long. Make sure that the mounting board is thicker than 25mm.

- 1 Place the unit on the location for installation.
- 2 Mark the positions of the four screw holes.
- 3 Drill the holes with driller of approximately 4mm in diameter.
- 4 Mount the unit with the supplied screws.

Connect speakers

- Note
 - Use speakers with an impedance of 2 to 8 ohm (4 to 8 ohm when used as a bridged amplifier).
 - Match the "left", "right", "+" and "-" terminals correctly. Revised polarity may degrade sound quality.



- Option 1: Mono bridged mode: connect 1 speaker 1
- Option 2: Stereo mode: connect 2 speakers 2

Connect car audio

Option 1: High level input connection 1
Connect the amplifier to your car audio with the supplied High level input connector.

Option 2: Line input connection 2
Connect the amplifier to the car audio with a RCA cable (not supplied).

Connect power

- 1 Make the power connection as illustrated below:
 - Connect the ground wire from the car to the **GND** socket.
 - Connect the remote wire from the car audio to the **REM** socket.
 - ✓ With this connection, you can turn on/off the amplifier with the car audio.
 - Connect the power wire from the car battery to the **+12V** socket.

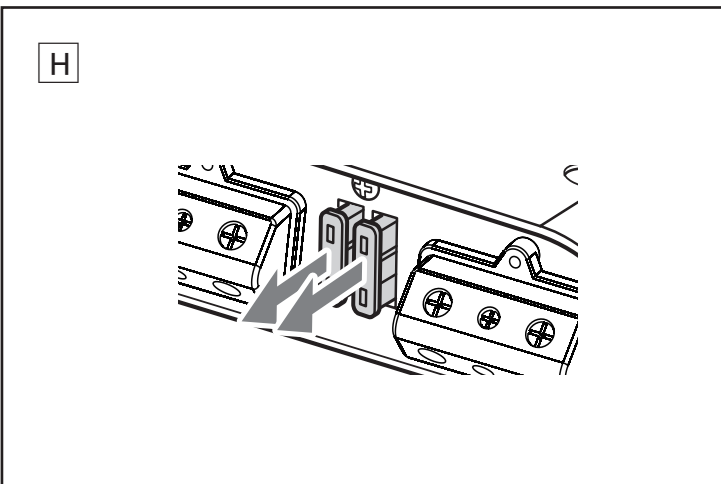
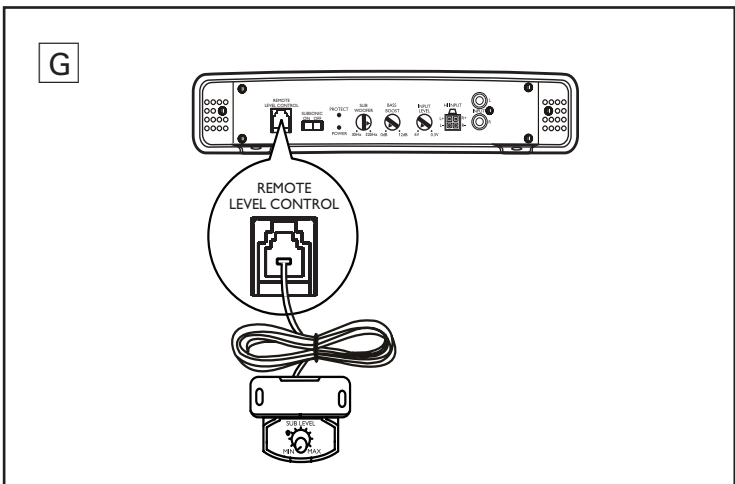
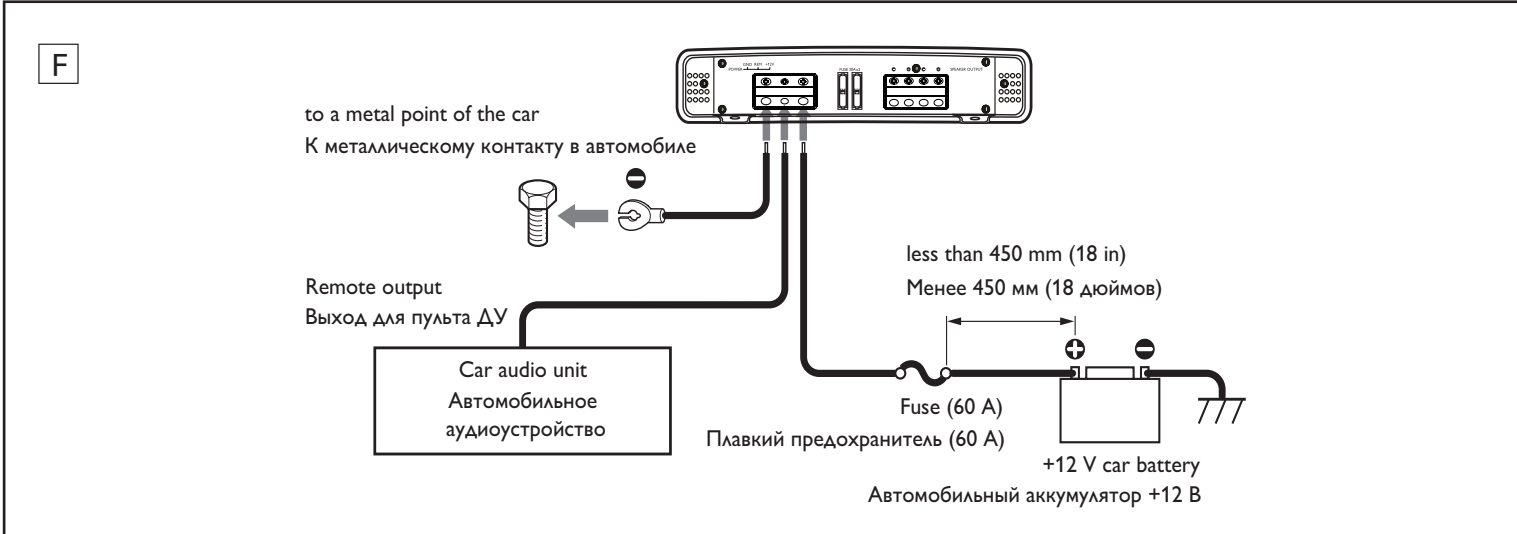
- Tip
 - If your car audio does not have remote output, connect the remote input terminal (REM) to the accessory power supply.

4. Use your power amplifier

Adjust input level

You can adjust the input voltage from 0.3V to 6V.

- 1 Rotate **INPUT LEVEL** to adjust input voltage.



Adjust bass boost

You can punch extra bass for 0 to 12dB.

- 1 Rotate **BASS BOOST** to punch for extra bass.

About the protector indicator

The amplifier has a built-in protection circuit to protect the transistors and speakers when:

- The unit is overheated. Or
- A DC current is generated. Or
- The battery voltage is over low or over high. Or
- The speaker terminals are short circuited.

When the PROTECT indicator lights up in red, the unit shuts down automatically. If this happens, please:

- 1 Take out the disc or tape and turn off the car audio.
- 2 Check the cause of the malfunction (see above).
- 3 If the amplifier has overheated, wait until the unit cools down before use.

Adjust subwoofer frequency

Rotate Subwoofer to adjust low-pass-filter frequency for subwoofer:

- 1 Rotate **SUBWOOFER** to adjust frequency: 30Hz to 320Hz.

Turn subsonic filter on or off

- 1 Slide **SUBSONIC** to ON position.
 - The subsonic is turned on, frequency below 15Hz is filtered.
 - To turn off the subsonic filter, slide **SUBSONIC ON/OFF** to OFF position.

Adjust volume

You can adjust volume at the front seat via the supplied volume control.

- 1 Connect the supplied volume controller to the **REMOTE LEVEL CONTROL** socket.
- 2 Rotate the volume knob to adjust volume.

Replace fuse

If there is no power, the fuse may be damaged and need to be replaced.

- 1 Pull out the damaged fuse.
- 2 Replace the fuse with the supplied fuses or to buy two fuses that matches the voltage of the damaged fuse (30Ax2).

If the fuse gets damaged immediately after it has been replaced, there may be an internal malfunction. In such case, consult your Philips dealer.

5. Product information

- Note
 - Product information is subject to change without prior notice.

Power Output (RMS)	
- 4 ohm	250Wx1
- 2 ohm	400Wx1
Total harmonic distortion	0.08%
Signal to noise ratio	105dB
Frequency response	5-320Hz
Input sensitivity	300mV-6V
Input impedance	22k ohm
Fuse rating	30Ax2
Dimensions (DxWxH)	54.4x336.5x240.2mm

