

# Always there to help you

Register your product and get support at  
[www.philips.com/welcome](http://www.philips.com/welcome)



SPA4270BT



# User Manual

**PHILIPS**



# Contents

<b>1</b>	<b>Important</b>	<b>2</b>
	Safety	2
	Notice	2
<b>2</b>	<b>Your multimedia speaker</b>	<b>3</b>
	Get started	4
<b>3</b>	<b>Play</b>	<b>5</b>
	Play through Bluetooth	5
	Play through the audio cable	7
	Control Play	8
<b>4</b>	<b>Product information</b>	<b>9</b>
<b>5</b>	<b>Troubleshooting</b>	<b>10</b>

# 1 Important

---

## Safety

---

### Important safety instructions

- Read and follow all these instructions.
- The product shall not be exposed to dripping or splashing and no objects filled with liquids, such as vases, shall be placed on the product.
- To completely disconnect the power input, the mains plug of the product shall be disconnected from the mains.
- The mains plug of the product should not be obstructed or should be easily accessed during intended use.
- Keep this product away from direct sunlight, naked flames or other heat sources.
- Unplug the product from the power outlet during lightening storms or when unused for long periods of time.
- When you disconnect the power cord, always pull the plug instead of the cable.
- Only use attachments/accessories specified by the manufacturer.
- Where the mains plug or an appliance coupler is used as the disconnect device, the disconnect device shall remain readily operable.



### Warning

- Never remove the casing of this unit.
- Never lubricate any part of this unit.
- Place this unit on a flat, hard and stable surface.
- Never place this unit on other electrical equipment.
- Keep this unit away from water, moisture and liquid-filled objects.
- Keep this unit away from direct sunlight, naked flames or heat.

---

## Notice

Any changes or modifications made to this device that are not expressly approved by Philips Consumer Lifestyle may void the user's authority to operate the equipment.

---

## Disposal of your old product and batteries

Your product is designed and manufactured with high quality materials and components, which can be recycled and reused.

Never dispose of your product with other household waste. Please inform yourself about the local rules on the separate collection of electrical and electronic products and batteries. The correct disposal of these products helps prevent potentially negative consequences on the environment and human health.

Your product contains batteries, which cannot be disposed of with normal household waste.

Please inform yourself about the local rules on separate collection of batteries. The correct disposal of batteries helps prevent potentially negative consequences on the environment and human health.

Please visit [www.recycle.philips.com](http://www.recycle.philips.com) for additional information on a recycling center in your area.

### Environmental information

All unnecessary packaging has been omitted. We have tried to make the packaging easy to separate into three materials: cardboard (box), polystyrene foam (buffer) and polyethylene (bags, protective foam sheet.)

Your system consists of materials which can be recycled and reused if disassembled by a specialized company. Please observe the local regulations regarding the disposal of packaging materials, exhausted batteries and old equipment.



#### Note

- The type plate is located on the back panel of the right speaker.

## 2 Your multimedia speaker

Congratulations on your purchase and welcome to Philips!

To fully benefit from the support that Philips offers, register your product at [www.philips.com/welcome](http://www.philips.com/welcome).

# Get started



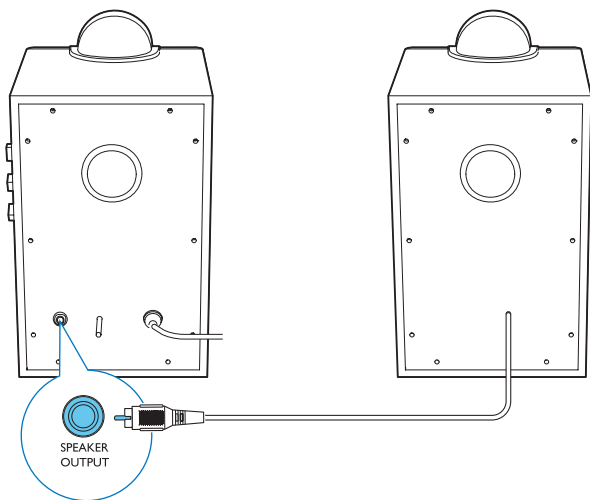
## Caution

- Use of controls or adjustments or performance of procedures other than herein may result in hazardous radiation exposure or other unsafe operation.

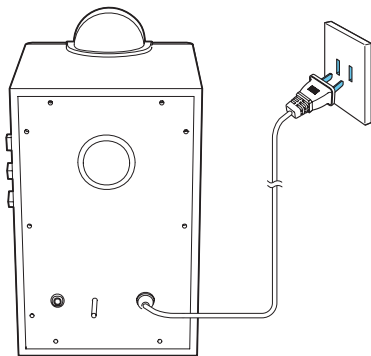
Always follow the instructions in this chapter in sequence.

## Installation

- 1 Insert the RCA cable from the left speaker to the **SPEAKER OUT** socket on the right speaker.



- 2 Connect the AC plug to AC power socket.



## 3 Play

### Play through Bluetooth

The multimedia speaker uses Bluetooth wireless technology to stream music from your portable device to the system.

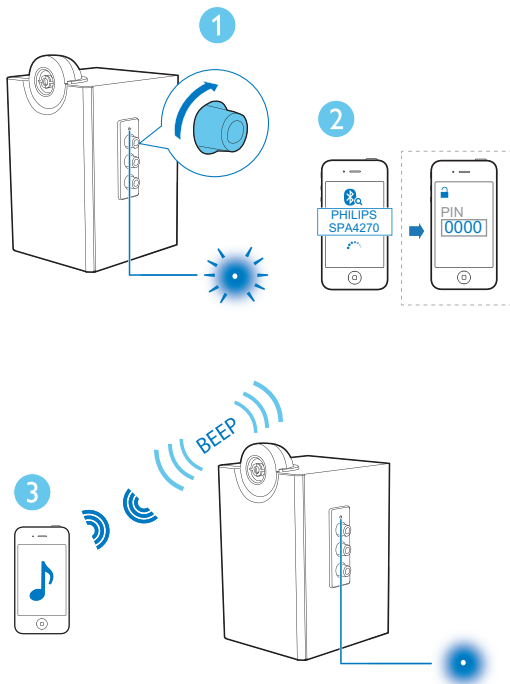


#### Note

- Your Bluetooth device should be with Bluetooth software of version 2.1 or above.
- Before you connect a Bluetooth device to this multimedia speaker; familiarize yourself with the Bluetooth capabilities of the device.
- Keep this multimedia speaker away from other electronic devices that may cause interference.
- Make sure that the multimedia speaker is installed properly before using.

- 1 On the side panel of the right speaker; rotate the **VOL** knob clockwise.
- ↳ Bluetooth will be activated automatically.
  - ↳ The LED indicator on the multimedia speaker blinks.
  - To switch off the speaker; rotate the **VOL** knob counter-clockwise, until you hear one click.

- 2** On your Bluetooth device, activate Bluetooth and search for **Philips SPA4270**.
- For the first-time connection, select **Philips SPA4270** to start pairing.
  - ↳ For some devices, you may need to input "0000" as pairing password.
  - ↳ If connection is successful, you will hear double beep confirmation.
  - ↳ The LED indicator lights in blue.
- 3** Play audio with the media player of your device.
- ↳ The audio comes out through the multimedia speaker.
  - ↳ Next time you switch on **Philips SPA4270**, the speaker connects to the last paired device automatically.
  - ↳ To connect **Philips SPA4270** to another Bluetooth device, switch off Bluetooth on current Bluetooth device.





## Tip

- The effective operation range between the multimedia speaker and the paired device is approximately 10 meters (30 feet).
- Any obstacle between the speaker and the device can reduce the operational range.

---

## Play through the audio cable



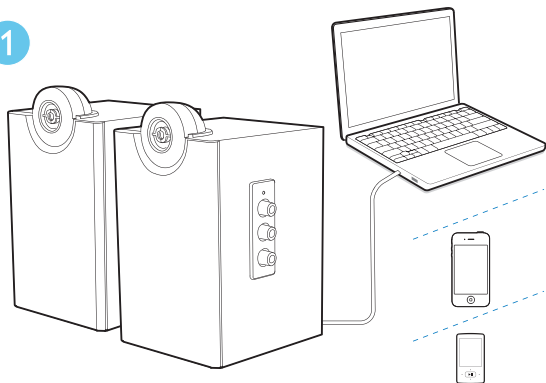
## Note

- Make sure that the multimedia speaker is installed properly before using.

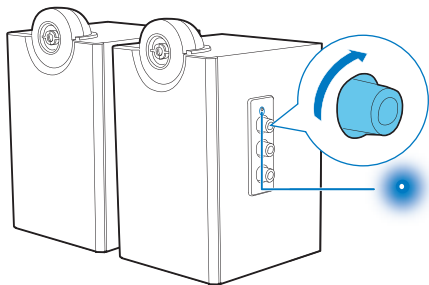
You can also play music from an external audio device, such as a computer; mobile phone, MP3 player, etc.

- 1 Connect the 3.5mm audio in cable (fixed to the **AUX-IN** socket on the right speaker) to the headphone socket on the external device.
  - ↳ **SPA4270BT** exits Bluetooth pairing mode when the audio cable is connected to an external audio device.
- 2 On the side panel of the right speaker; rotate the **VOL** knob clockwise.
  - ↳ The LED indicator on the multimedia speaker turns on stably.
- 3 Play music from the device.
  - After use, rotate the **VOL** knob counter-clockwise to switch off the multimedia speaker and unplug.

1



2



## Control Play

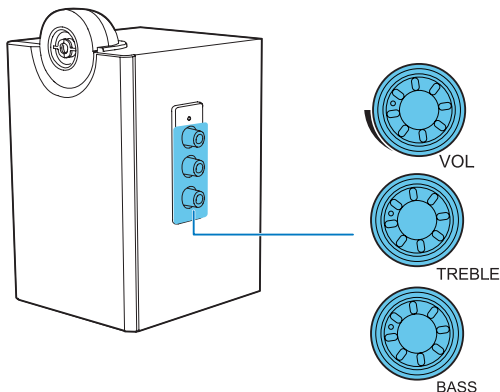
To increase or decrease volume,

- When the multimedia speaker is turned on, rotate the **VOL** knob on the side panel of the right speaker to adjust the volume.

To adjust bass or treble level,

- Rotate the **BASS** knob on the back panel of the right speaker to adjust the bass.

- Rotate the **TREBLE** knob on the back panel of the right speaker to adjust the treble.



## 4 Product information

### AC power

Input	220V ~ 50Hz 150mA
Operation power consumption	15W
Standby power consumption	<1W
Dimensions (W x H x D)	143 x 220 x 150 mm

### System Requirements:

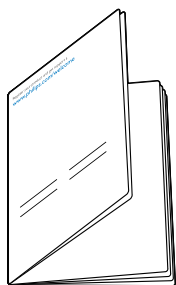
PC	Mac
Windows® 98SE, Windows® ME, Windows® 2000, Windows® XP, or Windows® Vista™, Windows 7	Mac OS9/OS® X, or later

## 5 Troubleshooting

To keep the warranty valid, never try to repair the system yourself.

If you encounter problems when using the product, check the following points before requesting service. If the problem remains unsolved, register your product and get support at [www.philips.com/support](http://www.philips.com/support).

- Make sure that the speakers are correctly installed.
- Make sure the LED lights up.



To download the full user manual, visit [www.philips.com/support](http://www.philips.com/support).



Specifications are subject to change without notice  
© 2013 Koninklijke Philips Electronics N.V.  
All rights reserved.

SPA4270BT\_93\_UM\_V1.1

