

Register your product and get support at
www.philips.com/welcome

AS351



User manual

PHILIPS

Contents

1 Important 2

2 Your Docking Speaker for Android™ 3

- Introduction 3
- What's in the box 3
- Overview of the main unit 4

3 Get started 5

- Power supply 5
 - Option 1: AC power 5
 - Option 2: Battery power 5
- Turn on 5
 - Switch to standby mode 5

4 Play and charge 6

- Compatible with Android™ 6
- Play audio through manual Bluetooth connection 6
- Play audio through auto Bluetooth connection with Philips DockStudio 7
 - Install DockStudio app onto Android-powered device 8
 - Activate Bluetooth with DockStudio app 10
- Dock and charge Android-powered phone 13
 - Dock Android-powered device 13
 - Use dock extension 13
 - Charge Android-powered phone 14
- Play audio with Philips Songbird 14
 - Install Songbird on Android-powered device 14
 - Install Songbird on PC 16
 - Sync with PC through Philips Songbird 16

5 Other features 17

- Use more features with DockStudio 17
 - Listen to Internet radio 17
 - Set sleep timer 17
 - Set alarm timer 18

- Charge your device through the USB socket 19
- Play audio from an external device 20

6 Product information 21

- Specifications 21

7 Troubleshooting 22

- About Bluetooth device 22

8 Notice 23

- Bluetooth Statement 23

1 Important

- Read these instructions.
- Keep these instructions.
- Heed all warnings.
- Follow all instructions.
- Do not use this apparatus near water.
- Clean only with dry cloth.
- Install in accordance with the manufacturer's instructions.
- Do not install near any heat sources such as radiators, heat registers, stoves, or other apparatus (including amplifiers) that produce heat.
- Protect the power cord from being walked on or pinched, particularly at plugs, convenience receptacles, and the point where they exit from the apparatus.
- Only use attachments/accessories specified by the manufacturer.
- Unplug this apparatus during lightning storms or when unused for long periods of time.
- Refer all servicing to qualified service personnel. Servicing is required when the apparatus has been damaged in any way, such as power-supply cord or plug is damaged, liquid has been spilled or objects have fallen into the apparatus, the apparatus has been exposed to rain or moisture, does not operate normally, or has been dropped.
- Battery usage CAUTION – To prevent battery leakage which may result in bodily injury, property damage, or damage to the unit:
 - Install all batteries correctly, + and - as marked on the unit.
 - Do not mix batteries (old and new or carbon and alkaline, etc.).
 - Remove batteries when the unit is not used for a long time.
- Apparatus shall not be exposed to dripping or splashing.

- Do not place any sources of danger on the apparatus (e.g. liquid filled objects, lighted candles).
- Where the plug of the Direct Plugin Adapter is used as the disconnect device, the disconnect device shall remain readily operable.



Warning

- Never remove the casing of this apparatus.
- Never lubricate any part of this apparatus.
- Never place this apparatus on other electrical equipment.

2 Your Docking Speaker for Android™

Congratulations on your purchase, and welcome to Philips! To fully benefit from the support that Philips offers, register your product at www.philips.com/welcome.

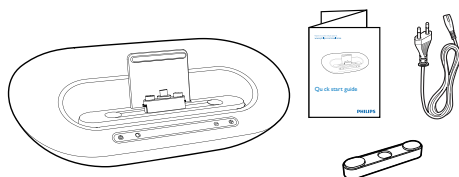
Introduction

With this docking speaker, you can:

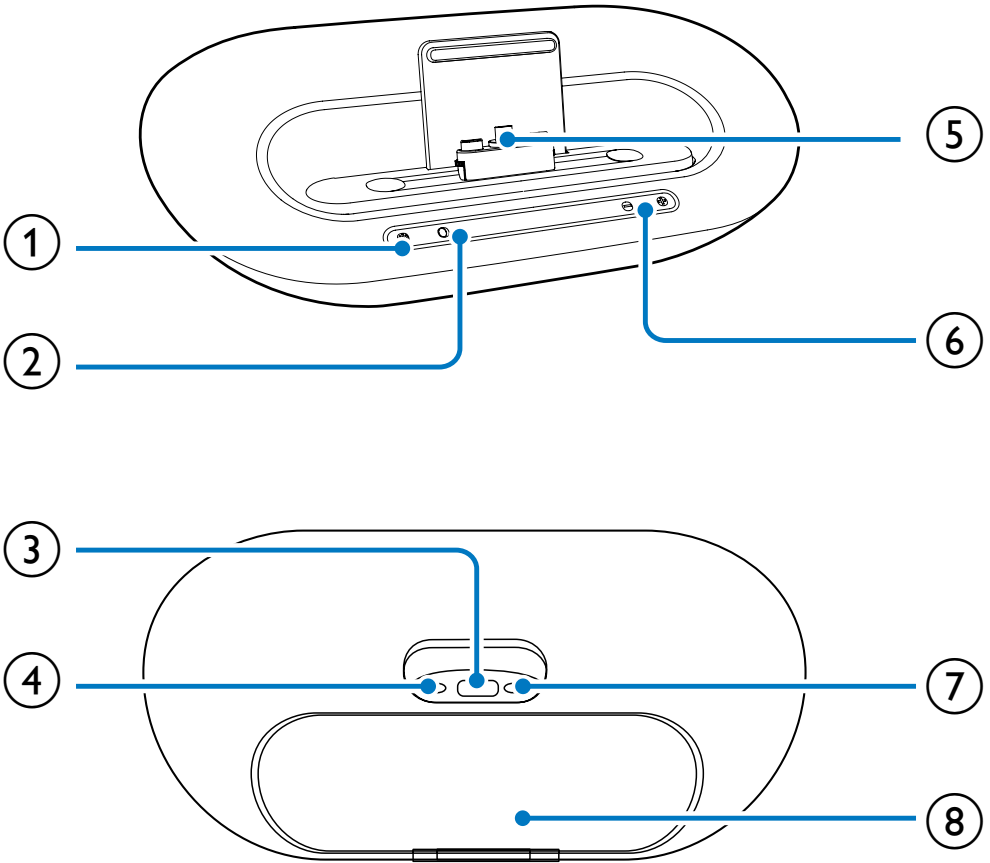
- enjoy audio from your Bluetooth-enabled portable device or an external device;
- charge your portable device; and
- experience various features brought by Philips **Philips DockStudio** and **Philips Songbird** app.




What's in the box

Check and identify the contents of your package:



Overview of the main unit



- ① 
 - Activate or deactivate Bluetooth function.
- ② 
 - Bluetooth indicator.
- ③ 
 - Charge your phone through USB cable.
- ④ **AUX IN**
 - Connect an external audio device.
- ⑤ **Dock for Android-powered device**

- ⑥ +/-
 - Adjust volume.
- ⑦ **Power supply socket**
- ⑧ **Battery compartment**

3 Get started

Always follow the instructions in this chapter in sequence.

Power supply

Either AC power or batteries can be used as power supply of this speaker.

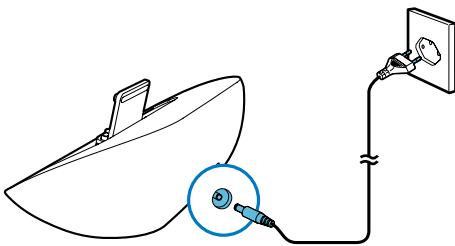
Option 1: AC power

! Caution

- Risk of product damage! Ensure that the power voltage corresponds to the voltage printed on the back or underside of the unit.
- Risk of electric shock! When you unplug the AC adaptor, always pull the plug from the socket. Never pull the cord.

Connect the AC power adaptor to

- the power socket at the back of the speaker.
- the wall outlet.

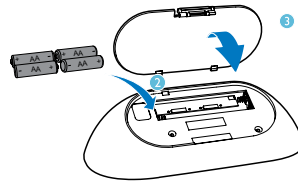
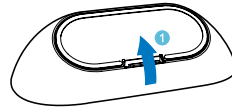


Option 2: Battery power

! Caution

- Risk of explosion! Keep batteries away from heat, sunshine, or fire. Never discard batteries in fire.

- 1 Open the battery compartment.
- 2 Insert 4 AA batteries with correct polarity (+/-) as indicated.
- 3 Close the battery compartment.



☰ Note

- Batteries contain chemical substances, so they should be disposed of properly.

Turn on

Press \odot .

- ↳ The Bluetooth indicator \star begins to blink.

Switch to standby mode

Press \odot again to switch the docking speaker to standby mode.

- ↳ The Bluetooth indicator \star turns off.

4 Play and charge

With this docking speaker, you can enjoy audio in two ways:

- through manual Bluetooth connection;
- through automatic Bluetooth connection with **Philips DockStudio** app.

Compatible with Android™

To make full use of your docking speaker, your Android-powered device should satisfy the following requirements:

- With Android operation system (Version 2.1 or above);
- With Bluetooth software (Version 2.1 or above); and
- With a micro USB connector.

For other devices with micro USB connector and Bluetooth function, you can still use the docking speaker to do the following:

- Charge your device through the USB connector or USB socket;
- Enjoy audio through Bluetooth.

Tip



- For more details, go to www.philips.com/flexidock.

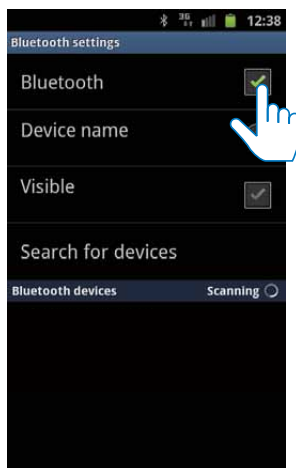
Play audio through manual Bluetooth connection

The docking speaker uses Bluetooth wireless technology to stream music from your portable device to the system.

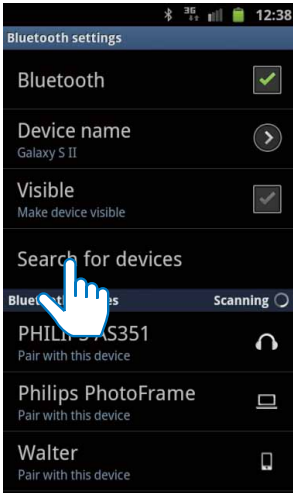
Note

- Before you connect a Bluetooth device to this docking speaker, familiarize yourself with the Bluetooth capabilities of the device.
- Keep this docking speaker away from other electronic devices that may cause interference.

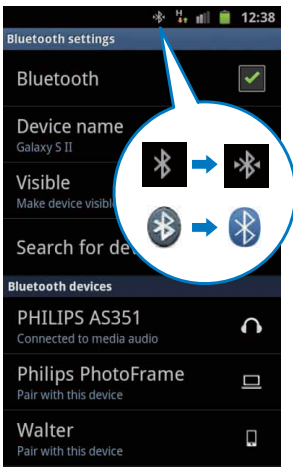
- 1 On your docking speaker, press  to activate Bluetooth.
↳ The Bluetooth indicator  blinks on the display panel.
- 2 Turn on Bluetooth function of your portable device.
 - Different devices may have different way to activate Bluetooth.



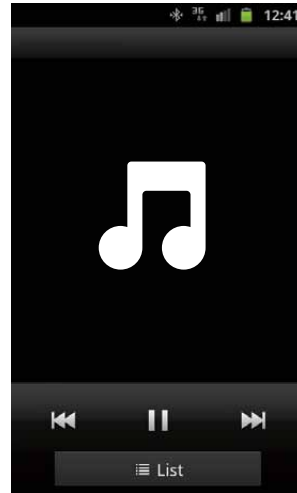
- 3 Scan Bluetooth devices that can pair with your portable device.



- 4 When [PHILIPS AS351] is displayed on your device, select it to start connection.
- ↳ If connection is successful, you will hear double beep confirmation and find a different Bluetooth icon on the top of the screen.



- 5 Play audio with the media player of your portable device.



- ↳ The audio comes out through the docking speaker.

Tip

- The effective operation range between the docking speaker and the paired device is approximately 10 meters (30 feet).
- Any obstacle between the speaker and the device can reduce the operational range.

Play audio through auto Bluetooth connection with Philips DockStudio

Philips DockStudio app brings a suite of new features to your docking speaker; including automatic Bluetooth connection, Songbird music player; Internet radio and a multi-function alarm clock. To enjoy more features, you are recommended to download and install the free app.

Install DockStudio app onto Android-powered device

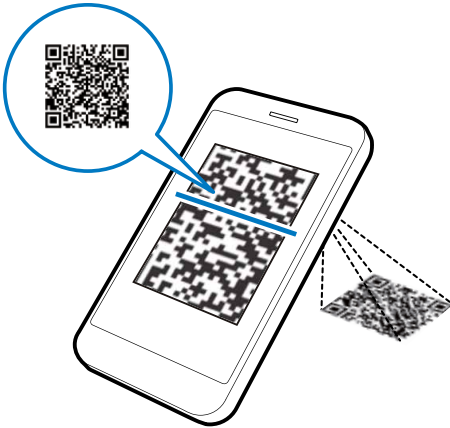
You have two ways to install **Philips DockStudio** on your Android-powered device.

Install DockStudio app through QR code

Note

- Make sure that your Android-powered device is connected to the internet.
- Make sure that your device has a barcode scanner such as "QR Droid". If not, download one from the Android market.

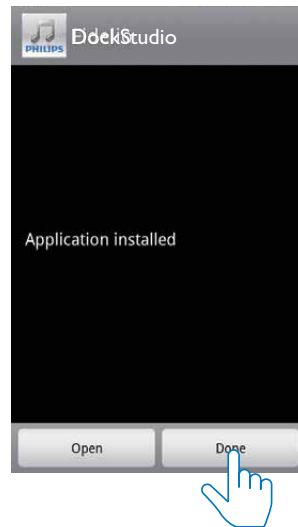
- 1 Use the barcode scanner to scan the QR code on the package or Quick Start Guide.



- 2 Follow the on-screen instructions to install **Philips DockStudio** app.



- 3 When installation is complete, tap **[Done]** (done).



- ↳ The **DockStudio** icon appears on your portable device.



Install DockStudio app through Android Market

You can also search **Philips DockStudio** from Android Market directly, and then install the app.

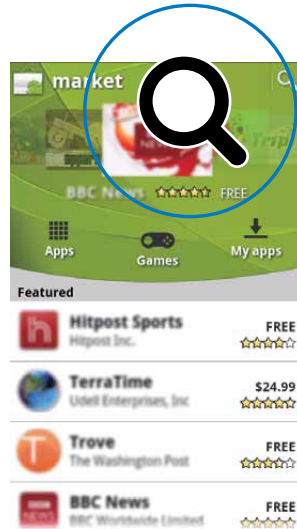
Note

- Make sure that your Android-powered device is connected to the internet.
- Make sure that Android Market is available on your Android-powered device.

- 1 Tap the "Android Market" icon on your device.



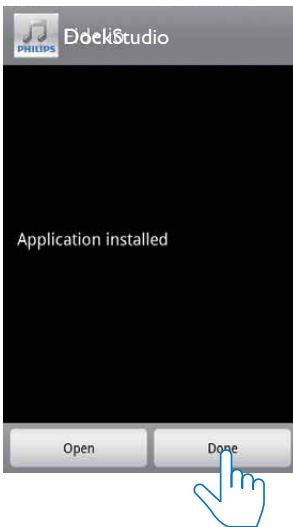
- 2 Tap the search icon on the screen.



- 3 In the search bar, type in "Philips DockStudio" to search the app.
- 4 From the search result list, find and tap **Philips DockStudio** to start downloading.
- 5 Follow the on-screen instructions to install the **DockStudio** app.



- 6 When installation is complete, tap **[Done]** (done).



Activate Bluetooth with DockStudio app

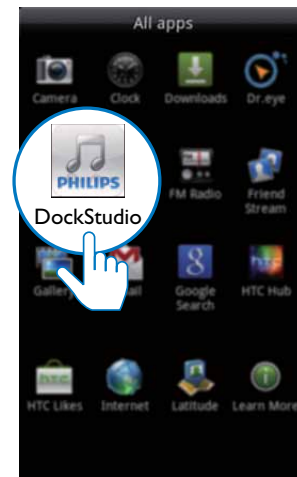
Philips DockStudio app helps to connect your Android-powered device and docking speaker through Bluetooth automatically.

Note

- Make sure that your Android-powered device is connected to the Internet.

First-time launch

- 1 On your docking speaker, press **⓪** to activate Bluetooth.
↳ **⓪** blinks on the display panel.
- 2 On the home screen of your device, tap the **DockStudio** icon to launch the app.

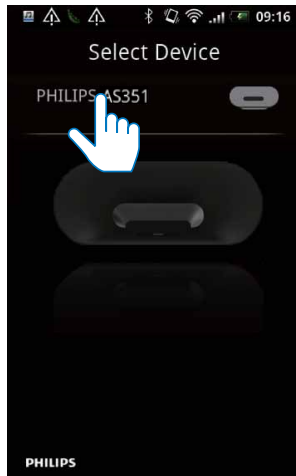


- ↳ A prompt message asking you to download **Songbird** appears.

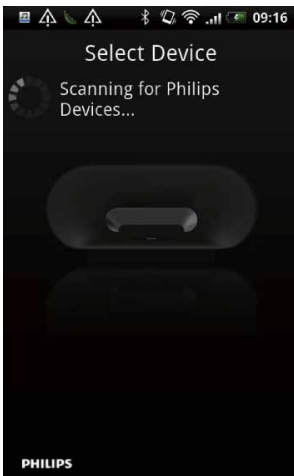
- 3 Tap **[Cancel]** (cancel).



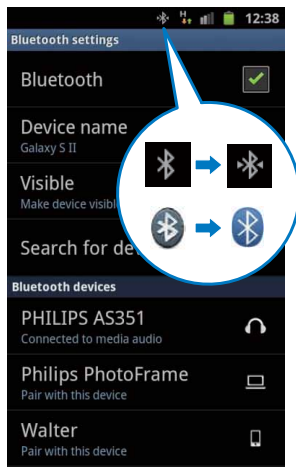
↳ The device starts to scan Philips devices that can be paired automatically.



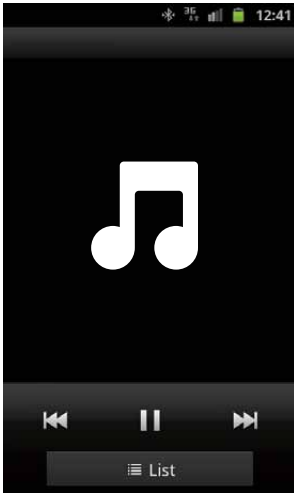
↳ After Bluetooth connection, a different Bluetooth icon can be found on the top of the screen.



4 When **[PHILIPS AS351]** is displayed on your device, select it to start connection.
 ↳ It may take a few seconds to complete the connection.



5 Play audio with the media player of your portable device.



↳ The audio comes out through the docking speaker.

Next-time launch

Next time you launch the **DockStudio** app, connect to the docking speaker through Bluetooth as below.

- 1 Activate the Bluetooth function of your docking speaker.
- 2 Launch **Philips DockStudio** to access its menu.



- 3 Tap **[Speaker Connection]** (Speaker Connection) to activate automatic Bluetooth connection.



↳ It may take a few seconds to complete the connection.

- 4 Play audio on your portable device.

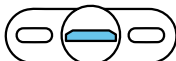
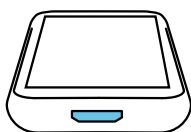
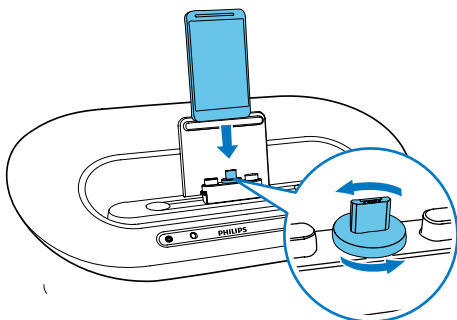
↳ The audio comes out through the docking speaker.

Dock and charge Android-powered phone

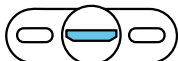
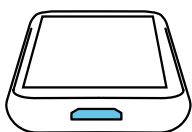
Dock Android-powered device

To charge your Android-powered phone, you need to dock it in the docking speaker first.

- 1 Check the orientation of the micro USB connector on your Android-powered phone. If your USB connector has a cover, flip it outwards.
- 2 If necessary, rotate the USB connector on the docking speaker; and then place your Android-powered phone onto the dock.

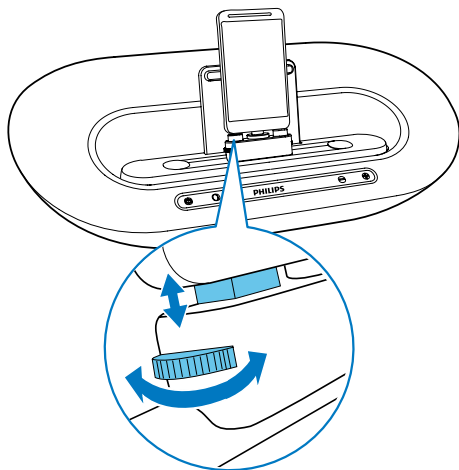


PHILIPS

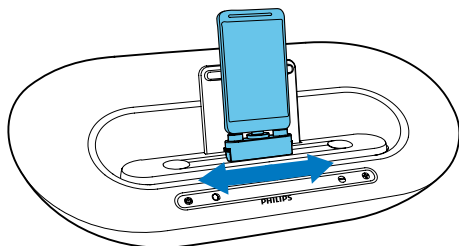


PHILIPS

- 3 Adjust the bumpers on both sides of the connector to stabilize the phone.



- 4 Slide the connector to place your phone in the middle of the docking speaker.



Tip

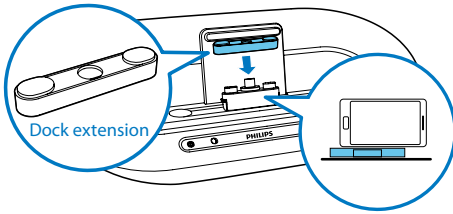
- If the micro USB connector is located at the top, and you are using Android system of version 2.3 or above, screen auto-rotation is available.

Use dock extension

If the USB connector on your phone is close to the edge, the supplied dock extension can balance the docked phone, as illustrated.

- 1 Adjust the slide knobs to make both bumpers at the lowest position.
- 2 Place the dock extension onto the dock.

3 Dock your phone.



Charge Android-powered phone

When the docking speaker is connected to power, the docked phone starts charging automatically.

Tip

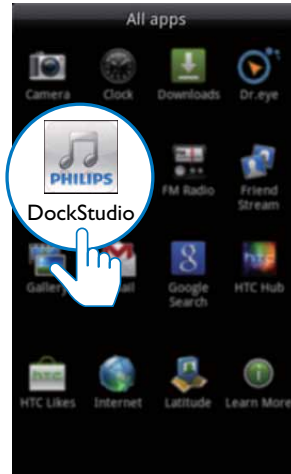
- This function is also available for non Android-powered device that has a micro USB connector.

Play audio with Philips Songbird

Philips Songbird is a simple, easy-to-use PC program and Android app. It lets you discover, play and sync your media from PC to your Android-powered devices seamlessly.

Install Songbird on Android-powered device

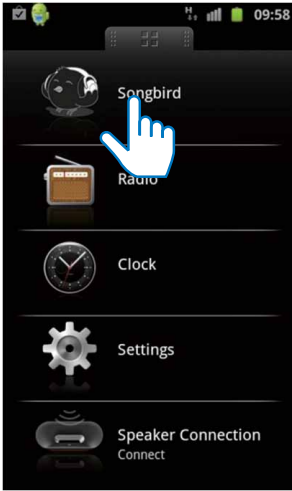
- 1 Tap the **DockStudio** icon on your Android-powered device.



↳ The **DockStudio** menu is displayed.



- 2 Tap [Songbird].

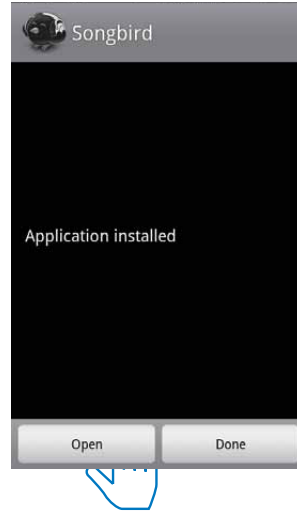


↳ You are requested to download **Songbird**.

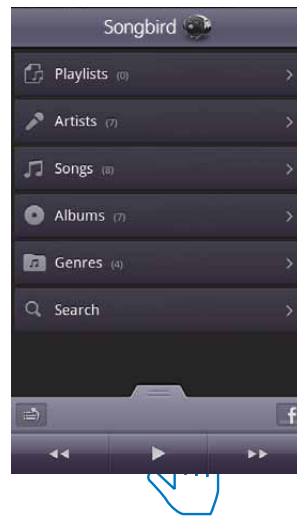
- 3 Follow the on-screen instructions to download the app.

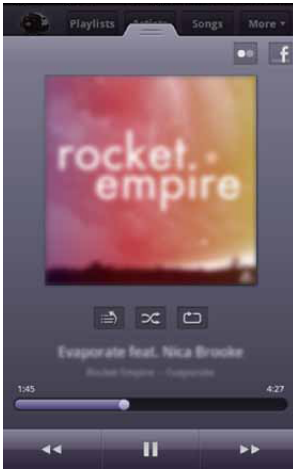


- 4 After installation, tap **[Open]** (Open) to access **Songbird** menu.



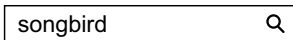
- 5 Select a track, and then tap ▶ to play music.





Install Songbird on PC

- 1 Go to www.philips.com/songbird.
- 2 Search **Songbird**.



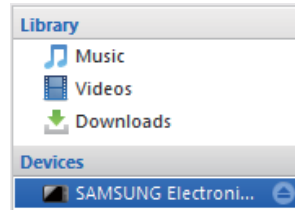
- 3 Download the latest **Songbird** application.
- 4 Follow on-screen instructions to install **Philips Songbird** on your PC.

Sync with PC through Philips Songbird

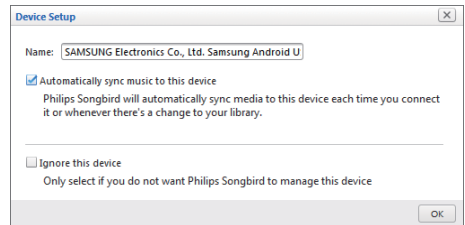
Note

- Make sure that you have turned on the USB storage.

- 1 On your PC, launch **Philips Songbird**.
- 2 Connect your Android-powered device to PC with a USB cable. Wait until the device is recognized by the **Songbird**.
 - ↳ On **Philips Songbird**, the device is displayed when it is recognized by the PC.



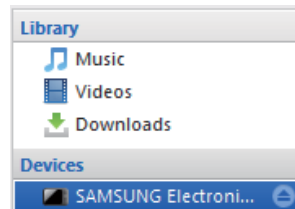
- ↳ If it is the first time you connect the device to **Philips Songbird**, a pop-up screen appears. Select auto sync as prompted.



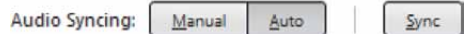
- ↳ The device synchronizes with **Philips Songbird** automatically.

If you didn't select auto sync, you can sync with **Songbird** manually.

- 1 Select the device under **Devices**.



- 2 Select **Manual** or **Auto**.



- 3 Click **Sync**.
 - ↳ If you have selected auto sync, auto sync starts automatically when you connect the device to the PC.

5 Other features

Use more features with DockStudio

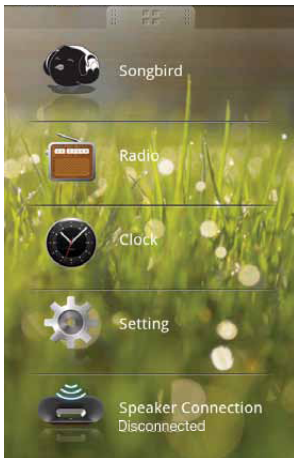
With **Philips DockStudio**, you can also listen to Internet radio, set alarm timer and sleep timer.

Note

- Make sure that your portable device is connected to the Internet.

Listen to Internet radio

- 1 Connect your Android-powered device and the docking system through Bluetooth.
- 2 Open **Philips DockStudio** to go to the main menu.
- 3 Tap **[Radio]** (Radio) on the screen.



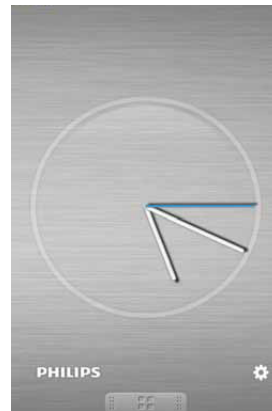
- 4 Search a radio station in the search bar.




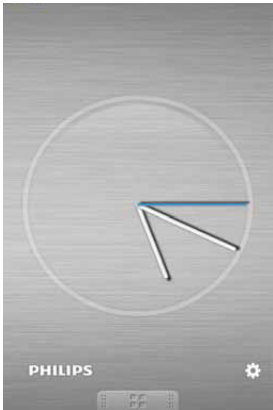
- 5 Select a radio station from the search result list.
↳ The radio station begins to broadcast.

Set sleep timer

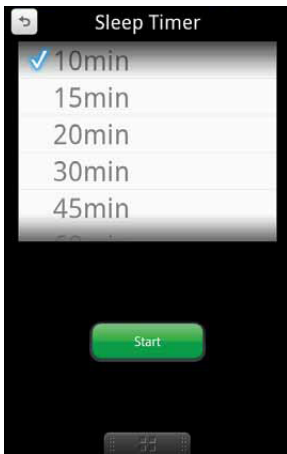
- 1 Launch **Philips DockStudio**.



- 2 Tap the icon  to access the sleep timer menu.



- 3 Select a time period for the sleep timer, and then tap **[Start]** (Start).



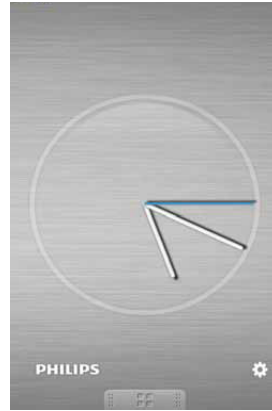
Note

- This function only works with **Philips Songbird**.

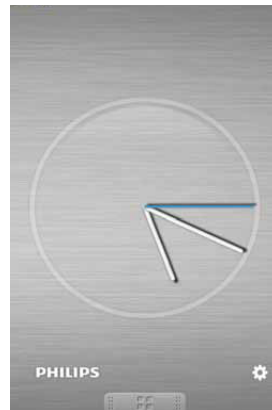
Set alarm timer

With **Philips DockStudio**, you can set multiple alarms and know the latest weather. It even alerts you when weather conditions are suitable for your favorite outdoors activity.

- 1 Launch the app.



- 2 Tap the icon ***** to access clock setting menu.



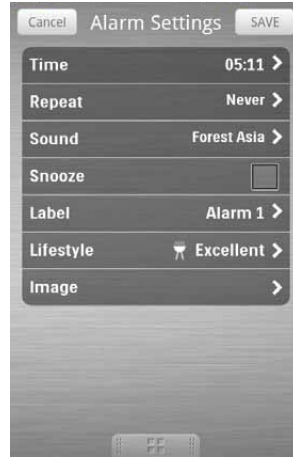
- 3 Tap **[Alarm settings]** (Alarm settings).



4 Tap **+** to access alarm setting menu.



5 Set the alarm, and tap **[Save]** (Save) on the top right of the screen.
 ↳ The new alarm is saved and displayed on the screen.



≡ Note

- From the **[Lifestyle]** (Lifestyle) tab, you can select your preferred sport and weather (excellent, good, or fair). The alarm will not ring if the weather is not good enough.

Charge your device through the USB socket

Connect a USB cable (not supplied) to:

- the socket at the back of the speaker.
 - the USB socket on your device.
- ↳ Your device begins charging.

≡ Note

- It is not guaranteed that all USB cables will work with this speaker.

Play audio from an external device

You can listen to audio from an external device through this speaker:

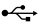
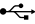
- 1 Connect an MP3 link cable (not supplied) to:
 - the **AUX IN** socket.
 - the headphone socket of an external device.
- 2 Play audio on the external device (see the device's user manual).

6 Product information

Note

- Product information is subject to change without prior notice.

Specifications

| | |
|---|---|
| Rated Output Power | 2 X 5 W RMS |
| AC Power | OH-1028A0903000U-VDE/-UK/-SAA/-CCC/-IR/-UL (Philips); OH-1028A0903000U (Philips). Input: 100-240V~, 50/60Hz, 800mA; MAX Output: 9V = 3A |
| Operation Power Consumption | < 35W |
| Eco Standby Power Consumption | < 1W |
| Dimensions - Main Unit (W x H x D) | 270.5 X 88.5 X 141.5 mm |
| Weight - Main Unit | 0.885 kg |
| Charging: | |
| - Only through micro USB connector | 2A |
| - Only through  socket | 2A |
| - Through micro USB connector and  socket | 1A for each |

7 Troubleshooting



Warning

- Never remove the casing of this device.

To keep the warranty valid, never try to repair the system yourself.

If you encounter problems when using this device, check the following points before requesting service. If the problem remains unsolved, go to the Philips Web page (www.philips.com/support). When you contact Philips, make sure that the device is nearby and the model number and serial number are available.

No power

- Make sure that the AC power adaptor of the device is connected properly.
- Make sure that there is power at the AC outlet.
- Make sure that the batteries are inserted correctly.
- If the speaker is powered by the batteries, make sure that the adapter is not connected to the device.

No sound or poor sound

- Adjust the volume of the docking system.
- Adjust the volume of your phone.

No response from the unit

- Disconnect and reconnect the AC power plug, then turn on the unit again.

The audio quality is poor after connection with a Bluetooth-enabled device.

- The Bluetooth reception is poor: Move the device closer to the system or remove any obstacle between the device and the system.

Cannot connect with the system.

- The device does not support the profiles required for the system.
- The Bluetooth function of the device is not enabled. Refer to the user manual of the device for how to enable the function.
- The system is not in the pairing mode.
- The system is already connected with another Bluetooth-enabled device. Disconnect that device or all other connected devices and then try again.

The paired device connects and disconnects constantly.

- The Bluetooth reception is poor: Move the device closer to the system or remove any obstacle between the device and the system.
- For some devices, the Bluetooth connection may be deactivated automatically as a power-saving feature. This does not indicate any malfunction of the system.

About Bluetooth device

Music playback is unavailable on the system even after successful Bluetooth connection.

- The device cannot be used with the system to play music.

8 Notice

Any changes or modifications made to this device that are not expressly approved by Philips Consumer Lifestyle may void the user's authority to operate the equipment.

Your product is designed and manufactured with high quality materials and components, which can be recycled and reused.

Never dispose of your product with other household waste. Please inform yourself about the local rules on the separate collection of electrical and electronic products and batteries. The correct disposal of these products helps prevent potentially negative consequences on the environment and human health.

Your product contains batteries, which cannot be disposed of with normal household waste. Please inform yourself about the local rules on separate collection of batteries. The correct disposal of batteries helps prevent potentially negative consequences on the environment and human health.

Please visit www.recycle.philips.com for additional information on a recycling center in your area.

Environmental information

All unnecessary packaging has been omitted. We have tried to make the packaging easy to separate into three materials: cardboard (box), polystyrene foam (buffer) and polyethylene (bags, protective foam sheet.)

Your system consists of materials which can be recycled and reused if disassembled by a specialized company. Please observe the local regulations regarding the disposal of packaging materials, exhausted batteries and old equipment.

Bluetooth Statement

Bluetooth®

The Bluetooth® word mark and logos are registered trademarks owned by Bluetooth SIG, Inc. and any use of such marks by Philips is under license.

Note

- The type plate is located on the bottom of the apparatus.



Specifications are subject to change without notice
© 2012 Koninklijke Philips Electronics N.V.
All rights reserved.

AS351_78_CCR_V2.0

