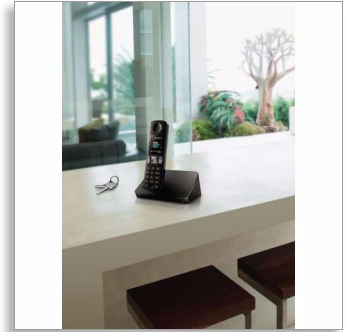




Philips
Cordless phone

D600
Black



D6001B



Rich set of features

Outstanding sound quality of HQ-Sound meets ergonomic and modern design. With large, full-color display and rich set of features like keypad backlight, various privacy settings, baby monitor and many more, this phone has all that you need.

As simple as ever

- High contrast, 4.3cm (1.7") TFT color display
- Privacy settings: call barring, silence mode with filtering
- Baby monitor alerts you when baby needs your attention
- Keypad backlight for fast access even in dark room
- Textured back cover for non-slip grip
- Up to 18 hours of talk time on a single charge
- AOH / Caller ID – so you always know who is calling*

Exceptional sound

- HQ-Sound: high quality acoustic engineering for superb sound
- MySound profiles to match your sound preference
- Full-duplex echo cancellation ensures a smooth conversation
- Freestanding handset with a speaker for easy handsfree calls

Eco-conscious product

- Low radiation (ECO and ECO+ modes) and power consumption

PHILIPS

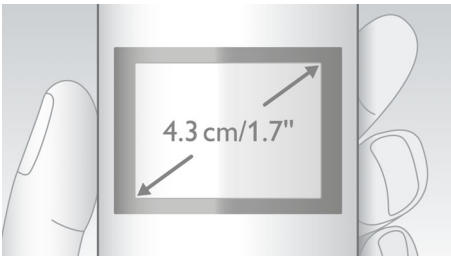
Highlights

Full-duplex echo cancellation



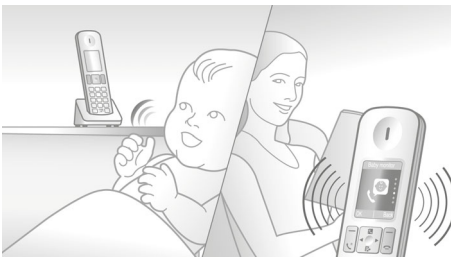
Natural conversation does not involve taking turns – there is always some natural overlap. Now thanks to our full-duplex echo cancellation, you can hear perfectly, even if you are both talking at the same time.

4.3cm (1.7") TFT color display



High contrast, 4.3cm (1.7") TFT color display

Baby monitor



Receive an alert when your baby needs you. Just place the DECT handset in the baby room and receive an alert on your base or on another DECT phone (i.e.. another landline number) or mobile phone (when you're out) when the baby starts to cry.

Eco-conscious model with ECO+



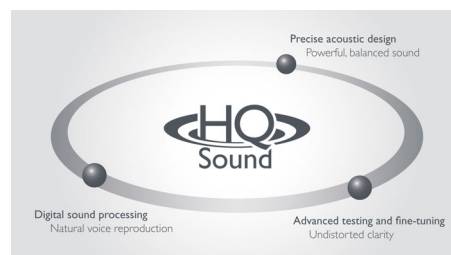
Philips phones are energy efficient and designed to be respectful to the environment. When ECO mode is activated the emitted radiation is reduced by up to 60%, and up to 95% when the phone is charging. Which ECO+ mode activation the radiation drops to zero.

Handset speakerphone



Handsfree mode uses a built-in loud speaker to amplify the voice of the caller, allowing you to speak and listen during a call without holding the phone to your ear. This is especially useful if you want to share the call with others or simply multitask.

HQ-Sound



Philips cordless phones with HQ-Sound: build upon decades of experience and breakthrough innovations in developing Hi-Fi audio products and high-end headphones to deliver excellent voice clarity on our DECT phones. When it comes to improving sound quality, our acoustics engineers and architects have

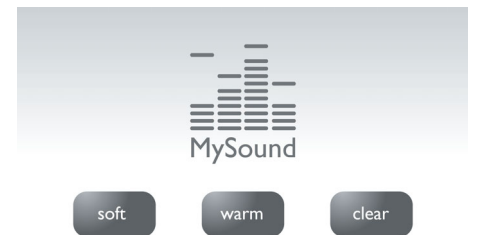
thought of everything – high quality components, digital signal processing, precise acoustic design, advanced testing and fine-tuning. The result is sound that is crisp, clear and authentic. Sound so good and natural, it is almost like being there in person.

Keypad backlight



The soft amber backlight makes keys easy to read in low light conditions and at night.

MySound profiles



Sound perception is subjective, and everyone has their own listening preference. MySound brings personality back to every conversation by allowing you to choose the audio profile that best matches your sound preferences: Clear – to make voices sound crisper and clearer; Soft – for friendly, softer tones; Warm – to make voices sound welcoming and warm.

Non-slip grip



The rear of the handset is treated with a special texture for added comfort and better grip.

Specifications

Sound

- HQ-Sound
- Sound Profile: MySound
- Volume control on handset
- Ringtones on handset: 10 polyphonic

Picture/Display

- Display size: 4.3cm / 1.7"
- Display type: TFT color 256K
- Backlight: Yes
- Backlight color: White

Convenience

- Menu structure in the handset: Icon Menu
- Speakerphone - talk handsfree
- Personalization: Silence mode and Night mode
- Call barring: Restrict the phone from making specific outgoing calls
- Signal strength indicator: 3- bar indicator
- Battery level indicator: 5- bar battery icon
- Intercom - multiple handsets
- Room monitoring
- Date / Time display
- Alarm Clock
- Event light on the handset
- Programmable hot keys: Key 1 and 2
- Call Management: Call Waiting*, AOH/ Caller ID, Microphone mute, Missed Calls, Received Calls
- Key tone on/off
- Auto Registration
- Auto hang up
- Multi base capability: 1
- Multi handset capability: Up to 4
- Number of keys: 22
- Backlit keypad: Soft Amber
- Enlarge dialing digit
- Base Station keys: Paging key
- Charge time: 8 hours
- Line cord length: 1.8m
- Power cord length: 1.8m
- Range: Open field <300m; indoor <50m

- Non-slip grip: Pinstripe
- Up to 18 hrs talk time
- Up to 250 hrs standby time

Memory Capacity

- VIP Caller Identification
- Phonebook: 100 names and numbers
- Redial List Capacity: 20 last numbers
- Call log entries: 50 entries
- Phonebook store in the base

Power

- Battery capacity: 550 mAh
- Battery type: AAA NiMH Rechargeable
- Mains power: AC 100-240V ~50/60Hz
- Power Consumption: < 0.7 W

Security

- Transmission encryption : Yes

Network Features

- Compatible: GAP

SAR Value

- Philips handsets: <0.1 W/kg

Eco Design

- EcoMode: automatic & manual
- Eco+

Packaging dimensions

- EAN: 87 12581 66536 4
- Type of shelf placement: Laying
- Packaging dimensions (W x H x D): 18.5 x 13.6 x 8 cm
- Gross weight: 0.456 kg
- Nett weight: 0.359 kg
- Number of products included: 1
- Packaging type: Carton
- Tare weight: 0.097 kg



Issue date 2015-04-24

Version: 3.0.4

12 NC: 8670 000 97031
EAN: 87 12581 66536 4

© 2015 Koninklijke Philips N.V.
All Rights reserved.

Specifications are subject to change without notice.
Trademarks are the property of Koninklijke Philips N.V.
or their respective owners.

www.philips.com