



Philips  
Mini Hi-Fi System

Dual Bluetooth® and NFC



NTRX100

# The ideal party machine

## Obsessed with sound

Get the ultimate party going now, With the Philips NTRX100's dual rotatable discs, you can play & charge two smartphones, mix & match from the devices' libraries. Streaming music wirelessly via Bluetooth, thanks to One-Touch NFC pairing.

### Enjoy your music from multiple sources

- Dual Bluetooth allow music streaming from 2 smartphones
- Dual rotatable dock for playing & charging your smartphones
- Dual USB for easy MP3 music playback
- Dual Audio-in for easy MP3 music playback

### Enrich your sound experience

- NX bass button for instant sound boost & light effects
- Digital Sound Control for optimized music style settings

### Extend your party machine music

- Simple setup with any Philips party machines
- Flexible placement around the house
- Dynamic lighting for dancing to the beat

# PHILIPS

# Highlights

## Dynamic lighting



Step in time to the dazzling beat of music. Cool lights blink to the rhythm of songs, adding fun and excitement to tunes. When you don't want the lights on, you can simply turn the feature off. Add glam and spice to dance parties, sizzling celebrations and cool events with these sensational dynamic lights.

## Simple setup

Simple setup with any Philips party machines

## Digital Sound Control



Digital Sound Control offers you a choice of pre-set Jazz, Rock, Pop and Classic controls you can use to optimise the frequency ranges for different musical styles. Each mode uses graphic equalizing technology to automatically adjust the sound balance and

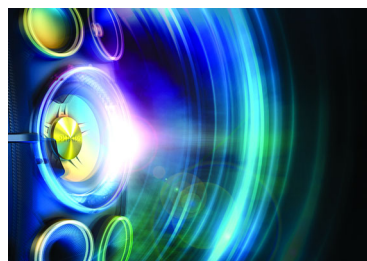
enhance the most important sound frequencies in your chosen music style. Ultimately, Digital Sound Control makes it easy for you get the most out of your music by precisely adjusting the sound balance to match the type of music you are playing.

## Dual Bluetooth



Dual Bluetooth allow music streaming from 2 smartphones

## NX bass button



Available throughout the range, NX bass temporarily boosts bass and loudness to the extreme. Hit the NX bass button to instantly juice up your sound, make lighting effects go wild, and feel the immense bass of the subwoofers thundering through your bones.

# Specifications

## Audio playback

- Playback media: USB flash drive, Audio-in, Bluetooth
- USB Direct playback modes: fast backward/fast forward, play/pause, previous/next, program play, repeat, shuffle, stop

## Loudspeakers

- Number of speaker boxes: 2
- Speaker drivers: 2" tweeter, 5.25" woofer
- Loudspeaker enhancement: 2-way
- Speaker types: bass reflex speaker system

## Sound

- Sound enhancement: NX Bass, digital sound control 4 modes, Dynamic Bass Boost 3 steps
- Total Sound Power: 300W (for Brazil), 380W (for other countries)

## Tuner/Reception/Transmission

- Antenna: FM antenna
- Station presets: 20
- Tuner bands: FM
- Tuner enhancement: auto digital tuning, auto scan, Easy set (plug & play)

## Connectivity

- Headphone: 3.5 mm
- Microphone: dual microphone sockets
- USB: USB host
- MP3 Link: 3.5mm stereo line in

## Convenience

- Karaoke: MIC volume, echo control
- Display type: LCD display, VFD display

## Accessories

- Remote control: 13-key
- User Manual: English
- Cables/Connection: power cord
- Others: Quick start guide, batteries for remote control, FM antenna
- Warranty: World Wide Guarantee booklet

## Dimensions

- Packaging height: 442 mm
- Packaging width: 780 mm
- Packaging depth: 430 mm
- Product dimensions (WxDxH): 704 x 364 x 385 mm

## Power

- Power supply: 100 - 240V AC, 50/60Hz



Issue date 2015-12-01

Version: 2.1.4

12 NC: 8670 001 10053  
EAN: 87 12581 70459 9

© 2015 Koninklijke Philips N.V.  
All Rights reserved.

Specifications are subject to change without notice.  
Trademarks are the property of Koninklijke Philips N.V.  
or their respective owners.

[www.philips.com](http://www.philips.com)

\* Avoid extensive use of the set in a volume higher than 85 decibel because this may damage your hearing.