

Register your product and get support at
www.philips.com/support

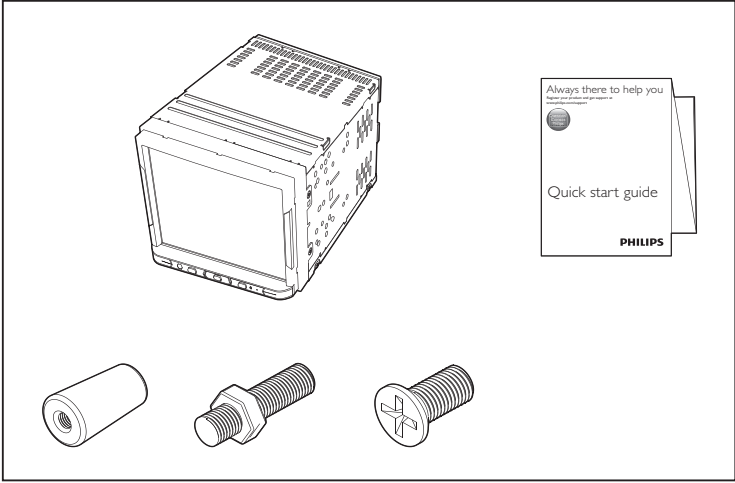
Quick start guide



2017 © Gibson Innovations Limited. All rights reserved.
This product has been manufactured by, and is sold under the responsibility of Gibson Innovations Ltd.,and Gibson Innovations Ltd. is the warrantor in relation to this product
Philips and the Philips Shield Emblem are registered trademarks of Koninklijke Philips N.V. and are used under license.

CE600BT_12_QSG_SafetySheet_V2.0

CE 0700



Safety

Read and understand all instructions before you use the device. If damage is caused by failure to follow instructions, the warranty does not apply.

- The device is designed for negative ground (earth) 12 V DC operation only.
- Risk of car accidents! Never watch video or operate this system while driving.
- To ensure safe driving, adjust the volume to a safe and comfortable level.
- Improper fuses can cause damage or fire. When you need to change the fuse, consult a professional.
- Use only the supplied mounting hardware for a safe and secure installation.
- To avoid short circuits, do not expose the device, remote control or remote control batteries to rain or water.
- The device shall not be exposed to dripping or splashing.
- Do not place any sources of danger on the device (e.g. liquid filled objects, lighted candles).
- Never insert objects into the ventilation slots or other openings on the device.
- Risk of damage to the screen! Never touch, push, rub or strike the screen with any object.
- Clean the device with soft, damp cloth. Never use substances such as alcohol, chemicals or household cleaners on the device.
- Always install this system in the car dashboard. Other locations can be dangerous as the rear of the system heats up during use.
- To avoid short-circuit: before you connect, make sure that the ignition is off.
- Make sure that you connect the yellow and red power supply leads after all other leads are connected.
- Make sure that all loose leads are insulated with electrical tape.
- Make sure that the leads do not get caught under screws iron parts that will move (e.g. seat rail).
- Make sure that all ground (earth) leads are run to a common ground (earth) point.
- Use only the supplied mounting hardware for a safe and secure installation.
- When you connect other devices to this system, make sure that the rating of the car circuit is higher than the total fuse value of all the connected devices.
- Never connect speaker wires to the metal body or chassis of the car.
- Never connect speaker wires with stripes to one another.

Compliance

This product complies with the requirement of the 1999/5/EC directive.

Declaration of conformity

Hereby, Gibson Innovations declares that this product is in compliance with the essential requirements and other relevant provisions of Directive 1999/5/EC. You can find the Declaration of Conformity on www.p4c.philips.com.

Care of the environment

Environmental information

All unnecessary packaging has been omitted. We have tried to make the packaging easy to separate into three materials: cardboard (box), polystyrene foam (buffer) and polyethylene (bags, protective foam sheet.) Your system consists of materials which can be recycled and reused if disassembled by a specialized company. Please observe the local regulations regarding the disposal of packaging materials, and old equipment.

Disposal of your old product



Your product is designed and manufactured with high quality materials and components, which can be recycled and reused.



This symbol on a product means that the product is covered by European Directive 2012/19/EU. Inform yourself about the local separate collection system for electrical and electronic products.

Follow local rules and never dispose of the product with normal household waste. Correct disposal of old products helps prevent negative consequences for the environment and human health.

Trademark notice



The Bluetooth® word mark and logos are registered trademarks owned by Bluetooth SIG, Inc. and any use of such marks by Gibson Innovations Limited is under license. Other trademarks and trade names are those of their respective owners.



Windows Media and the Windows logo are trademarks, or registered trademarks of Microsoft Corporation in the United States and/or other countries.

Copyright

2017 © Gibson Innovations Limited. All rights reserved.
Philips and the Philips Shield Emblem are registered trademarks of Koninklijke Philips N.V. and are used under license.
Specifications are subject to change without notice. Gibson Innovations reserves the right to change products at any time without being obliged to adjust earlier supplies accordingly.

Product information

Power

- **Power supply:** 12 V DC (11 V - 16 V), negative ground
- **Fuse:** 15 A

Display

- **Type:** LCD Touch-sensitive screen
- **Diagonal screen size (inch):** 6.8
- **Resolution:** WVGA

Sound

- **Suitable speaker impedance:** 4 – 8 Ω
- **Maximum power output:** 50 W x 4 channels
- **Continuous power output:** 22 W x 4 channels (4 Ω 10% T.H.D.)
- **Pre-Amp output voltage:** 2.0 V

4. All such repaired, replaced or substituted Goods continue to receive the benefit of this Additional Warranty for the time remaining on the original Warranty Period.

5. This Additional Warranty is limited to repair, replacement or substitution only. As far as the law permits, we will not be liable for any loss or damage caused to property or persons arising from any cause whatsoever.

6. In order to claim under this Additional Warranty you must contact us within the Warranty Period.

Australia	New Zealand	South Africa
DLG International Telephone: 1800 304 811 E-mail: service@dlgint.com.au	DLG International Telephone: 0800 437 663 Email: service@dlgint.co.nz	Connoisseur Electronics (Pty) Ltd Telephone: 0860100551 Email: info@connoisseur.co.za

You will be asked for details of the Goods, a description of the defect and your personal details. Upon accepting your claim, we shall assist you with either returning the Goods to the Supplier for replacement or to the most convenient Philips Authorized Service Centre for your Goods to be repaired. In some case we may require that you return to the Goods to us (at the address below) for repair, replacement or substitution.

- * All returned Goods must be accompanied by satisfactory proof of purchase which clearly indicates the name and address of the Supplier, the date and place of purchase and identifies product. It is best to provide a legible and unmodified receipt or sales invoice.
- * You must bear any expense for return of the Goods or otherwise associated with making your claim under this Additional Warranty.

7. This warranty is only valid and enforceable in Australia, New Zealand and South Africa.

Contact us or the place of purchase for further details.

Australia	New Zealand	South Africa
DLG International Enterprise Unit K 11 Ave Echelon Place Berwick East Tamaki 3086 Melbourne	DLG International Unit K 11 Echelon Place East Tamaki 2013	Connoisseur Electronics (Pty) Ltd The Mediterranean Conference Centre 72 Concorde Road East Bedfordview Gauteng 2007

Service: 1800 304 811
E-mail: service@dlgint.com.au
Service: 0800 437 663
Email: service@dlgint.co.nz
Service: 0860100551
E-mail: info@connoisseur.co.za

November 2016

Warranty against Defects

In this warranty:

We or us means Gibson Innovations ABN 531 651 059 75, and our contact details are set out at the end of this warranty;

You means the purchaser or the original end-user of the Goods;

Supplier means the authorised distributor or retailer of the Goods that sold you the Goods in Australia, New Zealand or South Africa; and

Goods means the product or equipment which was accompanied by this warranty and purchased in Australia, New Zealand or South Africa.

If you require assistance with the operation of the product, its features or specifications please contact

Australia	New Zealand	South Africa
DLG International Telephone: 1800 304 811 E-mail: service@dlgint.com.au	DLG International Telephone: 0800 437 663 Email: service@dlgint.co.nz	Connoisseur Electronics (Pty) Ltd Telephone: 0860100551 Email: info@connoisseur.co.za

Australia: Our Goods come with guarantees that cannot be excluded under the Australian Consumer Law. You are entitled to a replacement or refund for a major failure and for compensation for any other reasonably foreseeable loss or damage. You are also entitled to have the Goods repaired or replaced if the goods fail to be of acceptable quality and the failure does not amount to a major failure. This is not a complete statement of your legal rights as a consumer.

New Zealand: Our Goods come with guarantees that cannot be excluded under the Consumer Guarantees Act 1993. This guarantee applies in addition to the conditions and guarantees implied by that legislation.

Additional Warranty:

In addition to the rights and remedies that you have under the Australian Consumer Law, Consumer Guarantees Act of New Zealand, South African Law, or any other applicable law, we provide the following warranty against defects:

1. If, during the first **12 months** from their date of purchase from the Supplier (**Warranty Period**), the Goods prove defective by reason of improper workmanship or materials and none of your statutory rights or remedies apply, we will repair or replace the Goods without charge.
2. We do not have to repair or replace the Goods under this Additional Warranty if the Goods have been used for a commercial purpose; misused, improperly or inappropriately installed, operated or repaired; abused; damaged; or not maintained in accordance with the manufacturer's instructions.
3. Even when we do not have to repair or replace the Goods, we may decide to do so anyway. In some cases, we may decide to substitute the Goods with a similar alternative product of our choosing. All such decisions are at our absolute discretion.

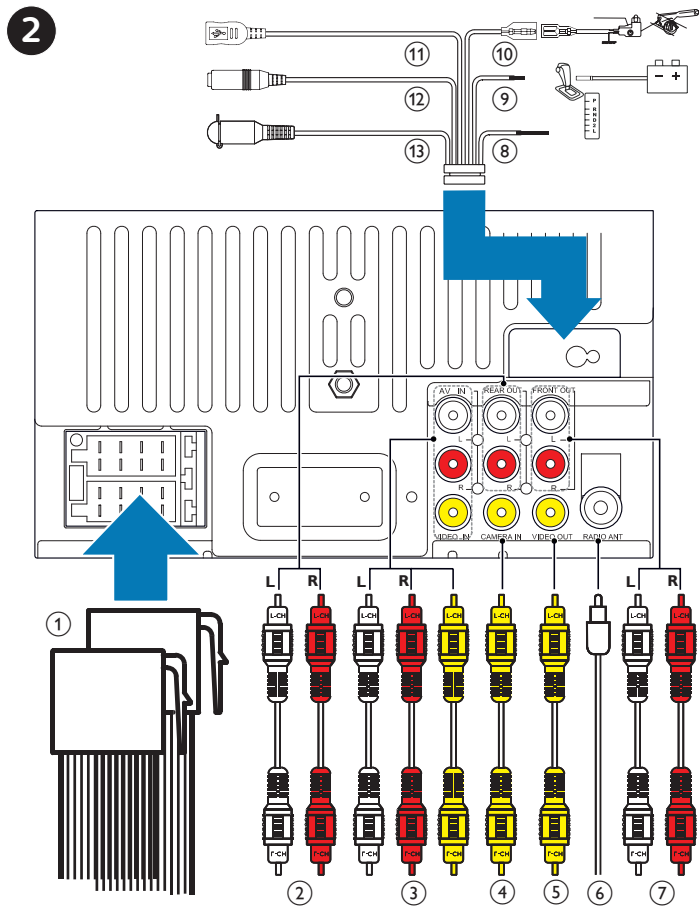
Setup

Connect wires

1

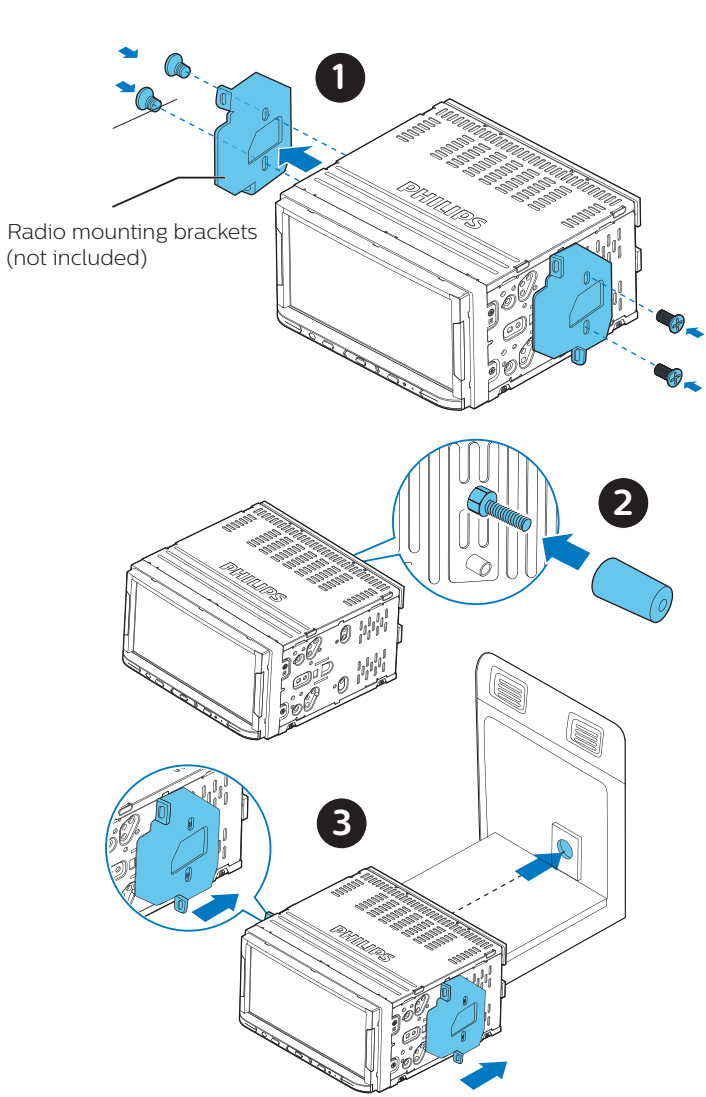
a b c d e f g h i

ISO male connectors	Connect to
a Green strip, black-edged green strip	Rear left speaker
b White strip, black-edged white strip	Front left speaker
c Gray strip, black-edged gray strip	Front right speaker
d Purple strip, black-edged purple strip	Rear right speaker
e Red strip	Ignition key +12V DC when ON/ACC
f Blue strip	Motor/electric antenna relay control lead
g Blue strip, white strip	Amplifier relay control lead
h Black strip	Ground
i Yellow strip	The +12V car battery which is energized at all times



Connectors and sockets on rear panel	External sockets or connectors
① For ISO male connectors	As indicated above
② REAR OUT L (White socket) REAR OUT R (Red socket)	Rear left speaker Rear right speaker
③ AV-IN L (White socket) AV-IN R (Red socket) VIDEO IN (Yellow socket)	Left audio output of the external player Right audio output of the external player Video output of the external player
④ CAMERA IN (Yellow socket)	Video output socket of an external camera
⑤ VIDEO OUT (Yellow socket)	Video input of the external display device
⑥ RADIO ANT	Radio antenna
⑦ FRONT OUT L (White socket) FRONT OUT R (Red socket)	Front left speaker Front right speaker
⑧ IR OE (Black/brown wire)	OE remote
⑨ REVERSE (Purple wire)	Reverse camera (B+)
⑩ PARKING (Pink wire)	Parking brake (-)
⑪ USB (Black socket)	USB connector of the external USB storage device
⑫ MIC (Black socket)	External microphone
⑬ SUB-W OUT (Black socket)	Sub-woofer

Mount into the dashboard



Note

- The package does not include trim plate and mounting parts such as **radio mounting brackets** for the reason that they are specific to car type. Before installation, consult the dealer or professional installer for the right mounting kit.

Overview

Main unit

① ② ③ ④ ⑤ ⑥ ⑦

① **Power**

- Press to switch on.
- Press and hold to switch off.
- Press to mute or unmute.

② **Volume**

- Press to increase or decrease the volume.

③ **Display**

- Press to display the set clock.

④ **RES**

- Press to reset the system.

⑤ **MIC**

- Microphone

⑥ **Touch screen**

⑦ **Home**

- Press to enter the Home screen.

Home screen

RADIO USB CALL BT

AV-IN SOUND SETTINGS

12:38 PM Mon 27

Tap the icons to select functions:

- Tune to FM/AM radio stations.
- Play music/videos from the connected USB storage device.
- Make/ answer phone calls from the connected mobile phone.
- Stream music from the connected Bluetooth device.
- Play music/videos from the external media player that is connected through audio/video cables.
- Select sound options.
- Enter the settings menu.

Settings menu

Beep On

Clock Mode 24H

Date/Time

OSD Language English

Visit www.philips.com/support to download the latest user manual and find troubleshooting tips.

www.philips.com/support