

PHILIPS

CVR800

Car driving recorder
行車記錄儀

User manual

用户手册

使用手冊

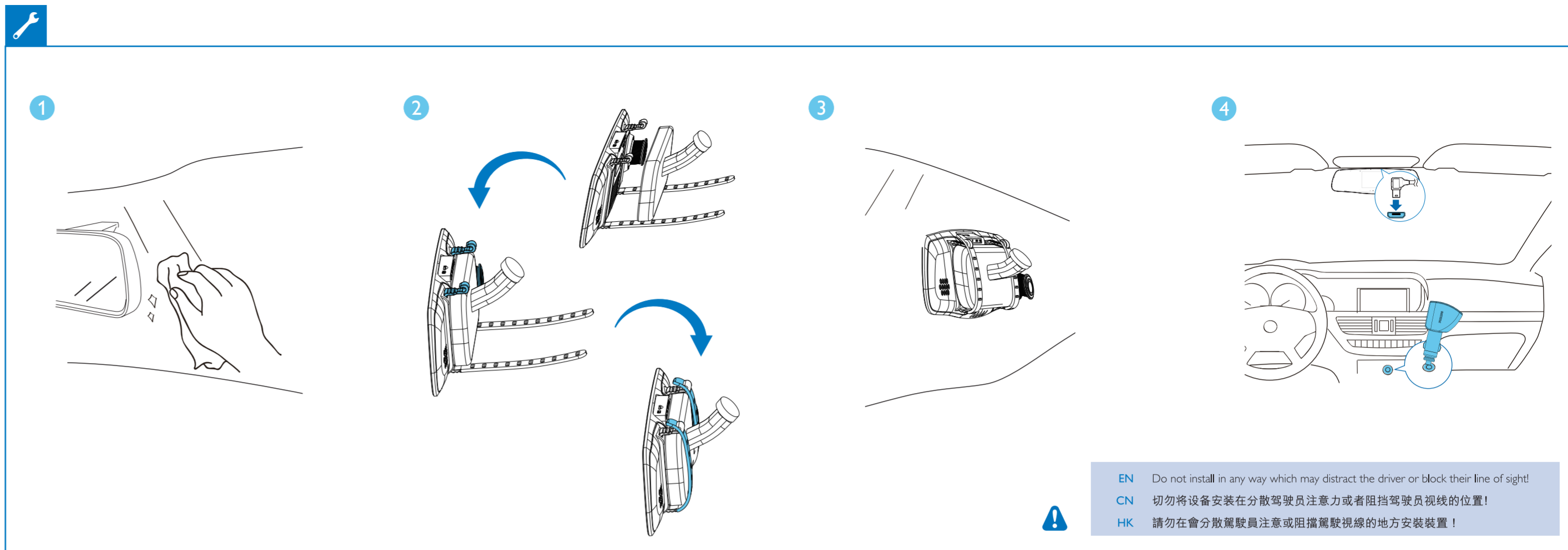
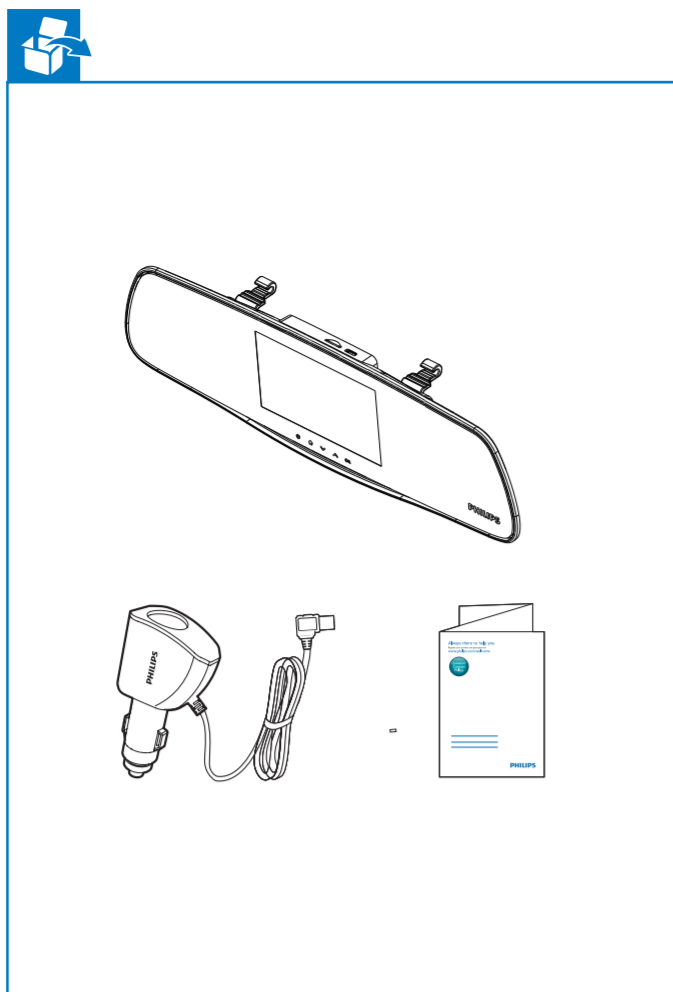


Register your product and get support at
www.philips.com/support

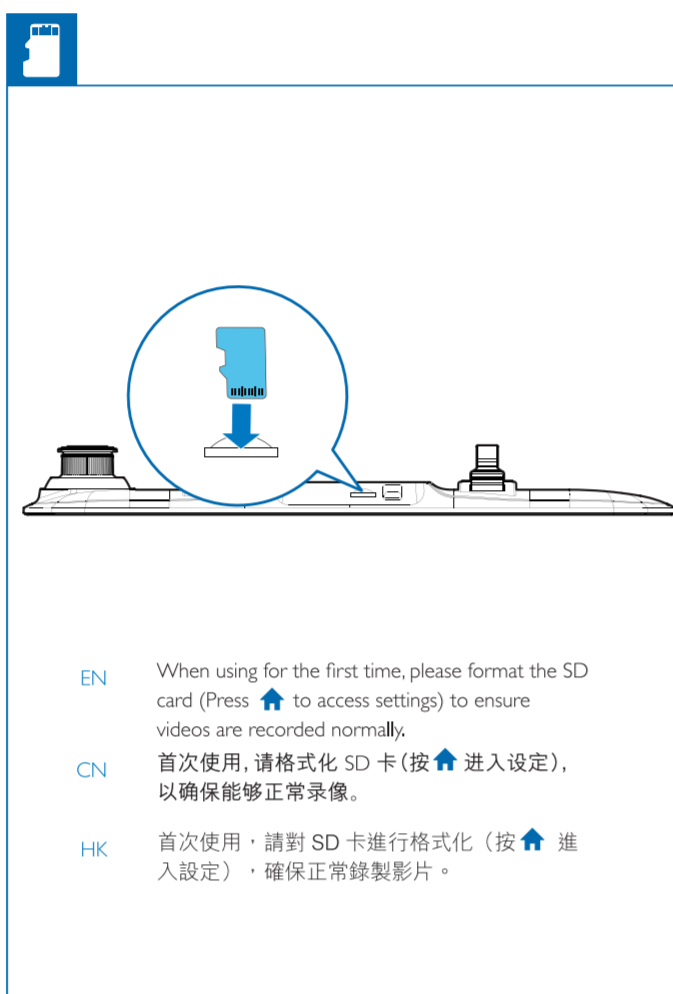


2016 © Gibson Innovations Limited. All rights reserved.
This product has been manufactured by, and is sold under the
responsibility of WOOX Innovations (Shanghai) Commercial
Company Ltd., and WOOX Innovations (Shanghai) Commercial
Company Ltd., is the warrantor in relation to this product.
Philips and the Philips Shield Emblem are registered
trademarks of Koninklijke Philips N.V. and are used under
license.

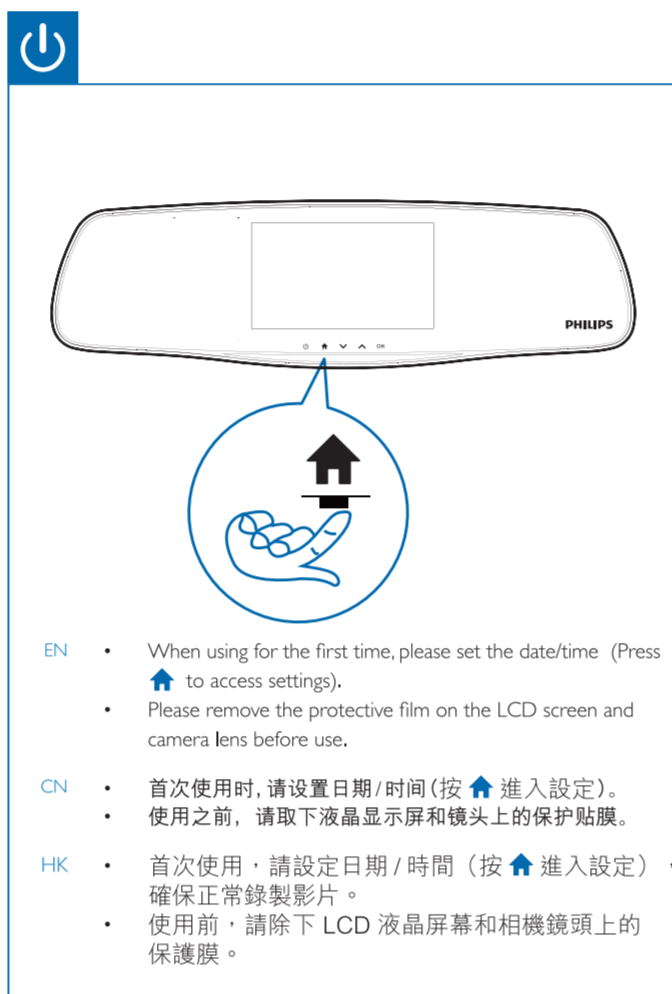
CVR800_93_UM_V2.0



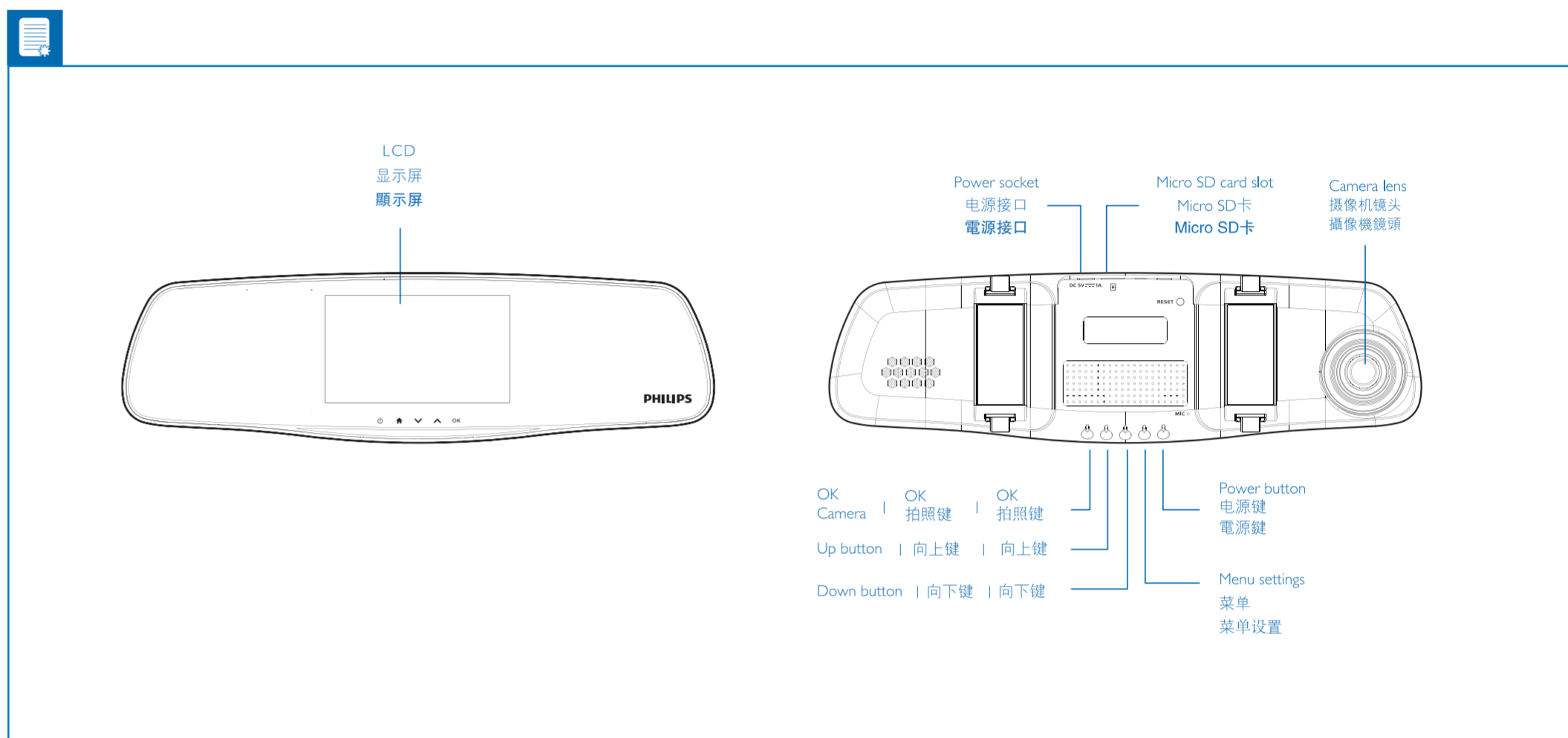
EN Do not install in any way which may distract the driver or block their line of sight!
CN 切勿将设备安装在分散驾驶员注意力或者阻挡驾驶员视线的位置!
HK 請勿在會分散駕駛員注意力或阻擋駕駛員視線的地方安裝裝置!



EN When using for the first time, please format the SD card (Press **Home** to access settings) to ensure videos are recorded normally.
CN 首次使用, 請格式化 SD 卡 (按 **Home** 進入設定), 以確保能夠正常錄像。
HK 首次使用, 請對 SD 卡進行格式化 (按 **Home** 進入設定), 確保正常錄製影片。



EN When using for the first time, please set the date/time (Press **Home** to access settings).
CN 首次使用时, 请设置日期/时间 (按 **Home** 进入设定)。
HK 首次使用, 請設定日期/時間 (按 **Home** 進入設定), 確保正常錄製影片。
CN 使用之前, 請取下液晶顯示屏和鏡頭上的保護貼膜。
HK 使用前, 請取下 LCD 液晶螢幕和相機鏡頭上的保護膜。



Settings menu (摄像设定) with sub-menus: Mode selection (模式选择), Resolution (解析度), Recording time (录像时间), Mobile detection (移动侦测). Includes instructions for navigating the menu and adjusting settings like resolution, recording time, and mobile detection.

Video recording mode (录像模式) instructions. Includes a diagram of the recording interface showing 'Secure record' and 'Record time'. Provides step-by-step instructions in EN, CN, and HK for entering the video setting menu, selecting options, and confirming settings.

Photo capture mode (拍照模式) instructions. Includes a diagram of the photo capture interface showing '8M' resolution. Provides step-by-step instructions in EN, CN, and HK for entering the photo setting menu, selecting options, and taking photos.

