

# Quick start guide



- 1 Prepare
- 2 Connect
- 3 Register

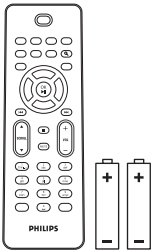
Register your product and get support at  
[www.philips.com/welcome](http://www.philips.com/welcome)

**Please read and accept our Streamium terms & conditions as well as the Software End User License Agreement that are included in the User Manual on the CD-ROM**

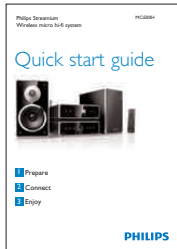
# What's in the box



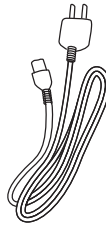
Wireless Micro Hi-Fi System MCI500H



Remote control  
2 x AAA batteries



Quick start guide



1 x AC power cable



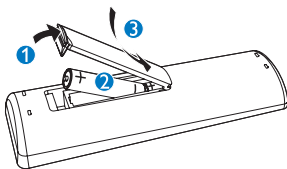
1 x FM wire antenna



CD-ROM (User manual  
and software)

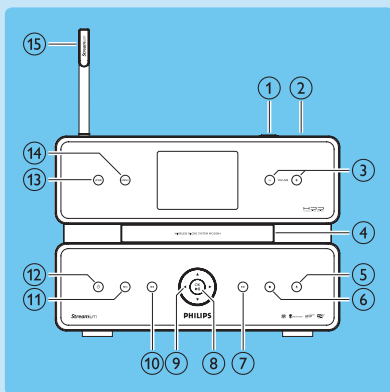
Before using the remote control:

Insert batteries as shown.



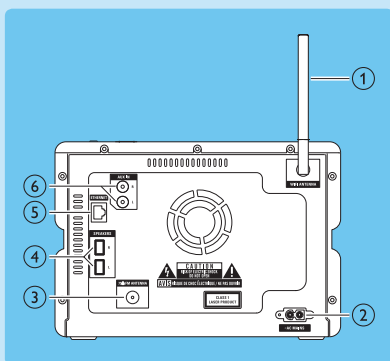
# 1 Prepare

## A Front view



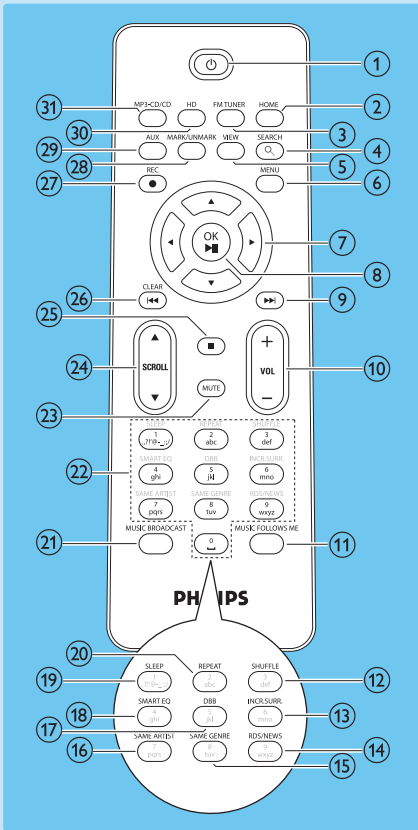
- ① USB jack
- ② headphones
- ③ **-VOLUME +** volume up / down
- ④ CD tray
- ⑤ ▲ eject disc
- ⑥ ■ stop
- ⑦ ►► skip forward
- ⑧ **OK / ►||** confirm / play/pause
- ⑨ ◀▶▲▼ navigate
- ⑩ ◀◀ skip back
- ⑪ **REC** record
- ⑫ ⏻ power
- ⑬ **HOME**
- ⑭ **MENU**
- ⑮ WiFi antenna

## Back view



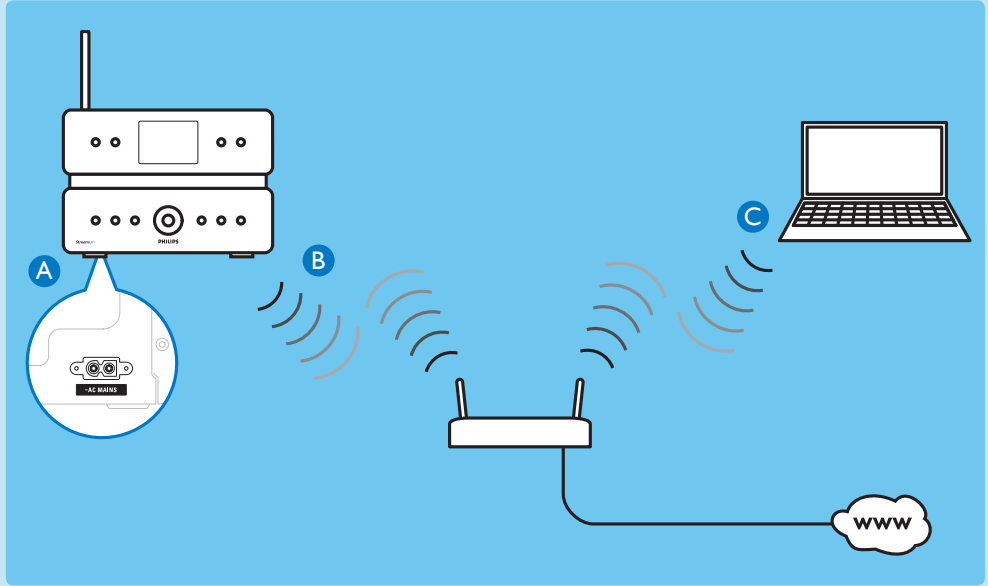
- ① WiFi antenna
- ② ~ AC MAINS power supply connection
- ③ **FM ANTENNA**
- ④ **SPEAKERS R / L**
- ⑤ **ETHERNET**
- ⑥ **AUX IN R / L** external device connections

## B Remote control



- 1
- 2 **HOME**
- 3 **FM TUNER**
- 4 **SEARCH**
- 5 **VIEW**
- 6 **MENU**
- 7 navigate
- 8 **OK /**  confirm / play/pause
- 9 skip forward
- 10 **+ VOL -** volume up / down
- 11 **MUSIC FOLLOWS ME**
- 12 **SHUFFLE** random play
- 13 **INCR.SURR.** Incredible Surround sound
- 14 **RDS/NEW**
- 15 **SAME GENRE**
- 16 **SAME ARTIST**
- 17 **DBB** Dynamic Bass Boost
- 18 **SMART EQ**
- 19 **SLEEP** standby timer
- 20 **REPEAT**
- 21 **MUSIC BROADCAST**
- 22 Alphanumeric key
- 23 **MUTE**
- 24 **SCROLL**
- 25 stop
- 26 **CLEAR** skip back
- 27 **REC** record
- 28 **MARK/UNMARK**
- 29 **AUX** select external device
- 30 **HD** harddisk music
- 31 **MP3-CD/CD**

## 2 Connect



- A** Connect the MCI500H to the power supply
- B** Connect the MCI500H to a home network
- C** Connect the MCI500H to a home network with PC

**This section describes the most commonly used wireless home network setup. (For instructions on how to create other type of connection, refer to the User Manual.)**

When you connect the MCI500H to a home network with broadband Internet access  
 You can build a library on the HD (harddisk) and listen to the HD music.  
 You can listen to Internet radio.  
 You can connect to the Internet for firmware updates

## START HERE...

**Important!** For first-time setup, ensure that your network name and network password or the encryption key are available.

### A Connect the MCI500H to the power supply

When you connect the MCI500H to the power supply for the first time:

- 1 Wait until the language selection menu pops up, to select your language.
- 2 Press ▲ or ▼, then ► to select the language.  
 > The display shows the Home menu.
  - To select the network settings, follow the steps on how to connect to a home network.

### B Connect to a home network:

- 1 Ensure that your encryption key (if required) is available.
- 2 Ensure that your wireless access point or wireless router with broadband Internet access is turned on.
- 3 Ensure that the MCI500H is turned on.
- 4 On the MCI500H, press **MENU**.
- 5 Press ▲ or ▼, then ► to select **[Settings]** > **[Network]**.
- 6 Press ▲ or ▼, then ► to select **[Wireless]**.
- 7 Press ▲ or ▼, then ► to select network.
- 8 Use the remote control to enter the encryption key (if required), then press **OK**.
- 9 Press ▲ or ▼, then ► to select **[Automatic]** > (Apply settings?) **[Yes]**.  
 > The MCI500H displays a confirmation screen that the settings are saved.

**Note** The chapter [Connect to a home network](#) in the user manual contains more information about network connections.

## C Build a music library on the harddisk

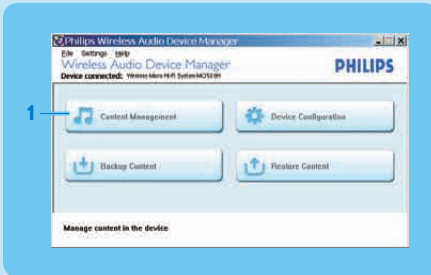
You have the following options to build a music library on the harddisk:

- rip music from CDs (see user manual **Rip music from CDs**)
- import music from a PC (see user manual **Import music from a PC**)
- record music from FM radio (see user manual **Record music**)
- record music from an external device (see user manual **Record music**)

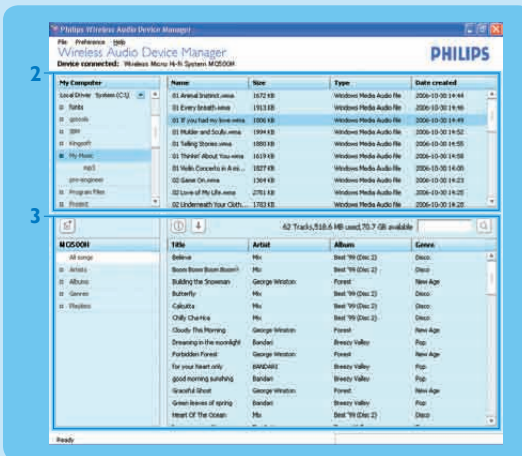
### Import music from a PC

The import of music requires installation of the WADM (Wireless Audio Device Manager) in the supplied PC installer.

- 1 In the WADM main menu, click Content Management.



- 2 In 'My Computer' (top window) click to select file(s).
- 3 Drag and drop selected file(s) to 'MCE500H' (bottom window).





### Rip music from CDs to the harddisk on the MCI500H

Rip from a CD at high speed:

(Audio CD, MP3/WMA CD)

- 1 On the MCI500H, insert a CD with printed side facing up.
- 2 In the track list screen, press **REC**.
- 3 Press **MARK/UNMARK** to mark tracks.
- 4 Press **REC** to start ripping. (Only the Stop ■ function is available during ripping.)
- 5 To rip another CD, repeat above steps 1 to 4.
  - To stop ripping, press ■.

**Note** Press **REC** during play, to rip while you listen.

### D Play HD music

- 1 Press HD to enter the HD music menu.
- 2 Press ▲ or ▼, then ► to select menu options.
  - > *The display guides you through the menu.*
- 3 Press **OK/►||** to play.
  - To stop play, press ■.

### E Internet radio

#### Note

Internet radio features require broadband Internet access.

Internet radio features require registration, if you run firmware version 1.xx.xxxx on MCI500H.

#### Listen to Internet radio

- 1 Ensure that MCI500H is turned on.
- 2 Ensure that MCI500H is connected to the Internet.
- 3 Press **HOME**.
- 4 Press ▲ or ▼, then ► to select **[Internet Radio]**.
  - > *The options are displayed.*
  - Press ▲ or ▼, then ► to select the station.
  - To return to the Home menu, press **HOME**.

#### Mark Internet radio stations as Favorites

You can mark Internet radio stations as your Favourites so next time you want to listen to a station, it is easy to find.

- 1 Ensure that MCI500H is turned on.
- 2 Ensure that MCI500H is connected to broadband Internet.
- 3 When you listen to Internet radio, press ► to mark the station.
  - To return to the Home menu, press **HOME**.
  - The next time you connect to the Internet radio, the radio station is shown in the Favorite Stations menu.

**Note** You can also place bookmarks for Internet radio stations when you log on at [www.philips.com/welcome](http://www.philips.com/welcome) and on the registered product site click the link Streamium Management.

### Listen to Favorite Stations

When you place bookmarks for Internet radio stations, you can find them under Favorite Stations.

- 1 Ensure that MCI500H is turned on.
- 2 Ensure that MCI500H is connected to the Internet.
- 3 Press **HOME**.
- 4 Press ▲ or ▼, then ► to select [**Internet Radio**] > [**Favorite Stations**].
  - To return to the Home menu, press **HOME**.

**Note** You can also organize your Favorites under Streamium Management on the Philips website.

### Listen to My Media

My Media allows you to manually add Internet radio stations that are not included in the standard service.

- 1 Follow the steps to register MCI500H with Philips.
- 2 Follow the steps to manually add Internet radio stations.
- 3 Ensure that MCI500H is turned on.
- 4 Ensure that MCI500H is connected to the Internet.
- 5 Press **HOME**.
- 6 Press ▲ or ▼, then ► to select [**Internet Radio**].
- 7 Press ▲ or ▼, then ► to select [**My Media**].
  - To return to the Home menu, press **HOME**.

## F Stream music from a UPnP device / computer

If TwonkyMedia™ is already installed on the PC, you can skip the installation section and continue with the configuration.

### Install TwonkyMedia™ Server

- 1 On the computer, insert the supplied software CD.
  - Installation of TwonkyMedia™ starts.
- 2 Follow the instructions on the computer to install the software.

### Configure a PC to share music

You can share music from a PC with the MCI500H.

- 1 Follow the instructions to install TwonkyMedia™ Server.
- 2 On the PC, click **Start > Programs > TwonkyMedia™ > TwonkyMedia™ Tray Control**.
- 3 On the task bar, click on the TwonkyMedia™ Server icon.
- 4 Choose **Media Server Settings**.
- 5 In the **Basic Settings** of the Configuration Page, click **Sharing**.
  - > *The content directories are scanned.*
    - To manually locate the music, click **Browse**.
    - To manually add a new content directory, click **Add new content directory**.
    - To save the changes, click **Save changes**.
- 6 On the remote control of MCI500H, press **HOME**.
- 7 Select [**UPnP**] and confirm with **OK**.
  - > *The display shows [**Searching for UPnP servers...**].*
- 8 Press **▲/▼** to select the server name and confirm with **OK**.

**Tip** The TwonkyMedia™ sharing page lets you set the rescan behavior of the server. The default setting is -1 minutes, which ensures auto-scan.

# 3 Register

- Free software upgrade
- Manage your own favorite radio stations
- Receive Streamium Newsletter

## A Online registration

- 1 Go to our website [www.philips.com/welcome](http://www.philips.com/welcome) and click on **Register my product** link.
- 2 Follow the simple instructions to register your product.

## Frequently asked questions

### About the Environment

Question	Answer
<b>Is there a maximum distance of transmission between Philips Wireless Micro Hi-Fi System and Wi-Fi routers for effective streaming?</b>	Yes. The maximum distance of Wi-Fi transmission is 250m measured in open spaces. However, in a home environment, where solid obstacles such as walls and doors are present the effective transmission distance is significantly reduced to approximately 50 - 100m. Try to re-position the set if you experience transmission problems.

### About Music Management

Question	Answer
<b>Is Philips Wireless Micro Hi-Fi System upgradable?</b>	Yes, Philips Wireless Micro Hi-Fi System are software upgradable, which means that they are ready for future functional upgrades if available. Check our website regularly for the latest news on new features and improvements at <a href="http://www.philips.com/support">http://www.philips.com/support</a> .

### About Music Play

Question	Answer
<b>The MCi500H is connected to a home network and music skips during play (from any source including HD), what do I do?</b>	<ul style="list-style-type: none"><li>• Ensure that the network router is turned on.</li><li>• Ensure that the network settings are correct for the selected network (see user manual section 'Connect to a home network').</li></ul>

Question	Answer
<p><b>I have followed all the steps in the user manual to connect the Wireless Micro Hi-Fi System to the home network, but the system is still not connected, what can I do?</b></p>	<p>On the Wireless Micro Hi-Fi System, press MENU, then select <b>[Information] &gt; [Wireless] &gt; [Wireless mode]</b>. Check that the Wireless Micro Hi-Fi System has been changed from Ad hoc mode to Infrastructure mode. Also check that the SSID, IP address, WEP key, or WPA key matches the setup of your wireless home network.</p> <ul style="list-style-type: none"> <li>• Try to change the SSID on your router to a more unique name to ensure that it is different from the SSID that your neighbors use for their router.</li> <li>• The Wireless Micro Hi-Fi System supports wireless and wired connection at the same time. There is a chance that your wireless IP address and your wired IP address are on the same subnet. This will confuse the device. Consider changing the DHCP range of your wireless router so that the wireless IP received by the device is on a different subnet from its wired IP address.</li> <li>• Try to change the channel of your home network settings on the router.</li> <li>• On your router, consider using a WPA key instead of a WEP key. When you use a WEP as your encryption key, set all 4 keys to be the same.</li> <li>• Ensure that the turbo mode of your wireless router is switched off, if your router has this function.</li> </ul>

## Need help?

### User Manual

See the user manual that came with your player.

### Online

Go to [www.philips.com/welcome](http://www.philips.com/welcome)

# Important

## Safety

Information for Europe:  
Know these safety symbols



The 'exclamation mark' calls attention to features for which you should carefully read the supplied literature to prevent operating and maintenance problems.

The 'lightning bolt' symbol indicates uninsulated components within the product that can cause an electric shock. To reduce the risk of fire or electric shock, do not expose the product to rain or moisture and do not place any objects filled with liquids, such as vases, on the product.

- ① Read these instructions.
- ② Keep these instructions.
- ③ Heed all warnings.
- ④ Follow all instructions.
- ⑤ Do not use this MCi500H near water.
- ⑥ Clean only with dry cloth.
- ⑦ Do not block any ventilation openings. Install in accordance with the manufacturer's instructions.
- ⑧ Do not remove the casing of this MCi500H.
- ⑨ Only use this MCi500H indoors. Do not expose the MCi500H to dripping / splashing water, rain or high humidity.
- ⑩ Keep this MCi500H away from direct sunlight, naked flames or heat.
- ⑪ Do not install near any heat sources such as radiators, heat registers, stoves, or other electrical equipment (including amplifiers).
- ⑫ Do not place any other electrical equipment on the MCi500H.

- ⑬ Do not place any sources of danger on the MCi500H (e.g. objects containing liquids, burning candles).
- ⑭ This product may include batteries. Please refer to safety and disposal instructions for batteries in this user manual.
- ⑮ This product may contain lead and mercury. Disposal of these materials may be regulated due to environmental considerations. Please refer to disposal instructions in this user manual.

### Hearing Safety



#### Listen at a moderate volume:

Using headphones at a high volume can impair your hearing. This product can produce sounds in decibel ranges that may cause hearing loss for a normal person, even for exposure less than a minute. The higher decibel ranges are offered for those that may have already experienced some hearing loss. Sound can be deceiving. Over time your hearing 'comfort level' adapts to higher volumes of sound. So after prolonged listening, what sounds 'normal' can actually be loud and harmful to your hearing. To guard against this, set your volume to a safe level before your hearing adapts and leave it there.

#### To establish a safe volume level:

Set your volume control at a low setting. Slowly increase the sound until you can hear it comfortably and clearly, without distortion

#### Listen for reasonable periods of time:

Prolonged exposure to sound, even at normally 'safe' levels, can also cause hearing loss.

Be sure to use your equipment reasonably and take appropriate breaks.

#### Be sure to observe the following guidelines when using your headphones.

Listen at reasonable volumes for reasonable periods of time. Be careful not to adjust the volume as your hearing adapts. Do not turn up the volume so high that you can't hear what's around you. You should use caution or temporarily discontinue use in potentially hazardous situations. Do not use headphones while operating a motorized vehicle, cycling, skateboarding, etc.; it may create a traffic hazard and is illegal in many areas.

# Environmental notices

## Class II equipment symbol



This symbol indicates that this product has a double insulation system.

## Modifications

Modifications not authorized by the manufacturer may void user's authority to operate this product.

## Disposal of product & packing material

Your product is designed and manufactured with high quality materials and components, which can be recycled and reused.



When this crossed-out wheeled bin symbol is attached to a product, it means the product is covered by the European Directive 2002/96/EC.

Please be informed about the local separate collection system for electrical and electronic products. Please act according to your local rules and do not dispose of your old product with your normal household waste. The correct disposal of your old product will help prevent potential negative consequences to the environment and human health.

All redundant packing material has been omitted. We have done our utmost to make the packaging easily separable into mono materials.

Please observe the local regulations regarding the disposal of packing materials.

## Battery disposal information

Batteries (including built-in rechargeable batteries) contain substances that may pollute the environment. Always hand the appliance in at an official collection point to remove any built-in batteries before you discard the appliance. All batteries must be disposed of at an official collection point.



# Information about the use of batteries:



## Caution

- Risk of leakage: Only use the specified type of batteries. Do not mix new and used batteries. Do not mix different brands of batteries. Observe correct polarity. Remove batteries from devices that are not in use for a longer period of time. Store batteries in a dry place.
- Risk of injury: Wear gloves when handling leaking batteries. Keep batteries out of reach of children and pets.
- Risk of explosion: Do not short circuit batteries. Do not expose batteries to excessive heat or throw them into the fire. Do not damage or disassemble batteries. Do not try to recharge non-rechargeable batteries.

CE 0984 R&TTE Directive 1999/5/EC

BE	✓	DK	✓	GR	✓	ES	✓	FR	✓
IE	✓	IT	✓	LU	✓	NL	✓	AT	✓
PT	✓	FI	✓	SE	✓	UK	✓	NO	✓
DE	✓	CH	✓	PL	✓	HU	✓	SK	✓
CZ	✓	CY	✓	IS	✓				



Be responsible  
Respect copyrights

Specifications are subject to change without notice.  
Trademarks are the property of Koninklijke Philips Electronics N.V. or their respective owners  
© 2009 Koninklijke Philips Electronics N.V.  
All rights reserved.  
[www.philips.com](http://www.philips.com)



Printed in China  
MCI500H\_12\_QSG\_V2.0  
wk9414