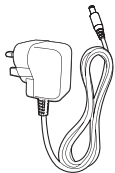
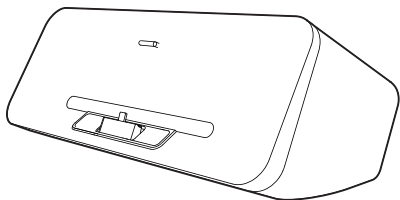


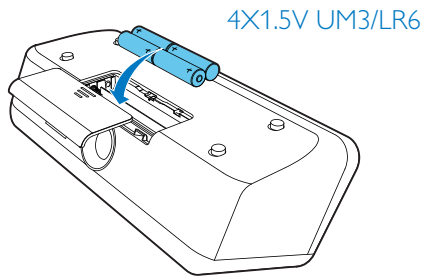
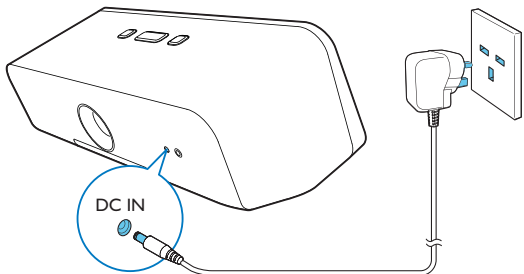


# Short User Manual

**PHILIPS**



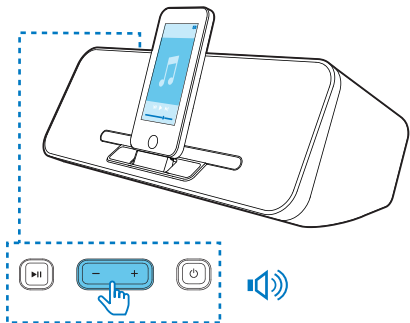
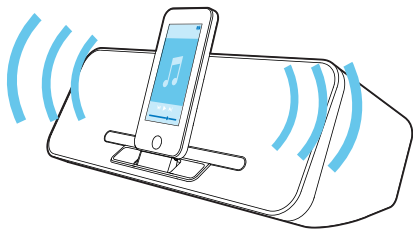
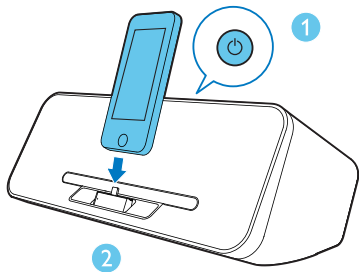
Before using your product, read all accompanying safety information.



iPod nano  
7th generation  
16GB

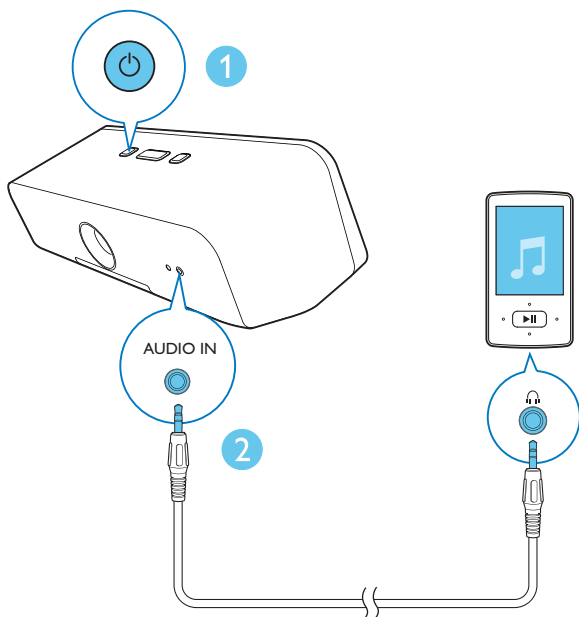
iPod touch  
5th generation  
32GB 64GB

iPhone 5  
16GB 32GB 64GB



You can only charge your iPod/iPhone when the docking speaker is powered by AC supply.





Read and understand all instructions before you use this product. If damage is caused by failure to follow the instructions, the warranty does not apply.

## Safety

### Warning

- Never remove the casing of this apparatus.
  - Never lubricate any part of this apparatus.
  - Never look into the laser beam inside this apparatus.
  - Never place this apparatus on other electrical equipment.
  - Keep this apparatus away from direct sunlight, naked flames or heat.
  - Ensure that you always have easy access to the power cord, plug or adaptor to disconnect the apparatus from the power.
- 
- The device shall not exposed to dripping or splashing.
  - Do no place any source of danger on the device (e.g. liquid filled objects, lit candles).
  - Where the plug of the Direct Plug-in Adapter is used as the disconnect device, the disconnect device shall remain readily operable.
  - Make sure that there is enough free space around the product for ventilation.
  - Only use attachments/accessories specified by the manufacturer.
  - Battery usage CAUTION – To prevent battery leakage which may result in bodily injury, property damage, or damage to the clock radio:
    - Install the battery correctly, + and - as marked on the clock radio.
    - Remove the battery when the clock radio is not used for a long time.
    - The battery shall not be exposed to excessive heat such as sunshine, fire or the like.

## Notice



This product complies with the radio interference requirements of the European Community.  
Any changes or modifications made to this device that are not expressly approved by Philips Consumer Lifestyle may void the user's authority to operate the equipment.



Your product is designed and manufactured with high quality materials and components, which can be recycled and reused.



When this crossed-out wheeled bin symbol is attached to a product it means that the product is covered by the European Directive 2002/96/EC.  
Please inform yourself about the local separate collection system for electrical and electronic products.  
Please act according to your local rules and do not dispose of your old products with your normal household waste. Correct disposal of your old product helps to prevent potential negative consequences for the environment and human health.



Your product contains batteries covered by the European Directive 2006/66/EC, which cannot be disposed with normal household waste. Please inform yourself about the local rules on separate collection of batteries because correct disposal helps to prevent negative consequences for the environment and human health.

### Environmental information

All unnecessary packaging has been omitted. We have tried to make the packaging easy to separate into three materials: cardboard (box), polystyrene foam (buffer) and polyethylene (bags, protective foam sheet.)  
Your system consists of materials which can be recycled and reused if disassembled by a specialized company. Please observe the local regulations regarding the disposal of packaging materials, exhausted batteries and old equipment.



The making of unauthorized copies of copy-protected material, including computer programs, files, broadcasts and sound recordings, may be an infringement of copyrights and constitute a criminal offence. This equipment should not be used for such purposes.



“Made for iPod” and “Made for iPhone” mean that an electronic accessory has been designed to connect specifically to iPod or iPhone respectively, and has been certified by the developer to meet Apple performance standards. Apple is not responsible for the operation of this device or its compliance with safety and regulatory standards. Please note that the use of this accessory with iPod or iPhone may affect wireless performance.  
iPod and iPhone are trademarks of Apple Inc., registered in the U.S. and other countries. Class II equipment symbol



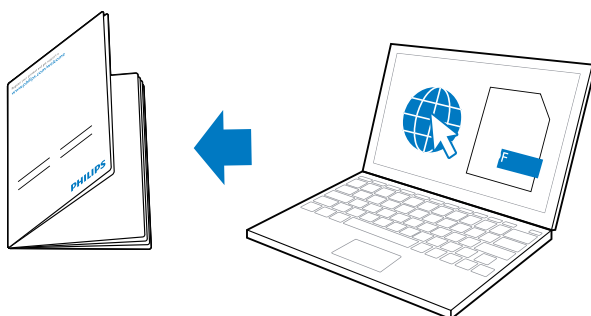
This symbol indicates that the apparatus has a double insulation system.

### Note

- The type plate is located on the bottom of the apparatus.

## Specifications

Rated Output Power	2 x 4 W RMS
Power supply	Model: KSAS0150590200HK ;
- AC Power	Input: 100-240 V ~, 50/60Hz, 0.4A; Output: 5.9 V === 2 A
- Battery	4 x AA (LR6) batteries
Operation Power Consumption	<10.5 W
Standby Power Consumption	<0.5 W
Max. load for iPod/iPhone	5 V === 1 A
Dimensions	
- Main Unit (W x H x D)	300 x 119 x 164 mm
Weight	
- Main Unit	1.45 kg



To get the detailed instructions for use, visit [www.philips.com/support](http://www.philips.com/support).

