

Quick Start Guide

Step A *Setup*

Step B *Enjoy*

What's in the Box?

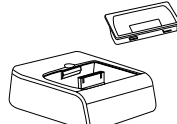
You should find these items upon opening the box.



User Manual



Quick Start Guide



1 dock & 8 Dock
Adapters for iPod



AM Antenna



Remote Control



Pull out the insulation
plastic sheet.



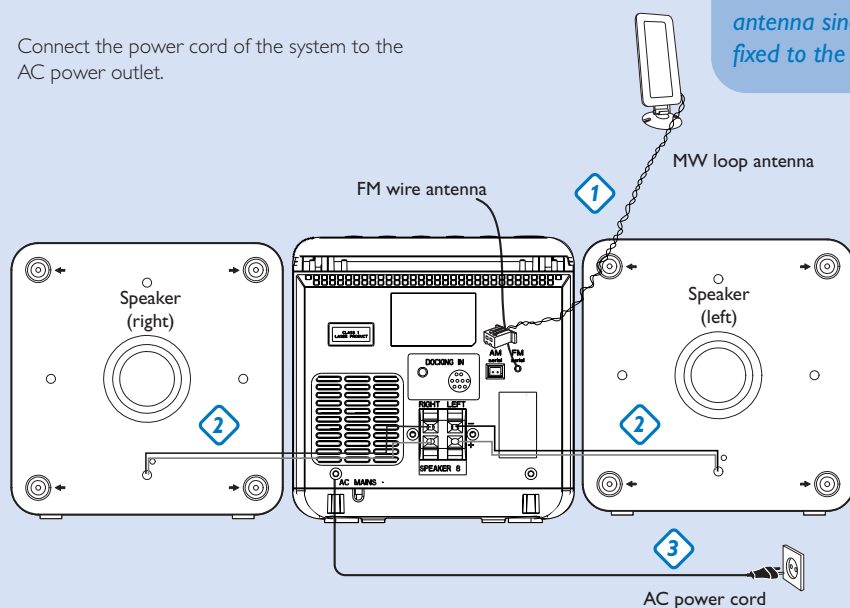
PHILIPS

Connection

- 1** For radio reception, connect the supplied AM antenna to the **MW aerial** terminal.
- 2** Connect the speaker wires to the **SPEAKERS** terminals.
- 3** Connect the power cord of the system to the AC power outlet.

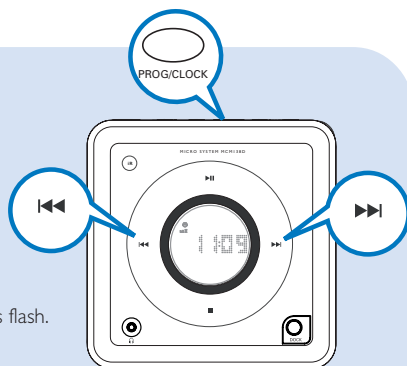
Tip

It is unnecessary to connect the FM pigtail antenna since it is fixed to the main unit.



Setting the clock

- 1** In standby mode, press **PROG/CLOCK** button. The clock digits for the hours flash.
- 2** Press **◀◀/▶▶** to set the hours.
- 3** Press **PROG/CLOCK** again. The clock digits for the minutes flash.
- 4** Press **◀◀/▶▶** to set the minutes.
- 5** Press **PROG/CLOCK** to confirm the time.

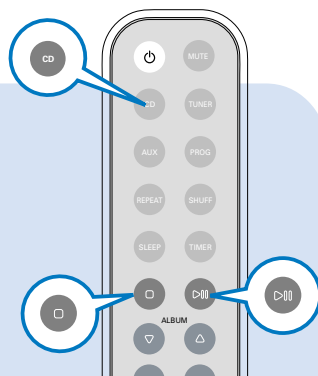


Step B

Enjoy

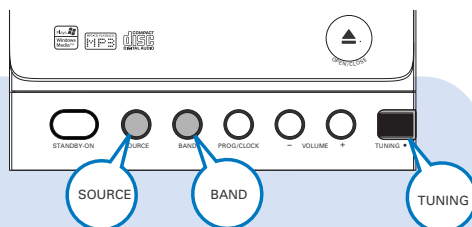
Playing a disc

- 1 Select **CD** source.
- 2 Press **OPEN•CLOSE** on the top of the system to open the CD door.
- 3 Insert a disc with the printed side facing up and press down on **OPEN•CLOSE** to close the CD door.
- 4 Press **▶ ||** to start playback.
- 5 Press **■** to stop playback.



Listening to radio

- 1 Select **TUNER** source.
- 2 Press **BAND** (**TUNER** on the remote control) once or more to select your waveband.
- 3 Turn **TUNING** ● to tune to a station.



Tip

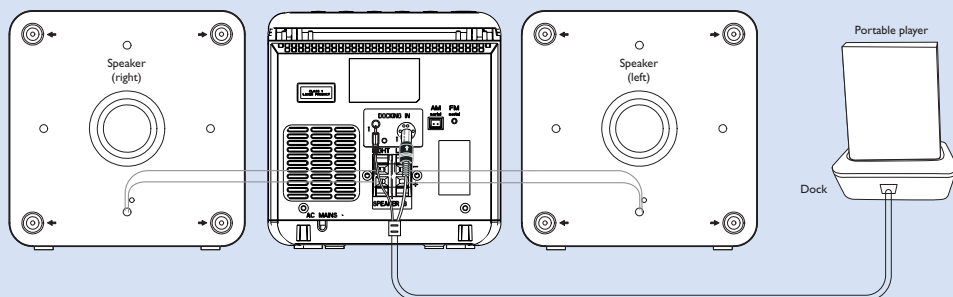
Detailed playback features and additional functions are described in the accompanied owner's manual.

Notes for the remote control:

- First, select the source you wish to control by pressing one of the source select keys on the remote control (CD or TUNER, for example).
- Then select the desired function (▶||, ◀, ▶ for example).

Playing iPod using the dock

- 1 Select the correct dock adaptor supplied, then snap the adaptor into the correct dock connector (iPod) to provide a snug fit for the player.
 - The indication on the adaptor's back fits specific iPod player.
- 2 Correctly place your player in the correct dock connector:
- 3 Connect the cables of the dock to **DOCK IN** jacks on the main set correspondingly.
- 4 Press **SOURCE** repeatedly or on the set (or **DOCK** on the remote) to select DOCK source.
 - The connected player will play automatically.



Tip

Refer to the user manual supplied for detailed descriptions of “Compatible portable player”, “Selecting the correct dock adaptor”, “Installing the dock adaptor”, and the important notes for dock operation.

