

# Always there to help you

Register your product and get support at  
[www.philips.com/support](http://www.philips.com/support)



AT10



## User manual

# PHILIPS



# Contents

<b>1</b>	<b>Important</b>	<b>2</b>
<b>2</b>	<b>Your Portable Speaker</b>	<b>3</b>
	Introduction	3
	What's in the box	3
	Overview of the product	4
<b>3</b>	<b>Get started</b>	<b>5</b>
	Power supply	5
	Turn on or off	5
	Select a source	6
<b>4</b>	<b>Play</b>	<b>7</b>
	Play from Bluetooth-enabled devices	7
	Play from an SD card or USB device	7
	Listen to FM radio	8
	Play from an external device	9
	Adjust volume	9
<b>5</b>	<b>Product information</b>	<b>10</b>
	Specifications	10
	USB playability information	10
<b>6</b>	<b>Troubleshooting</b>	<b>12</b>
	About Bluetooth device	12
<b>7</b>	<b>Notice</b>	<b>13</b>
	Compliance	13
	Care of the environment	13
	Trademark notice	14

# 1 Important



## Warning

- Never remove the casing of this product.
- Never lubricate any part of this product.
- Never place this product on other electrical equipment.
- Keep this product away from direct sunlight, naked flames or heat.

- Read these instructions.
- Follow all instructions.
- Do not use this apparatus near water.
- Do not block any ventilation openings. Install in accordance with the manufacturer's instructions.
- Do not install near any heat sources such as radiators, heat registers, stoves, or other apparatus (including amplifiers) that produce heat.
- Only use attachments/accessories specified by the manufacturer.
- Refer all servicing to qualified service personnel. Servicing is required when the apparatus has been damaged in any way, such as liquid has been spilled or objects have fallen into the apparatus, the apparatus has been exposed to rain or moisture, does not operate normally, or has been dropped.
- The battery shall not be exposed to excessive heat such as sunshine, fire or the like.
- Apparatus shall not be exposed to dripping or splashing.
- Do not place any sources of danger on the apparatus (e.g. liquid filled objects, lighted candles).



## Note

- The type plate is located on the bottom of the apparatus.

## 2 Your Portable Speaker

Congratulations on your purchase, and welcome to Philips! To fully benefit from the support that Philips offers, register your product at [www.philips.com/welcome](http://www.philips.com/welcome).

---

### Introduction

With this speaker, you can:

- listen to FM radio; and
- enjoy audio from SD/SDHC card, USB devices, Bluetooth-enabled devices, and other external devices.

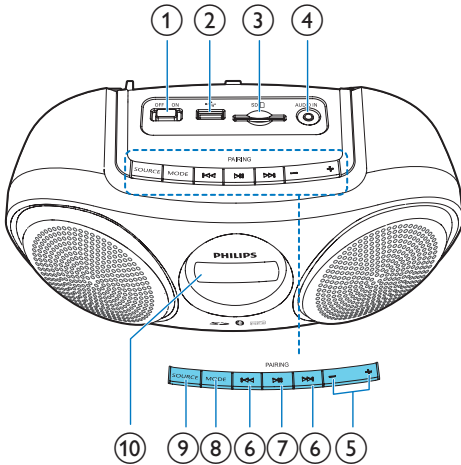
---

### What's in the box

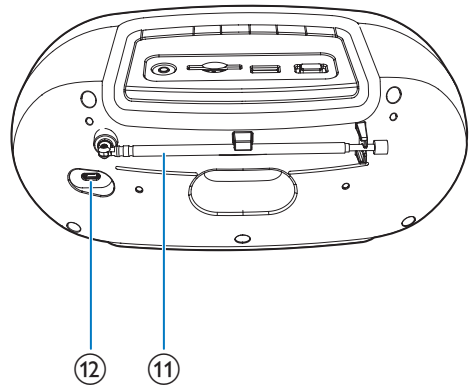
Check and identify the contents of your package:

- Main unit
- USB cable for charging
- Short user manual
- Safety & notice leaflet

## Overview of the product



- ① **OFF/ON switch**
  - Turn the product on or off.
- ②
  - Connect a USB storage device.
- ③ **SD**
  - Connect an SD/SDHC card.
- ④ **AUDIO IN**
  - Connect an external audio device.
- ⑤ **-/+**
  - Adjust volume.
- ⑥ **⏮ / ⏭**
  - Select a track.
  - Search within play.
  - Tune to FM radio stations.
- ⑦ **⏸ / PAIRING**
  - In SD, USB, or Bluetooth mode, press to pause or resume play.
  - In Bluetooth mode, press and hold for three seconds to disconnect Bluetooth connection or enter pairing mode.
  - In FM mode, press and hold for two seconds to store FM radio stations automatically.
  - In FM mode, press to select a preset radio station.



- ⑧ **MODE**
  - Select a repeat or shuffle play mode.
- ⑨ **SOURCE**
  - Select an audio source.
- ⑩ **Display panel**
  - Show current status.
- ⑪ **FM antenna**
  - Improve FM radio reception.
- ⑫ **DC 5V**
  - Recharge the built-in battery.

# 3 Get started

Always follow the instructions in this chapter in sequence.

If you contact Philips, you will be asked for the model and serial number of this apparatus. The model number and serial number are on the bottom of the apparatus. Write the numbers here:

Model No. \_\_\_\_\_  
Serial No. \_\_\_\_\_

## Power supply

The product is operated on the built-in rechargeable battery.

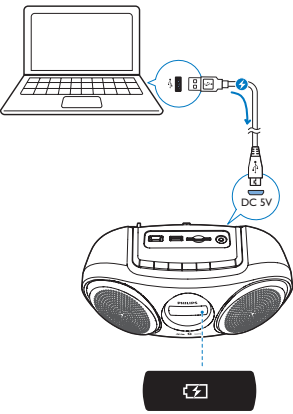
### Note


- Rechargeable battery has a limited number of charge cycles. Battery life and number of charge cycles vary by use and settings.

### To recharge the built-in battery:

Connect the supplied USB cable to:

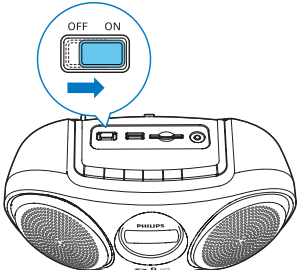
- the **DC 5V** socket on the back of the product.
- the USB socket on a computer.



Battery status	Battery icon (  ) behavior
Low battery	Flashing
While charging	Solid on
Fully charged or charging stopped	Off

## Turn on or off

- To turn the product on, slide the **OFF/ON** switch to the right.  
↳ The product switches to the last selected source.



- To turn the product off, slide the switch to the left.

## Switch to ECO standby mode

In SD, USB, Audio-in, or Bluetooth mode, the product switches to ECO standby mode automatically in the following situations:

- Music playback is stopped for 15 minutes;
- There is no Micro SD card, USB device or Audio-in cable connected for 15 minutes; or
- Bluetooth connection is disconnected for 15 minutes.

### To return to the SD/USB/Audio-in/Bluetooth mode:

- Press **▶||** to resume playback; or
- Slide the switch to turn the product off first, then turn it on.

---

## Select a source

Press **SOURCE** repeatedly to select an audio source: FM tuner, USB, SD card, Bluetooth, or AUX.



## 4 Play

### Play from Bluetooth-enabled devices

With this product, you can listen to audio from Bluetooth-enabled devices.

#### Connect a device



##### Note

- Make sure that your Bluetooth device is compatible with this product.
- Before pairing a device with this product, read its user manual for Bluetooth compatibility.
- The product can memorize a maximum of 4 paired devices. The fifth connected device will replace the first one.
- Make sure that Bluetooth function is enabled on your device, and your device is set as visible to all other Bluetooth devices.
- Any obstacle between this product and a Bluetooth device can reduce the operational range.
- Keep away from any other electronic device that may cause interference.
- The operational range between this product and a Bluetooth device is approximately 10 meters (30 feet).

- 1 Press **SOURCE** repeatedly to select Bluetooth source.  
↳ **[bt]** flashes on the display.
- 2 Press and hold **PAIRING** for 3 seconds to enter Bluetooth pairing mode.
- 3 On your Bluetooth device, enable Bluetooth and search for Bluetooth devices (refer to the user manual of the device).
- 4 When **[Philips AT10]** is displayed on your device, select it to start pairing and connection. If necessary, enter default password "0000".  
↳ After successful pairing and connection, the product beeps twice, and **[bt]** stops flashing.

#### To disconnect the Bluetooth-enabled device:

- Press and hold **PAIRING** for 3 seconds;
- Disable Bluetooth on your device; or
- Move the device beyond the communication range.  
↳ The product beeps twice, and **[bt]** begins to flash.

#### To reconnect the Bluetooth-enabled device:

- When this product enters Bluetooth mode, it will reconnect the last connected device automatically; or
- On your Bluetooth device, select "**Philips AT10**" on your Bluetooth menu to start connection.

#### To connect another Bluetooth-enabled device:

- 1 Press and hold **PAIRING** for 3 seconds to disconnect the currently connected device.  
↳ The product enters Bluetooth pairing mode.
- 2 Connect another Bluetooth device.

### Play from Bluetooth device

After successful Bluetooth connection, play audio on the Bluetooth device.

- ↳ Audio streams from your Bluetooth device to the product.

### Play from an SD card or USB device



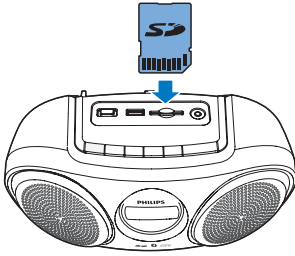
##### Note

- Make sure that the USB storage device or SD card contains playable audio content.

#### Play from an SD card

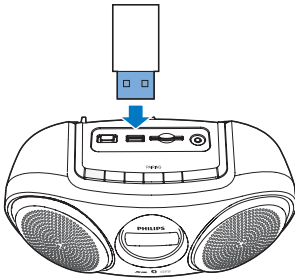
- 1 Press **SOURCE** repeatedly to select the SD card source.  
↳ **[SD]** is displayed.

- 2 Insert an SD/SDHC card into the card slot.  
 ↳ Play starts automatically.



## Play from a USB storage device

- 1 Press **SOURCE** repeatedly to select the USB source.  
 ↳ [USB] is displayed.
- 2 Insert the USB device into the socket.  
 ↳ Play starts automatically.



## Control play

In USB or SD mode, follow the instructions below to control play.

Button	Function
⏮ / ⏭	Press to skip to the previous or next track. Press and hold to fast forward or fast reverse the track during playback, then release to resume play.
⏸	Press to start, pause, or stop play.

Button	Function
MODE	Press repeatedly to select a play mode: <ul style="list-style-type: none"> <li>• [🔁]: Play the current track repeatedly.</li> <li>• [ALL]: Play all tracks repeatedly.</li> <li>• [🔀]: Play all tracks randomly.</li> </ul> To return to normal play mode, press <b>MODE</b> repeatedly until the repeat and shuffle icons disappear.

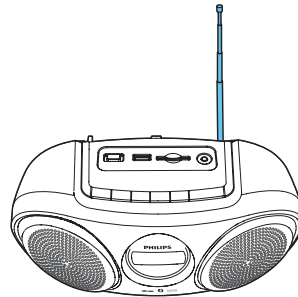
## Listen to FM radio

### Tune to FM radio stations

#### Note

- Keep the product away from other electronic devices to avoid radio interference.

- 1 Fully extend the FM antenna.



- 2 Press **SOURCE** repeatedly to select FM tuner source.
- 3 Press and hold ⏮ / ⏭ for two seconds.  
 ↳ The product tunes to a station with strong reception automatically.
- 4 Repeat step 3 to tune to more radio stations.

#### To tune to a station manually:

Press ⏮ / ⏭ repeatedly until you find better reception.

## Store FM radio stations automatically

### Note

- You can store a maximum of 20 preset radio stations.

In FM tuner mode, press and hold ►|| for two seconds.

- ➔ All available radio stations are stored automatically, then the first stored radio station is broadcast.

### Tip

- You can press ◀◀/▶▶ to stop auto scan.

## Store FM radio stations manually (only applicable to products with the last 10 digits of the serial number beyond 1633077076)

### Note

- You can store a maximum of 20 FM radio stations.

- In FM tuner mode, tune to an FM radio station.
- Press **MODE** to activate programming mode.
  - ➔ The preset number begins to blink.
- Press ►|| repeatedly to select a number.
- Press **MODE** again to confirm.
- Repeat steps 1 to 4 to store other stations.

### Note

- To remove a pre-stored station, store another station in its place.

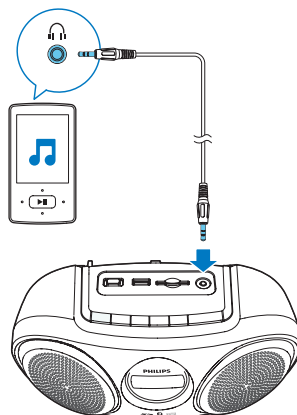
## Select a preset radio station

In tuner mode, press ►|| repeatedly to select a preset station.

## Play from an external device

With this product, you can listen to an external audio device such as an MP3 player:

- Press **SOURCE** repeatedly to select AUX source.
- Connect an audio input cable with a 3.5 mm connector on both ends to
  - the **AUDIO IN** socket on the product.
  - the headphone socket on an external device.
- Play audio on the device (refer to its user manual).



## Adjust volume

During play, press -/+ to increase or decrease volume.

### Tip

- You can press and hold -/+ for 2 seconds to increase or decrease volume continuously.

# 5 Product information

## Note

- Product information is subject to change without prior notice.

## Specifications

### Amplifier

Total Output Power	3 W
Frequency Response	60 -20000 Hz, $\pm 3$ dB
Signal to Noise Ratio	>70 dBA
Aux Input	800mV RMS 22kohm

### Tuner (FM)

Tuning Range	FM: 87.5-108 MHz
Tuning Grid	50 KHz
- Mono, 26dB S/N Ratio	<22 dBf
- Stereo, 46dB S/N Ratio	>43 dBf
Search Selectivity	>28 dBf
Total Harmonic Distortion	<2%
Signal to Noise Ratio	>55dB

### Bluetooth

Bluetooth Version	V3.0+EDR
Bluetooth Frequency Band	2.402GHz ~ 2.48GHz ISM Band
Bluetooth Distance	10 m (Free space)

### Speaker

Speaker Impedance	6 ohm
Speaker Driver	3" full range
Sensitivity	>82dB $\pm$ 3dB/m/W

### General information

Power Supply (through Micro USB socket)	5 V $\approx$ 600 mA
Built-in Battery (Li-polymer battery)	3.7 V, 1800 mAh
MP3 bit rates	32 - 320 kbps
Eco Standby Power Consumption	<0.5 W
Dimensions - Main Unit (W x H x D)	239 x 104 x 127 mm
Weight - Main Unit	0.6 kg

## USB playability information

### Compatible USB devices:

- USB flash memory (USB2.0)
- USB flash players (USB2.0)
- memory cards (requires an additional card reader to work with this unit; Some multi-card USB reader may not be supported.)

### Supported formats:

- USB or memory file format: FAT12, FAT16, FAT32 (sector size: 512 bytes)
- MP3 bit rate (data rate): 32-320 Kbps and variable bit rate
- Directory nesting up to a maximum of 8 levels
- Number of albums/ folders: maximum 99
- Number of tracks/titles: maximum 999
- File name in Unicode UTF8 (maximum length: 16 bytes)

**Unsupported formats:**

- Empty albums: an empty album is an album that does not contain MP3/WMA files, and is not be shown in the display.
- Unsupported file formats are skipped. For example, Word documents (.doc) or MP3 files with extension .dlf are ignored and not played.
- AAC, WAV, PCM audio files
- DRM protected WMA files (.wav, .m4a, .m4p, .mp4, .aac)
- WMA files in Lossless format

# 6 Troubleshooting



## Warning

- Never remove the casing of this device.

To keep the warranty valid, never try to repair the system yourself.

If you encounter problems when using this device, check the following points before requesting service. If the problem remains unsolved, go to the Philips Web page ([www.philips.com/support](http://www.philips.com/support)). When you contact Philips, make sure that the device is nearby and the model number and serial number are available.

### No power

- Recharge the battery.

### No sound or poor sound

- Adjust volume on this product.
- Adjust volume on the connected device.
- Check if you have selected the correct audio source.

### No response from the product

- Turn on the product.
- Recharge the battery.
- Turn the product off first, then turn it on to activate the product from standby mode.

### Poor radio reception

- Increase the distance between the product and other electrical appliances.
- Fully extend and adjust the position of the FM antenna.

### USB device not supported

- The USB device is incompatible with the unit. Try another one.

---

## About Bluetooth device

The audio quality is poor after connection with a Bluetooth-enabled device.

- The Bluetooth reception is poor. Move the device closer to this product or remove any obstacle between them.

**Fail to search out AT10 on your device for pairing.**

- Press and hold **PAIRING** for three seconds, and then try again.

**Cannot connect with the device.**

- The Bluetooth function of the device is not enabled. Refer to the user manual of the device for how to enable the function.
- This product is already connected with another Bluetooth-enabled device. Disconnect that device and then try again.

**The paired device connects and disconnects constantly.**

- The Bluetooth reception is poor. Move the device closer to this product or remove any obstacle between them.
- For some devices, Bluetooth connection may be deactivated automatically as a power-saving feature. This does not indicate any malfunction of this product.

# 7 Notice

Any changes or modifications made to this device that are not expressly approved by Gibson Innovations may void the user's authority to operate the equipment.

## Compliance

# CE 0890

Hereby, Gibson Innovations declares that this product is in compliance with the essential requirements and other relevant provisions of Directive 1999/5/EC. You can find the Declaration of Conformity on [www.philips.com/support](http://www.philips.com/support).

## Care of the environment

### Disposal of your old product and battery



Your product is designed and manufactured with high quality materials and components, which can be recycled and reused.



This symbol on a product means that the product is covered by European Directive 2012/19/EU.



This symbol means that the product contains a built-in rechargeable battery covered by European Directive 2013/56/EU which cannot be disposed of with normal household waste.

We strongly advise you to take your product to an official collection point or a Philips service centre to have a professional remove the rechargeable battery.

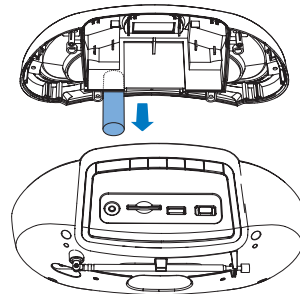
Inform yourself about the local separate collection system for electrical and electronic products and rechargeable batteries. Follow local rules and never dispose of the product and rechargeable batteries with normal household waste. Correct disposal of old products and rechargeable batteries helps prevent negative consequences for the environment and human health.



### Caution

- Removal of the built-in battery invalidates the warranty and may destroy the product.

Always bring your product to a professional to remove the built-in battery.



### Environmental information

All unnecessary packaging has been omitted. We have tried to make the packaging easy to separate into three materials: cardboard (box), polystyrene foam (buffer) and polyethylene (bags, protective foam sheet.) Your system consists of materials which can be recycled and reused if disassembled by a specialized company. Please observe the local regulations regarding the disposal of packaging materials, exhausted batteries and old equipment.

---

## Trademark notice



The Bluetooth® word mark and logos are registered trademarks owned by Bluetooth SIG, Inc. and any use of such marks by Gibson Innovations Limited is under license. Other trademarks and trade names are those of their respective owners.







Specifications are subject to change without notice.

2016 © Gibson Innovations Limited. All rights reserved.

This product has been manufactured by, and is sold under the responsibility of Gibson Innovations Ltd., and Gibson Innovations Ltd. is the warrantor in relation to this product. Philips and the Philips Shield Emblem are registered trademarks of Koninklijke Philips N.V. and are used under license.

AT10\_00\_UM\_V5.0

