



Philips  
Wireless TV headphones

40mm drivers/open-back  
Over-ear  
Breathable ear cushions

SHD8850



## High-res home cinema sound

Superior cinematic sound for your home

Philips SHD8850 wireless headphones immerse you in your own world of cinematic sound, with total freedom. Digital wireless connectivity provides interference-free, crystal clear sound, for the ultimate in personal home entertainment.

### Superior listening experience

- Superior cinematic sound from 40mm drivers
- High-res audio via wired connection

### Ease of use

- 20-hour runtime for long listening sessions
- Move freely with 30m wireless range
- Automatic on/off power
- Easy-to-use charging dock
- Optical and analog input fits all televisions

### Designed for long-wearing comfort

- Hammock auto-adjusts for optimal fit
- Breathable velour ear cushions for extensive comfort

**PHILIPS**

Wireless TV headphones  
40mm drivers/open-back Over-ear, Breathable ear cushions

SHD8850/12

## Highlights

### 20-hour runtime

With a 20-hour runtime, you can indulge in marathon viewing sessions without worrying about losing power.

### 30m wireless range

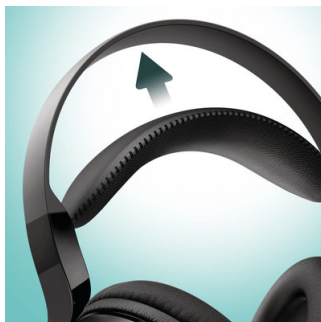


The 30m transmission range provides mobility and freedom to enjoy your music all around your home.

### Auto on/off

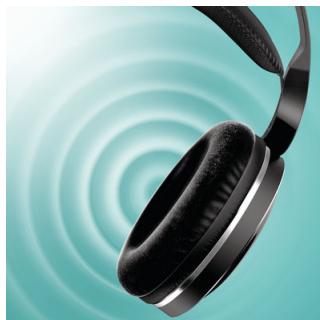
Philips SHD8850 headphones turn on automatically when you put them on your head. And when you're finished watching, they will automatically power off, to ensure power doesn't go to waste.

### Auto-adjustable fit



The self-adjusting lightweight hammock gives you the best fit for your head shape, while offering optimal comfort.

### Cinematic sound



Philips SHD8850's 40mm drivers are acoustically tuned to deliver superior cinematic sound.

### Easy charging



Place the headphones in the charging dock for easy charging.

### Fits all televisions

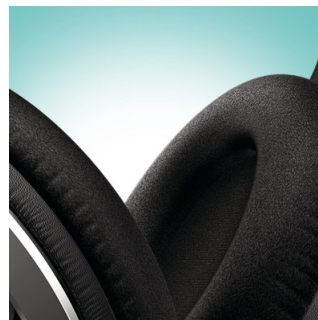
Equipped with an optical and analog input, Philips SHD8850 headphones are compatible.

### Hi-res audio



High-resolution audio offers the best in sound performance, reproducing the quality of original studio master recordings more faithfully than 16bit/44.1kHz CD formats. Using the audio cable provided, Philips SHD8850 wireless headphones support high-resolution audio, delivering uncompromising audio quality from your preferred devices - so you can get more out of your home entertainment.

### Velour ear cushions



Breathable velour ear cushions dissipate pressure and heat, ensuring extensive comfort for long wearing sessions.

# Specifications

## Sound

- Acoustic system: Open
- Magnet type: Neodymium
- Speaker diameter: 40 mm
- Signal/noise ratio: >75 dB
- Impedance: 24 Ohm
- Frequency range: 8-40,000Hz (when wired); 8-22,500 (wireless mode)

## Tuner/Reception/Transmission

- Modulation: FHSS
- Effective range: 30 m
- Channel selection: automatic
- Channel separation: >40 dB
- Number of channel: 15

## Convenience

- Automatic power off
- Battery low indication
- Operating time: ~20 hours
- Battery charging indicator
- Base station features: LED indicator

## Accessories

- AC/DC Adaptor: 5V/ 550mA DC
- Included accessories: Optical cable

## Power

- Power supply headphone: 2 x AAA 1.2V NiMH

rechargeable battery

- Power supply transmitter: 5V 550mA DC

## Product dimensions

- Product dimensions (W x H x D):  
17.6 x 22 x 9.5 cm
- Weight: 0.239 kg

## Packaging dimensions

- Packaging dimensions (W x H x D):  
24 x 32 x 12.5 cm
- Nett weight: 0.616 kg
- Gross weight: 0.998 kg
- Tare weight: 0.382 kg
- EAN: 69 25970 71235 4
- Type of shelf placement: Both
- Number of products included: 1
- Packaging type: Carton

## Outer Carton

- Outer carton (L x W x H): 39.5 x 26 x 32.5 cm
- Gross weight: 3.578 kg
- Tare weight: 1.73 kg
- GTIN: 1 69 25970 71235 1
- Number of consumer packagings: 3
- Nett weight: 1.848 kg

## Connectivity

- 3.5mm headphone jack
- Input connections: Digital optical line in



Issue date 2022-05-15

Version: 4.0.5

12 NC: 8670 001 42592  
EAN: 69 51613 99240 1

© 2022 Koninklijke Philips N.V.  
All Rights reserved.

Specifications are subject to change without notice.  
Trademarks are the property of Koninklijke Philips N.V.  
or their respective owners.

[www.philips.com](http://www.philips.com)