



MCM2250



- | | |
|--------------------------------|------------------------------|
| EN Short User Manual | ES Manual de usuario corto |
| CS Krátká uživatelská příručka | FI Lyhyt käyttöopas |
| DA Kort brugervejledning | FR Bref mode d'emploi |
| DE Kurzanleitung | HU Rövid használati útmutató |
| EL Σύντομο εγχειρίδιο χρήσης | IT Manuale dell'utente breve |

PHILIPS

2N Before using your product, read all accompanying safety information.

2P Před použitím výrobku si přečtěte příslušné bezpečnostní informace.

2A Før du bruger produktet, skal du læse alle medfølgende sikkerhedsoplysninger.

2B Lesen Sie vor der ersten Verwendung Ihres Produktes alle beiliegenden Sicherheitsinformationen.

2C Πριν χρησιμοποιήσετε τη συσκευή, διαβάστε όλες τις συνοδευτικές οδηγίες ασφαλείας.

2D Antes de utilizar el producto, lea toda la información de seguridad que se adjunta.

2E Lue kaikki mukana toimitetut turvallisuusohjeet ennen tuotteen käyttöä.

2F Avant d'utiliser votre produit, lisez toutes les informations sur la sécurité fournies.

2G A termék használatá elött olvassa el az alhoz tartozó összes biztonsági tudnivalót.

2H Prima di usare il prodotto, leggere tutte le relative informazioni sulla sicurezza.

3 In standby mode, press and hold **CLOCK** to enter the clock setting mode.

3A In standby mode, press and hold **CLOCK** to enter the clock setting mode.

3B In standby mode, press and hold **CLOCK** to enter the clock setting mode.

3C In standby mode, press and hold **CLOCK** to enter the clock setting mode.

3D In standby mode, press and hold **CLOCK** to enter the clock setting mode.

3E In standby mode, press and hold **CLOCK** to enter the clock setting mode.

3F In standby mode, press and hold **CLOCK** to enter the clock setting mode.

3G In standby mode, press and hold **CLOCK** to enter the clock setting mode.

3H In standby mode, press and hold **CLOCK** to enter the clock setting mode.

3I In standby mode, press and hold **CLOCK** to enter the clock setting mode.

3J In standby mode, press and hold **CLOCK** to enter the clock setting mode.

3K In standby mode, press and hold **CLOCK** to enter the clock setting mode.

4 In standby mode, press and hold **CLOCK** to enter the clock setting mode.

4A In standby mode, press and hold **CLOCK** to enter the clock setting mode.

4B In standby mode, press and hold **CLOCK** to enter the clock setting mode.

4C In standby mode, press and hold **CLOCK** to enter the clock setting mode.

4D In standby mode, press and hold **CLOCK** to enter the clock setting mode.

4E In standby mode, press and hold **CLOCK** to enter the clock setting mode.

4F In standby mode, press and hold **CLOCK** to enter the clock setting mode.

4G In standby mode, press and hold **CLOCK** to enter the clock setting mode.

4H In standby mode, press and hold **CLOCK** to enter the clock setting mode.

4I In standby mode, press and hold **CLOCK** to enter the clock setting mode.

4J In standby mode, press and hold **CLOCK** to enter the clock setting mode.

4K In standby mode, press and hold **CLOCK** to enter the clock setting mode.

4L In standby mode, press and hold **CLOCK** to enter the clock setting mode.

4M In standby mode, press and hold **CLOCK** to enter the clock setting mode.

4N In standby mode, press and hold **CLOCK** to enter the clock setting mode.

4O In standby mode, press and hold **CLOCK** to enter the clock setting mode.

4P In standby mode, press and hold **CLOCK** to enter the clock setting mode.

4Q In standby mode, press and hold **CLOCK** to enter the clock setting mode.

Specifications are subject to change without notice
© 2013 Koninklijke Philips Electronics N.V.
All rights reserved.

5 In standby mode, press and hold **CLOCK** to enter the clock setting mode.

5A In standby mode, press and hold **CLOCK** to enter the clock setting mode.

5B In standby mode, press and hold **CLOCK** to enter the clock setting mode.

5C In standby mode, press and hold **CLOCK** to enter the clock setting mode.

5D In standby mode, press and hold **CLOCK** to enter the clock setting mode.

5E In standby mode, press and hold **CLOCK** to enter the clock setting mode.

5F In standby mode, press and hold **CLOCK** to enter the clock setting mode.

5G In standby mode, press and hold **CLOCK** to enter the clock setting mode.

5H In standby mode, press and hold **CLOCK** to enter the clock setting mode.

5I In standby mode, press and hold **CLOCK** to enter the clock setting mode.

5J In standby mode, press and hold **CLOCK** to enter the clock setting mode.

5K In standby mode, press and hold **CLOCK** to enter the clock setting mode.

5L In standby mode, press and hold **CLOCK** to enter the clock setting mode.

5M In standby mode, press and hold **CLOCK** to enter the clock setting mode.

5N In standby mode, press and hold **CLOCK** to enter the clock setting mode.

5O In standby mode, press and hold **CLOCK** to enter the clock setting mode.

5P In standby mode, press and hold **CLOCK** to enter the clock setting mode.

5Q In standby mode, press and hold **CLOCK** to enter the clock setting mode.

6 In standby mode, press and hold **CLOCK** to enter the clock setting mode.

6A In standby mode, press and hold **CLOCK** to enter the clock setting mode.

6B In standby mode, press and hold **CLOCK** to enter the clock setting mode.

6C In standby mode, press and hold **CLOCK** to enter the clock setting mode.

6D In standby mode, press and hold **CLOCK** to enter the clock setting mode.

6E In standby mode, press and hold **CLOCK** to enter the clock setting mode.

6F In standby mode, press and hold **CLOCK** to enter the clock setting mode.

6G In standby mode, press and hold **CLOCK** to enter the clock setting mode.

6H In standby mode, press and hold **CLOCK** to enter the clock setting mode.

6I In standby mode, press and hold **CLOCK** to enter the clock setting mode.

6J In standby mode, press and hold **CLOCK** to enter the clock setting mode.

6K In standby mode, press and hold **CLOCK** to enter the clock setting mode.

6L In standby mode, press and hold **CLOCK** to enter the clock setting mode.

6M In standby mode, press and hold **CLOCK** to enter the clock setting mode.

6N In standby mode, press and hold **CLOCK** to enter the clock setting mode.

6O In standby mode, press and hold **CLOCK** to enter the clock setting mode.

6P In standby mode, press and hold **CLOCK** to enter the clock setting mode.

6Q In standby mode, press and hold **CLOCK** to enter the clock setting mode.

7 In standby mode, press and hold **CLOCK** to enter the clock setting mode.

7A In standby mode, press and hold **CLOCK** to enter the clock setting mode.

7B In standby mode, press and hold **CLOCK** to enter the clock setting mode.

7C In standby mode, press and hold **CLOCK** to enter the clock setting mode.

7D In standby mode, press and hold **CLOCK** to enter the clock setting mode.

7E In standby mode, press and hold **CLOCK** to enter the clock setting mode.

7F In standby mode, press and hold **CLOCK** to enter the clock setting mode.

7G In standby mode, press and hold **CLOCK** to enter the clock setting mode.

7H In standby mode, press and hold **CLOCK** to enter the clock setting mode.

7I In standby mode, press and hold **CLOCK** to enter the clock setting mode.

7J In standby mode, press and hold **CLOCK** to enter the clock setting mode.

7K In standby mode, press and hold **CLOCK** to enter the clock setting mode.

7L In standby mode, press and hold **CLOCK** to enter the clock setting mode.

7M In standby mode, press and hold **CLOCK** to enter the clock setting mode.

7N In standby mode, press and hold **CLOCK** to enter the clock setting mode.

7O In standby mode, press and hold **CLOCK** to enter the clock setting mode.

7P In standby mode, press and hold **CLOCK** to enter the clock setting mode.

7Q In standby mode, press and hold **CLOCK** to enter the clock setting mode.

Always there to help you

Register your product and get support at www.philips.com/welcome



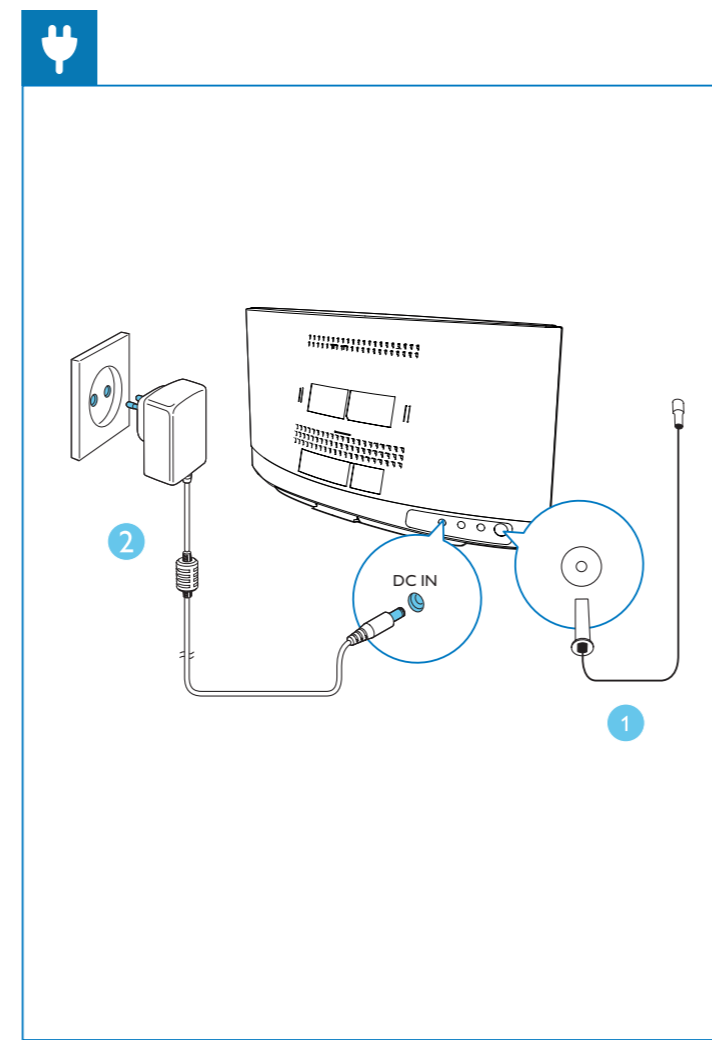
MCM2250



- NL Korte gebruikershandleiding
RU Краткое руководство пользователя
NO Kort brukerhåndbok
SK Stručný návod na používanie
PL Krótka instrukcja obsługi
SV Korfattard användarhandbok
PT Manual do utilizador resumido
RO Manual de utilizare pe scurt



Section 1: Safety and handling information. Includes icons for safe handling, warranty, and safety warnings. Text: Lees alle veiligheidsinformatie voordat u het product gebruikt.



Section 2: Power and standby modes. Includes a power button icon. Text: Stroomsparende standbymodus ON Standbymodus. ON Stroomsparende standbymodus Standbymodus.

Section 3: Power and standby modes in Spanish and French. Includes a power button icon. Text: Stroomsparende standbymodus ON Standbymodus.

Section 4: Power and standby modes in German, Italian, and Polish. Includes a power button icon. Text: Mod standby Eco FORNIT Mod standby.

Section 5: TV features and navigation. Includes icons for navigation, zoom, and picture modes. Text: Obi! När produkten har varit inaktív i 15 minuter väskar den automatiskt till det normala standbyläget.

Section 6: TV features and navigation. Includes a remote control icon and a diagram of the TV screen. Text: No! Houd in de stand-bymodus CLOCK ingedrukt om de modus voor het instellen van de klok te openen.

Section 7: TV features and navigation. Includes a remote control icon and a diagram of the TV screen. Text: No! Houd in de stand-bymodus CLOCK ingedrukt om de modus voor het instellen van de klok te openen.

Section 8: TV features and navigation. Includes a remote control icon and a diagram of the TV screen. Text: No! Houd in de stand-bymodus CLOCK ingedrukt om de modus voor het instellen van de klok te openen.

Section 9: TV features and navigation. Includes a remote control icon and a diagram of the TV screen. Text: No! Houd in de stand-bymodus CLOCK ingedrukt om de modus voor het instellen van de klok te openen.

Section 10: TV features and navigation. Includes a remote control icon and a diagram of the TV screen. Text: No! Houd in de stand-bymodus CLOCK ingedrukt om de modus voor het instellen van de klok te openen.

Section 11: Specifications and legal information. Includes Philips logo and a recycling symbol. Text: Specifications are subject to change without notice © 2013 Koninklijke Philips Electronics N.V.

Section 12: Specifications and legal information. Includes Philips logo and a recycling symbol. Text: Specifications are subject to change without notice © 2013 Koninklijke Philips Electronics N.V.

Section 13: Specifications and legal information. Includes Philips logo and a recycling symbol. Text: Specifications are subject to change without notice © 2013 Koninklijke Philips Electronics N.V.

Section 14: Specifications and legal information. Includes Philips logo and a recycling symbol. Text: Specifications are subject to change without notice © 2013 Koninklijke Philips Electronics N.V.

Section 15: Specifications and legal information. Includes Philips logo and a recycling symbol. Text: Specifications are subject to change without notice © 2013 Koninklijke Philips Electronics N.V.

Section 16: Specifications and legal information. Includes Philips logo and a recycling symbol. Text: Specifications are subject to change without notice © 2013 Koninklijke Philips Electronics N.V.

Section 17: TV features and navigation. Includes a remote control icon and a diagram of the TV screen. Text: No! Houd in de stand-bymodus CLOCK ingedrukt om de modus voor het instellen van de klok te openen.

Section 18: TV features and navigation. Includes a remote control icon and a diagram of the TV screen. Text: No! Houd in de stand-bymodus CLOCK ingedrukt om de modus voor het instellen van de klok te openen.

Section 19: TV features and navigation. Includes a remote control icon and a diagram of the TV screen. Text: No! Houd in de stand-bymodus CLOCK ingedrukt om de modus voor het instellen van de klok te openen.

Section 20: TV features and navigation. Includes a remote control icon and a diagram of the TV screen. Text: No! Houd in de stand-bymodus CLOCK ingedrukt om de modus voor het instellen van de klok te openen.

Section 21: TV features and navigation. Includes a remote control icon and a diagram of the TV screen. Text: No! Houd in de stand-bymodus CLOCK ingedrukt om de modus voor het instellen van de klok te openen.

Section 22: TV features and navigation. Includes a remote control icon and a diagram of the TV screen. Text: No! Houd in de stand-bymodus CLOCK ingedrukt om de modus voor het instellen van de klok te openen.

Section 23: TV features and navigation. Includes a remote control icon and a diagram of the TV screen. Text: No! Houd in de stand-bymodus CLOCK ingedrukt om de modus voor het instellen van de klok te openen.

Section 24: TV features and navigation. Includes a remote control icon and a diagram of the TV screen. Text: No! Houd in de stand-bymodus CLOCK ingedrukt om de modus voor het instellen van de klok te openen.

Section 25: TV features and navigation. Includes a remote control icon and a diagram of the TV screen. Text: No! Houd in de stand-bymodus CLOCK ingedrukt om de modus voor het instellen van de klok te openen.

Section 26: TV features and navigation. Includes a remote control icon and a diagram of the TV screen. Text: No! Houd in de stand-bymodus CLOCK ingedrukt om de modus voor het instellen van de klok te openen.

Section 27: TV features and navigation. Includes a remote control icon and a diagram of the TV screen. Text: No! Houd in de stand-bymodus CLOCK ingedrukt om de modus voor het instellen van de klok te openen.

Section 28: TV features and navigation. Includes a remote control icon and a diagram of the TV screen. Text: No! Houd in de stand-bymodus CLOCK ingedrukt om de modus voor het instellen van de klok te openen.

Section 29: TV features and navigation. Includes a remote control icon and a diagram of the TV screen. Text: No! Houd in de stand-bymodus CLOCK ingedrukt om de modus voor het instellen van de klok te openen.

Section 30: TV features and navigation. Includes a remote control icon and a diagram of the TV screen. Text: No! Houd in de stand-bymodus CLOCK ingedrukt om de modus voor het instellen van de klok te openen.

Section 31: TV features and navigation. Includes a remote control icon and a diagram of the TV screen. Text: No! Houd in de stand-bymodus CLOCK ingedrukt om de modus voor het instellen van de klok te openen.

Section 32: TV features and navigation. Includes a remote control icon and a diagram of the TV screen. Text: No! Houd in de stand-bymodus CLOCK ingedrukt om de modus voor het instellen van de klok te openen.

Section 33: TV features and navigation. Includes a remote control icon and a diagram of the TV screen. Text: No! Houd in de stand-bymodus CLOCK ingedrukt om de modus voor het instellen van de klok te openen.

Section 34: TV features and navigation. Includes a remote control icon and a diagram of the TV screen. Text: No! Houd in de stand-bymodus CLOCK ingedrukt om de modus voor het instellen van de klok te openen.

