

Always there to help you

Register your product and get support at
www.philips.com/welcome



AS360



User manual

PHILIPS

Contents

1	Important	2
	Safety	2
	Notice	2

2	Your Docking Speaker for Android™	4
	Introduction	4
	What's in the box	4
	Overview of the main unit	5

3	Get started	6
	Power supply	6
	Turn on	6

4	Play	7
	Dock and play	7
	Play audio through manual Bluetooth connection	8

5	Other features	10
	Play audio from an external device	10
	Charge your Android-powered device	10
	Charge non Android-powered device through the USB socket	10

6	Product information	11
	Specifications	11

7	Troubleshooting	12
----------	------------------------	-----------

1 Important

Safety

- Read these instructions.
- Keep these instructions.
- Heed all warnings.
- Follow all instructions.
- Do not use this apparatus near water.
- Clean only with dry cloth.
- Install in accordance with the manufacturer's instructions.
- Do not install near any heat sources such as radiators, heat registers, stoves, or other apparatus (including amplifiers) that produce heat.
- Protect the power cord from being walked on or pinched, particularly at plugs, convenience receptacles, and the point where they exit from the apparatus.
- Only use attachments/accessories specified by the manufacturer.
- Unplug this apparatus during lightning storms or when unused for long periods of time.
- Refer all servicing to qualified service personnel. Servicing is required when the apparatus has been damaged in any way, such as power-supply cord or plug is damaged, liquid has been spilled or objects have fallen into the apparatus, the apparatus has been exposed to rain or moisture, does not operate normally, or has been dropped.
- Battery usage CAUTION – To prevent battery leakage which may result in bodily injury, property damage, or damage to the unit:
 - Install all batteries correctly, + and - as marked on the unit.
 - Do not mix batteries (old and new or carbon and alkaline, etc.).

- Remove batteries when the unit is not used for a long time.
- Batteries (battery pack or batteries installed) shall not be exposed to excessive heat such as sunshine, fire or the like.
- Apparatus shall not be exposed to dripping or splashing.
- Do not place any sources of danger on the apparatus (e.g. liquid filled objects, lighted candles).
- Where the plug of the Direct Plugin Adapter is used as the disconnect device, the disconnect device shall remain readily operable.
- Use only power supplies listed in the user manual.



Warning

- Never remove the casing of this apparatus.
- Never lubricate any part of this apparatus.
- Never place this apparatus on other electrical equipment.

Notice

Any changes or modifications made to this device that are not expressly approved by WOOX Innovations may void the user's authority to operate the equipment.

CE 0890

This product complies with the requirement of the 1999/5/EC directive.

A copy of EC declaration of Conformity is available in the Portable Document Format (PDF) version of the user manual at www.philips.com/support.



Your product is designed and manufactured with high quality materials and components, which can be recycled and reused.



When this crossed-out wheeled bin symbol is attached to a product it means that the product is covered by the European Directive 2002/96/EC.

Please inform yourself about the local separate collection system for electrical and electronic products.

Please act according to your local rules and do not dispose of your old products with your normal household waste. Correct disposal of your old product helps to prevent potential negative consequences for the environment and human health.



Your product contains batteries covered by the European Directive 2006/66/EC, which cannot be disposed with normal household waste. Please inform yourself about the local rules on separate collection of batteries because correct disposal helps to prevent negative consequences for the environmental and human health.

Environmental information

All unnecessary packaging has been omitted. We have tried to make the packaging easy to separate into three materials: cardboard (box), polystyrene foam (buffer) and polyethylene (bags, protective foam sheet.)

Your system consists of materials which can be recycled and reused if disassembled by a specialized company. Please observe the local regulations regarding the disposal of packaging materials, exhausted batteries and old equipment.



The Bluetooth® word mark and logos are registered trademarks owned by Bluetooth SIG, Inc. and any use of such marks by WOOX Innovations is under license.



Note

- The type plate is located on the bottom of the apparatus.

2 Your Docking Speaker for Android™

Congratulations on your purchase, and welcome to Philips! To fully benefit from the support that Philips offers, register your product at www.philips.com/welcome.

Introduction

With this docking speaker, you can:

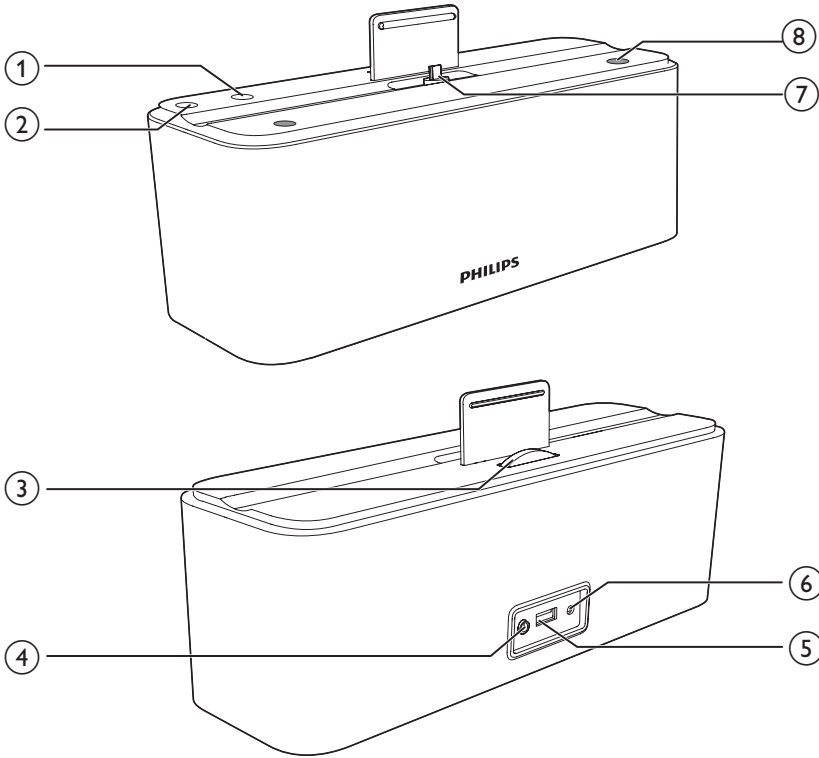
- enjoy audio from your Android-powered device or an external device;
- charge your device.

What's in the box

Check and identify the contents of your package:

- Main unit
- AC power adapter
- 3.5 mm audio in link cable
- Printing materials

Overview of the main unit



① 

- Bluetooth indicator;

② **POWER**

- Turn on/off the docking speaker; or switch the docking speaker to standby mode.

③ **Adjustment wheel**

- Adjust to stabilize your docked device.

④ **AUDIO IN**

- Connect an external audio device.

⑤ **CHARGING**

- Charge your non Android-powered device through USB cable.

⑥ **DC IN**

- Power supply socket.

⑦ **FlexiDock 2 (for Android-powered device)**

⑧ **-VOL +**

- Adjust volume.

3 Get started

Always follow the instructions in this chapter in sequence.

Power supply

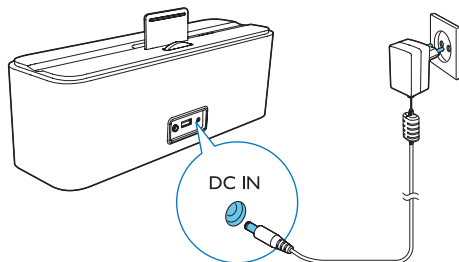
Either AC power or batteries can be used as power supply of this docking speaker.

Option 1: AC power

! Caution

- Risk of product damage! Ensure that the power voltage corresponds to the voltage printed on the back or underside of the docking speaker.
- Risk of electric shock! When you unplug the AC adapter, always pull the plug from the socket. Never pull the cord.

Connect the power adapter to the wall outlet.



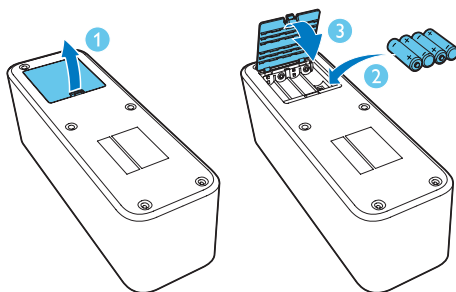
Option 2: Battery power

! Caution


- Risk of explosion! Keep batteries away from heat, sunshine, or fire. Never discard batteries in fire.

- 1 Open the battery compartment.
- 2 Insert 4 AA batteries with correct polarity (+/-) as indicated.

3 Close the battery compartment.



≡ Note

- Batteries contain chemical substances, so they should be disposed of properly.
- Batteries are for backup purpose. You can not play a docked device with the docking speaker in battery mode.
- When playing from a docked device, and the docking speaker is installed with batteries, if unplug the adapter, play will stop and the docking speaker will switch to standby mode. Press  to restart the docking speaker; and switch to Audio in/Bluetooth/USB mode.

Turn on

Press **POWER** to turn on the docking speaker:
↳ The LED lights in green.

Switch to standby mode

Press **POWER** again to switch the docking speaker to standby mode.
↳ The LED will turn off.

4 Play

With this docking speaker, you can enjoy audio from your devices.

Dock and play

Compatible with Android™

To make full use of your docking speaker, your Android-powered device should satisfy the following requirements:

- With Android operation system (version 4.2 and above);
- With a micro USB connector;
- Support Android Open Accessory (AOA).

For other devices with micro USB connector and Bluetooth function, you can still use the docking speaker to do the following:

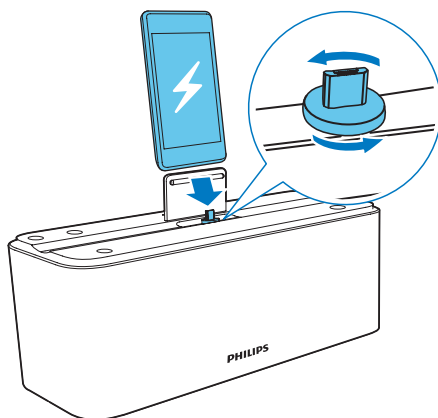
- Charge your Android-powered device through the dock;
- Charge your device through the **CHARGING** socket;
- Enjoy audio through Bluetooth.

Dock your Android-powered device

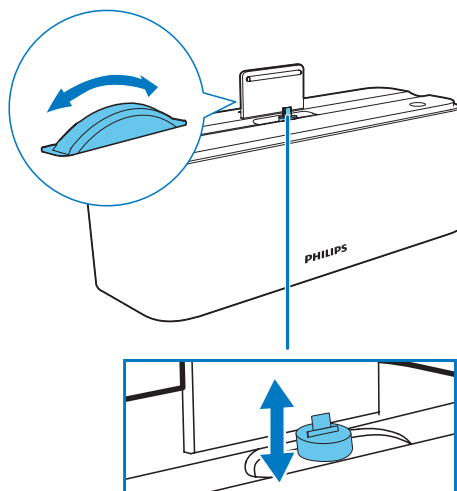
To play and charge your Android-powered device, you need to dock it in the docking speaker first.

- 1 Check the orientation of the micro USB connector on your Android-powered device. If your USB connector has a cover, flip it outwards.

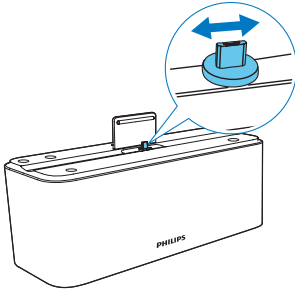
- 2 If necessary, rotate the USB connector on the docking speaker; and then place your Android-powered device onto the dock.



- 3 Adjust the wheel on the back of the connector to stabilize the device.



- Slide the connector to place your device in the middle of the docking speaker.



Tip

- If the micro USB connector is located at the top, screen auto-rotation is available.

Listen to your Android-powered device

After placing your Android-powered device into the dock, you can enjoy music through the docking speaker.

- Press ϕ to turn on the docking speaker.
- Play from your Android-powered device.
 - ↳ You can now enjoy music through the docking speaker.

Tip

- Press **-VOL +** to adjust volume.
- You can not play a docked device with the docking speaker in battery mode.

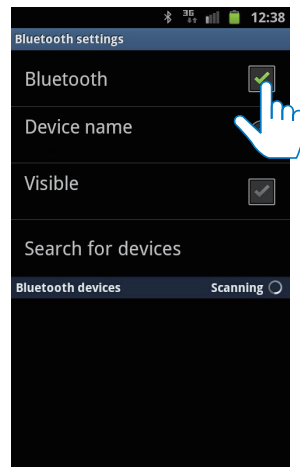
Play audio through manual Bluetooth connection

The docking speaker uses Bluetooth wireless technology to stream music from your portable device to the system.

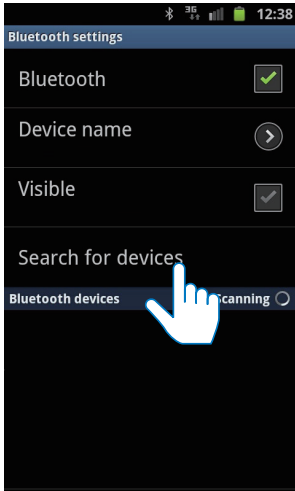
Note

- Your Bluetooth device should be with Bluetooth software of version 2.1 or above.
- Before you connect a Bluetooth device to this docking speaker, familiarize yourself with the Bluetooth capabilities of the device.
- Keep this docking speaker away from other electronic devices that may cause interference.

- On your docking speaker, press ϕ to activate Bluetooth.
 - ↳ The Bluetooth indicator \star blinks.
- Turn on Bluetooth function of your Bluetooth device.
 - Different devices may have different way to activate Bluetooth.



- 3 Scan Bluetooth devices that can pair with your device.



- 4 When **[PHILIPS AS360]** (Philips AS360) is displayed on your device, select it to start connection.
- ↳ If connection is successful, you will hear double beep confirmation.
- 5 Play audio with the media player of your device.
- ↳ The audio comes out through the docking speaker.



Tip

- The effective operation range between the docking speaker and the paired device is approximately 10 meters (30 feet).
- Any obstacle between the speaker and the device can reduce the operational range.

5 Other features



Note

- It is not guaranteed that all USB cables work with this docking speaker.
- Charging is not available in battery mode.

Play audio from an external device

You can listen to audio from an external device through this docking speaker:

- 1 Connect the 3.5mm audio in cable (supplied) to:
 - the **AUDIO IN** socket.
 - the headphone socket of an external device.
- 2 Play audio on the external device (see the device's user manual).

Charge your Android-powered device

When the docking speaker is connected to power, the docked device starts charging automatically.



Tip

- This function is available for all Android-powered devices that have a micro USB connector.
- Charging is not available in battery mode.

Charge non Android-powered device through the USB socket

- Connect a USB cable (not supplied) to:
- the **CHARGING** socket at the back of the docking speaker.
 - the micro USB socket on your device.

6 Product information

Note

- Product information is subject to change without prior notice.

Specifications

AC Power	OH-1028A0903000U-VDE (Philips) Input: 100-240V~, 50/60Hz, 800mA MAX; Output: 9V === 3A
Battery	4 x AA
Operation Power Consumption	< 18W
Eco Standby Power Consumption	< 0.5W
Dimensions - Main Unit (W x H x D)	260 X 90 X 95 mm
Weight - Main Unit	1.18 kg
Charging:	
- through micro USB connector	1A
- through CHARGE socket	1A
Speaker impedance	4 ohm

7 Troubleshooting



Warning

- Never remove the casing of this device.

To keep the warranty valid, never try to repair the system yourself.

If you encounter problems when using this device, check the following points before requesting service. If the problem remains unsolved, go to the Philips Web page (www.philips.com/support). When you contact Philips, make sure that the device is nearby and the model number and serial number are available.

No power

- Make sure that the AC power adaptor of the docking speaker is connected properly.
- Make sure that there is power at the AC outlet.
- Make sure that the batteries are inserted correctly.
- If the docking speaker is installed with batteries, and the AC power adapter is connected to the docking speaker; when unplug the adapter; the docking speaker will switch to standby mode. Press ϕ to restart the docking speaker.

No response from docked device

- The "dock and play" function only supports Android-powered devices with an operation system of version 4.2 or above.
- The "dock and play" function is not available in battery mode.

No sound or poor sound

- Adjust the volume of the docking speaker.
- Adjust the volume of your Android device.

No response from the unit

- Disconnect and reconnect the AC power plug; then turn on the docking speaker again.



Specifications are subject to change without notice.
2013 © WOOX Innovations Limited. All rights reserved.
This product was brought to the market by WOOX Innovations Limited or one of its affiliates, further referred to in this document as WOOX Innovations, and is the manufacturer of the product. WOOX Innovations is the warrantor in relation to the product with which this booklet was packaged. Philips and the Philips Shield Emblem are registered trademarks of Koninklijke Philips N.V.

