

Always there to help you

Register your product and get support at
www.philips.com/support

DC395



User manual

PHILIPS

Contents

1	Important	2
	Safety	2
	Notice	3

2	Your Docking Entertainment System	4
	Introduction	4
	What's in the box	4
	Overview of the main unit	5

3	Get started	7
	Install batteries	7
	Connect power	7
	Turn on	8
	Set time and date	8

4	Play	9
	Play from iPod/iPhone/iPad	9
	Play from Bluetooth-enabled devices	10
	Play from an external device	10

5	Listen to radio	11
	Tune to a radio station	11
	Program radio stations	11

6	Other features	12
	Set the alarm timer	12
	Set the sleep timer	13
	Adjust display brightness	13

7	Adjust sound	14
	Adjust volume level	14
	Select a sound effect	14

8	Product information	15
	Specifications	15

9	Troubleshooting	16
----------	------------------------	-----------

1 Important

Safety

Important Safety Instructions

- ① Read these instructions.
- ② Keep these instructions.
- ③ Heed all warnings.
- ④ Follow all instructions.
- ⑤ Do not use this apparatus near water.
- ⑥ Clean only with dry cloth.
- ⑦ Do not block any ventilation openings. Install in accordance with the manufacturer's instructions.
- ⑧ Do not install near any heat sources such as radiators, heat registers, stoves, or other apparatus (including amplifiers) that produce heat.
- ⑨ Protect the power cord from being walked on or pinched, particularly at plugs, convenience receptacles, and the point where they exit from the apparatus.
- ⑩ Only use attachments/accessories specified by the manufacturer.
- ⑪ Use only with the cart, stand, tripod, bracket, or table specified by the manufacturer or sold with the apparatus. When a cart is used, use caution when moving the cart/apparatus combination to avoid injury from tip-over.



- ⑫ Unplug this apparatus during lightning storms or when unused for long periods of time.
- ⑬ Refer all servicing to qualified service personnel. Servicing is required when the apparatus has been damaged in any way, such as power-supply cord or plug is damaged, liquid has been spilled or objects have fallen into the apparatus, the apparatus has been exposed to rain or moisture, does not operate normally, or has been dropped.
- ⑭ **Battery usage CAUTION** – To prevent battery leakage which may result in bodily injury, property damage, or damage to the unit:
 - Install all batteries correctly, + and - as marked on the unit.
 - Do not mix batteries (old and new or carbon and alkaline, etc.).
 - Remove batteries when the unit is not used for a long time.
- ⑮ Apparatus shall not be exposed to dripping or splashing.
- ⑯ Do not place any sources of danger on the apparatus (e.g. liquid filled objects, lighted candles).
- ⑰ Where the MAINS plug or an appliance coupler is used as the disconnect device, the disconnect device shall remain readily operable.



Warning

- Never remove the casing of this apparatus.
- Never lubricate any part of this apparatus.
- Never place this apparatus on other electrical equipment.
- Keep this apparatus away from direct sunlight, naked flames or heat.
- Ensure that you always have easy access to the power cord, plug or adaptor to disconnect the apparatus from the power.
- Use only power supplies listed in the user manual.

Notice

Any changes or modifications made to this device that are not expressly approved by Gibson Innovations may void the user's authority to operate the equipment.

This product has been manufactured by, and is sold under the responsibility of Gibson Innovations Ltd., and Gibson Innovations Ltd. is the warrantor in relation to this products. Philips and the Philips' Shield Emblem are registered trademarks of Koninklijke Philips N.V. and are used under license from Koninklijke Philips N.V.

Specifications are subject to change without notice. Gibson Innovations reserves the right to change products at any time without being obliged to adjust earlier supplies accordingly.

Disposal of your old product and battery

Your product is designed and manufactured with high quality materials and components, which can be recycled and reused. Never dispose of your product with other household waste. Please inform yourself about the local rules on the separate collection of electrical and electronic products and batteries. The correct disposal of these products helps prevent potentially negative consequences on the environment and human health. Your product contains batteries, which cannot be disposed of with normal household waste. Please inform yourself about the local rules on separate collection of batteries. The correct disposal of batteries helps prevent potentially negative consequences on the environment and human health. Please visit www.recycle.philips.com for additional information on a recycling center in your area.



"Made for iPod," "Made for iPhone," and "Made for iPad" mean that an electronic accessory has been designed to connect specifically to iPod, iPhone, or iPad, respectively, and has been certified by the developer to meet Apple performance standards. Apple is not responsible for the operation of this device or its compliance with safety and regulatory standards. Please note that the use of this accessory with iPod, iPhone, or iPad may affect wireless performance.

iPod and iPhone are trademarks of Apple Inc., registered in the U.S. and other countries. iPad is a trademark of Apple Inc.

Bluetooth

The Bluetooth® word mark and logos are registered trademarks owned by Bluetooth SIG, Inc. and any use of such marks by Gibson is under license. Other trademarks and trade names are those of their respective owners.

Class II equipment symbol:



CLASS II apparatus with double insulation, and no protective earth provided.

Note

- The type plate is located on the bottom of the unit.

2 Your Docking Entertainment System

Congratulations on your purchase, and welcome to Philips! To fully benefit from the support that Philips offers, register your product at www.philips.com/welcome.

Introduction

With this unit, you can:

- enjoy audio from iPod/iPhone/iPad, Bluetooth enabled devices, or other external devices.
- listen to FM radio stations.
- charge your iPod/iPhone/iPad.

Your iPod/ iPhone/iPad and FM radio can be set as alarm sources. You can set two alarms to go off at different time.

You can enrich sound output with these sound effect:

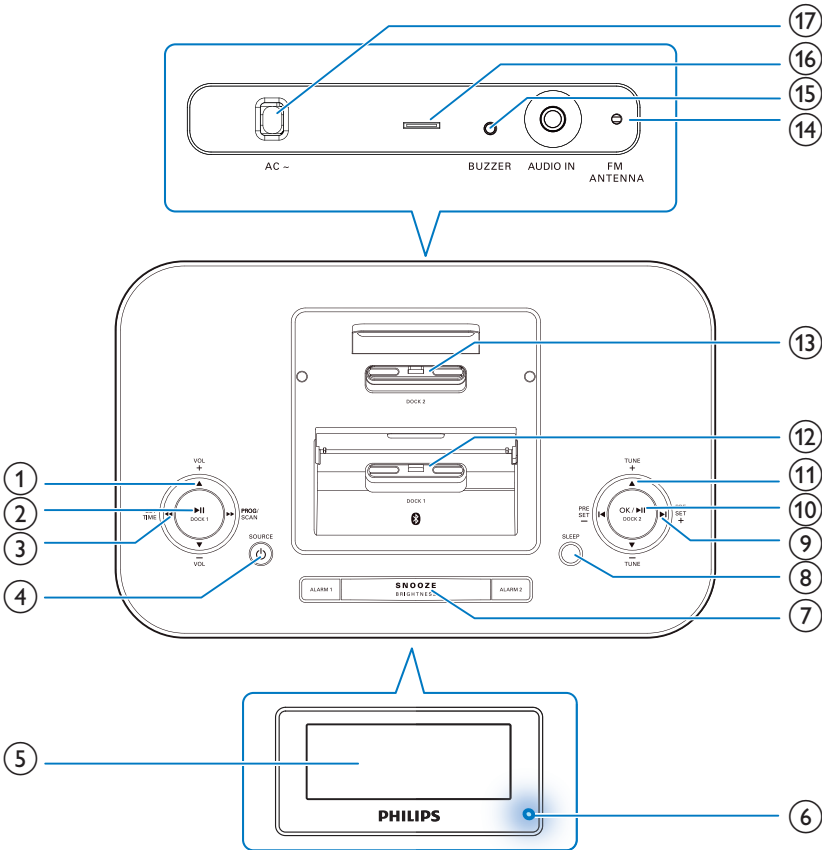
- Digital Sound Control (DSC)

What's in the box

Check and identify the contents of your package:

- Main unit
- Short user manual

Overview of the main unit



- ① ▲ / ▼ (VOL +/VOL -)
 - Increase/decrease volume.
- ② ►II / DOCK 1
 - In Dock 1 mode, start or pause play.
 - In other modes, switch to Dock 1 mode.
- ③ ◀◀ / SET TIME
 - In standby mode, set day, month and year.
 - In other modes, select a DSC (Digital Sound Control) sound effect.
- ④ ►► / PROG/SCAN
 - Program radio stations.
 - Automatically scan for radio stations.
 - In dock mode, press and hold to fast forward.
 - In Bluetooth mode, press to disconnect the current Bluetooth connection and enter pairing mode.
- ⑤
- ⑥
- ⑦
- ⑧
- ⑨
- ⑩
- ⑪
- ⑫
- ⑬
- ⑭
- ⑮
- ⑯
- ⑰

⑤ **⏻ /SOURCE**

- Press and hold to turn on the unit or switch to standby mode.
- Stop alarm.
- Select a source: DOCK 1/DOCK 2, BT, FM or AUDIO IN.

⑥ **ALARM 1/ALARM 2**

- Set alarm.
- View alarm settings.
- Activate/deactivate alarm timer.

⑦ **Display panel**

- Show the current status.

⑧ **Bluetooth indicator**

⑨ **SNOOZE/BRIGHTNESS**

- Snooze alarm.
- Adjust the display brightness.

⑩ **SLEEP**

- Set the sleep timer.

⑪ **⏮ / ⏭ (PRESET +/PRESET -)**

- Skip to next/previous track.
- Select a preset radio program.
- In dock mode, press and hold to search within a track.

⑫ **OK / ⏸ / DOCK 2**

- In Dock 2 mode, start or pause iPod/iPhone/iPad play.
- In Bluetooth mode, press and hold to start or pause music played through Bluetooth.
- In other modes, switch to Dock 2 mode.

⑬ **▲ / ▼ (TUNE+/TUNE-)**

- Set time and date.
- When setting alarm, adjust alarm clock and volume, and select a sound source.
- Tune to an FM audio station.

⑭ **Dock 1 for iPod/iPhone with Lightning connection**

⑮ **Dock 2 for iPod/iPhone/iPad with Lightning connection**

⑯ **USB charging port**

⑰ **AUDIO IN**

- Connect an external audio device.

⑱ **FM ANTENNA**

3 Get started

! Caution

- Use of controls or adjustments or performance of procedures other than herein may result in hazardous laser exposure or other unsafe operation.

Always follow the instructions in this chapter in sequence.

If you contact Philips, you will be asked for the model and serial number of this apparatus. The model number and serial number are on the bottom of the apparatus. Write the numbers here:

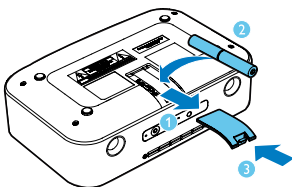
Model No. _____

Serial No. _____

Install batteries

☰ Note

- You can only use AC power as power supply. Batteries (not supplied) are for backup purpose.



- 1 Open the battery compartment.
- 2 Insert 2 x AA size batteries with correct polarity (+/-) as indicated.
- 3 Close the battery compartment.

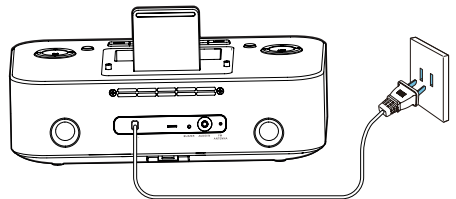
! Caution

- Risk of explosion! Keep batteries away from heat, sunshine or fire. Never discard batteries in fire.
- Risk of decreased battery life! Never mix different brands or types of batteries.
- Risk of product damage! When the device is not used for long periods, remove the batteries.

Connect power

! Caution

- Risk of product damage! Ensure that the power voltage corresponds to the voltage printed on the bottom of the apparatus.
- Risk of electric shock! When you unplug the AC power cord, always pull the plug from the socket. Never pull the cord.
- Before connecting the AC power cord, ensure you have completed all other connections.
- To disconnect the set from the mains completely, remove the mains plug from the wall socket.



- Connect the AC power cord to the wall outlet.

Turn on

- Press and hold **⏻** / **SOURCE**.
 - ↳ The unit switches to the last listened source.

Switch to standby

- Press and hold **⏻** / **SOURCE** again to switch the unit to standby mode.
 - ↳ The time and date (if set) appear on the display panel.

Select source

- Press **⏻** / **SOURCE** repeatedly to select from DOCK 1, DOCK 2, FM, AUDIO IN and BT.
- You can also press **▶||** / **DOCK 1** or **OK** / **▶|| DOCK 2** to select the DOCK 1 and DOCK 2 source directly.

Set time and date

- 1 In standby mode, press and hold **◀◀** / **SET TIME** for 2 seconds.
 - ↳ [24H] begins to blink, and you can hear a beep.
- 2 Press **▲** / **TUNE+** or **▼** / **TUNE-** to select the 12/24 hour format.
- 3 Press **OK** / **▶|| DOCK 2** to confirm.
 - ↳ 0:00 will display, and the hour digits begin to blink.
- 4 Repeat steps 2-3 to set the hour, minute, day, month and year.

Note

- When iPod/iPhone/iPad is connected, the docking unit synchronizes time from the iPod/iPhone/iPad automatically.

Tip

- In 12 hour format, [MONTH--DAY] is displayed.
- In 24 hour format, [DAY--MONTH] is displayed.

4 Play

Play from iPod/iPhone/iPad

You can enjoy audio from iPod/iPhone/iPad through this unit.

Compatible iPod/iPhone/iPad

The integrated dual dock unit supports the following iPod, iPhone, and iPad models:

Made for (Dock 1):

- iPhone 6
- iPhone 6 Plus
- iPhone 5S
- iPhone 5C
- iPhone 5
- iPod touch (5th generation)
- iPod nano (7th generation)

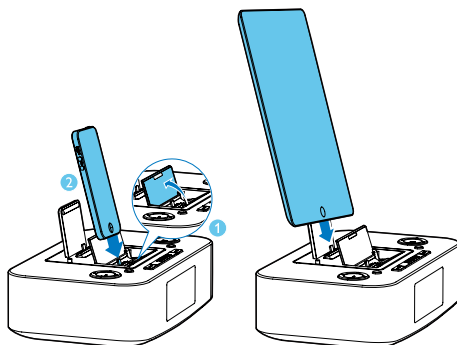
Also made for (Dock 2):

- iPhone 6
- iPhone 6 Plus
- iPhone 5S
- iPhone 5C
- iPhone 5
- iPad Air 2
- iPad Air
- iPad mini 3
- iPad mini with Retina display
- iPad mini
- iPad (4th generation)
- iPod touch (5th generation)
- iPod nano (7th generation)

Listen from docked iPod/iPhone/iPad

- 1 Press **▶||/DOCK 1** or **OK/▶||/DOCK 2** to select DOCK 1 or DOCK 2 mode.

- 2 In DOCK 1 mode, lift up the cover and then place the iPod/iPhone onto Dock 1.
 - In Dock 2 mode, place the iPod/iPhone/iPad onto Dock 2.



Tip

- You can also press **▶||** on dock 1 or dock 2 to switch to the corresponding source (dock 1 or dock 2) from any other source.

- To pause/resume play, press **▶||** on the corresponding dock.
- To skip to a track, press **◀|** / **|▶** (**PRESET +/PRESET -**).
- To search during play, press and hold **◀◀** / **▶▶** or **◀|** / **|▶** (**PRESET +/PRESET -**), then release to resume normal play.

Charge the iPod/iPhone/iPad

When the unit is connected to power, the docked iPod/iPhone/iPad begins to charge.

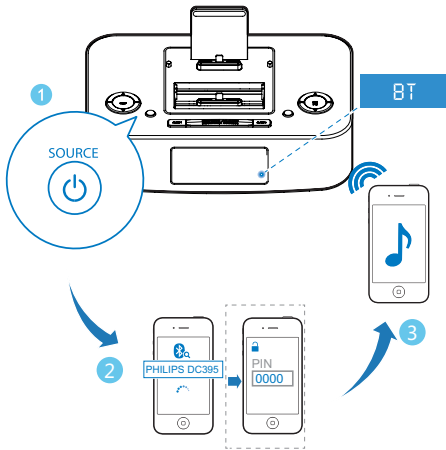
Tip

- For certain iPod models, it may take up to a minute before the charging indication appears.

Play from Bluetooth-enabled devices

Note

- The effective operation range between the unit and your Bluetooth enabled device is approximately 10 meters (30 feet).
- Any obstacle between the system and the device can reduce the operational range.
- Compatibility with all Bluetooth devices is not guaranteed.



- 1 Press **⏻** /SOURCE repeatedly to select the **Bluetooth** source.
↳ The Bluetooth indicator flashes blue.
- 2 On your device that supports Advanced Audio Distribution Profile (A2DP), enable Bluetooth and search for Bluetooth devices that can be paired (refer to the user manual of the device).
- 3 Select '**PHILIPS DC395**' on your Bluetooth enabled device and if necessary input '0000' as the pairing password.
↳ After successful pairing and connection, the Bluetooth indicator turns solid blue, and the unit beeps.

- 4 Play audio on the connected device.
↳ Audio streams from your Bluetooth enabled device to this unit.

Tip

- The unit can memorize up to 8 previously connected Bluetooth devices.

To pause/resume music play:

- Press and hold **▶||** /DOCK 2.
- **To disconnect the Bluetooth-enabled device:**
 - Deactivate Bluetooth on your device;
 - Press **▶▶** /PROG/SCAN; or
 - Move the device beyond the communication range.

To clear Bluetooth pairing history:

- Press and hold both **◀◀** /SET TIME and **▶▶** /PROG/SCAN for 3 seconds.
↳ The current Bluetooth connection is disconnected.
↳ 'RESET' is displayed.

Play from an external device

You can also listen to an external audio device through this unit.

- 1 Press **⏻** /SOURCE repeatedly to select the **AUDIO IN** source.
- 2 Connect a 3.5mm audio link cable (not supplied) to:
 - the **AUDIO IN** socket (3.5mm) on the back of the unit.
 - the headphone socket on an external device.↳ The text message [AUDIO IN] scrolls on the screen with display of the date and time.
- 3 Start to play the device (see the device user manual).

5 Listen to radio

Note

- Only FM radio reception is available on this unit.

Note

- The preset list can store up to 20 stations.
- If the preset list is fully occupied, the screen will show P 20.
- When you save a radio station to a position that has already been occupied, the original radio station will be replaced.

Tune to a radio station

Tip

- For the optimal reception, fully extend and adjust the position of the FM antenna.
- Position the antenna as far as possible from your TV, or other radiation sources.
- [STEREO] is the default setting for tuner mode.
- In tuner mode, you can press and hold ◀◀/SET TIME to switch between [STEREO] and [MONO], and the unit memorizes your setting even if you turn off the unit or switch to other sources.

- 1 Press **⏻** /SOURCE repeatedly to select FM mode.
- 2 Press and hold **▲** / **▼** (TUNE+/TUNE-) for more than 2 seconds.
 - ↳ The radio tunes to the next station with strong reception automatically.
- 3 Repeat step 2 to tune to more stations.
 - To tune to a weak station, press **▲** / **▼** (TUNE+/TUNE-) repeatedly until you find the optimal reception.

Program radio stations

Radio station presetting allows you to save radio stations, and quickly tune to a favorite station.

Program radio stations manually

- 1 Press **⏻** /SOURCE repeatedly to enter FM mode.
- 2 Press **▲** / **▼** (TUNE+/TUNE-) to tune to a radio station.
- 3 Press **▶▶** /PROG/SCAN.
 - ↳ A preset number flashes.
- 4 Press **◀** / **▶** (PRESET +/PRESET -) to change the preset number.
- 5 Press **OK** / **▶▶** /DOCK 2 to save the current radio station to the selected preset number.

Program radio stations automatically

- 1 Press **⏻** /SOURCE repeatedly to enter M mode.
- 2 Press and hold **▶▶** /PROG/SCAN.
 - ↳ The screen displays [AUTO] (auto).
 - ↳ The unit starts to scan for all available radio stations automatically, and saves them to the preset list.
- 3 Wait until the auto scan finishes.
 - ↳ The first station in the preset list broadcasts automatically.

Select a preset radio station

- Press **◀** / **▶** (PRESET +/PRESET -) to select a preset number.

6 Other features

Set the alarm timer

You can set two alarms to ring at different time.

Note

- Make sure that you have set the clock correctly.

- 1 Press and hold **ALARM 1** or **ALARM 2**.
 - ↳ The hour digits begin to blink, and you can hear one beep.
 - ↳ [AL SET] (alarm set) flashes on the screen.
- 2 Press **▲** / **▼** (**TUNE+**/**TUNE-**) repeatedly to set the hour.
- 3 Press **OK** / **▶||** / **DOCK 2** to confirm.
 - ↳ The minute digits begin to blink.
 - ↳ [AL SET] (alarm set) flashes on the screen.
- 4 Repeat steps 2-3 to set the minute, select when to ring alarm, and choose alarm sound source and alarm volume.

After the alarm volume is set, the unit exits alarm setting, and you can hear two beeps.



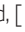

Tip

- If you select **DOCK 1**/**DOCK 2** as the alarm sound source, when there is no device docked, the alarm will automatically switch to the buzzer sound.
- If both alarms are set to the same time, only Alarm 1 will ring.

View the alarm settings

- Press **ALARM 1** or **ALARM 2** to view alarm settings.

Activate and deactivate the alarm timer

- When an alarm setting is shown on the screen, press **ALARM 1**/**ALARM 2** repeatedly to activate or deactivate the timer.
 - ↳ If the timer is activated, [ AL 1] or [ AL2] is displayed.
 - ↳ If the timer is deactivated, [ AL1] or [ AL2] disappears.

Snooze

- When the alarm rings, press **SNOOZE**/**BRIGHTNESS**.
 - ↳ The alarm stops, and the alarm icon flashes.
 - ↳ The alarm will resume ringing 9 minutes later.

Note

- When the units runs on battery power, only the buzzer can be used as the alarm sound source.

Stop alarm ring

- When the alarm rings, press the corresponding **ALARM 1** or **ALARM 2**.
 - ↳ The alarm stops but the alarm settings remain.

Tip

- If you press and hold **⏻** / **SOURCE**, the alarm will also be stopped, and the unit will switch to standby mode.
- If you do not stop the alarm, it will ring for 30 minutes.
- When an alarm rings, it begins from a relative low volume, and rises gradually to the highest alarm volume in 90 seconds.

Set the sleep timer

This unit can switch to standby mode automatically after a set period of time.

- Press **SLEEP** repeatedly to select from 120, 90, 60, 45, 30 and 15 minutes.
 - ↳ When the sleep timer is activated, **zZ** is shown on the screen.

To deactivate sleep timer

- Press **SLEEP** repeatedly until [OFF] (off) is shown.
 - ↳ The sleep timer is deactivated, **zZ** disappears from the screen.

Adjust display brightness

- When no alarm is ringing, press **SNOOZE/BRIGHTNESS** repeatedly to select different levels of display brightness.



Note

- When using batteries to operate, you can not select brightness levels.

7 Adjust sound

Adjust volume level

- During play, press ▲ / ▼ (VOL +/-) to increase/decrease the volume level step by step.



Tip

- You can also press and hold ▲ / ▼ (VOL +/-) to increase/decrease the volume at a faster speed.

Select a sound effect

- During play, press ◀◀/SET TIME repeatedly to select from a preset sound effect.



Note

- The unit supports the following sound effects: **WARM** (warm), **BRIGHT** (bright), **BALANCED** (balanced), **POWERFUL** (powerful) and **CLEAR** (clear).

8 Product information

Note

- Product information is subject to change without prior notice.

Specifications

Amplifier

Rated Output Power	2 × 5W RMS at 10% THD
Frequency Response	80 -16000 Hz, ±3dB
Signal to Noise Ratio	> 65dBA
Audio-in Input	500mV RMS 20kohm

FM

Tuning Range	87.5 - 108MHz
Tuning grid	50 KHz
- Mono, 26dB quieting sensitivity	18 dbf 48 dBf
- Stereo, 46dB quieting sensitivity	
Search Sensitivity	35 dBf
Total Harmonic Distortion	< 3%
Signal to Noise Ratio	> 55 dB

Speakers

Speaker Impedance	4 ohm
Speaker Driver	58 mm
Sensitivity	81±3dB/m/W

Bluetooth

Bluetooth Version	V2.1 + EDR
Bluetooth Frequency Band	2.4 GHz ~ 2.48 GHz ISM Band
Bluetooth Range	10 m (free space)

General information

AC power	100-240V, 50/60Hz
Operation Power Consumption	22 W
Eco Standby Power Consumption	<1 W
Dimensions	
- Main Unit (W × H × D)	263 × 134 × 165 mm
Weight (Main unit, without packing)	1.13 kg

9 Troubleshooting



Caution

- Never remove the casing of this apparatus.

To keep the warranty valid, never try to repair the system yourself.

If you encounter problems when using this apparatus, check the following points before requesting service. If the problem remains unsolved, go to the philips web site (www.philips.com/support). When you contact philips, ensure that your apparatus is nearby and the model number and serial number are available.

No power

- Ensure that the AC power plug of the unit is connected properly.
- Ensure that there is power at the AC outlet.
- Ensure that the batteries are inserted correctly.

No sound

- Adjust the volume.
- Check if the unit is performing auto scan. Volume is muted during auto scan process.

No response from the unit

- Remove the batteries from the main unit (if inserted), disconnect and reconnect the AC power plug, and turn on the unit again.

Music playback is unavailable on this unit even after successful Bluetooth connection.

- The device cannot be used to play music through this unit wirelessly.

The audio quality is poor after connection with a Bluetooth-enabled device.

- The Bluetooth reception is poor. Move the device closer to this unit or remove any obstacle between them.

Bluetooth cannot be connected with this unit.

- The device does not support the profiles required for this unit.
- The Bluetooth function of the device is not enabled. Refer to the user manual of the device to find out how to enable the function.
- This unit is not in pairing mode.
- This unit is already connected with another Bluetooth-enabled device. Disconnect that device and then try again.

The paired mobile device connects and disconnects constantly.

- The Bluetooth reception is poor. Move the device closer to this unit or remove any obstacle between them.
- Some mobile phones may connect and disconnect constantly when you make or end calls. This does not indicate any malfunction of this unit.
- For some devices, the Bluetooth connection may be deactivated automatically as a power-saving feature. This does not indicate any malfunction of this unit.

Poor radio reception

- Increase the distance between the unit and your TV or VCR.
- Fully extend the FM antenna.

Timer does not work

- Set the clock correctly.
- Switch on the timer.

Clock/timer setting erased

- Power has been interrupted or the power plug has been disconnected.
- Reset the clock/timer.
-



2015 © Gibson Innovations Limited. All rights reserved.
This product has been manufactured by, and is sold under the responsibility of Gibson Innovations Ltd., and Gibson Innovations Ltd. is the warrantor in relation to this product.
Philips and the Philips Shield Emblem are registered trademarks of Koninklijke Philips N.V. and are used under license from Koninklijke Philips N.V.

DC395_93_UM_V1.0

