

User manual

Manual do usuário

Manual del usuario



PHILIPS

México



Es necesario que lea cuidadosamente su instructivo de manejo.

	PRECAUCIÓN - ADVERTENCIA No abrir, riesgo de choque eléctrico	
	ATENCIÓN Verifique que el voltaje de alimentación sea el requerido para su aparato	
Para evitar el riesgo de choque eléctrico, no quite la tapa. En caso de requerir servicio, dirijase al personal calificado.		

Descripción: **Minisistema de Audio**
Modelo : **FWM986/55**
Alimentación: **110-127 / 220-240V~; 50-60 Hz**
Consumo: **300W**
Importador: **Philips Mexicana, S.A. de C.V.**
Domicilio: **Av. La Palma No.6**
Col. San Fernando La Herradura
Huixquilucan
Localidad y Tel: **Edo. de México C.P. 52784**
Tel.52 69 90 00
Exportador: **Philips Electronics HK, Ltd.**
País de Origen: **China**
N° de Serie: _____

**LEA CUIDADOSAMENTE ESTE INSTRUCTIVO
ANTES DE USAR SU APARATO.**

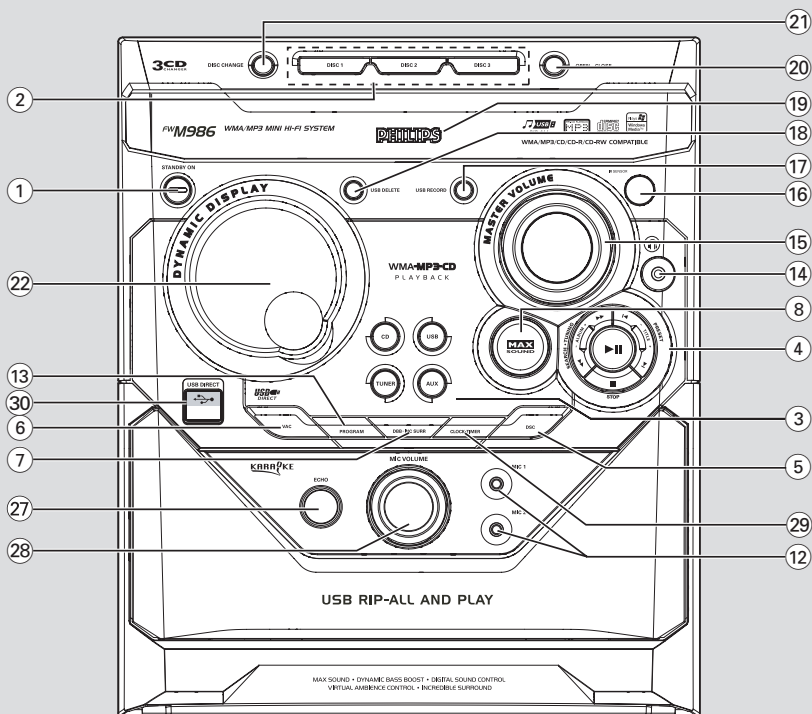
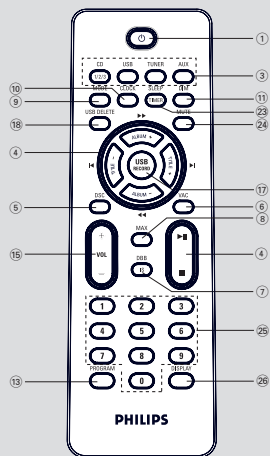
AVISO IMPORTANTE

Philips Mexicana, S.A. de C.V. no se hace responsable por daños o desperfectos causados por:

- Maltrato, descuido o mal uso, presencia de insectos o roedores (cucarachas, ratones etc.).*
- Cuando el aparato no haya sido operado de acuerdo con el instructivo del uso, fuera de los valores nominales y tolerancias de las tensiones (voltaje), frecuencia (ciclaje) de alimentación eléctrica y las características que deben reunir las instalaciones auxiliares.*
- Por fenómenos naturales tales como: temblores, inundaciones, incendios, descargas eléctricas, rayos etc. o delitos causados por terceros (choques asaltos, riñas, etc.).*

CAUTION

Use of controls or adjustments or performance of procedures other than herein may result in hazardous radiation exposure or other unsafe operation.



DEMO MODE

To turn ON

Press & HOLD



button

for 3 seconds

To turn OFF

Press & HOLD



button

for 3 seconds

PLUG & PLAY -for tuner installation

1



Plug in the unit

2



Follow instructions
in the display

3



Press "PLAY"

English 6

Español 29

Português 52

English

Español

Português

Contents

General Information

Supplied accessories	7
Environmental information	7
Safety information	7

Preparations

Rear connections	8–9
Power	
Antennas Connection	
Speakers Connection	
Optional connection	9
Connecting a USB device or memory card	
Connecting a non - USB device	
Inserting batteries into the remote control ...	9

Controls

Controls on the system and remote control ...	
.....	10–11
Hearing Safety	11

Basic Functions

Plug and Play	12
Demonstration mode	13
Switching the system on	13
Switching the system to standby mode	13
Dim mode	13
Volume control	13
Sound control	14
MAX Sound	
VAC (Virtual Ambience Control)	
DSC (Digital Sound Control)	
DBB (Dynamic Bass Boost)	
Incredible Surround	
Karaoke	14

CD/MP3-CD Operations

Discs for playback	15
About MP3 disc	15
Loading discs	15
Playing discs	16
Replacing discs during playback	16
Selecting a desired track/passage	16
Selecting a desired Album/Title	16
Different play modes: SHUFFLE and REPEAT ...	
.....	17
Programming the disc tracks	17
Erasing the programme	17

Radio Reception

Tuning to radio stations	18
Storing preset radio stations	18–19
Automatic Preset Programming	
Manual Preset Programming	
Tuning to preset radio stations	19
Changing tuning grid	19

External Sources

Connecting external equipment	20
Using a USB mass storage device	20–21
Ripping function	22
Tuner record timer setting	23

Clock/Timer

View clock	24
Clock setting	24
Timer setting	25
To deactivate the TIMER	
To activate the TIMER	
Sleep timer setting	25

Specifications

Maintenance

Troubleshooting

IMPORTANT!

PLEASE NOTE THAT THE VOLTAGE SELECTOR LOCATED AT THE REAR OF THIS SYSTEM IS PRESET AT 220V FROM THE FACTORY. FOR COUNTRIES THAT OPERATE AT 110V-127V, PLEASE ADJUST TO 110V-127V BEFORE YOU SWITCH ON THE SYSTEM.

Supplied accessories

- 2 front speakers
- 2 rear speakers
- 2 subwoofer
- Microphone
- Remote control
- One pair of AAA battery
- MW loop antenna
- FM wire antenna
- AC power cord
- RCA aux-in cable
- AC adaptor(2pin round to flat)
- Guarantee Booklet
- Quick start guide
- This instruction booklet

Environmental information

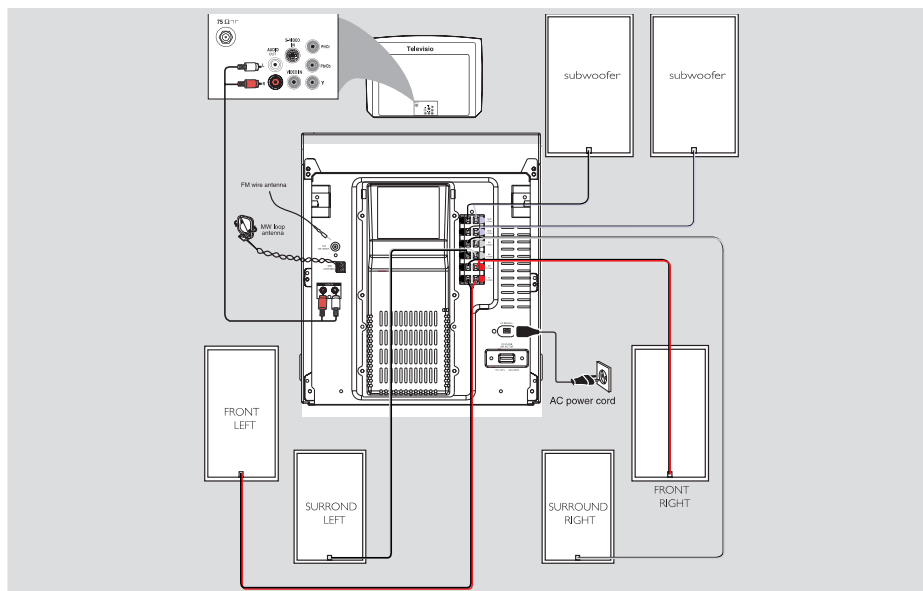
All unnecessary packaging has been omitted. We have tried to make the packaging easy to separate into three materials: cardboard (box), polystyrene foam (buffer) and polyethylene (bags, protective foam sheet).

Your system consists of materials which can be recycled and reused if disassembled by a specialised company. Please observe the local regulations regarding the disposal of packaging materials, exhausted batteries and old

equipment.

Safety information

- Before operating the system, check that the operating voltage indicated on the typeplate (or the voltage indication beside the voltage selector) of your system is identical with the voltage of your local power supply. If not, please consult your dealer.
- Place the system on a flat, hard and stable surface.
- Place the system in a location with adequate ventilation to prevent internal heat build-up in your system. Allow at least 30 cm (4 inches) clearance from the rear and the top of the unit and 30 cm (2 inches) from each side.
- The ventilation should not be impeded by covering the ventilation openings with items, such as newspapers, table-cloths, curtains, etc.
- Do not expose the system, batteries or discs to excessive moisture, rain, sand or heat sources caused by heating equipment or direct sunlight.
- No naked flame sources, such as lighted candles, should be placed on the apparatus.
- No objects filled with liquids, such as vases, shall be placed on the apparatus.
- Don't expose the system to dripping or splashing.
- Install this unit near the AC outlet and where the AC power can be reached easily.
- The lens may cloud over when the system is suddenly moved from cold to warm surroundings, making it impossible to play a disc. Leave the system in the warm environment until the moisture evaporates.
- The mechanical parts of the set contain self-lubricating bearings and must not be oiled or lubricated.
- **When the system is switched to Standby mode, it is still consuming some power. To disconnect the system from the power supply completely, remove the AC power plug from the wall socket.**



Rear connections

The type plate is located at the rear of the system.

Power

- Before connecting the AC power cord to the wall outlet, ensure that all other connections have been made.
- If your system is equipped with a Voltage Selector; set the VOLTAGE SELECTOR to the local power line voltage.

Warning!

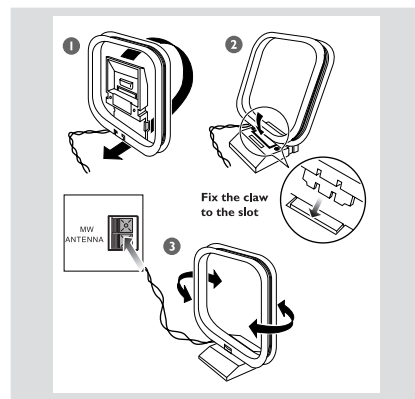
- **For optimal performance, use only the original power cable.**
- **Never make or change any connections with the power switched on.**

To avoid overheating of the system, a safety circuit has been built in. Therefore, your system may switch to Standby mode automatically under extreme conditions. If this happens, let the system cool down before reusing it (not available for all versions).

Antennas Connection

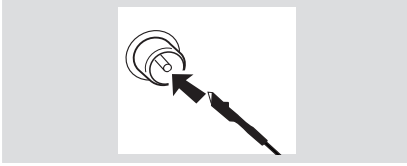
Connect the supplied MW loop antenna and FM antenna to the respective terminals. Adjust the position of the antenna for optimal reception.

MW Antenna



- Position the antenna as far as possible from a TV, VCR or other radiation source.

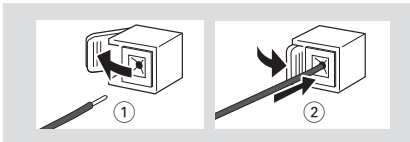
FM Antenna



- For better FM stereo reception, connect an outdoor FM antenna to the FM ANTENNA terminal.

Speakers Connection

Connect the speaker wires to the **SPEAKERS (FRONT)** terminals, right speaker to "FR" and left speaker to "FL", connect the speaker wires to the **SPEAKERS (SURROUND)** terminals, right speaker to "SR" and left speaker to "SL", purple wires to "+" and black wires to "-" of the woofer connection terminals.



- Fully insert the stripped portion of the speaker wire into the terminal as shown.

Notes:

- For optimal sound performance, use the supplied speakers.
- Do not connect more than one speaker to any one pair of +/- speaker terminals.
- Do not connect speakers with an impedance lower than the speakers supplied. Please refer to the SPECIFICATIONS section of this manual.

Optional connection

The optional equipment and connecting cords are not supplied. Refer to the operating instructions of the connected equipment for details.

Connecting a USB device or memory card

By connecting a USB mass storage device (including USB flash memory, USB flash players or memory cards) to the Hi-Fi system, you can enjoy the device's stored music through the powerful speakers of Hi-Fi system.

- Insert the USB device's USB plug into the socket on the set.

OR

for the devices with USB cables:

- 1 Insert one plug of the USB cable (not supplied) to the socket on the set.
- 2 Insert the other plug of the USB cable to the USB output terminal of the USB device.

OR

for the memory card:

- 1 Insert the memory card into a card reader (not supplied).
- 2 Use a USB cable (not supplied) to connect the card reader into the socket on the set.

Connecting a non-USB device

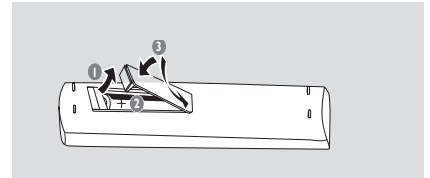
Use a cinch cable to connect **AUX** to the analogue audio out terminals of an external equipment (TV, VCR, Laser Disc player, DVD player or CD Recorder).

Note:

- If you are connecting equipment with a mono output (a single audio out terminal), connect it to the AUX left terminal. Alternatively, you can use a "single to double" cinch cable (the output sound still remain mono).

Inserting batteries into the remote control

Insert two batteries (Type R03 or AAA) into the remote control with the correct polarity as indicated by the "+" and "-" symbols inside the battery compartment.



CAUTION!

- Remove batteries if they are exhausted or will not be used for a long time.
- Do not use old and new or different types of batteries in combination.
- Batteries contain chemical substances, so they should be disposed of properly.

Controls (illustrations on page 3)

Controls on the system and remote control

① **STANDBY ON**

- to switch the system on or to standby mode.

② **DISC 1/2/3 (CD 1/2/3)**

- to select a disc tray for playback.

③ **Source selection** – to select the following :

CD

- to select disc source.
- press repeatedly to select a disc tray for playback.

TUNER

- to select waveband: FM or MW.

AUX

- to select the input for an additional appliance : AUX.

USB

- to select USB source directly.

④ **Mode Selection**

ALBUM +/- <<>>

for MP3-CD/USB : to select previous/next album.

for CD to search backward/forward.

for Tuner to tune to a lower or higher radio frequency.

for Clock to set the hour.

STOP ■

for CD/MP3-CD/USB to stop playback or to clear a programme.

for Tuner..... *(on the system only)* to stop programming.

for Demo *(on the system only)* to activate/deactivate the demonstration.

for Clock *(on the system only)* to exit clock setting.

for Plug & Play *(on the system only)* to exit plug & play mode.

▶ II

for CD/MP3-CD/USB to start or interrupt playback.

for Plug & Play *(on the system only)* to initiate and start plug & play mode.

TITLE +/- </> PRESET

for MP3-CD/USB : to select previous/next title.

for CD to skip to the beginning of the current, previous, or next track.

for Tuner to select a preset radio station.

for Clock to set the minute.

⑤ **DSB**

- to select different type of preset sound equaliser settings (OPTIMAL, JAZZ, ROCK or TECHNO).

⑥ **VAC**

- to select different type of ambience-based equaliser settings (HALL, CONCERT or CINEMA).

⑦ **DBB/INC SURR (DBB/IS)**

- to select the desired bass boost level (DBB 1, DBB 2, DBB 3 or DBB OFF).
- to activate or deactivate the surround sound effect.

⑧ **MAX SOUND (MAX)**

- to activate or deactivate the optimal mix of various sound features.

⑨ **MODE**

- selects different play modes: e.g. REPEAT or SHUFFLE (random order).

⑩ **CLOCK**

- to set or view the clock.

⑪ **DIM**

- to select different brightness for the display screen: DIM 1, DIM 2, DIM 3 or DIM OFF.

12 MIC1/2

- to connect microphones.

13 PROGRAM

- for CD/ MP3-CD : to programme disc tracks.
- for Tuner to programme preset radio stations.

14

- to connect headphones.

15 MASTER VOLUME (VOL +/-)

- to increase or decrease the volume.

16 IR SENSOR

- sensor for the infrared remote control.

17 USB RECORD

- to copy music to an external portable USB storage device.

18 USB DELETE

- to delete music stored on the external USB device.

19 Disc tray

20 OPEN•CLOSE

- to open or close the disc tray.

21 DISC CHANGE

- to change disc(s).

22 Display screen

- to view the current status of the system.

23 SLEEP/TIMER

- to activate/deactivate or set the sleep timer.

24 MUTE

- to mute or restore the volume.

25 NUMERIC KEYS

- to input numbers.

26 DISPLAY

- to display the album and title name for MP3 / WMA disc ; to display the remain time for CD disc.

27 ECHO

- to adjust the echo level.

28 MIC VOLUME

- to adjust the mixing level for Karaoke.

29 CLOCK•TIMER

- to view the clock.
- to set the clock or set the timer.

30 USB DIRECT

- jack for the external USB mass storage device.

Hearing Safety

Listen at a moderate volume.

- Using headphones at a high volume can impair your hearing. This product can produce sounds in decibel ranges that may cause hearing loss for a normal person, even for exposure less than a minute. The higher decibel ranges are offered for those that may have already experienced some hearing loss.
- Sound can be deceiving. Over time your hearing "comfort level" adapts to higher volumes of sound. So after prolonged listening, what sounds "normal" can actually be loud and harmful to your hearing. To guard against this, set your volume to a safe level before your hearing adapts and leave it there.

To establish a safe volume level:

- Set your volume control at a low setting.
- Slowly increase the sound until you can hear it comfortably and clearly, without distortion.

Listen for reasonable periods of time:

- Prolonged exposure to sound, even at normally "safe" levels, can also cause hearing loss.
- Be sure to use your equipment reasonably and take appropriate breaks.

Be sure to observe the following guidelines when using your headphones.

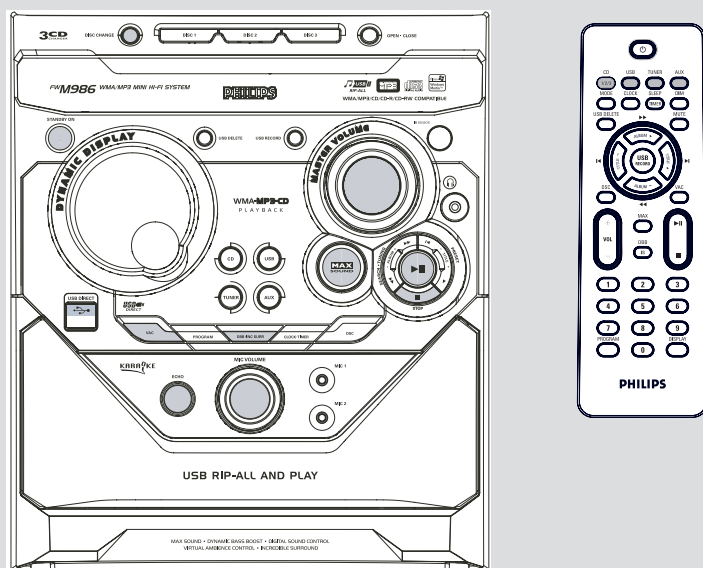
- Listen at reasonable volumes for reasonable periods of time.
- Be careful not to adjust the volume as your hearing adapts.
- Do not turn up the volume so high that you can't hear what's around you.
- You should use caution or temporarily discontinue use in potentially hazardous situations.
- Do not use headphones while operating a motorized vehicle, cycling, skateboarding, etc.; it may create a traffic hazard and is illegal in many areas.

Notes for remote control:

– **First, select the source you wish to control by pressing one of the source select keys on the remote control (CD or TUNER, for example).**

– **Then select the desired function (▶, ◀, ►, for example).**

Basic Functions



IMPORTANT!

Before you operate the system, complete the preparation procedures.

Plug and Play (for tuner installation)

Plug and Play allows you to store all available radio stations automatically.

First time setup/power up

- 1 When you turn on the main supply, "AUTO INSTALL - PRESS PLAY" is displayed.
- 2 Press ► II on the system to start installation.
 - "PLUG AND PLAY" "INSTALL" is displayed, followed by "TUNER" and "AUTO".
 - **PROG** starts flashing.
 - All available radio stations with sufficient signal strength will be stored automatically, starting from FM and followed by MW band.
 - When all the available radio stations are stored or the memory for 40 presets are used, the last preset radio station will be played.

To reinstall Plug and Play

- 1 In standby or demonstration mode, press and hold ► II on the system until "AUTO INSTALL - PRESS PLAY" is displayed.
- 2 Press ► II again to start installation.
 - All previously stored radio stations will be replaced.

To exit without storing the Plug and Play

- Press ■ on the system.
 - If you do not complete the Plug and Play installation, the function will be restarted when you next turn on the main supply again.

Notes:

- When the power is turned on, the disc tray may open and close to initialise the system.
- If no stereo frequency is detected during Plug and Play, "CHECK ANTENNA" will be displayed.
- During Plug and Play, if no button is pressed within 10 seconds, the system will exit Plug and Play mode.

Demonstration mode

The system has a demonstration mode that shows the various features offered by the system.

To activate the demonstration

- In **standby mode**, press and hold ■ on the system for 5 seconds to switch to demonstration.

To deactivate the demonstration

- Press and hold ■ on the system for 5 seconds to switch to standby mode.

Switching the system on

In standby/demonstration mode

- Press **STANDBY ON** / ⏻ to switch to the last selected source.
- Press **CD, TUNER, USB** or **AUX**.
- Press **OPEN•CLOSE, DISC 1/2/3 (CD 1/2/3), DISC CHANGE**.
→ The system will switch to CD mode.

Switching the system to standby mode

In demonstration mode

- Press and hold ■ on the system.

In any other source mode

- Press **STANDBY ON** (or ⏻ on the remote control).
→ The clock will appear on the display when the system is in standby mode.

Dim mode

You can select the desired brightness for the display.

- In any source mode, press **DIM** on the remote control repeatedly to select DIM 1, DIM 2, DIM 3 or DIM OFF display mode.
→ **DIM** is shown, except for DIM OFF mode.

Volume control

Adjust **MASTER VOLUME** to increase (turn knob clockwise or press **VOLUME +**) or decrease (turn knob anti-clockwise or press **VOLUME -**) the sound level.

To listen through the headphones

- Connect the headphones plug to the 🎧 socket at the front of the system.
→ The speakers will be muted.

To switch off the volume temporarily

- Press **MUTE** on the remote control.
→ Playback will continue without sound and "MUTE" is displayed.
- To restore the volume, press **MUTE** again or increase the volume level.



Basic Functions

Sound control

For optimal sound listening, select only one of the following navigation sound controls at a time : MAX, DSC or VAC.

MAX Sound

MAX sound provides the best mixture of various sound features (DSC, VAC, DBB, for example).

- Press **MAX SOUND** (or **MAX** on the remote control) repeatedly.
 - If activated, **MAX SOUND** is shown and the MAX SOUND button lights up.
 - If deactivated, "OFF" is displayed and the MAX button black out.

VAC (Virtual Ambience Control)

The VAC feature enables you to adjust the system to select a type of environment.

- Press **VAC** to select : CINEMA, HALL or CONCERT.
 - The selected VAC is shown.

DSC (Digital Sound Control)

The DSC feature enables you to enjoy special sound effects that have preset equaliser settings, providing the best music reproduction.

- ① Press **DSC** to select : OPTIMAL, JAZZ, ROCK or TECHNO.
 - The selected DSC is shown.

DBB (Dynamic Bass Boost)

There are three DBB settings to enhance the bass response.

- ① Press **DBB** to select : DBB 1, DBB 2, DBB 3 or DBB OFF.
 - The selected **DBB** is shown, except for DBB OFF mode.

DSC-DBB selection

When select CD mode, the default setting of DSC / DBB is ROCK / DBB2 . Press DSC to select DSC mode, the DBB setting remains last DSC's DBB setting. You can manually select the DBB setting that best suits your listening environment.

Incredible Surround

The Incredible Surround magnifies the virtual distance between the front speakers for an incredibly wide, enveloping, stereo effect.

- Press and hold **DBB-INC SURR** (or **DBB/IS** on the remote control) until "INCR SURR" is displayed.
 - If activated, "INC SURR" is displayed.
 - If deactivated, "IS OFF" is displayed.

Note:

— Some discs might be recorded in high modulation, which causes a distortion at high volume. If this occurs, switch off DBB or reduce the volume.

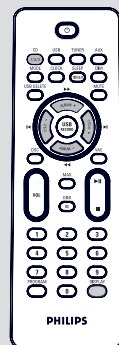
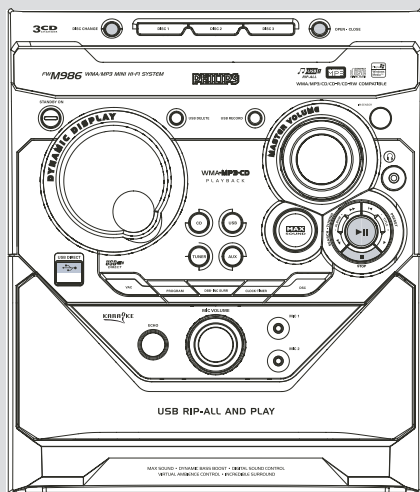
Karaoke

Connecting a microphone to the system allowing you to sing along with the music source.

- ① Connect microphone(s) to the **MIC 1/2** jack.
- Before connecting the microphone, set the microphone **MIC VOLUME** to the minimum level to prevent howling sound.
- ② Press **DISC (CD 1/2/3). TUNER. USB** or **AUX** to select the source to be mixed and start playback.
- ③ Adjust the volume level of the source with **MASTER VOLUME** control.
- ④ Adjust the microphone volume with the microphone **MIC VOLUME** control.
- ⑤ Adjust the echo level with the **ECHO** control.

Note:

— Keep the microphone away from the speakers to prevent howling.



IMPORTANT!

- **This system is designed for regular discs. Therefore, do not use any accessories such as disc stabiliser rings or disc treatment sheets, etc., as offered on the market, because they may jam the changer mechanism.**
- **Do not load more than one disc into each tray.**

Discs for playback

This system can playback all digital audio CD, finalised digital audio CD-Recordable (CDR) discs and finalised digital audio CD-Rewritable (CDRW) discs.

MP3-CDs (CD-ROMs with MP3 tracks)



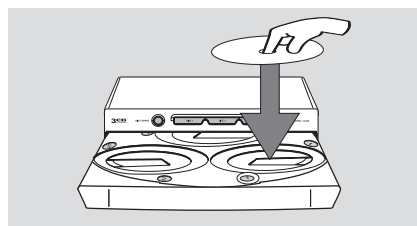
About MP3 disc

Supported formats

- ISO9660, Joliet, Multisession
- Max. track number plus album is 255
- Max. nested directory is 8 levels
- The max. album number is 32
- The max. MP3 program track number is 40
- Supported VBR bit-rate
- Supported sampling frequencies for MP3 disc are: 32 kHz, 44.1 kHz, 48 kHz
- Supported Bit-rates of MP3 disc are: 32, 64, 96, 128, 192, 256 (kbps)

Loading discs

- 1 Press **OPEN-CLOSE** to open the disc tray.
- 2 Load up to two discs on the individual disc trays. To load the third disc, press **DISC CHANGE**.
→ The disc tray will rotate until the empty tray is ready for loading.



CD/MP3-CD Operations

- 3 Press **OPEN•CLOSE** to close the disc tray.
 → "READING DISC" scrolls. The selected disc tray, playing number of tracks and the playing time will appear on the display.
 → A lighted button indicates that a disc is loaded on the disc tray.
 → For MP3/ WMA disc, the name of the first album and title will be scrolled through the display once and followed by "XXX XXXX".

Notes:

- Load the discs with the label side facing up.
- To ensure good system performance, wait until the disc tray completely reads the disc(s) before proceeding.
- For MP3 disc, the disc reading time may exceed 10 seconds due to the large number of songs compiled into one disc.

Playing discs

To play current disc on the disc tray

- Press ► **II** .
 → The current discs will play once, then stop.
 → During playback, the selected disc tray, track number and elapsed playing time of the current track are displayed.
 → For MP3/WMA disc, TITLE is shown. For mixed mode discs, only one mode will be selected for playback depending on the recording format.

To interrupt playback

- Press ► **II** .
 → The current track time flashes.
- To resume playback, press ► **II** again.

To stop playback

- Press **STOP**■.

For MP3-CD

- During playback, press **DISPLAY** to show the album and title name.

Replacing discs during playback

- 1 Press **DISC CHANGE**.
 → The disc tray will open without interrupting current playback.
- 2 To change the inner disc, press **DISC CHANGE** again.
 → "CHANGING DISC" is displayed and the disc will stop playing.
 → The disc tray will close to retrieve the inner disc, then reopen with the inner disc accessible.

Selecting a desired track/passage

To search for a particular passage during playback

- Press and hold **ALBUM** -/+ ◀▶ and release it when the desired passage is located.
 → During searching, the volume will be reduced.

To select a desired track

- Press **TITLE** -/+ ◀▶ repeatedly until the desired track is displayed.
- If playback is stopped, press ► **II** to start playback.

Selecting a desired Album/Title (MP3/WMA disc only)

To select a desired album

- Press **ALBUM** -/+ ◀▶ repeatedly.
 → The album's name will scroll through the display once.

To select a desired title

- Press **TITLE** -/+ ◀▶ repeatedly.
 → The title's name will scroll through the display once.

Note:

- The album and title will only displayed once when selected. To view again, press the **DISPLAY** button repeatedly to display **ALBUM** and **TITLE** alternatively.

Different play modes: SHUFFLE and REPEAT

You can select and change the various play modes before or during playback.
Press **MODE** on the remote control to select:

- "REPEAT TRACK" – to repeat playback of the current track.
- "REPEAT ALL" – to repeat playback of the current disc.
- "SHUFFLE ON" – to random playback of the current disc.
- "REPEAT OFF" – to stop repeat function and resume normal playback.
- "SHUFFLE OFF" – to stop shuffle function and playback current disc.

- **REP** or **SHUF** is shown, except SHUFFLE OFF mode.

Note:

- During program play mode or playing an MP3 CD, it is not possible to repeat playback of the current disc (Repeat Disc mode).

Programming the disc tracks

Programming tracks is possible when playback is stopped. Up to 40 tracks can be stored in the memory in any order.

- 1 Load the desired discs on the disc tray (refer to "Loading discs").
- 2 Press **DISC 1/2/3** to select a disc.
- 3 Press **PROGRAM** to start programming in stop mode in stop mode.
→ **PROG** starts flashing.
- 4 Press **TITLE +/-** **◀ / ▶** repeatedly to select the desired track.
- For MP3 disc, press **ALBUM +/-** **◀▶▶** and **TITLE +/-** **◀ / ▶** to select the desired album and title for programming.
- 5 Press **PROGRAM** to store the track.

- 6 To end programming, press **STOP** once.
→ **PROG** stays and the programme mode remains active.
→ The total number of tracks programmed and the total playing time are displayed.
→ For MP3 disc, total playing time will not be shown.
- 7 To start programme play, press **▶ ||**.

Notes:

- It is not possible to create a programme with MP3 tracks from multiple CDs, or combined with normal audio tracks.
- If the total playing time is more than "99:59" then "--:" is displayed instead of the total playing time.
- If you attempt to programme more than 40 tracks, "PROGRAM FULL" is displayed.
- During programming, if no button is pressed within 25 seconds, the system will exit the programme mode automatically.

To review the programme

- Stop playback and press **TITLE +/-** **◀ / ▶** repeatedly.

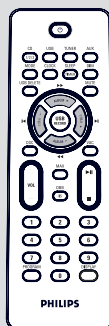
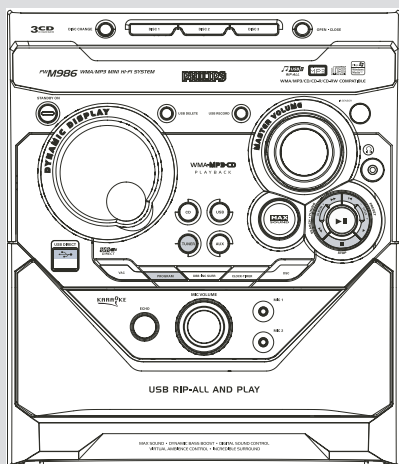
Erasing the programme

- Press **STOP** once when playback is stopped or **twice** during playback.
→ **PROG** disappears and "PROGRAM CLEAR" is displayed.

Note:

- The programme will be erased when the system is disconnected from the power supply or when the disc tray is opened.

Radio Reception



Tuning to radio stations

- 1 Press **TUNER** to select TUNER mode.
→ "TUNER" is displayed. A few seconds later, the current radio frequency will appear on the display.
- 2 Press **TUNER** again to select the desired waveband : FM or MW.
- 3 Press and hold **ALBUM +/- <<>>** until the frequency indication starts to change, then release.
→ The display will show a radio station with sufficient signal strength is found.
- 4 Repeat step 3 if necessary until you find the desired radio station.
- To tune to a weak station, press **ALBUM +/- <<>>** briefly and repeatedly until optimal reception found.

Storing preset radio stations

You can store up to 40 preset radio stations in the memory.

Automatic Preset Programming

- Plug and Play setting (refer to "Basic Functions - Plug and Play").
- OR

- 1 Press **TUNER** to select TUNER mode.

To begin automatic preset from a desired preset number

- Press **TITLE +/- <</>> PRESET** to select the desired preset number.
→ If a radio station has been stored in one of the presets, it will not be stored again under another preset number.
- 2 Press and hold **PROGRAM** until "AUTO" is displayed.
→ **PROG** starts flashing.
→ All available radio stations with sufficient signal strength will be stored automatically, starting from FM and followed by MW band.
→ When all the available radio stations are stored or the memory for 40 presets are used, the first preset radio station will be played.

To stop storing the automatic preset

- Press **PROGRAM** or **STOP** on the system.

Note:

— If no preset number is selected, automatic preset will begin from preset (1) and all your former presets will be overridden.

Manual Preset Programming

- 1 Tune to your desired radio station (refer to "Tuning to radio stations").
- 2 Press **PROGRAM**.
 - **PROG** starts flashing.
 - The next available preset number is displayed for selection.

To store the radio station to another preset number

- Press **TITLE** **+/+** **◀/▶** **PRESET** to select the desired preset number.
- 3 Press **PROGRAM** again to store the radio station.
 - **PROG** disappears.
- Repeat **steps 1–3** to store other radio stations.

Notes:

- If you attempt to store more than 40 preset radio stations, "FULL" is displayed.
- During programming, if no key is pressed within 10 seconds, the system will exit the programme mode automatically.

Tuning to preset radio stations

- Once you've programmed the radio stations, press **TITLE** **+/+** **◀/▶** **PRESET** to select the desired preset number.
 - The preset number, radio frequency, and waveband are displayed.

Changing tuning grid *(not available for all versions)*

In North and South America, the frequency step between adjacent channels in the MW band is 10 kHz (9 kHz in some areas).

Changing the tuning grid will erase all previously stored preset radio stations.

- 1 Disconnect the system from the AC power supply (pull out the AC power cord).
- 2 While holding down **CD** and **▶ II** on the system, reconnect the system to the AC power supply.
 - The display will show "GRID 9" or "GRID 10".

Notes:

- GRID 9 and GRID 10 indicate that the tuning grid is in step of 9 kHz and 10 kHz respectively.
- The FM tuning grid also will be changed from 50 kHz to 100 kHz or vice versa.

External Sources

Connecting external equipment

- 1 Connect the audio out terminals of the external equipment (TV, VCR, Laser Disc player, DVD player or CD Recorder) to the **AUX** terminals of your system.
- 2 Press **AUX** to select external equipment.
→ "AUX" is displayed.

Note:

- All the sound control features (DSC or DBB, for example) are available for selection.
- Refer to the operating instructions for the connected equipment for details.

Using a USB mass storage device

By connecting a USB mass storage device to the Hi-Fi system, you can enjoy the device's stored music through the powerful speakers of Hi-Fi system.

Playing a USB mass storage device

Compatible USB mass storage devices

With the Hi-Fi system, you can use:

- USB flash memory (USB 2.0 or USB1.1)
- USB flash players (USB 2.0 or USB1.1)
- memory cards (requires an additional card reader to work with this Hi-Fi system)

Note:

– In some USB flash players (or memory devices), the stored contents are recorded using copyright protection technology. Such protected contents will be unplayable on any other devices (such as this Hi-Fi system).

– Compatibility of the USB connection on this product:

- a) This product supports most USB Mass storage devices (MSD) that are compliant to the USB MSD standards.
 - i) Most common Mass storage class devices are flash drives, memory sticks, jump drives and etc.
 - ii) If you see a "Disc Drive" show up on your computer after you plugged the mass storage device into your computer, most likely it is MSD compliant and it will work with this product.
- b) If your Mass storage device required a battery/power source. Please make sure you have a fresh battery in it or charge the USB device first and then plug it into the product again.

– **Supported Music type:**

- a) This device only supports unprotected music with the following file extension:
.mp3
.wma
 - b) Music bought from on-line music stores are not supported because they are secured by Digital Rights Management protection (DRM).
 - c) File name extensions that end with the following are not supported:
.wav, .m4a, .m4p, .mp4, .aac and etc.
- **No Direct connection can be made from Computer USB port to the product even you have either or both mp3 or wma files in your computer.**

Supported formats:

- USB or memory file format FAT12, FAT16, FAT32 (sector size: 512 - 65,536 bytes)
- MP3 bit rate (data rate): 32-320 Kbps and variable bit rate
- WMA v9 or earlier
- Directory nesting up to a maximum of 8 levels
- Number of albums/ folders: maximum 99
- Number of tracks/titles: maximum 999
- ID3 tag v2.0 or later
- File name in Unicode UTF8 (maximum length: 128 bytes)

The system will not play or support the following:

- Empty albums: an empty album is an album that does not contain MP3/WMA files, and will not be shown in the display.
- Non-supported file formats are skipped. This means that e.g.: Word documents .doc or MP3 files with extension .dlf are ignored and will not be played.
- AAC, WAV, PCM audio files
- DRM protected WMA files
- WMA files in Lossless format

How to transfer music files from PC to a USB mass storage device

By dragging and dropping music files, you can easily transfer your favorite music from PC to a USB mass storage device.

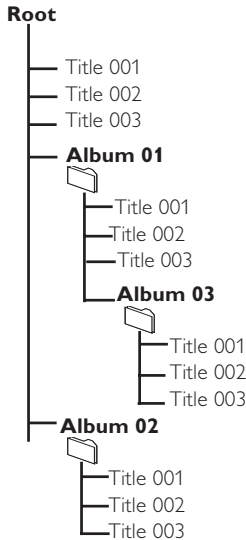
For the flash player, you can also use its music management software for the music transfer:

However, those WMA files may be unplayable for compatibility reasons.

How to organize your MP3/WMA files on the USB mass storage device

This Hi-Fi system will browse the MP3/WMA files in the folders/sub-folders/titles order.

Example:



Organize your MP3/WMA files in different folders or subfolders as required.

Notes:

- If you have not organized MP3/WMA files into any albums on your disc, an album "00" will be automatically assigned for all those files.
- Make sure that the file names of MP3 files end with .mp3. and the file names of WMA files end with .wma.
- For DRM protected WMA files, use Windows Media Player 10 (or later) for conversion. Visit www.microsoft.com for details about Windows Media Player and WM DRM (Windows Media Digital Rights Management).

- 1 Check the USB device has been properly connected. (See Installation: Connecting an additional appliance).
- 2 Press **USB** to select USB source.
 - **NO AUDIO** appears if no audio file is found in the USB device.
- 3 Play the USB's audio files as you do with the albums/tracks on a CD (See CD/MP3 Operations).



Notes:

- For compatibility reasons, the album/track information may differ from what it is displayed through flash players' music management software.
- File names or ID3 tags will be displayed as — if they are not in English.

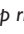
External Sources

Ripping function

This function enables you to record music to a connected USB mass storage device from any other source (i.e., DISC, TUNER, or AUX) without interrupting your enjoyment of the music.

- 1 Insert a USB mass device with sufficient free space to the **USB DIRECT**  socket on the set.
- 2 Prepare the source to record from.
DISC - load the disc(s). Select the disc to record from. Then, select a track where ripping will start (See "CD/MP3-CD Operations": "Selecting a desired track/passage" and "Selecting a desired Album/Title (MP3/WMA disc only)").
TUNER - tune to the desired radio station (See "Radio Reception": "Tuning to radio stations" and "Tuning to preset radio stations").
AUX - connect external equipment.
- 3 Press **USB RECORD** to start ripping.
 → "USB REC" will start flashing on the display.
 → In the DISC mode, "RIPPING ONE" will scroll once.
- In the DISC mode, to record all tracks starting from the one you selected, press **USB RECORD** again.
 → "RIPPING ALL" will scroll once. "ALL" and "USB REC" will start flashing on the display.
- 4 At any moment, simply press **STOP**  to stop ripping.

Notes:

- This function can also be combined with the programme function. In this case, selection of "RIPPING ALL" in DISC mode will record all programmed tracks from the starting point to the USB mass storage device.
- It is impossible to rip from "MIC IN".
- Never unplug the USB mass storage device before pressing **STOP**  to stop ripping.
- In the DISC mode, when you stop ripping or the free space is insufficient, the current track being ripped will not be recorded to your USB mass storage device and the playback will stop at the same time.
- During ripping, it is impossible to select any other source or track (radio station) or even switch the set to standby mode.

To delete a track/album from your USB mass storage device

- 1 Plug in the USB mass storage device.
- 2 Select the track/album to be deleted during playback.
- 3 Press **USB DELETE**.
 → "Delete track -- yes or no" is displayed for deleting a track.
 → "Delete album -- yes or no" is displayed for deleting an album.
- 4 Press **USB DELETE** again before "deleting" disappears to confirm the deletion.

Tuner record timer setting

This function enables you to set a timer for starting and stopping ripping from the tuner source automatically.

IMPORTANT!

– Before setting the timer, ensure that the clock is set correctly.

- 1 Tune to the station you desire to record from. (See "Radio Reception": "Tuning to radio stations" and "Tuning to preset radio stations").
- 2 Go to the standby mode. Then, press and hold **CLOCK•TIMER** on the system for more than two seconds to select timer mode.
→ The last timer setting starts flashing.
→ The selected source will be lighted.
- 3 Press **TUNER** to select TUNER mode.
- 4 Press **USB RECORD** to enable USB recording.
→ "ST" appears. "USB REC" and the hour and minute digits for the start timer start flashing.
- To cancel USB record setting, press **USB RECORD** again until "ST" and "USB REC" disappear.
→ In this case, you can only continue to set the system switch-on timer. (See "Clock/Timer": "Timer setting".)
- 5 Press **ALBUM -/+ ◀▶** repeatedly to set the hour for the timer to start.
- 6 Press **TITLE -/+ ◀▶** repeatedly to set the minute for the timer to start.
→ "ET" appears. the hour and minute digits for the sleep timer (12 hours later than the start timer by default) start flashing.
- 7 Press **ALBUM -/+ ◀▶** repeatedly to set the hour for the timer to stop.
- 8 Press **TITLE -/+ ◀▶** repeatedly to set the minute for the timer to stop.
- 9 Press **CLOCK•TIMER** to store the set tuner record timer.
→ The ripping will start at the set start time and end at the set stop time.

Notes:

- It is impossible to set a sleep timer more than 12 hours later than the start timer.
- During timer setting, if no button is pressed within 60 seconds, the system will exit timer setting mode automatically.

To deactivate the TIMER

- Press **SLEEP/TIMER** on the remote control.
→  disappears from the display.

To activate the TIMER

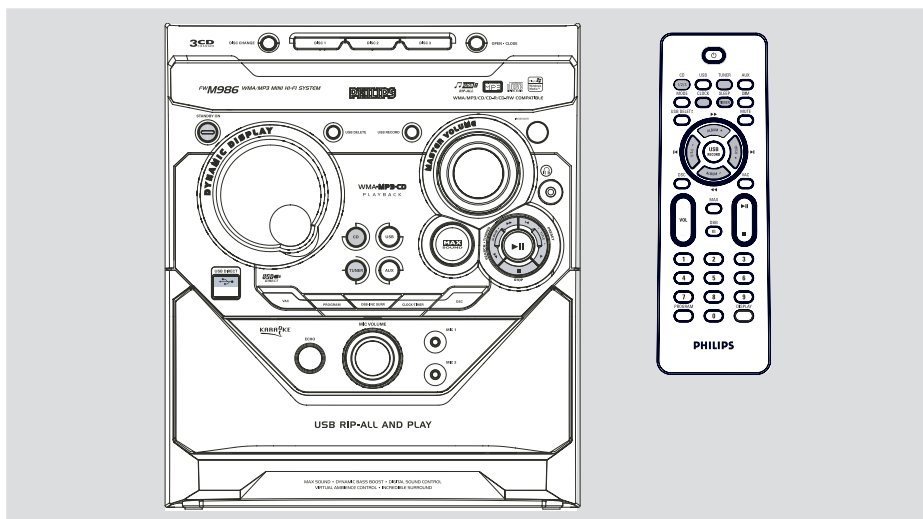
- Press **SLEEP/TIMER** on the remote control.
→  appears on the display.

To view the set record timer

- 1 In the standby mode, press and hold **CLOCK•TIMER** on the remote control to view the start timer setting.
- 2 Press **CLOCK•TIMER** on the remote control again to view the sleep timer setting.

To view remaining time during ripping

- After the tuner record timer starts, press **SLEEP/TIMER** on the remote control to view the remaining time of ripping.
- To cancel the sleep timer, press **SLEEP/TIMER** repeatedly until "00" appears.



View clock

The clock (if it is set) will be shown in standby mode.

To view the clock in any source mode (CD or TUNER for example)

- Press **CLOCK•TIMER** (or **CLOCK** on the remote control).
 - The clock is displayed for a few seconds.
 - If the clock has not been set, "--:--" is displayed.

To exit without storing the setting

- Press **STOP** ■ on the system.

Notes:

- The clock setting will be cancelled when the power cord is disconnected or if a power failure occurs.
- During clock setting, if no button is pressed within 25 seconds, the system will exit clock setting mode automatically.

Clock setting

The clock can be set in 24-hour mode.

- 1 In standby mode, press **CLOCK•TIMER** (or **CLOCK** on the remote control) once.
- 2 Press **ALBUM** +/- ◀▶ repeatedly to set the hour.
- 3 Press **TITLE** +/- ◀▶ repeatedly to set the minute.
- 4 Press **CLOCK•TIMER** (or **CLOCK** on the remote control) again to store the setting.
 - The clock starts working.

Timer setting

The system can switch on to CD, TUNER, or USB mode automatically at a preset time, serving as an alarm to wake you up.

IMPORTANT!

- Before setting the timer, ensure that the clock is set correctly.
- The timer will always be switched on after it has been set.
- The timer will not start if a recording is in progress.
- The volume of the timer will increase gradually from the minimum level to the last tuned volume level.

- 1 In standby mode, press and hold **CLOCK•TIMER** for more than two seconds to select timer mode.
 - The last timer setting starts flashing.
 - The selected source will be lighted and flashing.
- 2 Press **CD**, **TUNER** or **USB** to select the desired source.
- Before setting timer; make sure the music source has been prepared.
 - CD** – Load the disc(s). To start from a specific track, make a programme (refer to "CD Operation - Programming the disc tracks").
 - TUNER** – tune to the desired radio station.
 - USB** – connect a USB device .
- 3 Press **ALBUM** **-/+** **<< >>** repeatedly to set the hour for the timer to start.
- 4 Press **TITLE** **-/+** **|< / >|** repeatedly to set the minute for the timer to start.
- 5 Press **CLOCK•TIMER** to store the start time.
- At the preset time, the selected source will play.

To exit without storing the setting

- Press **STOP** **■** on the system.

Notes:

- When the preset time is reached and the selected disc tray is empty, the next available disc will be selected. If all the disc trays are not available, Tuner will be selected automatically.
- During timer setting, if no button is pressed within 25 seconds, the system will exit timer setting

mode automatically.

To deactivate the TIMER

- Press **SLEEP/TIMER** on the remote control.
 - The display will show "OFF" and **TIMER** will disappear from the display.

To activate the TIMER

- Press **SLEEP/TIMER** on the remote control.
 - The last set timer information will be shown for a few seconds and **TIMER** will appear on the display.

Sleep timer setting

The sleep timer enables the system to switch to standby mode automatically at a preset time.

- 1 In active mode, press **SLEEP/TIMER** on the remote control repeatedly to select a preset time.
 - The selections are as follows (time in minutes):
 15 → 30 → 45 → 60 → 90 → 120 → OFF
 → 15 ...
 → "SLEEP XX" or "SLEEP OFF" is displayed.
 "XX" is the time in minutes.
- 2 When you reach the desired length of time, stop pressing the **SLEEP/TIMER** button.
 - **SLEEP** is shown, except for "SLEEP OFF" mode.

To check the remaining length of time after sleep timer is activated

- Press **SLEEP/TIMER** once.

To change the preset sleep timer

- Press **SLEEP/TIMER** again while the remaining sleep timer is shown.
 - The display will show the next sleep timer options.

To deactivate the sleep timer

- Press **SLEEP/TIMER** repeatedly until "SLEEP OFF" is displayed, or press **STANDBY ON** **⏻**.

Specifications

AMPLIFIER

Total output power.....	1200W
Front	250Wx2 per channel
Rear	100Wx2 per channel
Subwoofer	250Wx2 per channel
Signal-to-noise ratio	60 dBA (IEC)
Frequency response	50 – 18000 Hz
Input sensitivity	
AUX	1000/2000 mV
Output	
Headphones	32 Ω
(1) (3 Ω , 1 kHz, 10%THD)	

CD/MP3-CD PLAYER

Number of programmable tracks	99
Frequency response	50 – 20000 Hz -3dB
Signal-to-noise ratio	60 dBA
Channel separation	35 dBA (1 kHz)
Total harmonic distortion	< 1%
MPEG 1 Layer 3 (MP3-CD)	MPEG AUDIO
MP3-CD bit rate	32-256 kbps
	(128 kbps advised)
Sampling frequencies	32, 44.1, 48 kHz

TUNER

FM wave range	87.5 – 108 MHz
MW wave range (9 kHz)	531 – 1602 kHz
MW wave range (10 kHz)	530 – 1700 kHz
Tuning grid	9/10 kHz
Number of presets	40
Antenna	
FM	75 Ω wire
MW	Loop antenna

USB PLAYER

USB	12 Mb/s, V1.1
.....	support MP3 and WMA files
Number of albums/folders	maximum 99
Number of tracks/titles	maximum 400

FRONT SPEAKER

System full range satellite	
Impedance	5 Ω
Speaker drivers	2x6.5" 250w woofer
.....	2x2" 250w tweeter
Frequency response	50Hz-20KHz
Dimensions(w x h x d)	235 x 457.3 x 263.5
Weight	12.47kg/1paa

REAR SPEAKER

System full range satellite	
Impedance	8 Ω
Speaker driver	2x4" 100w full-range speaker
Frequency response	50Hz-20KHz
Dimensions(w x h x d)	140 x 311 x 250
Weight	5.34kg/1paa

SUBWOOFER

Impedance	5 Ω
Subwoofer drivers	10" 250w woofer
Frequency response	45Hz-150Hz
Dimensions(w x h x d)	303 x 455 x 360.3
Weight	20.74kg/1paa

GENERAL

Material/finish	Polystyrene/Metal
AC Power	110 – 127 / 220 – 240 V
.....	50/60 Hz Switchable
Power Consumption	
Active	90 W
Standby	\leq 15 W
Dimensions (w x h x d) ..	265 x 310 x 367 (mm)
Weight (without speakers)	5.6 kg

Specifications and external appearance are subject to change without notice.

Maintenance

Cleaning the Cabinet

- Use a soft cloth slightly moistened with a mild detergent solution. Do not use a solution containing alcohol, spirits, ammonia or abrasives.

Cleaning Discs

- When a disc becomes dirty, clean it with a cleaning cloth. Wipe the disc from the centre out.
- Do not use solvents such as benzene, thinner, commercially available cleaners, or antistatic spray intended for analogue records.



Cleaning the disc lens

- After prolonged use, dirt or dust may accumulate at the disc lens. To ensure good playback quality, clean the disc lens with Philips CD Lens Cleaner or any commercially available cleaner. Follow the instructions supplied with cleaner.

Troubleshooting

WARNING

Under no circumstances should you try to repair the system yourself, as this will invalidate the warranty. Do not open the system as there is a risk of electric shock.

If a fault occurs, first check the points listed below before taking the system for repair. If you are unable to remedy a problem by following these hints, consult your dealer or Philips for help.

Problem	Solution
"NO DISC" is displayed.	<ul style="list-style-type: none"> ✓ Insert a disc. ✓ Check if the disc is inserted upside down. ✓ Wait until the moisture condensation at the lens has cleared. ✓ Replace or clean the disc, see "Maintenance". ✓ Use a finalized CD-RW or a correct MP3-CD format disc.
"DISC NOT FINALIZED" is displayed.	<ul style="list-style-type: none"> ✓ Use a finalised CD-RW or CD-R.
Some files on the USB device are not displayed.	<ul style="list-style-type: none"> ✓ Check if the number of folders exceeds 99 or the number of titles exceeds 400.

Troubleshooting

"DEVICE NOT SUPPORTED" scrolls on the display.

Radio reception is poor.

The system does not react when buttons are pressed.

Sound cannot be heard or is of poor quality.

The left and right sound outputs are reversed.

The remote control does not function properly.

The time is not working.

Not all lighted buttons are showing light.

The Clock/Timer setting is erased.

The system displays features automatically and buttons start flashing.

- ✓ Remove the USB mass storage device or select another source.
- ✓ If the signal is too weak, adjust the antenna or connect an external antenna for better reception.
- ✓ Increase the distance between the Mini HiFi System and your TV or VCR.
- ✓ Remove and reconnect the AC power plug and switch on the system again.
- ✓ Adjust the volume.
- ✓ Disconnect the headphones.
- ✓ Check that the speakers are connected correctly.
- ✓ Check if the stripped speaker wire is clamped.
- ✓ Make sure the MP3-CD was recorded within 32-256 kbps bit rate with sampling frequencies at 48 kHz, 44.1 kHz or 32 kHz.
- ✓ Check the speaker connections and location.
- ✓ Select the source (CD or TUNER, for example) before pressing the function button (▶||).
- ✓ Reduce the distance between the remote control and the system.
- ✓ Insert the batteries with their polarities (+/- signs) aligned as indicated.
- ✓ Replace the batteries.
- ✓ Point the remote control directly towards the IR sensor.
- ✓ Set the clock correctly.
- ✓ Press and hold **CLOCK • TIMER** to switch on the timer.
- ✓ If recording is in progress, stop recording.
- ✓ Press **DIM** to select DIM OFF display mode.
- ✓ Power has been interrupted or the power cord has been disconnected. Reset the clock/timer.
- ✓ Press and hold ■ on the system to switch off the demonstration.

POLIZA DE GARANTIA PARA MEXICO

ESTA POLIZA ES GRATUITA

Este aparato ha sido cuidadosamente diseñado y se ha fabricado con los mejores materiales bajo un estricto control de calidad, garantizando su buen funcionamiento por los periodos establecidos según el aparato (ver lista en la parte inferior) **a partir de la entrega del aparato al consumidor.**

Esta póliza incluye la reparación o reposición gratuita de cualquier parte o componente que eventualmente fallase y la mano de obra necesaria para su reparación, así como los gastos de traslado razonablemente erogados dentro de nuestros centros de servicio, misma que se hará efectiva en cualquiera de nuestros centros de servicio autorizados en el país.

Si su aparato llegase a requerir de nuestro servicio de garantía, acuda al centro de servicio más cercano a su domicilio, de tener alguna duda por favor llame a nuestro **CENTRO DE INFORMACIÓN AL CLIENTE LADA** sin costo en toda la republica al **01 800 504 62 00** en donde con gusto le indicaremos el centro de servicio autorizado más cercano a su domicilio.

PHILIPS MEXICANA S.A. de C.V. a través de sus centros de servicio autorizados reparará y devolverá a usted su aparato en un plazo no mayor a 20 días hábiles, contados a partir de la fecha de ingreso, impresa en la orden de servicio de cualquiera de nuestros centros de servicio autorizados.

La garantía de esta póliza cubre cualquier desperfecto o daño eventualmente ocasionado por los trabajos de reparación y/o traslado del aparato en el interior de nuestros centros de servicio autorizados.

Esta póliza sólo tendrá validez, si está debidamente requisitada, sellada por la casa vendedora, en caso de extravío de esta póliza, podrá hacer efectiva su garantía con la presentación de su factura de compra.

ESTA POLIZA NO SE HARA EFECTIVA EN LOS SIGUIENTES CASOS:

-Cuando el aparato sea utilizado en condiciones distintas a las normales.

-Cuando el aparato no haya sido operado de acuerdo con el instructivo de uso que se le acompaña.

-Cuando la causa de la falla o mal funcionamiento sea consecuencia de una reparación inadecuada o alteración producida por personas no autorizadas por PHILIPS MEXICANA S.A. de C.V.

PERIODOS DE GARANTIA

36 MESES.- Monitores para computadora.

12 MESES.- Televisores con y sin reproductor de video digital DVD, videocassetteras, reproductores de discos de video digital DVD, reproductores de disco de video digital con pantalla incluida, grabadores reproductores de disco de video digital DVD, grabadores reproductores de disco compacto, Radiograbadoras con y sin reproductor de disco compacto, reproductores de disco compacto portátil, video proyectores (excepto la lámpara) , cámaras de video, decodificadores de señal (IRD), televisores para hotel, sistemas de observación, televisores de proyección, teléfonos celulares, pagers, minisistemas de audio, minisistemas de audio con reproductor de disco de video digital integrado, microsistemas de audio, sistemas de cine en casa, sistemas reproductores de disco de video digital, equipos modulares, sintonificadores, facsímils, LNB, antenas de recepción de satélite, DVD ROM, CDR ROM y CDRW ROM para computadora.

6 MESES.- reproductores de cassette portátil, radio relojes, radios A.M./F.M., reproductores de audio digital MP3 (Internet), auto estéreos, teléfonos, teléfonos inalámbricos, cámaras digitales.

3 MESES.- Accesorios, controles remotos, bocinas, cintas para fax y para cámaras de videoconferencia, micrófonos, audífonos.

PHILIPS

Philips Mexicana, S.A. de C.V.

Producto Importado por: Philips Mexicana, S.A. de C.V.

Av. La Palma No.6
Col. San Fernando La Herradura
Huixquilucan, Edo, de México, C.P. 52784
Tel. 52 69 90 00

Centro de Información al Cliente Información General

LADA SIN COSTO PARA TODA LA REPUBLICA
01 800 504 62 00
CORREO ELECTRONICO
philips@merkafon.com

MODELO _____ No. DE SERIE _____
La presente garantía contará a partir de: DIA _____ MES _____ AÑO _____

En caso que en su producto presente alguna falla, acuda al centro de servicio más cercano a su domicilio (según listado de talleres anexo) y en caso de tener alguna duda o pregunta por favor llame a nuestro

Centro de información al Cliente, en donde con gusto le atenderemos en todo lo relativo a:

- * Servicio de sus aparatos Philips
- * Información de productos y Talleres Autorizados Philips
- * Asesoría en el manejo e instalación de su producto Philips
- * Información en donde puede adquirir productos y accesorios Philips

Para hacer efectiva la garantía de su producto, es necesario presentar esta póliza debidamente requisitada o de lo contrario, presentar su factura de compra.

CENTROS DE SERVICIO AUTORIZADOS PHILIPS EN LAS PRINCIPALES CIUDADES

NOTA: Los Centros que tengan (S) solo proporcionan Servicio y los que tengan (SR) venden refacciones, accesorios y proporcionan Servicio

CIUDAD	LADA	TELEFONO	CORREO ELECTRONICO		CIUDAD	LADA	TELEFONO	CORREO ELECTRONICO	
ACAPULCO, GRO	744	483-32-96	serproa@yahoo.com.mx	S	MEXICO, D. F.	55	55-67-19-92 55-67-22-56	chyr_electronica@yahoo.com.mx	S
AGUASCALIENTES, AGS	449	915-51-81	jmsaele@hotmail.com	S	MEXICO, D. F.	55	57-58-89-37	cnoguedam@terra.com.mx	S
CAMPECHE, CAMP.	981	816 25 75	oreza@hotmail.com	S	MEXICO, D. F.	55	58 12 44 12	raulmtzm@avante1.net	S
CANCUN, Q ROO.	998	984 18 74	gammacancun@webtelmex.net.mx	S	MONTERREY, N.L.	818	375-16-17 400-54-03	mcesa@prodigy.net.mx	S
CD. JUAREZ, CHIH	656	618-21-28 623-46-20	teleservicio@prodigy.net.mx	S	MORELIA, MICH	443	312-03-17	multiservicios_profesionales_de_zamora@msn.com	S
CD. OBREGON, SON	644	412-41-51 416-20-93	mena747@prodigy.net.mx	S	NEZAHUALCOYOTL EDO. MEX	55	57-33-34-98	vicentegutierrez@prodigy.net.mx	S
CD. VICTORIA, TAMPS	834	315-66-03 312-51-93	eei_smiller@yahoo.com.mx	S	OAXACA, OAX	951	516-47-37	elfrancistor@prodigy.net.mx	S
COLIMA, COL	312	314-03-01	tv_antenas@hotmail.com	S	ORIZABA, VER	272	724 38 53	barreda_electronics@hotmail.com	S
CUERNAVACA, MOR	777	313-00-49 313-90-32	centroserviciohertz@hotmail.com	S	PACHUCA, HGO	771	714-15-81	zarateest@hotmail.com	S
CULIACAN, SIN	667	716-15-10	stereovox@chm.megared.net.mx	S	POZA RICA, VER	782	824 47 82	sonydigital@prodigy.net.mx	S
CHIHUAHUA, CHIH	614	421-59-30 421-63-61	comercialdomestica@hotmail.com	S	PUEBLA, PUE	222	248-77-64 231-63-77	rascon12@prodigy.net.mx	S
CHILPANCIINGO, GRO.	747	471 72 73	ingetec_gro@hotmail.com	S	QUERETARO, GRO	442	216-10-09		S
DURANGO, DGO	618	825-00-05	evsurdgo@yahoo.com	S	SALTILLO, COAH	844	415 35 80	electronicadigital_07@hotmail.com	S
GUADALAJARA, JAL	33	36-15-72-62 36-16-83-27	www. Leecom.com.mx	S	SAN LUIS POTOSI, S.L.P	444	815-34-07	centro_servicioslp@prodigy.net.mx	S
HERMOSILLO, SON	662	210-54-95 210-05-86	manuelw@prodigy.net.mx	S	SATELITE, EDO. MEX	55	55 62 59 73	missus_satellite@hotmail.com	S
IRAPUATO, GTO	462	626-51-10	tv_gase@hotmail.com	S	TAMPICO, TAMPS	833	214 13 60	electronmovie@prodigy.net.mx	S
LA PAZ, B.C.S	612	122-95-99	cenatfa@prodigy.net.mx	S	TEPIC, NAY	311	212-66-93	spe_tv@hotmail.co	S
LEON, GTO	477	770-26-99	tec ESPECIALIZADOS@hotmail.com	S	TIJUANA, B.C.N	664	621-22-15	www.eg1@telnor.net	S
MATAMOROS, TAMPS	868	813-50-13	digitalelectronica@comunicable.net	S	TOLUCA, EDO. MEX	722	214-83-09		S
MAZATLAN, SIN	669	982-42-21	e_santel@hotmail.com	S	TOLUCA, EDO. MEX	722	213 62 94		S
MERIDA, YUC	999	928-59-05	evia2@prodigy.net.mx	S	TORREON, COAH	871	732-49-49	jomar02@prodigy.net.mx	S
MEXICALI, B.C.N	686	561-98-08 561-98-18	bajaelectronics@aol.com	S	TUXTLA GUTIERREZ, CHIS	961	618-19-08	kcvideo@prodigy.net.mx	S
MEXICO D.F., ZONA ARAUCO	55	57 94 06 34	philipservicio@hotmail.com	S	URUAPAN, MICH	452	524-06-38 524-37-78	rosaliaq@mich1.telmex.net.mx	S
MEXICO D.F., ZONA CENTRO	55	55 21 60 07	unitemex@yahoo.com.mx	SR	VERACRUZ, VER	229	932-78-23 932-44-44	antza@ver.megared.net.mx	S
MEXICO, D. F. ZONA SUR	55	55-36-71-03 55-36-25-75	centroservicioelectronico@hotmail.com	S	VILLAHERMOSA, TAB	993	314-31-36 314-61-67	villate@intrasar.net.mx	S
MEXICO, D. F. ZONA NORTE	55	53 68 30 21	tissaser@prodigy.net.mx	S	ZACATECAS, ZAC.	492	922 31 63	sertecmur@hotmail.com	S

Para mayor referencia de Talleres de Servicio Autorizados en otras ciudades comunicarse al 01 800 504 62 00 (lada sin costo)

Certificado de Garantía en Argentina

Artefacto:

**Fabricante/Importador: Philips Argentina S.A.
y/o Fábrica Austral de Productos Eléctricos S.A.**

Dirección: Vedia 3892 - Buenos Aires

Fecha de Venta:

Modelo:

	Nro. de serie
--	----------------------

Firma y sello de la casa vendedora.

PHILIPS ARGENTINA S.A. en adelante denominada “la empresa”, garantiza al comprador de este artefacto por el término de (6) meses a partir de la fecha de adquisición, el normal funcionamiento contra cualquier defecto de fabricación y/o vicio de material, y se compromete a reparar el mismo —sin cargo alguno para el adquirente— cuando el mismo fallare en situaciones normales de uso y bajo las condiciones que a continuación se detallan:

1. Este certificado de garantía es válido únicamente en la Republica Argentina. El certificado debe ser completado por la casa vendedora y ser presentado por el usuario conjuntamente con la factura original de compra.
2. Serán causas de anulación de esta garantía en los casos que corresponda:
 - 2.1. Uso impropio o distinto del uso doméstico.
 - 2.2. Exceso o caídas de tensión eléctrica que impliquen uso en condiciones anormales.
 - 2.3. Instalación y/o uso en condiciones distintas a las marcadas en el “Manual de instalación y uso” que se adjunta a esta garantía.
 - 2.4. Cualquier intervención al artefacto por terceros no autorizados por la empresa.
3. La garantía carecerá de validez si se observare lo siguiente:
 - 3.1. Enmiendas o raspaduras en los datos del certificado de garantía o factura.
 - 3.2. Falta de factura original de compra que detalle tipo de artefacto, modelo, número de serie y fecha que coincida con los del encabezamiento del presente certificado.
4. No están cubiertos por esta garantía los siguientes casos:
 - 4.1. Los daños ocasionados al exterior del gabinete.
 - 4.2. Las roturas, golpes, caídas o rayaduras causadas por traslados.
 - 4.3. Los daños o fallas ocasionados por deficiencias, sobretensiones, descargas o interrupciones del circuito de alimentación eléctrica o rayos, deficiencias en la instalación eléctrica del domicilio del usuario o conexión del artefacto a redes que no sean las especificadas en el Manual de Uso del mismo.
 - 4.4. Las fallas, daños, roturas o desgastes producidos por el maltrato o uso indebido del artefacto y/o causadas por inundaciones, incendios, terremotos, tormentas eléctricas, golpes o accidentes de cualquier naturaleza.
 - 4.5. Las fallas o daños ocasionados en desperfectos en la línea telefónica.
 - 4.6. Las fallas producidas por una mala recepción ocasionada en el uso de una antena deficiente o en señales de transmisión débiles.
5. Las condiciones de instalación y uso del artefacto se encuentran detalladas en el Manual de Uso del mismo.
6. La empresa no asume responsabilidad alguna por los daños personales o a la propiedad al usuario o a terceros que pudieran causar la mala instalación o uso indebido del artefacto, incluyendo en este último caso a la falta de mantenimiento.
7. En caso de falla, el usuario deberá requerir la reparación a la empresa a través del Service Oficial y/o Talleres Autorizados más próximos a su domicilio y cuyo listado se acompaña al presente. La empresa a segura al usuario la reparación y/o reposición de piezas para su correcto funcionamiento en un plazo no mayor a 30 días contados a partir de la fecha de solicitud de reparación, salvo caso fortuito o fuerza mayor.

8. Toda intervención del servicio técnico realizada a pedido del usuario dentro del plazo de garantía, que no fuera originada por falla o defecto alguno cubierto por este certificado, deberá ser abonado por el interesado de acuerdo a la tarifa vigente.
9. El presente certificado anula cualquier otra garantía implícita o explícita, por la cual y expresamente no autorizamos a ninguna otra persona, sociedad o asociación a asumir por nuestra cuenta ninguna responsabilidad con respecto a nuestros productos.
10. En caso de que durante el período de vigencia de esta garantía el artefacto deba ser trasladado a las Delegaciones Oficiales y/o Talleres Autorizados de Service para su reparación, el transporte será realizado por la empresa y serán a su cargo los gastos de flete y seguros y cualquier otro que deba realizarse para su ejecución.



PHILIPS

Red de Talleres Autorizados en Argentina

CAPITAL FEDERAL

ATTENDANCE S.A.

- Av. Monroe 3351 (C1430BKA) Cap. Fed.
- Tel.: 4545-5574/0704 ó 6775-1300
- Ventas de Repuestos y Accesorios
- Tel.: 4545-0854

DIG TRONIC

- Av. San Martín 1762 (C1416CRS) Cap. Fed.
- Tel.: 4583-1501

ELECTARG S.R.L.

- Av. Córdoba 1357 (C1055AAD) Cap. Fed.
- Ventas de Repuestos y Accesorios
- Tel.: 4811-1050

Caballito Electarg J. M. Moreno 287 4903-6967/6854/8983

BUENOS AIRES

Azul	Herlein Raúl Horacio	Av. 25 de Mayo 1227	(02281) 428719
Bahía Blanca	Neutron	Soler 535	(0291) 4535329
Bragado	Yacovino Juan J.	San Martín 2141	(02342) 421417
Campana	Electricidad Krautor	Lavalle 415	(03489) 432919
Chivilcoy	Fama	Coronel Suárez 110	(02346) 424129
Junín	Junín Service	Alsina 537	(02362) 442754
La Plata	Da Tos e Hijos	Calle 68 N° 1532	(0221) 4516021
La Plata	Service Técnico La Plata	Av. 51 N° 1051 esq. 16	(0221) 4108155
Mar de Ajó	Tauro Electrónica	Catamarca 14	(02257) 421750
Mar del Plata	Central Service	Olazábal 2249	(0223) 4721639/4729367
Mar del Plata	Service Integral	Diag. Pueyrredón 3229	(0223) 4945633
Necochea	Electrónica Camejo	Calle 63 N° 1745	(02262) 426134
Pehuajó	Calcagni Carlos Alberto	Zubiría 794	(02396) 472665
Pergamino	ACV Sistemas	Dr. Alem 758	(02477) 421177
Pergamino	El Service	Juan B. Justo 1931	(02477) 418000

San Nicolás	Servittec	Bv. Alvarez 148	(03461) 454729/429578
San Pedro	Electrónica Menisale	Mitre 1695	(03329) 425523
Tandil	Lazzarini Oscar Rafael	Pellegrini 524	(02293) 442167
Trenque Lauquen	Labruno Electrónica	Av. San Martín 426	(02392) 423248
Tres Arroyos	Saini Fabián y Sergio	Av. Belgrano 562	(02983) 427369
Zárate	Electrónica Spinuzzi	Ituzaingó 1030	(03487) 427353

GRAN BUENOS AIRES

Avellaneda	Casa Torres S.A.	Av. Mitre 2559	4255-5854
Florencio Varela	Casa Torres S.A.	San Martín 2574	4255-5854
Gregorio de Laferrere	Electrónica Alvarez	Honorio Luque 6084	4626-1322
Lomas de Zamora	Attendance S.A. Lomas	Laprida 485	4292-8900
Merlo	Argentronica S.H.	Pta. Cámpora 2175	(0220) 4837177/4829934
Moreno	Argentronica S.H.	Bméd. Mitre 2977 loc.2	(0237) 4639500
Morón	Servotronic	Ntra. Sra. del Buen Viaje 1222	4627-5656
Olivos	Appliance	Av. Libertador 2684	4794-7700
Quilmes	Casa Torres S.A.	E. Rios esq. Gran Canaria	4255-5854
Ramos Mejía	Electarg S.R.L. Suc.	Belgrano 224	4656-0619
San Miguel	Servotronic San Miguel	Belgrano 999	4664-4131
Villa Ballester	Servotronic	J. Hernández 3101	4767-2515/4768-5249

CATAMARCA

Catamarca	Omicron Central de Serv.	San Martín 225	(03833) 427235
-----------	--------------------------	----------------	----------------

CHACO

Resistencia	Freschi Jorge Oscar	Av. Avalos 320	(03722) 426030
-------------	---------------------	----------------	----------------

CHUBUT

Comodoro Rivadavia	C.A.S. S.R.L.	Alem 145	(0297) 4442629
Trelew	Fagtron Electrónica	Brasil 253	(02965) 427073

CORDOBA

Córdoba Capital	Servelco S.R.L.	Pje. E. Marsilla 635	(0351) 4724008/4732024
Rio Cuarto	Maurutto Victor G.	Bv. Almafuerde 487	(0358) 4660204
Rio Cuarto	Capaldi Abel	Paunero 832	(0358) 4623003
Rio Tercero	Service Omega	Homero Manzi 149	(03571) 423330
San Francisco	Acuña Walter Electrónica	M. Moreno 360	(03564) 425367
Villa María	Grasso Electrónica	Bv. Alvear 541	(0353) 4521366
Villa María	Vanguard Sist. Electrónicos	México 421	(0353) 4532951

Validez de la garantía

Todos los productos de la línea de audio y video Philips, se registrarán por un año de garantía internacional (365 días), salvo para Chile donde los productos de las líneas CD Portable y RCR CD, los cuales se rigen por 6 meses de garantía (182 días)

Condiciones de la garantía

Esta garantía perderá su validez si:

- El defecto es causado por uso incorrecto o en desacuerdo con el manual de instrucciones
- El aparato sea modificado, violado por una persona no autorizada por Philips
- El producto esté funcionando con un suministro de energía (red eléctrica, batería, etc.) de características diferentes a las recomendadas en el manual de instrucciones
- El número de serie que identifica el producto se encuentre de forma adulterada.

Están excluidos de garantía,

- Los defectos que se generen debido al incumplimiento del manual de instrucciones del producto
- Los casos fortuitos o de la fuerza mayor, como aquellos causados por agentes de la naturaleza y accidentes, descargas eléctricas, señales de transmisión débiles.
- Los defectos que se generen debido al uso de los productos en servicios no doméstico/residencial regulares o en desacuerdo con el uso recomendado
- Daños ocasionados por fluctuaciones de voltajes, voltaje fuera de norma o por causas fuera de Philips, como cortocircuitos en los bafles o parlantes.
- En las ciudades en donde no existe el taller autorizado del servicio de Philips, los costos del transporte del aparato y/o el técnico autorizado, corren por cuenta del cliente.
- La garantía no será válida si el producto necesita modificaciones o adaptaciones para que funcione en otro país que no es aquél para el cual fue mercadeado.

El único documento válido para hacer efectiva la garantía de los productos, es la Factura o Boleta de compra del consumidor final.

Aquellos productos que hayan sido adquiridos en otros países y que no estén en el rango normal del país donde se efectuará la reparación, dicha prestación de servicio tomará mas tiempo de lo normal ya que es necesario pedir las partes/piezas al centro de producción correspondiente.

Centros de información

Líneas de atención al consumidor

Chile: 600-7445477

Colombia: 01-800-700-7445

Costa Rica: 0800-506-7445

Ecuador: 1-800-10-1045

El Salvador: 800-6024

Guatemala: 1-800-299-0007

Panama: 800-8300

Peru: 0800-00100

Rep. Dominicana: 1-800-751-2673

Venezuela: 0800-100-4888

LISTA DE SERVIÇO AUTORIZADO - BRASIL

RUZEIRO DO SUL	68-33224432	BARRA S FRANCISCO	27-3562245	BELO HORIZONTE	31-3225722	PORTO TROMBETAS	93-35491606
	68-32217642	CASTELO	28-35240482	BELO HORIZONTE	28-35254066	SANTAREM	93-35253322
	68-32247616	COLATINA	27-37222288	BELO HORIZONTE	31-34420944		
LAGOAS		GUARAPARI	27-33614555	BELO HORIZONTE	31-34181919	PARAIBA	
	82-52222367	UNHARES	27-33701740	BELO HORIZONTE	31-32957800	CAMPINA GRANDE	83-32121238
	82-32417237	S GABRIEL DA PALHA	27-33727153	BELO HORIZONTE	31-34491000	ESPERANCA	83-36422273
ALMEIDA DOS INDÍOS	82-32413452	SÃO MATEUS	27-37633806	BELO HORIZONTE	31-32027373	GUARABIRA	83-2711159
	82-32181305	VILA VELHA	27-32891233	BETIM	31-35220828	JOÃO PESSOA	83-32466869
		VITORIA	27-32323899	BOM DESPACHO	37-35221296	JOÃO PESSOA	83-32446044
AMAPA		GOIÁS		BOM DESPACHO	37-35225211	JOÃO PESSOA	83-32210460
	96-21757934	ANAPOLIS	62-3243562	CARANGOLA	32-37412017	NOVA FLORESTA	83-3741014
	96-2811080	CACU	64-6561811	CASSIA	35-35412928	SAPÊ	83-28242979
ANANIAS		CALDAS NOVAS	46-4532878	CONGONHAS	31-37311638	SOLANEA	83-3631241
		CATALAO	46-4412786	CONS LAFAIETE	31-37637784		
		FORMOSA	61-6318166	CONTAGEM	31-33912994	PARANÁ	
ANANIAS	92-36330335	GOIANIA	62-32979095	CONTAGEM	31-33953461	AMPERE	46-5471605
	92-36633366	GUARAPUAVA	62-32292959	CONRÊL FABRICIANO	31-38411804	ANTONINA	41-34321782
	92-32324252	GOIATUBA	94-34952272	CURVELO	38-37213009	APUCARANA	46-34253526
AMIA		INHUMAS	62-5111840	DIVINÓPOLIS	32-32312353	ARAPONGAS	47-257372
		IPAMERI	62-4511184	FORMIGA	37-32321477	ASSIS CHATEAUBRIAND	44-5285181
	75-4211128	ITAPURANGA	62-3551484	FRUTAL	34-2325279	BANDEIRANTES	43-5421711
ARRAERREAS	77-36117592	ITUMBARA	64-3410837	GR. VALADARES	33-32716650	CAMPO MOURAO	44-35238970
		JUSSARA	62-3737806	GUAXUPÉ	35-35513891	CASCAVEL	43-35254005
		LUZIANIA	64-6238519	GUAXUPÉ	35-35516218	CIANORTE	44-5292842
AETITE	73-361381	MINÉRIOS	64-6618259	ITABIRA	31-38323234	CLUBE CURITIBA	43-3234764
	73-36218288	PIRES DO RIO	64-6611133	ITAJUBA	35-3621135	CURITIBA	41-32467891
	73-35282767	RIALMA	62-3973120	ITAPECERICA	37-33411326	FOZ DO IGUAÇU	41-32534391
ARANJADA	75-421454	RIO VERDE	62-3621013	ITAPECERICA	37-33411326	FOZ DO IGUAÇU	41-32534391
	73-2815181	TRINIDADE	62-5051055	ITALUNA	37-32412468	FRANCISCO BELTRAO	46-35232320
	73-3232082	URUAÇU	65-3571285	ITULI ALTA	34-23682313	GUARAPUAVA	46-36235325
BARRA DE SANTANA		MARANHÃO		JOAO MONLEVADE	31-38512909	IBATI	45-5461162
	73-3251664	ACAILANDIA	95-3538189	JOAO PINHEIRO	38-38612387	IBIPORA	45-2581863
	73-3215195	BACABAL	99-36212794	JUIZ DE FORA	30-35641524	IRATI	42-34221337
BEE	74-36410202	BALAS	99-5401113	JUIZ DE FORA	32-32155114	LOANDA	44-4235053
	73-35212358	CAROLINA	98-7311335	LAGOA DA PRATA	37-32613493	LONDRIINA	43-32141026
	73-36137777	CASIAS	99-35312377	LAJE	35-38319188	MANOEL JUAZI	44-221313
BEBINGA	73-2633003	CHAPADINHA	99-4711364	MANHUAÇU	33-33314735	MARINGA	43-32264620
	74-36211323	CODO	99-36611277	MONTE CARMELO	34-28422082	MEDIANEIRA	45-32645820
	73-35254141	COELHO NETO	99-36712942	MONTE SANTO DE MINAS	35-35911889	PALMEIRA	42-2523006
BAZEIRO	74-36116456	IMPERATRIZ	99-37361351	MONTE CLAROS	38-32218925	PARANAGUA	41-34225804
	73-36111002	IMPERATRIZ	95-35244699	MURIAE	32-37223434	PATO BRANCO	42-34227878
	73-36117777	PEDREIRA	96-36432149	NUZUMBIM	35-35151939	PONTA GROSSA	42-32645690
BAZIL DO AFOSSO	73-36119439	PRESIDENTE DUTRA	99-36637815	NAMQUÊ	36-36212165	RIO NEGRO	47-36460521
	75-33811349	SANTA INES	96-3635753	NOVA LIMA	31-35412026	ROLANDIA	43-2561947
	75-33811349	SÃO JOSE DE RIBAMAR	96-3635753	NOVA LIMA	31-35412026	ROLANDIA	43-2561947
BEIJA DO POMBAI	75-2761853	SÃO LUIS	98-32323236	OLIVEIRA	37-33314444	S J DOS PINHAIS	41-32825252
	71-32473659	SÃO LUIS	98-32323236	PARA DE MINAS	33-32316369	S MIGUEL DO IGUAÇU	45-5651429
	71-2475500	SÃO LUIS	98-32323236	PARA DE MINAS	37-32326795	SANTA FE	42-4471417
BELO HORIZONTE	37-32072000	MATO GROSSO		PARACATU	38-36711250	SÃO JOSE DO OESTE	46-5341305
	37-33356233	ALTA FLORESTA	66-35212460	PASSOS	35-35214648	SÃO ANTONIO PLATINA	47-36460521
	75-32413174	ALTO ARAUAGIA	66-4811726	PATOS DE MINAS	32-3822588	TELEMACO BORBA	47-32760404
BOFIM	54-5143143	BARRA DO GARGAS	66-4011394	PATROCINIO	34-38311531	TOLEDO	45-35252471
	75-32611794	CIJAS	66-3230421	PITANGUI	37-32716232	UMUARAMA	43-36231233
	75-36314070	CUABA DO RIO VERDE	65-5491333	POCHOS	37-37118662		
BOFIM	75-36314070	CUABA DO RIO VERDE	65-5491333	POCHOS DE CALDAS	35-37124636	PERNAMBUCO	
	75-36314070	CUABA DO RIO VERDE	65-5491333	POCHOS DE CALDAS	35-37124636	BELO JARDIM	81-37261198
	75-4413710	PRIMAVEIRA DO LESTE	66-4981842	PONTE NOVA	31-38172486	CABO SOTO AGOSTINHO	81-35211823
BOMFIM	77-324241183	RONDONOPOLIS	62-4323888	POUNZO ALEGRE	35-34212120	CAMARAGIBE	81-34581246
	88-5310133	SINOP	66-5314592	S SEBASTIAO PARAISO	35-35313904	CARUARU	81-37220235
	88-5310133	TANGARA DA SERRA	66-5314592	S SEBASTIAO PARAISO	35-35312054	FLORESTA	81-37722035
BOQUEIRÃO	88-5310133	VARZEA GRANDE	68-6265052	SANTOS DUMONT	35-32516369	GUARANHINS	87-37611090
	88-5310133	VARZEA GRANDE	68-6265052	SÃO JOAO DEL REI	37-33718386	GARANHINS	87-37610605
	88-5310133	VARZEA GRANDE	68-6265052	SANTO ANTONIO MONTE	37-32811235	PAULISTA	81-3631142
BOQUEIRÃO	88-5310133	VARZEA GRANDE	68-6265052	TEOFILO OTONI	33-3525831	RECIFE	81-32131399
	88-5310133	VARZEA GRANDE	68-6265052	TEOFILO OTONI	33-3525831	RECIFE	81-32131399
	88-5310133	VARZEA GRANDE	68-6265052	TEOFILO OTONI	33-3525831	RECIFE	81-32131399
BOQUEIRÃO	88-5310133	VARZEA GRANDE	68-6265052	TEOFILO OTONI	33-3525831	RECIFE	81-32131399
	88-5310133	VARZEA GRANDE	68-6265052	TEOFILO OTONI	33-3525831	RECIFE	81-32131399
	88-5310133	VARZEA GRANDE	68-6265052	TEOFILO OTONI	33-3525831	RECIFE	81-32131399
BOQUEIRÃO	88-5310133	VARZEA GRANDE	68-6265052	TEOFILO OTONI	33-3525831	RECIFE	81-32131399
	88-5310133	VARZEA GRANDE	68-6265052	TEOFILO OTONI	33-3525831	RECIFE	81-32131399
	88-5310133	VARZEA GRANDE	68-6265052	TEOFILO OTONI	33-3525831	RECIFE	81-32131399
BOQUEIRÃO	88-5310133	VARZEA GRANDE	68-6265052	TEOFILO OTONI	33-3525831	RECIFE	81-32131399
	88-5310133	VARZEA GRANDE	68-6265052	TEOFILO OTONI	33-3525831	RECIFE	81-32131399
	88-5310133	VARZEA GRANDE	68-6265052	TEOFILO OTONI	33-3525831	RECIFE	81-32131399
BOQUEIRÃO	88-5310133	VARZEA GRANDE	68-6265052	TEOFILO OTONI	33-3525831	RECIFE	81-32131399
	88-5310133	VARZEA GRANDE	68-6265052	TEOFILO OTONI	33-3525831	RECIFE	81-32131399
	88-5310133	VARZEA GRANDE	68-6265052	TEOFILO OTONI	33-3525831	RECIFE	81-32131399
BOQUEIRÃO	88-5310133	VARZEA GRANDE	68-6265052	TEOFILO OTONI	33-3525831	RECIFE	81-32131399
	88-5310133	VARZEA GRANDE	68-6265052	TEOFILO OTONI	33-3525831	RECIFE	81-32131399
	88-5310133	VARZEA GRANDE	68-6265052	TEOFILO OTONI	33-3525831	RECIFE	81-32131399
BOQUEIRÃO	88-5310133	VARZEA GRANDE	68-6265052	TEOFILO OTONI	33-3525831	RECIFE	81-32131399
	88-5310133	VARZEA GRANDE	68-6265052	TEOFILO OTONI	33-3525831	RECIFE	81-32131399
	88-5310133	VARZEA GRANDE	68-6265052	TEOFILO OTONI	33-3525831	RECIFE	81-32131399
BOQUEIRÃO	88-5310133	VARZEA GRANDE	68-6265052	TEOFILO OTONI	33-3525831	RECIFE	81-32131399
	88-5310133	VARZEA GRANDE	68-6265052	TEOFILO OTONI	33-3525831	RECIFE	81-32131399
	88-5310133	VARZEA GRANDE	68-6265052	TEOFILO OTONI	33-3525831	RECIFE	81-32131399
BOQUEIRÃO	88-5310133	VARZEA GRANDE	68-6265052	TEOFILO OTONI	33-3525831	RECIFE	81-32131399
	88-5310133	VARZEA GRANDE	68-6265052	TEOFILO OTONI	33-3525831	RECIFE	81-32131399
	88-5310133	VARZEA GRANDE	68-6265052	TEOFILO OTONI	33-3525831	RECIFE	81-32131399
BOQUEIRÃO	88-5310133	VARZEA GRANDE	68-6265052	TEOFILO OTONI	33-3525831	RECIFE	81-32131399
	88-5310133	VARZEA GRANDE	68-6265052	TEOFILO OTONI	33-3525831	RECIFE	81-32131399
	88-5310133	VARZEA GRANDE	68-6265052	TEOFILO OTONI	33-3525831	RECIFE	81-32131399
BOQUEIRÃO	88-5310133	VARZEA GRANDE	68-6265052	TEOFILO OTONI	33-3525831	RECIFE	81-32131399
	88-5310133	VARZEA GRANDE	68-6265052	TEOFILO OTONI	33-3525831	RECIFE	81-32131399
	88-5310133	VARZEA GRANDE	68-6265052	TEOFILO OTONI	33-3525831	RECIFE	81-32131399
BOQUEIRÃO	88-5310133	VARZEA GRANDE	68-6265052	TEOFILO OTONI	33-3525831	RECIFE	81-32131399
	88-5310133	VARZEA GRANDE	68-6265052	TEOFILO OTONI	33-3525831	RECIFE	81-32131399
	88-5310133	VARZEA GRANDE	68-6265052	TEOFILO OTONI	33-3525831	RECIFE	81-32131399
BOQUEIRÃO	88-5310133	VARZEA GRANDE	68-6265052	TEOFILO OTONI	33-3525831	RECIFE	81-32131399
	88-5310133	VARZEA GRANDE	68-6265052	TEOFILO OTONI	33-3525831	RECIFE	81-32131399
	88-5310133	VARZEA GRANDE	68-6265052	TEOFILO OTONI	33-3525831	RECIFE	81-32131399
BOQUEIRÃO	88-5310133	VARZEA GRANDE	68-6265052	TEOFILO OTONI	33-3525831	RECIFE	81-32131399
	88-5310133	VARZEA GRANDE	68-6265052	TEOFILO OTONI	33-3525831	RECIFE	81-32131399
	88-5310133	VARZEA GRANDE	68-6265052	TEOFILO OTONI	33-3525831	RECIFE	81-32131399
BOQUEIRÃO	88-5310133	VARZEA GRANDE	68-6265052	TEOFILO OTONI	33-3525831	RECIFE	81-32131399
	88-5310133	VARZEA GRANDE	68-6265052	TEOFILO OTONI	33-3525831	RECIFE	81-32131399
	88-5310133	VARZEA GRANDE	68-6265052	TEOFILO OTONI	33-3525831	RECIFE	81-32131399
BOQUEIRÃO	88-5310133	VARZEA GRANDE	68-6265052	TEOFILO OTONI	33-3525831	RECIFE	81-32131399
	88-5310133	VARZEA GRANDE	68-6265052	TEOFILO OTONI	33-3525831	RECIFE	81-32131399
	88-5310133	VARZEA GRANDE	68-6265052	TEOFILO OTONI	33-3525831	RECIFE	81-32131399
BOQUEIRÃO	88-5310133	VARZEA GRANDE	68-6265052	TEOFILO OTONI	33-3525831	RECIFE	81-32131399
	88-5310133	VARZEA GRANDE	68-6265052	TEOFILO OTONI	33-3525831	RECIFE	81-32131399
	88-5310133	VARZEA GRANDE	68-6265052	TEOFILO OTONI	33-3525831	RECIFE	81-32131399
BOQUEIRÃO	88-5310133	VARZEA GRANDE	68-6265052	TEOFILO OTONI	33-3525831	RECIFE	81-32131399
	88-5310133	VARZEA GRANDE	68-6265052	TEOFILO OTONI	33-3525831	RECIFE	81-32131399
	88-5310133	VARZEA GRANDE	68-6265052	TEOFILO OTONI	33-3525831	RECIFE	81-32131399
BOQUEIRÃO	88-5310133	VARZEA GRANDE	68-6265052	TEOFILO OTONI	33-3525831	RECIFE	81-32131399
	88-5310133	VARZEA GRANDE	68-6265052	TEOFILO OTONI	33-3525831	RECIFE	81-32131399
	88-5310133	VARZEA GRANDE	68-6265052	TEOFILO OTONI	33-3525831	RECIFE	81-32131399
BOQUEIRÃO	88-5310133	VARZEA GRANDE	68-6265052	TEOFILO OTONI	33-3525831	RECIFE	81-32131399
	88-5310133	VARZEA GRANDE	68-6265052	TEOFILO OTONI	33-3525831	RECIFE	81-32131399
	88-5310133	VARZEA GRANDE	68-6265052	TEOFILO OTONI	33-3525831	RECIFE	81-32131399
BOQUEIRÃO	88-5310133	VARZEA GRANDE	68-6265052	TEOFILO OTONI	33-3525831	RECIFE	81-32131399
	88-5310133	VARZEA GRANDE	68-6265052	TEOFILO OTONI	33-3525831	RECIFE	81-32131399
	88-5310133	VARZEA GRANDE	68-6265052	TEOFILO OTONI	33-3525831	RECIFE	81-32131399
BOQUEIRÃO	88-5310133	VARZEA GRANDE	68-6265052	TEOFILO OTONI	33-3525831	RECIFE	81-32131399
	88-5310133	VARZEA GRANDE	68-6265052	TEOFILO OTONI	33-3525831	RECIFE	81-32131399
	88-5310133	VARZEA GRANDE	68-6265052	TEOFILO OTONI	33-3525831	RECIFE	81-32131399
BOQUEIRÃO	88-5310133	VARZEA GRANDE	68-6265052	TEOFILO OTONI	33-3525831	RECIFE	81-32131399
	88-5310133	VARZEA GRANDE	68-6265052	TEOFILO OTONI</			

LISTA DE SERVIÇO AUTORIZADO - BRASIL

CABO FRIO	22-26451819	SAO BORJA	55-34311850	BOTUCATU	14-38821081	SAO PAULO	11-32222311
CAMPOS GOYTACAZES	22-27221499	SAO FCO DE PAULA	54-2441466	BOTUCATU	14-38155044	SAO ROQUE	11-47842509
CANTAGALO	22-25555303	SAO GABRIEL	55-3258833	CAMPINAS	19-32369199	SAO VICENTE	13-34628031
DUQUE DE CAXIAS	21-27711508	SAO JOSE DO OURO	54-3521216	CAMPINAS	19-32544618	SOROCABA	15-32241170
ITACARA	22-38612740	SAO LUIZ GONZAGA	55-33521365	CAMPINAS	19-32336498	SOROCABA	15-32241170
ITAPERUNA	22-38220065	SAO MARCOS	54-2911462	CAMPINAS	19-37372500	STA BARBARA D OESTE	19-34631211
MACAE	22-27626235	SOBRADINHO	55-37421609	CAMPO LIMPO PAULISTA	11-40393200	TABOAO DA SERRA	11-47871480
MACAE	22-27591358	STA CRUZ DO SUL	55-37155456	CAMPOS DO JORDAO	12-36462142	TAQUARITINGA	16-32524039
MAGE	21-26330065	STA CRUZ DO SUL	55-37153048	CATANDUVA	17-35232524	TAUBATE	12-36219080
NITEROI	21-26220157	TAPEJARA	54-3442353	CERQUILHO	15-32842121	TUPIA	14-39625931
NOVA FRIBURGO	22-25227692	TAPERIA	54-3851160	CRUZEIRO	12-31438589	VINHEDO	19-38765301
NOVA IGUAÇU	21-26675663	TAQUARI	51-6531291	DIADEMA	11-40430669	VOTUPORANGA	17-34215726
PETROPOLIS	24-23212737	TOMES	51-6641940	DIADENA	18-38212479		
RESENDE	24-33550101	TRES DE MAIO	55-35352101	FERNANDOPOLIS	17-34423921		
RIO DE JANEIRO	21-25894622	TRES DE MAIO	55-35358877	FRANCA	16-37223898	SERGEPE	
RIO DE JANEIRO	21-25892030	URUGUAIANA	55-34121791	FRANCO DA ROCHA	11-44492608	ARACAJU	79-32119764
RIO DE JANEIRO	21-25097136	VACARIA	54-2311396	GUARUJA	13-33582942	ARACAJU	79-32176080
RIO DE JANEIRO	21-24315426	VENANCIO AIRES	51-37411443	GUARULHOS	11-64513576	ESTANCIA	79-52223235
RIO DE JANEIRO	21-31579290	VERA CRUZ	51-37181350	GUARULHOS	11-64431153	ITABAIANA	79-4313023
RIO DE JANEIRO	21-33916553			IGARAPAVA	16-31724600	LAGARTO	79-63126566
RIO DE JANEIRO	21-23267814			INDAATUBA	19-38753831		
RIO DE JANEIRO	21-31592187	RONDÔNIA		ITAPETININGA	15-32710936	TOCANTINS	
RIO DE JANEIRO	21-38675252	ARIQUEMES	69-35353491	ITAPETININGA	19-38633802	ARAGUAINA	63-4212857
RIO DE JANEIRO	21-25714999	CACAO	69-4431415	ITAPIRA	15-35322743	ARAGUAINA	63-4111818
RIO DE JANEIRO	21-24451123	CEREJEIRAS	69-33422251	ITARARE	11-40230188	GUARAI	63-3641591
SAO GONCALO	21-27013214	GUAJARA-MIRIM	69-35414430	ITU	16-2793365	GURUPI	63-3511038
TERESOPOLIS	21-27496467	J- PARANA	69-34218991	ITUVERAVA	16-32021580	GURUPI	63-33124470
TRES RIOS	24-25554887	PORTO VELHO	69-32273777	JABOTICABAL	16-32021580		
TRES RIOS	24-25251388	ROULIM DE MOURA	69-4421178	JALES	14-36222117		
		VILHENA	69-33223321	JAU	11-45862182		
				JUNDIAI	19-35713528		
RIO GRANDE DO NORTE		RORAIMA		LEME	19-34413179		
CAICO	84-4171844	BOA VISTA	95-32249605	LIMEIRA	14-34547437		
MOSSORO	84-33147809		95-6233456	MARILIA	16-33821046		
NATAL	84-32132245	SANTA CATARINA		MATAO	11-45145233		
PAU DOS FERROS	84-3512334	BLUMENAU	47-3227742	MAUA	11-47941814		
		CANOINHAS	47-6223615	MOGI DAS CRUZES	19-3811171		
RIO GRANDE DO SUL		CANOINHAS	47-6223615	MOGI-GUAÇU	19-38624401		
AGUDO	55-2651036	CAPINZAL	49-35552266	OLIMPIA	17-2812184		
ALEGRETE	55-34221969	CHAPECO	49-33223304	OSASCO	11-34687743		
BAGE	55-32411295	CHAPECO	49-33221144	OURINHOS	14-33225457		
BENTO GONCALVES	54-4524825	CONCORDIA	49-34423704	PIRACICABA	19-34340454		
CAMAQUA	51-36711686	CRICULMA	48-34375155	PIRASSUNINGA	19-35614091		
CAMPINAS DO SUL	54-3661300	CUNHA PORA	49-4660043	PORTO FERREIRA	19-35812441		
CANELA	54-32821551	CURITIBANOS	49-32410851	PRES PRUDENTE	18-2225168		
CAPOA DA CANOA	51-6652638	DESCANSO	49-36230245	PRES. EPITACIO	18-2814184		
CARAZINHO	54-3302292	FLORIANOPOLIS	48-32254149	PRES. PRUDENTE	18-2217943		
CAXIAS DO SUL	55-32611507	INDAIAL	47-33332275	PROMISSAO	14-35411656		
CAXIAS DO SUL	54-2268020	IPORA DO OESTE	49-36341189	RIBEIRAO PRETO	16-36106989		
CERRO LARGO	55-33591973	ITAIOPOLIS	476-532282	RIBEIRAO PRETO	16-36368156		
CORONEL BICACO	55-35571397	ITAJAI	47-33444777	RIBEIRAO PRETO	16-36107553		
ERECHIM	54-3211933	JARAGUA DO SUL	47-33722050	RIO CLARO	19-35348543		
ESTANCIA VELHA	51-35612142	JOACABA	49-35220418	S BERNARDO CAMPO	11-41257000		
FARROPELHA	54-32683603	JOINVILLE	47-34331146	S BERNARDO CAMPO	11-43681728		
FAXINAL DO SOTURNO	55-3261150	LAGES	47-2232355	S CAETANO DO SUL	11-42214334		
FLORES DA CINHA	54-2922625	LAGES	49-32244414	S JOAO BOA VISTA	19-36232990		
FREDERICO WESTPHALEN	55-37341850	LAGUNA	48-34641221	S JOSE CAMPOS	12-39239508		
GETULIO VARGAS	54-3411888	LAURO MULLER	48-4643202	S JOSE DO RIO PARDO	19-36085760		
GIRUA	55-33611764	MARAVILHA	49-6460052	S JOSE RIO PRETO	17-32325680		
GRAVATAI	51-4882830	PNHALZINHO	497-661014	S JOSE RIO PRETO	17-2325281		
HORIZONTINA	55-35371680	PORTO UNIAO	47-3522889	SALTO	11-40296563		
IBIRARAAS	54-3531359	RIO DO SUL	47-5211920	SANTO ANDRE	11-49953288		
IJUI	55-33327746	SAO MIGUEL D OESTE	49-36220026	SANTOS	13-32272947		
IMBE	51-36227704	SEARA	49-4521034	SANTOS	13-32847339		
LAJEADO	51-37145155	SOMBRIO	48-5331225	SAO CARLOS	16-33614913		
MARAU	54-3324571	TAIO	478-420576	SAO JOSE DO CAMPOS	12-39122728		
MONTENEGRO	51-6324187	TUBARAO	48-6224448	SAO JOSE RIO PRETO	17-23255241		
NOCAI	54-3621126	TUBARAO	48-6261651	SAO PAULO	11-2964622		
NOVA PRATA	54-32421328	TURVO	48-5503973	SAO PAULO	11-47630116		
NOVO HAMBURGO	55-35823191	ULRUSANGA	484-451137	SAO PAULO	11-49791184		
OSORIO	51-36632524	VIDERA	49-35660376	SAO PAULO	11-38659897		
PALMEIRA MISSOES	55-37421407	XANXERE	49-4333026	SAO PAULO	11-62156667		
PANAMBI	55-33753488			SAO PAULO	11-69545517		
PASSO FUNDO	54-33111104	SÃO PAULO		SAO PAULO	11-36726766		
PELOTAS	55-32232633	AGUAS DE LINDOIA	19-38241254	SAO PAULO	11-46940101		
PORTO ALEGRE	51-32226494	AMERICANA	19-34062914	SAO PAULO	11-32077111		
PORTO ALEGRE	51-33256653	AMPARO	19-38072674	SAO PAULO	11-39757996		
PORTO ALEGRE	51-32268834	ARACATUBA	18-36218775	SAO PAULO	11-62976464		
RIO GRANDE	53-32322321	ARARAQUARA	16-33368710	SAO PAULO	11-56679695		
SANTA DO LIVRAMENTO	55-32411899	ATIBAIA	11-44118145	SAO PAULO	11-38751333		
SANTA MARIA	55-32222325	BAVARE	14-37322142	SAO PAULO	11-55325135		
SANTA ROSA	55-35121991	BARRETOS	17-33222742	SAO PAULO	11-42809411		
SANTA VITORIA DA PALMAR	53-32633992	BATATAIS	16-37614455	SAO PAULO	11-32321737		
SANTO ANGELO	55-33131183	BAURU	14-32239551	SAO PAULO	11-37717409		
SANTO AUGUSTO	55-37811511	BIRIGUI	18-3642401	SAO PAULO	11-25770899		

CERTIFICADO DE GARANTIA NO BRASIL

Este aparelho é garantido pela Philips da Amazônia Indústria Eletrônica Ltda., por um período superior ao estabelecido por lei. Porém, para que a garantia tenha validade, é imprescindível que, além deste certificado, seja apresentada a nota fiscal de compra do produto.

A Philips da Amazônia Indústria Eletrônica Ltda. assegura ao proprietário consumidor deste aparelho as seguintes garantias, a partir da data de entrega do produto, conforme expresso na nota fiscal de compra, que passa a fazer parte deste certificado:

**Garantia para rádios e reprodutores de CD portáteis
(sem caixa acústica destacável): 180 dias**

Garantia para os demais produtos da marca Philips: 365 dias.

Esta garantia perderá sua validade se:

- O defeito apresentado for ocasionado por uso indevido ou em desacordo com o seu manual de instruções.
- O produto for alterado, violado ou consertado por pessoa não autorizada pela Philips.
- O produto for ligado a fonte de energia (rede elétrica, pilhas, bateria, etc.) de características diferentes das recomendadas no manual de instruções e/ou no produto.
- O número de série que identifica o produto estiver de alguma forma adulterado ou rasurado.

Estão excluídos desta garantia defeitos decorrentes do descumprimento do manual de instruções do produto, de casos fortuitos ou de força maior; bem como aqueles causados por agentes da natureza e acidentes. Excluem-se igualmente desta garantia defeitos decorrentes do uso dos produtos em serviços não doméstico/residencial regular ou em desacordo com o uso recomendado. **ESTÃO EXCLUÍDAS DA GARANTIA ADICIONAL AS PILHAS OU BATERIAS FORNECIDAS JUNTO COM O CONTROLE REMOTO.**

Nos municípios onde não exista oficina autorizada de serviço Philips, as despesas de transporte do aparelho e/ou do técnico autorizado, correm por conta do Sr. Consumidor requerente do serviço.

A garantia não será válida se o produto necessitar de modificações ou adaptações para habilitá-lo a operar em qualquer outro país que não aquele para o qual foi designado, fabricado, aprovado e/ou autorizado, ou ter sofrido qualquer dano decorrente deste tipo de modificação.

Philips da Amazônia Indústria Eletrônica Ltda.

Dentro do Brasil, para informações adicionais sobre o produto ou para eventual necessidade de utilização da rede de oficinas autorizadas, ligue para o Centro de Informações ao Consumidor (CIC). Em São Paulo - Capital e demais localidades com DDD 011 - tel. 2121-0203, nas demais localidades e estados - tel. 0800 701 02 03 (discagem direta gratuita), ou escreva para Caixa Postal: nº 21.315 - CEP04602-970 - São Paulo - SP, ou envie um e-mail para: cic@philips.com.br
Horário de atendimento: de segunda à sexta-feira, das 08:00 às 20:00 h; aos sábados das 08:00 às 13:00h.

Para atendimento fora do Brasil, contate a Philips local ou a:
Philips Consumer Service
Beukenlaan 2
5651 CD Eindhoven
The Netherlands