



MCM285

Quick start guide



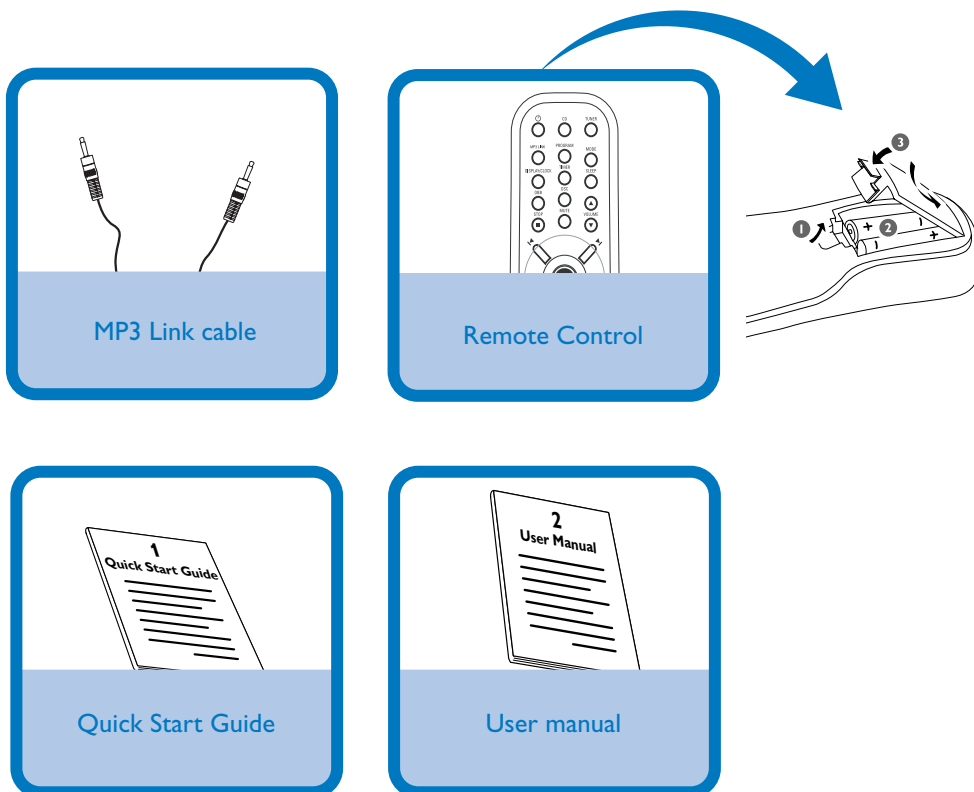
Step A *Connect*

Step B *Setup*

Step C *Enjoy*

What's in the Box?

You should find these items upon opening the box.



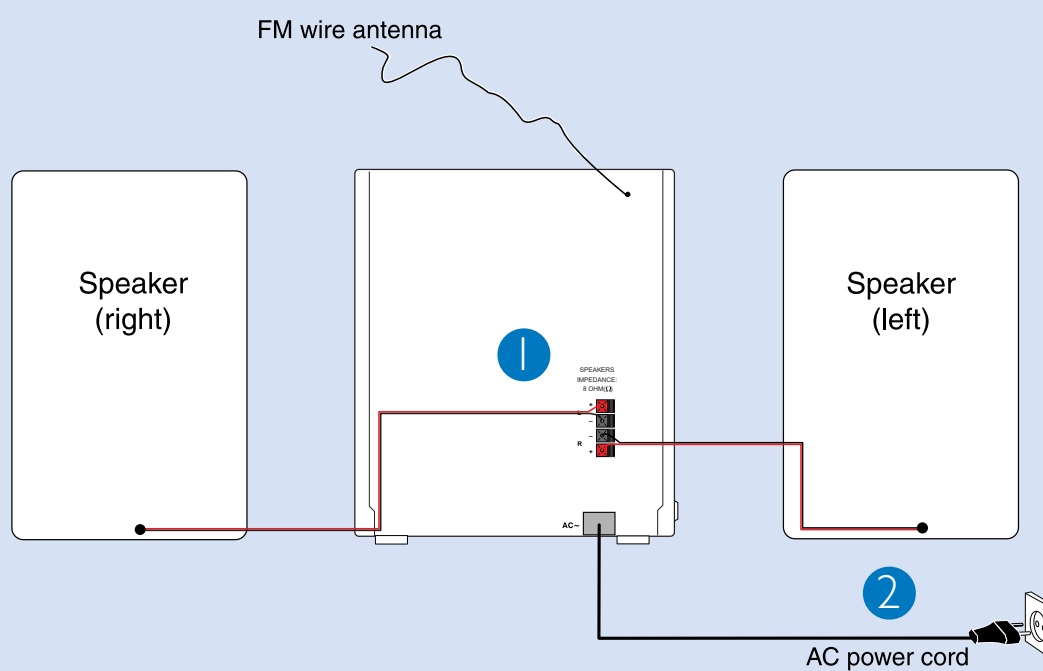
PHILIPS



Step A *Connect*

- 1 Connect the speaker cables.
- 2 Connect the power cable of the system.

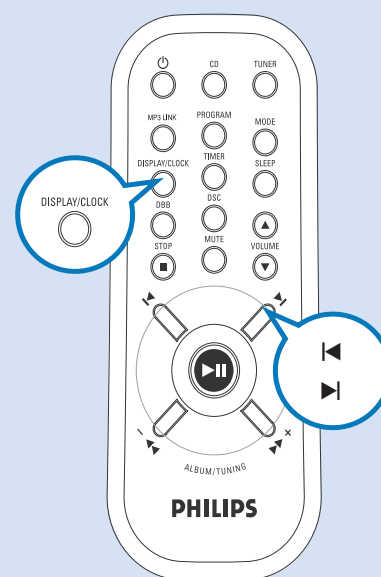
Tip
See the User Manual for how to connect other equipment to this system.



Step B *Setup*

Setting the clock

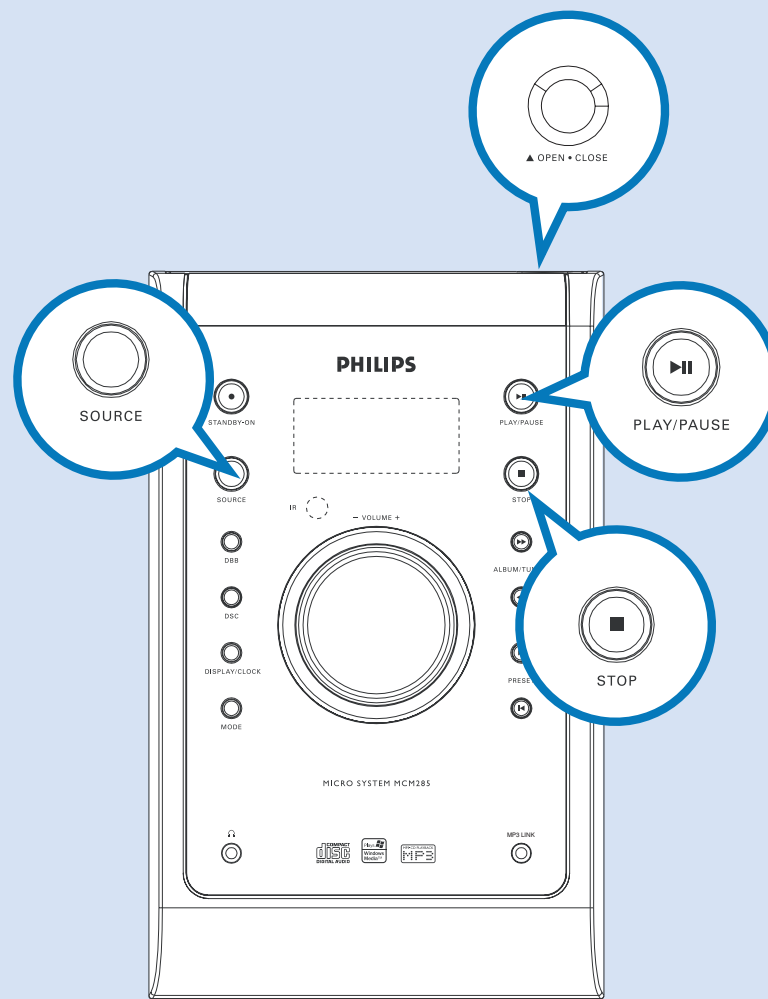
- 1 In standby mode, press and hold **DISPLAY/CLOCK**. The clock digits for the hours flash.
- 2 Press **PRESET +/-** (|</>|) (|</>| on the remote) to set the hours.
- 3 Press **DISPLAY/CLOCK** again. The clock digits for the minutes flash.
- 4 Press **PRESET +/-** (|</>|) (|</>| on the remote) to set the minutes.
- 5 Press **DISPLAY/CLOCK** to confirm the time.



Step C Enjoy


Playing a disc

- 1 Press **SOURCE** once or more to select **CD**.
- 2 Press **OPEN/CLOSE** on the system to open the CD compartment.
- 3 Insert a disc with the printed side facing up and press **OPEN/CLOSE** to close the CD door.
- 4 Press **▶||** to start playback.
- 5 Press **■** to stop playback.



Step C Enjoy

Programming and tuning to radio stations

- 1 Press **SOURCE** or **TUNER** once or more to select the desired waveband :
FM or MW (AM).
- 2 Press **PROGRAM** on the remote control for more than two seconds to
program all available stations.
- 3 Press **PRESET +/-**  until the desired preset station is displayed.

Tip

*Detailed playback features and additional functions are described in the
accompany owner's manual.*



© Royal Philips Electronics N.V. 2008
All rights reserved.

<http://www.philips.com>



PDCC-ZC-0816