

Register your product and get support at  
[www.philips.com/welcome](http://www.philips.com/welcome)

HMP3000



---

EN User manual

---

**PHILIPS**

# Contents

<b>1</b>	<b>Trademark notice</b>	<b>5</b>
<b>2</b>	<b>Connect and play</b>	<b>7</b>
<b>3</b>	<b>Control and play</b>	<b>11</b>
<b>4</b>	<b>Options</b>	<b>13</b>
	Video options	13
	Audio option	14
	Photo options	14
<b>5</b>	<b>File browsing</b>	<b>15</b>
	Browse all files	16
	Browse movie files	17
	Browse music files	18
	Browse photo files	19
<b>6</b>	<b>File management</b>	<b>21</b>
	Basic operations	21
<b>7</b>	<b>Settings</b>	<b>23</b>
	System	23
	Audio	24
	Video	24
	EasyLink	25
	MISC	25

8	EasyLink	26
9	Troubleshooting	27
10	Specification	28

# 1 Trademark notice



HDMI, the HDMI logo, and High-Definition Multimedia Interface are trademarks or registered trademarks of HDMI licensing LLC in the United States and other countries.



Manufactured under license from Dolby Laboratories. Dolby and the double-D symbol are trademarks of Dolby Laboratories.



ABOUT DIVX VIDEO: DivX® is a digital video format created by DivX, Inc. This is an official DivX Certified® device that plays DivX video. Visit [divx.com](http://divx.com) for more information and software tools to convert your files into DivX video.

ABOUT DIVX VIDEO-ON-DEMAND: This DivX Certified® device must be registered in order to play purchased DivX Video-on-Demand (VOD) movies. To obtain your registration code, locate the DivX VOD section in your device setup menu. Go to [vod.divx.com](http://vod.divx.com) for more information on how to complete your registration.

DivX®, DivX Certified®, DivX Plus™ HD and associated logos are registered trademarks of DivX, Inc. and are used under license.

DivX Certified® to play DivX® and DivX Plus™ HD (H.264/MKV) video up to 1080p HD including premium content.



Real RMVB logo is a trademark or a registered trademark of RealNetworks, Inc.



Windows Media and the Windows logo are trademarks, or registered trademarks of Microsoft Corporation in the United States and/or other countries.

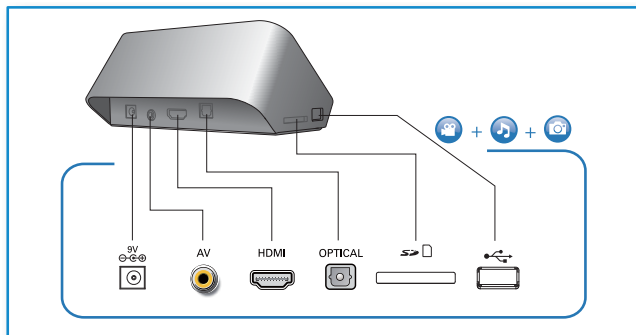


Manufactured under license under U.S. Patent Nos: 5,956,674; 5,974,380; 6,487,535 & other U.S. and worldwide patents issued & pending. DTS, the Symbol, & DTS and the Symbol together are registered trademarks & DTS 2.0+Digital Out is a trademark of DTS, Inc. Product includes software. © DTS, Inc. All Rights Reserved.

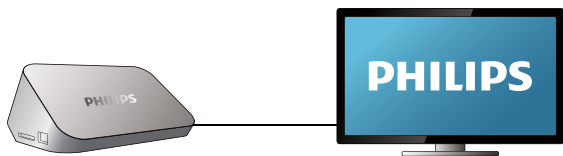
## 2 Connect and play



# 1



## 2



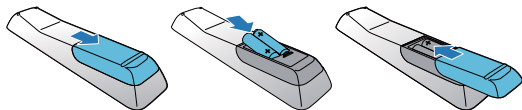
HDMI



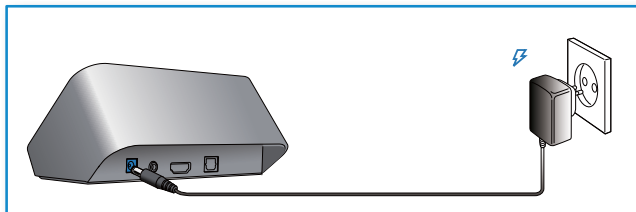
TV OUT + AUDIO OUT



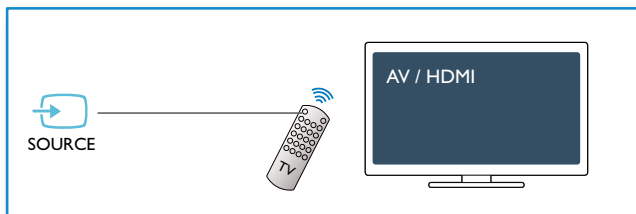
## 3



4



5

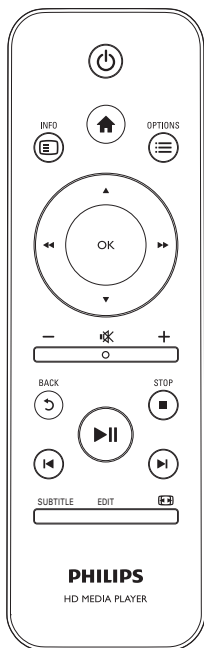






# 3 Control and play

Use your remote control to control the play.



Function	Buttons / Actions
Stop the play.	■
Pause or resume the play.	▶▶
Skip to the previous/next media file.	◀◀ ▶▶
Return to the home page.	🏠
Zoom in or out.	Press  repeatedly. • To pan through an enlarged photo, press ▲ / ▼ / ◀◀ / ▶▶.
Search backward/forward fast.	Press ◀◀ / ▶▶ repeatedly to select a speed.
Access subtitle settings.	SUBTITLE
Rotate a photo.	Press ▲ / ▼.
Navigate menus.	▲ / ▼ / ◀◀ / ▶▶
Confirm a selection or entry.	OK
Access option menus during play or in the file list.	≡
Access the file editing menu in the file folder list.	EDIT

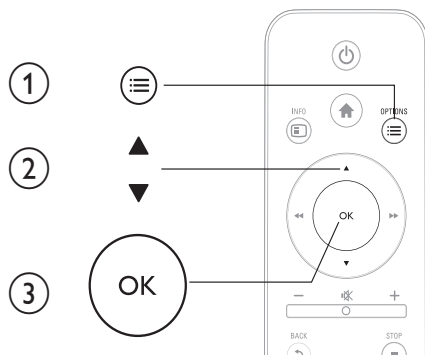


## Note

- You can only play DivX videos that were rented or purchased with DivX® registration code of this player. (Refer to “**Setup**” > “**MISC**” > **[DivX® VOD Code]**)
- Subtitle files with the following filename extensions (.srt, .smi, .sub, .ssa, .ass, .txt) are supported but not displayed in the file list.
- The subtitle filename has to be the same as the filename of the DivX video (the file extension excluded).
- The DivX video file and the subtitle file must be saved under the same directory.

## 4 Options

During play, press **≡** to access the option items.



### Video options

**[Subtitle]:** Adjust subtitle settings. Press **◀◀ / ▶▶** to select an item and **▲ / ▼** to adjust values. Then press **OK** to confirm.

**[Audio]:** Select an audio language.

**[GOTO]:** Skip play to the specific time. Press **◀◀ / ▶▶** to select an item and **▲ / ▼** to adjust values. Then press **OK** to confirm.

**[Repeat Title]:** Repeat the current title.

**[Repeat All]:** Repeat the all movie file.

**[Repeat Off]:** Turn off a repeat mode.

[**Video Setting**]: Adjust the video settings. Press ▲ / ▼ to select an item and ◀◀ / ▶▶ to adjust values. Then press **OK** to confirm.

---

## Audio option

[**Repeat Off**]: Turn off a repeat mode.

[**Repeat One**]: Repeat the current music file.

[**Repeat All**]: Repeat all the music files.

[**Shuffle Loop**]: Play music files in a random loop.

---

## Photo options

[**Slide Timing**]: Set a display interval for a slideshow.

[**Slide Transition**]: Select a transition effect for a slideshow.

[**Repeat Off**]: Turn off a repeat mode.

[**Repeat All**]: Repeat all the photo files.

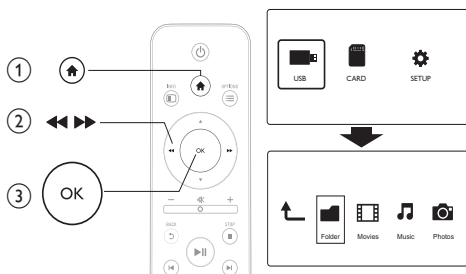
[**Shuffle Loop**]: Play photo files in a random loop.


[**Select Music**]: Select and play a music file during slideshow.

[**Video Setting**]: Adjust the video settings.

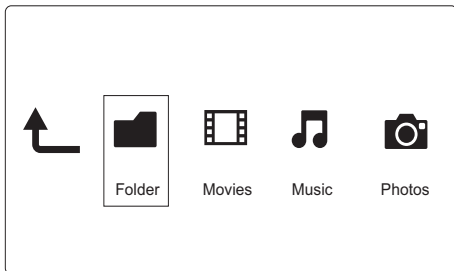
## 5 File browsing

You can browse media files stored in a USB/SD storage device.



- 1 Press .
- 2 Select **[USB]/ [CARD]**.
- 3 Select a mode to browse media files.
  - **[Folder]**
  - **[Movies]**
  - **[Music]**
  - **[Photos]**

## Browse all files



- 1 Select **[Folder]** and press **OK** to confirm.
- 2 Press **OK** to go to the USB/SD storage device.
- 3 Press **:≡** in the file browser.
- 4 Press **▲ / ▼** to select a mode to view or arrange files.

**[Thumbnails]**: Display thumbnails of files or folder.

**[List]**: Display files or folder in a list.

**[Preview]**: Display files or folders with a preview window.

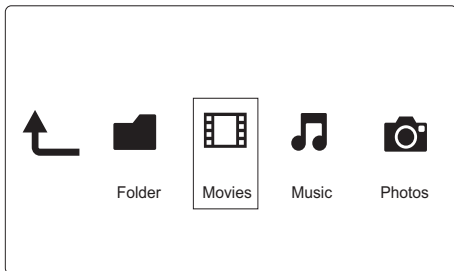
**[All Media]** Display all media files.

**[Movies]**: Display movie files.

**[Photos]**: Display photo files.

**[Music]**: Display music files.

## Browse movie files



- 1 Press ◀◀ / ▶▶ to select **[Movies]** and press **OK** to confirm.
- 2 Press **OK** to go to the USB/SD storage device.
- 3 Press ≡ in the file browser.
- 4 Press ▲ / ▼ to select a mode to view or arrange files.

**[Search]**: Search movie files. Follow on screen instruction to type in key words in the mini keyboard and press ▶|| to start search.

**[Thumbnails]**: Display thumbnails of movie files or folder.

**[List]**: Display files or folder in a list.

**[Preview]**: Display files or folders with a preview window.

**[All Movies]**: Display all movies files.

**[Show DVDs]**: Display all ISO files.

**[Go to Folder]**: Go to the folder where the selected file is placed.

**[Name]**: List movies files in an alphabetical order of their names.

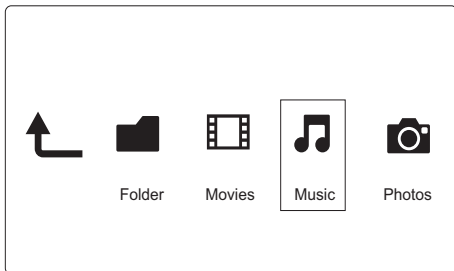
**[Size]**: List movies files in the ascending order of their sizes.

**[Most Viewed]**: List most viewed movie files.

**[Recently Added]**: List movie files added recently.



## Browse music files



- 1 Press ◀◀ / ▶▶ to select **[Music]** and press **OK** to confirm.
- 2 Press **OK** to go to the USB/SD storage device.
- 3 Press ≡ in the file browser.
- 4 Press ▲ / ▼ to select a mode to view or arrange files.

**[Search]**: Search music files. Follow on screen instruction to type in key words in the mini keyboard and press ▶|| to start search.

**[Thumbnails]**: Display thumbnails of music files or folder.

**[List]**: Display files or folder in a list.

**[Preview]**: Display files or folders with a preview window.

**[Go to Folder]**: Go to the folder where the selected file is placed.

**[All Songs]**: Display all music files.

**[Albums]**: Sort music files by albums.

**[Artists]**: Sort music files by artists.

**[Genres]**: Sort music files by genres.

**[Years]**: Sort music files by years.

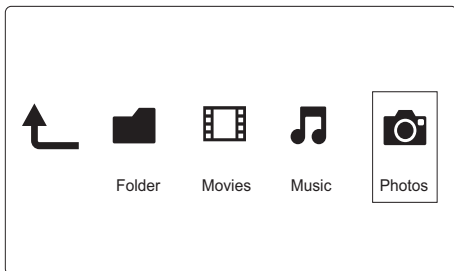
**[Playlists]**: Display play lists.

**[Recently Played]**: List music files played recently.

**[Recently Added]:** List music files added recently

**[Name]:** List music files in an alphabetical order of their names.

## Browse photo files



- 1 Press ◀◀ / ▶▶ to select **[Photos]** and press **OK** to confirm.
- 2 Press **OK** to go to the USB/SD storage device.
- 3 Press ≡ in the file browser.
- 4 Press ▲ / ▼ to select a mode to view or arrange files.

**[Search]:** Search photo files. Follow on screen instruction to type in key words in the mini keyboard and press ▶|| to start search.

**[Thumbnails]:** Display thumbnails of photo files or folder.

**[List]:** Display files or folder in a list.

**[Preview]:** Display files or folders with a preview window.

**[Photo Directory]:** Display photo files in the directory mode.

**[Leaf Folder View]:** Display photo files in the leaf folder mode.

**[Date view]:** Sort photo files by date modified.

**[All Photos]:** Display all photos files.

**[Albums]:** Sort photo files by album.

**[Go to Folder]:** Go to the folder where the selected file is placed.

**[Name]:** List photo files in an alphabetical order of their names.

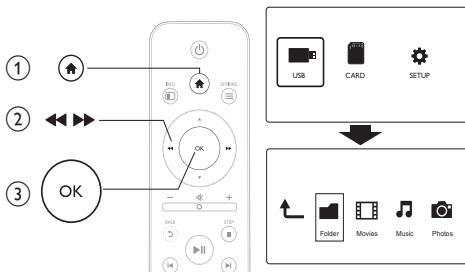
**[Recently Added]:** List photo files added recently.

**[Recently Played]:** List photo files played recently.

# 6 File management

You can manage media files on the storage device.

## Basic operations



- 1 Press **Home**.
- 2 Select **[USB]/ [CARD] >[Folder]**.
- 3 Press **OK** to go to the partition of the USB/SD storage device.
- 4 Press **▲ / ▼** to select a file or folder and press **[Edit]**.  
↳ The file editing menu is displayed.
- 5 Press **▲ / ▼** to select your operation.

**[Copy]:** Select the destination and press **►||** to confirm.

**[Delete]:** Select **[Yes]** and press **OK** to delete the selected files or folders.

**[Move]:** Select the destination and press **►||** to confirm.

### [Rename]

- 1 Select **[Rename]** to edit the name in the mini keyboard, and then press **►||** to confirm.
- 2 Select **[OK]** and press **OK** to apply the new name.

---

## Use the file list

### [Multiple Select]

- 1 Press **▲ / ▼** to select a file or folder and press **►||** to add to the list.
- 2 Press **[Edit]** when you complete adding files and folders.
- 3 Select an operation.

<b>[Copy]</b>	Select the destination and press <b>►  </b> to confirm.
<b>[Delete]</b>	Select <b>[Yes]</b> and press <b>OK</b> to delete the selected files or folders.
<b>[Move]</b>	Select the destination and press <b>►  </b> to confirm.
<b>[Save Playlist]</b>	Select <b>[OK]</b> to save a play list. Select <b>[Rename]</b> to edit the name in the mini keyboard, and then press <b>►  </b> to confirm.
<b>[Save Photo Album]</b>	Select <b>[OK]</b> to save a photo album. Select <b>[Rename]</b> to edit the name in the mini keyboard, and then press <b>►  </b> to confirm.

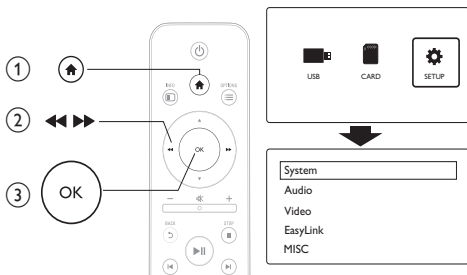


### Note

- Press and hold **■** for two seconds to remove a connected storage device safely.

# 7 Settings

You can change settings of this player in the setup menu.



- 1 Press **Home**.
- 2 Select **[Setup]** and press **OK** to confirm.
  - ➔ The setup menu is displayed.
  - ➔ Press **▲ / ▼** to select a menu item or setting option.
  - ➔ Press **OK** to access the lower-level menu.
  - ➔ Press **↶** to return to the upper-level menu.

## System

**[Menu Language]:** Select a language for on-screen menu.

**[Subtitle]:** Select a text encoding option for displaying subtitles correctly.

**[Screen Saver]:** Enable the screen saver in case of inactivity (for example, in pause or stop mode).

**[Auto Scan]:** Scan media files on a storage device automatically.

**[Scan Storage]:** Start or stop scanning media files on a storage device.

**[Resume Play]:** Resume playback of a video file from the point where you last stopped.

**[Factory Default]:** Reset all settings to factory default.

---

## Audio

**[Night Mode]:** Equalize loud sound and soft sound. If enabled, you can watch movies at a low volume at night.

**[HDMI Output]:** Select an output sound format when connecting the HDMI jack.

**[SPDIF Output]:** Select an output sound format when connecting the digital audio jack.

---

## Video

**[Aspect Ratio]:** Select display aspect ratio.

**[TV System]:** Select video output format to TV system.

**[Video Zoom]:** Zoom in or out video scenes.

**[1080P 24Hz]:** Use 1080p 24Hz video output mode for video content.

**Note**

- The video resolution and the frame rate of the video content is 1080p 24Hz.
- Your TV supports the 1080p 24Hz.
- Ensure that you use a HDMI cable to connect this player to your TV.


**[Deep Color]:** Display colors with more shades and hues when the video content is recorded in Deep Color mode and the TV supports this feature.

---

## EasyLink

**[Easy Link]:** Enable or disable the EasyLink feature.

**[One Touch Play]:** After you enable this feature, the connected HDMI CECTV automatically switches to the HDMI input channel when you play a media file.

**[One Touch Standby]:** After you enable this feature, you can press and hold  on the remote control of your player to switch all connected HDMI CEC devices to standby mode simultaneously.

---

## MISC


**[Version Info]:** Display the information about software version of this player.

**[DivX® VOD Code]:** Display the DivX® registration code and deregistration code.



# 8 EasyLink

This player supports Philips EasyLink which uses the HDMI CEC (Consumer Electronics Control) protocol. You can use a single remote control to control EasyLink compliant devices that are connected through HDMI.

- 1 Connect the HDMI CEC compliant devices through HDMI, and turn on the HDMI CEC operations on the TV and other connected devices (see the user manual of the TV or other devices for details).
- 2 Press .
- 3 Select **[Setup] > [Easy Link]**.
- 4 Select **[On]** under the options:
  - **[Easy Link] > [On]**
  - **[One Touch Play] > [On]**
  - **[One Touch Standby] > [On]**
  - EasyLink function is turned on.

---

## One Touch Play

When you play a file with this player, the connected HDMI CEC TV automatically switches to the HDMI input channel.

---

## One Touch Standby

When you switch a connected device (for example TV) to the standby mode with its own remote control, this player switches to the standby mode automatically.

---



### Note

- Philips does not guarantee 100% interoperability with all HDMI CEC devices.

# 9 Troubleshooting

If you contact Philips, you will be asked for the model and serial number of this player. The model number and serial number are at the bottom of this player. Write the numbers here:

Model No. \_\_\_\_\_

Serial No. \_\_\_\_\_

## **No picture.**

- Refer to the TV user manual for how to select the correct video input channel

## **No sound output from the TV.**

- Make sure that the audio cables are connected to the audio input sockets that are grouped with the selected video input sockets.

## **The contents of the USB storage device cannot be read.**

- The format of this USB storage device is not supported.
- The supported memory size is 1TB maximum.
- Make sure that this player supports these files. (Refer to "Specifications" > "Playable media")
- DRM-protected video files that are stored on a USB/SD storage device cannot be played through an analog video connection (for example, composite). You need to use an HDMI connection to play these files.

## **DivX subtitles are not displayed correctly.**

- Make sure that the subtitle filename is the same as the video filename.
- Make sure that the DivX video file and the subtitle file are saved under the same directory.

# 10 Specification



## Note

- Specification and design are subject to change without notice.

### File

- Video: MPEG 1/2/4(MPEG 4 Part 2), H.264, VC-1, H.263, VP6(640 × 480),, DivX Plus HD, DivX 3/4/5/6, Xvid, RMVB 8/9/10, RM, WMV (V9), AVI, TS, M2TS, TP, TRP, ISO, VOB, DAT, MP4, MPEG, MPG, MOV (MPEG 4, H264), ASF, FLV(640 × 480), MKV, M4V.
- Audio: Dolby digital, AAC, RA, OGG, MKA, MP3, WAV, APE, FLAC, DTS, LPCM, PCM, WMA (V9), IMP/MS ADPCM, WMA Pro
- Picture: JPEG, JPG, M-JPEG, PNG, TIF, TIFF, GIF (unanimated GIF), BMP, HD JPEG

### USB storage device

- Compatibility: Hi-Speed USB (2.0)

### Subtitle support

- .srt, .sub, .smi, .ssa, .ass, .txt, .psb

### SD card

- Compatibility: SDHC 2.0 (up to 32 GB)

### Video

- Signal system: PAL /NTSC
- Composite video output: 1 Vpp ~ 75 ohm
- HDMI output: 480i, 480p, 576i, 576p, 720p, 1080i, 1080p

## Audio

- Analog stereo output
- Signal to noise ratio (1 kHz): > 90 dB (A-weighted)
- Dynamic Range (1 kHz): > 80 dB (A-weighted)
- Frequency response: +/-0.2 dB
- Digital output: Optical

## Main Unit

- Dimensions (L x W x H): 136 x 86 x 52 mm
- Net Weight: 0.41 Kg

## Power

- Input: DC 9V 1.1A
- Power consumption: < 10 W
- Power consumption in standby mode: < 1 W

## Power Adapter

- Power supply rating: AC 100V-240V 50Hz / 60Hz
- Output: DC 9V 1.1A
- Brand: Philips
- Model No: SSW-1918EU-1

## Accessories

- Main unit
- Remote control
- AV cable
- Power adapter
- Disc
- User manual



© 2011 Koninklijke Philips Electronics N.V.

All rights reserved.

HMP3000\_98\_UM\_V3.0

