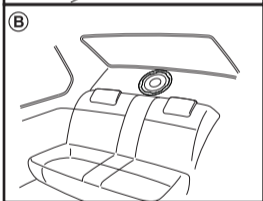
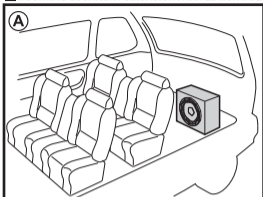
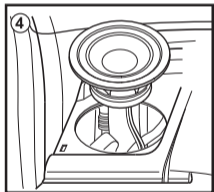
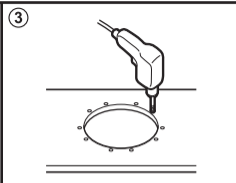
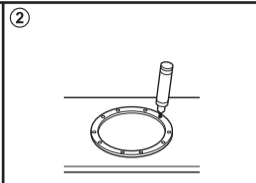
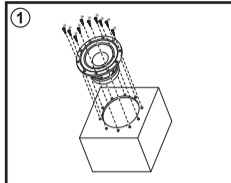


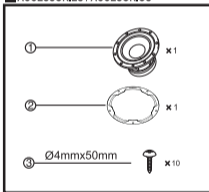
■ MOUNTING LOCATION / UBICACIÓN PARA EL MONTAJE



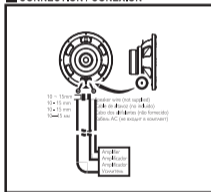
■ INSTALLATION / INSTALACIÓN



■ ACCESSORIES / ACCESORIOS



■ CONNECTION / CONEXIÓN



Speaker type.....25cm subwoofer  
 RMS power (Watts)..... 120W  
 Peak music power (Watts).....650W  
 Sensitivity (dB/W/m)..... 89dB  
 Frequency response (Hz)..... 25-1500Hz  
 Impedance (Ohms)..... 4 Ohms  
 Magnet mass (Oz).....55.4 Oz

Tipo de alto-falante.....Subwoofer de 25 cm  
 Potência em RMS (Watts)..... 120W  
 Potência de pico musical (Watts).....650W  
 Sensibilidade (dB/W/m).....89dB  
 Resposta de frequência (Hz).....25-1500Hz  
 Impedância (ohms).....4 Ohms  
 Massa magnética (kg).....1,57kg