

Always there to help you

Register your product and get support at
www.philips.com/support



BTB2465



User manual

PHILIPS

Contents

1 Important	2	8 Product information	18
Safety	2	Specifications	18
		USB playability information	19
2 Your micro system	3	Supported MP3 disc formats	19
Introduction	3	RDS program types	19
What's in the box	3		
Overview of the main unit	4	9 Troubleshooting	20
Overview of the remote control	5		
		10 Notice	22
3 Get started	7	Declaration of conformity	22
Connect FM antenna	7	Important notes for users in the U.K.	22
Connect power	7		
Prepare the remote control	7		
Set clock	8		
Turn on	8		
4 Play	9		
Play from disc	9		
Play from USB	9		
Control play	9		
Skip to a track	10		
Program tracks	10		
Play from Bluetooth-enabled devices	10		
5 Listen to the radio	12		
Listen to DAB radio	12		
Listen to FM radio	13		
6 Adjust sound	15		
Select a preset sound effect	15		
Adjust volume level	15		
Mute sound	15		
7 Other features	16		
Set the alarm timer	16		
Set the sleep timer	16		
Listen from an external device	16		
Listen through a headphone	17		

1 Important

Safety

- Make sure that there is enough free space around the product for ventilation.
- Only use attachments or accessories specified by the manufacturer.
- Battery usage **CAUTION** – To prevent battery leakage which may result in bodily injury, property damage, or damage to the product:
 - Install the battery correctly, + and - as marked on the product.
 - Remove the battery when the product is not used for a long time.
 - The battery shall not be exposed to excessive heat such as sunshine, fire or the like.
- Use only power supplies listed in the user manual.
- The product shall not be exposed to dripping or splashing.
- Do not place any sources of danger on the product (e.g. liquid filled objects, lighted candles).
- Where the mains plug or an appliance coupler is used as the disconnect device, the disconnect device shall remain readily operable.



Warning

- Never remove the casing of this device.
- Never lubricate any part of this device.
- Never place this device on other electrical equipment.
- Keep this device away from direct sunlight, naked flames or heat.
- Never look into the laser beam inside this device.
- Ensure that you always have easy access to the power cord, plug, or adaptor to disconnect this device from the power.

Hearing safety



Listen at a moderate volume.

- Using headphones at a high volume can impair your hearing. This product can produce sounds in decibel ranges that may cause hearing loss for a normal person, even for exposure less than a minute. The higher decibel ranges are offered for those that may have already experienced some hearing loss.
- Sound can be deceiving. Over time your hearing 'comfort level' adapts to higher volumes of sound. So after prolonged listening, what sounds 'normal' can actually be loud and harmful to your hearing. To guard against this, set your volume to a safe level before your hearing adapts and leave it there.

To establish a safe volume level:

- Set your volume control at a low setting.
- Slowly increase the sound until you can hear it comfortably and clearly, without distortion.

Listen for reasonable periods of time:

- Prolonged exposure to sound, even at normally 'safe' levels, can also cause hearing loss.
- Be sure to use your equipment reasonably and take appropriate breaks.

Be sure to observe the following guidelines when using your headphones.

- Listen at reasonable volumes for reasonable periods of time.
- Be careful not to adjust the volume as your hearing adapts.
- Do not turn up the volume so high that you can't hear what's around you.
- You should use caution or temporarily discontinue use in potentially hazardous situations.

2 Your micro system

Congratulations on your purchase, and welcome to Philips! To fully benefit from the support that Philips offers, register your product at www.philips.com/welcome.

Introduction

With this unit, you can:

- enjoy audio from discs, Bluetooth-enabled devices, USB storage devices, or other external devices;
- listen to Digital Audio Broadcasting (DAB) or FM radio stations.

You can select one of the following sound effects:

- Balanced, Warm, Bright, Clear, and Powerful

The unit supports these media formats:

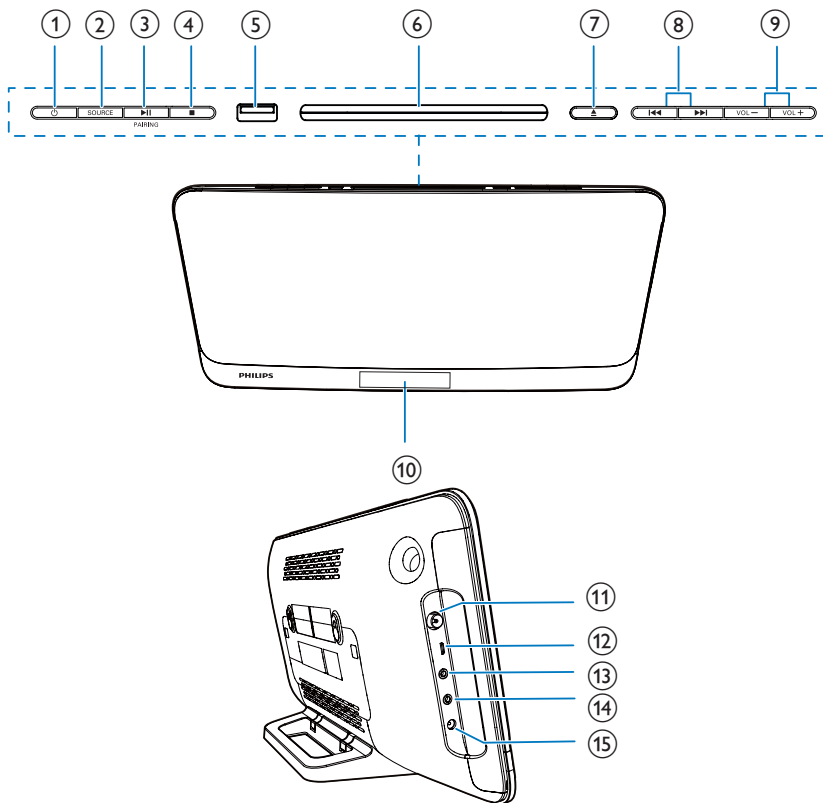


What's in the box

Check and identify the contents of your package:

- Main unit
- 1 x FM wire antenna
- Remote control (with one AAA battery)
- Short User Manual
- Wall mounting sheet
- Wall mounting kit
- Stand
- Warranty card

Overview of the main unit



①

- Turn the unit on or off.
- Switch to standby mode or Eco standby mode.

② **SOURCE**

- Press to select a source: DISC, USB, DAB, TUNER, BT, AUDIO IN.

③ **▶||/PAIRING**

- Start, pause, or resume play.
- In Bluetooth mode, press and hold for 3 seconds to enter pairing mode.

④

- Stop play or erase a program.

⑤

- USB socket.

⑥ **Disc compartment**

⑦

- Open/close the disc compartment.

⑧ **◀◀/▶▶**

- Skip to the previous/next track.
- Search within a track/disc/USB.
- Tune to a radio station.
- Adjust time.

⑨ **VOL+/VOL-**

- Adjust volume.

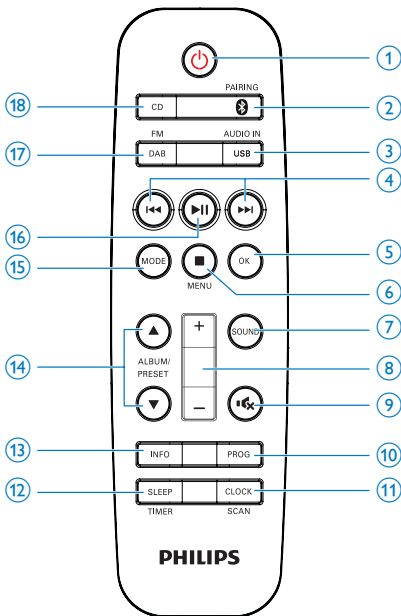
⑩ **Display panel**

⑪ **FM ANT**

- FM antenna socket.

- ⑫ **MICRO USB**
 - For DAB upgrade only.
- ⑬ **Headphone socket.**
- ⑭ **AUDIO IN**
 - Audio input socket(3.5mm) for an external audio device.
- ⑮ **DC IN 12V 2.5A**
 - Power socket.

Overview of the remote control



- ① **Power**
 - Turn the unit on or off.
 - Switch to standby mode or Eco power standby mode.
- ② **PAIRING**
 - Press to select the BT (Bluetooth) source.

- ③ **USB/AUDIO IN**
 - In Bluetooth mode with one device connected, press and hold for 3 seconds to enter pairing mode.
 - In Bluetooth mode with two devices connected, press and hold for 3 seconds to disconnect the first device or the device without music playback and enter pairing mode.
- ④ **Navigation**
 - Press repeatedly to select the USB or AUDIO IN source.
- ⑤ **Navigation**
 - Skip to the previous/next track.
 - Search within a track/disc/USB.
 - Tune to a radio station.
 - Adjust time.
- ⑥ **OK**
 - Confirm the selection.
 - Switch between FM stereo and mono broadcast.
- ⑦ **Navigation**
 - Stop play or erase a program.
 - Access the DAB or FM menu.
- ⑧ **SOUND**
 - Select a preset sound effect.
- ⑨ **+/-**
 - Adjust volume.
- ⑩ **Mute**
 - Mute or restore volume.
- ⑪ **PROG**
 - Program tracks.
 - Program radio stations.
- ⑫ **CLOCK/SCAN**
 - Set the clock.
 - View clock information.
 - Scan FM or DAB radio stations.
- ⑬ **SLEEP/TIMER**
 - Set sleep timer.
 - Set alarm timer.

⑬ INFO

- Display the current status or disc information.
- For selected FM radio stations, display RDS information (if available).

⑭ ALBUM/PRESET ▲ / ▼

- Select a preset radio station.
- Skip to the previous/next album.

⑮ MODE

- Select repeat or shuffle play mode.
- Adjust LCD brightness

⑯ ►||

- Start, pause, or resume play.

⑰ DAB/FM

- Press repeatedly to select the DAB or FM source.

⑱ CD

- Select the DISC source.

3 Get started



Caution

- Use of controls or adjustments or performance of procedures other than herein may result in hazardous laser exposure or other unsafe operation.

Always follow the instructions in this chapter in sequence.

If you contact Philips, you will be asked for the model and serial number of this apparatus. The model number and serial number are on the back of the apparatus. Write the numbers here:

Model No. _____

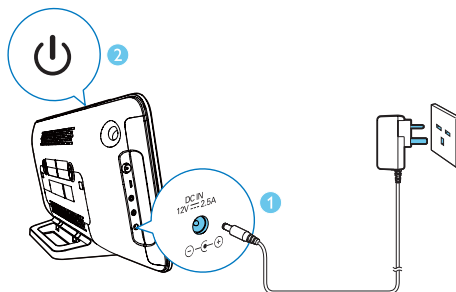
Serial No. _____

Install table stand



Connect FM antenna

- Connect the supplied antenna to this device before listening to the radio.



Prepare the remote control

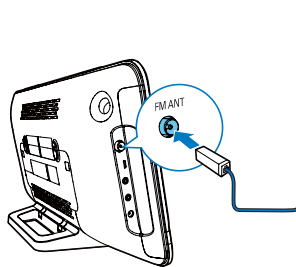


Caution

- Risk of product damage! When the remote control is not used for long periods, remove the battery.

To insert the remote control battery:

- 1 Open the battery compartment.



Connect power



Caution

- Risk of product damage! Make sure that the power supply voltage matches the voltage printed on the back of the main unit.
- Risk of electric shock! Before you plug the AC power adaptor, make sure that the adaptor plug converter is fixed securely. When you unplug the AC power adaptor, always pull the plug, never the cord.
- Before you connect the AC power adaptor, make sure that you have completed all the other connections.

- 2 Insert the supplied AAA battery with correct polarity (+/-) as indicated.
- 3 Close the battery compartment.



Note

- If no button is pressed in 10 seconds, the system exits clock setting mode automatically.

Tip

- You can press **CLOCK** to view clock information in power-on mode.

Set clock

- 1 In standby mode, press and hold **CLOCK** on the remote control for 3 seconds.
↳ The **[24H]** or **[12H]** hour format is displayed.
- 2 Press **◀◀** / **▶▶** to select the **[24H]** or **[12H]** hour format.
- 3 Press **CLOCK** to confirm.
↳ The hour digits are displayed and begin to blink.
- 4 Press **◀◀** / **▶▶** to select hour and press **CLOCK** to confirm.
↳ The minute digits are displayed and begin to blink.
- 5 Press **◀◀** / **▶▶** to select minute and press **CLOCK** to confirm.
↳ **[SYNC ON]** is displayed on the LCD screen.
- 6 Press **◀◀** / **▶▶** to select **[SYNC ON]** or **[SYNC OFF]**.
 - If **[SYNC ON]** is selected, **[DAB]** or **[RDS]** is displayed. Press **◀◀** / **▶▶** to select one option, then press **CLOCK** to confirm.
 - If **[SYNC OFF]** is selected, the system will not synchronize clock with RDS radio station or DAB stations that transmit signals.

Turn on

- Press **⏻**.
↳ The unit switches to the last selected source.

Switch to standby mode

- Press **⏻** again to switch the unit to standby mode.
↳ The clock (if set) is displayed on the panel.

Switch to ECO standby mode:

- Press and hold **⏻** for more than 3 seconds.
↳ The display panel is dimmed.

Note

- The unit switches to Eco Power Standby mode after 15 minutes in standby mode.

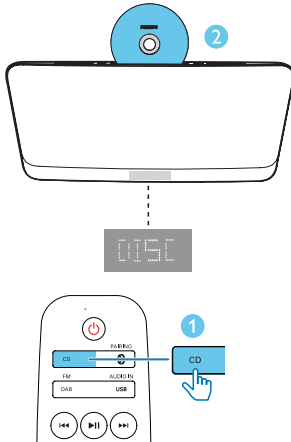
4 Play

Play from disc

Note

- Make sure that the disc contains playable audio content.

- 1 Press **CD** to select the **DISC** source.
- 2 Insert a disc into the disc compartment with the printed side facing you.
→ Play starts automatically. If not, press **▶II**.



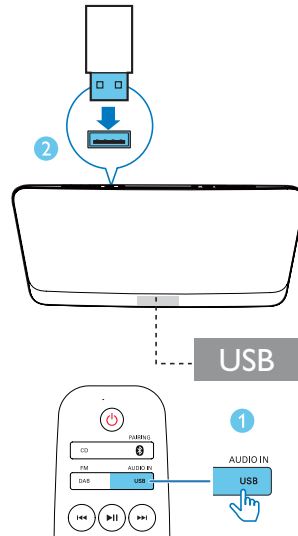
Play from USB

Note

- Make sure that the USB device contains playable audio content (see 'Product information' on page 18).

- 1 Press **USB/AUDIO IN** repeatedly to select the **USB** source.
- 2 Insert a USB device into the **USB** socket.

→ Play starts automatically. If not, press **▶II**.



Control play

ALBUM/ PRESET	Select a folder.
▲ / ▼	
◀◀ / ▶▶	Select an audio file.
▶ II	Pause or resume play.
■ / MENU	Stop play.
MODE	Select an available play mode. <ul style="list-style-type: none">• [REP ONE] (repeat one): repeat the current track• [REP ALB] (repeat album): repeat tracks in the current album• [REP ALL] (repeat all): repeat all tracks• [SHUF ON] (shuffle on): play tracks randomly• (off): play tracks in sequence
+/-	Increase or decrease volume.
⏏	Mute or restore sound.

Skip to a track

For CD:

Press ◀◀ / ▶▶ to select another track.

For MP3 disc and USB:

- 1 Press **ALBUM/PRESET ▲ / ▼** to select an album or a folder.
- 2 Press ◀◀ / ▶▶ to select a track or a file.

Program tracks

You can program a maximum of 20 tracks.

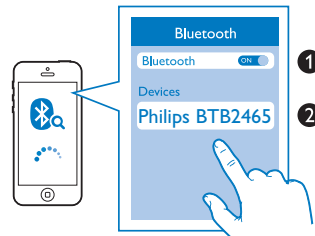
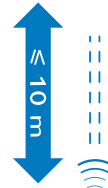
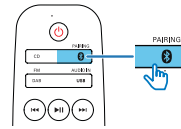
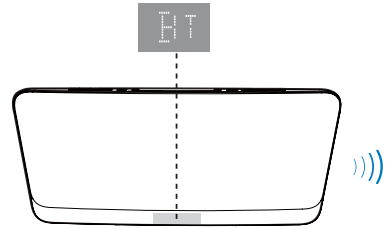
- 1 Stop play, and then press **PROG** to activate programming mode.
- 2 For MP3 tracks, press **ALBUM/PRESET ▲ / ▼** to select an album.
- 3 Press ◀◀ / ▶▶ to select a track, and then press **PROG** to confirm.
- 4 Repeat steps 2-3 to program more tracks.
- 5 Press ▶▶ to play the programmed tracks.
 - To erase the program, stop play, and then press ■ / **MENU**.

Play from Bluetooth-enabled devices

Note

- Before pairing a device with this unit, read its user manual for Bluetooth compatibility.
- Compatibility with all Bluetooth devices is not guaranteed.
- Any obstacle between the unit and the device can reduce the operational range.
- The effective operation range between this unit and your Bluetooth enabled device is approximately 10 meters (30 feet).
- The unit can memorize up to 8 previously connected Bluetooth devices.

To enjoy music through the speaker wirelessly, you need to pair your Bluetooth enabled device with the unit.



- 1 Press **BT / PAIRING** to select the **Bluetooth** source.
 ↳ **[BT]** (Bluetooth) is displayed.
 ↳ The Bluetooth indicator flashes blue quickly.
- 2 On your device that supports Advanced Audio Distribution Profile (A2DP), enable Bluetooth and search for Bluetooth devices that can be paired (refer to the user manual of the device).

- 3 Select '**Philips BTB2465**' on your Bluetooth enabled device and if necessary input '0000' as the pairing password.
 - ↳ After successful pairing and connection, the Bluetooth indicator turns solid blue, and the unit beeps twice.
 - ↳ '**BT**' is displayed.
- 4 Play music on the connected device.
 - ↳ Music streams from your Bluetooth enabled device to this product.
 - If you fail to search for '**Philips BTB2465**' or cannot pair with this product, press and hold **0** /**PAIRING** for three seconds to enter pairing mode.

To disconnect the current Bluetooth-enabled device:

- Deactivate Bluetooth on your device;

Pair and connect a second device

You can pair and connect a maximum of two Bluetooth-enabled devices to this product actively at the same time.

To connect and play from the second Bluetooth-enabled device

- Press and hold **0** /**PAIRING** for 3 seconds to enter pairing mode.
 - ↳ The Bluetooth indicator flashes blue quickly.
 - ↳ The product beeps once.
- To play from the other connected device, stop music streaming from the current device, and then play music from the other device.

To connect and play from a third Bluetooth-enabled device

- Press and hold **0** /**PAIRING** for 3 seconds to enter pairing mode.
 - ↳ The first connected device or the device with no music playback is disconnected.
 - ↳ The product beeps once.

5 Listen to the radio



Tip

- Position the antenna as far as possible from TV or other radiation sources.
- Make sure that you have connected the supplied FM antenna.
- For optimal reception, fully extend and adjust the position of the antenna.

Listen to DAB radio

Digital Audio Broadcasting (DAB) is a way of broadcasting radio digitally through a network of transmitters. It provides you with more choice, better sound quality, and more information.



Note

- The name DAB appear in this user manual refers to both DAB and DAB+.

Tune to DAB radio stations



Note

- Make sure that the antenna is fully extended.

- 1 Press **DAB/FM** repeatedly to select the **DAB** source.
↳ **[FULL SCAN]** (full scan) is displayed.
- 2 Press **OK** to start full scan.
↳ The unit stores all DAB radio stations automatically and broadcasts the first available station.
↳ The station list is memorized in the unit. Next time when you turn on the unit, the station scan does not take place.



Note

- If no DAB radio station is found, **[NO DAB]** (no DAB) is displayed, then **[FULL SCAN]** (full scan) is displayed again.

To tune to a station from the available station list:

In DAB mode, press **◀◀ / ▶▶** repeatedly to navigate through the available DAB stations.

Store DAB radio stations automatically



Note

- New stations and services will be added in DAB broadcast from time to time. To make new DAB stations and services available, perform full scan regularly.

- 1 In DAB mode, press and hold **CLOCK/SCAN** for more than 3 seconds.
↳ The unit scans and stores all the available DAB radio stations, and broadcasts the first available station.
- 2 Press **◀◀ / ▶▶** to select an automatically stored station.

Store DAB radio stations manually



Note

- You can store a maximum of 20 preset DAB radio stations.

- 1 Tune to a DAB radio station.
- 2 Press **PROG** to activate the storing mode.
- 3 Press **ALBUM/PRESET ▲ / ▼** to select a preset number.
- 4 Press **PROG** to confirm.
↳ The name of the preset station is displayed.

- 5 Repeat the above steps to store more DAB stations.
- 6 Press **ALBUM/PRESET ▲ / ▼** to select a manually stored station, and then press **OK** to confirm.

Note

- To remove a pre-stored DAB radio station, store another station in its place.

Show DAB information

- While listening to DAB radio, press **INFO** repeatedly to scroll through the following information (if available):
 - Station Name
 - Dynamic Label Segment
 - Program Type
 - Ensemble Name
 - Frequency
 - Signal error rate
 - Bit rate
 - Audio status (DAB, DAB)
 - Time
 - Date

Use DAB menu

- 1 In DAB mode, press **■ /MENU** to access DAB menu.
- 2 Press **◀ / ▶** to scroll the menu options:
 - **[FULL SCAN]** (full scan): scan and store all the available DAB radio stations.
 - **[MANUAL]** (manual): tune to a DAB station manually.
 - **[PRUNE]** (prune): remove all the invalid stations from the station list.
 - **[SYSTEM]** (system): adjust system settings.
- 3 To select an option, press **OK**.

- 4 If a sub-option is available, repeat steps 2- 3.

[SYSTEM] (system)

- **[RESET]** (reset): reset all settings to factory default.
- **[UPGRADE]** (upgrade): upgrade software if available.
- **[SW VVER]** (software version): show the software version of this unit.

Listen to FM radio

Tune to a radio station

- 1 Press **DAB/FM** repeatedly to select the tuner source.
- 2 Press and hold **◀ / ▶** for 3 seconds.
↳ The radio tunes to a station with strong reception automatically.
- 3 Repeat step 2 to tune to more stations.

To tune to a weak station:

- Press **◀ / ▶** repeatedly until you find optimal reception.

Store FM radio stations automatically

Note

- You can store a maximum of 20 preset radio stations (FM).

- 1 In tuner mode, press **■ /MENU** to access the FM tuner menu.
↳ **[SCAN]** is displayed.
- 2 Press **OK**, and then press **◀ / ▶** to scroll the menu options:
 - **[STRONG]** (strong stations): scan stations with strong signals only.
 - **[ALL]** (all stations): scan all available FM radio stations.

- 3 Press **OK** to select an option, and then press **■/MENU** to exit the menu.
- 4 In FM tuner mode, press and hold **CLOCK/SCAN**.
 - ↳ The stations scanned are based on the selection in step 2.
 - ↳ The unit broadcasts the first scanned FM radio stations.

Store FM radio stations manually

- 1 Tune to an FM radio station.
- 2 Press **PROG** to activate programming mode.
 - ↳ **[PROG]** (program) blinks.
- 3 Press **ALBUM/PRESET ▲ / ▼** repeatedly to select a radio frequency.
- 4 Press **PROG** again to confirm.
 - ↳ The frequency of the preset station is displayed.
- 5 Repeat the above steps to store more FM stations.

Note

- To remove a pre-stored station, store another station in its place.

- Radio text message
- Program type
- Frequency
- Stereo/Mono
- Time

Select stereo/mono broadcast

Note

- Stereo broadcast is the default setting for tuner mode.
 - For stations with weak signals: to improve the reception, change to monaural sound.
- In FM tuner mode, press **OK** to switch between mono and stereo broadcast.
 - ↳ **[ST]** (Stereo) is displayed when the radio station is stereo broadcast.

Select a preset radio station

- In FM mode, press **ALBUM/PRESET ▲ / ▼** to select a stored radio frequency, and then press **OK** to confirm.

Show RDS information

Radio Data System (RDS) is a service that allows FM stations to show additional information.

- 1 Tune to an RDS station.
- 2 Press **INFO** repeatedly to scroll through the following information (if available).

6 Adjust sound

The following operations are applicable to all supported media.

Select a preset sound effect

- Press **SOUND** repeatedly to select a preset sound effect.
 - **Balanced**(Balanced), **Warm**(Warm), **Bright**(Bright), **Clear**(Clear), and **Powerful**(Powerful).

Adjust volume level

- On the remote control, press **+/-** repeatedly.
- On the main unit, press **VOL+/VOL-** repeatedly.

Mute sound

- Press **MUTE** to mute or restore the sound.

7 Other features

Adjust LCD brightness

- 1 Press and hold **MODE** for over 3 seconds, the current DIM setting is displayed.
↳ By default, it's DIM 2 (the weakest brightness).
- 2 Press **MODE** repeatedly to change LCD brightness:
↳ DIM 2 (the weakest) → DIM 1 → DIM off (the brightest)

Set the alarm timer

This unit can be used as an alarm clock. You can select **DISC**, **USB**, **DAB**, or **TUNER** as the alarm source.

Note

- Make sure that you have set the clock correctly.

- 1 In standby mode, press and hold **SLEEP/TIMER** for three seconds.
- 2 Press **◀▶** repeatedly to select an alarm source (**DISC**, **USB**, **DAB**, or **TUNER**).
- 3 Press **SLEEP/TIMER** to confirm.
↳ The hour digits begin to blink.
- 4 Repeat steps 2-3 to set the hour, minute, and volume of the alarm.

Note

- If no button is pressed in 90 seconds, the system exits timer setting mode automatically.

To activate or deactivate the alarm timer:

- Press **SLEEP/TIMER** repeatedly to view the alarm information and activate or deactivate the alarm.
↳ If the timer is activated, **[TIMER](Timer)** is displayed.
↳ If the timer is deactivated, **[TIMER OFF]** (timer off) is displayed and **[TIMER](Timer)** disappears.



Tip

- If the **DISC/USB** source is selected, but no disc is placed or no USB connected, the system switches to the tuner source automatically.

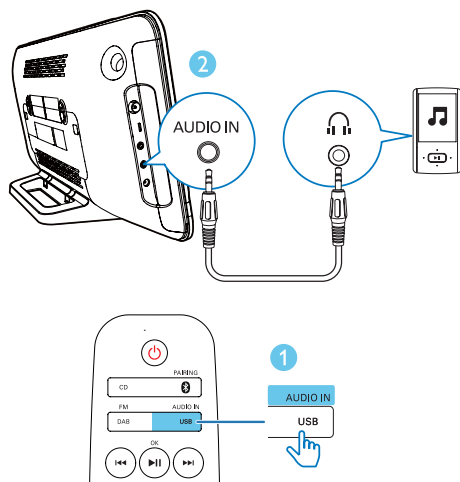
Set the sleep timer

- To set the sleep timer, when the unit is switched on, press **SLEEP/TIMER** repeatedly to select a set period of time (in minutes).
 - **[SLP 120]**
 - **[SLP 90]**
 - **[SLP 60]**
 - **[SLP 45]**
 - **[SLP 30]**
 - **[SLP 15]**
 - **[SLP OFF]**
- ↳ When the sleep timer is activated, **[SLEEP]** (sleep) is displayed. Otherwise, **[SLEEP]** (sleep) disappears.


Listen from an external device

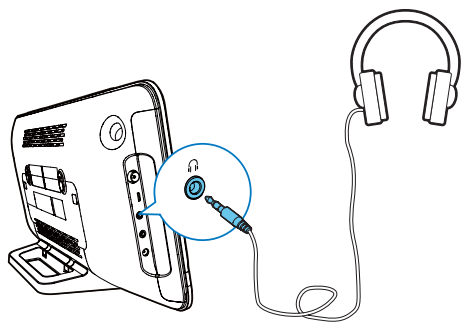
You can listen to an external device through this unit with an audio cable.

- 1 Press **USB/AUDIO IN** repeatedly to select the **AUDIO IN** source.
- 2 Connect an audio cable (not supplied) between:
 - the **AUDIO IN** socket (3.5 mm) on the unit;
 - and the headphone socket on an external device.
- 3 Start to play music on the connected device (see the device user manual).



Listen through a headphone

- Plug a headphone (not supplied) into the  socket.



8 Product information

Note

- Product information is subject to change without prior notice.

Specifications

Amplifier

Total output power	15W <10% THD
Frequency Response	63 -20KHz, ±3dB
Total Harmonic Distortion	<1%(1 KHz)
Signal to Noise Ratio (A-weighted)	>72dBA
AUDIO IN	650mV RMS 22kohm

Disc

Laser Type	Semiconductor
Disc Diameter	12 cm
Support Disc	CD-DA, CD-R, CD-RW, MP3-CD
Audio DAC	24 Bits/44.1 kHz
Total Harmonic Distortion	<1% (1 kHz)
Frequency Response	63Hz - 20kHz, ±3dB
S/N Ratio	>72dBA

Bluetooth

Bluetooth version	V3.0 +EDR
Bluetooth frequency band	2.4GHz ~ 2.48GHz ISM Band
BT distance	10 m

USB

USB Direct Version	2.0 full speed
--------------------	----------------

Tuner (FM)

Tuning Range	87.5-108 MHz
Tuning grid	50 KHz
Sensitivity	
- Mono, 26 dB S/N Ratio	<22 dBf
- Stereo, 46 dB S/N Ratio	<43 dBf
Search Selectivity	<28dBf
Total Harmonic Distortion	<3%
Signal to Noise Ratio	>55dBA

Speakers

Speaker Impedance	6ohm
Speaker Driver	2.75 inch

DAB/DAB+

DAB Range	174.928MHz - 239.200MHz
-----------	-------------------------

General information

AC power	Model: GT-WAHU12000250-002/ AS360-120-AI250 Input: 100-240V~, 50-60 Hz Output: DC 12V, 2500 mA
Operation Power Consumption	15W
Eco Standby Power Consumption	0.5W
Dimensions	
- Main Unit (W × H × D)	465 × 233 × 107 mm
Weight	
- Main Unit	please change to 2.35kg

USB playability information

Compatible USB devices:

- USB flash memory (USB2.0 or USB1.1)
- USB flash players (USB2.0 or USB1.1)
- memory cards (requires an additional card reader to work with this unit)

Supported USB formats:

- USB or memory file format: FAT12, FAT16, FAT32 (sector size: 512 bytes)
- MP3 bit rate (data rate): 32-320 Kbps and variable bit rate
- Directory nesting up to a maximum of 8 levels
- Number of albums/ folders: maximum 99
- Number of tracks/titles: maximum 999
- ID3 tag v2.0 or later
- File name in Unicode UTF8 (maximum length: 32 bytes)

Unsupported USB formats:

- Empty albums: an empty album is an album that does not contain MP3 files, and will not be shown in the display.
- Unsupported file formats are skipped. For example, word documents (.doc) or MP3 files with extension .dlf are ignored and not played.

Supported MP3 disc formats

- ISO9660, Joliet
- Maximum title number: 128 (depending on file name length)
- Maximum album number: 99
- Supported sampling frequencies: 32 kHz, 44.1 kHz, 48 kHz
- Supported Bit-rates: 32~256 (kbps), variable bit rates

RDS program types

NO TYPE	No RDS programme type
NEWS	News services
AFFAIRS	Politics and current affairs
INFO	Special information programs
SPORT	Sports
EDUCATE	Education and advanced training
DRAMA	Radio plays and literature
CULTURE	Culture, religion and society
SCIENCE	Science
VARIED	Entertainment programs
POP M	Pop music
ROCK M	Rock music
MOR M	Light music
LIGHT M	Light classical music
CLASSICS	Classical music
OTHER M	Special music programs
WEATHER	Weather
FINANCE	Finance
CHILDREN	Children's programs
SOCIAL	Social Affairs
RELIGION	Religion
PHONE IN	Phone In
TRAVEL	Travel
LEISURE	Leisure
JAZZ	Jazz Music
COUNTRY	Country Music
NATION M	National Music
OLDIES	Oldies Music
FOLK M	Folk Music
DOCUMENT	Documentary
TES	Alarm Test
ALARM	Alarm

9 Troubleshooting



Warning

- Never remove the casing of this unit.

To keep the warranty valid, never try to repair the unit yourself.

If you encounter problems when using this device, check the following points before requesting service. If the problem remains unsolved, go to the Philips Web page (www.philips.com/support). When you contact Philips, make sure that the device is nearby and the model number and serial number are available.

No power

- Make sure that the AC power cord of the device is connected properly.
- Make sure that there is power at the AC outlet.
- As a power-saving feature, the system switches off automatically 15 minutes after track play reaches the end and no control is operated.

No sound or poor sound

- Adjust the volume.

No response from the unit

- Disconnect and reconnect the AC power plug, then turn on the unit again.

Remote control does not work

- Before you press any function button, first select the correct source with the remote control instead of the main unit.
- Reduce the distance between the remote control and the unit.
- Insert the battery with its polarities (+/– signs) aligned as indicated.
- Replace the battery.
- Aim the remote control directly at the sensor on the front of the unit.

No disc detected

- Insert a disc.
- Make sure that the disc is inserted with the printed side facing front side.
- Wait until the moisture condensation at the lens has cleared.
- Replace or clean the disc.
- Use a correct format disc.

Cannot display some files in USB device

- The number of folders or files in the USB device has exceeded a certain limit. This phenomenon is not a malfunction.
- The formats of these files are not supported.

USB device not supported

- The USB device is incompatible with the unit. Try another one.

Poor radio reception

- Increase the distance between the unit and your TV or other radiation sources.
- Connect and fully extend the supplied antenna.

Music playback is unavailable on this unit even after successful Bluetooth connection.

- The device cannot be used to play music through this unit wirelessly.

The audio quality is poor after connection with a Bluetooth-enabled device.

- The Bluetooth reception is poor. Move the device closer to this unit or remove any obstacle between them.

Bluetooth cannot be connected with this unit.

- The device does not support the profiles required for this unit.
- The Bluetooth function of the device is not enabled. Refer to the user manual of the device to find out how to enable the function.
- This unit is not in pairing mode.
- The unit has connected to two Bluetooth-enabled devices. Disconnect one of those two devices and try again.

The paired mobile device connects and disconnects constantly.

- The Bluetooth reception is poor. Move the device closer to this unit or remove any obstacle between them.
- Some mobile phones may connect and disconnect constantly when you make or end calls. This does not indicate any malfunction of this unit.
- For some devices, the Bluetooth connection may be deactivated automatically as a power-saving feature. This does not indicate any malfunction of this unit.

Timer does not work

- Set the clock correctly.
- Switch on the timer.

Clock/timer setting erased

- Power has been interrupted or the power cord has been disconnected. Reset the clock/timer.

10 Notice

Any changes or modifications made to this device that are not expressly approved by Gibson Innovations may void the user's authority to operate the equipment.

C€0890

Declaration of conformity

Hereby, Gibson Innovations declares that this product is in compliance with the essential requirements and other relevant provisions of Directive 1999/5/EC. You can find the Declaration of Conformity on www.p4c.philips.com.

Disposal of your old product and battery



Your product is designed and manufactured with high quality materials and components, which can be recycled and reused.



This symbol on a product means that the product is covered by European Directive 2012/19/EU.



This symbol means that the product contains batteries covered by European Directive 2013/56/EU which cannot be disposed of with normal household waste.

Inform yourself about the local separate collection system for electrical and electronic products and batteries. Follow local rules and never dispose of the product and batteries with normal household waste. Correct disposal of old products and batteries helps prevent negative consequences for the environment and human health.

Removing the disposable batteries

To remove the disposable batteries, see battery installation section.

Environmental information

All unnecessary packaging has been omitted. We have tried to make the packaging easy to separate into three materials: cardboard (box), polystyrene foam (buffer) and polyethylene (bags, protective foam sheet.)

Your system consists of materials which can be recycled and reused if disassembled by a specialized company. Please observe the local regulations regarding the disposal of packaging materials, exhausted batteries and old equipment.

Bluetooth

The Bluetooth® word mark and logos are registered trademarks owned by Bluetooth SIG, Inc. and any use of such marks by Gibson Innovations Limited is under license. Other trademarks and trade names are those of their respective owners.

This apparatus includes this label:



Note

- The type plate is located on the back of the device.



This product has been manufactured by, and is sold under the responsibility of Gibson Innovations Ltd., and Gibson Innovations Ltd. is the warrantor in relation to this product. Philips and the Philips Shield Emblem are registered trademarks of Koninklijke Philips N.V. and are used under license.

BTB2465_05_UM_V1.0

