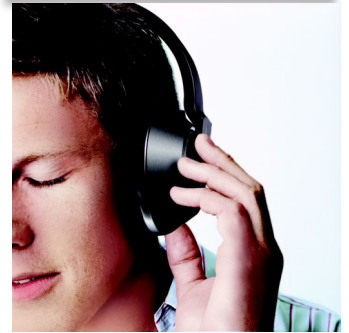




Philips
Wireless HiFi Headphone



SHC8565

The ultimate wireless HiFi experience

with bass and treble enhancements

Freedom to enjoy music around your home. HiFi sound reproduction with auto tuning and sound enhancement features, this stereo headphone is the ultimate in personal convenience.

You'll forget you're wearing them!

- Soft ear and headband cushions ensure comfort in use
- 3-way adjustment for a better fit and bass performance
- Pre-formed ear-cushions ensure a comfortable fit

The perfect wireless listening experience

- Boost the treble to suit your personal preference
- Set the bass response to suit your preference
- 40mm speaker driver delivers sound without distortion

Always ready to go

- FM Wireless transmission for freedom of movement
- Automatic tuning simplifies tuning reception frequency
- Energizing docking station stores and re-charges receiver



PHILIPS

Specifications

Sound

- Acoustic system: Closed
- Frequency response: 10 - 22 000 Hz
- Magnet type: Neodymium
- Sensitivity: 100 dB
- Signal/noise ratio: ~70dB
- Speaker diameter: 40 mm

Tuner/Reception/Transmission

- Channel separation: > 30 dB
- Pilot tone frequency: 19 kHz
- Effective range: 100 m
- Carrier frequency range: 863.0 - 865.0 MHz
- Modulation: FM
- Automatic channel selection
- Number of channels: 3

Convenience

- Automatic power off
- Battery charging indication
- Battery low indication
- Double PLL
- Operating time: +/- 15 hours

Power

- Power supply headphone: 2 x 1.5 V NiMH R03/AAA
- Power supply transmitter: AC/DC adapter 12V/200mA

Outer Carton

- EAN: 87 10895 95796 0
- Number of consumer packagings: 3
- Gross weight: 4.82 kg
- Outer carton (L x W x H): 40 x 25.9 x 34.8 cm
- Nett weight: 3.129 kg
- Tare weight: 1.691 kg

Packaging dimensions

- EAN: 87 10895 95795 3
- Number of products included: 1
- Packaging type: Carton
- Packaging dimensions (W x H x D): 23 x 33 x 12.5 cm
- Gross weight: 1.367 kg
- Nett weight: 1.043 kg
- Tare weight: 0.324 kg

Highlights

Soft ear and headband cushions

The durable and soft materials used for the ear cushions and headband cushion of these Philips headphones ensure comfortable prolonged use.

3-way adjustable ear shells

Enjoy a comfortable fit and experience better bass performance thanks to the three-way adjustable ear shells that fit naturally around your ears.

Ergonomic design earcushions

The ergonomic three-dimensional earcushion shape evenly distributes the load for a better and more comfortable fit.

Treble Boost

An easy to locate control on the headphone allows you to boost the treble performance with just one touch.

Bass boost

An easy to locate control on the headphone allows you to boost the bass performance with just one touch.

40 mm speaker driver

The 40 mm speaker driver is made of a composite mylar material for a highly sensitive yet powerful element that delivers sound without audible distortion.

FM Wireless transmission

With high frequency FM wireless transmission, which can even pass through walls, you can even listen to your music when you're in another room.

Automatic tuning

Pressing the handy tuning button on the headphone sets the microprocessor-controlled circuit going to optimally tune the transmission frequency for the best possible reception and superb audio quality.

Energizing docking station

The docking station is the most convenient way to store your receiver when not in use. At the same time, it will recharge your receiver unit and have it ready for use at any moment.



Issue date 2015-06-25

Version: 4.0.8

12 NC: 9082 100 07829
EAN: 87 10895 95795 3

© 2015 Koninklijke Philips N.V.
All Rights reserved.

Specifications are subject to change without notice.
Trademarks are the property of Koninklijke Philips N.V.
or their respective owners.

www.philips.com