



Philips
Design cordless phone

With answering machine

M8881B



Redefining the home phone

Impeccable craftsmanship meets iconic style with the Philips M8 cordless phone. Advanced manufacturing transforms premium materials into a work of art, heralding a new class of designer home phone that is a pleasure to behold.

Exquisite design with high quality execution

- Sophisticated design with genuine metal highlights
- Sensually curved handset for pure balance and comfort
- Calibrated, seamlessly integrated keys for precise dialing
- Charge handset either way around
- Smart, nicely designed cable management

Ultimate calling experience

- High resolution 5.1cm (2") TFT color display
- Advanced sound testing and tuning for superb voice quality
- Handset speakerphone allows you to talk handsfree
- Up to 60 min. message on your answering machine
- Privacy settings: call barring, silence mode with filtering
- Talk up to 18 hours on a single charge

Eco-conscious product

- Low radiation (ECO and ECO+ modes) and power consumption

PHILIPS

Design cordless phone
With answering machine

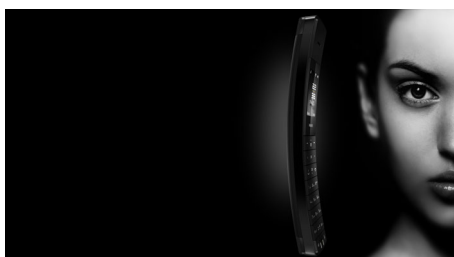
Highlights

Calibrated keypad



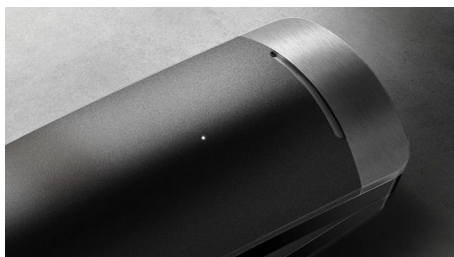
The calibrated keypad allows you to clearly feel every keystroke whenever you are dialing a number or entering a phonebook contact. Detailed study of keypad materials and structures, as well as extensive user tests result in the right balance between the key pressing force and the key response to ensure precise dialing.

Comfortable handset



Sensually curved handset for pure balance and comfort

Handset speakerphone



Handsfree mode uses a built-in loud speaker to amplify the voice of the caller, allowing you to speak and listen during a call without holding the phone to your ear. This is especially useful if you want to share the call with others or simply multitask.

Hassle-free charging



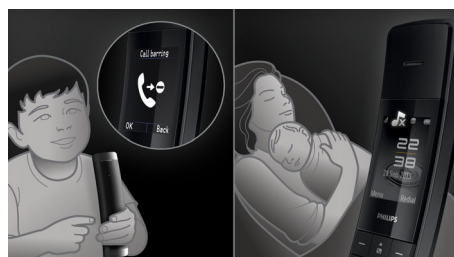
For reliability and convenience the handset can be charged in both directions of the docking station.

Natural materials



The design of the Philips M8 features genuine die-cast metal that has been immaculately crafted and brushed for a truly refined look and feel.

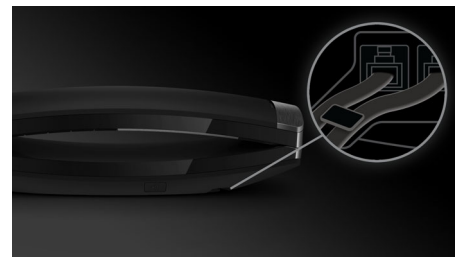
Privacy modes



Value your privacy and quiet at home? Easily disable the ringtones for specific "no call" times to enjoy peace and silence. An additional filtering function allows any number chosen from the phone book to still ring when calling, making sure that only "right" people can reach you. Thanks to call barring you can avoid expensive phone bill surprises by blocking calls to specific numbers, to numbers starting with certain digits (for example pay per call numbers) or to specific area codes.

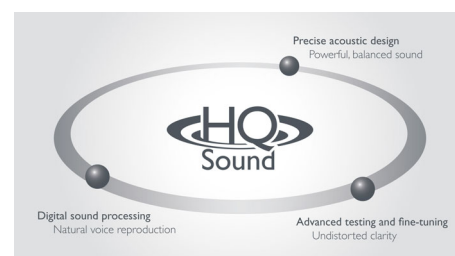
M8881B/63

Smart cable management



The smart cable management system cleverly hides the wires from sight. Intelligently designed concealed sockets and an internal cable guide ensure everything is clutter free and neatly tucked away.

Superb sound quality



HQ-Sound refers to high quality acoustic engineering that results in voice quality so crisp and natural it is almost like being there in person. High quality components, precise acoustic design, advanced testing and fine tuning reflect decades of experience in high end audio systems and headphones. With MySound you can tune voice reproduction to your liking.

Up to 60 min. message



With up to 60 minutes recording time on your answering machine, you'll never miss an important message.

Specifications

Sound

- HQ-Sound
- Sound Profile: MySound
- Ringtones on handset: 10 HQ ringtones

Picture/Display

- Display size: 5.1cm/2.0"
- Display type: TFT 16-bit color
- Backlight: Yes
- Backlight color: White

Answering Machine

- Recording time capacity: Up to 60 minutes
- Pre-recorded OGM
- Answering machine control: Control from handset

Convenience

- Menu structure in the handset: Icon Menu
- Speakerphone - talk handsfree
- Personalization: Silence mode and Night mode
- Call barring: Restrict the phone from making specific outgoing calls
- Signal strength indicator: 3-bar indicator
- Battery level indicator: 5-bar battery icon
- Intercom - multiple handsets
- Room monitoring
- Date / Time display
- Alarm Clock
- Battery charge indication
- Signal strength indication
- Programmable hot keys: Keys 1 to 9
- Call Management: Call Waiting*, Caller ID*, Microphone mute, Missed Calls, Received Calls
- Keypad lock
- Key tone on/off
- Auto hang up
- Multi base capability: 1
- Multi handset capability: Up to 4 handset
- Number of keys: 23
- Backlit keypad: White
- Enlarge dialing digit
- Up to 18 hrs talk time
- Up to 250 hrs standby time
- Charge time: 8 hours
- Line cord length: 1.8m

- Power cord length: 1.8m
- Range: Open field <300m; in door <50m
- Ease of Use: Full Duplex Handsfree

Memory Capacity

- VIP Caller Identification
- Phonebook: 250 names and numbers
- Redial List Capacity: 20 entries
- Call log entries: 50 entries
- Phonebook store in the base

Power

- Battery capacity: 550 mAh
- Battery type: AAA NiMH Rechargeable
- Mains power: AC 100-240V ~50/60Hz
- Power Consumption: <0.75W

Security

- Transmission encryption : Yes

Network Features

- Compatible: GAP
- Network service menu: Available only for operator version

SAR Value

- Philips handsets: <0.1 W/kg

Eco Design

- Eco+

Tuner/Reception/Transmission

- Frequency band: 1880-1900 MHz
- RF power output: 22.80 dBm

Packaging dimensions

- EAN: 69 23410 73268 9
- Packaging dimensions (W x H x D): 31.8 x 9.5 x 8 cm
- Gross weight: 0.577 kg
- Nett weight: 0.439 kg
- Number of products included: 1
- Packaging type: Carton
- Tare weight: 0.138 kg
- Type of shelf placement: Laying



Issue date 2015-04-24

Version: 3.2.2

12 NC: 8670 001 18415
EAN: 69 23410 73268 9

© 2015 Koninklijke Philips N.V.
All Rights reserved.

Specifications are subject to change without notice.
Trademarks are the property of Koninklijke Philips N.V.
or their respective owners.

www.philips.com