

Always there to help you

Register your product and get support at
www.philips.com/support

BTB1370



User manual

PHILIPS

Contents

| | | | |
|-------------------------------------|-----------|------------------------------|-----------|
| 1 Important | 2 | 7 Product information | 18 |
| Safety | 2 | Specifications | 18 |
| | | USB playability information | 19 |
| 2 Your micro system | 3 | Supported MP3 disc formats | 19 |
| Introduction | 3 | RDS program types | 20 |
| What's in the box | 3 | | |
| Overview of the main unit | 4 | 8 Troubleshooting | 21 |
| Overview of the remote control | 5 | | |
| | | 9 Notice | 23 |
| 3 Get started | 7 | Compliance | 23 |
| Connect speakers | 7 | Care of the environment | 23 |
| Connect FM antenna | 7 | Care for your product | 24 |
| Connect power | 8 | | |
| Prepare the remote control | 8 | | |
| Demonstrate the features | 8 | | |
| Set clock | 8 | | |
| Turn on | 9 | | |
| | | | |
| 4 Play | 10 | | |
| Play from disc | 10 | | |
| Play from USB | 10 | | |
| Control play | 11 | | |
| Skip to a track | 11 | | |
| Program tracks | 11 | | |
| Play from Bluetooth-enabled devices | 11 | | |
| | | | |
| 5 Listen to the radio | 13 | | |
| Listen to DAB+ radio | 13 | | |
| Listen to FM radio | 14 | | |
| | | | |
| 6 Other features | 16 | | |
| Set the alarm timer | 16 | | |
| Set the sleep timer | 16 | | |
| Listen to an external device | 16 | | |
| Charge your devices | 17 | | |

1 Important

Safety

- Make sure that there is enough free space around the product for ventilation.
- Only use attachments or accessories specified by the manufacturer.
- Battery usage CAUTION – To prevent battery leakage which may result in bodily injury, property damage, or damage to the product:
 - Install the battery correctly, + and - as marked on the product.
 - Remove the battery when the product is not used for a long time.
 - The battery shall not be exposed to excessive heat such as sunshine, fire or the like.
- The product shall not be exposed to dripping or splashing.
- Do not place any sources of danger on the product (e.g. liquid filled objects, lighted candles).
- Where the mains plug or an appliance coupler is used as the disconnect device, the disconnect device shall remain readily operable.



Warning

- Never remove the casing of this device.
- Never lubricate any part of this device.
- Never place this device on other electrical equipment.
- Keep this device away from direct sunlight, naked flames or heat.
- Never look into the laser beam inside this device.
- Ensure that you always have easy access to the power cord, plug, or adaptor to disconnect this device from the power.

2 Your micro system

Congratulations on your purchase, and welcome to Philips! To fully benefit from the support that Philips offers, register your product at www.philips.com/welcome.

Introduction

With this unit, you can:

- enjoy audio from discs, Bluetooth-enabled devices, USB storage devices, or other external devices;
- listen to Digital Audio Broadcasting (DAB) or FM radio stations.

You can enjoy one of the following sound effects:

- Balance, Clear, Powerful, Warm, and Bright

The unit supports these media formats:

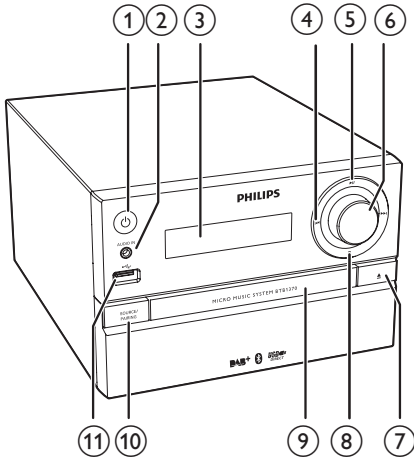


What's in the box

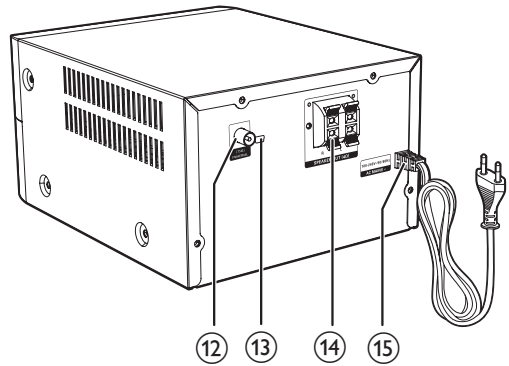
Check and identify the contents of your package:

- Main unit
- 2 x speakers with cables
- 1 x FM wire antenna
- Remote control (with one AAA battery)
- Short User Manual
- Safety&Notice sheet

Overview of the main unit

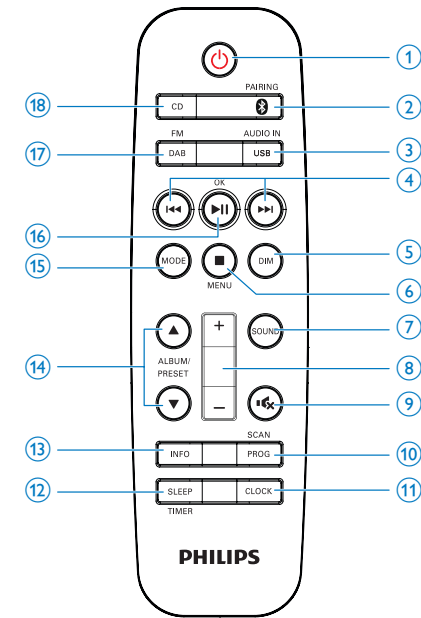


- ① **Power**
 - Turn the unit on or off.
 - Switch to standby mode or Eco standby mode.
- ② **AUDIO IN**
 - Audio input socket (3,5mm) for an external audio device.
- ③ **Display panel**
- ④ **⏮ / ⏭**
 - Skip to the previous/next track.
 - Search within a track/disc/USB.
 - Tune to a radio station.
 - Adjust time.
- ⑤ **▶⏸**
 - Start, pause, or resume play.
- ⑥ **Volume knob**
 - Adjust volume.
- ⑦ **▲**
 - Open/close the disc compartment.
- ⑧ **■**
 - Stop play or erase a program.
- ⑨ **Disc compartment**



- ⑩ **SOURCE/PAIRING**
 - Press to select a source: DISC, BLUETOOTH, USB, DAB, TUNER, AUDIO IN.
 - In Bluetooth mode with two devices connected, press and hold for 3 seconds to disconnect the first connected device and enter pairing mode.
 - In Bluetooth mode with one device connected, press and hold for 3 seconds to enter pairing mode.
- ⑪ **USB**
 - USB socket.
- ⑫ **FM AERIAL**
- ⑬ **Micro USB socket**
 - For DAB upgrade only.
 - FM antenna socket.
- ⑭ **SPEAKER OUT**
 - Speaker sockets.
- ⑮ **AC MAINS ~**
 - Power socket.

Overview of the remote control



1

- Turn the unit on or off.
- Switch to standby mode or Eco power standby mode.

2 /PAIRING

- Press to select the BT (Bluetooth) source.
- In Bluetooth mode with two devices connected, press and hold for 3 seconds to disconnect the first connected device and enter pairing mode.
- In Bluetooth mode with one device connected, press and hold for 3 seconds to enter pairing mode.

3 USB/AUDIO IN

- Press repeatedly to select the USB or AUDIO IN source.

4

- Skip to the previous/next track.
- Search within a track/disc/USB.
- Tune to a radio station.
- Adjust time.

5 DIM

- Adjust display brightness.

6 /MENU

- Stop play or erase a program.
- Access the DAB+ or FM menu.

7 SOUND

- Select a preset sound effect.

8 +/-

- Adjust volume.

9

- Mute or restore volume.

10 PROG/SCAN

- Program tracks.
- Program radio stations.
- Scan FM or DAB+ radio stations.

11 CLOCK

- Set the clock.
- View clock information.

12 SLEEP/TIMER

- Set sleep timer.
- Set alarm timer.

13 INFO

- Display the current status or disc information.
- For selected FM radio stations, display RDS information (if available).

14 ALBUM/PRESET /

- Select a preset radio station.
- Skip to the previous/next album.

15 MODE

- Select repeat or shuffle play mode.

16 /OK

- Start, pause, or resume play.
- Confirm a selection.
- Switch between FM stereo and mono broadcast.

⑪ **DAB/FM**

- Press repeatedly to select the DAB or FM source.

⑫ **CD**

- Select the DISC source.

3 Get started



Caution

- Use of controls or adjustments or performance of procedures other than herein may result in hazardous laser exposure or other unsafe operation.

Always follow the instructions in this chapter in sequence.

If you contact Philips, you will be asked for the model and serial number of this apparatus. The model number and serial number are on the back of the apparatus. Write the numbers here:

Model No. _____

Serial No. _____

Connect speakers



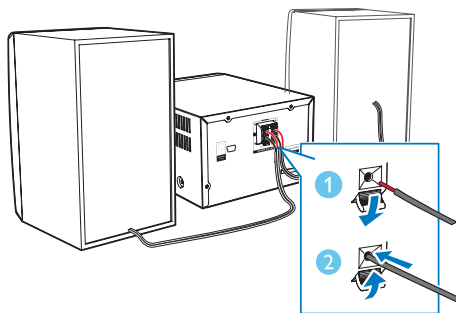
Note

- Insert the stripped portion of each speaker wire into the socket completely.
- For better sound quality, use the supplied speakers only.

- 1 For the right speaker, find the sockets on the back of the main unit marked "R".
- 2 Insert the red wire into the red (+) socket, and the black wire into the black (-) socket.
- 3 For the left speaker, find the sockets on the main unit marked "L".
- 4 Repeat step 2 to insert the left speaker wire.

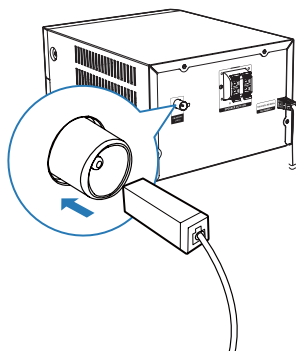
To insert each speaker wire:

- 1 Hold down the socket flap.
- 2 Insert the speaker wire fully.
- 3 Release the socket flap.



Connect FM antenna

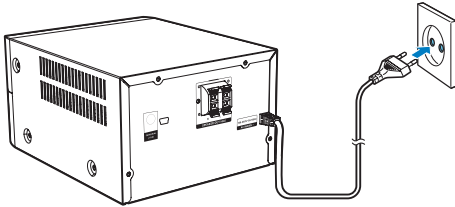
- Before listening to radio, connect the supplied FM antenna to this device.



Connect power

! Caution

- Risk of product damage! Ensure that the power supply voltage corresponds to the voltage printed on the back or the underside of the unit.
- Before you connect the AC power cord, ensure that you have completed all other connections.



Connect the power cable to the wall socket.

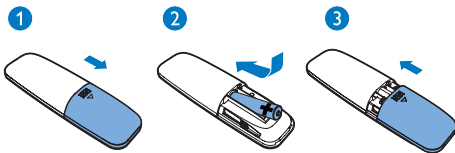
Prepare the remote control

! Caution

- Risk of product damage! When the remote control is not used for long periods, remove the battery.

To insert the remote control battery:

- 1 Open the battery compartment.
- 2 Insert the supplied AAA battery with correct polarity (+/-) as indicated.
- 3 Close the battery compartment.



Demonstrate the features

In standby mode, press **■** to demonstrate features of this device.

- ↳ The features are displayed one by one across the display panel.
- To turn off the demonstration, press **■** again.

Set clock

- 1 In power-on mode, press and hold **CLOCK** on the remote control for 3 seconds.
 - ↳ The [24H] or [12H] hour format is displayed.
- 2 Press **◀▶** to select the [24H] or [12H] hour format.
- 3 press **CLOCK** to confirm.
 - ↳ The hour digits are displayed and begin to blink.
- 4 Repeat steps 2-3 to set the hour and minute, and whether to synchronize the clock with an RDS radio or a DAB station that transmits time signals.

≡ Note

- If no button is pressed within 90 seconds, the unit exits clock setting mode automatically.

* Tip

- You can press **CLOCK** to view clock information in power-on mode.

Turn on

- Press ϕ .
 - ↳ The unit switches to the last selected source.

Switch to standby mode

- Press ϕ again to switch the unit to standby mode.
 - ↳ The clock (if set) is displayed on the panel.

Switch to ECO standby mode:

- Press and hold ϕ for more than 3 seconds.
 - ↳ The display panel is dimmed.



Note

- The unit switches to Eco Power Standby mode after 15 minutes in standby mode.

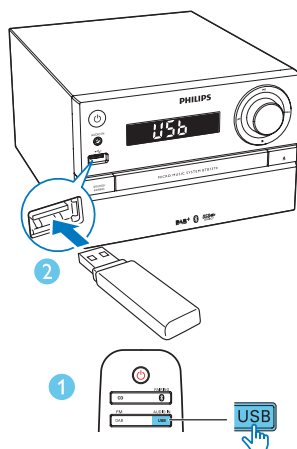
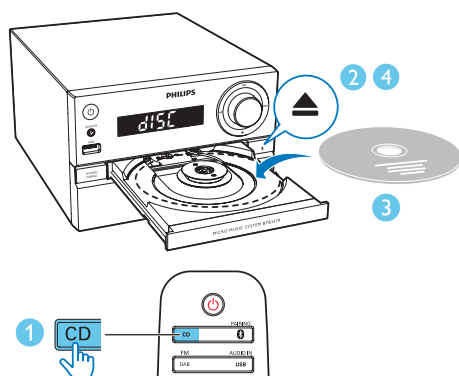
To switch between standby mode and ECO standby mode:

- Press and hold ϕ for more than 3 seconds.

4 Play

Play from disc

- 1 Press **CD** to select the **DISC** source.
- 2 Press **▲** on the front panel to open the disc compartment.
- 3 Insert a disc with the printed side facing upward.
- 4 Press **▲** again to close the disc compartment.
→ Play starts automatically. If not, press **▶II**.



Charge your device

You can charge your mobile device through the USB socket on the unit with a USB cable (not supplied).

Note

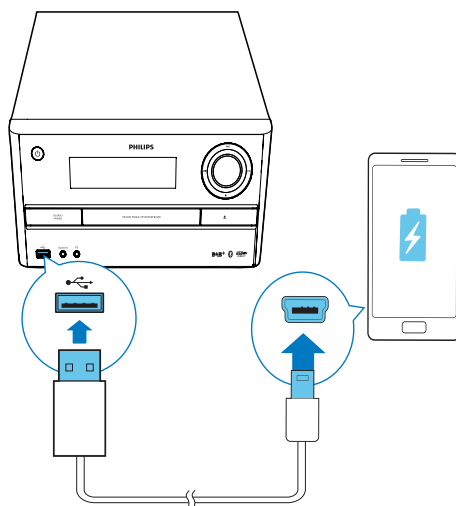
- The maximum current for USB charging is 500 mA.
- The USB socket on the unit is not guaranteed to charge any mobile device.

Play from USB

Note

- Make sure that the USB device contains playable audio content (see 'Product information' on page 18).

- 1 Press **USB/AUDIO IN** repeatedly to select the **USB** source.
- 2 Insert a USB device into the **USB** socket.
→ Play starts automatically. If not, press **▶II**.



Control play

| | |
|---------|---|
| ▶ | Start, pause, or resume play. |
| ■ | Stop play. |
| ▲ / ▼ | Select an album or a folder. |
| ◀◀ / ▶▶ | Press to skip to the previous or next track. Press and hold to search backward/forward within a track. |
| ↺ | Play a track or all tracks repeatedly. |
| ↻ | Play tracks randomly(Not applicable for the programmed tracks). |

Skip to a track

For CD:

Press ◀◀ / ▶▶ to select another track.

For MP3 disc and USB:

- 1 Press **ALBUM/PRESET** ▲ / ▼ to select an album or a folder.
- 2 Press ◀◀ / ▶▶ to select a track or file.

Program tracks

You can program a maximum of 20 tracks.

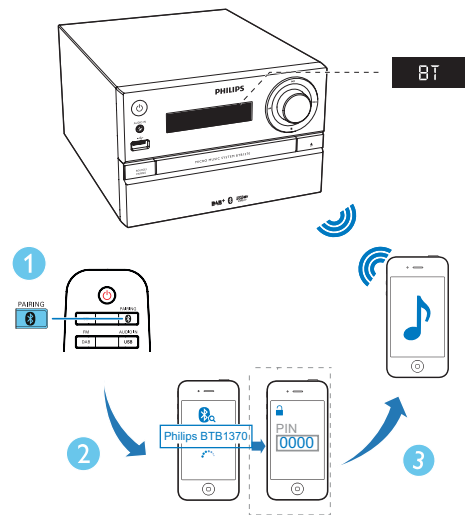
- 1 Stop play, and then press **PROG/SCAN** to activate programming mode.
- 2 For MP3 tracks, press **ALBUM/PRESET** ▲ / ▼ to select an album.
- 3 Press ◀◀ / ▶▶ to select a track, and then press **PROG/SCAN** to confirm.
- 4 Repeat steps 2-3 to program more tracks.
- 5 Press ▶|| to play the programmed tracks.
 - ↳ During play, **[PROG]** (program) is displayed.
 - To erase the program, stop play, and then press ■ / **MENU**.

Play from Bluetooth-enabled devices

Note

- Before pairing a device with the unit, read the user manual of the device for Bluetooth compatibility.
- Compatibility with all Bluetooth devices is not guaranteed.
- Any obstacle between the unit and the device can reduce the operational range.
- The effective operation range between this unit and your Bluetooth enabled device is approximately 10 meters (30 feet).
- The unit can memorize up to 2 previously connected Bluetooth devices.

To stream music to the unit wirelessly, you need to pair your Bluetooth enabled device with the unit.



- 1 Press **0 / PAIRING** to select the **Bluetooth** source.
 - ↳ **[BLUETOOTH]** (Bluetooth) is displayed.
 - ↳ The Bluetooth indicator flashes blue.

- 2 On your device that supports Advanced Audio Distribution Profile (A2DP), enable Bluetooth and search for Bluetooth devices that can be paired (refer to the user manual of the device).
- 3 Select '**Philips BTB1370**' on your Bluetooth enabled device, and if necessary input '0000' as the pairing password.
 - ↳ After successful pairing and connection, the Bluetooth indicator turns solid blue, and the unit beeps.
 - ↳ 'CONNECTED' is displayed.
- 4 Play music on the connected device.
 - ↳ Music streams from your Bluetooth enabled device to this unit.
 - If you fail to search for '**Philips BTB1370**' or cannot pair with this unit, press and hold **0 /PAIRING** for 3 seconds until the Bluetooth indicator flashes quickly to enter pairing mode.

To disconnect the current Bluetooth-enabled device:

- Deactivate Bluetooth on your device; or
- Move the device beyond the communication range.

Pair and connect a second device

You can pair and connect up to two Bluetooth-enabled devices to this unit at the same time.

To connect and play from a second Bluetooth-enabled device

- 1 Press and hold **0 /PAIRING** for 3 seconds until the Bluetooth indicator flashes quickly to enter pairing mode.
- 2 Pair and connect a second device to this unit.
- 3 Play music from either connected device.
 - To play from the other connected device, first stop music streaming from the current device.
 - To disconnect the first connected device, press and hold **0 /PAIRING** for 3 seconds until the Bluetooth indicator flashes quickly to enter pairing mode.

5 Listen to the radio

Tip

- Position the antenna as far as possible from TV or other radiation sources.
- Make sure that you have connected the supplied FM antenna.
- For optimal reception, fully extend and adjust the position of the antenna.

Listen to DAB+ radio

Digital Audio Broadcasting (DAB+) is a way of broadcasting radio digitally through a network of transmitters. It provides you with more choice, better sound quality, and more information.

Tune to DAB+ radio stations

Note

- Make sure that the antenna is fully extended.

- 1 Press **DAB/FM** repeatedly to select the **DAB** source.
↳ **[SCAN]** (scan) is displayed briefly. Then, **[FULL SCAN]** (full scan) is displayed.
- 2 Press **OK** to start full scan.
↳ The unit stores all DAB+ radio stations automatically and broadcasts the first available station.
↳ The station list is memorized in the unit. Next time when you turn on the unit, the station scan does not take place.

Note

- If no DAB+ radio station is found, **[NO DAB]** (no DAB) is displayed, and then **[FULL SCAN]** (full scan) is displayed again.

To tune to a station from the available station list:

- In DAB+ mode, press **◀◀ / ▶▶** repeatedly to navigate through the available DAB+ stations.

Store DAB+ radio stations automatically

Note

- New stations and services will be added in DAB+ broadcast from time to time. To make new DAB+ stations and services available, perform full scan regularly.

- 1 In DAB+ mode, press and hold **PROG/SCAN** for more than 3 seconds.
↳ The unit scans and stores all the available DAB+ radio stations, and broadcasts the first available station.
- 2 Press **◀◀ / ▶▶** to select an automatically stored station, and then press **OK** to confirm.

Store DAB+ radio stations manually

Note

- You can store a maximum of 20 preset DAB+ radio stations.

- 1 Tune to a DAB+ radio station.
- 2 Press **PROG/SCAN** to activate storing mode.
- 3 Press **ALBUM/PRESET ▲ / ▼** to select a preset number.

- 4 Press **PROG/SCAN** to confirm.
 ↳ The name of the preset station is displayed.
- 5 Repeat the above steps to store more DAB+ stations.
- 6 Press **ALBUM/PRESET ▲ / ▼** to select a manually stored station, and then press **OK** to confirm.

Note

- To remove a pre-stored DAB+ radio station, store another station in its place.

Show DAB+ information

- While listening to DAB+ radio, press **INFO** repeatedly to scroll through the following information (if available):
 - Station Name
 - RDS TEXT message
 - Dynamic Label Segment
 - Program Type
 - Ensemble Name
 - Frequency
 - Signal error rate
 - Bit rate
 - Audio status (DAB, DAB+)
 - Time
 - Date

Use DAB+ menu

- 1 In DAB+ mode, press **■ /MENU** to access the DAB+ menu.
- 2 Press **◀◀ / ▶▶** to scroll through the menu options:
 - **[FULL SCAN]** (full scan): scan and store all the available DAB+ radio stations.
 - **[MANUAL]** (manual): tune to a DAB+ station manually.
 - **[PRUNE]** (prune): remove all the invalid stations from the station list.
 - **[SYSTEM]** (system): adjust system settings.

- 3 To select an option, press **OK**.
- 4 If a sub-option is available, repeat steps 2- 3.

[SYSTEM] (system)

- **[RESET]** (reset): reset all settings to factory default.
- **[UPGRADE]** (upgrade): upgrade software if available.
- **[SWVER]** (software version): show the software version of this unit.

Note

- If no button is pressed within 30 seconds, the menu exits.

Listen to FM radio

Tune to a radio station

- 1 Press **DAB/FM** repeatedly to select the tuner source.
- 2 Press and hold **◀◀ / ▶▶** for 3 seconds.
 ↳ The radio tunes to a station with strong reception automatically.

- 3 Repeat step 2 to tune to more stations.

To tune to a weak station:

- Press **◀◀ / ▶▶** repeatedly until you find the optimal reception.

Store FM radio stations automatically

Note

- You can program a maximum of 20 preset radio stations (FM).

- 1 In tuner mode, press **■ /MENU** to access the FM tuner menu.
 ↳ **[SCAN]** is displayed.

- 2 Press **OK**, and then press **◀◀** / **▶▶** to scroll through the menu options:
 - **[STRONG]** (strong stations): scan stations with strong signals only.
 - **[ALL]** (all stations): scan all available FM radio stations.
- 3 Press **OK** to select an option, and then press **■** / **MENU** to exit the menu.
- 4 In FM tuner mode, press **PROG/SCAN**.
 - ↳ The stations scanned are based on the selection at step 2.
 - ↳ The unit broadcasts the first scanned FM radio station.

Store FM radio stations manually

- 1 Tune to an FM radio station.
- 2 Press **PROG/SCAN** to activate storing mode.
 - ↳ **[PROG]** (program) blinks.
- 3 Press **ALBUM/PRESET ▲** / **▼** repeatedly to select a radio frequency.
- 4 Press **PROG/SCAN** again to confirm.
 - ↳ The frequency of the preset station is displayed.
- 5 Repeat the above steps to store more FM stations.

Note

- To remove a pre-stored station, store another station in its place.

Select a preset radio station

- In FM mode, press **ALBUM/PRESET ▲** / **▼** to select a stored radio frequency, and then press **OK** to confirm.

Show RDS information

Radio Data System (RDS) is a service that allows FM stations to show additional information.

- 1 Tune to an RDS station.
- 2 Press **INFO** repeatedly to scroll through the following information (if available).
 - Radio text message
 - Program type
 - Frequency

Select stereo/mono broadcast

Note

- Stereo broadcast is the default setting for tuner mode.
- For stations with weak signals: to improve the reception, switch to monaural sound.
- In FM tuner mode, press **OK** to switch between mono and stereo broadcast.

6 Other features



Tip

- If DISC/USB source is selected, but no disc is placed or no USB connected, the unit switches to the tuner source automatically.

Set the alarm timer

This unit can be used as an alarm clock. You can select **DISC**, **USB**, **DAB**, or **FM** as the alarm source.



Note

- Make sure that you have set the clock correctly.



- 1 In standby mode, press and hold **SLEEP/TIMER** for 3 seconds.
↳ The hour digits are displayed and begin to blink.
- 2 Press **◀◀** / **▶▶** repeatedly to select a source (**DISC**, **USB**, **DAB** or **FM**).
- 3 Press **SLEEP/TIMER** to confirm.
↳ The hour digits begin to blink.
- 4 Repeat steps 2-3 to set the hour, minute, and adjust the volume of the alarm.



Note

- If no button is pressed within 90 seconds, the unit exits timer setting mode automatically.

To activate or deactivate the alarm timer:

- Press **SLEEP/TIMER** repeatedly to view the alarm information and activate or deactivate the alarm.
↳ If the timer is activated,  is displayed.
↳ If the timer is deactivated, **[TIMER OFF]** (timer off) is displayed and  disappears.

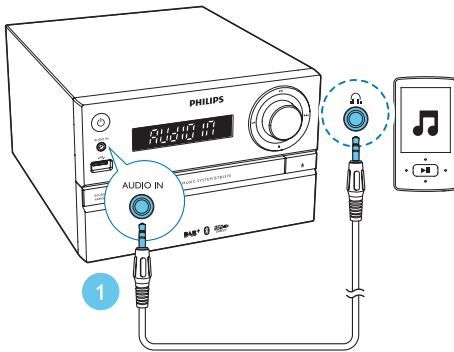
Set the sleep timer

- To set the sleep timer, when the unit is switched on, press **SLEEP/TIMER** repeatedly to select a set period of time (in minutes).
↳ When the sleep timer is activated, **zZ** is displayed. Otherwise, **zZ** disappears.

Listen to an external device

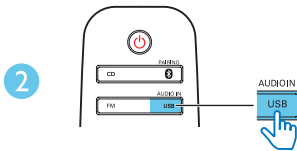
You can enjoy music from an external device connected to the unit through an audio cable.

- 1 Press **USB/AUDIO IN** repeatedly to select the **AUDIO IN** source.
- 2 Connect an audio cable (not supplied) between:
 - the **AUDIO IN** socket (3.5 mm) on the unit;
 - and the headphone socket on an external device.
- 3 Play music from the connected external device (see the user manual of the device).



Note

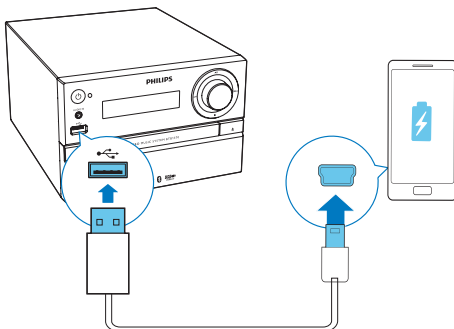
- Gibson Innovations does not guarantee the compatibility of this product with all devices.



Charge your devices

With this micro music system, you can charge your external devices, such as your cell phone, MP3 player or other mobile devices.

- 1 Use a USB cable to connect the USB socket of product with the USB socket of your devices.



- 2 Connect the product to power.
↳ Once the device is recognized, the charging starts.

7 Product information

Note

- Product information is subject to change without prior notice.

Specifications

Amplifier

| | |
|------------------------------------|-----------------------------|
| Total Output Power | Maximum 30W |
| Frequency Response | 60 -20KHz, +/-3dB |
| Total Harmonic Distortion | <1% |
| Signal to Noise Ratio (A-weighted) | ≥75dBA |
| AUDIO IN | 600mV+/-100mV RMS 22kohm |

Disc

| | |
|---------------------------|----------------------------|
| Laser Type | Semiconductor |
| Disc Diameter | 12 cm/8 cm |
| Support Disc | CD-DA, CD-R, CD-RW, MP3-CD |
| Audio DAC | 24 Bits/44.1 kHz |
| Total Harmonic Distortion | <3% (1 kHz) |
| Frequency Response | 20Hz - 20kHz (44.1kHz) |
| S/N Ratio | ≥80dBA |

Bluetooth

| | |
|--------------------------|------------------------------|
| Bluetooth version | V2.1+EDR |
| Bluetooth frequency band | 2.4GHz ~ 2.48GHz ISM Band |
| Range | 10 m (free space) |

USB

| | |
|--------------------|----------------|
| USB Direct Version | 2.0 full speed |
| USB Charging | 5V, 500mA |

Tuner (FM)

| | |
|---------------------------|--------------|
| Tuning Range | 87.5-108 MHz |
| Tuning grid | 50 KHz |
| Sensitivity | |
| - Mono, 26 dB S/N Ratio | ≤22 dBf |
| - Stereo, 46 dB S/N Ratio | ≥48 dBf |
| Search Selectivity | ≤32dBf |
| Total Harmonic Distortion | <3% |
| Signal to Noise Ratio | ≥45dB |

DAB

| | |
|-------------|-----------------|
| DAB Range | 170MHz - 240MHz |
| Sensitivity | ≥ - 90dBm |

Speakers

| | |
|-------------------|----------------------------|
| Speaker Impedance | 4 ohm |
| Speaker Driver | 100mm woofer; 20mm tweeter |
| Sensitivity | 83+/- 3 dB/m/W |

General information

| | |
|-------------------------------|---------------------|
| AC power | 100V-240V, 50/60 HZ |
| Operation Power Consumption | ≤20W |
| Eco Standby Power Consumption | ≤0.5W |
| Dimensions | |
| - Main Unit (W × H × D) | 181 × 121 × 227mm |
| - Speaker Box (W × H × D) | 120 × 195 × 143 mm |
| Weight | |
| - Main Unit | 1.54 kg |
| - Speaker Box | 2 × 0.81 kg |

USB playability information

Compatible USB devices:

- USB flash memory (USB2.0 or USB1.1)
- USB flash players (USB2.0 or USB1.1)
- memory cards (requires an additional card reader to work with this unit)

Supported USB formats:

- USB or memory file format: FAT12, FAT16, FAT32 (sector size: 512 bytes)
- MP3 bit rate (data rate): 32-320 Kbps and variable bit rate
- Directory nesting up to a maximum of 8 levels
- Number of albums/ folders: maximum 99
- Number of tracks/titles: maximum 999
- ID3 tag v2.0 or later
- File name in Unicode UTF8 (maximum length: 32 bytes)
- FLAC files

Unsupported USB formats:

- Empty albums: an empty album is an album that does not contain MP3/ WMA files, and will not be shown in the display.
- Unsupported file formats are skipped. For example, word documents (.doc) or MP3 files with extension .dlf are ignored and not played.
- WMA, AAC, WAV, PCM audio files
- DRM protected WMA files (.wav, .m4a, .m4p, .mp4, .aac)
- WMA files in Lossless format
- FLAC via USB

Supported MP3 disc formats

- ISO9660, Joliet
- Maximum title number: 128 (depending on file name length)
- Maximum album number: 99
- Supported sampling frequencies: 32 kHz, 44.1 kHz, 48 kHz
- Supported Bit-rates: 32~256 (kbps), variable bit rates

RDS program types

| | |
|----------|---------------------------------|
| NO TYPE | No RDS programme type |
| NEWS | News services |
| AFFAIRS | Politics and current affairs |
| INFO | Special information programs |
| SPORT | Sports |
| EDUCATE | Education and advanced training |
| DRAMA | Radio plays and literature |
| CULTURE | Culture, religion and society |
| SCIENCE | Science |
| VARIED | Entertainment programs |
| POP M | Pop music |
| ROCK M | Rock music |
| MOR M | Light music |
| LIGHT M | Light classical music |
| CLASSICS | Classical music |
| OTHER M | Special music programs |
| WEATHER | Weather |
| FINANCE | Finance |
| CHILDREN | Children's programs |
| SOCIAL | Social Affairs |
| RELIGION | Religion |
| PHONE IN | Phone In |
| TRAVEL | Travel |
| LEISURE | Leisure |
| JAZZ | Jazz Music |
| COUNTRY | Country Music |
| NATION M | National Music |
| OLDIES | Oldies Music |
| FOLK M | Folk Music |
| DOCUMENT | Documentary |
| TES | Alarm Test |
| ALARM | Alarm |

8 Troubleshooting



Warning

- Never remove the casing of this device.

To keep the warranty valid, never try to repair the system yourself.

If you encounter problems when using this device, check the following points before requesting service. If the problem remains unsolved, go to the Philips Web page (www.philips.com/support). When you contact Philips, make sure that the device is nearby and the model number and serial number are available.

No power

- Make sure that the AC power cord of the device is connected properly.
- Make sure that there is power at the AC outlet.
- As a power-saving feature, the system switches off automatically 15 minutes after track play reaches the end and no control is operated.

No sound or poor sound

- Adjust the volume.
- Check that the speakers are connected correctly.
- Check if the stripped speaker wires are clamped.

No response from the unit

- Disconnect and reconnect the AC power plug, then turn on the unit again.

Remote control does not work

- Before you press any function button, first select the correct source with the remote control instead of the main unit.
- Reduce the distance between the remote control and the unit.
- Insert the battery with its polarities (+/– signs) aligned as indicated.
- Replace the battery.
- Aim the remote control directly at the sensor on the front of the unit.

No disc detected

- Insert a disc.
- Make sure that the disc is inserted with printed side facing upward.
- Wait until the moisture condensation at the lens has cleared.
- Replace or clean the disc.
- Use a finalized CD or correct format disc.

Cannot display some files in USB device

- The number of folders or files in the USB device has exceeded a certain limit. This phenomenon is not a malfunction.
- The formats of these files are not supported.

USB device not supported

- The USB device is incompatible with the unit. Try another one.

Poor radio reception

- Increase the distance between the unit and your TV or other radiation sources.
- Connect and fully extend the supplied antenna.

Music playback is unavailable on this unit even after successful Bluetooth connection.

- The device cannot be used to play music through this unit wirelessly.

The audio quality is poor after connection with a Bluetooth-enabled device.

- The Bluetooth reception is poor. Move the device closer to this unit or remove any obstacle between them.

Bluetooth cannot be connected with this unit.

- The device does not support the profiles required for this unit.
- The Bluetooth function of the device is not enabled. Refer to the user manual of the device to find out how to enable the function.
- This unit is not in pairing mode.
- This unit is already connected with another Bluetooth-enabled device. Disconnect that device and then try again.

The paired mobile device connects and disconnects constantly.

- The Bluetooth reception is poor. Move the device closer to this unit or remove any obstacle between them.
- Some mobile phones may connect and disconnect constantly when you make or end calls. This does not indicate any malfunction of this unit.
- For some devices, the Bluetooth connection may be deactivated automatically as a power-saving feature. This does not indicate any malfunction of this unit.

Timer does not work

- Set the clock correctly.
- Switch on the timer.

Clock/timer setting erased

- Power has been interrupted or the power cord has been disconnected. Reset the clock/timer.

9 Notice

Any changes or modifications made to this device that are not expressly approved by Gibson Innovations may void the user's authority to operate the equipment.

Compliance

CE 0890

Declaration of conformity

Hereby, Gibson Innovations declares that this product is in compliance with the essential requirements and other relevant provisions of Directive 1999/5/EC. You can find the Declaration of Conformity on www.philips.com/support.

This apparatus includes this label:



Care of the environment

Disposal of your old product and battery



Your product is designed and manufactured with high quality materials and components, which can be recycled and reused.



This symbol on a product means that the product is covered by European Directive 2012/19/EU.



This symbol means that the product contains batteries covered by European Directive 2013/56/EU which cannot be disposed of with normal household waste.

Inform yourself about the local separate collection system for electrical and electronic products and batteries. Follow local rules and never dispose of the product and batteries with normal household waste. Correct disposal of old products and batteries helps prevent negative consequences for the environment and human health.

Removing the disposable batteries

To remove the disposable batteries, see battery installation section.

Environmental information

All unnecessary packaging has been omitted. We have tried to make the packaging easy to separate into three materials: cardboard (box), polystyrene foam (buffer) and polyethylene (bags, protective foam sheet.)

Your system consists of materials which can be recycled and reused if disassembled by a specialized company. Please observe the local regulations regarding the disposal of packaging materials, exhausted batteries and old equipment.



The Bluetooth ® word mark and logos are registered trademarks owned by Bluetooth SIG, Inc. and any use of such marks by Gibson is under license. Other trademarks and trade names are those of their respective owners.

Care for your product

- Do not insert any objects other than discs into the disc compartment.
- Do not insert warped or cracked discs into the disc compartment.
- Remove the discs from the disc compartment if you are not using the product for an extended period of time.
- Only use microfiber cloth to clean the product.



Note

- The type plate is located on the back of the product.



2015 © Gibson Innovations Limited. All rights reserved.

This product has been manufactured by, and is sold under the responsibility of Gibson Innovations Ltd., and Gibson Innovations Ltd. is the warrantor in relation to this product.

Philips and the Philips Shield Emblem are registered trademarks of Koninklijke Philips N.V. and are used under license from Koninklijke Philips N.V.

BTB1370_12_UM_V1.0

