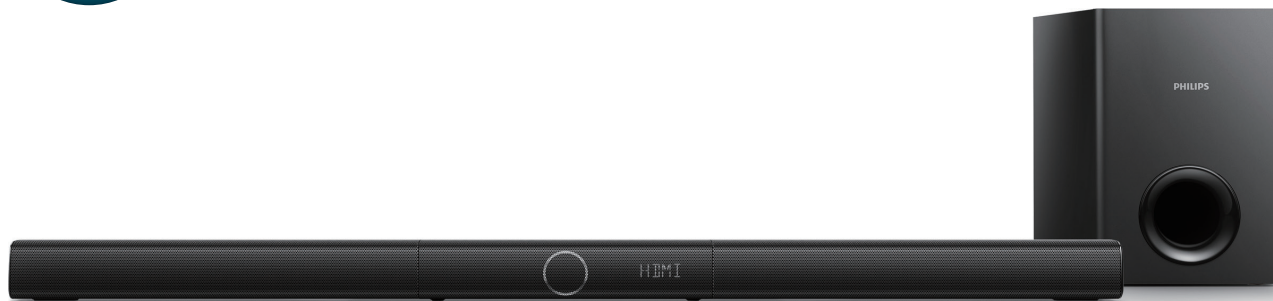


Always there to help you

Register your product and get support at
www.philips.com/support



HTL2193B



Quick start guide

PHILIPS

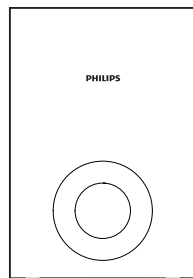


EN Before using your product, read all accompanying safety information

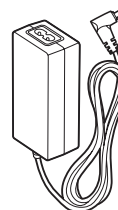
DE Lesen Sie vor Verwendung dieses Produkts alle begleitenden Sicherheitsinformationen

MS-MY Sebelum menggunakan produk anda, baca semua maklumat keselamatan yang disertakan

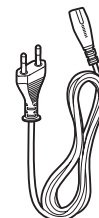
TH ก่อนใช้งานผลิตภัณฑ์ของคุณ โปรดอ่านข้อมูลด้านความปลอดภัยที่มีให้โดยละเอียด



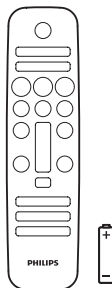
FM Antenna



Power Adapter



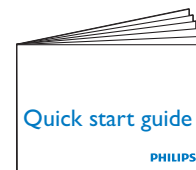
Power Cord



6 X

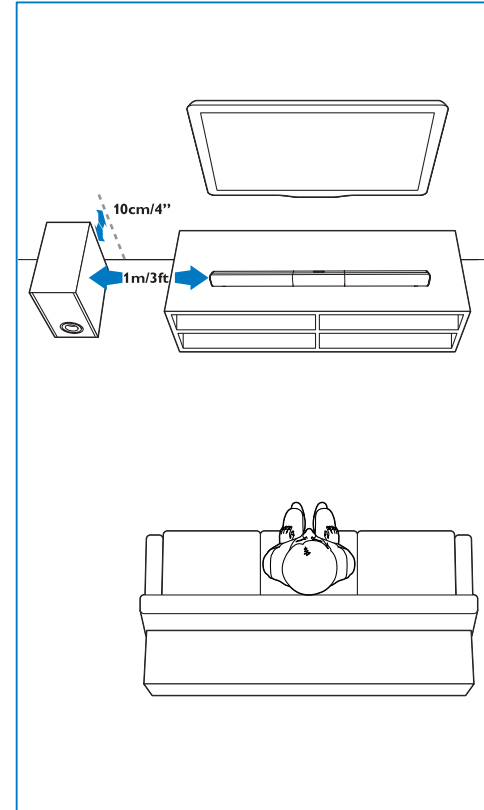
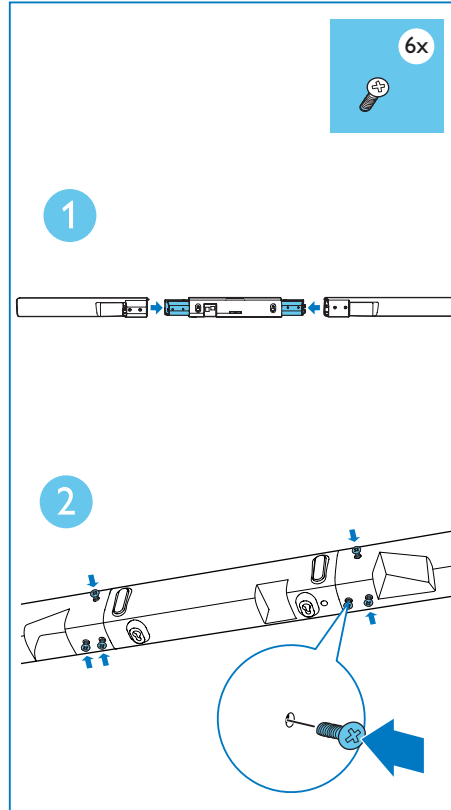


Optical Cable



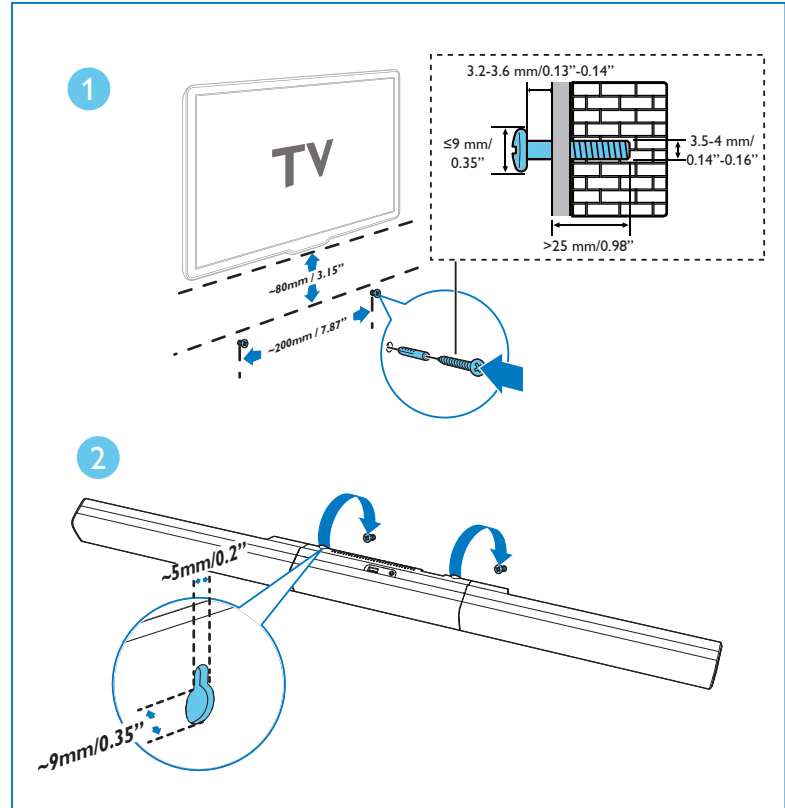
1

- EN** Assemble your product /
Position your product
- DE** Zusammensetzen des Produkts /
Aufstellen des Produkts
- MS-MY** Pasang produk anda /
Letakkan kedudukan produk anda
- TH** ประกอบผลิตภัณฑ์ของคุณ /
จัดวางผลิตภัณฑ์ของคุณ



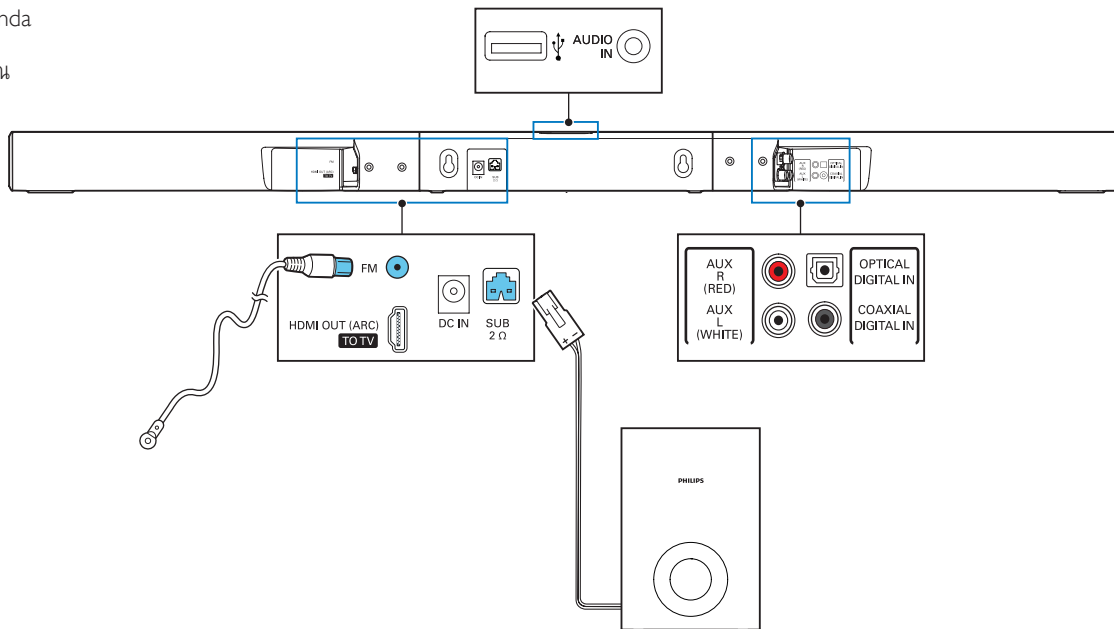


- EN** Wall mount your product (optional)
- DE** Wandmontage Ihres Produkts (optional)
- MS-MY** Lekapkan produk anda dinding (pilihan)
- TH** ยึดผลิตภัณฑ์นี้เข้ากับผนัง (เลือกได้)



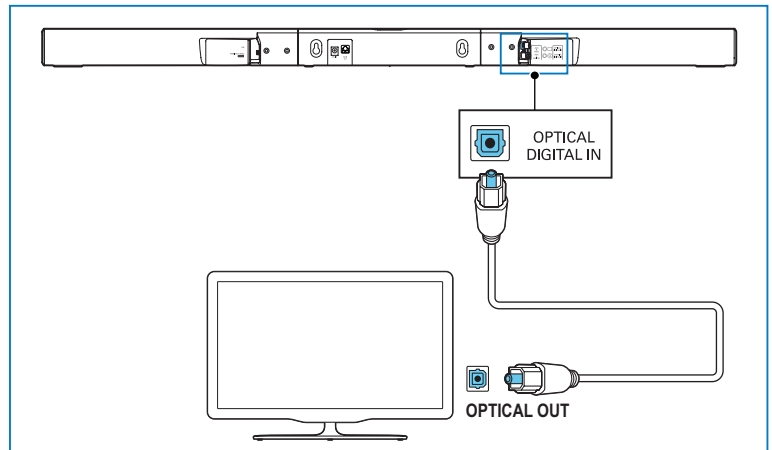
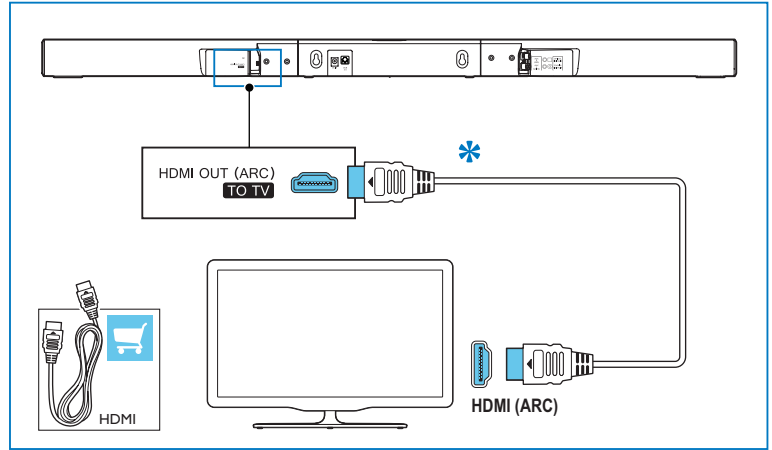
2

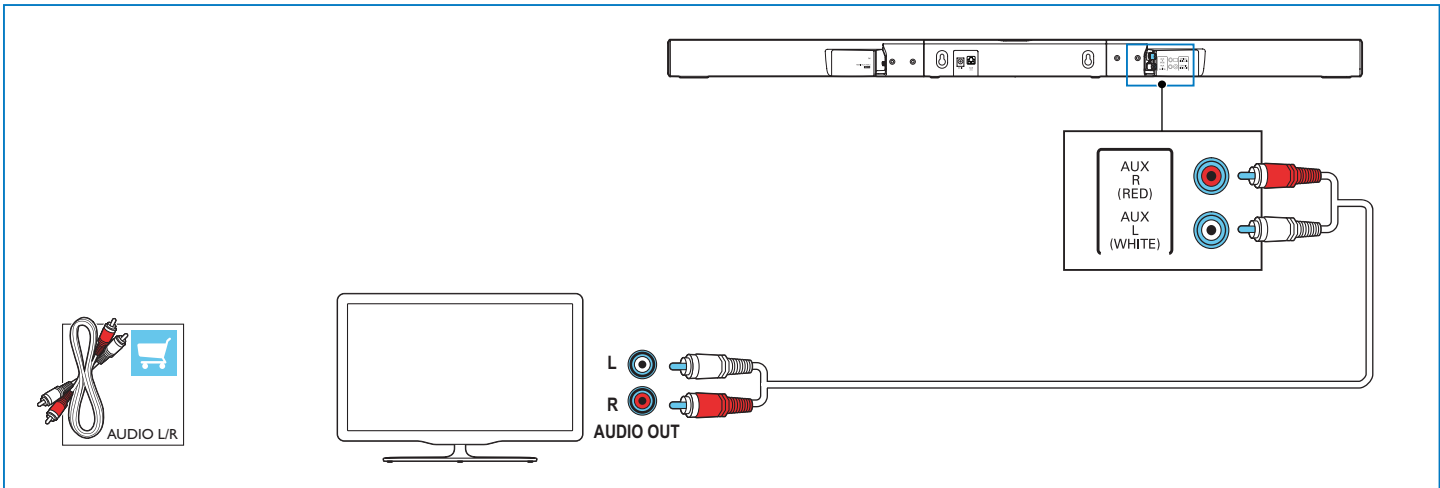
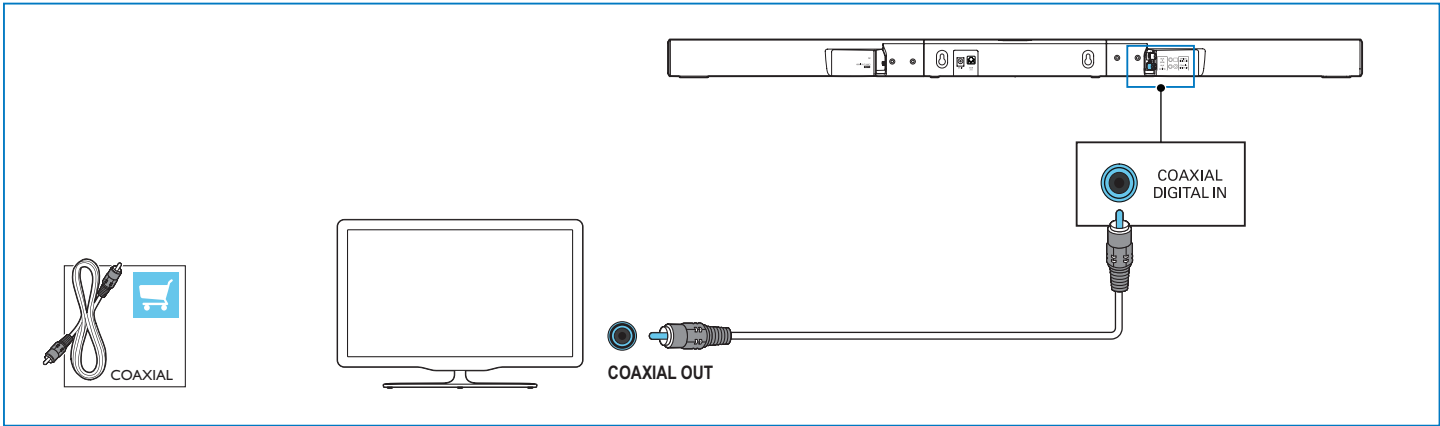
- EN** Connect your product
- DE** Anschließen des Produkts
- MS-MY** Sambungkan produk anda
- TH** เชื่อมต่อผลิตภัณฑ์ของคุณ



3

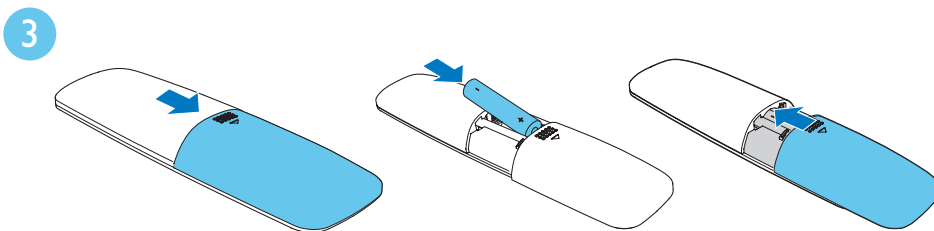
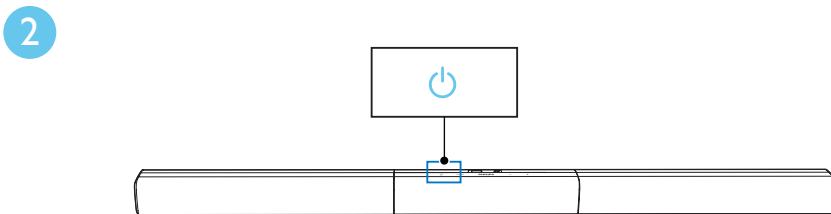
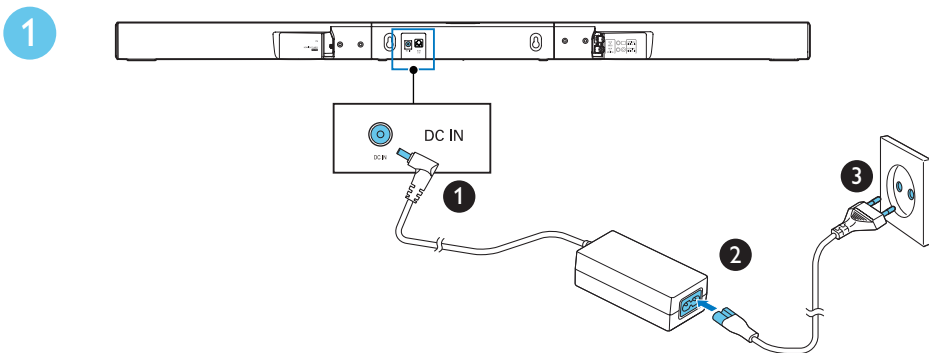
- EN** Connect to TV in one of these ways
* A High Speed HDMI Cable is required
- DE** Herstellen einer Verbindung mit dem Fernseher über einer dieser Möglichkeiten
* Ein High Speed-HDMI-Kabel ist erforderlich
- MS-MY** Sambung kepada TV dalam salah satu cara berikut
* Kabel HDMI Berkelajuan Tinggi diperlukan
- TH** เชื่อมต่อทีวีด้วยวิธีใดวิธีหนึ่งดังนี้
* ต้องมีสายเคเบิล HDMI ความเร็วสูง





4

- EN** Switch on your product
- DE** Einschalten Ihres Produkts
- MS-MY** Hidupkan produk anda
- TH** เปิดการทำงานผลิตภัณฑ์ของคุณ



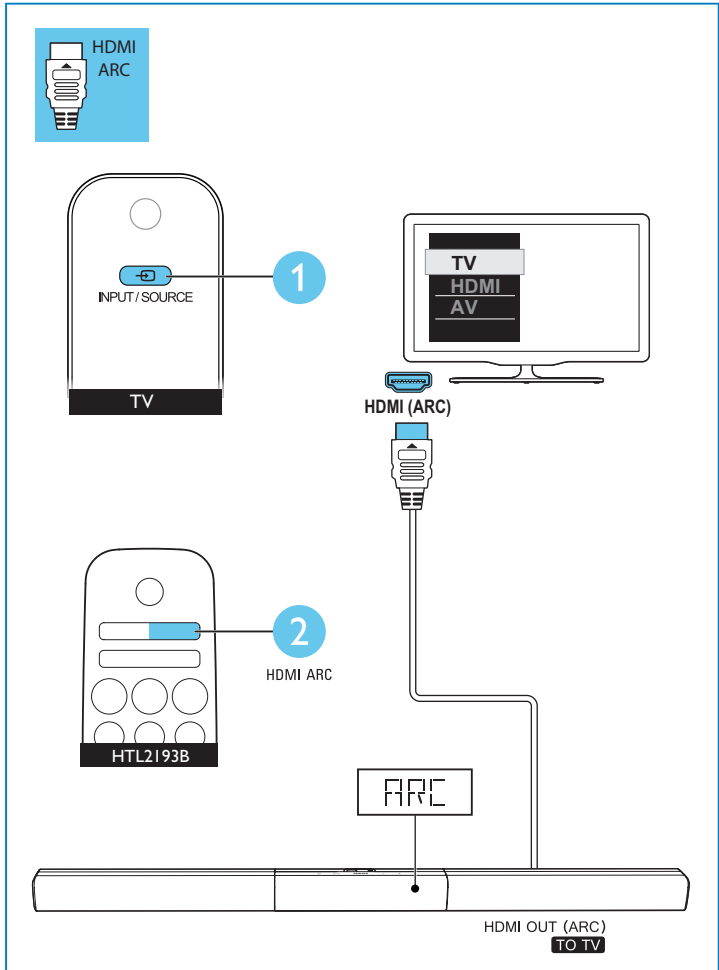
5

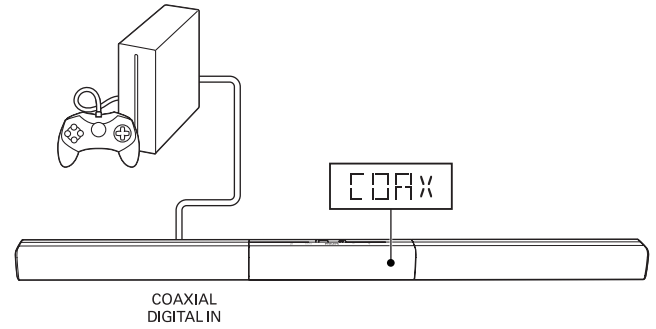
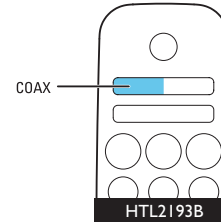
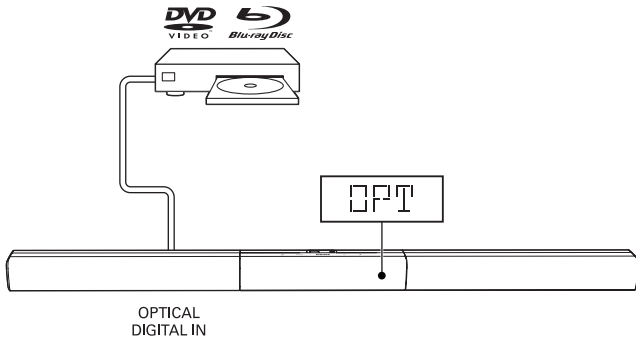
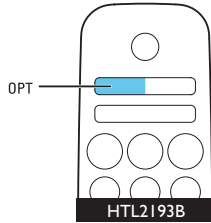
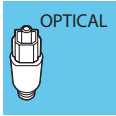
EN Select the correct audio source

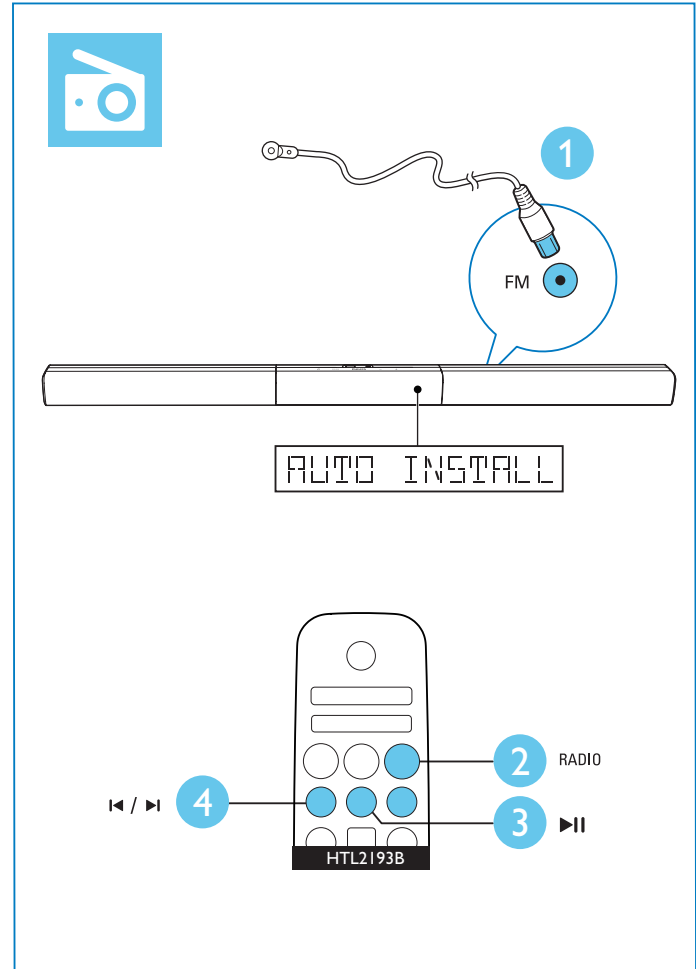
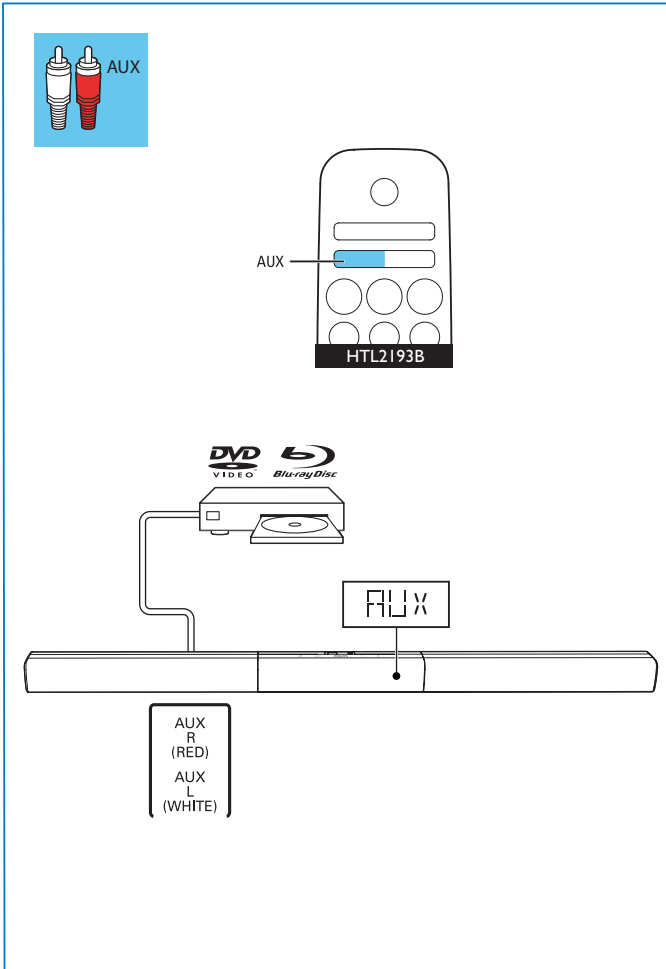
DE Korrekte Audioquelle wählen

MS-MY Pilih sumber audio yang betul

TH เลือกแหล่งเสียงที่ถูกต้อง

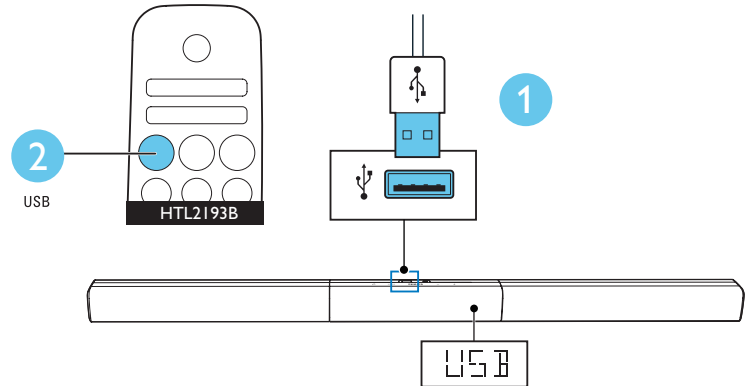
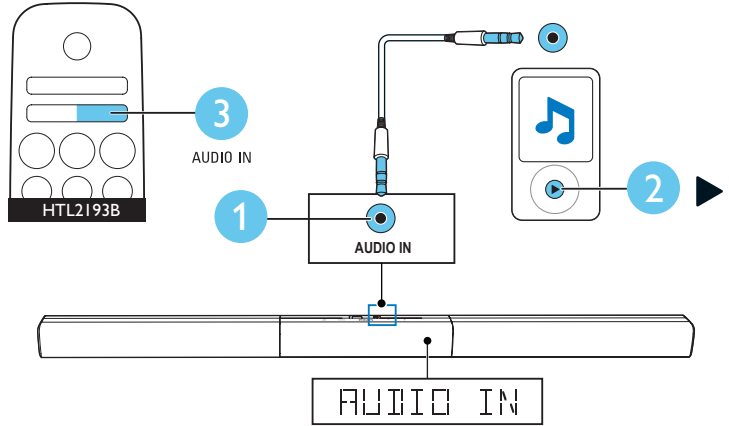






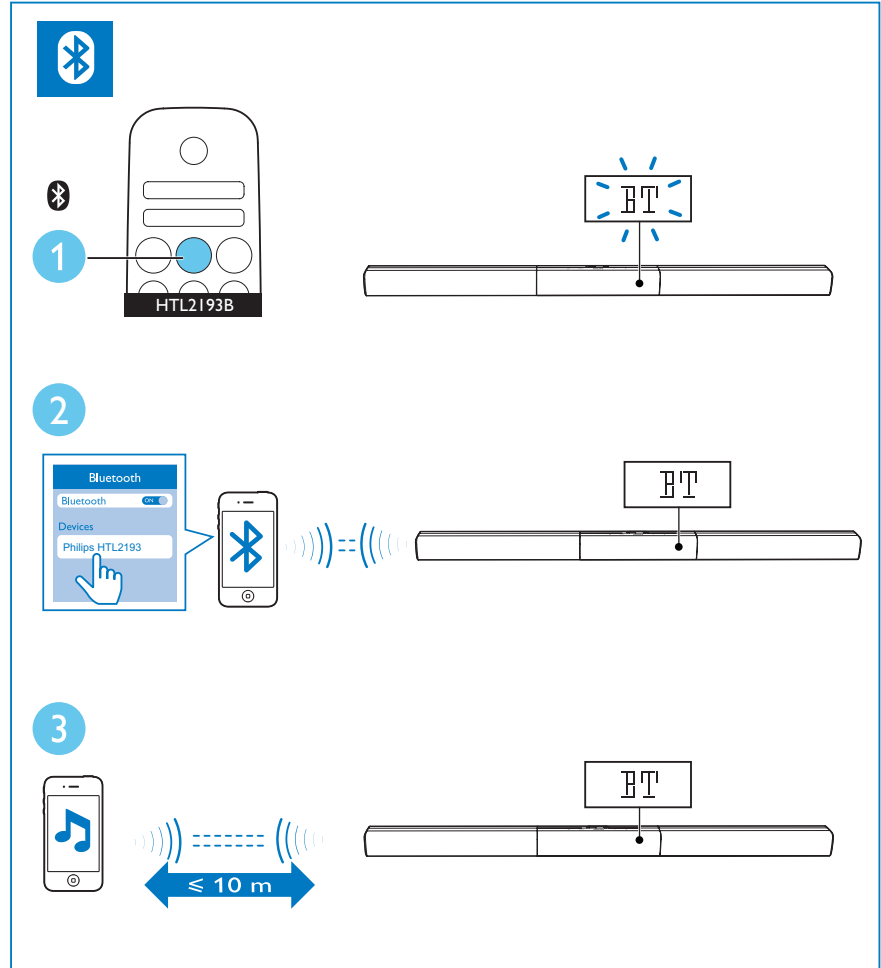
6

- EN** Play other devices
- DE** Andere Geräte abspielen
- MS-MY** Mainkan peranti lain
- TH** เล่นอุปกรณ์อื่น



7

- EN** Play audio through Bluetooth
- DE** Audiowiedergabe über Bluetooth
- MS-MY** Mainkan audio melalui Bluetooth
- TH** การเล่นเสียงผ่านทาง Bluetooth





EN For more information about using this product, visit www.philips.com/support

DE Weitere Informationen zur Verwendung dieses Produkts finden Sie unter www.philips.com/support

MS-MY Untuk maklumat lanjut tentang penggunaan produk ini, lawati www.philips.com/support

TH สำหรับข้อมูลเพิ่มเติมเกี่ยวกับ การใช้ผลิตภัณฑ์นี้ โปรดเยี่ยมชม www.philips.com/support



www.philips.com/support



Manufactured under license from Dolby Laboratories. Dolby, Pro Logic, and the double-D symbol are trademarks of Dolby Laboratories.



The terms HDMI and HDMI High-Definition Multimedia Interface, and the HDMI Logo are trademarks or registered trademarks of HDMI Licensing LLC in the United States and other countries.



The Bluetooth® word mark and logos are registered trademarks owned by Bluetooth SIG, Inc. and any use of such marks by Gibson Innovations Limited is under license. Other trademarks and trade names are those of their respective owners.



Specifications are subject to change without notice
2015 © Gibson Innovations Limited. All rights reserved.
This product has been manufactured by, and is sold under the responsibility of Gibson Innovations Ltd., and
Gibson Innovations Ltd. is the warrantor in relation to this product. Philips and the Philips Shield Emblem
are registered trademarks of Koninklijke Philips N.V. and are used under license from Koninklijke Philips N.V.

HTL2193B_98_QSG_V4.0

