

Quick start guide

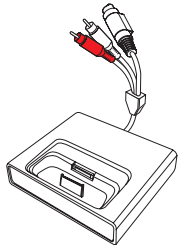


1 Connect

2 Install

3 Enjoy

What's in the box



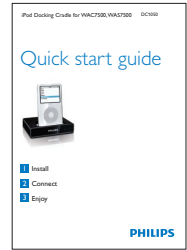
Docking cradle with fixed cable



RCA extension cable



8x iPod dock adapter



Quick start guide

Important! For indoor use only!

What else you'll need.



WAC7500

or



WAS7500



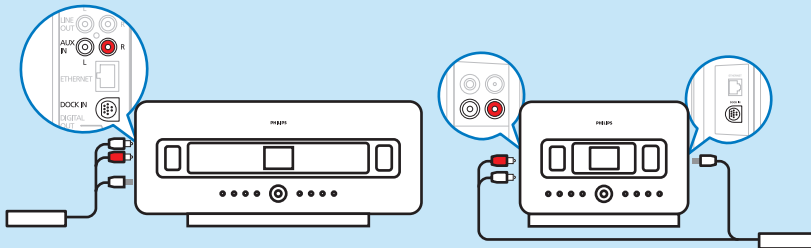
iPod

Important!

Only connect one of the following supported devices:
Apple iPod (iPod video, iPod nano, iPod Photo, iPod mini)

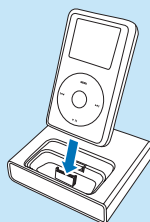
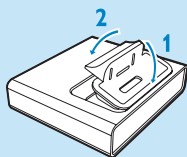
Connect

Connect the cable of the iPod docking cradle with the Music Center or Music Station (RCA red & white plugs to red & white Audio IN jacks, DC 9-pins DIN plug to 9-pins DIN jack):



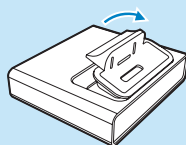
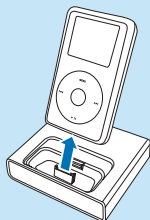
2 Install

- 1 Insert a dock adapter that fits your iPod.
- 2 Plug your portable player into the cradle.



Uninstall

- 1 Dismount the iPod.
- 2 Pop up the dock adapter.



3 Enjoy

When the connection is established and the iPod is connected, turn on the Music Center or Station.

Press **HOME** and select [**Portable**] > [**iPod**].

Use the remote control of the Center or Station to control the following iPod functions: Navigation, Volume, Skip/Search, Play/Pause, Repeat, Shuffle.

Play

Press **▶||** to play.

During play, press **▶||** to toggle between play and pause.

Adjust volume

Press **Volume +/-** to increase/decrease the volume.

Skip to previous/next track

Press ◀◀ to skip to the previous track.

Press ▶▶ to skip to the next track.

You can also use the navigation control ◀▶▶▼ to navigate the iPod menu and select a track.

Charge

When the iPod is connected to the docking cradle and the Music Center or Station is turned on, the battery of the iPod charges automatically.

Troubleshooting

No sound	Check if the cable is well connected.
No response from the remote control	Point the remote control directly towards the Music Center or Station. Check that the batteries inside the remote control are correctly inserted and fresh. Only the buttons Volume +/-, Skip/Search, and Play/Pause are effective.
Sound adjustment impossible	Check if the cable is well connected.

Specifications

RCA red/white audio OUT plus 9-pins DIN: 3.5 mm (fixed cable)



Specifications are subject to change without notice.
Trademarks are the property of
Koninklijke Philips Electronics N.V. or their respective owners
© 2008 Koninklijke Philips Electronics N.V.
All rights reserved.

www.philips.com



Printed in China
wk8221