

Register your product and get support at
www.philips.com/welcome

HTS3551



EN User manual

ES Manual del usuario

PT-BR Manual do Usuário

PHILIPS

Contents

1	Help and support	4
	FAQs	4
	Contact Philips	4
2	Notice	4
	Copyright	4
	Compliance	4
	Mains fuse (UK only)	4
	Open source software	5
	Trademarks	5
3	Important	6
	Safety	6
	Care for your product	7
	Care of the environment	7
4	Your home theater	8
	Main unit	8
	Remote control	8
5	Connect your home theater	10
	Speakers	10
	Connectors	11
	Connect to TV	12
	Connect audio from TV and other devices	13
	Internet	14
6	Use your home theater	15
	Choose sound	15
	Discs	16
	USB storage devices	18
	DivX	18
	Audio, video, and picture options	19
	Radio	20
	MP3 player	21
	Karaoke	21
	YouTube videos	22
	Picasa Web Albums	22
	EasyLink	23
7	Change settings	24
	Picture	24
	Sound	24
	Language	25
	Parental control	25
	Energy saving	26
	Apply factory settings	26
8	Update software	27
	Check software version	27
	Update software through the Internet	27
	Update software through USB	27
9	Product specifications	28
10	Troubleshooting	31
11	Index	32

1 Help and support

Find answers to many frequently answered questions (FAQs) on your product at www.philips.com.

FAQs

If you have a problem, refer to the frequently asked questions (FAQs) for this home theater at www.philips.com/support.

If you still need help, contact Philips Consumer Care in your country.



Warning

- Do not attempt to repair your home theater yourself. This may cause severe injury, irreparable damage to your home theater, or void your warranty.

Contact Philips

If you contact Philips, you will be asked for the model and serial number of your product. The model number and serial number are on the back or bottom of your product. Note the numbers before you call Philips:

Model No. _____

Serial No. _____

2 Notice

This section contains the legal and trademark notices.

Copyright



**Be responsible
Respect copyrights**

This item incorporates copy protection technology that is protected by U.S. patents and other intellectual property rights of Rovi Corporation. Reverse engineering and disassembly are prohibited.

Copyright in the UK

Recording and playback of material may require consent. See Copyright Act 1956 and The Performers Protection Acts 1958 to 1972.

Compliance



This product is in compliance with the essential requirements and other relevant provisions of Directives 2006/95/EC (Low Voltage), 2004/108/EC (EMC).

Mains fuse (UK only)

This information applies only to products with a UK mains plug.

This product is fitted with an approved molded plug. If you replace the fuse, use one with:

- the ratings shown on the plug,
- a BS 1362 approval, and
- the ASTA approval mark.

Contact your dealer if you are not sure about what type of fuse to use.

Caution: To conform with the EMC directive (2004/108/EC), do not detach the plug from the power cord.

Open source software

Philips Electronics Singapore Pte Ltd hereby offers to deliver, upon request, a copy of the complete corresponding source code for the copyrighted open source software packages used in this product for which such offer is requested by the respective licenses. This offer is valid up to three years after product purchase to anyone in receipt of this information. To obtain source code, please contact open.source@philips.com. If you prefer not to use email or if you do not receive confirmation receipt within a week after mailing to this email address, please write to "Open Source Team, Philips Intellectual Property & Standards, P.O. Box 220, 5600 AE Eindhoven, The Netherlands". If you do not receive timely confirmation of your letter, please email to the email address above. The texts of the licenses and acknowledgements for open source software used in this product are included on a separate leaflet.

Trademarks



"Blu-ray Disc", "Blu-ray" and "Blu-ray Disc" logo are trademarks of Blu-ray Disc Association.



BONUSVIEW™
'BD LIVE' and 'BONUSVIEW' are trademarks of Blu-ray Disc Association.



'DVD Video' is a trademark of DVD Format/Logo Licensing Corporation.

x.v.Colour

'x.v.Colour' is a trademark of Sony Corporation.



Java and all other Java trademarks and logos are trademarks or registered trademarks of Sun Microsystems, Inc. in the United States and/or other countries.



Manufactured under license under U.S. Patent #s: 5,451,942; 5,956,674; 5,974,380; 5,978,762; 6,226,616; 6,487,535; 7,392,195; 7,272,567; 7,333,929; 7,212,872 & other U.S. and worldwide patents issued & pending. DTS and the Symbol are registered trademarks, & DTS-HD, and DTS-HD Master Audio | Essential and the DTS logos are trademarks of DTS, Inc. Product includes software. © DTS, Inc. All Rights Reserved.



Manufactured under license from Dolby Laboratories. Dolby and the double-D symbol are trademarks of Dolby Laboratories.



DivX®, DivX Certified®, DivX Plus™ HD and associated logos are trademarks of DivX, Inc. and are used under license.

ABOUT DIVX VIDEO: DivX® is a digital video format created by DivX, Inc. This is an official DivX Certified® device that plays DivX video. Visit divx.com for more information and software tools to convert your files into DivX video.

ABOUT DIVX VIDEO-ON-DEMAND: This DivX Certified® device must be registered in order to play purchased DivX Video-on-Demand (VOD) movies. To obtain your registration code, locate the DivX VOD section in your device setup menu. Go to vod.divx.com for more information on how to complete your registration.



HDMI, the HDMI logo, and High-Definition Multimedia Interface are trademarks or registered trademarks of HDMI licensing LLC in the United States and other countries.



3 Important

Read and understand all instructions before you use your home theater. If damage is caused by failure to follow instructions, the warranty does not apply.

Safety

Risk of electric shock or fire!

- Never expose the product and accessories to rain or water. Never place liquid containers, such as vases, near the product. If liquids are spilt on or into the product, disconnect it from the power outlet immediately. Contact Philips Consumer Care to have the product checked before use.
- Never place the product and accessories near naked flames or other heat sources, including direct sunlight.
- Never insert objects into the ventilation slots or other openings on the product.
- Where the mains plug or an appliance coupler is used as the disconnect device, the disconnect device shall remain readily operable.
- Disconnect the product from the power outlet before lightning storms.
- When you disconnect the power cord, always pull the plug, never the cable.

Risk of short circuit or fire!

- Before you connect the product to the power outlet, ensure that the power voltage matches the value printed on the back or bottom of the product. Never connect the product to the power outlet if the voltage is different.

Risk of injury or damage to the home theater!

- For wall-mountable products, use only the supplied wall mount bracket. Secure the wall mount to a wall that can support the combined weight of the product and the wall mount. Koninklijke Philips Electronics N.V. bears no responsibility for improper wall mounting that results in accident, injury or damage.
- For speakers with stands, use only the supplied stands. Secure the stands to the speakers tightly. Place the assembled stands on flat, level surfaces that can support the combined weight of the speaker and stand.

- Never place the product or any objects on power cords or on other electrical equipment.
- If the product is transported in temperatures below 5°C, unpack the product and wait until its temperature matches room temperature before connecting it to the power outlet.
- Visible and invisible laser radiation when open. Avoid exposure to beam.
- Do not touch the disc optical lens inside the disc compartment.
- Parts of this product can be made of glass. Handle with care to avoid injury and damage.

Risk of overheating!

- Never install this product in a confined space. Always leave a space of at least four inches around the product for ventilation. Ensure curtains or other objects never cover the ventilation slots on the product.

Risk of contamination!

- Do not mix batteries (old and new or carbon and alkaline, etc.).
- Remove batteries if they are exhausted or if the remote control is not to be used for a long time.
- Batteries contain chemical substances, they should be disposed of properly.

Risk of swallowing batteries!

- The product/remote control may contain a coin type battery, which can be swallowed. Keep the battery out of reach of children at all times!

Care for your product

- Do not insert any objects other than discs into the disc compartment.
- Do not insert warped or cracked discs into the disc compartment.
- Remove discs from the disc compartment if you are not using the product for an extended period of time.
- Use only microfiber cloth to clean the product.

Care of the environment



Your product is designed and manufactured with high quality materials and components, which can be recycled and reused.



When this crossed-out wheeled bin symbol is attached to a product it means that the product is covered by the European Directive 2002/96/EC. Please inform yourself about the local separate collection system for electrical and electronic products.

Please act according to your local rules and do not dispose of your old products with your normal household waste.

Correct disposal of your old product helps to prevent potential negative consequences for the environment and human health.



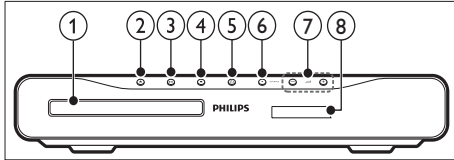
Your product contains batteries covered by the European Directive 2006/66/EC, which cannot be disposed with normal household waste.

Please inform yourself about the local rules on separate collection of batteries because correct disposal helps to prevent negative consequences for the environmental and human health.

4 Your home theater

Congratulations on your purchase, and welcome to Philips! To fully benefit from the support that Philips offers, register your home theater at www.philips.com/welcome.

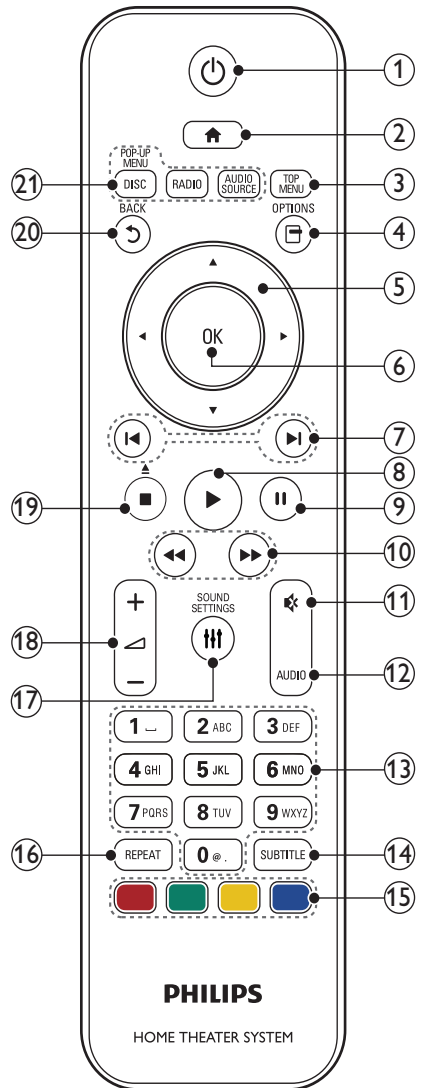
Main unit



- ① Disc compartment
- ② ▲ (Open/Close)
Open or close the disc compartment, or eject the disc.
- ③ ▶|| (Play/Pause)
Start, pause or resume play.
- ④ ■ (Stop)
Stop play.
- ⑤ ⏻ (Standby-On)
Switch the home theater on or to standby.
- ⑥ SOURCE
Select an audio or video source for the home theater.
- ⑦ ▲/▼ +/-
Increase or decrease volume.
- ⑧ Display panel

Remote control

This section includes an overview of the remote control.



- ① **⏻ (Standby-On)**
 - Switch the home theater on or to standby.
 - When EasyLink is enabled, press and hold for at least three seconds to switch all connected HDMI CEC compliant devices to standby.
- ② **🏠 (Home)**
Access the home menu.
- ③ **TOP MENU**
Access the main menu of a disc.
- ④ **☰ (Options)**
Access more play options while playing a disc or a USB storage device.
- ⑤ **Navigation buttons**
 - Navigate menus.
 - In radio mode, press left or right to start auto search.
 - In radio mode, press up or down to tune the radio frequency.
- ⑥ **OK**
Confirm an entry or selection.
- ⑦ **⏮ / ⏭ (Previous/Next)**
 - Skip to the previous or next track, chapter or file.
 - In radio mode, select a preset radio station.
- ⑧ **▶ (Play)**
Start or resume play.
- ⑨ **⏸ (Pause)**
Pause play.
- ⑩ **⏮ / ⏭ (Fast Backward / Fast Forward)**
Search backwards or forward. Press repeatedly to change the search speed.
- ⑪ **🔇 (Mute)**
Mute or restore volume.
- ⑫ **AUDIO**
Select an audio language or channel.
- ⑬ **Numeric buttons**
Enter values or letters (using SMS style entry).
- ⑭ **SUBTITLE**
Select subtitle language for video.
- ⑮ **Color buttons**
Select tasks or options for Blu-ray discs.

- ⑰ **REPEAT**
 - Select or turn off repeat mode.
 - In radio mode, set a radio station.
- ⑱ **🔊 SOUND SETTINGS**
Access or exit sound options.
- ⑲ **🔊 +/- (Volume)**
Increase or decrease volume.
- ⑲ **■ (Stop)**
 - Stop play.
 - Press and hold for three seconds to open or close the disc compartment, or eject the disc.
- ⑳ **⏮ BACK**
 - Return to a previous menu screen.
 - In radio mode, press and hold to erase the current preset radio stations.
- ㉑ **Source buttons**
 - **DISC / POP-UP MENU**: Access or exit the disc menu when you play a disc.
 - **RADIO**: Switch to FM radio.
 - **AUDIO SOURCE**: Select an audio input source.

EasyLink controls

With Easylink, you can control your home theater and the TV with the following buttons on your home theater remote control (see 'EasyLink' on page 23).

- **⏻ (Standby-On)**: Press and hold to switch your home theater, TV and the connected devices to standby.
- **▶ (Play)**: When a video disc is in the disc compartment, wake up the TV from standby, and then play a disc.

5 Connect your home theater

theater

This section helps you connect your home theater to a TV and other devices.

For information about the basic connections of your home theater and accessories, see the quick start guide. For a comprehensive interactive guide, see www.connectivityguide.philips.com.

Note

- For identification and supply ratings, refer to the type plate at the back or bottom of the product.
- Before you make or change any connections, make sure that all devices are disconnected from the power outlet.

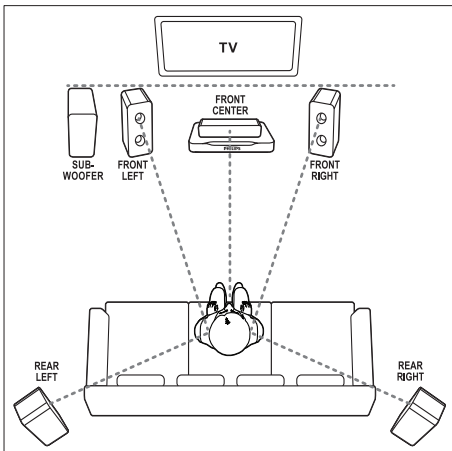
Speakers

Position, connect, and set up your speakers for best surround sound.

Position

Speaker position plays a critical role in setting up a surround sound effect.

For best results, place your speakers and the subwoofer as shown below.



Note

- Surround sound depends on factors such as room shape and size, type of wall and ceiling, windows and reflective surfaces, and speaker acoustics. Experiment with the speaker positions to find the optimum setting for you.

Follow these general guidelines, and then set up your speakers.

- 1 Seating position:**
This is the center of your listening area.
- 2 FRONT CENTER (front center) speaker:**
Place the center speaker directly in front of the seating position, either above or below your TV. Make sure that it is close to your ear height when you are seated.
- 3 FRONT LEFT (front left) and FRONT RIGHT (front right) speakers:**
Place the left and right speakers in the front, and equidistant from the center speaker in an arc, so that all the three speakers are at same distance from your seating position. For best effect, point the speakers towards the seating position and place the speakers close to the ear level (when seated).
- 4 REAR LEFT (rear left) and REAR RIGHT (rear right) speakers:**
Place the rear surround speakers to the left and right side of your seating position, either in line with it or slightly behind it. For best effect, point the speakers towards the seating position and place the speakers just above the ear level (when seated).
- 5 SUBWOOFER (subwoofer):**
Place the subwoofer at least one meter to the left or right of the TV. Leave about ten centimeter clearance from the wall.

Connect

Connect your speakers and the subwoofer to your home theater as described in the quick start guide.

Setup

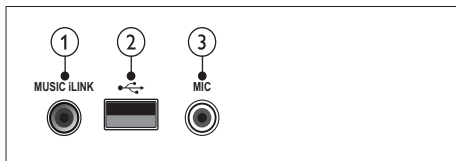
Set up your speakers through the speaker setup menu.

- 1 Connect your speakers and subwoofer as described in the Quick start guide.
- 2 Press **Home** on your home theater remote control, and select **[Setup] > [Audio] > [Speaker Setup]**.
- 3 Enter the distance for each speaker, and then listen to the test tones and change the volume. Experiment a little with the speaker positions to find the ideal setting.

Connectors

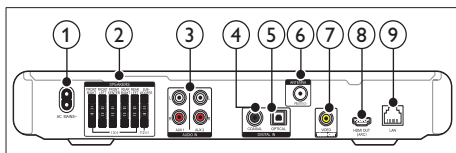
Connect other devices to your home theater.

Front



- 1 **MUSIC iLINK**
Audio input from an MP3 player.
- 2 **••••• (USB)**
Audio, video or picture input from a USB storage device.
- 3 **MIC**
Audio input from a microphone.

Back connectors



- 1 **AC MAINS~**
Connect to the power supply.
- 2 **SPEAKERS**
Connect to the supplied speakers and subwoofer.

- 3 **AUDIO IN (AUX 1 and AUX 2)**
Connect to an analog audio output on the TV or an analog device.
- 4 **DIGITAL IN-COAXIAL**
Connect to a coaxial audio output on the TV or a digital device.
- 5 **DIGITAL IN-OPTICAL**
Connect to an optical audio output on the TV or a digital device.
- 6 **ANTENNA FM 75 Ω**
Signal input from an antenna, cable or satellite.
- 7 **VIDEO OUT-VIDEO**
Connect to the composite video input on the TV.
- 8 **HDMI OUT (ARC)**
Connect to the HDMI input on the TV.
- 9 **LAN**
Connect to the LAN input on a broadband modem or router.

Side right



- 1 **MIC LEVEL**
Press to push out the microphone volume knob.

Connect to TV

Connect your home theater to a TV to watch videos. You can listen to audio from TV programs through your home theater speakers. Use the best quality connection available on your home theater and TV.

Option 1: Connect to TV through HDMI (ARC)

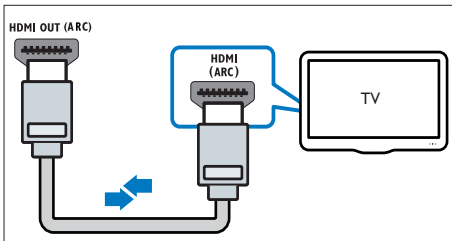
Best quality video

Your home theater supports HDMI version 1.4 - Audio Return Channel (ARC). If your TV is HDMI ARC compliant, connect your home theater to the TV through the HDMI ARC connection for easy and quick setup.

With HDMI ARC, you do not need an additional audio cable to play the audio from TV through your home theater.

- 1 Using a High Speed HDMI cable, connect the **HDMI OUT (ARC)** connector on your home theater to the **HDMI ARC** connector on the TV.

The **HDMI ARC** connector on the TV might be labeled **HDMI IN** or **HDMI**. For details on TV connectors, see the TV user manual.



- 2 On your TV, turn on HDMI-CEC. For details, see the TV user manual.
↳ When you play a disc on your home theater, the video is automatically displayed on TV and the audio is automatically played on the home theater.
- 3 If audio from the TV does not play automatically on your home theater, set up the audio manually (see 'Set up audio for connected devices' on page 14).

Option 2: Connect to TV through HDMI

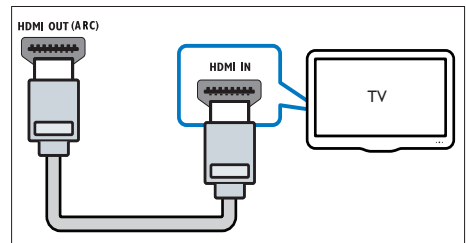
Best quality video

If your TV is not HDMI ARC compliant, connect your home theater to the TV through a standard HDMI connection.

With a standard HDMI connection, you need an additional audio cable to play the audio from the TV through your home theater (see 'Connect audio from TV and other devices' on page 13).

- 1 Using a High Speed HDMI cable, connect the **HDMI OUT (ARC)** connector on your home theater to the **HDMI** connector on the TV.

The HDMI connector on the TV might be labeled **HDMI IN**.



- 2 On your TV, turn on HDMI-CEC. For details, see the TV user manual.
↳ When you play a disc on your home theater, the video is automatically displayed on TV and the audio is automatically played on the home theater.
- 3 To play audio from TV programs through your home theater, connect an additional audio cable (see 'Connect audio from TV and other devices' on page 13).
- 4 If audio from the TV does not play automatically on your home theater, set up the audio manually (see 'Set up audio for connected devices' on page 14).

Note

- If your TV has a DVI connector, you can use an HDMI/DVI adapter to connect to TV.

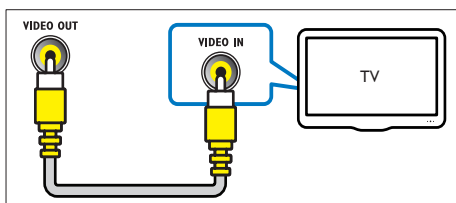
Option 3: Connect to the TV through composite video

Basic quality video

If your TV does not have HDMI connectors, connect your home theater to the TV through a composite connection. A composite connection does not support high-definition video.

With a composite connection, you need an additional audio cable to play the audio from the TV through your home theater (see 'Connect audio from TV and other devices' on page 13).

- Using a composite video cable, connect the **VIDEO** connector on your home theater to the composite video connector on the TV. The composite video connector might be labeled **AV IN**, **VIDEO IN**, **COMPOSITE**, or **BASEBAND**.



- On your TV, switch to the correct video input.
- To play audio from TV programs through your home theater, connect an additional audio cable (see 'Connect audio from TV and other devices' on page 13).

On your home theater, press **SOURCE** repeatedly to select the correct audio input.

Connect audio from TV and other devices

Play audio from TV or other devices through your home theater.

Use the best quality connection available on your TV, home theater, and other devices.

Note

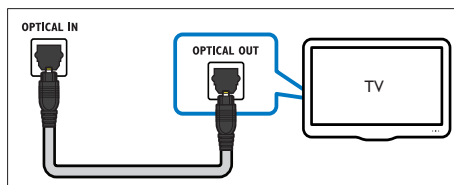
- The audio connections in this user manual are only recommendations. You can use other connections too.
- When your home theater and TV are connected through **HDMI ARC**, an audio connection is not required.

Option 1: Connect audio through a digital optical cable

Best quality audio

Using an optical cable, connect the **OPTICAL** connector on your home theater to the **OPTICAL OUT** connector on the TV or other device.

The digital optical connector might be labeled **SPDIF**, **SPDIF OUT**, or **OPTICAL**.

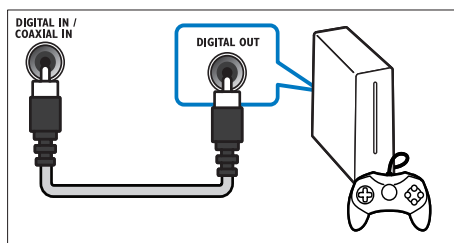


Option 2: Connect audio through a digital coaxial cable

Good quality audio

Using a coaxial cable, connect the **COAXIAL** connector on your home theater to the **COAXIAL/DIGITAL OUT** connector on the TV or other device.

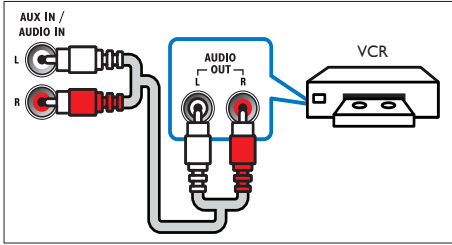
The digital coaxial connector might be labeled **DIGITAL AUDIO OUT**.



Option 3: Connect audio through analog audio cables

Basic quality audio

Using an analog cable, connect the **AUX** connectors on your home theater to the **AUDIO OUT** connectors on the TV or other device.



Set up audio for connected devices

When you connect a device to your home theater, check the audio settings.

- 1 On your TV and other devices, turn on HDMI-CEC. For details, see the user manual of the TV and the other device.
- 2 Select 'Amplifier' from the TV speakers menu. For details, see the TV user manual.
- 3 On your home theater, turn on System Audio Control, and then map the audio of the connected device to the correct connectors on your home theater (see 'Play audio from home theater' on page 23).

If the connected device is not HDMI-CEC compliant, press **SOURCE** repeatedly on your home theater to select the correct audio input.

Internet

Connect your home theater to the internet and enjoy:

- **YouTube videos:** Browse, search, and watch YouTube videos through the Internet (see 'YouTube videos' on page 22).
- **Picasa web albums:** Access, search, and view photos stored in your Picasa web albums through the Internet (see 'Picasa Web Albums' on page 22).
- **BD-Live applications:** Access exclusive services from the BD-Live enabled Blu-ray discs (see 'BD-Live on Blu-ray' on page 17).
- **Software update:** update the home theater software through the network (see 'Update software through the Internet' on page 27).

! Caution

- Before you try to connect the home theater to a computer network, familiarize yourself with the network router, media server software and networking principles. If necessary, read documentation that accompanies the network components. Philips is not responsible for lost, damaged, or corrupt data.

Wired connection

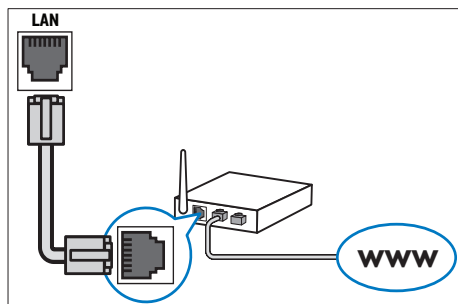
Connect your home theater to your router through a network cable.

What you need

- A network router (with DHCP enabled).
- A network cable (RJ45 straight cable).
- For BD-Live application and software update, make sure that the network router has access to the Internet and the firewall is disabled.

Set up the wired network

Connect your home theater to your router as shown below, and then switch on the devices.



- 1 Connect the home theater to a network router through a wired connection (see 'Wired connection' on page 14).
- 2 Turn on your TV, and switch to the correct source for the home theater.
- 3 Press **Home**.
- 4 Select **[Setup]**, and then press **OK**.
- 5 Select **[Network] > [Network Installation] > [Wired (Ethernet)]**, and then press **OK**.
- 6 Follow the instructions on the TV to complete the setup.
 - ↳ The home theater connects to the internet. If connection fails, select **[Retry]**, and then press **OK**.
- 7 Select **[Finish]**, and then press **OK** to exit.

Check wired network settings

- 1 Press **Home**.
- 2 Select **[Setup]**, and then press **OK**.
- 3 Select **[Network] > [View Network Settings]**, and then press **OK**.
 - ↳ The current network settings are displayed.

6 Use your home theater

This section helps you use the home theater to play media from a wide range of sources.

Before you start

- Make the necessary connections described in the Quick start guide and the user manual.
- Switch the TV to the correct source for the home theater.

Choose sound

This section helps you choose the ideal sound for your video or music.

- 1 Press **Sound Settings**.
- 2 Press **Navigation buttons** (left/ right) to access the sound options on the display.

Sound settings	Description
SOUND	Select a sound mode.
SURROUND	Select surround sound or stereo sound.
TREBLE	Change the high frequency output.
BASS	Change the low frequency output.
AUD SYNC	Delay the audio to match the video.
ECHO	Add echo to your music.

- 3 Select an option, and then press **OK**.
- 4 Press **BACK** to exit.
 - ↳ If you do not press a button within five seconds, the menu exits automatically.

Sound mode

Select predefined sound modes to suit your video or music.

- 1 Press **III SOUND SETTINGS**.
- 2 Select **SOUND**, and then press **OK**.
- 3 Press the **Navigation buttons** (up/down) to select a setting on the display:
 - **MOVIE**: Enjoy a truly cinematic audio experience, specially enhanced for movies.
 - **MUSIC**: Recreate the original recording environment of your music, in the studio or at a concert.
 - **ORIGINAL**: Experience the original sound of your movies and music, without added sound effects.
 - **NEWS**: Hear every word with optimized speech and clear vocals.
 - **GAMING**: Enjoy thrilling arcade sounds, ideal for action-packed video games or loud parties.
- 4 Press **OK** to confirm.

Surround sound mode

Experience an immersive audio experience with surround sound modes.

- 1 Press **III SOUND SETTINGS**.
- 2 Select **SURROUND**, and then press **OK**.
- 3 Press the **Navigation buttons** (up/down) to select a setting on the display:
 - **AUTO**: Surround sound based on the audio stream.
 - **MULTI-CH**: Immersive multi-channel sound for an enhanced movie experience.
 - **STEREO**: Two-channel stereo sound. Ideal for listening to music.
- 4 Press **OK** to confirm.

Equalizer

Change the high frequency (treble) and low frequency (bass) settings of the home theater.

- 1 Press **III SOUND SETTINGS**.
- 2 Select **TREBLE** or **BASS**, and then press **OK**.
- 3 Press the **Navigation buttons** (up/down) to change the frequency.
- 4 Press **OK** to confirm.

Discs

Your home theater can play DVDs, VCDs, CDs, and Blu-ray discs. It can also play discs that you've made at home, such as CD-R discs of photos and music.

What you need

For audio or 2D video:

- Audio and video connection between your home theater and the TV.
- An audio or a video disc.

Play discs

- 1 Insert a disc into the home theater.
↳ Your TV switches to the correct source and the disc plays automatically.
- 2 If the disc does not play automatically, press **DISC** or select **[play Disc]** in the home menu, and then press **OK**.
- 3 Press the play buttons to control play (see 'Play buttons' on page 16).

Play buttons

Button	Action
Navigation buttons	Navigate menus.
OK	Confirm an entry or selection.
▶ (Play)	Start or resume play.
II	Pause play.
■	Stop play.
◀ / ▶	Skip to the previous or next track, chapter or file.
◀◀ / ▶▶	Fast backwards or fast forwards. Press repeatedly to change the search speed.
Navigation buttons (up/down)	Rotate the picture clockwise or counter-clockwise.
SUBTITLE	Select subtitle language for video.
DISC/ POP-UP MENU	Access or exit the disc menu.
☰ (Options)	Access the advanced options when you play your audio, video, or media files (see 'Audio, video, and picture options' on page 19).

For video formats such as DivX:

- To stop play, press ■.
- To resume the video from where you stopped, press ► (Play).
- To play the video from the start, press OK.

Display menu for VCD and SVCD

Display the content menu on VCD and SVCD discs.

- 1 Press **▲** (Home).
- 2 Select **[Setup] > [Preference]**, and then press **OK**.
- 3 Select **[VCD PBC] > [On]**, and then press **OK**.

Note

- To skip the content menu, select **[Off]**.

Synchronize picture and sound

If the audio and video are not synchronized, delay the audio to match the video.

- 1 Press **≡ SOUND SETTINGS**.
- 2 Select **AUD SYNC**, and then press **OK**.
- 3 Press the **Navigation buttons** (up/down) to synchronize the audio with the video.
- 4 Press **OK** to confirm.

Bonus View on Blu-ray

On Blu-ray discs that support the Bonus View, enjoy extra content, such as a director's commentary, while you watch the main feature. Bonus View is also known as picture-in-picture.

- 1 Enable BonusView (or Picture-In-Picture) in the Blu-ray disc menu.
- 2 While you play the main feature, press **⏏ (Options)**.
 - ↳ The options menu is displayed.
- 3 Select **[PIP Selection] > [PIP]**, and then press **OK**.
 - ↳ Depending on the video, PIP option [1] or [2] is displayed.
 - ↳ The picture-in-picture video is displayed in a small window.

- 4 Select **[2nd Audio Language]** or **[2nd Subtitle Language]**, and then press **OK**.
- 5 Select the language, and then press **OK**.

Note

- To turn off the Bonus View, press **⏏ (Options)**, select **[PIP Selection] > [Off]**, and then press **OK**.

BD-Live on Blu-ray

On Blu-ray discs with BD-Live content, access additional features, such as internet chats with the director, latest movie trailers, games, wallpaper, and ringtones.

What you need

- a Blu-ray disc with BD-Live content
- an internet connection
- a USB storage device, with at least 1GB of memory

Note

- BD-Live services vary from country to country, and depend on the disc.
- When you use BD-Live, data on the disc and home theater are accessed by the content provider.

Access BD-Live with a USB storage device

- 1 Connect your home theater to the home network and internet (see 'Internet' on page 14).
- 2 Connect the USB storage device to the home theater.
 - The USB storage device is used to store the downloaded BD-Live content.
- 3 Select the BD-Live icon in the disc menu, and then press **OK**.
 - ↳ BD-Live starts to load. The loading time depends on the disc and your internet connection.
- 4 Press the **Navigation buttons** to navigate BD-Live, and then press **OK** to select an item.

Clear memory

If your storage device does not have enough memory for the BD-Live content, clear the memory on the storage device.

- 1 Press **⬆** (**Home**).
- 2 Select **[Setup]**, and then press **OK**.
- 3 Select **[Advanced]** > **[Clear memory]**, and then press **OK**.
 - ↳ This clears the local memory and deletes the BD-Live files that you downloaded on your storage device.

Disable BD-Live

To restrict access to BD-Live, turn on the BD-Live security.

- 1 Press **⬆** (**Home**).
- 2 Select **[Setup]**, and then press **OK**.
- 3 Select **[Advanced]** > **[BD-Live security]** > **[On]**, and then press **OK**.
 - ↳ BD-Live access is restricted.

Note

- You cannot restrict internet access on commercial Blu-ray discs.

USB storage devices

Enjoy pictures, audio and video on a USB storage device.

What you need

- A USB storage device that is formatted for FAT or NTFS file systems, and complies with the Mass Storage Class.
- A USB extension cable, if the USB storage device does not fit into the connector.

Note

- You can use digital cameras connected by USB if they can play the files without using a special computer program.
- To play DivX DRM - protected files from a USB storage device, connect your home theater to a TV through an HDMI cable.

Play files

- 1 Connect the USB storage device to the home theater.
- 2 Press **⬆** (**Home**).
 - ↳ The home menu is displayed.
- 3 Select **[browse USB]**, and then press **OK**.
 - ↳ A content browser is displayed.
- 4 Select a file, and then press **OK**.
- 5 Press the playback buttons to control play (see 'Play buttons' on page 16).

DivX

Play DivX videos from :

- a disc (see 'Discs' on page 16),
- a USB storage device (see 'USB storage devices' on page 18).

Note

- To play DivX DRM protected files from a disc or a USB storage device, connect your home theater to a TV through an HDMI cable.

VOD code for DivX

Before you purchase DivX videos and play them on your home theater, register the home theater on www.divx.com using the DivX VOD code.

- 1 Press **⬆** (**Home**).
- 2 Select **[Setup]**, and then press **OK**.
- 3 Select **[Advanced]** > **[DivX® VOD Code]**, and then press **OK**.
 - ↳ The DivX VOD registration code for your home theater is displayed.

Subtitles

If your video has subtitles in multiple languages, select a subtitle language.

- 1 While playing video, press **SUBTITLE** to select a language.



Note

- Make sure that the subtitle file has the same name as the video file. For example, if the video file is named 'movie.avi', save the subtitle file as 'movie.srt' or 'movie.sub'.
- Your home theater can play subtitle files in the following formats: .srt, .sub, .txt, .ssa, .ass, smi, and .sami. These files do not appear in the file navigation menu.
- If the subtitles do not appear correctly, change the character set.

Subtitle character set

If the subtitles do not appear correctly, change the character set that supports the DivX subtitle.

- 1 Press **⏏** (**Options**).
↳ The options menu is displayed.
- 2 Press the **Navigation buttons** to select **[Character Set]**, and then press **OK**.
- 3 Select a character set.

Europe, India, and Russia

Character Set	Language
[Standard]	English, Albanian, Danish, Dutch, Finnish, French, Gaelic, German, Italian, Kurdish (Latin), Norwegian, Portuguese, Spanish, Swedish and Turkish
[Central Europe]	Albanian, Croat, Czech, Dutch, English, German, Hungarian, Irish, Polish, Romanian, Slovak, Slovene and Sorbian
[Cyrillic]	Bulgarian, Belorussian, English, Macedonian, Moldavian, Russian, Serbian and Ukrainian
[Greek]	Greek

Audio, video, and picture options

Use advanced features when you play audio, video, or media files from a disc or a USB storage device.

Audio options

While playing audio, repeat an audio track, a disc, or a folder.

- 1 Press **⏏** (**Options**) repeatedly to cycle through the following functions:
 - **RPT TRACK / RPT FILE** : Repeat the current track or file.
 - **RPT DISC / RPT FOLDER** : Repeat all the tracks on the disc or the folder.
 - **RPT RANDOM**: Play audio tracks in random order.
 - **RPT OFF**: Turn off the repeat mode.

Video options


While watching video, select options such as subtitles, audio language, time search, and picture settings. Depending on the video source, some options are not available.

- 1 Press **⏏** (**Options**).
↳ The video options menu appears.
- 2 Press the **Navigation buttons** and **OK** to select and adjust:
 - **[Audio Language]**: Select audio language for video.
 - **[Subtitle Language]**: Select subtitle language for video.
 - **[Info]**: Display information about what is playing.
 - **[Character Set]**: Select a character set that supports the DivX subtitle.
 - **[Time Search]**: Skip to a specific part of the video by entering the time of the scene.
 - **[2nd Audio Language]**: Select the second audio language for Blu-ray video.
 - **[2nd Subtitle Language]**: Select the second subtitle language for Blu-ray video.
 - **[Titles]**: Select a specific title.
 - **[Chapters]**: Select a specific chapter.
 - **[Angle List]**: Select a different camera angle.

- **[Menus]:** Display the disc menu.
- **[PIP Selection]:** Display Picture-in-Picture window when playing a Blu-ray disc that supports the Bonus View.
- **[Zoom]:** Zoom into a video scene or picture. Press the **Navigation buttons** (left/right) to select a zoom factor.
- **[Repeat]:** Repeat a chapter or title.
- **[Repeat A-B]:** Mark two points within a chapter or track to repeat play, or turn off the repeat mode.
- **[Picture Settings]:** Select a predefined color setting.

Picture options

While viewing a picture, zoom into the picture, rotate it, add animation to a slideshow, and change the picture settings.


- 1 Press  (**Options**).
↳ The pictures options menu appears.
- 2 Press the **Navigation buttons** and **OK** to select and adjust:
 - **[Rotate +90]:** Rotate the picture 90 degree clockwise.
 - **[Rotate -90]:** Rotate the picture 90 degree counter-clockwise.
 - **[Zoom]:** Zoom into a video scene or picture. Press the **Navigation buttons** (left/right) to select a zoom factor.
 - **[Info]:** Display picture information.
 - **[Duration per slide]:** Select the display speed for each picture in a slide show.
 - **[Slide Animation]:** Select animation for the slide show.
 - **[Picture Settings]:** Select a predefined color setting.
 - **[Repeat]:** Repeat a selected folder.


Slideshows

While playing audio, access fun features such as picture and musical slideshows.

Picture slideshows




View a slideshow of your pictures stored in your disc or a USB storage device.

- 1 Select a picture from a disc or USB storage device, and then press **▶ (Play)**.
- 2 Press  (**Options**).

- 3 Press **Navigation buttons** and **OK** to select the following settings:
 - **[Slide Animation]:** Select an animation for the slideshow.
 - **[Duration per slide]:** Select a display speed for each picture in a slideshow.
- 4 Press  to stop the slideshow.

Musical slideshows

Create a musical slideshow to play music and pictures at the same time.

- 1 Select a music track, and then press **OK**.
- 2 Press  **BACK**, and go to the picture folder.
- 3 Select a picture, and then press **▶ (Play)** to start the slideshow.
- 4 Press  to stop slideshow.
- 5 Press  again to stop music.

Radio

Listen to FM radio on your home theater, and store up to 40 radio stations.

What you need

- FM antenna.

Note

- AM and digital radio are not supported.
- If no stereo signal is detected, you are prompted to install the radio stations again.
- For the best reception, place the antenna away from the TV or other sources of radiation.

Tune stations

- 1 Connect the FM antenna as described in the Quick start guide.
- 2 Press **RADIO**.
 - ↳ If you have already installed the radio stations, the last channel that you listened to is played.
 - ↳ If you have not installed any radio stations, the message **AUTO INSTALL... PRESS PLAY** appears on the display panel. Press **▶ (Play)**.
- 3 Press the following buttons to listen or to change radio stations:

Button	Action
◀/▶	Select a preset radio station.
Navigation buttons (left/right)	Search for a radio station.
Navigation buttons (up/down)	Fine tune a radio frequency.
■	Press to stop the installation of radio stations.
REPEAT	Manual: Press once to access program mode, and press again to store the radio station. Automatic: Press and hold for three seconds to reinstall the radio stations.
RADIO	Toggle between the stereo and mono sounds.

Listen to radio

- 1 Press **RADIO**.
 - To listen to a preset station, press **◀** or **▶**.
 - To search for a radio station, and then listen, press **Navigation buttons** (left/right).
- 2 Press **+/- (Volume)** to change the volume.

Tuning grid

In some countries, you can toggle the FM tuning grid between 50 kHz and 100 kHz. Switching the tuning grid erases all preset radio stations.

- 1 Press **RADIO**.
- 2 Press **■**.
- 3 Press and hold **▶ (Play)** to toggle between 50 kHz or 100 kHz.

MP3 player

Connect your MP3 player to play your audio files or music.

What you need

- An MP3 player.
- A 3.5mm stereo audio cable.

Play music

- 1 Connect the MP3 player to the home theater as described in the Quick start guide.
- 2 Press **AUDIO SOURCE** repeatedly until 'MUSIC I-LINK' appears on the display panel.
- 3 Press the buttons on the MP3 player to select and play audio files or music.

Karaoke

Play a Karaoke disc on your home theater and sing along with the music.

What you need

- A Karaoke microphone.
- Karaoke discs.

Note

- To prevent loud feedback or unexpected noise, turn the microphone volume to the minimum before you connect the microphone to your home theater.

Play karaoke music

- 1 Connect a karaoke microphone to the **MIC** connector on your home theater.
- 2 Switch your TV to the correct source for your home theater.
- 3 Play a karaoke disc and sing through the microphone.
 - To adjust the echo level, press **🔊** (**Sound options**), select **[Echo]**, and then press **OK**.
 - To adjust the microphone volume, press **MIC LEVEL**, and then turn the volume knob.
 - To adjust the level of the audio source, press **◀ +/- (Volume)**.

YouTube videos

Browse, search, and watch YouTube videos through your home theater.

- 1 Connect your home theater to the Internet (see 'Internet' on page 14).
- 2 Press **▲ (Home)**.
- 3 Select the YouTube icon, and then press **OK**.
↳ The default YouTube Leanback page is displayed.
- 4 To navigate the YouTube Leanback menu and select options, press the **Navigation buttons**, and then press **OK**.
- 5 To exit YouTube and return to the home menu, press **▲ (Home)**.

Note

- If you don't press any button for few seconds, the onscreen buttons and menu disappear.

Play and search buttons

Button	Action
Navigation buttons (up)	Display the onscreen keyboard. Use the onscreen keyboard to search for a video.
Navigation buttons (down)	Display the onscreen play buttons.
Navigation buttons (left/right)	While browsing the video playlist, select the previous or next video. Select the onscreen play buttons to play the video.
OK	Confirm an entry or selection.
▶ (Play)	Start or resume play.
 	Pause play.
■	Stop play.
◀ / ▶	Skip to the previous or next video.
◀◀ / ▶▶	Skip backwards or forwards while playing video.

Picasa Web Albums

Access, search, and view photos stored in your Picasa Web Albums through your home theater.

What you need

- An account with Picasa Web Albums.
 - A wired or wireless home network (depending on the network capability of your home theater).
- 1 Connect your home theater to the Internet.
 - 2 Press **▲ (Home)**.
 - 3 Select the Picasa icon, and then press **OK**.
↳ The default Picasa menu is displayed.
 - 4 Log in to the Picasa Web Albums using your Picasa web account.
 - The first time you log in, select New User+, and then enter your username and password. Save your login data for easy access later.
 - If you have logged in before, select a stored username and enter the password.
 - Press the alphanumeric keys on the remote control to enter your username and password.

- 5 Press the **Navigation buttons** to select one of the following, and then press **OK**.
 - My Photos: Display thumbnails of the photos saved in your Picasa Web Albums.
 - Featured: Display thumbnails of featured photos from Picasa website.
 - Friends: Display the list of friends.
 - Search: Search photos based on keywords.
 - Favorites: Display the favorite albums from your Picasa Web Albums.
 - Tag: Display the photos that are tagged in the Picasa Web Albums.
- 6 Press **▲ (Home)** to exit Picasa menu.

View albums and slideshows

- 1 Press the **Navigation buttons** to select My Photos from the Picasa menu, and then press **OK**.
↳ The photo albums in your Picasa Web Albums are displayed.
- 2 Press the **Navigation buttons** to select a photo, and then press **OK** to view the photo in full screen.

- 3 Press **OK** again to view the photos in a slideshow.
- 4 While viewing a slideshow, press **≡** **OPTIONS** and **Navigation buttons** to select one of the following, and then press **OK**:
 - Current playing: Display the index of the current photo.
 - Slideshow pause/ play: Select to pause or play a slideshow.
 - Rotate: Select to rotate the current photo.
 - Zoom: Select to zoom in or zoom out the photo.
 - Effect: Select a slideshow effect.
 - Speed: Select a slideshow speed.
 - Friends: Add the owner of the current photo to the friends list.
- 5 Press **↶** **BACK** to return to the previous screen.

EasyLink

The home theater supports Philips EasyLink, which uses the HDMI-CEC (Consumer Electronics Control) protocol. EasyLink-compliant devices that are connected through HDMI can be controlled by a single remote control.

Philips does not guarantee 100% interoperability with all HDMI-CEC devices.

What you need

- HDMI-CEC compliant devices.
- An HDMI connection between the connected devices.

Switch on

- 1 On the TV and other connected devices, turn on the HDMI-CEC operations. For details, see the manual of the TV or other devices.
- 2 Press **⬆** (**Home**).
- 3 Select **[Setup]**, and then press **OK**.
- 4 Select **[EasyLink] > [EasyLink]**, and then press **OK**.
- 5 Select **[On]**, and then press **OK**.

Control devices

Control the home theater and the other connected HDMI-CEC compliant devices with a single remote control.

One-touch play

If you enable One-touch play, the TV automatically switches to the correct channel when you play a disc in your home theater.

One-touch standby

When you press and hold **⏻** (**Standby**) on the remote control, the home theater and all the connected HDMI-CEC devices (that support one-touch standby) switch to the standby mode. If one-touch standby is enabled on your home theater, you can switch to standby with the remote control of the TV or other HDMI-CEC devices.

System Audio Control

When you play a device that has its audio output routed to the home theater, the home theater switches to the corresponding audio source automatically.

To use one-touch audio, turn on System Audio Control and follow the instructions on the TV to map connected devices to the audio input connectors of the home theater.

Audio Input Mapping

When you connect a new device to your home theater, map the device to the audio input connector (see 'Play audio from home theater' on page 23).

Play audio from home theater

Play the audio from a connected device through your home theater.

- 1 Press **⬆** (**Home**).
- 2 Select **[Setup]**, and then press **OK**.
- 3 Select **[EasyLink] > [System Audio Control] > [On]**, and then press **OK**.
 - To play the audio from the TV speakers, select **[Off]**, and skip the following steps.
- 4 Select **[EasyLink] > [Audio Input Mapping]**, and then press **OK**.
- 5 Follow the instructions on the TV to map the audio of the connected device to the audio inputs on your home theater.



Note

- If you connect your home theater to the TV through an HDMI ARC connection, make sure that the TV audio is mapped to the ARC input on your home theater.



7 Change settings

This section helps you to change the settings of your home theater.

Caution

- Most of the settings are already configured with the best value for your home theater. Unless you have a reason to change a setting, it is best to leave it at the default value.

Note

- You cannot change a setting that is grayed out.
- To return to the previous menu, press  **BACK**. To exit the menu, press  **(Home)**.


Picture

Change the picture settings to suit your preferences.

Note

- The best setting is automatically selected for the TV. If you change the setting, make sure that the TV supports the new settings.


Picture settings and format

- 1 Press  **(Home)**.
- 2 Select **[Setup]**, and then press **OK**.
- 3 Select **[Video]**, and then press **OK**.
- 4 Change the following settings, and then press **OK**:
 - **[TV Display]**: Picture format.
 - **[Picture Settings]**: Predefined color settings.

Picture color


Deep Color recreates the natural world on your TV screen and displays vivid images in over a billion of colors.

If your TV supports Deep Color and is connected to your home theater through an HDMI cable, you can change the Deep Color.

- 1 Press  **(Home)**.
- 2 Select **[Setup]**, and then press **OK**.
- 3 Select **[Video]** > **[HDMI Deep Color]**, and then press **OK**.
- 4 Select the following options, and then press **OK**:
 - **[Auto]**: Automatically select HDMI Deep Color.
 - **[On]**: View vivid images.
 - **[Off]**: Display standard 8-bit color.

Picture resolution

For HDMI video settings, connect your home theater to the TV through an HDMI cable.


- 1 Press  **(Home)**.
- 2 Select **[Setup]**, and then press **OK**.
- 3 Select **[Video]** > **[HDMI Video]**, and then press **OK**.
- 4 Change the HDMI resolution setting, and then press **OK**.

Sound

Change the sound settings to suit your preference.

HDMI audio

To hear an HDMI audio output from your TV, connect your home theater to the TV through an HDMI cable.

- 1 Press  **(Home)**.
- 2 Select **[Setup]**, and then press **OK**.
- 3 Select **[Audio]** > **[HDMI Audio]**, and then press **OK**.
- 4 Select the following options, and then press **OK**:
 - **[Bitstream]**: Enable bitstream output over HDMI.
 - **[Auto]**: Automatically select the best supported audio format.
 - **[Off]**: Disable audio from the TV.

Night mode

For quiet listening, decrease the volume of loud sounds when you play discs. Night mode is only available for Dolby-encoded DVD and Blu-ray discs.

- 1 Press **▲** (Home).
- 2 Select **[Setup]**, and then press **OK**.
- 3 Select **[Audio]** > **[Night Mode]** > **[On]**, and then press **OK**.

Language

Select a language for the home menu, audio, and subtitles.

Home menu

- 1 Press **▲** (Home).
- 2 Select **[Setup]**, and then press **OK**.
- 3 Select **[Preference]** > **[Menu language]**, and then press **OK**.
- 4 Select a menu language, and then press **OK**.

Disc audio

- 1 Press **▲** (Home).
- 2 Select **[Setup]**, and then press **OK**.
- 3 Select **[Preference]** > **[Audio]**, and then press **OK**.
- 4 Select an audio language for discs, and then press **OK**.

Note

- If your preferred disc language is not available, select **[Others]** from the list, and enter the 4-digit language code found at the end of this user manual.
- If you select a language that is not available on a disc, the home theater uses the default language of the disc.

Disc subtitle

- 1 Press **▲** (Home).
- 2 Select **[Setup]**, and then press **OK**.
- 3 Select **[Preference]** > **[Subtitle]**, and then press **OK**.
- 4 Select a subtitle language for discs, and then press **OK**.

Disc menu

- 1 Press **▲** (Home).
- 2 Select **[Setup]**, and then press **OK**.
- 3 Select **[Preference]** > **[Disc Menu]**, and then press **OK**.
- 4 Select a menu language for discs, and then press **OK**.

Note

- If your preferred disc language is not available, select **[Other]** from the list, and enter the 4-digit language code found at the end of this user manual.
- If you select a language that is not available on a disc, the home theater uses the default language of the disc.

Parental control

Restrict access to discs that are recorded with ratings.

Password

You can set or change your password to play a restricted disc.

- 1 Press **▲** (Home).
- 2 Select **[Setup]**, and then press **OK**.
- 3 Select **[Preference]** > **[Change Password]**, and then press **OK**.
↳ A change password menu is displayed.
- 4 Follow the instructions on the TV to set or change password.
 - If you do not have a password or you have forgotten, enter **0000**.
- 5 Press **OK**.

Ratings

Some discs are recorded with ratings according to age. You can set up your home theater to play only discs with an age rating lower than your child's age.

- 1 Press **▲** (Home).
 - 2 Select **[Setup]**, and then press **OK**.
 - 3 Select **[Preference] > [Parental Control]**, and then press **OK**.
 - ↳ A message prompts you to enter the password.
 - 4 Enter the password with the **Numeric buttons**.
 - 5 Select an age rating, and then press **OK**.
 - To play all discs irrespective of the rating, select level **8** or **[Off]**.
-

Energy saving

Save energy by changing the following settings.

Auto standby

When playing a disc or a USB storage device, automatically switch your home theater to standby if:

- it is in pause or stop mode, and
 - no button is pressed for 30 minutes.
- 1 Press **▲** (Home).
 - 2 Select **[Setup]**, and then press **OK**.
 - 3 Select **[Preference] > [Auto Standby] > [On]**, and then press **OK**.
-

Sleep timer

Set timers to switch the home theater to standby after a specified time.

- 1 Press **▲** (Home).
- 2 Select **[Setup]**, and then press **OK**.
- 3 Select **[Preference] > [Sleep Timer]**, and then press **OK**.
- 4 Select the duration of the sleep timer.
 - ↳ The sleep timer can be set up to 60 minutes. If the sleep timer is set to **[Off]**, it switches off.
- 5 Press **OK** to activate.
 - ↳ The home theater switches to standby after the specified time.

Screen saver

Automatically switch your home theater to screen saver mode if:

- it is in pause or stop mode, and
 - no button is pressed for 10 minutes.
- 1 Press **▲** (Home).
 - 2 Select **[Setup]**, and then press **OK**.
 - 3 Select **[Preference] > [Screen Saver] > [On]**, and then press **OK**.
-

Display panel

Change the brightness of the home theater display panel.

- 1 Press **▲** (Home).
 - 2 Select **[Setup]**, and then press **OK**.
 - 3 Select **[Preference] > [Display Panel]**, and then press **OK**.
 - 4 Select the brightness, and then press **OK**.
-

Apply factory settings

Reset your home theater to the default settings. You cannot reset the parental control settings.

- 1 Press **▲** (Home).
- 2 Select **[Setup]**, and then press **OK**.
- 3 Select **[Advanced] > [Restore default settings]**, and then press **OK**.
- 4 Select **[OK]**, and then press **OK**.

8 Update software

To continue to get the best features and support for your home theater, update the software regularly. Compare the version of your current software with the latest version on www.philips.com/support.

Check software version

- 1 Press **▲** (Home).
- 2 Select **[Setup]**, and then press **OK**.
- 3 Select **[Advanced]** > **[Version Info.]**, and then press **OK**.
 - ↳ The software version is displayed.

Update software through the Internet

- 1 Connect your home theater to the network through a wired connection (see 'Set up the wired network' on page 15).
- 2 Press **▲** (Home).
- 3 Select **[Setup]**, and then press **OK**.
- 4 Select **[Advanced]** > **[Software Update]** > **[Network]**.
 - ↳ If an upgrade media is detected, you are prompted to start or cancel the update.
- 5 Follow the instruction on the TV to confirm the update.
 - ↳ When the software update is complete, the home theater automatically switches off and restarts. If it does not, disconnect the power cord for a few seconds and then reconnect it.

Note

- If the home theater cannot connect to the Philips server, press **▲** (Home).
- Select **[Setup]** > **[Network]** > **[Network Installation]** to set up the network.

Update software through USB

What you need

- A USB flash drive, with at least 75MB of memory. The USB flash drive must be FAT or NTFS formatted. Do not use a USB hard drive.
- A computer with Internet access.
- An archive utility that supports the ZIP file format (for example, WinZip® for Microsoft® Windows® or StuffIt® for Macintosh®).

Step 1: Download the latest software

- 1 Connect a USB flash drive to your computer.
- 2 In your web browser, go to www.philips.com/support.
- 3 At the Philips Support website, find your product and locate the **Software and drivers**.
 - ↳ The software update is available as a zip file.
- 4 Save the zip file in the root directory of your USB flash drive.
- 5 Use the archive utility to extract the software update file in the root directory of the USB flash drive.
 - ↳ The files are extracted under the **UPG_ALL** folder of your USB flash drive.
- 6 Disconnect the USB flash drive from your computer.

Step 2: Update the software

! Caution

- Before you connect the USB flash drive to your home theater, make sure that there is no disc in the disc compartment, and the disc compartment is closed.

- 1 Connect the USB flash drive to your home theater.
- 2 Switch your TV to the correct source for your home theater.
- 3 Press **▲** (Home), and then select **[Setup]**.
- 4 Select **[Advanced]** > **[Software Update]** > **[USB]**.
- 5 Follow the instructions on the TV to confirm the update.
 - ↳ When the software update is complete, the home theater automatically switches off and restarts. If it does not, disconnect the power cord for a few seconds, and then reconnect it.

☰ Note

- When the software update is in progress, do not turn off the power or remove the USB flash drive.

9 Product specifications

☰ Note

- Specifications and design are subject to change without notice.

Region codes

The type plate on the back or bottom of the home theater shows which regions it supports.

Country	DVD	BD
Europe, United Kingdom		
Asia Pacific, Taiwan, Korea		
Latin America		
Australia, New Zealand		
Russia, India		
China		

Media formats

- AVCHD, BD-RE, BD-Video, DVD-Video, DVD+R/+RW, DVD-R/-RW, DVD+R/-R DL, CD-R/CD-RW, Audio CD, Video CD/SVCD, Picture files, MP3-CD, WMA-CD, DivX (Ultra)-CD, USB storage device

File formats

- Audio: .aac, .mka, .mp3, .wma, .wav
- Video: .avi, .divx, .mp4, .mkv, .asf, .mpeg, .mpeg
- Picture: .jpg, .jpeg, .gif, .png

Audio formats

Your home theater supports the following audio files.

Extension	Container	Audio codec	Bit rate
.mp3	MP3	MP3	32 kbps ~ 320 kbps
.wma	ASF	WMA	64 kbps ~ 160 kbps
.aac	AAC	AAC, HE-AAC	192 kbps
.wav	WAV	PCM	1.4 Mbps
.m4a	MKV	AAC	192 kbps
.mka	MKA	PCM	27.648 Mbps
.mka	MKA	Dolby Digital	640 kbps
.mka	MKA	DTS core	1.54 Mbps
.mka	MKA	MPEG	912 kbps
.mka	MKA	MP3	32 kbps ~ 320 kbps
.mka	MKA	WMA	64 kbps ~ 160 kbps
.mka	MKA	AAC, HE-AAC	192 kbps

Video formats

If you have a high definition TV, your home theater allows you to play your video files with:

- Resolution: 1920 x 1080 pixels at
- Frame rate: 6 ~ 30 frames per second.

.avi files in AVI container

Audio codec	Video codec	Bit rate
PCM, Dolby Digital, DTS core, MP3, WMA	DivX 3.11, DivX 4.x, DivX 5.x, DivX 6.x	10 Mbps max
	MPEG 1, MPEG 2	20 Mbps (peak 40 Mbps)
	MPEG 4 ASP	10 Mbps max
	H.264/AVC HP@4.1/4.0; MP@3.2/3.1/3.0	20 Mbps (peak 40 Mbps)

.divx files in AVI container

Audio codec	Video codec	Bit rate
PCM, Dolby Digital, MP3, WMA	DivX 3.11, DivX 4.x, DivX 5.x, DivX 6.x	10 Mbps max
	MPEG 1, MPEG 2	20 Mbps (peak 40 Mbps)
	MPEG 4 ASP	10 Mbps max

.mp4 or .m4v files in MP4 container

Audio codec	Video codec	Bit rate
Dolby Digital, MPEG, MP3, AAC, HE-AAC	MPEG 1, MPEG 2	20 Mbps (peak 40 Mbps)
	MPEG 4 ASP	10 Mbps max
	H.264/AVC HP@4.1/4.0; MP@3.2/3.1/3.0	20 Mbps (peak 40 Mbps)

.mkv files in MKV container

Audio codec	Video codec	Bit rate
PCM, Dolby Digital, DTS core, MPEG, MP3, WMA, AAC, HE-AAC	MPEG 1, MPEG 2	20 Mbps (peak 40 Mbps)
	MPEG 4 ASP	10 Mbps max
	H.264/AVC HP@4.1/4.0; MP@3.2/3.1/3.0	20 Mbps (peak 40 Mbps)

.mpg and .mpeg files in PS container

Audio codec	Video codec	Bit rate
PCM, DTS core, MPEG, MP3	MPEG 1, MPEG 2	20 Mbps (peak 40 Mbps)
	MPEG 1, MPEG 2	20 Mbps (peak 40 Mbps)

Amplifier

- Total output power: 300W RMS (30% THD)
- Frequency response: 20 Hz-20 kHz / ± 3 dB
- Signal-to-noise ratio: > 65 dB (CCIR) / (A-weighted)
- Input sensitivity:
 - AUX1, AUX2: 1000 mV
 - Music i.Link: 500 mV

Video

- Signal system: PAL / NTSC
- HDMI output: 480i/576i, 480p/576p, 720p, 1080i, 1080p, 1080p24

Audio

- Sampling frequency:
 - MP3: 32 kHz, 44.1 kHz, 48 kHz
 - WMA: 44.1 kHz, 48 kHz
- Constant bit rate:
 - MP3: 32 kbps - 320 kbps
 - WMA: 48 kbps - 192 kbps

Radio

- Tuning range:
 - Europe/China: FM 87.5-108 MHz (50 kHz)
 - Asia Pacific/Russia/Latin America: FM 87.5-108 MHz (50/100 kHz)
- Signal-to-noise ratio: FM 50 dB
- Frequency response: FM 180 Hz-12.5 kHz / ± 3 dB

USB

- Compatibility: Hi-Speed USB (2.0)
- Class support: USB Mass Storage Class (MSC)
- File system: FAT16, FAT32, NTFS
- Maximum memory support: < 160 GB

Main unit

- Power supply: 110-240 V~, 50-60 Hz
- Power consumption: 55 W
- Standby power consumption: ≤ 0.9 W
- Dimensions (WxHxD): 360 x 58 x 325 mm
- Weight: 2.7 kg

Subwoofer

- Output power: 50W RMS (30% THD)
- Impedance: 12 ohm
- Speaker drivers: 165 mm (6.5") woofer
- Frequency response: 20 Hz-150 Hz
- Dimensions (WxHxD): 123 x 309 x 369 (mm)
- Weight: 3.2 kg
- Cable length: 3 m

Speakers

- Center speaker:
 - Output power: 50W RMS (30% THD)
 - System: full range satellite
 - Speaker impedance: 3 ohm
 - Speaker drivers: 76.2 mm (3") full range
 - Frequency response: 150 Hz-20 kHz
 - Dimensions (WxHxD): 161 x 95 x 92 mm
 - Weight: 0.4 ~ 0.5 kg
 - Cable length: 2 m
- Front/rear speakers:
 - Output power: 4 x 50W RMS (30% THD)
 - Speaker impedance: 3ohm
 - Speaker drivers: 76.2 mm (3") full range
 - Frequency response: 150 Hz-20 kHz
 - Dimensions (WxHxD): 95 x 161 x 87 mm
 - Weight: 0.4 ~ 0.5 kg/ each
 - Cable length (front speakers): 4 m
 - Cable length (rear speakers): 10 m

Remote control batteries

- 2 x AAA-R03-1.5 V

Laser

- Laser Type (Diode): InGaN/AlGaIn (BD), AlGaInP (DVD/CD)
- Wave length: 405 +7 nm/-7 nm (BD), 655 +10 nm/-10 nm (DVD), 790 +10 nm/-20 nm (CD)
- Output power (Max. ratings): 20 mW (BD), 6 mW (DVD), 7 mW (CD)

10 Troubleshooting



Warning

- Risk of electric shock. Never remove the casing of the product.

To keep the warranty valid, never try to repair the product yourself.

If you have problems using this product, check the following points before you request service. If you still have a problem, register your product and get support at www.philips.com/welcome.

Main unit

The buttons on the home theater do not work.

- Disconnect the home theater from the power supply for a few minutes, then reconnect.

Picture

No picture.

- Make sure that the TV is switched to the correct source for the home theater.

No picture on a TV connected through HDMI.

- Make sure that you use a High Speed HDMI cable to connect the home theater and TV. Some Standard HDMI cables do not display properly for some images, 3D video, or Deep Color.
- Make sure that the HDMI cable is not faulty. If it is faulty, replace it with a new cable.
- Press **Home** and then **731** on the remote control to restore the default picture resolution.
- Change the HDMI video setting, or wait for 10 seconds for auto recovery (see 'Picture resolution' on page 24).

Disc does not play high-definition video.

- Make sure that the disc contains high-definition video.
- Make sure that the TV supports high-definition video.
- Use an HDMI cable to connect to the TV.

Sound

No sound from home theater speakers.

- Connect the audio cable from your home theater to your TV or other devices. You do not need a separate audio connection when:
 - the home theater and TV are connected through an **HDMI ARC** connection, or
 - a device is connected to the **HDMI IN** connector on your home theater.
- Set up the audio for the connected device (see 'Set up audio for connected devices' on page 14).
- Reset your home theater to its factory settings (see 'Apply factory settings' on page 26), and then switch it off and switch on again.
- On your home theater, press **SOURCE** repeatedly to select the correct audio input.

Distorted sound or echo.

- If you play audio from the TV through the home theater, make sure that the TV is muted.

Audio and video are not synchronized.

- 1) Press **III SOUND SETTINGS**. 2) Press the **Navigation buttons** (left/right) to select **AUD SYNC**, and then press **OK**. 3) Press the **Navigation buttons** (up/down) to synchronize the audio with the video.

Play

Cannot play a disc.

- Clean the disc.
- Make sure that the home theater supports the type of disc (see 'Media formats' on page 28).
- Make sure that the home theater supports the region code of the disc (see 'Region codes' on page 28).
- If the disc is a DVD±RW or DVD±R disc, make sure that it is finalized.

Cannot play a DivX file.

- Make sure that the DivX file is encoded according to the 'Home Theater Profile' with the DivX encoder.
- Make sure that the DivX file is complete.

DivX subtitles do not display correctly.

- Make sure that the subtitle file name is the same as the movie file name (see 'Subtitles' on page 19).
- Select the correct character set: 1) Press **Options**. 2) Select **[Character Set]**. 3) Select the supported character set. 4) Press **OK**.

Cannot read the contents of a USB storage device.

- Make sure that the format of the USB storage device is compatible with the home theater.
- Make sure that the file system on the USB storage device is supported by the home theater.

'No entry' or 'x' sign appears on the TV.

- The operation is not possible.

EasyLink does not work.

- Make sure that the home theater is connected to a Philips brand EasyLink TV, and the EasyLink option is on (see 'EasyLink' on page 23).

When you switch on the TV, the home theater automatically switches on.

- This behavior is normal when you are using Philips EasyLink (HDMI-CEC). To make the home theater work independently, switch off EasyLink.

Cannot access BD-Live features.

- Make sure that the home theater is connected to the network (see 'Set up the wired network' on page 15).
- Make sure that the network is set up (see 'Set up the wired network' on page 15).
- Make sure that the Blu-ray disc supports BD-Live features.
- Clear memory storage (see 'Clear memory' on page 18).

TV screen is black when you play a Blu-ray 3D video or a DivX copy protected video.

- Make sure that the home theater is connected to the TV through an HDMI cable.
- Switch to the correct HDMI source on the TV.

11 Index

A

advanced

BD-Live security	18
restore default settings	26
software update	27
software version	27

amplifier

audio

formats	29
HDMI audio	24
input mapping	23
language	25
night mode	25
options	19
predefined modes	16
quality	13
settings	24
source	14
speaker setup	11
specifications	30

audio formats

	29
--	----

audio input mapping	23
---------------------	----

audio language	25
----------------	----

audio options	19
---------------	----

auto standby	26
--------------	----

B

bass	16
------	----

BD-Live

BD-Live (USB)	17
clear memory	18
disable	18
troubleshooting	31

Blu-ray	16
---------	----

Bonus View	17
------------	----

brightness	26
------------	----

browse

disc	16
USB storage device	18

C

care

environment	7
product	7

character set	19
---------------	----

close disc compartment	8
------------------------	---

compliance	4
------------	---

computer

connect to	14
karaoke	21

connect			
audio (analog cable)	14	one-touch play	23
audio (coaxial cable - digital)	13	one-touch standby	23
audio (optical cable - digital)	13	system audio control	23
audio from TV and other devices	13	eject disc	8
home network	14	enable	
speakers	10	auto standby	26
TV (Composite)	13	BD-Live	18
TV (HDMI ARC)	12	HDMI-CEC	23
TV (HDMI)	12	screen saver	26
connectors		energy	
back connectors	11	auto standby	26
front connectors	11	brightness	26
control		screen saver	26
disc play	16	sleep timer	26
Easylink (HDMI-CEC)	9		
main unit	8	<hr/>	
parental control	25	F	
radio	20	factory settings	26
USB storage device	16	FAQs	4
copyright protection	4	FM antenna	11
		FM antenna	11
		front connectors	11
<hr/>		<hr/>	
D		H	
disable		HDMI	
BD-Live	18	audio	24
HDMI-CEC	23	Deep color	24
discs		TV (HDMI ARC)	12
audio	19	video	24
audio language	25	HDMI-CEC	23
BD-Live	17		
Bonus View	17	<hr/>	
control buttons	16	I	
DivX	18	Internet	
eject disc	8	BD-Live	17
menu language	25	connect to	14
options	19	Picasa web albums	22
picture	20	update home theater software	27
picture-in-picture	17	YouTube videos	22
subtitle	25		
synchronize picture and sound	17	<hr/>	
time search	19	L	
titles	19	language	
display panel	8	2nd audio language	17
DivX		2nd subtitle language	17
character set	19	audio	25
subtitles	19	disc menu	25
VOD code	18	onscreen menu	25
		subtitle	25
		legal notices	4
<hr/>			
E			
EasyLink (HDMI-CEC)			
audio input mapping	23		
control buttons	9		

<hr/>	
M	
main unit	
overview	8
specifications	30
troubleshooting	31
manually setup speakers	11
media formats	28
microphone	11
MP3	
connector	11
play	21
multimedia content	
from disc	16
from USB storage device	18
<hr/>	
N	
network	
home network	14
settings	14
update home theater software	27
wired connection	14
night mode	25
<hr/>	
O	
one-touch play	23
one-touch standby	23
open disc compartment	8
open source software	5
options	
audio	19
picture	20
video	19
overview	
connectors	11
HDMI-CEC	23
main unit	8
remote control	8
settings	24
speaker setup	11
<hr/>	
P	
parental control	
password	25
ratings	26
password	25
PC	
connect to	14
Philips Easylink	23
Picasa web albums	22
picture	
options	20
rotate	20
settings	24
slideshows	20
troubleshooting	31
zoom	20
picture options	20
picture-in-picture	
2nd audio language	17
2nd subtitle language	17
play	
discs	16
DivX	18
MP3	21
radio	30
slideshows	20
troubleshooting	31
USB	18
position	
connectors	11
position	10
power options	
auto standby	26
brightness	26
screen saver	26
sleep timer	26
preference	
audio	24
auto standby	26
change password	25
disc menu	25
display panel	26
menu language	25
parental control	25
screen saver	26
sleep timer	26
subtitle	25
product specifications	28
<hr/>	
R	
radio	
control buttons	20
FM antenna	11
listen to radio	21
specifications	30
tune stations	20
tuning grid	21
ratings	26
recycling	7
region codes	28
remote control	
batteries	30
overview	8
repeat	19

S		
safety		
disposal	7	
use of the product	6	
screen saver	26	
settings		
audio	24	
default	26	
disc language	25	
HDMI audio	24	
HDMI video	24	
HDMI-CEC	23	
menu language	25	
parental rating		
password	25	
ratings	26	
password	25	
picture	24	
power	26	
ratings	26	
resolution	24	
restore	26	
screen saver	26	
sleep timer	26	
subtitle language	25	
video	24	
setup speakers		
manually	11	
sleep timer	26	
slideshows		
animation	20	
duration	20	
musical	20	
picture	20	
software		
check current version	27	
update	27	
sound		
bass	16	
predefined sound mode	16	
surround sound	16	
synchronize picture and sound	17	
troubleshooting	31	
speaker setup		
predefined modes	16	
settings	24	
speakers		
5.1 speakers	10	
connect	10	
manual setup	11	
position	10	
setup	11	
specifications	30	
surround sound	16	
specifications	28	
standby	26	
subtitle		
character set	19	
language	25	
subwoofer		
specifications	30	
synchronize picture and sound	17	
system audio control	23	
T		
time search	19	
titles	19	
trademarks	5	
troubleshooting		
connection	31	
main unit	31	
picture	31	
play	31	
serial number	4	
sound	31	
tuning grid	21	
U		
update software		
check current version	27	
from a USB storage device	27	
from network	27	
USB		
format	30	
USB storage device		
options	19	
play	18	
specifications	30	
update home theater software	27	
V		
video		
HDMI deep color	24	
picture resolution	24	
picture settings	24	
synchronize picture and sound	17	
VOD code for DivX	18	
video formats	30	
video options	19	
VOD code for DivX	18	

W

wired network

settings	15
wired connection	14

Y

YouTube videos	22
----------------	----

Validez de la garantía

Todos los productos de la línea de audio y video Philips, se regirán por un año de garantía internacional (365 días), salvo para Chile donde los productos de las líneas CD Portable y RCR CD, los cuales se rigen por 6 meses de garantía (182 días)

Condiciones de la garantía

Esta garantía perderá su validez si:

- El defecto es causado por uso incorrecto o en desacuerdo con el manual de instrucciones
- El aparato sea modificado, violado por una persona no autorizada por Philips
- El producto esté funcionando con un suministro de energía (red eléctrica, batería, etc.) de características diferentes a las recomendadas en el manual de instrucciones
- El número de serie que identifica el producto se encuentre de forma adulterada.

Están excluidos de garantía,

- Los defectos que se generen debido al incumplimiento del manual de instrucciones del producto
- Los casos fortuitos o de la fuerza mayor, como aquellos causados por agentes de la naturaleza y accidentes, descargas eléctricas, señales de transmisión débiles.
- Los defectos que se generen debido al uso de los productos en servicios no doméstico/residencial regulares o en desacuerdo con el uso recomendado
- Daños ocasionados por fluctuaciones de voltajes, voltaje fuera de norma o por causas fuera de Philips, como cortocircuitos en los bafles o parlantes.
- En las ciudades en donde no existe el taller autorizado del servicio de Philips, los costos del transporte del aparato y/o el técnico autorizado, corren por cuenta del cliente.
- La garantía no será válida si el producto necesita modificaciones o adaptaciones para que funcione en otro país que no es aquél para el cual fue mercadeado.

El único documento válido para hacer efectiva la garantía de los productos, es la Factura o Boleta de compra del consumidor final.

Aquellos productos que hayan sido adquiridos en otros países y que no estén en el rango normal del país donde se efectuará la reparación, dicha prestación de servicio tomará mas tiempo de lo normal ya que es necesario pedir las partes/piezas al centro de producción correspondiente.

Centros de información

Líneas de atención al consumidor

Bolivia: 800 100 664

<http://www.philips.com/>

Chile: 600 7445477

www.philips.cl

Colombia: 01 800 700 7445

www.philips.com.co

Costa Rica: 0800 507 7445

www.centralamerica.philips.com

Ecuador: 1-800-10-1045

www.centralamerica.philips.com

El Salvador: 800 6024

www.centralamerica.philips.com

Guatemala: 1 800 299 0007

www.centralamerica.philips.com

Honduras

www.centralamerica.philips.com

México: 01 800 504 6200

www.philips.com.mx

Nicaragua

www.centralamerica.philips.com

Panamá: 800 8300

www.centralamerica.philips.com

Perú: 0800-00100

www.philips.com.pe

República Dominicana: 1 800 751 2673

www.centralamerica.philips.com

Venezuela: 0800 100 4888

www.philips.com.ve

LISTA DE SERVIÇO AUTORIZADO - BRASIL

ACRE					
CRUZEIROS DO SUL	68-33227216	ITUMBIARA	64-34310837	SAO JOAO DEL REI	32-33718306
RIO BRANCO	68-32217642	LUZIANIA	61-36228519	SAO SEBASTIAO DO PARAISO	35-35313094
		MINEIROS	64-36618259	SETE LAGOAS	31-37718570
ALAGOAS		PIRES DO RIO	64-34611133	TEOFILO OTONI	33-35225831
ARAPIRACA	82-35222367	RIALMA	62-33971320	TIMOTEO	31-38482728
MACEIO	82-32417237	RIO VERDE	64-36132034	TRES CORACOES	35-32324143
PALMEIRA DOS INDIOS	82-34213452	TRINDADE	62-35051505	UBA	32-35323626
UNIAO DOS PALMARES	82-32811305	URUAQU	62-33571285	UBERABA	34-33332520
				UBERLANDIA	34-32123636
		MARANHAO		VARGINHA	35-32228414
AMAPA		ACAILANDIA	99-35381889	VARZEA DA PALMA	38-37311548
MACAPA	96-32175934	BACABAL	99-36212794	VICOSA	31-36918000
		CAXIAS	99-35212377		
AMAZONAS		CODO	99-36612942	PARA	
MANAUS	92-36633366	SANTA INES	98-36537553	ALTAMIRA	91-35154349
MANAUS	92-32324252	IMPERATRIZ	99-35229006	ANANINDEUA	91-32354831
		PEDREIRAS	99-38423142	BELEM	91-32421090
BAHIA		PRESIDENTE DUTRA	99-38631815	BELEM	91-32542424
ALAGOINHAS	75-34211128	SAO JOSE DE RIBAMAR	98-32241581	CAPANEMA	91-34621100
BARREIRAS	77-36117592	SAO LUIS	98-32323236	CASTANHAL	91-37215052
CAETITE	77-34541183			MARABA	94-33224207
CAMACARI	71-36218288	MATO GROSSO		PARAGOMINAS	91-30110778
CRUZ DAS ALMAS	75-36212839	BARRA DO GARCAS	66-34011394	PARAUPEBAS	94-33561756
EUNAPOLIS	73-32815181	CUIABA	65-33176464	SANTAREM	93-35235322
FEIRA DE SANTANA	75-32232882	LUCCAS DO RIO VERDE	65-35491333	TUCURUI	55-33523215
GUANAMBI	77-34512791	PONTES E LACERDA	65-32662326		
ILHEUS	73-32315995	RONDONOPOLIS	66-34323888	PARAIBA	
IRECE	74-36410202	TANGARA DA SERRA	65-33261431	CAMPINA GRANDE	83-33212128
ITABUNA	73-36137777	VARZEA GRANDE	65-36826502	GUARABIRA	83-32711159
JACOBINA	74-36211323			JOAO PESSOA	83-32469689
JEQUIE	73-35254141	MATO GROSSO DO SUL		NOVA FLORESTA	83-33741014
JUAZEIRO	74-36116456	AMAMBAI	67-34811543	SAPE	83-32832479
LAURO DE FREITAS	71-33784021	CAMPO GRANDE	67-33831540		
MURITIBA	75-34241908	CAMPO GRANDE	67-33213898	PARANA	
PAULO AFONSO	75-32811349	DOURADOS	67-34217117	ARAPONGAS	43-32521606
RIBEIRA DO POMBAL	75-32761853	NOVA ANDRADINA	67-34413851	ASSIS CHATEAUBRIAND	44-35285181
SALVADOR	71-32473659			BANDEIRANTES	43-35421711
SALVADOR	71-32072070	MINAS GERAIS		CAMPO MOURAO	44-30164500
SALVADOR	71-33356233	ANDRADAS	35-37312970	CASCADEL	45-32254005
SENHOR DO BONFIM	74-35413143	ARAGUARI	34-32416026	CIANORTE	44-36292842
SERRINHA	75-32611794	ARAXA	34-36611132	CURITIBA	41-33334764
SANTO ANTONIO DE JESUS	75-36314470	ARAXA	34-36691869	CURITIBA	41-32648791
TEIXEIRA DE FREITAS	73-30111600	ARCOS	37-33513455	FOZ DO IGUAQU	45-35234115
		BAMBUI	37-34311473	FRANCISCO BELTRAO	46-35241501
CEARÁ		BELO HORIZONTE	31-32254066	IBIPORA	43-32581863
CRATEUS	88-36910019	BETIM	31-35322088	IRATI	42-34221337
FORTALEZA	85-40088555	BOM DESPACHO	37-35222511	LAPA	41-36222410
IGUATU	88-35810512	CARANGOLA	32-37412017	LONDRINA	43-33210077
ITAPIPOCA	88-36312030	CARATINGA	33-33213433	MANDAGUARI	44-32331335
JUAZEIRO DO NORTE	88-35871973	CASSIA	35-35412293	MARECHAL CANDIDO RONDON	45-32542605
SOBRAL	88-36110605	CATAGUASES	32-34227986	MARINGA	44-32264200
TAUA	88-34371987	CONGONHAS	31-37311638	MEDIANEIRA	45-32642580
TIANGUA	88-36713336	CONTAGEM	31-33912994	PARANAVAI	44-34234711
UBAJARA	88-36341233	CORONEL FABRICIANO	31-38411804	PARANAPANEMA	46-32242786
		CURVELO	38-37213009	PONTA GROSSA	42-30285061
DISTRITO FEDERAL		DIVINOPOLIS	37-32212353	RIO NEGRO	47-36450251
BRASILIA	61-35564840	FORMIGA	37-33214177	ROLANDIA	43-32561947
BRASILIA	61-33549615	GOVERNADOR VALADARES	33-32716650	SANTO ANTONIO PLATINA	43-35341809
BRASILIA	61-34451991	GUAXUPE	35-35514124	SAO MIGUEL DO IGUAQU	45-35651429
		IPATINGA	31-38222332	TOLEDO	45-32522471
ESPIRITO SANTO		ITABIRA	31-38316218	UMUARAMA	44-30561485
ALEGRE	28-35526349	ITAJUBA	35-36211315		
ARACRUZ	27-32561251	ITAPERICICA	37-33411326	PERNAMBUCO	
BAIXO GUANDU	27-37321142	ITALUNA	37-32412468	CABO SANTO AGOSTINHO	81-35211823
BARRA DE SAO FRANCISCO	27-37562245	JOAO MONLEVADE	31-38512909	CAMARAGIBE	81-34581246
CACHOEIRA DE ITAPEMIRIM	28-35223524	JOAO PINHEIRO	38-35611327	CARUARU	81-37220235
COLATINA	27-37222288	JUIZ DE FORA	32-32151514	GARANHUNS	87-37610085
GUARAPARI	27-33614355	LAGOA DA PRATA	37-32613493	PAULISTA	81-34331142
SAO MATEUS	27-37633806	LAVRAS	35-38210550	RECIFE	81-32313399
SERRA	27-33284292	MANHUAQU	33-33314735	RECIFE	81-34656042
VILA VELHA	27-32891233	MONTE CARMELO	34-38422082	RECIFE	81-32286123
VITORIA	27-32233899	MONTE SANTO DE MINAS	35-35911888	SERRA TALHADA	87-38311401
		MONTES CLAROS	38-32218925		
GOIÁS		MURIAE	32-37224334	PIAUI	
ANAPOLIS	62-33243562	NANUQUE	33-36212165	PARNAIBA	86-33222877
CALDAS NOVAS	64-34532878	NOVA LIMA	31-35412026	TERESINA	86-32230825
CATALAO	64-34412786	OLIVEIRA	37-33314444	TERESINA	86-32214618
FORMOSA	61-36318166	PARACATU	38-36711250		
GOIANESIA	62-33534967	PASSOS	35-35214342	RIO DE JANEIRO	
GOIANIA	62-32916770	PATOS DE MINAS	34-38222588	BARRA DO PIRAI	24-24437745
GOIANIA	62-32510933	PATROCINIO	34-38311531	BELFORD ROXO	21-27795797
GOIANIA	62-32292908	PIUMHI	37-33714632	BOM JESUS DO ITABOANA	22-38312216
GOIATUBA	64-34952401	POCOS DE CALDAS	35-37224448	CABO FRIO	22-26451819
INHUMAS	62-35111431	PONTE NOVA	31-38172486	CAMPOS DOS GOYTACAZES	22-27221499
ITAPURANGA	62-33551484	POUSO ALEGRE	35-34212120	CORDEIRO	22-25512099

LISTA DE SERVIÇO AUTORIZADO - BRASIL

DUQUE DE CAXIAS	21-27711508	CONCORDIA	49-34423704	SAO CAETANO DO SUL	11-42275339
ITAGUAI	21-26886491	CRUCILUMA	48-21015555	SAO CARLOS	16-33614913
ITACARA	22-38612740	CRUITIBANOS	49-32410851	SAO JOAO DA BOA VISTA	19-36232990
ITAPERUNA	22-38236825	FLORIANOPOLIS	48-32049700	SAO JOSE DO RIO PARDO	19-36085760
MACAE	22-27591358	GAROPABA	48-32544104	SAO JOSE DO RIO PRETO	17-32325680
MAGE	21-26333342	INDAIAL	47-33333275	SAO JOSE DOS CAMPOS	12-39239508
NITEROI	21-2622-0157	ITAJAI	47-33444777	SAO PAULO	11-29791184
NOVA FRIBURGO	22-25227692	JARAGUA DO SUL	47-33722005	SAO PAULO	11-38659897
PETROPOLIS	24-22454997	JOACABA	49-35220418	SAO PAULO	11-22722245
RESENDE	24-33550101	JOINVILLE	47-34331146	SAO PAULO	11-26940101
RIO DE JANEIRO	21-24264702	LAGES	49-32244414	SAO PAULO	11-32077111
RIO DE JANEIRO	21-25892030	LAGUNA	48-36443153	SAO PAULO	11-39757996
RIO DE JANEIRO	21-25099851	MARAVILHA	49-36640052	SAO PAULO	11-22976464
RIO DE JANEIRO	21-24315759	MINHAZZINHO	49-33661014	SAO PAULO	11-56879695
RIO DE JANEIRO	21-25714989	PORTO UNIAO	42-35232839	SAO PAULO	11-38751333
RIO DE JANEIRO	21-3381-0711	RIO DO SUL	47-35211920	SAO PAULO	11-38455755
SAO GONCALO	21-27013214	RIO NEGRINHO	47-36440979	SAO PAULO	11-22966122
TERESOPOLIS	21-27439467	SAO MIGUEL DO OESTE	49-36220026	SAO PAULO	11-20713907
TRES RIOS	24-22521388	TUBARAO	48-36261851	SAO PAULO	11-25770899
VELTA REDONDA	24-33481601	VIDEIRA	49-35660376	SAO PAULO	11-32223111
		XANXERE	49-34333028	SAO ROQUE	11-47125635
				SAO VICENTE	13-34646559
RIO GRANDE DO NORTE		SÃO PAULO		SOROCABA	15-32241170
CAICO	84-34171844	AGUAS DE LINDOIA	19-38241524	SUZANO	11-47598671
NATAL	84-32231249	AMERICANA	19-34062914	TABOAO DA SERRA	11-47871480
NATAL	84-32132345	AMPARO	19-38072674	TABOAO DA SERRA	11-47871480
PAU DOS FERROS	84-33512334	ARACATUBA	16-36218775	TABOAO DA SERRA	11-47871480
		ARARAUQUARA	16-33368710	TABOAO DA SERRA	11-47871480
RIO GRANDE DO SUL		ASSIS	18-33242649	TABOAO DA SERRA	11-47871480
BAGE	53-32411295	ATIBAIA	11-44118145	TABOAO DA SERRA	11-47871480
BENTO GONCALVES	53-34526825	AVARE	14-37322142	TABOAO DA SERRA	11-47871480
CAMAQUA	51-36711686	BARRETOS	17-33222742	TABOAO DA SERRA	11-47871480
CANELA	54-32821551	BAURU	14-31049551	TABOAO DA SERRA	11-47871480
CARAZINHO	54-33302292	BIRIGUI	18-36424011	TABOAO DA SERRA	11-47871480
CAXIAS DO SUL	54-30211808	BOTUCATU	14-38821081	TABOAO DA SERRA	11-47871480
DOIS IRMAOS	51-35641286	CAMPINAS	19-37372500	TABOAO DA SERRA	11-47871480
ERECIM	54-33211933	CAMPINAS DO JORDAO	12-36622142	TABOAO DA SERRA	11-47871480
ESTANCIA VELHA	51-35612142	CATANDUVA	17-35232524	TABOAO DA SERRA	11-47871480
FARROUPILHA	54-32683603	CERUILHO	15-32842121	TABOAO DA SERRA	11-47871480
FLORES DA CUNHA	54-32922625	CRUZEIRO	12-31433859	TABOAO DA SERRA	11-47871480
FREDERICO WESTPHALEN	55-37441850	DIADEMA	11-40430669	TABOAO DA SERRA	11-47871480
GRAVATAI	51-30422830	DRACENA	18-38212479	TABOAO DA SERRA	11-47871480
IJUÍ	55-33327766	FERNANDOPOLIS	17-34423752	TABOAO DA SERRA	11-47871480
LAJEADO	51-37145155	FRANCA	16-37223898	TABOAO DA SERRA	11-47871480
MARAU	54-33424571	FRANCO DA ROCHA	11-44492608	TABOAO DA SERRA	11-47871480
MONTENEGRO	51-36324187	GUARATINGUETA	12-31350303	TABOAO DA SERRA	11-47871480
NOVA PRATA	54-32421328	GUARUJA	13-33562942	TABOAO DA SERRA	11-47871480
NOVO HAMBURGO	51-35823191	GUARULHOS	11-24431153	TABOAO DA SERRA	11-47871480
OSORIO	51-36632524	IBITINGA	16-33417665	TABOAO DA SERRA	11-47871480
PASSO FUNDO	54-33111104	INDAIATUBA	19-38753831	TABOAO DA SERRA	11-47871480
PELOTAS	53-32223633	ITAPETININGA	15-32710936	TABOAO DA SERRA	11-47871480
PORTO ALEGRE	51-32226941	ITAPIRA	19-38633802	TABOAO DA SERRA	11-47871480
PORTO ALEGRE	51-33256653	ITAPOLIS	16-32622524	TABOAO DA SERRA	11-47871480
PORTO ALEGRE	51-32268834	ITAQUAQUECETUBA	11-46404162	TABOAO DA SERRA	11-47871480
RIO GRANDE	53-32323211	ITARARE	15-35322743	TABOAO DA SERRA	11-47871480
SANTA CRUZ DO SUL	51-37153048	ITU	11-40230188	TABOAO DA SERRA	11-47871480
SANTA MARIA	55-30282235	ITUVERAVA	16-37293365	TABOAO DA SERRA	11-47871480
SANTA ROSA	55-35113449	JALES	17-36324479	TABOAO DA SERRA	11-47871480
SAO JOSE DO OURO	54-33521216	JAU	14-36222117	TABOAO DA SERRA	11-47871480
SOBRADINHO	51-37421409	JUNDIAI	11-45862182	TABOAO DA SERRA	11-47871480
TAPERANA	54-33851160	LIMEIRA	19-35713528	TABOAO DA SERRA	11-47871480
TAQUARI	51-36534390	LIMEIRA	19-34413179	TABOAO DA SERRA	11-47871480
TORRES	51-36641940	LINS	14-35227283	TABOAO DA SERRA	11-47871480
TRES DE MAIO	55-35358727	MARILIA	14-34547437	TABOAO DA SERRA	11-47871480
URUGUAIANA	55-34118069	MATAO	16-33821046	TABOAO DA SERRA	11-47871480
VACARIA	54-32311396	MAJIA	11-45145233	TABOAO DA SERRA	11-47871480
VENANCIO AIRES	51-37411443	MOGI DAS CRUZES	11-47941814	TABOAO DA SERRA	11-47871480
VERA CRUZ	51-37181350	MOGI GUAÇU	19-38181171	TABOAO DA SERRA	11-47871480
		MOJI MIRIM	19-38624401	TABOAO DA SERRA	11-47871480
RONDÔNIA		OLIMPIA	17-32805378	TABOAO DA SERRA	11-47871480
BURITIS	69-32383830	OSASCO	11-36837343	TABOAO DA SERRA	11-47871480
CACAOAL	69-34431415	OURINHOS	14-33225457	TABOAO DA SERRA	11-47871480
GUAJARA MIRIM	69-35414430	PIRACICABA	19-34340454	TABOAO DA SERRA	11-47871480
PORTO VELHO	69-32273377	PIRASSUNUNGA	19-35614091	TABOAO DA SERRA	11-47871480
		PORTO FERREIRA	19-35851891	TABOAO DA SERRA	11-47871480
RORAIMA		PRESIDENTE PRUDENTE	18-32225168	TABOAO DA SERRA	11-47871480
BOA VISTA	95-32249605	PROMISSAO	14-35411696	TABOAO DA SERRA	11-47871480
		REGISTRO	13-38212324	TABOAO DA SERRA	11-47871480
SANTA CATARINA		RIBEIRAO PRETO	16-36368156	TABOAO DA SERRA	11-47871480
ARARANGUA	48-35220304	RIBEIRAO PRETO	16-39049908	TABOAO DA SERRA	11-47871480
BALNEARIO CAMBORIÚ	47-33630706	RIO CLARO	19-35348543	TABOAO DA SERRA	11-47871480
BLUMENAU	47-33233907	SALTO	11-40296563	TABOAO DA SERRA	11-47871480
BRUSQUE	47-33557518	SANTO ANDRE	11-49905288	TABOAO DA SERRA	11-47871480
CANOINHAS	47-36223615	SANTOS	13-32272947	TABOAO DA SERRA	11-47871480
CAPINZAL	49-35552266	SAO BERNARDO CAMPO	11-41257000	TABOAO DA SERRA	11-47871480
CHAPECO	49-33221144			TABOAO DA SERRA	11-47871480

CERTIFICADO DE GARANTIA NO BRASIL

Este aparelho é garantido pela Philips do Brasil Ltda., por um período superior ao estabelecido por lei. Porém, para que a garantia tenha validade, é imprescindível que, além deste certificado, seja apresentada a nota fiscal de compra do produto.

A Philips do Brasil Ltda. assegura ao proprietário consumidor deste aparelho as seguintes garantias, a partir da data de entrega do produto, conforme expresso na nota fiscal de compra, que passa a fazer parte deste certificado:

Garantia para rádios e reprodutores de CD portáteis (sem caixa acústica destacável): 180 dias

Garantia para os demais produtos da marca Philips: 365 dias.

Esta garantia perderá sua validade se:

- O defeito apresentado for ocasionado pelo uso indevido ou em desacordo com o seu manual de instruções.
- O produto for alterado, violado ou consertado por pessoa não autorizada pela Philips.
- O produto for ligado a fonte de energia (rede elétrica, pilhas, bateria, etc.) de características diferentes das recomendadas no manual de instruções e/ou no produto.
- O número de série que identifica o produto estiver de alguma forma adulterado ou rasurado.

Estão excluídos desta garantia defeitos decorrentes do descumprimento do manual de instruções do produto, de casos fortuitos ou de força maior, bem como aqueles causados por agentes da natureza e acidentes. Excluem-se igualmente desta garantia defeitos decorrentes do uso dos produtos em serviços não doméstico/residencial regular ou em desacordo com o uso recomendado.

ESTÃO EXCLUÍDAS DA GARANTIA ADICIONAL AS PILHAS OU BATERIAS FORNECIDAS JUNTO COM O CONTROLE REMOTO.

Nos municípios onde não exista assistência técnica autorizada Philips, as despesas de transporte do aparelho e/ou técnico autorizado correm por conta do consumidor requerente do serviço.

A garantia não será válida se o produto necessitar de modificações ou adaptações para habilitá-lo a operar em qualquer outro país que não aquele para o qual foi designado, fabricado, aprovado e/ou autorizado, ou ter sofrido qualquer dano decorrente deste tipo de modificação.

Philips do Brasil Ltda.

No Brasil, para informações adicionais sobre o produto, entre em contato com o CIC - Centro de Informações ao Consumidor através dos telefones (11) 2121-0203 (Grande São Paulo) e 0800-701-0203 (demais regiões e estados).

Horário de atendimento: de segunda a sexta-feira, das 8h às 20h e sábados das 8h às 13h.

Visite também nossa página de suporte ao consumidor no website www.philips.com.br/suporte, onde também está disponível a lista completa e atualizada das assistências técnicas autorizadas Philips.

***Para atendimento fora do Brasil, contate a Philips local ou a: Philips Consumer Service
Beukenlaan 2 - 5651 CD Eindhoven The Netherlands***

Certificado de Garantía en Argentina

Artefacto:

**Fabricante/Importador: Philips Argentina S.A.
y/o Fábrica Austral de Productos Eléctricos S.A.**

Dirección: Vedia 3892 - Buenos Aires

Fecha de Venta:

Modelo:

--

Nro. de serie

Firma y sello de la casa vendedora.

PHILIPS ARGENTINA S.A. en adelante denominada “la empresa”, garantiza al comprador de este artefacto por el término de (1) año a partir de la fecha de adquisición, el normal funcionamiento contra cualquier defecto de fabricación y/o vicio de material, y se compromete a reparar el mismo —sin cargo alguno para el adquirente— cuando el mismo fallare en situaciones normales de uso y bajo las condiciones que a continuación se detallan:

1. Este certificado de garantía es válido únicamente en la Republica Argentina. El certificado debe ser completado por la casa vendedora y ser presentado por el usuario conjuntamente con la factura original de compra.
2. Serán causas de anulación de esta garantía en los casos que corresponda:
 - 2.1. Uso impropio o distinto del uso doméstico.
 - 2.2. Exceso o caídas de tensión eléctrica que impliquen uso en condiciones anormales.
 - 2.3. Instalación y/o uso en condiciones distintas a las marcadas en el “Manual de instalación y uso” que se adjunta a esta garantía.
 - 2.4. Cualquier intervención al artefacto por terceros no autorizados por la empresa.
3. La garantía carecerá de validez si se observare lo siguiente:
 - 3.1. Enmiendas o raspaduras en los datos del certificado de garantía o factura.
 - 3.2. Falta de factura original de compra que detalle tipo de artefacto, modelo, número de serie y fecha que coincida con los del encabezamiento del presente certificado.
4. No están cubiertos por esta garantía los siguientes casos:
 - 4.1. Los daños ocasionados al exterior del gabinete.
 - 4.2. Las roturas, golpes, caídas o rayaduras causadas por traslados.
 - 4.3. Los daños o fallas ocasionados por deficiencias, sobretensiones, descargas o interrupciones del circuito de alimentación eléctrica o rayos, deficiencias en la instalación eléctrica del domicilio del usuario o conexión del artefacto a redes que no sean las especificadas en el Manual de Uso del mismo.
 - 4.4. Las fallas, daños, roturas o desgastes producidos por el maltrato o uso indebido del artefacto y/o causadas por inundaciones, incendios, terremotos, tormentas eléctricas, golpes o accidentes de cualquier naturaleza.
 - 4.5. Las fallas o daños ocasionados en desperfectos en la línea telefónica.
 - 4.6. Las fallas producidas por una mala recepción ocasionada en el uso de una antena deficiente o en señales de transmisión débiles.
5. Las condiciones de instalación y uso del artefacto se encuentran detalladas en el Manual de Uso del mismo.
6. La empresa no asume responsabilidad alguna por los daños personales o a la propiedad al usuario o a terceros que pudieran causar la mala instalación o uso indebido del artefacto, incluyendo en este último caso a la falta de mantenimiento.
7. En caso de falla, el usuario deberá requerir la reparación a la empresa a través del Service Oficial y/o Talleres Autorizados más próximos a su domicilio y cuyo listado se acompaña al presente. La empresa a segura al usuario la reparación y/o reposición de piezas para su correcto funcionamiento en un plazo no mayor a 30 días contados a partir de la fecha de solicitud de reparación, salvo caso fortuito o fuerza mayor.

8. Toda intervención del servicio técnico realizada a pedido del usuario dentro del plazo de garantía, que no fuera originada por falla o defecto alguno cubierto por este certificado, deberá ser abonado por el interesado de acuerdo a la tarifa vigente.
9. El presente certificado anula cualquier otra garantía implícita o explícita, por la cual y expresamente no autorizamos a ninguna otra persona, sociedad o asociación a asumir por nuestra cuenta ninguna responsabilidad con respecto a nuestros productos.
10. En caso de que durante el período de vigencia de esta garantía el artefacto deba ser trasladado a las Delegaciones Oficiales y/o Talleres Autorizados de Service para su reparación, el transporte será realizado por la empresa y serán a su cargo los gastos de flete y seguros y cualquier otro que deba realizarse para su ejecución.



PHILIPS

Red de Talleres Autorizados en Argentina

CAPITAL FEDERAL

ATTENDANCE S.A.

- Av. Monroe 3351 (C1430BKA) Cap. Fed.
- Tel.: 4545-5574/0704 ó 6775-1300
- Ventas de Repuestos y Accesorios
- Tel.: 4545-0854

DIG TRONIC

- Av. San Martín 1762 (C1416CRS) Cap. Fed.
- Tel.: 4583-1501

ELECTARG S.R.L.

- Av. Córdoba 1357 (C1055AAD) Cap. Fed.
- Ventas de Repuestos y Accesorios
- Tel.: 4811-1050

Caaballito Electarg J. M. Moreno 287 4903-6967/6854/8983

BUENOS AIRES

Azul	Herlein Raúl Horacio	Av. 25 de Mayo 1227	(02281) 428719
Bahía Blanca	Neutron	Soler 535	(0291) 4535329
Bragado	Yacovino Juan J.	San Martín 2141	(02342) 424147
Campana	Electricidad Krautor	Lavalle 415	(03489) 432919
Chivilcoy	Fama	Coronel Suárez 110	(02346) 424129
Junín	Junin Service	Alsina 537	(02362) 442754
La Plata	Da Tos e Hijos	Calle 68 N° 1532	(0221) 4516021
La Plata	Service Técnico La Plata	Av. 51 N° 1051 esq. 16	(0221) 4108155
Mar de Ajó	Tauro Electrónica	Catamarca 14	(02257) 421750
Mar del Plata	Central Service	Olazábal 2249	(0223) 4721639/4729367
Mar del Plata	Service Integral	Diag. Pueyrredón 3229	(0223) 4945633
Necochea	Electrónica Camejo	Calle 63 N° 1745	(02262) 426134
Pehuajó	Calcagni Carlos Alberto	Zubiría 794	(02396) 472665
Pergamino	ACV Sistemas	Dr. Alem 758	(02477) 421177
Pergamino	El Service	Juan B. Justo 1931	(02477) 418000

San Nicolás	Servitec	Bv. Alvarez 148	(03461) 454729/429578
San Pedro	Electrónica Menisale	Mitre 1695	(03329) 425523
Tandil	Lazzarini Oscar Rafael	Pellegrini 524	(02293) 442167
Trenque Lauquen	Labrone Electrónica	Av. San Martín 426	(02392) 423248
Tres Arroyos	Saini Fabián y Sergio	Av. Belgrano 562	(02983) 427369
Zárate	Electrónica Spinozzi	Ituzaingo 1030	(03487) 427353

GRAN BUENOS AIRES

Avellaneda	Casa Torres S.A.	Av. Mitre 2559	4255-5854
Florencio Varela	Casa Torres S.A.	San Martín 2574	4255-5854
Gregorio de Laferrere	Electrónica Alvarez	Honorio Luque 6084	4626-1322
Lomas de Zamora	Attendance S.A. Lomas	Laprida 485	4292-8900
Merlo	Argentronica S.H.	Pte. Cámpora 2175	(0220) 4837177/4829334
Moreno	Argentronica S.H.	Bmé. Mitre 2977 loc.2	(0237) 4639500
Morón	Servotronic	Ntra. Sra. del Buen Viaje 1222	4627-5656
Olivos	Appliance	Av. Libertador 2684	4794-7700
Quilmes	Casa Torres S.A.	E. Rios esq. Gran Canaria	4255-5854
Ramos Mejía	Electarg S.R.L. Suc.	Belgrano 224	4656-0619
San Miguel	Servotronic San Miguel	Belgrano 999	4664-4131
Villa Ballester	Servotronic	J. Hernández 3101	4767-2515/4768-5249

CATAMARCA

Catamarca	Omicron Central de Serv.	San Martín 225	(03833) 427235
-----------	--------------------------	----------------	----------------

CHACO

Resistencia	Freschi Jorge Oscar	Av. Avalos 320	(03722) 426030
-------------	---------------------	----------------	----------------

CHUBUT

Comodoro Rivadavia	C.A.S. S.R.L.	Alem 145	(0297) 4442629
Trelew	Fagtron Electrónica	Brasil 253	(02965) 427073

CORDOBA

Córdoba Capital	Servelco S.R.L.	Pje. E. Marsilla 635	(0351) 4724008/4732024
Río Cuarto	Mauritto Víctor G.	Bv. Almafuerie 487	(0358) 4660204
Río Cuarto	Capaldi Abel	Paunero 832	(0358) 4623003
Río Tercero	Service Omega	Homero Manzi 149	(03571) 423330
San Francisco	Acuña Walter Electrónica	M. Moreno 360	(03564) 425367
Villa María	Grasso Electrónica	Bv. Alvear 541	(0353) 4521366
Villa María	Vanguard Sist. Electrónicos	México 421	(0353) 4532951

Language Code

Abkhazian	6566	Inupiaq	7375	Pushto	8083
Afar	6565	Irish	7165	Russian	8285
Afrikaans	6570	Íslenska	7383	Quechua	8185
Amharic	6577	Italiano	7384	Raeto-Romance	8277
Arabic	6582	Ivrit	7269	Romanian	8279
Armenian	7289	Japanese	7465	Rundi	8278
Assamese	6583	Javanese	7486	Samoan	8377
Avestan	6569	Kalaallisut	7576	Sango	8371
Aymara	6589	Kannada	7578	Sanskrit	8365
Azerhijani	6590	Kashmiri	7583	Sardinian	8367
Bahasa Melayu	7783	Kazakh	7575	Serbian	8382
Bashkir	6665	Kernewek	7587	Shona	8378
Belarusian	6669	Khmer	7577	Shqip	8381
Bengali	6678	Kinyarwanda	8287	Sindhi	8368
Bihari	6672	Kirghiz	7589	Sinhalese	8373
Bislama	6673	Komi	7586	Slovensky	8373
Bokmål, Norwegian	7866	Korean	7579	Slovenian	8376
Bosanski	6683	Kuanyama; Kwanyama	7574	Somali	8379
Brezhoneg	6682	Kurdish	7585	Sotho; Southern	8384
Bulgarian	6671	Lao	7679	South Ndebele	7882
Burmese	7789	Latina	7665	Sundanese	8385
Castellano, Español	6983	Latvian	7686	Suomi	7073
Catalán	6765	Letzeburgesch;	7666	Swahili	8387
Chamorro	6772	Limburgan; Limburger	7673	Swati	8383
Chechen	6769	Lingala	7678	Svenska	8386
Chewa; Chichewa; Nyanja	7889	Lithuanian	7684	Tagalog	8476
中文	9072	Luxembourgish;	7666	Tahitian	8489
Chuang; Zhuang	9065	Macedonian	7775	Tajik	8471
Church Slavic; Slavonic	6785	Malagasy	7771	Tamil	8465
Chuvash	6786	Magyar	7285	Tatar	8484
Corsican	6779	Malayalam	7776	Telugu	8469
esky	6783	Maltese	7784	Thai	8472
Dansk	6865	Manx	7186	Tibetan	6679
Deutsch	6869	Maori	7773	Tigrinya	8473
Dzongkha	6890	Marathi	7782	Tonga (Tonga Islands)	8479
English	6978	Marshallese	7772	Tsonga	8483
Esperanto	6979	Moldavian	7779	Tswana	8478
Estonian	6984	Mongolian	7778	Türkçe	8482
Euskara	6985	Nauru	7865	Türkmen	8475
	6976	Navaho; Navajo	7886	Twi	8487
Faroese	7079	Ndebele, North	7868	Uighur	8571
Français	7082	Ndebele, South	7882	Ukrainian	8575
Frysk	7089	Ndonga	7871	Urdu	8582
Fijian	7074	Nederlands	7876	Uzbek	8590
Gaelic; Scottish Gaelic	7168	Nepali	7869	Vietnamese	8673
Gallegan	7176	Norsk	7879	Volapuk	8679
Georgian	7565	Northern Sami	8369	Walloon	8765
Gikuyu; Kikuyu	7573	North Ndebele	7868	Welsh	6789
Guarani	7178	Norwegian Nynorsk;	7878	Wolof	8779
Gujarati	7185	Occitan; Provençal	7967	Xhosa	8872
Hausa	7265	Old Bulgarian; Old Slavonic	6785	Yiddish	8973
Herero	7290	Oriya	7982	Yoruba	8979
Hindi	7273	Oromo	7977	Zulu	9085
Hiri Motu	7279	Ossetian; Ossetic	7983		
Hrwatski	6779	Pali	8073		
Ido	7379	Panjabi	8065		
Interlingua (International)	7365	Persian	7065		
Interlingue	7365	Polski	8076		
Inuktitut	7385	Português	8084		

