

PHILIPS

Universal Remote

SRP6011



User manual

Register your product and get support at
www.philips.com/support

Contents

1	Your universal remote	2
	Introduction	2
	Overview of the universal remote	2

2	Get started	3
	Insert batteries (not included)	3
	Set up the universal remote	3

3	Use your universal remote control	6
	Learning	6

4	Notice	7
	Disposal of your old product and battery	7

5	Service and support	8
	Frequently asked questions	8
	Need help?	8

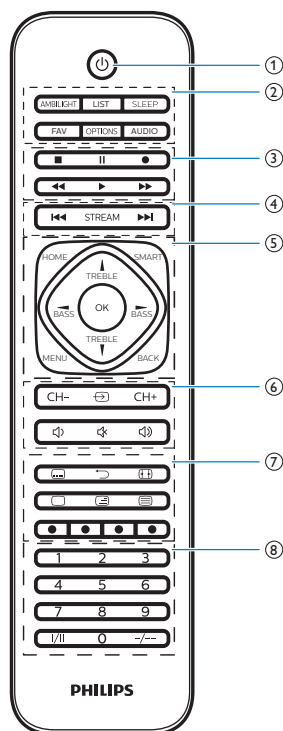
1 Your universal remote

Congratulations on your purchase, and welcome to Philips! To fully benefit from the support that Philips offers, register your product at www.philips.com/welcome

Introduction

With the universal remote, you can use it to operate your device.

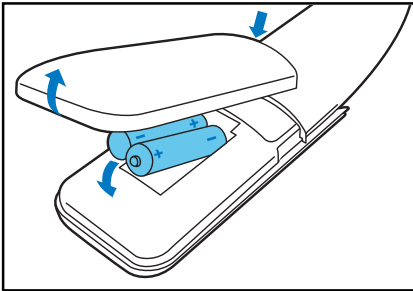
Overview of the universal remote



- ① **⏻** : power on or off.
- ② **AMBLIGHT**: switch the amblight on/off.
LIST: open the channel list.
SLEEP: sleep timer
FAV: access the favorite channel list.
OPTIONS: access the options menu.
AUDIO: select the audio channel.
- ③ **■** : stop
⏸ : pause
● : record
⏮ : rewind
▶ : play
⏭ : fast forward
- ④ **⏮** : previous track
STREAM: shortcut to Netflix or other App.
⏭ : next track
- ⑤ **HOME**
SMART: SMART TV, My App or Apps.
MENU: menu on or off.
BACK: go back one menu level.
OK: confirm your selection.
TREBLE/BASS: select the sound preference.
▲ / ▼ / ◀ / ▶: scroll the menu up/down/left/right.
- ⑥ **CH+/-**: go to the next/previous channel.
⌂: select available source inputs (antenna, cable, etc.).
🔊 : volume down
🔇 : mute
🔊 : volume up
- ⑦ **☑** : subtitle
↶ : return to the previous tuned channel.
⌂ : screen format
☐ : teletext off
☑ : teletext mix
☑ : teletext on
Red/Green/Yellow/Blue: context sensitivity buttons.
- ⑧ **Digit buttons**
I/II : select the audio channel.
-/-- : select between one and two-figure channel numbers.

2 Get started

Insert batteries (not included)



Warning

- Check the battery polarity when inserting in the battery compartment. Incorrect polarity may damage the product.

Caution

- Risk of explosion! Keep batteries away from heat, sunshine or fire. Never discard batteries in fire.
- Risk of decreased battery life! Never mix different brands or types of batteries.

Note

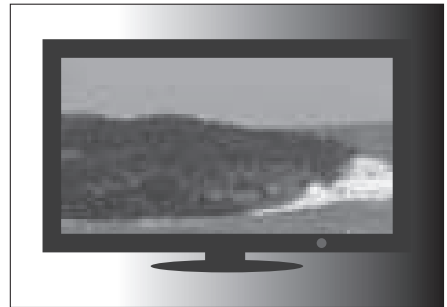
- When you replace the batteries, all user settings will be retained in the memory of the universal remote for 5 minutes.

Set up the universal remote

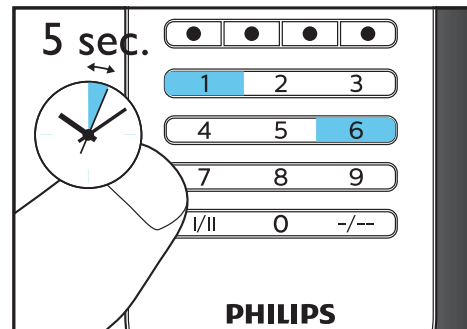
You must first set up the universal remote before operating your device.

Set up by code selection

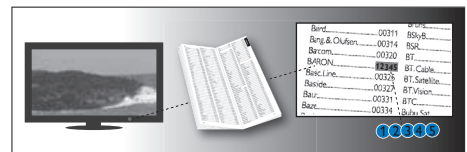
1 Switch on your device.



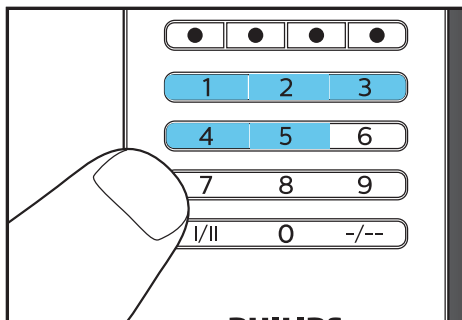
2 Press and hold **1** and **6** at the same time for 5 seconds until the red LED is on.



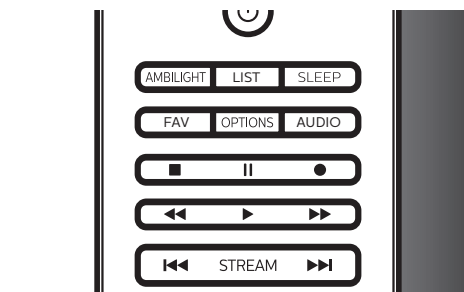
3 Look up the 5-digit code for your brand in the code list. Codes are listed by the device type and brand name. The most popular code is listed first.



- 4 Enter the first 5-digit code using the digit buttons.



- 5 If the light is off, a valid code is saved. Otherwise, the light will flash six times, and then remains on for code re-entry.



- 6 Operate the device with the universal remote. If your device responds correctly, it means you have entered the right code. Otherwise, repeat from Step 2, and enter the second code on the list.



Note

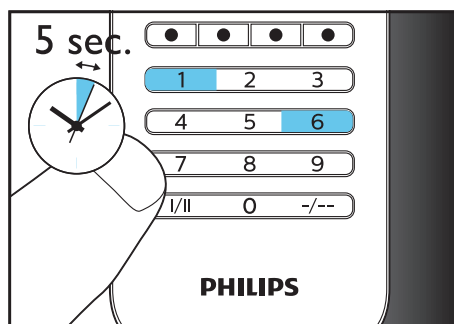
- It is possible sometimes that your device only responds to some of the buttons. In such case, set up with the next code in the code list, and try operating your device again. If there spill problem on code or key, you can try to learn a key by learning function if the remote support learning function.

Auto registration

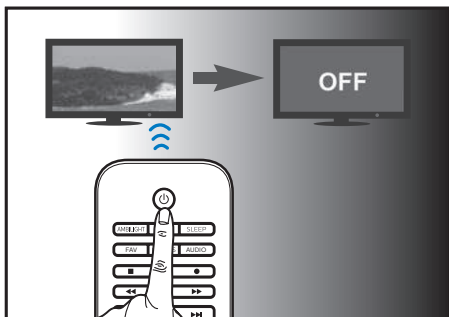
- 1 Switch on your device.



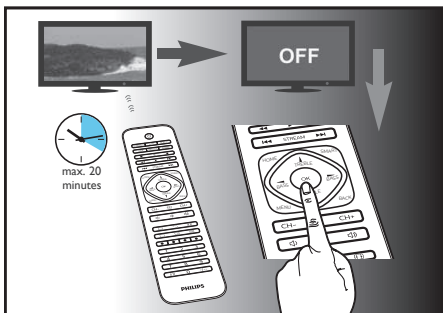
- 2 Press and hold **1** and **6** at the same time for 5 seconds until the red LED is on.



- 3 Point at your device with the universal remote. Then press and release **1** to start searching the code for your brand. A different infrared signal is sent every 2 seconds as the universal remote searches, indicated by a blue flash.



- 4 When the device is off, **immediately** press and release **OK** to save the code. The blue LED indicator will turn off.



- 5 Operate the device with the universal remote. If your device responds correctly, it means you have saved the right code.

Note

- Auto registration can be reversed, by pressing and releasing **POWER** once more during the auto registration process. This is helpful if you missed out the chance to press **OK** within 2 seconds. Make sure that the device is first powered on again.
- It is possible sometimes that your device only responds to some of the buttons. In such case, set up with the next code in the code list, and try operating your device again.

3 Use your universal remote control

Learning

You must have an original remote for the Universal Remote Control (URC) to learn code from it.

Learn commands

- 1 Press and hold **1** and **6** at the same time for 5 seconds until the red LED is on.
- 2 Enter the learning code **99900**. The red LED light will flash once and then remains on.
- 3 Place the URC and the original remote, head to head aiming at each other, on a flat surface.
- 4 On the URC, press the button that you would like to learn a code from the original remote. The LED will flash twice and stay on.
- 5 On the original remote, press and hold the button that you would like to learn from for 2 seconds.
- 6 The LED will blink once and stay on if the learning was successful. To learn another key, repeat Step 4. To exit, press **1** and **6** at the same time.
- 7 The LED will blink 6 times quickly if learning failed. Repeat Step 4 to learn again.



Note

- On step 4, if no key is selected for more than 15 seconds, the LED indicator will flash six times and the learning mode will exit automatically.
- On step 5, if no other remote signal is received for more than 30 seconds, the LED indicator will flash six times and then remains on. You will need to select a desired key again for learning as in step 4 on your universal remote control.
- Each function key will hold only one command, a new command to be learned will automatically replace the previous one.

Clear learned commands

Clear all codes learned for the universal remote control

- 1 Press and hold **1** and **6** at the same time for 5 seconds until the red LED is on.
- 2 Enter the learning code **99920**. The red LED light will remain on briefly, flash twice and then turns off.
 - ↳ All codes learned for the universal remote control will be cleared.

4 Notice

Disposal of your old product and battery



Your product is designed and manufactured with high quality materials and components, which can be recycled and reused.



This symbol on a product means that the product is covered by European Directive 2012/19/EU.



This symbol means that the product contains batteries covered by European Directive 2013/56/EU which cannot be disposed of with normal household waste.

Inform yourself about the local separate collection system for electrical and electronic products and batteries. Follow local rules and never dispose of the product and batteries with normal household waste. Correct disposal of old products and batteries helps prevent negative consequences for the environment and human health.

Removing the disposable batteries

To remove the disposable batteries, see section 'Insert batteries'.



When this logo is attached to a product, it means a financial contribution has been paid to the associated national recovery and recycling system.

Environmental information

All unnecessary packaging has been omitted. We have tried to make the packaging easy to separate into three materials: cardboard (box), polystyrene foam (buffer) and polyethylene (bags, protective foam sheet.)

Your system consists of materials which can be recycled and reused if disassembled by a specialized company. Please observe the local regulations regarding the disposal of packaging materials, exhausted batteries and old equipment.

5 Service and support

operators can help you determine whether SRP6011 is working properly. You will find our contact details at the end of this user manual. For online support, visit www.philips.com/support

Frequently asked questions

My universal remote does not work at all.

- Check if you have correctly setup the device with the right code. Check if you have pressed the corresponding device key for your device.
- Check if the batteries are inserted properly. If the battery level is low, replace the batteries.
- Check if your device is powered on.

If several device codes are listed under the brand of my device, how can I select the correct device code?

To seek the correct device code, test the codes one by one. The codes are sorted by popularity, and the most popular code is listed first.

My device responds only to some of the commands.

You have set a code for which only some commands work properly but some do not. Try other codes until most keys work properly or learn the key from original remote if it support learning function.

Need help?

We advise you to first read this user manual carefully. It helps you set up and use the universal remote.

If, however, you require extra information or have additional questions about setup, usage, warranty, etc of the SRP6011, you can always contact us.

When calling our helpline, make sure to have the SRP6011 at hand when you call, so that our



Specifications are subject to change without notice.
Philips and the Philips Shield Emblem are registered trademarks of Koninklijke Philips N.V. and are used under license.
This product has been manufactured by and is sold under the responsibility of MMD Hong Kong Holding Limited or one of its affiliates, and MMD Hong Kong Holding Limited is the warrantor in relation to this product.

SRP6011_10_UM_V1.0

