

Register your product and get support at
www.philips.com/welcome

Streamium

WAC7500



EN	User manual	1
	Contact information	45

PHILIPS



PHILIPS

Philips Consumer Electronics

HK- 0738-WAC7500
(report No.)

EC DECLARATION OF CONFORMITY

We,

Philips Consumer Electronics
(manufacturer's name)

Philips, Glaslaan 2, 5616 JB Eindhoven, The Netherlands
(manufacturer's address)

declare under our responsibility that the electrical product:

Philips
(name)

WAC7500/12, /05
(type or model)

Wireless Music Center
(product description)

to which this declaration relates is in conformity with the following standards:

EN55013 : 2001 +A1:2003 + A2:2006	EN 300 328 : 2004
EN55020 : 2002 + A1:2003 +A2:2005	EN 301 489-1 : 2005
EN 55022: 2006	EN 301 489-17: 2002
EN 55024: 1998 +A1:2001 +A2:2003	EN 50371 : 2002
EN 60065: 2002 +A1:2006	

(title and/or number and date of issue of the standards)

following the provisions of R &TTE Directive 1999/5/EC (incl. 73/23/EEC & 93/68/EEC directives and is produced by a manufacturing organization on ISO 9000 level.

Eindhoven,
September 18, 2007
(place, date)

Eric Tijssen
Program Manager
PCE I-Lab Entertainment Solutions
(signature, name and function)

Contents

1 Important	4
Safety	4
Notice	5
Recycling	5
2 Your Wireless Music Center	7
Overview	7
Front view	7
Top view	7
Side view	8
Remote control	8
3 Prepare	10
Position the WAC7500	10
Connect to AC power	10
Turn on / switch to standby	10
4 Connect to a home network	11
Create wireless connection with automatic IP address	11
Create wireless connection with static IP address	11
Create wired connection with automatic IP address	12
Create wired connection with static IP address	12
5 Build a music library on the harddisk	14
Import music from a PC	14
Install WADM software on the PC	14
Rip music from CDs on the WAC7500	15
Record music	15
6 Play	16
Adjust volume	16
Mute the sound	16
Play CD	16
Play HD music	16
Internet radio	16
Register the WAC7500 with Philips	16
Listen to Internet radio	16

Mark Internet radio stations as Favorites	17
Listen to Favorite Stations	17
Manually add Internet radio stations	17
Listen to My Media	18
FM radio	18
Listen to FM radio	18
Change frequency	18
Automatic channel search	19
Automatic channel search & autostore	19
Select preset channels	19
Manual search & store	19
Wirelessly stream music from a PC	20
Install Windows Media Player 11	20
Configure a PC to share music	20
Play from a flash memory USB device	20
Connect audio devices (AUX)	21
7 Play options	22
Repeat play	22
Shuffle play	22
Play by artist	22
Play by genre	22
Create a playlist	22
Add audio files to a playlist	22
Play from a playlist	23
8 Record from HD to USB	24
9 Alphanumeric search	25
10 Gracenote® CD information	25
11 Settings	26
Change Equalizer (EQ) settings	26
Activate Smart EQ	26
Adjust treble / bass	26
Set Dynamic Bass Boost (DBB)	26
Activate Incredible Surround sound	26
Time settings	27
Synchronize with RDS radio station	27
Set the time manually	27
Set the time format	27
Set standby timer	27
Alarm	27

Change language	28
Maintenance	28
Cleaning	28
Update	28
Update through PC connection	28
Restore the default settings	29
<hr/>	
12 Add a Philips Wireless Music Station (sold separately)	30
Add a Philips Wireless Music Station to the WAC7500	30
Broadcast music to Philips Wireless Music Stations	30
Music Follows Me	31
Delete a Philips Wireless Music Station from the WAC7500	31
Relocate a connected WAC7500 or Philips Wireless Music Station	31
<hr/>	
13 Technical data	32
Supplied accessories	33
PC connection requirements	33
<hr/>	
14 Troubleshooting	34
<hr/>	
15 Glossary	36

1 Important

Safety

Know these safety symbols



This 'bolt of lightning' indicates uninsulated material within your unit may cause an electrical shock. For the safety of everyone in your household, please do not remove product covering.

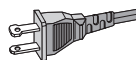
The 'exclamation point' calls attention to features for which you should read the enclosed literature closely to prevent operating and maintenance problems.

WARNING: To reduce the risk of fire or electric shock, this apparatus should not be exposed to rain or moisture and objects filled with liquids, such as vases, should not be placed on this apparatus.

CAUTION: To prevent electric shock, match wide blade of plug to wide slot, fully insert.

- ① Read these instructions.
- ② Keep these instructions.
- ③ Heed all warnings.
- ④ Follow all instructions.
- ⑤ Do not use this apparatus near water.
- ⑥ Clean only with dry cloth.

- ⑦ Do not block any ventilation openings. Install in accordance with the manufacturer's instructions.
- ⑧ Do not install near any heat sources such as radiators, heat registers, stoves, or other apparatus (including amplifiers) that produce heat.
- ⑨ For countries with a polarized mains, do not defeat the safety purpose of the polarized or grounding-type plug. A polarized plug has two blades with one wider than the other. A grounding type plug has two blades and a third grounding prong. The wide blade or the third prong are provided for your safety. If the provided plug does not fit into your outlet, consult an electrician for replacement of the obsolete outlet. **Caution:** To prevent electric shock, match the wide blade of the plug to the wide slot, fully insert.



- ⑩ Protect the power cord from being walked on or pinched, particularly at plugs, convenience receptacles, and the point where they exit from the apparatus.
- ⑪ Only use attachments/accessories specified by the manufacturer.
- ⑫ Use only with the cart, stand, tripod, bracket, or table specified by the manufacturer or sold with the apparatus. When a cart is used, use caution when moving the cart/apparatus combination to avoid injury from tip-over.



- ⑬ Unplug this apparatus during lightning storms or when unused for long periods of time.
- ⑭ Refer all servicing to qualified service personnel. Servicing is required when the apparatus has been damaged in any way, such as power-supply cord or plug is damaged, liquid has been spilled or objects have fallen into the apparatus, the apparatus has been exposed to rain or moisture, does not operate normally, or has been dropped.
- ⑮ **Battery usage CAUTION – To prevent battery leakage which may result in bodily injury, property damage, or damage to the unit:**
 - Install all batteries correctly, + and - as marked on the unit.
 - Do not mix batteries (old and new or carbon and alkaline, etc.).
 - Remove batteries when the unit is not used for a long time.
- ⑯ Apparatus shall not be exposed to dripping or splashing.
- ⑰ Do not place any sources of danger on the apparatus (e.g. liquid filled objects, lighted candles).
- ⑱ This product may contain lead and mercury. Disposal of these materials may be regulated due to environmental considerations. For disposal or recycling information, please contact your local authorities or the Electronic Industries Alliance: www.eiae.org.



Warning

- Never remove the casing of this WAC7500.
- Never lubricate any part of this WAC7500.
- Place this WAC7500 on a flat, hard and stable surface.
- Never place this WAC7500 on other electrical equipment.
- Only use this WAC7500 indoors. Keep this WAC7500 away from water, moisture and liquid-filled objects.
- Keep this WAC7500 away from direct sunlight, naked flames or heat.

Mains fuse (UK only)

This WAC7500 is fitted with an approved moulded plug. Should it become necessary to replace the mains fuse, this must be replaced with a fuse of the same value as indicated on the plug (identical Ampere specifications).

- 1 Remove fuse cover and fuse.
- 2 The replacement fuse must comply with BS 1362 and have the ASTA approval mark. If the fuse is lost, contact your dealer in order to verify the correct type.
- 3 Refit the fuse cover.

In order to maintain conformity to the EMC directive, the mains plug on this product must not be detached from the mains cord.

Notice

Class II equipment symbol



This symbol indicates that the unit has a double insulation system.

Recycling

Your product is designed and manufactured with high quality materials and components, which can be recycled and reused. When you see the crossed-out wheel bin symbol attached to a product, it means the product is covered by the European Directive 2002/96/EC:



Never dispose of your product with other household waste. Please inform yourself about

the local rules on the separate collection of electrical and electronic products. The correct disposal of your old product helps prevent potentially negative consequences on the environment and human health.

Your product contains batteries covered by the European Directive 2006/66/EC, which cannot be disposed of with normal household waste. Please inform yourself about the local rules on separate collection of batteries. The correct disposal of batteries helps prevent potentially negative consequences on the environment and human health.

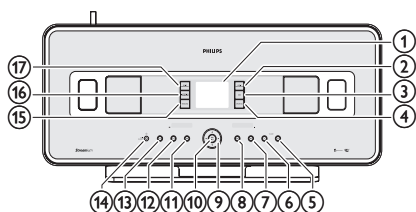
2 Your Wireless Music Center

Congratulations on your purchase and welcome to Philips!

To fully benefit from the support that Philips offers, register your product at www.philips.com/welcome.

Overview

Front view



- ① LCD (display)
- ② MUSIC FOLLOWS ME
- ③ DBB Dynamic Bass Boost
- ④ SMART EQ Smart Equalizer
- ⑤ +VOLUME increase volume
- ⑥ -VOLUME decrease volume
- ⑦ ■ stop
- ⑧ ►► skip forward
- ⑨ ▲▼◄► navigate left/right/up/down
- ⑩ OK/►|| confirm / play/pause
- ⑪ ◄◄ skip back
- ⑫ MENU
- ⑬ HOME
- ⑭ ⏻ On / Standby / Eco Standby

- Press briefly to toggle between modes Standby and On.
- Press and hold to toggle between modes On and Eco Standby (power-saving mode).

⑮ ● RECORD record

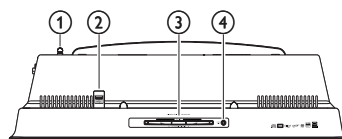
⑯ INCREDIBLE SURROUND SOUND

⑰ MUSIC BROADCAST

Note

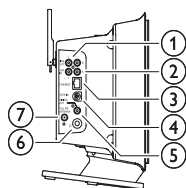
- The illumination of one corner of the casing is a design element.

Top view



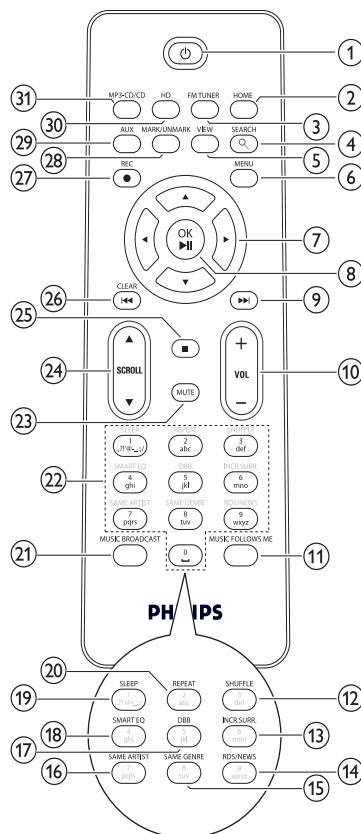
- ① Wi-Fi antenna
- ② USB jack
- ③ CD slot (insert CD facing you)
- ④ ▲ eject CD

Side view



- ① LINE OUT L / R line out jacks
- ② AUX L / R external device connections
- ③ ETHERNET Ethernet jack
- ④ DOCK IN docking jack
- ⑤ DIGITAL OUT digital out jack
- ⑥ headphone jack
- ⑦ 75 Ω FM ANTENNA FM antenna jack

Remote control



- ① On / Standby
- ② HOME
- ③ FM TUNER FM radio tuner
- ④ SEARCH
- ⑤ VIEW view screen / previous options list
- ⑥ MENU enter / exit setup menu.
- ⑦ navigate
- ⑧ confirm / play/pause
- ⑨ skip forward
- ⑩ +VOL – volume up / down

- ⑪ MUSIC FOLLOWS ME
- ⑫ SHUFFLE random play
- ⑬ INCR.SURR. Incredible Surround sound
- ⑭ RDS/NEWS
- ⑮ SAME GENRE
- ⑯ SAME ARTIST
- ⑰ DBB Dynamic Bass Boost
- ⑱ SMART EQ smart equalizer
- ⑲ SLEEP sleep timer
- ⑳ REPEAT
- ㉑ MUSIC BROADCAST
- ㉒ Alphanumeric keys
- ㉓ MUTE turn off sound output
- ㉔ ▲ SCROLL ▼
- ㉕ ■
- ㉖ CLEAR/◀◀clear entry / skip back
- ㉗ REC●record
- ㉘ MARK/UNMARK
- ㉙ AUX select external device
- ㉚ HD harddisk music
- ㉛ MP3-CD/CD

3 Prepare

- 1 Open the battery compartment.
- 2 Insert 2 AAA batteries with correct polarity (+/-) as indicated.
- 3 Close the battery compartment.

Position the WAC7500



Caution

- Risk of product damage! Place the WAC7500 on a surface that is level, flat, and strong enough to support the WAC7500.

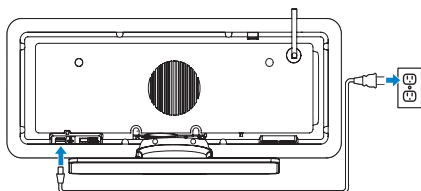
Connect to AC power



Warning

- Risk of product damage! Ensure that the power supply voltage corresponds to the voltage printed on the back or the underside of the WAC7500.

- 1 Connect the WAC7500 to the power supply



↳ Your WAC7500 turns on and is ready to be set up for use.



Note

- The type plate information is located at the back or at the underside of the WAC7500.

Turn on / switch to standby

You can select from the following status options:

- On
- Standby
 - Active standby. The Φ button on the remote control can turn on the WAC7500.
- Eco standby
 - Passive standby. Only the Φ button on the top panel can turn on the WAC7500.



Note

- If no buttons are pressed for 20 minutes, the WAC7500 switches to standby.

- 1 To turn on the WAC7500, press Φ .
- 2 To switch the WAC7500 to standby, press Φ .
- 3 To switch the WAC7500 to eco standby, press and hold the Φ button on the top panel.



Note

- When the WAC7500 is in eco standby mode, the remote control is inactive.

4 Connect to a home network

Before you connect the WAC7500 to a router:

- Ensure that the PC meets the minimum requirements.
You can choose one of these modes of connection:
- Wireless connection with automatic IP address (see 'Create wireless connection with automatic IP address' on page 11)
- Wireless connection with static IP address (see 'Create wireless connection with static IP address' on page 11)
- Wired connection with automatic IP address (see 'Create wired connection with automatic IP address' on page 12)
- Wired connection with static IP address (see 'Create wired connection with static IP address' on page 12)

Create wireless connection with automatic IP address

This is how to navigate and select with the remote control:

- Press ▲ or ▼ to select a menu option.
- Press ► to confirm a selection.
 - Press ◀ to go back to the previous screen.
- Press **HOME** to go to the Home menu.
The alphanumeric buttons of the remote control are multi-function buttons:
- To select a number or an alphanumeric character; press a button once or more until you see the number or alphabetic character in the display of the WAC7500.
- To cycle through the alphanumeric characters that are available, press a button repeatedly.
- To delete the last character entry from the display, press **CLEAR**.

This chapter shows you how to create a wireless connection to a home network with automatic IP address.

- 1 Ensure that your network name and network password or encryption key are available.
 - Some Internet service providers (ISP) require the use of a proxy server.
- 2 Turn on your wireless access point or wireless router with broadband Internet.
- 3 Turn on the WAC7500.
- 4 On the WAC7500, press **MENU**.
- 5 Select **[Settings] > [Network] > [Wireless]** and confirm.
- 6 Select the network from the list in the display.
 - Enter encryption key (if required) with the remote control, then press **OK** to continue.
- 7 Select **[Automatic] > (Apply settings?) [Yes]** and confirm.
→ The WAC7500 displays a confirmation screen that the settings are saved.

Create wireless connection with static IP address

This is how to navigate and select with the remote control:

- Press ▲ or ▼ to select a menu option.
- Press ► to confirm a selection.
 - Press ◀ to go back to the previous screen.
- Press **HOME** to go to the Home menu.
The alphanumeric buttons of the remote control are multi-function buttons:
- To select a number or an alphanumeric character; press a button once or more until you see the number or alphabetic character in the display of the WAC7500.
- To cycle through the alphanumeric characters that are available, press a button repeatedly.

- To delete the last character entry from the display, press **CLEAR** .
This chapter shows you how to create a wireless connection to a home network with static IP address.

- 1 Ensure that your encryption key (if required) is available.
- 2 Turn on your wireless access point or wireless router with broadband Internet.
- 3 Turn on the WAC7500.
- 4 On the WAC7500, press **MENU** .
- 5 Select **[Settings]** < **[Network]** > **[Wireless]** and confirm.
- 6 Select the network from the list in the display.
 - Enter encryption key (if required) with the remote control, then press **OK** to continue.
- 7 Select **[Static]** and confirm.
- 8 Enter the static IP address with the remote control and confirm with **OK** .
- 9 Select (Apply settings?) **[Yes]** and confirm.
 - ↳ The WAC7500 displays a confirmation screen that the settings are saved.

Create wired connection with automatic IP address

This is how to navigate and select with the remote control:

- Press **▲** or **▼** to select a menu option.
- Press **▶** to confirm a selection.
 - Press **◀** to go back to the previous screen.
- Press **HOME** to go to the Home menu. The alphanumeric buttons of the remote control are multi-function buttons:
- To select a number or an alphanumeric character; press a button once or more until you see the number or alphabetic character in the display of the WAC7500.

- To cycle through the alphanumeric characters that are available, press a button repeatedly.
- To delete the last character entry from the display, press **CLEAR** .
This chapter shows you how to create a wired connection to a home network with automatic IP address.

- 1 Use an Ethernet cable (sold separately) to connect the WAC7500 to the access point or router that connects to your home network with broadband Internet access.
- 2 Turn on your wireless access point or wireless router with broadband Internet.
- 3 Turn on the WAC7500.
- 4 On the WAC7500, press **MENU** .
- 5 Select **[Settings]** > **[Network]** > **[Wired]** > **[Automatic]** > (Apply settings?) **[Yes]** and confirm.
 - ↳ The WAC7500 displays a confirmation screen that the settings are saved.

Create wired connection with static IP address

This is how to navigate and select with the remote control:

- Press **▲** or **▼** to select a menu option.
- Press **▶** to confirm a selection.
 - Press **◀** to go back to the previous screen.
- Press **HOME** to go to the Home menu. The alphanumeric buttons of the remote control are multi-function buttons:
- To select a number or an alphanumeric character; press a button once or more until you see the number or alphabetic character in the display of the WAC7500.
- To cycle through the alphanumeric characters that are available, press a button repeatedly.
- To delete the last character entry from the display, press **CLEAR** .

This chapter shows you how to create a wired connection to a home network with automatic IP address.

- 1 Use an Ethernet cable (sold separately) to connect the WAC7500 to the access point or router that connects to your home network with broadband Internet access.
- 2 Turn on your wireless access point or wireless router with broadband Internet.
- 3 Turn on the WAC7500.
- 4 On the item, press **MENU** .
- 5 Select **[Settings] > [Network] > [Wired] > [Static]** and confirm.
- 6 Enter the static IP address with the remote control and confirm with **OK** .
- 7 Select (Apply settings?) **[Yes]** and confirm.
 - ↳ The WAC7500 displays a confirmation screen that the settings are saved.

5 Build a music library on the harddisk



**Be responsible
Respect copyrights**

You have the following options to build a music library on the harddisk:

- rip music from CDs
- import music from a PC
- record music from FM radio
- record music from an external device

Music recognition technology and related data are provided by Gracenote®. Gracenote is the industry standard in music recognition technology and related content delivery. For more information, please visit www.gracenote.com.

CD and music-related data from Gracenote, Inc., copyright © 2000-2007 Gracenote. Gracenote Software, copyright © 2000-2007 Gracenote. This product and service may practice one or more of the following U.S. Patents: #5,987,525; #6,061,680; #6,154,773, #6,161,132, #6,230,192, #6,230,207, #6,240,459, #6,304,523, #6,330,593, #7,167,857, and other patents issued or pending. Gracenote and CDDb are registered trademarks of Gracenote. The Gracenote logo and logotype, and the "Powered by Gracenote" logo are trademarks of Gracenote. Gracenote® is a registered trademark of Gracenote, Inc. The Gracenote logo and logotype, and the "Powered by Gracenote" logo are trademarks of Gracenote.

Import music from a PC

The import of music into the WAC7500 requires the WADM (Wireless Audio Device Manager) in the supplied PC installer. Before you can import music from a PC that is connected to a home network, you need to connect the WAC7500 to the PC.

Install WADM software on the PC

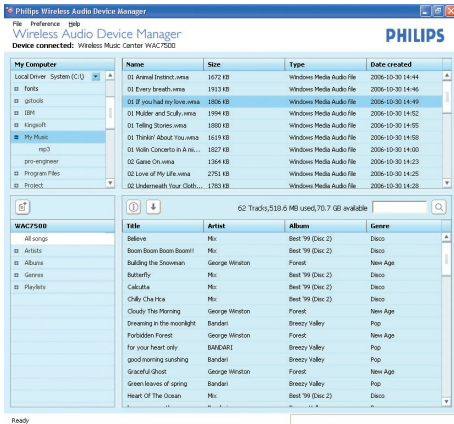
Install the WADM software on the PC and open the application.

- 1 In the WADM main menu, click **Content Management**.



- 2 In **My Computer** (top window), click to select file(s).

- 3 Drag and drop selected file(s) to WAC7500 (bottom window).



Rip music from CDs on the WAC7500

Rip from a CD to the harddisk of the WAC7500 at high speed:
(Audio CD, MP3/WMA CD)

Note

- While the WAC7500 is ripping, only the stop ■ function is available.

Tip

- You can rip while you listen, if you press **REC** ● during play.

- 1 On the WAC7500, insert CD with printed side facing you.
- 2 In the track list screen, press **REC** ●.
- 3 Press **MARK/UNMARK** to select/deselect tracks. (By default, the WAC7500 rips

all tracks of the CD when no tracks are marked.)

- Long press **MARK/UNMARK** to select/deselect all tracks.

- 4 Press **REC** ● to start ripping.
- 5 To rip another CD, repeat above steps 1 to 4.
- 6 To stop ripping, press ■.

Tip

- For information about how to change the rip quality, see chapter Settings.

Record music

You can record from 2 different sources.

- 1 Press
 - **AUX** to record from an external device.
 - **FMTUNER** to record from FM radio.
- 2 Press **REC** ●.
- 3 To stop recording, press ■.

6 Play

Adjust volume

- 1 During play, press **+VOL** **—** to adjust the volume.

Mute the sound

You can turn off the sound of your audio.

- 1 During play, press **MUTE** .
 - To turn the sound back on, press **MUTE** again.

Play CD

- 1 Insert CD into the CD slot with printed side facing you.
- 2 Press **OK** / **▶||** to play.
 - To eject the CD, ensure the CD is in stop mode and press **▲**.

Play HD music

This is how to navigate and select with the remote control:

- Press **▲** or **▼** to select a menu option.
- Press **▶** to confirm a selection.
 - Press **◀** to go back to the previous screen.
- Press **HOME** to go to the Home menu.

- 1 Press **HD** to enter the HD music menu.
 - ↳ The display guides you through the menu.
- 2 Press **OK** / **▶||** to play.
 - To stop play, press **■**.

Internet radio



Note

- Internet radio features require broadband Internet access.
- Internet radio features require registration.

Register the WAC7500 with Philips

- 1 The following steps show you how to register the Internet radio feature.
- 2 Turn on the WAC7500.
- 3 Turn on your wireless access point or wireless router with broadband Internet.
- 4 Ensure you have a valid email address.
- 5 Press **HOME**.
- 6 Press **▲** or **▼**, then **▶** to select **[Radio] > [Internet Radio]**.
 - ↳ The display shows the Internet radio registration screen.
- 7 Press alphanumeric buttons on the remote control to enter the valid email address.
- 8 Press **OK** / **▶||**.
 - ↳ The display confirms the automated email dispatch to your mailbox.
- 9 Check your email inbox for a message from **ConsumerCare@Philips.com** with the subject **Your Streamium Registration....**
- 10 Follow the instructions in the email to complete your registration process on the Philips website.
 - To return to the Home menu, press **HOME**.

Listen to Internet radio

- 1 Follow the steps to register the WAC7500 with Philips (only required once for first set-up).
- 2 Turn on the WAC7500.

- 3 Turn on your wireless access point or wireless router with broadband Internet.
- 4 Press **HOME**.
- 5 Press ▲ or ▼, then ► to select **[Radio] > [Internet Radio]**.
 - Press ▲ or ▼, then ► to select the Internet radio service.
 - To return to the Home menu, press **HOME**.



Note

- Internet radio features require broadband Internet access.

Mark Internet radio stations as Favorites

You can mark Internet radio stations as your Favourites so next time you want to listen to a station, it is easy to find.

- 1 Follow the steps to register the WAC7500 with Philips.
- 2 Turn on the WAC7500.
- 3 Turn on your access point / cable modem or router with broadband Internet.
- 4 When you listen to Internet radio, press ► to mark the station.
 - To return to the Home menu, press **HOME**.
 - The next time you connect to the Internet radio, the radio station is shown in the Favorite Stations menu.



Note

- Internet radio features require broadband Internet access.

Listen to Favorite Stations

You must store Internet radio stations as Favorites, before you can use this feature.

- 1 Follow the steps to register the WAC7500 with Philips.
- 2 Follow the steps to mark Internet radio stations as Favorites.
- 3 Turn on the WAC7500.
- 4 Turn on your access point / cable modem or router with broadband Internet.
- 5 Press **HOME**.
- 6 Press ▲ or ▼, then ► to select **[Radio] > [Internet Radio] > [User ID]** (user identification name that was used for the registration) > **[Favorite Stations]**.
 - Press **HOME** to go to the Home menu.



Note

- Internet radio features require broadband Internet access.



Tip

- You can also organize your Favorites under Steamium Management on the Philips website.

Manually add Internet radio stations

This chapter explains how to add individual URL addresses for Internet radio stations on the PC.

- 1 Follow the steps to register the WAC7500 with Philips, if you have not done so already.
- 2 On the registered product site, click the link **Streamium Management**.
- 3 Select **My Media**.
- 4 Click on the tab **Music**.
- 5 Enter the URL address of Internet radio station in the first column.
- 6 Enter a nickname in the second column.

- ↳ The nickname is the Internet radio stations identification that is displayed the WAC7500.

7 Enter a description in the third column.

8 Click on **Save** to confirm your entries.

Note

- If the manually added Internet radio station is available and broadcast in a compatible format, you can listen to it on the WAC7500.
- You can find the manually added Internet radio stations in the My Media list on the WAC7500.
- Internet radio features require broadband Internet access.

Listen to My Media

This is how to navigate and select with the remote control:

- Press **▲** or **▼** to select a menu option.
- Press **▶** to confirm a selection.
 - Press **◀** to go back to the previous screen.
- Press **HOME** to go to the Home menu. My Media allows you to access Internet radio stations that are not part of the standard service.

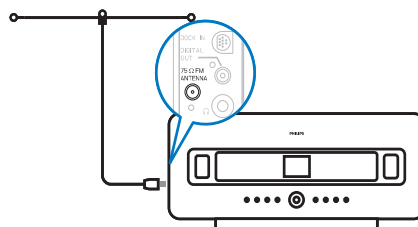
- 1 Follow the steps to register the WAC7500 with Philips.
- 2 Follow the steps to manually add Internet radio stations.
- 3 Turn on the WAC7500.
- 4 Turn on your access point / cable modem or router with broadband Internet.
- 5 Press **HOME**.
- 6 Select **[Radio]** > **[Internet Radio]** > **[User ID]** (user identification name that was used for the registration) and confirm.
- 7 Select **[My Media]** and confirm.
 - To return to the Home menu, press **HOME**.

Note

- Internet radio features require broadband Internet access.

FM radio

You can listen to FM radio with the WAC7500, if you connect the supplied antenna:



Listen to FM radio

- 1 Turn on the WAC7500.
- 2 Fully extended the connected FM antenna.
- 3 Press **HOME**.
- 4 Press **FM TUNER**.
 - ↳ The current frequency is displayed.
 - ↳ Press **HOME** to go to the Home menu.

Tip

- You can optimize the reception when you rotate the FM antenna.
- You can use the automatic search & store function to store channels under presets.

Change frequency

To fine tune the reception of a channel, you can adjust the channel frequency.

- 1 Turn on the WAC7500.

- 2 Press **HOME** .
- 3 Press **FM TUNER** .
 - ↳ The current frequency is displayed.
- 4 Press **▲▼** to adjust the frequency.
 - Press **HOME** to go to the Home menu.



Tip

- You can store channel frequencies under a preset channel number.

Automatic channel search

The WAC7500 can automatically search available channels.

- 1 Turn on the WAC7500.
- 2 Press **HOME** .
- 3 Press **FM TUNER** .
 - ↳ The current frequency is displayed.
- 4 Press and hold **▲** or **▼** to start automatic search function.
 - ↳ When a channel is found, the search stops.
- 5 Press **MENU** .
- 6 Select **[Save to Preset]**.
- 7 Press **▲** or **▼**, then **▶** to select.
 - ↳ The frequency is stored under the selected preset number.
 - ↳ Press **HOME** to go to the Home menu.

Automatic channel search & autostore

The WAC7500 can automatically search and store up to 60 channels under the preset numbers.

- 1 Turn on the WAC7500.
- 2 Press **HOME** .
- 3 Press **FM TUNER** .

- ↳ The current frequency is displayed.
- ↳ Press **MENU** .

- 4 Select **[Autostore radio]**.
 - ↳ The WAC7500 searches and stores channels.
 - ↳ When all available channels are stored, the search stops.
 - ↳ Press **HOME** to go to the Home menu.

Select preset channels

You can find your preset channels in the preset channel list.

- 1 Turn on the WAC7500.
- 2 Press **HOME** .
- 3 Press **FM TUNER** .
 - ↳ The current frequency is displayed.
- 4 Press **▶** to display preset channel numbers.
- 5 Press **▲** or **▼**, then **▶** to select.
 - Press **HOME** to go to the Home menu.

Manual search & store

You can manually search and store channels.

- 1 Turn on the WAC7500.
- 2 Press **HOME** .
- 3 Press **FM TUNER** .
 - ↳ The current frequency is displayed.
- 4 Press **▲▼** to change the frequency.
- 5 Press **MENU** .
- 6 Select **[Save to Preset]**.
- 7 Press **▲** or **▼**, then **▶** to select.
 - ↳ The frequency is stored under the selected preset number.
 - ↳ Press **HOME** to go to the Home menu.




Tip

- You can overwrite preset channel numbers with new frequencies.

Wirelessly stream music from a PC

You can wirelessly stream music to the WAC7500 from a connected PC, if you install Windows Media Player 11 on the PC (see 'Install Windows Media Player 11' on page 20) and configure the PC to share your music. (If Windows Media Player 11 is already installed on the PC, you can skip the installation section and continue with the configuration. For any other media players, refer to the instructions supplied with the player.)


Install Windows Media Player 11

- 1 On the PC, insert the supplied software CD.
↳ Installation starts.
↳ If installation does not start, click on the  icon in your Explorer program.
- 2 Follow the instructions on the PC to install **Windows Media Player 11**.

Configure a PC to share music

You can share music from a PC with the WAC7500. This chapter shows you how to configure the PC to share music.

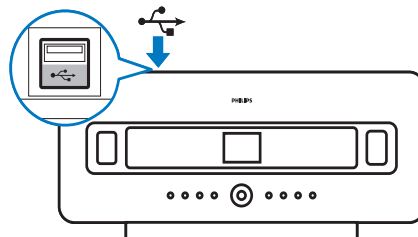
- 1 Follow the instructions to install Windows Media Player 11 (see 'Install Windows Media Player 11' on page 20).
- 2 On the PC, click **Start > Programs > Windows Media Player**.
- 3 In the Windows Media Player interface, right click on the **Library** pull-down menu at the top of the screen and select **Media sharing...**

- 4 In the **Media sharing...** pop-up window, select **Share my media**, then confirm with **OK**.
↳ When the WAC7500 is connected to your home network, the display shows the WAC7500 with an alert icon: 
- 5 Click on the WAC7500.
- 6 Select **Allow**, then confirm with **OK**.
- 7 On the WAC7500, press **HOME**.
- 8 Press **▲** or **▼**, then **▶** to select **[UPnP]**.
↳ The WAC7500 searches for the source, then displays the list of media servers.
- 9 Press **▲** or **▼**, then **▶** to select the PC name (the Windows Media Player adds an identifier after the PC name) and confirm.

Play from a flash memory USB device

You can play music from a USB device. You can also transfer the music library of the WAC7500 to a USB mass storage device.

- 1 Insert the USB plug of the USB device into the USB socket of the WAC7500.



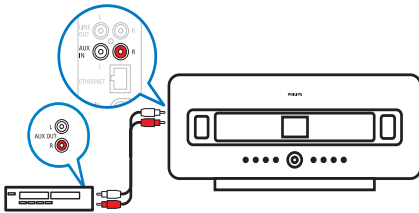
- 2 On the WAC7500, press **HOME**.
- 3 Press **▲** or **▼**, then **▶** to select **[Portable] > [USB]**.
↳ The display shows the USB device.
- 4 Press **▲** or **▼**, then **▶** to select the USB content,

- Press **HOME** to go to the Home menu.

Connect audio devices (AUX)

You can play music from an external appliance that is connected to the AUX input of the WAC7500.

- 1 Consult the user manual of the external appliance to connect the supplied audio cable to the audio output jack of the external appliance.
- 2 Connect the other end of the audio cable to the **AUX IN** jack of the WAC7500.



- 3 On the remote control of the WAC7500, press **HOME**.
- 4 Press **▲** or **▼**, then **▶** to select **[AUX]**.
- 5 Operate the controls of the external appliance to play music.

7 Play options

You can choose between various play options:

- Repeat play (see 'Repeat play' on page 22)
- Shuffle play (see 'Shuffle play' on page 22)
- Play by artist (see 'Play by artist' on page 22)
- Play by genre (see 'Play by genre' on page 22)
- Play from a playlist (see 'Play from a playlist' on page 23)

Repeat play

You can repeat one or all audio files of the current selection.

- 1 In play mode, press **REPEAT** to toggle the repeat function as follows:
 - **Repeat 1**
 - The current audio file is continuously repeated until another mode or setting is selected.
 - **Repeat all**
 - All audio files of the current selection are continuously repeated until another mode or setting is selected.
 - **Off** (default)

Shuffle play

You can play the audio files of the current selection in random order (shuffled).

- 1 During play, press **SHUFFLE** to toggle shuffle on and off.
 - ↳ When you turn shuffle on, the current selection of audio files is played in random order.

Play by artist

You can play all audio files of the same artist from the HD of the Philips Wireless Music Center.

- 1 When you play HD audio, press **SAME ARTIST**.

Play by genre

You can play all audio files of the same genre from the HD of the Philips Wireless Music Center.

- 1 When you play HD audio, press **SAME GENRE**.

Create a playlist

You can create up to 99 playlists on the hard disk of the connected Philips Wireless Music Center.

- 1 Press **HD** to enter HD mode.
- 2 Press **MENU** to enter the HD menu.
- 3 Press **▲** or **▼**, then **▶** to select **[Create Playlist]**.
 - ↳ A new playlist with a default album name, such as Playlist_001, is created.
 - ↳ Press **HOME** to go to the Home menu.

Add audio files to a playlist

This is how to navigate and select with the remote control:

- Press **▲** or **▼** to select a menu option.
- Press **▶** to confirm a selection.
 - Press **◀** to go back to the previous screen.
- Press **HOME** to go to the Home menu.

You can add up to 300 audio files to a playlist.

- 1 Turn on the WAC7500.
- 2 On the remote control, press **HD**.
- 3 Select an audio file.
- 4 Press **MENU** to enter the HD menu.
- 5 Select **[Add To Playlist]** and confirm.
- 6 Select playlist and confirm.
 - ↳ The audio file is added to the selected playlist.
 - ↳ Press **HOME** to go to the Home menu.

Play from a playlist

This is how to navigate and select with the remote control:

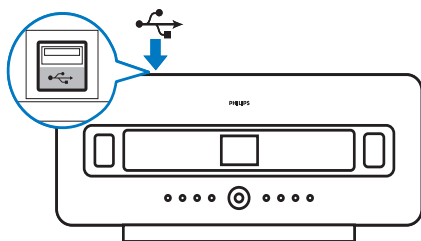
- Press **▲** or **▼** to select a menu option.
- Press **▶** to confirm a selection.
 - Press **◀** to go back to the previous screen.
- Press **HOME** to go to the Home menu.

- 1 Turn on the WAC7500.
- 2 On the remote control, press **HD**.
- 3 Press **MENU** to enter the HD menu.
- 4 Select **[Playlists]**.
- 5 Select the playlist.
- 6 Press **OK/▶||** to play.
 - To stop play, press **■**.
 - Press **HOME** to go to the Home menu.

8 Record from HD to USB

You can record music files from the HD (harddisk) of the WAC7500 to a flash memory USB device.

- 1 Insert the USB plug of the USB device into the USB socket of the WAC7500:



Use the remote control of the WAC7500 for the following steps:

- 2 Press **HD**.
- 3 Press **REC**.
- 4 Press **MARK/UNMARK** to select/deselect tracks. (By default the WAC7500 records all tracks of the HD when no tracks are marked.)
 - Press **MARK/UNMARK** for 2 seconds to select/deselect all tracks.
- 5 Press **REC** to start recording.
- 6 To stop recording, press **■**.

9 Alphanumeric search

You can search for specific audio files on the HD (harddisk) of the WAC7500.

- 1 Turn on the WAC7500.
- 2 Press **HD**.
↳ The display shows the available lists.
- 3 Press **▲** or **▼**, then **▶** to select the list.
- 4 Press **SEARCH**.
↳ The display shows a text box.
- 5 Press the alphanumeric buttons on the remote control to enter the search word.
- 6 Press **OK/▶||** to start the search.
↳ The WAC7500 shows the closest alphabetical match.
- 7 To stop the search, press **■**.
 - Press **HOME** to go to the Home menu.

10 Gracenote® CD information

Gracenote® CD Information

Gracenote MusicID® provides the set with CD track information (including album, artist, genre, track information) from its built-in database. It allows the recorded CD tracks to be properly categorized (for example, under Artists, Albums, Genres or All tracks) and be merged with the existing tracks in the hard disk.

Gracenote® Media Database

A CD database is embedded in every WAC7500 for quick look-up on track information. An update file that contains newly released CDs is available quarterly on www.club.philips.com for download.

Update Gracenote® Media Database

Use your PC to register your product on www.club.philips.com and go to "Show Upgrades & Support" page to download Gracenote® Media Database update. Note that the updates are posted quarterly and new updates are independent from old updates, i.e. a new update can be installed, even without the previous update.

11 Settings

Change Equalizer (EQ) settings

This is how to navigate and select with the remote control:

- Press **▲** or **▼** to select a menu option.
- Press **▶** to confirm a selection.
 - Press **◀** to go back to the previous screen.
- Press **HOME** to go to the Home menu.

You can adjust the audio sound with the following equalizer settings:

- **[Rock]**
- **[Pop]** (default)
- **[Jazz]**
- **[Neutral]**
- **[Techno]**
- **[Classical]**
- **[Treble/Bass]**

- 1 Turn on the WAC7500.
- 2 Press **MENU**.
- 3 Select **[Equalizer]** and confirm.
- 4 Select a menu option and confirm.
 - Press **HOME** to go to the Home menu.

Activate Smart EQ

- 1 Turn on the WAC7500.
- 2 Press **SMART EQUALIZER** to toggle between the options:
 - activate Smart EQ
 - deactivate Smart EQ
 - The Smart EQ function automatically selects equalizer settings according to the genre that is associated with the audio file.
 - If no genre is associated with the audio file, the default setting is Pop.

Adjust treble / bass

This is how to navigate and select with the remote control:

- Press **▲** or **▼** to select a menu option.
- Press **▶** to confirm a selection.
 - Press **◀** to go back to the previous screen.
- Press **HOME** to go to the Home menu.

- 1 Turn on the WAC7500.
- 2 Press **MENU**.
- 3 Select **[Settings]** and confirm.
- 4 Select **[Treble/Bass]** and confirm.
- 5 Select **[Treble]** or **[Bass]** and confirm.
- 6 Press **▲** or **▼** to adjust the setting and confirm.
 - To return to the Home menu, press **HOME**.

Set Dynamic Bass Boost (DBB)

You can choose from the following DBB settings:

- **[DBB1]**
- **[DBB2]**
- **[DBB3]**
- **[DBB OFF]** (default)

- 1 To toggle between the settings, press **DBB**.

Activate Incredible Surround sound

- 1 To activate the Incredible Surround sound feature, press **INCR.SURR.**
 - To deactivate the feature, press the button again.

Time settings

This chapter shows you how to change the time settings.

Synchronize with RDS radio station

RDS (Radio Data System) is a service that allows FM stations to send additional information along with the FM radio signal. Automatic time synchronization is one of the RDS features.

- 1 Ensure that the radio station you select for synchronization has RDS.
- 2 Turn on the WAC7500.
- 3 Press **MENU** .
- 4 Press **▲** or **▼**, then **▶** to select **[Settings]** > **[Time]** > **[Auto Time Sync]**.
- 5 Press **▲** or **▼**, then **▶** to select the RDS station.
- 6 Press **HOME** to go to the Home menu.

Set the time manually

- 1 Ensure that the WAC7500 is turned on.
- 2 Press **MENU** .
- 3 Press **▲** or **▼**, then **▶** to select **[Settings]** > **[Time]** > **[Set Time]**.
- 4 Press **▲** or **▼** to adjust the setting and confirm with **OK** .
- 5 Press **◀** to go back to the previous screen.
 - Press **HOME** to go to the Home menu.



Tip

- You can also press the numeric buttons (0-9) and enter the time directly.

Set the time format

- 1 Turn on the WAC7500.
- 2 Press **MENU** .

- 3 Press **▲** or **▼**, then **▶** to select **[Settings]** > **[Time]** > **[Time Format]**.
- 4 Press **▲** or **▼**, then **▶** to select format.
- 5 Press **◀** to go back to the previous screen.
 - Press **HOME** to go to the Home menu.

Set standby timer

You can select a set time period after which the WAC7500 automatically switches to standby. The timer offers the following options in minutes:

- **[Sleep 15]**
 - **[Sleep 30]**
 - **[Sleep 45]**
 - **[Sleep 60]**
 - **[Sleep 90]**
 - **[Sleep 120]**
 - **[Sleep off]**
- 1 Turn on the WAC7500.
 - 2 Press **SNOOZE** one or more times to select a time period.
 - ↳ When you set the timer, the display shows the sleep icon:
 - ↳ To view the remaining countdown time to standby, press **SNOOZE** anytime.

Alarm

You can set the alarm feature of the WAC7500 and choose from different repeat modes. This is how to navigate and select with the remote control:

- Press **▲** or **▼** to select a menu option.
- Press **▶** to confirm a selection.
 - Press **◀** to go back to the previous screen.
- Press **HOME** to go to the Home menu.

- 1 Press **MENU** to enter the menu screen.
- 2 Select **[Settings]** > **[Alarm]**.

- 3 Select **[On]** to activate the alarm and enter the alarm settings.
 - Select **[Off]** (default) to deactivate the alarm.
- 4 Press **▲** or **▼** to adjust the setting, then press **▶** to confirm the adjustment.
- 5 Press **OK** to confirm the alarm time settings.
- 6 Press **▲** or **▼**, then **▶** to select the repeat mode **[Once]** or **[Daily]**.
 - ↳ The display briefly shows **[Alarm on]** and the alarm icon remains visible while the alarm feature is activated.

Change language

You can change the language that you have set during the first-time installation.

- 1 Turn on the WAC7500.
- 2 Press **MENU**.
- 3 Select **[Settings]** > **[Language]**.
- 4 Press **▲** or **▼**, then **▶** to select the language.
- 5 Press **HOME** to go to the Home menu.

Maintenance

This chapter tells you how to care for your WAC7500.

Cleaning



Note

- Avoid moisture and abrasion.

- 1 Clean the WAC7500 only with a soft dry cloth.

Update

- When the WAC7500 is connected to a PC, you can download new firmware updates.

Update through PC connection

This chapter shows you how to install the WADM (Philips Wireless Audio Device Manager) software. The WADM is necessary to search and download software updates for the WAC7500.

- 1 On the PC, visit the www.philips.com/welcome.
- 2 Download the latest software for the WAC7500 to the harddisk of the PC.
- 3 Turn on the WAC7500.
- 4 Ensure that the WAC7500 is connected to the network of the PC.
- 5 Insert the supplied software CD into the PC.
- 6 Follow the instructions on the PC to install WADM.
- 7 When the security alert message (Microsoft Windows Firewall) pops up, press 'Unblock' to allow the WADM application to run on the PC.
 - ↳ The firewall is still effective and only allows the WADM to run.
- 8 On the WADM screen, select **Device Configuration**.
- 9 In the Device Configuration screen, select **Firmware upgrade** and click **OK**.
- 10 Click **Browse** to locate the software image file that you saved on the harddisk of the PC.
- 11 Click **OK** to start the update.
 - ↳ The software update progress is shown.
 - ↳ When the software installation is complete, the WAC7500 restarts.



Tip

- You can also consult the user manual of the PC and manually add the WADM application to your list of programs that are safe to run.

Restore the default settings

You can restore the default settings (including network settings) of the WAC7500.

- 1 Turn on the WAC7500.
- 2 Press **HOME** to go to the Home menu.
- 3 Press **MENU** to enter the menu display.
- 4 Press **▲** or **▼**, then **▶** to select **[Settings]** > **[Restore settings]**.
- 5 Press **▶**.
- 6 Press **▶** to select **[Yes]**.
 - ↳ The WAC7500 restarts when the factory settings are restored.
 - ↳ The language selection display is shown.



Tip

- You can restore the default settings without losing the audio files on the harddisk of a connected PC or Center.

12 Add a Philips Wireless Music Station (sold separately)

You can add up to 5 Philips Wireless Music Stations (sold separately) and expand your wireless music to other locations in your home.

Add a Philips Wireless Music Station to the WAC7500

This connection creates a wireless of the Philips Wireless Music Station to the home network that the WAC7500 connects to:

- 1 Place the WAC7500 and the Philips Wireless Music Station next to each other.
- 2 Follow the instructions of the Philips Wireless Music Station to connect the Station to the power supply.
- 3 Turn on the WAC7500.
- 4 Turn on the Philips Wireless Music Station.
 - If you turn on the Philips Wireless Music Station for the first time, follow the instructions of the Philips Wireless Music Station to select the language.
 - The devices are ready for the connection setup.

Connection setup:

- 1 On the remote control of the WAC7500, press **HD**.
- 2 Press **MENU** to enter the menu screen.
- 3 Press **▲** or **▼**, then **▶** to select **[Station Mgmt.]**.
- 4 Press **▲** or **▼**, then **▶** to select **[Add New Station]**.
 - ↳ The WAC7500 searches for Philips Wireless Music Stations.

- 5 Follow the instructions of the Philips Wireless Music Station to enter the 'Installation Mode' on the Station. (The Philips Wireless Music Station must be in 'Installation Mode' so that the WAC7500 can find it.)
- 6 When the display of the WAC7500 shows that the Philips Wireless Music Station is found, press **■**.
 - ↳ The WAC7500 stops to search.
 - ↳ You can relocate the devices.



Note

- Thick walls and metal obstacles between the devices can impair the wireless connection.

Broadcast music to Philips Wireless Music Stations



Note

- This feature requires that you first connect the WAC7500 to a Philips Wireless Music Station (sold separately) (see 'Add a Philips Wireless Music Station (sold separately)' on page 30).

- 1 Turn on the Philips Wireless Music Station.
- 2 Turn on the WAC7500.
- 3 While playing music, press **MUSIC BROADCAST**.
 - ↳ After a short delay, all connected Philips Wireless Music Stations play the music you broadcast from the WAC7500.
 - ↳ To stop the broadcast on the WAC7500, press **■**.
 - ↳ To stop the broadcast on the connected Philips Wireless Music Station, press **■**.

Music Follows Me



Note

- This feature requires that you first connect the WAC7500 to a Philips Wireless Music Station (sold separately) (see 'Add a Philips Wireless Music Station (sold separately)' on page 30).

As you move around at home, let the music move with you between the WAC7500 and one or more connected Philips Wireless Music Stations. The unit where the music is playing is the source unit. The unit to which you want to move the music is the destination unit.

- 1 Ensure that source unit and the destination unit are turned on.
- 2 On the source unit, press **MUSIC FOLLOWS ME**.
 - ↳ The displays of the source unit and the destination unit show an icon to indicate that the feature is activated.
- 3 On the destination unit, press **MUSIC FOLLOWS ME**.
 - ↳ The icon disappears from the displays.
 - ↳ The music play simultaneously stops on the source unit and starts on the destination unit.
 - ↳ To stop the music play, press ■ on the unit where the music plays.

Delete a Philips Wireless Music Station from the WAC7500

- 1 On the remote control of the WAC7500, press **HD**.
- 2 Press **MENU**.
- 3 Press ▲ or ▼, then ► to select **[Station Mgmt]**.
- 4 Press ▲ or ▼, then ► to select **[Delete Station]**.
 - ↳ The display shows all the Philips Wireless Music Stations that are connected to the network of the WAC7500.

- 5 Press ▲ or ▼, then ► to select the Philips Wireless Music Station you want to delete.
- 6 Press ▲ or ▼, then ► to select **[Yes]**.
 - ↳ The Philips Wireless Music Station is deleted from the network of the WAC7500.

Relocate a connected WAC7500 or Philips Wireless Music Station

- 1 Turn off (or switch to Eco Standby) the device you want to relocate.
- 2 Disconnect the device from the power supply.
- 3 Reconnect the device to the power supply in the new location.
 - ↳ The Wi-Fi connection recovers automatically.



Note

- Thick walls and metal obstacles between the devices can impair the wireless connection.

13 Technical data

General

AC Power	Voltage information is printed on the back or the underside of the WAC7500.
Dimensions (w x h x d)	387 x 272 x 128 mm
Weight (net)	Main unit: ~ 3.6 kg

Power consumption

On	< 25 W
Standby (active)	< 20 W
ECO (passive) standby	< 1 W

Amplifier

Output power	2 x 7.5 + 15 W (RMS)
Frequency response	60 - 20,000 Hz (-3 dB)
Signal to noise ratio	72 dBA (IEC)

Speakers - tweeter

Power	20 W (RMS) / 30 W (MPO)
Frequency response	1 kHz - 20 kHz
Sensitivity	76 dB / m / W
Impedance	6 Ω
Dimensions (w x h)	72 x 42 mm

Speakers - mid range

Power	20 W (RMS) / 30 W (MPO)
Frequency response	130 Hz - 5 kHz
Sensitivity	76 dB / m / W
Impedance	6 Ω
Dimensions (w x h)	75 x 75 mm

Speakers - sub-woofer

Power	50 W (RMS) / 75 W (MPO)
Frequency response	75 Hz - 500 Hz
Sensitivity	83 dB / m / W
Impedance	12 Ω
Dimensions (Ø)	125 mm

Headphone

Impedance	16 - 150 Ω
-----------	-------------------

Input sensitivity

AUX IN	500 mV
--------	--------

Wired (LAN / Ethernet)

Wired standard	802.3 / 802.3 u
Speed	10 / 100 MBit/s
Mode	half / full duplex
Crossover detection (Auto MDIX)	Yes (Auto MDIX)

CD player

Frequency range	60 - 20,000 Hz (-3 dB)
Signal to noise ratio	75 dBA (IEC)
M4A (AAC) bit rate	16 - 320 kbps, CBR / VBR
MP3 bit rate	32 - 320 kbps, CBR / VBR
WMA bit rate	up to 192 kbps, CBR / VBR
Sampling frequencies	32, 44.1, 48 kHz

HD player

Frequency range	60 - 20,000 Hz (-3 dB)
Signal to noise ratio	72 dBA (IEC)
MPEG 1 Layer 3 (MP3-CD)	MPEG AUDIO
MP3-CD bit rate	32 - 320 kbps, CBR / VBR
WMA bit rate	up to 160 kbps, CBR / VBR
Sampling frequencies	32, 44.1, 48 kHz
HD storage capacity	80 GB (actual formatted capacity will be less)

USB player

USB	12 Mbps, V1.1 (supports MP3, WMA and M4A files)
USB class	MSC, MTP
Number of tracks / titles	maximum 9999

Specifications and external appearance are subject to change without notice.

- Adapter
 - Ethernet enabled, plus Ethernet cable (for wired connection)
 - Wireless network 802.11 b/g (for wireless connection)
- 500 MB free hard disk space

Supplied accessories

- Remote control
- 2 AAA batteries
- AC power cable
- FM radio antenna
- Software CD-Rom

PC connection requirements

The minimum requirements for PC connections are:

- Windows 2000 SP4 (or above) / XP SP2 / Vista
- Pentium III 500 MHz processor or higher
- 256 MB RAM
- CD-ROM drive

14 Troubleshooting

Caution

- Never try to repair the system yourself as this will invalidate the warranty.
- Do not open the system as there is a risk of electric shock.
- If a fault occurs, first check the FAQ points, then consult your dealer or Philips for help.

The WAC7500 is connected to a home network and music skips during play (from any source including HD), what do I do?

- Ensure that the network router is turned on.
- Ensure that the network settings are correct for the selected network (see section 'Connect to a home network').

I cannot hear any sound or the sound is poor, what do I do?

- Press **+VOL** —to increase the volume.
- Press the **MUTE** button again to reactivate the sound output.

The radio reception is poor, what do I do?

- Adjust the antenna for better reception.
- Increase the distance between the WAC7500 and TV or VCR devices.

Is there a maximum distance of transmission between a Philips Wireless Music / Micro Center and the WAC7500 for effective streaming?

Yes. The maximum distance of Wi-Fi transmission is 250m measured in open spaces. However, in a home environment, where solid obstacles such as walls and doors are present, the effective transmission distance is reduced to 50-100m. Reposition the devices if you experience transmission problems.

How do I avoid Wi-Fi interferences from other devices that operate in the same (2.4GHz) frequency spectrum, such as Dect phones or bluetooth devices?

- Move the WAC7500 at least 3m away from such devices.

- Use a WEP/WPA encryption key when you create the wireless connection your PC / home network.
- Change the operating channel on the interfering devices.
- Turn the devices in different directions to minimize interference.

The wireless firmware update failed, what do I do?

- 1 Ensure that the PC is connected to the Internet.
- 2 Use an Ethernet cable (sold separately) to connect the WAC7500 to the PC.
- 3 On the PC, launch the WADM to update the firmware.

I have done all the steps described to connect the WAC7500 to my wireless home network, but the WAC7500 is still not connected.

- On the WAC7500, press **MENU** . Select **[Information] > [Wireless] > [Wireless Mode]**. Check that the WAC7500 has been changed from **Ad hoc mode** to **Infrastructure mode**. Also check that the SSID, IP address, WEP key, or WPA key matches the setup of your wireless home network.
- Try to change the SSID on your router to a more unique name to ensure that it is different from the SSID that your neighbors use for their router.
- The WAC7500 supports wireless and wired connection at the same time. There is a chance that your wireless IP address and your wired IP address are on the same subnet. This will confuse the device. Consider changing the DHCP range of your wireless router so that the wireless IP received by the device is on a different subnet from its wired IP address.
- Try to change the channel of your home network settings on the router.
- On your router, consider using a WPA key instead of a WEP key. When you use a WEP as your encryption key, set all 4 keys to be the same.

- Ensure that the turbo mode of your wireless router is switched off, if your router has this function.

The wireless firmware update failed, what do I do?

- 1** Ensure that the PC is connected to the Internet.
- 2** Use an Ethernet cable (sold separately) to connect the WAC7500 to the PC.
- 3** On the PC, launch the WADM on the PC to update the firmware.

I have problems installing WADM or launching WADM after installation, what do I do?

- Ensure that the operating system of the PC meets the requirements.
- Ensure that the PC is virus-free.


Some files on the USB device are not displayed, what do I do?

- Check if the number of folders exceeds 99 or the number of titles exceeds 999.
- Only completely recorded MP3/WMA files can be found and played. Check if the file has been recorded completely.
- DRM-protected WMA files cannot be played.

The remote control does not function properly, what do I do?

- Reduce the distance between the remote control and the WAC7500.
- Insert the batteries with correct polarity (+/- as indicated inside the battery compartment).
- Replace the batteries.
- Point the remote control directly at the infrared sensor.

The screen of the WAC7500 is stuck in a menu or shows no response for a long period of time (2-5 minutes), what do I do?

- Press .
- If the problem persists, restart the power (disconnect and reconnect the power plug) to reset the WAC7500.

'No Disc' / 'Cannot read CD' is displayed, what do I do?

- Insert a suitable disc.

- Check if the disc is inserted with the graphics side (label) facing up.
- Wait for the condensation moisture on the lens to clear.
- Replace or clean the disc.
- Use a finalized CD-RW or CD-R.

15 Glossary

A

A (Amp/Ampere)

The Ampere (abbreviations: Amp or A) is the unit of electric current, or amount of electric charge per second.

AAC (Advanced Audio Coding)

An audio compression scheme defined as part of the MPEG-2 standard (also known as MPEG-2 AAC or MPEG-2 NBC, or Not Backwards Compatible). It offers better sound and a compression ratio that is superior by roughly 30 percent compared to the MPEG-1 MP3 format.

AC (alternating current)

An alternating current is an electrical current whose magnitude and direction vary cyclically, as opposed to DC (direct current), whose direction remains constant. The usual waveform of an AC power circuit is a sine wave, as this results in the most efficient transmission of energy. However certain applications use different waveforms, such as triangular or square waves.

Album art

Album art is a feature of the WAC7500 that displays the artwork (cover picture) of a music album. This display enables the user to quickly identify a music album. The artwork files for music albums can be downloaded from the Internet.

Amplifier

A device, either a single stage or a large scale circuit with multiple stages for creating gain, i.e. it makes small signals larger.

Analogue audio

Sound that has not been turned into numbers. Analogue sound is available when you use the AUDIO LEFT/RIGHT. These red and white jacks send audio through two channels, the left and right.

Antenna

A device, such as a rod or wire, which picks up a received radio frequency signal or radiates a transmitted RF signal.

Audio output

High-level (speaker) or line-level (RCA) signals sent from one system component to another; or the high-level signal from an amplifier to the system speakers.

AUX

Auxiliary input that allows you to connect portable audio devices.

B

Bass

The lowest three octaves of the audio band. Low bass is the bottom octave (20-40Hz), mid-bass is the middle octave (40-80Hz), and upper bass is the 80-160Hz octave.

BestBuy®

BestBuy® is a membership-based digital music service that allows listeners to subscribe to music through the Internet at a monthly rate, rather than to purchase the music.

Bit / bits

A bit is a binary digit, taking a value of either 0 or 1. For example, the number 10010111 is 8 bits long.

Bit rate

Bit rate is the number of bits that are conveyed or processed per unit of time. The bit rate is usually measured in some multiple of bits per second (kilobits per second: kbps). The term bit rate is a synonym for data transfer rate (or simply data rate).

Bluetooth®

Bluetooth® is a short-range wireless protocol that is meant to allow mobile devices to share information and applications without the worry of cables or interface incompatibilities. The name refers to a Viking King who unified Denmark. Operates at 2.4 GHz. For more information, see bluetooth.com.

C

CBR (constant bit rate)

With CBR the encoder spends the same amount of bits on each frame, regardless of how much it may really need. Disadvantage of CBR: Bits are wasted in case of absolute blackness of a picture or complete silence in an audio frame. And pictures or audio frames with a lot of elements may need those bits.

CD (Compact Disc)

Format developed by Phillips, Sony, and Pioneer for conveying music and data. CDs record information by deforming the inner metal foil on the disc with tiny micro pits burned in by a laser.

CDDB

A centralized database of CDs, CD tracks, and artists on the Web, now known as Gracenote. The audio player or burner program can log on to CDDB. It uploads the ID of the CD being played, and then downloads the title, artist, and track list.

Coaxial

A single copper conductor, surrounded with a layer of insulation, covered by a surrounding copper shield and finally, an insulating jacket. An unbalanced transmission line with constant impedance. In audio, this type is commonly used for low level, line signals terminated in RCA connectors.

Compression

In audio terms, this is a process of temporarily or permanently reducing audio data for more efficient storage or transmission. A temporary reduction in file size is called 'non-lossy' compression, and no information is lost. A permanent reduction in file size (such as with MP3 files) is called 'lossy' compression, and involves discarding unnecessary information which is irretrievably lost.

D

dB (Decibel)

A unit of measure used to express relative difference in power or intensity of sound.

DC (direct current)

Direct current or continuous current is the constant flow of electric charge. This is typically in a conductor such as a wire. In direct current, the electric charges flow in the same direction, distinguishing it from AC (alternating current).

DHCP

DHCP stands for Dynamic Host Configuration Protocol. It is a protocol for assigning dynamic IP addresses to devices on a network.

Digital

A method to encode information using a binary code of 0s and 1s. Many wireless phones and networks use digital technology.

Digital Audio

Digital Audio is a sound signal that has been converted into numerical values. Digital sound can be transmitted through multiple channels. Analog sound can only be transmitted through two channels.

DTS

Digital Theatre Systems. A surround sound system for providing 5.1 channels of discrete digital audio in consumer electronics products and software content. It is not developed by Dolby Digital.

Duplex (half/full)

- Full duplex is the ability to send and receive data simultaneously. Duplex is synonymous with full duplex. Example: when a modem operates in full-duplex mode, it can transmit data in two directions simultaneously. In half-duplex mode it can transmit data in two directions, but not simultaneously.

DVD±R

Each time you store a recording or a file on a DVD±R, the space that it takes up can never be

used again. You can erase the recording or file, but you cannot store anything over that space. Once the disc is full, you cannot store items on the disc.

DVD±RW

Each time you store a recording or a file on a DVD±RW, the space can be re-used when you delete it. You can re-use the same disc repeatedly.

DVI

A digital interface standard created by the Digital Display Working Group (DDWG) to convert analog into digital signals to accommodate both analog and digital monitors.

E

EasyLink

Philips EasyLink complies to the HDMI CEC industry standard protocol to share functionalities between this unit and its connected devices. This feature is only available if you connect this unit to a HDMI compliant device with a HDMI cable.

Eco (Eco Standby)

Eco Standby is the most 'economic' mode of the WAC7500 and consumes less than 1W. It is 'economic' and environmentally friendly to use this mode during longer times of non-usage of the WAC7500.

Encryption key

An encryption key is an alphanumeric series that enables data to be encrypted and then decrypted so it can be safely shared among members of a network.

EQ (Equalizer)

A class of electronic filter circuits designed to augment or adjust electronic or acoustic systems. Equalizers can be fixed or adjustable, active or passive. Many equalizers divide the spectrum into 3 to 12 bands. This allows each section to be either increased or decreased in amplitude without changing the response of the rest.

F

Fidelity

A term used to describe the accuracy of recording, reproduction, or general quality of audio processing. "High Fidelity" (Hi-Fi) is the goal of every designer.

Finalize

To make a DVD±R play correctly on any WAC7500, you must finalize it. After you finalize the DVD±R, you cannot store or edit on it.

FM (Frequency Modulation)

In radio broadcasting: a method of modulation in which the frequency of the carrier voltage is varied with the frequency of the modulation voltage.

Frequency

The property or condition of occurring at frequent intervals. In sound, this simply refers to the regular occurrence of compression and rarefaction of air that we experience as sound.

Frequency Response

Is the range of frequencies that a speaker reproduces, lowest frequency to the highest. While the optimal normal is 20-20,000 Hz (Hertz), the range of human hearing for individuals is often much more restricted. A good full-range speaker system however, reproduces as much of this range as possible to cover all variations. Individual drivers are limited to reproduce only that part of the spectrum for which they were made, so their response is limited, but still a necessary point to consider when designing a complete sound system.

FullSound

FullSound™ is an innovative technology designed by Philips. FullSound™ faithfully restores sonic details to compressed music, enhancing it to provide a full sound experience without any distortion.

H

HDCP

High-bandwidth Digital Content Protection. This is a specification that provides a secure transmission of digital contents between different devices (to prevent unauthorized copyright.)

HDMI

High-Definition Multimedia Interface is a high-speed digital interface that can transmit uncompressed high definition video and digital multichannel audio. It delivers high quality picture and sound quality, completely free from noise. HDMI is fully backward-compatible with DVI.

As required by the HDMI standard, connecting to HDMI or DVI products without HDCP (High-bandwidth Digital Content Protection) will result in no Video or Audio output.

Hi-Fi (High Fidelity)

A method of sound reproduction that emphasizes the highest possible adherence to the exact character of the original sound. This is a principal that must be paramount in every stage of the recording, transportation, and recreation of the signal to be fully operational. It is usually the listener's equipment wherein this objective is most seriously compromised.

Hz (Hertz)

Cycles per second, named after Heinrich Hertz.

I

i.LINK/DV/FireWire/IEEE 1394

This WAC7500 is equipped with an i.LINK (also known as DV, FireWire, or IEEE 1394) jack. When you connect a DV-format (DVC-SD) camcorder through a single DV cable, you can transmit audio and video. You can also control the camcorder through this WAC7500. You cannot connect more than one DV camcorder at a time to this WAC7500. You cannot control this WAC7500 through devices connected to the i.LINK jack.

Impedance

The resistance to the flow of an electric current in a circuit. This is effectively the electrical load that a loudspeaker presents to the amplifier which drives it and is measured in ohms.

Incredible Surround Sound (Incr.Surr.)

An improved system that creates realistic, three-dimensional sound fields. These sound fields are usually achieved with multiple speakers that are arranged around the listener.

Input sensitivity

SPL (sound pressure level) a speaker produces, given one watt of power, measured from a one-meter distance at a typical input frequency (usually 1kHz unless otherwise noted on the speaker).

Interface

A device or protocol which facilitates the linking of any two devices or systems; or when used as a verb ('to interface'), the process of linking.

IP address

An IP (Internet Protocol) address is a unique computer address that enables electronic devices to communicate with and identify each other.

K

Kbps

Kilobits per second. A digital-data-rate measurement system which is often used with highly compressed formats such as AAC, DAB, MP3 etc. The higher the amount, the better the quality generally is.

kHz (kilo Hertz)

1000Hz or 1000 cycles per second.

L

LCD (Liquid Crystal Display)

Probably the most common way to show visual information on non-computer electronic equipment.

LivingSound

LivingSound™ is a sound processing algorithm provided by Philips that offers spatial enhancements and the listener perceives the sound as though the loudspeakers were located a greater than actual distance apart from one another.

Lossless compression

A system for reducing the number of data bits (density) in a musical signal without corrupting the original.

M**M4A**

The audio file format used by Apple in their iTunes Music Store often appears on your system with the '.m4a' filename extension. M4A can produce better audio quality than MP3 using less physical space for the files.

MHz (Mega Hertz)

One million cycles per second.

Midrange

The middle three octaves (more or less) of the audio band, where the ear is most sensitive, usually between 160Hz-3kHz.

MMC

MultimediaCard. A type of memory card with a flash memory.

Mono (monaural)

The operation of an amplifier in one channel for both input and output. Can refer to an amplifier with only one channel of amplification or operating in bridged mode. For low-frequency amplification applications, it provides better phase coherence and less distortion than stereo operation.

MP3

A file format with a sound data compression system. MP3 is the abbreviation of Motion Picture Experts Group 1 (or MPEG-1) Audio Layer 3. With the MP3 format, one CD-R or CD-RW can contain about 10 times more data than a regular CD.

MP3

A file format with a sound data compression system. MP3 is the abbreviation of Motion Picture Experts Group 1 (or MPEG-1) Audio Layer 3. With the MP3 format, one CD-R or CD-RW can contain about 10 times more data than a regular CD.

MPEG

Motion Picture Experts Group. A collection of compression systems for digital audio and video.

Mute

A control found on receivers, and some mixers or signal processing units that silences (mutes) a signal path, or output.

O**Ohm**

Measure of resistance to current (impedance). The lower the impedance of a speaker, the harder it is to drive.

P**PBC**

Playback Control. A system where you navigate through a Video CD/SuperVCD with on-screen menus that are recorded onto the disc. You can enjoy interactive playback and search.

PCM (Pulse Code Modulation)

Pioneering form of digital recording.

Proxy server

A computer network service that allows clients to make indirect network connections to other network services.

R**RDS (Radio Data System)**

RDS tuners can automatically tune in stations according to the types of music (or talk) they broadcast. RDS also enables a receiver to display text messages and even graphics (usually call letters and format information) that many

FM stations include on a sub-carrier signal within their normal broadcast signal. Some RDS equipped tuners can even override with traffic alerts or emergency broadcasts, during playback of other media - CD MD, or cassette. There are other useful features too, many of which are offered by the growing number of RDS stations.

Region code

A system that allows discs to be played only in the region designated. This unit only plays discs that have compatible region codes. You can find the region code of your unit on the product label. Some discs are compatible with more than one region (or ALL regions.)

RF (radio frequency)

An alternating current or voltage with a frequency (or carrier wave) above about 100kHz. It is called radio frequency because these frequencies have a capacity to be radiated as electromagnetic waves by radio (and television) stations.

RGB signals

RGB signals are the three video signals, Red, Green and Blue, which make up a high quality picture.

Rhapsody®

Rhapsody® is an on-line music service that offers streaming on-demand access to its library of digital music.

Rip (ripping)

Using a software program that "grabs" digital audio from a compact disc and transfers it to a computer hard drive. The integrity of the data is preserved, because the signal does not pass through the computer sound card, and need not be converted to an analog format. The digital-to-digital transfer creates a WAV file that can then be converted into an MP3 file.

RMS (Root Mean Square)

A formula that provides a reasonably accurate means to measure and compare continuous AC power. The use of this measure is preferred when matching system components, like amplifiers and receivers.

S

S-VHS signals

S-VHS signals are separate Y/C video signals from the S-VHS and Hi-8 recording standards. The luminance signals Y (black and white) and chrominance signals C (color) are recorded separately on the tape. This provides the better picture quality than with standard video (VHS and 8mm) where the Y/C signals are combined to provide only one video signal.

S/PDIF (SPDIF) (Sony/Philips Digital Interface)

A standard audio-file transfer-format that was developed jointly by Sony and Philips. S/PDIF allows the transfer of digital audio signals from one device to another; without the need to convert first to analog. This prevents the quality of the digital signal degrading during transfer to analog.

Sampling rate

The precision with which a digital file describes the analog sound it represents. Basically, a lower rate produces files that sound worse and take up less drive space than those with a higher rate. CDs have a sampling rate of 44.1kHz, and DAT machines have a sampling rate of 48kHz. MiniDisc player/recorders with a built-in sampling rate converter can handle both rates.

SD

Secure Digital. A type of memory card with a flash memory.

Sensitivity

Volume that a speaker offers for a specific voltage input, expressed in decibels per watt (dB/W).

Shuffle

A feature that plays audio files (tracks) in random order.

Signal to noise ratio

Represents the difference between the level of the audio signal, and any interference. The larger the figure, the purer the sound.

SPL (sound pressure level)

An acoustic measurement of sound energy. 1 dB SPL is the smallest increment in sound level to which the average human is sensitive. Theoretically, 0 dB SPL is the threshold of human hearing while approximately 120 dB is the threshold of pain.

Stereo

Literally means solid. Usually taken to refer to two channel stereo, though developments in digital audio facilitate multichannel stereo.

Streaming

A technique for transferring data such that it can be processed as a steady and continuous stream. Streaming technologies are often used on the Internet because many users do not have fast enough access to download large multimedia files quickly, so the client browser or plug-in can start displaying the data before the entire file has been transmitted.

Subwoofer

The extra-low frequency drive-unit (loudspeaker) that can be used to augment both stereo and surround system.

SuperPlay

SuperPlay™ is a special feature of the WAC7500, which enables the listener to play all the music under a top-level library category, such as artists or albums, without having to select playlist items.

SuperScroll

SuperScroll™ is a navigation feature of the double-action search keys of the WAC7500. SuperScroll™ allows easy speed control when scrolling through large libraries to swiftly find items within large libraries. Longer press of the button results in faster scroll speed.

Surround

A system that creates realistic, three-dimensional sound fields. It is usually achieved with multiple speakers that are arranged around the listener.

T**Treble**

High frequencies at the top end of the audio band i.e. above 3kHz.

Tweeter

The drive unit (loudspeaker) that reproduces high frequency sounds.

U**UPnP (Universal Plug and Play)**

Universal Plug and Play is a networking architecture developed by a consortium of companies to ensure easy connectivity between products from different vendors. UPnP devices should be able to connect to a network automatically, handling identification and other processes on the fly. The standards developed by the UPnP Forum are media-, platform-, and device-independent.

V**VBR (variable bit rate)**

With VBR, the encoder takes as much bits as it needs. So black pictures get few bits and complex pictures get as much as they need. While this provides the best quality the final size cannot be predicted at all.

VGA

A common standard graphics display system for personal computers.

VIDEO OUT socket

Yellow socket that sends the DVD picture video to a TV.

Volume

Volume is the most common word used to specify the control of relative loudness of sounds. It also pertains to the function on many electronic devices that is used to control the loudness.

W

W (wattage)

A measurement of power. In speakers, wattage is a term that indicates power-handling characteristics in dealing with electrical voltage inputs from the amplifier.

WAP (Wireless Application Protocol)

Global protocol used in some wireless devices that allows the user to view and interact with data services. Generally used as a means to view Internet web pages using the limited transmission capacity and small display screens of portable wireless devices.

WAV

A format for sound files developed jointly by Microsoft and IBM. Built into Windows 95 to XP, which made it the de facto standard for sound on PCs. WAV sound files end with a '.wav' extension and works with nearly all Windows applications that support sound.

WEP (Wired Equivalent Privacy)

All 802.11b (Wi-Fi / wireless) networks use WEP as their basic security protocol. WEP secures data transmissions using 64-bit or 128-bit encryption; however, it does not offer complete security and is usually used in conjunction with other security measures such as EAP.

Wi-Fi

Wi-Fi (Wireless Fidelity) is a wireless technology brand owned by the Wi-Fi Alliance intended to improve the interoperability of wireless local area network products based on the IEEE 802.11 standards. Common applications for Wi-Fi include Internet and VoIP phone access, gaming, and network connectivity for consumer electronics such as televisions, DVD players, and digital cameras.

Wireless

Telecommunications using electromagnetic waves rather than wires or cable to transmit information. Wireless communication can be used for free-ranging mobile systems such as cell phones and global positioning systems

(GPS), which use satellite technology. Wireless systems can also be fixed, such as LANs that provide wireless communications within a limited area (such as an office), or wireless peripherals such as mice and keyboards.

WMA

Windows Media™ Audio. Refers to an audio compression technology developed by Microsoft Corporation. WMA data can be encoded with Windows Media player version 9 or Windows Media player for Windows XP. Files are recognized by their file extension '.wma.'

WMA (Windows Media Audio)

An audio format owned by Microsoft, is a part of Microsoft Windows Media technology. Includes Microsoft Digital Rights Management tools, Windows Media Video encoding technology, and Windows Media Audio encoding technology.

WMV

Windows Media Video. Refers to a video compression technology developed by Microsoft Corporation. WMV content can be encoded by using Windows Media® Encoder 9 series. Files are recognised by their file extension '.wmv'.

WPA / WPA2 (Wi-Fi Protected Access)

A Wi-Fi standard that was designed to improve upon the security features of WEP. The technology is designed to work with existing Wi-Fi products that have been enabled with WEP (i.e. as a software upgrade to existing hardware), but the technology includes two improvements over WEP.



Gracenote® End User License Agreement
Version 20061005

This application or device contains software from Gracenote, Inc. of Emeryville, California ("Gracenote"). The software from Gracenote

(the "Gracenote Software") enables this application to perform disc and/or file identification and obtain music-related information, including name, artist, track, and title information ("Gracenote Data") from online servers or embedded databases (collectively, "Gracenote Servers") and to perform other functions. You may use Gracenote Data only by means of the intended End-User functions of this application or device. You agree that you will use Gracenote Data, the Gracenote Software, and Gracenote Servers for your own personal non-commercial use only. You agree not to assign, copy, transfer, or transmit the Gracenote Software or any Gracenote Data to any third party. YOU AGREE NOT TO USE OR EXPLOIT GRACENOTE DATA, THE GRACENOTE SOFTWARE, OR GRACENOTE SERVERS, EXCEPT AS EXPRESSLY PERMITTED HEREIN.

You agree that your non-exclusive license to use the Gracenote Data, the Gracenote Software, and Gracenote Servers will terminate if you violate these restrictions. If your license terminates, you agree to cease any and all use of the Gracenote Data, the Gracenote Software, and Gracenote Servers. Gracenote reserves all rights in Gracenote Data, the Gracenote Software, and the Gracenote Servers, including all ownership rights. Under no circumstances will Gracenote become liable for any payment to you for any information that you provide. You agree that Gracenote, Inc. may enforce its rights under this Agreement against you directly in its own name.

The Gracenote service uses a unique identifier to track queries for statistical purposes. The purpose of a randomly assigned numeric identifier is to allow the Gracenote service to count queries without knowing anything about who you are. For more information, see the web page for the Gracenote Privacy Policy for the Gracenote service.

The Gracenote Software and each item of Gracenote Data are licensed to you "AS IS." Gracenote makes no representations or warranties, express or implied, regarding

the accuracy of any Gracenote Data from in the Gracenote Servers. Gracenote reserves the right to delete data from the Gracenote Servers or to change data categories for any cause that Gracenote deems sufficient. No warranty is made that the Gracenote Software or Gracenote Servers are error-free or that functioning of Gracenote Software or Gracenote Servers will be uninterrupted. Gracenote is not obligated to provide you with new enhanced or additional data types or categories that Gracenote may provide in the future and is free to discontinue its services at any time.

GRACENOTE DISCLAIMS ALL WARRANTIES EXPRESS OR IMPLIED, INCLUDING, BUT NOT LIMITED TO, IMPLIED WARRANTIES OF MERCHANTABILITY, FITNESS FOR A PARTICULAR PURPOSE, TITLE, AND NON-INFRINGEMENT. GRACENOTE DOES NOT WARRANT THE RESULTS THAT WILL BE OBTAINED BY YOUR USE OF THE GRACENOTE SOFTWARE OR ANY GRACENOTE SERVER. IN NO CASE WILL GRACENOTE BE LIABLE FOR ANY CONSEQUENTIAL OR INCIDENTAL DAMAGES OR FOR ANY LOST PROFITS OR LOST REVENUES.

© Gracenote 2006

Contact information

Argentina	(54-11) 4544-2047
Australia	1300 363 391
Austria	0810 000 205
Belgium	78250145
Belarus	882000110068
Brazil	0800 701 02 03 (all except Sao Paulo)(11) 2121-0203 (Sao Paulo only)
Bulgaria	8001154424
Canada	1-888-744-5477
Chile	600 744 5477 (600-PHILIPS)
China	4008 800 008
Colombia	01 800 700 7445
Croatia	800222778
Czech Republic	800142840
Denmark	35258759
Estonia	8000100288
Finland	923113415
France	805025510
Germany	8000007520
Greece	80031221280
Hong Kong	852-2619 9663
Hungary	680018189
India	1860-180-1111
Ireland	16011777
Israel	9600900-09
Italy	800088774
Japan	0570-07-6666
Korea	080-600-6600
Latvia	80002794
Luxembourg	4066615644
Malaysia	1800 880 180
Mexico	01 800 504 6200
Netherlands	8000230076
New Zealand	0800 658 224

Norway	22708111
Pakistan	051 580 902-3
Peru	0800 00100
Philippines	(63 2) 667 9000
Poland	8003111318
Portugal	800780903
Romania	800894910
Russia Federation	(495)961-1111 (local rate)8-800-200-0880 (mobile phone - free)
Singapore	65 6882 3999
Slovakia	800004537
South Africa	(011) 471-5194
Spain	900800655
Sweden	857929100
Switzerland	844800544
Taiwan	0800 231 099
Thailand	66 2 652 8652
Turkey	0800 261 3302
Ukraine	8-800-500-69-70
United Kingdom	8003316015
United States	1-888-744-5477
Uruguay	(598-2) 619 6666
Venezuela	0800 100 4888

GPL Package / LGPL Library written offers

This product contains

Linux kernel (linux-2.4.27-vrs1)
Linux kernel drivers developed by NXP Semiconductors
ethtool
lsof
modutils
procps
smartmontools
libstdc++
libgcc
busybox
wireless_tools

made available under the GNU GPL license version 2 (hereafter called the Program and the GNU LGPL license version 2.1 (hereafter called the Library.

Philips Electronics Hong Kong Ltd. Hereby offers to deliver or make available, upon request, for a charge no more than the cost of physically performing source distribution, a complete machine-readable copy of the corresponding source code of the Program or Library on a medium customary used for software interchange. Please contact: Head of Development BLC Audio PDC Development 5/F., Philips Electronics Building, 5 Science Part East Avenue, Hong Kong Science Park, Shatin, Hong Kong.

This offer is valid for a period of three years after the date of purchase of this product.

GNU GENERAL PUBLIC LICENSE
Version 2, June 1991

Copyright (C) 1989, 1991 Free Software Foundation, Inc.,
51 Franklin Street, Fifth Floor, Boston, MA 02110-1301 USA
Everyone is permitted to copy and distribute verbatim copies
of this license document, but changing it is not allowed.

Preamble

The licenses for most software are designed to take away your freedom to share and change it. By contrast, the GNU General Public License is intended to guarantee your freedom to share and change free software--to make sure the software is free for all its users. This General Public License applies to most of the Free Software Foundation's software and to any other program whose authors commit to using it. (Some other Free Software Foundation software is covered by the GNU Lesser General Public License instead.) You can apply it to your programs, too.

When we speak of free software, we are referring to freedom, not price. Our General Public Licenses are designed to make sure that you have the freedom to distribute copies of free software (and charge for this service if you wish), that you receive source code or can get it if you want it, that you can change the software or use pieces of it in new free programs; and that you know you can do these things.

To protect your rights, we need to make restrictions that forbid anyone to deny you these rights or to ask you to surrender the rights. These restrictions translate to certain responsibilities for you if you distribute copies of the software, or if you modify it.

For example, if you distribute copies of such a program, whether gratis or for a fee, you must give the recipients all the rights that you have. You must make sure that they, too, receive or can get the source code. And you must show them these terms so they know their rights.

We protect your rights with two steps: (1) copyright the software, and (2) offer you this license which gives you legal permission to copy, distribute and/or modify the software.

Also, for each author's protection and ours, we want to make certain that everyone understands that there is no warranty for this free software. If the software is modified by someone else and passed on, we want its recipients to know that what they have is not the original, so that any problems introduced by others will not reflect on the original authors' reputations.

Finally, any free program is threatened constantly by software patents. We wish to avoid the danger that redistributors of a free program will individually obtain patent licenses, in effect making the program proprietary. To prevent this, we have made it clear that any patent must be licensed for everyone's free use or not licensed at all.

The precise terms and conditions for copying, distribution and modification follow.

GNU GENERAL PUBLIC LICENSE TERMS AND CONDITIONS FOR COPYING, DISTRIBUTION AND MODIFICATION

0. This License applies to any program or other work which contains a notice placed by the copyright holder saying it may be distributed under the terms of this General Public License. The "Program", below, refers to any such program or work, and a "work based on the Program" means either the Program or any derivative work under copyright law: that is to say, a work containing the Program or a portion of it, either verbatim or with modifications and/or translated into another language. (Hereinafter, translation is included without limitation in the term "modification".) Each licensee is addressed as "you".

Activities other than copying, distribution and modification are not covered by this License; they are outside its scope. The act of running the Program is not restricted, and the output from the Program is covered only if its contents constitute a work based on the Program (independent of having been made by running the Program). Whether that is true depends on what the Program does.

1. You may copy and distribute verbatim copies of the Program's source code as you receive it, in any medium, provided that you conspicuously and appropriately publish on each copy an appropriate copyright notice and disclaimer of warranty; keep intact all the notices that refer to this License and to the absence of any warranty; and give any other recipients of the Program a copy of this License along with the Program.

You may charge a fee for the physical act of transferring a copy, and you may at your option offer warranty protection in exchange for a fee.

2. You may modify your copy or copies of the Program or any portion of it, thus forming a work based on the Program, and copy and distribute such modifications or work under the terms of Section 1 above, provided that you also meet all of these conditions:

a) You must cause the modified files to carry prominent notices stating that you changed the files and the date of any change.

b) You must cause any work that you distribute or publish, that in whole or in part contains or is derived from the Program or any part thereof, to be licensed as a whole at no charge to all third parties under the terms of this License.

c) If the modified program normally reads commands interactively when run, you must cause it, when started running for such interactive use in the most ordinary way, to print or display an announcement including an appropriate copyright notice and a notice that there is no warranty (or else, saying that you provide a warranty) and that users may redistribute the program under these conditions, and telling the user how to view a copy of this License. (Exception: if the Program itself is interactive but does not normally print such an announcement, your work based on the Program is not required to print an announcement.)

These requirements apply to the modified work as a whole. If identifiable sections of that work are not derived from the Program, and can be reasonably considered independent and separate works in themselves, then this License, and its terms, do not apply to those sections when you distribute them as separate works. But when you distribute the same sections as part of a whole which is a work based on the Program, the distribution of the whole must be on the terms of this License, whose permissions for other licensees extend to the entire whole, and thus to each and every part regardless of who wrote it.

Thus, it is not the intent of this section to claim rights or contest your rights to work written entirely by you; rather, the intent is to exercise the right to control the distribution of derivative or collective works based on the Program.

In addition, mere aggregation of another work not based on the Program with the Program (or with a work based on the Program) on a volume of a storage or distribution medium does not bring the other work under the scope of this License.

3. You may copy and distribute the Program (or a work based on it, under Section 2) in object code or executable form under the terms of Sections 1 and 2 above provided that you also do one of the following:

a) Accompany it with the complete corresponding machine-readable source code, which must be distributed under the terms of Sections 1 and 2 above on a medium customarily used for software interchange;
or,

b) Accompany it with a written offer, valid for at least three years, to give any third party, for a charge no more than your cost of physically performing source distribution, a complete machine-readable copy of the corresponding source code, to be distributed under the terms of Sections 1 and 2 above on a medium customarily used for software interchange; or,

c) Accompany it with the information you received as to the offer to distribute corresponding source code. (This alternative is allowed only for noncommercial distribution and only if you received the program in object code or executable form with such an offer, in accord with Subsection b above.)

The source code for a work means the preferred form of the work for making modifications to it. For an executable work, complete source code means all the source code for all modules it contains, plus any associated interface definition files, plus the scripts used to control compilation and installation of the executable. However, as a

special exception, the source code distributed need not include anything that is normally distributed (in either source or binary form) with the major components (compiler, kernel, and so on) of the operating system on which the executable runs, unless that component itself accompanies the executable.

If distribution of executable or object code is made by offering access to copy from a designated place, then offering equivalent access to copy the source code from the same place counts as distribution of the source code, even though third parties are not compelled to copy the source along with the object code.

4. You may not copy, modify, sublicense, or distribute the Program except as expressly provided under this License. Any attempt otherwise to copy, modify, sublicense or distribute the Program is void, and will automatically terminate your rights under this License. However, parties who have received copies, or rights, from you under this License will not have their licenses terminated so long as such parties remain in full compliance.

5. You are not required to accept this License, since you have not signed it. However, nothing else grants you permission to modify or distribute the Program or its derivative works. These actions are prohibited by law if you do not accept this License. Therefore, by modifying or distributing the Program (or any work based on the Program), you indicate your acceptance of this License to do so, and all its terms and conditions for copying, distributing or modifying the Program or works based on it.

6. Each time you redistribute the Program (or any work based on the Program), the recipient automatically receives a license from the original licensor to copy, distribute or modify the Program subject to these terms and conditions. You may not impose any further restrictions on the recipients' exercise of the rights granted herein. You are not responsible for enforcing compliance by third parties to this License.

7. If, as a consequence of a court judgment or allegation of patent infringement or for any other reason (not limited to patent issues), conditions are imposed on you (whether by court order, agreement or otherwise) that contradict the conditions of this License, they do not excuse you from the conditions of this License. If you cannot distribute so as to satisfy simultaneously your obligations under this License and any other pertinent obligations, then as a consequence you may not distribute the Program at all. For example, if a patent license would not permit royalty-free redistribution of the Program by all those who receive copies directly or indirectly through you, then the only way you could satisfy both it and this License would be to refrain entirely from distribution of the Program.

If any portion of this section is held invalid or unenforceable under any particular circumstance, the balance of the section is intended to apply and the section as a whole is intended to apply in other circumstances.

It is not the purpose of this section to induce you to infringe any patents or other property right claims or to contest validity of any such claims; this section has the sole purpose of protecting the integrity of the free software distribution system, which is implemented by public license practices. Many people have made generous contributions to the wide range of software distributed through that system in reliance on consistent application of that system; it is up to the author/donor to decide if he or she is willing to distribute software through any other system and a licensee cannot impose that choice.

This section is intended to make thoroughly clear what is believed to be a consequence of the rest of this License.

8. If the distribution and/or use of the Program is restricted in certain countries either by patents or by copyrighted interfaces, the original copyright holder who places the Program under this License may add an explicit geographical distribution limitation excluding those countries, so that distribution is permitted only in or among countries not thus excluded. In such case, this License incorporates the limitation as if written in the body of this License.

9. The Free Software Foundation may publish revised and/or new versions of the General Public License from time to time. Such new versions will be similar in spirit to the present version, but may differ in detail to address new problems or concerns.

Each version is given a distinguishing version number. If the Program specifies a version number of this License which applies to it and "any later version", you have the option of following the terms and conditions either of that version or of any later version published by the Free Software Foundation. If the Program does not specify a version number of this License, you may choose any version ever published by the Free Software Foundation.

10. If you wish to incorporate parts of the Program into other free programs whose distribution conditions are different, write to the author to ask for permission. For software which is copyrighted by the Free Software Foundation, write to the Free Software Foundation; we sometimes make exceptions for this. Our decision will be guided by the two goals of preserving the free status of all derivatives of our free software and of promoting the sharing and reuse of software generally.

NO WARRANTY

11. BECAUSE THE PROGRAM IS LICENSED FREE OF CHARGE, THERE IS NO WARRANTY FOR THE PROGRAM, TO THE EXTENT PERMITTED BY APPLICABLE LAW. EXCEPT WHEN OTHERWISE STATED IN WRITING THE COPYRIGHT HOLDERS AND/OR OTHER PARTIES PROVIDE THE PROGRAM "AS IS" WITHOUT WARRANTY OF ANY KIND, EITHER EXPRESSED OR IMPLIED, INCLUDING, BUT NOT LIMITED TO, THE IMPLIED WARRANTIES OF MERCHANTABILITY AND FITNESS FOR A PARTICULAR PURPOSE. THE ENTIRE RISK AS TO THE QUALITY AND PERFORMANCE OF THE PROGRAM IS WITH YOU. SHOULD THE PROGRAM PROVE DEFECTIVE, YOU ASSUME THE COST OF ALL NECESSARY SERVICING, REPAIR OR CORRECTION.

12. IN NO EVENT UNLESS REQUIRED BY APPLICABLE LAW OR AGREED TO IN WRITING WILL ANY COPYRIGHT HOLDER, OR ANY OTHER PARTY WHO MAY MODIFY AND/OR REDISTRIBUTE THE PROGRAM AS PERMITTED ABOVE, BE LIABLE TO YOU FOR DAMAGES, INCLUDING ANY GENERAL, SPECIAL, INCIDENTAL OR CONSEQUENTIAL DAMAGES ARISING OUT OF THE USE OR INABILITY TO USE THE PROGRAM (INCLUDING BUT NOT LIMITED TO LOSS OF DATA OR DATA BEING RENDERED INACCURATE OR LOSSES SUSTAINED BY YOU OR THIRD PARTIES OR A FAILURE OF THE PROGRAM TO OPERATE WITH ANY

OTHER PROGRAMS), EVEN IF SUCH HOLDER OR OTHER PARTY HAS BEEN ADVISED OF THE POSSIBILITY OF SUCH DAMAGES.

END OF TERMS AND CONDITIONS

How to Apply These Terms to Your New Programs

If you develop a new program, and you want it to be of the greatest possible use to the public, the best way to achieve this is to make it free software which everyone can redistribute and change under these terms.

To do so, attach the following notices to the program. It is safest to attach them to the start of each source file to most effectively convey the exclusion of warranty; and each file should have at least the "copyright" line and a pointer to where the full notice is found.

<one line to give the program's name and a brief idea of what it does.>

Copyright (C) <year> <name of author>

This program is free software; you can redistribute it and/or modify it under the terms of the GNU General Public License as published by the Free Software Foundation; either version 2 of the License, or (at your option) any later version.

This program is distributed in the hope that it will be useful, but WITHOUT ANY WARRANTY; without even the implied warranty of MERCHANTABILITY or FITNESS FOR A PARTICULAR PURPOSE. See the GNU General Public License for more details.

You should have received a copy of the GNU General Public License along

with this program; if not, write to the Free Software Foundation, Inc.,

51 Franklin Street, Fifth Floor, Boston, MA 02110-1301 USA.

Also add information on how to contact you by electronic and paper mail.

If the program is interactive, make it output a short notice like this when it starts in an interactive mode:

Gnomovision version 69, Copyright (C) year name of author

Gnomovision comes with ABSOLUTELY NO WARRANTY; for details type `show w'.

This is free software, and you are welcome to redistribute it under certain conditions; type `show c' for details.

The hypothetical commands `show w' and `show c' should show the appropriate

parts of the General Public License. Of course, the commands you use may

be called something other than `show w' and `show c'; they could even be mouse-clicks or menu items--whatever suits your program.

You should also get your employer (if you work as a programmer) or your school, if any, to sign a "copyright disclaimer" for the program, if necessary. Here is a sample; alter the names:

Yoyodyne, Inc., hereby disclaims all copyright interest in the program 'Gnomovision' (which makes passes at compilers) written by James Hacker.

<signature of Ty Coon>, 1 April 1989

Ty Coon, President of Vice

This General Public License does not permit incorporating your program into proprietary programs. If your program is a subroutine library, you may consider it more useful to permit linking proprietary applications with the library. If this is what you want to do, use the GNU Lesser General Public License instead of this License.

glibc
uclibc
uclibc
(library in dynamic link)
OpenRTSP
LibMMS

GNU LESSER GENERAL PUBLIC LICENSE
Version 2.1, February 1999

Copyright (C) 1991, 1999 Free Software Foundation, Inc.
51 Franklin Street, Fifth Floor, Boston, MA 02110-1301 USA
Everyone is permitted to copy and distribute verbatim copies
of this license document, but changing it is not allowed.

[This is the first released version of the Lesser GPL. It also counts
as the successor of the GNU Library Public License, version 2, hence
the version number 2.1.]

Preamble

The licenses for most software are designed to take away your freedom to share and change it. By contrast, the GNU General Public Licenses are intended to guarantee your freedom to share and change free software--to make sure the software is free for all its users.

This license, the Lesser General Public License, applies to some specially designated software packages--typically libraries--of the Free Software Foundation and other authors who decide to use it. You can use it too, but we suggest you first think carefully about whether this license or the ordinary General Public License is the better strategy to use in any particular case, based on the explanations below.

When we speak of free software, we are referring to freedom of use, not price. Our General Public Licenses are designed to make sure that you have the freedom to distribute copies of free software (and charge for this service if you wish); that you receive source code or can get it if you want it; that you can change the software and use pieces of it in new free programs; and that you are informed that you can do these things.

To protect your rights, we need to make restrictions that forbid distributors to deny you these rights or to ask you to surrender these rights. These restrictions translate to certain responsibilities for you if you distribute copies of the library or if you modify it.

For example, if you distribute copies of the library, whether gratis or for a fee, you must give the recipients all the rights that we gave you. You must make sure that they, too, receive or can get the source code. If you link other code with the library, you must provide complete object files to the recipients, so that they can relink them

with the library after making changes to the library and recompiling it. And you must show them these terms so they know their rights.

We protect your rights with a two-step method: (1) we copyright the library, and (2) we offer you this license, which gives you legal permission to copy, distribute and/or modify the library.

To protect each distributor, we want to make it very clear that there is no warranty for the free library. Also, if the library is modified by someone else and passed on, the recipients should know that what they have is not the original version, so that the original author's reputation will not be affected by problems that might be introduced by others.

Finally, software patents pose a constant threat to the existence of any free program. We wish to make sure that a company cannot effectively restrict the users of a free program by obtaining a restrictive license from a patent holder. Therefore, we insist that any patent license obtained for a version of the library must be consistent with the full freedom of use specified in this license.

Most GNU software, including some libraries, is covered by the ordinary GNU General Public License. This license, the GNU Lesser General Public License, applies to certain designated libraries, and is quite different from the ordinary General Public License. We use this license for certain libraries in order to permit linking those libraries into non-free programs.

When a program is linked with a library, whether statically or using a shared library, the combination of the two is legally speaking a combined work, a derivative of the original library. The ordinary General Public License therefore permits such linking only if the entire combination fits its criteria of freedom. The Lesser General Public License permits more lax criteria for linking other code with the library.

We call this license the "Lesser" General Public License because it does less to protect the user's freedom than the ordinary General Public License. It also provides other free software developers less of an advantage over competing non-free programs. These disadvantages are the reason we use the ordinary General Public License for many libraries. However, the Lesser license provides advantages in certain special circumstances.

For example, on rare occasions, there may be a special need to encourage the widest possible use of a certain library, so that it becomes

a de-facto standard. To achieve this, non-free programs must be allowed to use the library. A more frequent case is that a free library does the same job as widely used non-free libraries. In this case, there is little to gain by limiting the free library to free software only, so we use the Lesser General Public License.

In other cases, permission to use a particular library in non-free programs enables a greater number of people to use a large body of free software. For example, permission to use the GNU C Library in non-free programs enables many more people to use the whole GNU operating system, as well as its variant, the GNU/Linux operating system.

Although the Lesser General Public License is less protective of the users' freedom, it does ensure that the user of a program that is linked with the Library has the freedom and the wherewithal to run that program using a modified version of the Library.

The precise terms and conditions for copying, distribution and modification follow. Pay close attention to the difference between a "work based on the library" and a "work that uses the library". The former contains code derived from the library, whereas the latter must be combined with the library in order to run.

GNU LESSER GENERAL PUBLIC LICENSE
TERMS AND CONDITIONS FOR COPYING, DISTRIBUTION AND MODIFICATION

0. This License Agreement applies to any software library or other program which contains a notice placed by the copyright holder or other authorized party saying it may be distributed under the terms of this Lesser General Public License (also called "this License"). Each licensee is addressed as "you".

A "library" means a collection of software functions and/or data prepared so as to be conveniently linked with application programs (which use some of those functions and data) to form executables.

The "Library", below, refers to any such software library or work which has been distributed under these terms. A "work based on the Library" means either the Library or any derivative work under copyright law: that is to say, a work containing the Library or a portion of it, either verbatim or with modifications and/or translated straightforwardly into another language. (Hereinafter, translation is included without limitation in the term "modification".)

"Source code" for a work means the preferred form of the work for making modifications to it. For a library, complete source code means all the source code for all modules it contains, plus any associated interface definition files, plus the scripts used to control compilation and installation of the library.

Activities other than copying, distribution and modification are not covered by this License; they are outside its scope. The act of running a program using the Library is not restricted, and output from such a program is covered only if its contents constitute a work based on the Library (independent of the use of the Library in a tool for writing it). Whether that is true depends on what the Library does and what the program that uses the Library does.

1. You may copy and distribute verbatim copies of the Library's complete source code as you receive it, in any medium, provided that you conspicuously and appropriately publish on each copy an appropriate copyright notice and disclaimer of warranty; keep intact all the notices that refer to this License and to the absence of any warranty; and distribute a copy of this License along with the Library.

You may charge a fee for the physical act of transferring a copy, and you may at your option offer warranty protection in exchange for a fee.

2. You may modify your copy or copies of the Library or any portion of it, thus forming a work based on the Library, and copy and distribute such modifications or work under the terms of section 1 above, provided that you also meet all of these conditions:

a) The modified work must itself be a software library.

b) You must cause the files modified to carry prominent notices stating that you changed the files and the date of any change.

c) You must cause the whole of the work to be licensed at no charge to all third parties under the terms of this License.

d) If a facility in the modified Library refers to a function or a table of data to be supplied by an application program that uses the facility, other than as an argument passed when the facility is invoked, then you must make a good faith effort to ensure that, in the event an application does not supply such function or table, the facility still operates, and performs whatever part of its purpose remains meaningful.

(For example, a function in a library to compute square roots has a purpose that is entirely well-defined independent of the application. Therefore, Subsection 2d requires that any application-supplied function or table used by this function must be optional: if the application does not supply it, the square root function must still compute square roots.)

These requirements apply to the modified work as a whole. If identifiable sections of that work are not derived from the Library, and can be reasonably considered independent and separate works in themselves, then this License, and its terms, do not apply to those sections when you distribute them as separate works. But when you distribute the same sections as part of a whole which is a work based on the Library, the distribution of the whole must be on the terms of this License, whose permissions for other licensees extend to the entire whole, and thus to each and every part regardless of who wrote it.

Thus, it is not the intent of this section to claim rights or contest your rights to work written entirely by you; rather, the intent is to exercise the right to control the distribution of derivative or collective works based on the Library.

In addition, mere aggregation of another work not based on the Library with the Library (or with a work based on the Library) on a volume of a storage or distribution medium does not bring the other work under the scope of this License.

3. You may opt to apply the terms of the ordinary GNU General Public License instead of this License to a given copy of the Library. To do this, you must alter all the notices that refer to this License, so that they refer to the ordinary GNU General Public License, version 2, instead of to this License. (If a newer version than version 2 of the ordinary GNU General Public License has appeared, then you can specify that version instead if you wish.) Do not make any other change in these notices.

Once this change is made in a given copy, it is irreversible for that copy, so the ordinary GNU General Public License applies to all subsequent copies and derivative works made from that copy.

This option is useful when you wish to copy part of the code of the Library into a program that is not a library.

4. You may copy and distribute the Library (or a portion or derivative of it, under Section 2) in object code or executable form under the terms of Sections 1 and 2 above provided that you accompany it with the complete corresponding machine-readable source code, which must be distributed under the terms of Sections 1 and 2 above on a medium customarily used for software interchange.

If distribution of object code is made by offering access to copy

from a designated place, then offering equivalent access to copy the source code from the same place satisfies the requirement to distribute the source code, even though third parties are not compelled to copy the source along with the object code.

5. A program that contains no derivative of any portion of the Library, but is designed to work with the Library by being compiled or linked with it, is called a "work that uses the Library". Such a work, in isolation, is not a derivative work of the Library, and therefore falls outside the scope of this License.

However, linking a "work that uses the Library" with the Library creates an executable that is a derivative of the Library (because it contains portions of the Library), rather than a "work that uses the library". The executable is therefore covered by this License. Section 6 states terms for distribution of such executables.

When a "work that uses the Library" uses material from a header file that is part of the Library, the object code for the work may be a derivative work of the Library even though the source code is not. Whether this is true is especially significant if the work can be linked without the Library, or if the work is itself a library. The threshold for this to be true is not precisely defined by law.

If such an object file uses only numerical parameters, data structure layouts and accessors, and small macros and small inline functions (ten lines or less in length), then the use of the object file is unrestricted, regardless of whether it is legally a derivative work. (Executables containing this object code plus portions of the Library will still fall under Section 6.)

Otherwise, if the work is a derivative of the Library, you may distribute the object code for the work under the terms of Section 6. Any executables containing that work also fall under Section 6, whether or not they are linked directly with the Library itself.

6. As an exception to the Sections above, you may also combine or link a "work that uses the Library" with the Library to produce a work containing portions of the Library, and distribute that work under terms of your choice, provided that the terms permit modification of the work for the customer's own use and reverse engineering for debugging such modifications.

You must give prominent notice with each copy of the work that the Library is used in it and that the Library and its use are covered by this License. You must supply a copy of this License. If the work during execution displays copyright notices, you must include the copyright notice for the Library among them, as well as a reference directing the user to the copy of this License. Also, you must do one of these things:

a) Accompany the work with the complete corresponding machine-readable source code for the Library including whatever changes were used in the work (which must be distributed under Sections 1 and 2 above); and, if the work is an executable linked with the Library, with the complete machine-readable "work that uses the Library", as object code and/or source code, so that the user can modify the Library and then relink to produce a modified executable containing the modified Library. (It is understood that the user who changes the contents of definitions files in the Library will not necessarily be able to recompile the application to use the modified definitions.)

b) Use a suitable shared library mechanism for linking with the

Library. A suitable mechanism is one that (1) uses at run time a copy of the library already present on the user's computer system, rather than copying library functions into the executable, and (2) will operate properly with a modified version of the library, if the user installs one, as long as the modified version is interface-compatible with the version that the work was made with.

c) Accompany the work with a written offer, valid for at least three years, to give the same user the materials specified in Subsection 6a, above, for a charge no more than the cost of performing this distribution.

d) If distribution of the work is made by offering access to copy from a designated place, offer equivalent access to copy the above specified materials from the same place.

e) Verify that the user has already received a copy of these materials or that you have already sent this user a copy.

For an executable, the required form of the "work that uses the Library" must include any data and utility programs needed for reproducing the executable from it. However, as a special exception, the materials to be distributed need not include anything that is normally distributed (in either source or binary form) with the major components (compiler, kernel, and so on) of the operating system on which the executable runs, unless that component itself accompanies the executable.

It may happen that this requirement contradicts the license restrictions of other proprietary libraries that do not normally accompany the operating system. Such a contradiction means you cannot use both them and the Library together in an executable that you distribute.

7. You may place library facilities that are a work based on the Library side-by-side in a single library together with other library facilities not covered by this License, and distribute such a combined library, provided that the separate distribution of the work based on the Library and of the other library facilities is otherwise permitted, and provided that you do these two things:

a) Accompany the combined library with a copy of the same work based on the Library, uncombined with any other library facilities. This must be distributed under the terms of the Sections above.

b) Give prominent notice with the combined library of the fact that part of it is a work based on the Library, and explaining where to find the accompanying uncombined form of the same work.

8. You may not copy, modify, sublicense, link with, or distribute the Library except as expressly provided under this License. Any attempt otherwise to copy, modify, sublicense, link with, or distribute the Library is void, and will automatically terminate your rights under this License. However, parties who have received copies, or rights, from you under this License will not have their licenses terminated so long as such parties remain in full compliance.

9. You are not required to accept this License, since you have not signed it. However, nothing else grants you permission to modify or distribute the Library or its derivative works. These actions are prohibited by law if you do not accept this License. Therefore, by modifying or distributing the Library (or any work based on the Library), you indicate your acceptance of this License to do so, and

all its terms and conditions for copying, distributing or modifying the Library or works based on it.

10. Each time you redistribute the Library (or any work based on the Library), the recipient automatically receives a license from the original licensor to copy, distribute, link with or modify the Library subject to these terms and conditions. You may not impose any further restrictions on the recipients' exercise of the rights granted herein. You are not responsible for enforcing compliance by third parties with this License.

11. If, as a consequence of a court judgment or allegation of patent infringement or for any other reason (not limited to patent issues), conditions are imposed on you (whether by court order, agreement or otherwise) that contradict the conditions of this License, they do not excuse you from the conditions of this License. If you cannot distribute so as to satisfy simultaneously your obligations under this License and any other pertinent obligations, then as a consequence you may not distribute the Library at all. For example, if a patent license would not permit royalty-free redistribution of the Library by all those who receive copies directly or indirectly through you, then the only way you could satisfy both it and this License would be to refrain entirely from distribution of the Library.

If any portion of this section is held invalid or unenforceable under any particular circumstance, the balance of the section is intended to apply, and the section as a whole is intended to apply in other circumstances.

It is not the purpose of this section to induce you to infringe any patents or other property right claims or to contest validity of any such claims; this section has the sole purpose of protecting the integrity of the free software distribution system which is implemented by public license practices. Many people have made generous contributions to the wide range of software distributed through that system in reliance on consistent application of that system; it is up to the author/donor to decide if he or she is willing to distribute software through any other system and a licensee cannot impose that choice.

This section is intended to make thoroughly clear what is believed to be a consequence of the rest of this License.

12. If the distribution and/or use of the Library is restricted in certain countries either by patents or by copyrighted interfaces, the original copyright holder who places the Library under this License may add an explicit geographical distribution limitation excluding those countries, so that distribution is permitted only in or among countries not thus excluded. In such case, this License incorporates the limitation as if written in the body of this License.

13. The Free Software Foundation may publish revised and/or new versions of the Lesser General Public License from time to time. Such new versions will be similar in spirit to the present version, but may differ in detail to address new problems or concerns.

Each version is given a distinguishing version number. If the Library specifies a version number of this License which applies to it and "any later version", you have the option of following the terms and conditions either of that version or of any later version published by the Free Software Foundation. If the Library does not specify a

license version number, you may choose any version ever published by the Free Software Foundation.

14. If you wish to incorporate parts of the Library into other free programs whose distribution conditions are incompatible with these, write to the author to ask for permission. For software which is copyrighted by the Free Software Foundation, write to the Free Software Foundation; we sometimes make exceptions for this. Our decision will be guided by the two goals of preserving the free status of all derivatives of our free software and of promoting the sharing and reuse of software generally.

NO WARRANTY

15. BECAUSE THE LIBRARY IS LICENSED FREE OF CHARGE, THERE IS NO WARRANTY FOR THE LIBRARY, TO THE EXTENT PERMITTED BY APPLICABLE LAW. EXCEPT WHEN OTHERWISE STATED IN WRITING THE COPYRIGHT HOLDERS AND/OR OTHER PARTIES PROVIDE THE LIBRARY "AS IS" WITHOUT WARRANTY OF ANY KIND, EITHER EXPRESSED OR IMPLIED, INCLUDING, BUT NOT LIMITED TO, THE IMPLIED WARRANTIES OF MERCHANTABILITY AND FITNESS FOR A PARTICULAR PURPOSE. THE ENTIRE RISK AS TO THE QUALITY AND PERFORMANCE OF THE LIBRARY IS WITH YOU. SHOULD THE LIBRARY PROVE DEFECTIVE, YOU ASSUME THE COST OF ALL NECESSARY SERVICING, REPAIR OR CORRECTION.

16. IN NO EVENT UNLESS REQUIRED BY APPLICABLE LAW OR AGREED TO IN WRITING WILL ANY COPYRIGHT HOLDER, OR ANY OTHER PARTY WHO MAY MODIFY AND/OR REDISTRIBUTE THE LIBRARY AS PERMITTED ABOVE, BE LIABLE TO YOU FOR DAMAGES, INCLUDING ANY GENERAL, SPECIAL, INCIDENTAL OR CONSEQUENTIAL DAMAGES ARISING OUT OF THE USE OR INABILITY TO USE THE LIBRARY (INCLUDING BUT NOT LIMITED TO LOSS OF DATA OR DATA BEING RENDERED INACCURATE OR LOSSES SUSTAINED BY YOU OR THIRD PARTIES OR A FAILURE OF THE LIBRARY TO OPERATE WITH ANY OTHER SOFTWARE), EVEN IF SUCH HOLDER OR OTHER PARTY HAS BEEN ADVISED OF THE POSSIBILITY OF SUCH DAMAGES.

END OF TERMS AND CONDITIONS

How to Apply These Terms to Your New Libraries

If you develop a new library, and you want it to be of the greatest possible use to the public, we recommend making it free software that everyone can redistribute and change. You can do so by permitting redistribution under these terms (or, alternatively, under the terms of the ordinary General Public License).

To apply these terms, attach the following notices to the library. It is safest to attach them to the start of each source file to most effectively convey the exclusion of warranty; and each file should have at least the "copyright" line and a pointer to where the full notice is found.

<one line to give the library's name and a brief idea of what it does.>

Copyright (C) <year> <name of author>

This library is free software; you can redistribute it and/or modify it under the terms of the GNU Lesser General Public License as published by the Free Software Foundation; either version 2.1 of the License, or (at your option) any later version.

This library is distributed in the hope that it will be useful,

but WITHOUT ANY WARRANTY; without even the implied warranty of MERCHANTABILITY or FITNESS FOR A PARTICULAR PURPOSE. See the GNU Lesser General Public License for more details.

You should have received a copy of the GNU Lesser General Public License along with this library; if not, write to the Free Software Foundation, Inc., 51 Franklin Street, Fifth Floor, Boston, MA 02110-1301 USA

Also add information on how to contact you by electronic and paper mail.

You should also get your employer (if you work as a programmer) or your school, if any, to sign a "copyright disclaimer" for the library, if necessary. Here is a sample; alter the names:

Yoyodyne, Inc., hereby disclaims all copyright interest in the library 'Frob' (a library for tweaking knobs) written by James Random Hacker.

<signature of Ty Coon>, 1 April 1990
Ty Coon, President of Vice

That's all there is to it!

=====

Tiny XML(source code) zlib license

/* zlib.h -- interface of the 'zlib' general purpose compression library
version 1.2.2, October 3rd, 2004

Copyright (C) 1995-2004 Jean-loup Gailly and Mark Adler

This software is provided 'as-is', without any express or implied warranty. In no event will the authors be held liable for any damages arising from the use of this software.

Permission is granted to anyone to use this software for any purpose, including commercial applications, and to alter it and redistribute it freely, subject to the following restrictions:

1. The origin of this software must not be misrepresented; you must not claim that you wrote the original software. If you use this software in a product, an acknowledgment in the product documentation would be appreciated but is not required.
2. Altered source versions must be plainly marked as such, and must not be misrepresented as being the original software.
3. This notice may not be removed or altered from any source distribution.

Jean-loup Gailly jloup@gzip.org
Mark Adler madler@alumni.caltech.edu

*/

=====

SQLite(source code) public domain
All of the deliverable code in SQLite has been dedicated to the public

domain by the authors. All code authors, and representatives of the companies they work for, have signed affidavits dedicating their contributions to the public domain and originals of those signed affidavits are stored in a firesafe at the main offices of Hwaci. Anyone is free to copy, modify, publish, use, compile, sell, or distribute the original SQLite code, either in source code form or as a compiled binary, for any purpose, commercial or non-commercial, and by any means.

=====

cgi-html e-mail ware
This library is e-mail ware. Please send eekim@eekim.com e-mail if you use this library;

=====

strace

BSD license
Copyright (c) 1991, 1992 Paul Kranenburg <pk@cs.few.eur.nl>
Copyright (c) 1993 Branko Lankester <branko@hacktic.nl>
Copyright (c) 1993 Ulrich Pegelow <pegelow@moorea.uni-muenster.de>
Copyright (c) 1995, 1996 Michael Elizabeth Chastain
<mec@duracef.shout.net>
Copyright (c) 1993, 1994, 1995, 1996 Rick Sladkey <jrs@world.std.com>
Copyright (c) 1998-2001 Wichert Akkerman <wakkerma@deephackmode.org>
All rights reserved.

Redistribution and use in source and binary forms, with or without modification, are permitted provided that the following conditions are met:

1. Redistributions of source code must retain the above copyright notice, this list of conditions and the following disclaimer.
2. Redistributions in binary form must reproduce the above copyright notice, this list of conditions and the following disclaimer in the documentation and/or other materials provided with the distribution.
3. The name of the author may not be used to endorse or promote products derived from this software without specific prior written permission.

THIS SOFTWARE IS PROVIDED BY THE AUTHOR ``AS IS'' AND ANY EXPRESS OR IMPLIED WARRANTIES, INCLUDING, BUT NOT LIMITED TO, THE IMPLIED WARRANTIES OF MERCHANTABILITY AND FITNESS FOR A PARTICULAR PURPOSE ARE DISCLAIMED. IN NO EVENT SHALL THE AUTHOR BE LIABLE FOR ANY DIRECT, INDIRECT, INCIDENTAL, SPECIAL, EXEMPLARY, OR CONSEQUENTIAL DAMAGES (INCLUDING, BUT NOT LIMITED TO, PROCUREMENT OF SUBSTITUTE GOODS OR SERVICES; LOSS OF USE, DATA, OR PROFITS; OR BUSINESS INTERRUPTION) HOWEVER CAUSED AND ON ANY THEORY OF LIABILITY, WHETHER IN CONTRACT, STRICT LIABILITY, OR TORT (INCLUDING NEGLIGENCE OR OTHERWISE) ARISING IN ANY WAY OUT OF THE USE OF THIS SOFTWARE, EVEN IF ADVISED OF THE POSSIBILITY OF SUCH DAMAGE.

\$Id: COPYRIGHT,v 1.3 2002/03/31 18:43:00 wichert Exp \$

=====

dropbear

Dropbear contains a number of components from different sources, hence there are a few licenses and authors involved. All licenses are fairly non-restrictive.

The majority of code is written by Matt Johnston, under the license below.

Portions of the client-mode work are (c) 2004 Mihnea Stoenescu, under the same license:

Copyright (c) 2002-2004 Matt Johnston
Portions copyright (c) 2004 Mihnea Stoenescu
All rights reserved.

Permission is hereby granted, free of charge, to any person obtaining a copy of this software and associated documentation files (the "Software"), to deal in the Software without restriction, including without limitation the rights to use, copy, modify, merge, publish, distribute, sublicense, and/or sell copies of the Software, and to permit persons to whom the Software is furnished to do so, subject to the following conditions:

The above copyright notice and this permission notice shall be included in all copies or substantial portions of the Software.

THE SOFTWARE IS PROVIDED "AS IS", WITHOUT WARRANTY OF ANY KIND, EXPRESS OR IMPLIED, INCLUDING BUT NOT LIMITED TO THE WARRANTIES OF MERCHANTABILITY, FITNESS FOR A PARTICULAR PURPOSE AND NONINFRINGEMENT. IN NO EVENT SHALL THE AUTHORS OR COPYRIGHT HOLDERS BE LIABLE FOR ANY CLAIM, DAMAGES OR OTHER LIABILITY, WHETHER IN AN ACTION OF CONTRACT, TORT OR OTHERWISE, ARISING FROM, OUT OF OR IN CONNECTION WITH THE SOFTWARE OR THE USE OR OTHER DEALINGS IN THE SOFTWARE.

LibTomCrypt and LibTomMath are written by Tom St Denis, and are Public Domain.

sshpty.c is taken from OpenSSH 3.5p1,
Copyright (c) 1995 Tatu Ylonen <ylo@cs.hut.fi>, Espoo, Finland
All rights reserved
"As far as I am concerned, the code I have written for this software can be used freely for any purpose. Any derived versions of this software must be clearly marked as such, and if the derived work is incompatible with the protocol description in the RFC file, it must be called by a name other than "ssh" or "Secure Shell"."

loginrec.c
loginrec.h
atomicio.h
atomicio.c
and strlcat() (included in util.c) are from OpenSSH 3.6.1p2, and are licensed under the 2 point BSD license.

loginrec is written primarily by Andre Lucas, atomicio.c by Theo de Raadt.

strlcat() is (c) Todd C. Miller

Import code in keyimport.c is modified from PUTTY's import.c, licensed as follows:

PUTTY is copyright 1997-2003 Simon Tatham.

Portions copyright Robert de Bath, Joris van Rantwijk, Delian Delchev, Andreas Schultz, Jeroen Massar, Wez Furlong, Nicolas Barry, Justin Bradford, and CORE SDI S.A.

Permission is hereby granted, free of charge, to any person obtaining a copy of this software and associated documentation files (the "Software"), to deal in the Software without restriction, including without limitation the rights to use, copy, modify, merge, publish, distribute, sublicense, and/or sell copies of the Software, and to permit persons to whom the Software is furnished to do so, subject to the following conditions:

The above copyright notice and this permission notice shall be included in all copies or substantial portions of the Software.

THE SOFTWARE IS PROVIDED "AS IS", WITHOUT WARRANTY OF ANY KIND, EXPRESS OR IMPLIED, INCLUDING BUT NOT LIMITED TO THE WARRANTIES OF MERCHANTABILITY, FITNESS FOR A PARTICULAR PURPOSE AND NONINFRINGEMENT. IN NO EVENT SHALL THE COPYRIGHT HOLDERS BE LIABLE FOR ANY CLAIM, DAMAGES OR OTHER LIABILITY, WHETHER IN AN ACTION OF CONTRACT, TORT OR OTHERWISE, ARISING FROM, OUT OF OR IN CONNECTION WITH THE SOFTWARE OR THE USE OR OTHER DEALINGS IN THE SOFTWARE.

=====

libncurses5_5.4-4_arm.deb

This is the Debian prepackaged version of the ncurses library and terminfo utilities. ncurses/terminfo was originally written by Pavel Curtis and Zeyd M. Ben-Halim <zmbenhal@netcom.com>, and is currently held by the Free Software Foundation.

This package was put together by Vaidhyanathan G Mayilrangam <vaidhy@debian.org> and Joel Klecker <espy@debian.org>, using sources obtained from ftp://ftp.gnu.org/gnu/ncurses/ncurses-5.0.tar.gz.

Copyright (c) 1998 Free Software Foundation, Inc.

Permission is hereby granted, free of charge, to any person obtaining a copy of this software and associated documentation files (the "Software"), to deal in the Software without restriction, including without limitation the rights to use, copy, modify, merge, publish, distribute, distribute with modifications, sublicense, and/or sell copies of the Software, and to permit persons to whom the Software is

furnished to do so, subject to the following conditions:

The above copyright notice and this permission notice shall be included in all copies or substantial portions of the Software.

THE SOFTWARE IS PROVIDED "AS IS", WITHOUT WARRANTY OF ANY KIND, EXPRESS OR IMPLIED, INCLUDING BUT NOT LIMITED TO THE WARRANTIES OF MERCHANTABILITY, FITNESS FOR A PARTICULAR PURPOSE AND NONINFRINGEMENT. IN NO EVENT SHALL THE ABOVE COPYRIGHT HOLDERS BE LIABLE FOR ANY CLAIM, DAMAGES OR OTHER LIABILITY, WHETHER IN AN ACTION OF CONTRACT, TORT OR OTHERWISE, ARISING FROM, OUT OF OR IN CONNECTION WITH THE SOFTWARE OR THE USE OR OTHER DEALINGS IN THE SOFTWARE.

Except as contained in this notice, the name(s) of the above copyright holders shall not be used in advertising or otherwise to promote the sale, use or other dealings in this Software without prior written authorization.

=====

thttpd_2.23beta1-3_arm.deb

This package was produced by Yotam Rubin <yotam@makif.omer.k12.il>
from sources obtained from:
<<http://www.acme.com/software/thttpd/thttpd-2.21b.tar.gz>>
Its source files include the following copyright:

Copyright(C) 1995,1998,1999,2000 by Jef Poskanzer <jef@acme.com>.
All rights reserved.

thttpd-2.25b/config.guess:# Copyright (C) 1992, 93, 94, 95, 1996 Free
Software Foundation, Inc.
thttpd-2.25b/configure:# Copyright (C) 1992, 93, 94, 95, 96 Free
Software Foundation, Inc.
This file is free software; you can redistribute it and/or modify it
under the terms of the GNU General Public License as published by
the Free Software Foundation; either version 2 of the License, or
(at your option) any later version.

This program is distributed in the hope that it will be useful, but
WITHOUT ANY WARRANTY; without even the implied warranty of
MERCHANTABILITY or FITNESS FOR A PARTICULAR PURPOSE. See the GNU
General Public License for more details.

You should have received a copy of the GNU General Public License

```
# along with this program; if not, write to the Free Software
# Foundation, Inc., 59 Temple Place - Suite 330, Boston, MA 02111-1307,
# USA.
#
# As a special exception to the GNU General Public License, if you
# distribute this file as part of a program that contains a
# configuration script generated by Autoconf, you may include it under
# the same distribution terms that you use for the rest of that program.
```

```
thttpd-2.25b/config.sub:# Copyright (C) 1991, 92, 93, 94, 95, 1996
Free Software Foundation, Inc.
```

```
# This file is (in principle) common to ALL GNU software.
# The presence of a machine in this file suggests that SOME GNU software
# can handle that machine. It does not imply ALL GNU software can.
#
# This file is free software; you can redistribute it and/or modify
# it under the terms of the GNU General Public License as published by
# the Free Software Foundation; either version 2 of the License, or
# (at your option) any later version.
#
# This program is distributed in the hope that it will be useful,
# but WITHOUT ANY WARRANTY; without even the implied warranty of
# MERCHANTABILITY or FITNESS FOR A PARTICULAR PURPOSE. See the
# GNU General Public License for more details.
#
# You should have received a copy of the GNU General Public License
# along with this program; if not, write to the Free Software
# Foundation, Inc., 59 Temple Place - Suite 330,
# Boston, MA 02111-1307, USA.
```

```
thttpd-2.25b/config.h: Copyright(C)1995,1998,1999,2000,2001 by Jef
Poskanzer <jef@mail.acme.com>.
thttpd-2.25b/fdwatch.c: Copyright(C)1999,2000 by Jef Poskanzer
<jef@mail.acme.com>.
thttpd-2.25b/fdwatch.h: Copyright(C)1999 by Jef Poskanzer
<jef@mail.acme.com>.
thttpd-2.25b/libhttpd.c: Copyright(C)1995,1998,1999,2000,2001 by Jef
Poskanzer <jef@mail.acme.com>.
thttpd-2.25b/libhttpd.h: Copyright(C)1995,1998,1999,2000,2001 by Jef
Poskanzer <jef@mail.acme.com>.
thttpd-2.25b/Makefile.in:# Copyright(C)1995,1998 by Jef Poskanzer
<jef@mail.acme.com>.
thttpd-2.25b/match.c: Copyright(C)1995,2000 by Jef Poskanzer
<jef@mail.acme.com>.
thttpd-2.25b/match.h: Copyright(C)1995 by Jef Poskanzer
<jef@mail.acme.com>.
thttpd-2.25b/mmc.c: Copyright(C)1998,2001 by Jef Poskanzer
<jef@mail.acme.com>.
thttpd-2.25b/mmc.h: Copyright(C)1998 by Jef Poskanzer
<jef@mail.acme.com>.
thttpd-2.25b/tdate_parse.c: Copyright(C)1995 by Jef Poskanzer
<jef@mail.acme.com>.
thttpd-2.25b/tdate_parse.h: Copyright(C)1995 by Jef Poskanzer
<jef@mail.acme.com>.
thttpd-2.25b/thttpd.8:Copyright(C)1995,1998,1999,2000 by Jef Poskanzer
<jef@mail.acme.com>.
thttpd-2.25b/thttpd.c: Copyright(C)1995,1998,1999,2000,2001 by Jef
Poskanzer <jef@mail.acme.com>.
thttpd-2.25b/timers.c: Copyright(C)1995,1998,2000 by Jef Poskanzer
<jef@mail.acme.com>.
thttpd-2.25b/timers.h: Copyright(C)1995,1998,1999,2000 by Jef Poskanzer
<jef@mail.acme.com>.
```

```
thttpd-2.25b/cgi-src/Makefile.in:Copyright(C)1995 by Jef Poskanzer
<jef@mail.acme.com>.
thttpd-2.25b/cgi-src/phf.c: Copyright(C)1996 by Jef Poskanzer
<jef@mail.acme.com>.
thttpd-2.25b/cgi-src/redirect.8:Copyright(C)1995 by Jef Poskanzer
<jef@mail.acme.com>.
thttpd-2.25b/cgi-src/redirect.c: Copyright(C)1995 by Jef Poskanzer
<jef@mail.acme.com>.
thttpd-2.25b/cgi-src/ssi.8:Copyright(C)1995 by Jef Poskanzer
<jef@mail.acme.com>.
thttpd-2.25b/cgi-src/ssi.c: Copyright(C)1995 by Jef Poskanzer
<jef@mail.acme.com>.
thttpd-2.25b/extras/Makefile.in:Copyright(C)1995,1998 by Jef Poskanzer
<jef@mail.acme.com>.
thttpd-2.25b/extras/makeweb.1:Copyright(C)1995 by Jef Poskanzer
<jef@mail.acme.com>.
thttpd-2.25b/extras/makeweb.c: Copyright(C)1995 by Jef Poskanzer
<jef@mail.acme.com>.
thttpd-2.25b/extras/syslogtcern:Copyright(C)1995,1998 by Jef Poskanzer
<jef@mail.acme.com>.
thttpd-2.25b/extras/syslogtcern.8:Copyright(C)1995 by Jef Poskanzer
<jef@mail.acme.com>.
thttpd_2.23beta1-3_arm.deb
```

```
** Redistribution and use in source and binary forms, with or without
** modification, are permitted provided that the following conditions
** are met:
** 1. Redistributions of source code must retain the above copyright
**    notice, this list of conditions and the following disclaimer.
** 2. Redistributions in binary form must reproduce the above copyright
**    notice, this list of conditions and the following disclaimer in
**    the documentation and/or other materials provided with the
**    distribution.
**
** THIS SOFTWARE IS PROVIDED BY THE AUTHOR AND CONTRIBUTORS ``AS IS''
** AND
** ANY EXPRESS OR IMPLIED WARRANTIES, INCLUDING, BUT NOT LIMITED TO, THE
** IMPLIED WARRANTIES OF MERCHANTABILITY AND FITNESS FOR A PARTICULAR
** PURPOSE
** ARE DISCLAIMED.  IN NO EVENT SHALL THE AUTHOR OR CONTRIBUTORS BE
** LIABLE
** FOR ANY DIRECT, INDIRECT, INCIDENTAL, SPECIAL, EXEMPLARY, OR
** CONSEQUENTIAL
** DAMAGES (INCLUDING, BUT NOT LIMITED TO, PROCUREMENT OF SUBSTITUTE
** GOODS
** OR SERVICES; LOSS OF USE, DATA, OR PROFITS; OR BUSINESS INTERRUPTION)
** HOWEVER CAUSED AND ON ANY THEORY OF LIABILITY, WHETHER IN CONTRACT,
** STRICT
** LIABILITY, OR TORT (INCLUDING NEGLIGENCE OR OTHERWISE) ARISING IN ANY
** WAY
** OUT OF THE USE OF THIS SOFTWARE, EVEN IF ADVISED OF THE POSSIBILITY
** OF
** SUCH DAMAGE.
```

```
thttpd-2.25b/install-sh:# Copyright 1991 by the Massachusetts Institute
of Technology
#
# Permission to use, copy, modify, distribute, and sell this software
and its
# documentation for any purpose is hereby granted without fee, provided
that
# the above copyright notice appear in all copies and that both that
```

copyright notice and this permission notice appear in supporting
documentation, and that the name of M.I.T. not be used in advertising
or
publicity pertaining to distribution of the software without specific,
written prior permission. M.I.T. makes no representations about the
suitability of this software for any purpose. It is provided "as is"
without express or implied warranty.

thttpd-2.25b/strerror.c: * Copyright (c) 1988 Regents of the University
of California.

* All rights reserved.

*

* Redistribution and use in source and binary forms are permitted

* provided that the above copyright notice and this paragraph are

* duplicated in all such forms and that any documentation,

* advertising materials, and other materials related to such

* distribution and use acknowledge that the software was developed

* by the University of California, Berkeley. The name of the

* university may not be used to endorse or promote products derived

* from this software without specific prior written permission.

* THIS SOFTWARE IS PROVIDED `AS IS' AND WITHOUT ANY EXPRESS OR

* IMPLIED WARRANTIES, INCLUDING, WITHOUT LIMITATION, THE IMPLIED

* WARRANTIES OF MERCHANTABILITY AND FITNESS FOR A PARTICULAR PURPOSE.

=====



© 2008 Koninklijke Philips Electronics N.V.
All rights reserved.
Document order number: 000000000000

wac7500_05_um_v2.1
wk9454