

PHILIPS

Fidelio

Soundbar speaker

wireless detachable
speakers and subwooferwireless music streaming
with Bluetooth

User manual

Příručka pro uživatele

Brugervejledning

Benutzerhandbuch

Manual del usuario

Käyttöopas

Mode d'emploi

Felhasználói kézikönyv

Manuale utente

Gebruiksaanwijzing

Brukerhåndbok

Instrukcja obsługi

Manual do utilizador

Användarhandbok

Kullanım kılavuzu

Руководство пользователя

Посібник користувача

Қолданушының нұсқасы

Always there to help you

Register your product and get support at
www.philips.com/support

Question?
Contact
Philips

Contents

1 Important	2
Safety	2
Care for your product	2
Care of the environment	3
Compliance	3
Help and support	3

2 Your SoundBar	3
Main unit	3
Remote control	4
Wireless portable speakers	5
Wireless subwoofer	5
Connectors	6

3 Connect and set up	6
Charge portable speakers	6
Pair up with subwoofer/speakers	6
Place speakers	7
Connect to TV	7
Connect digital devices through HDMI	8
Connect audio from TV and other devices	8

4 Spatial calibration	9
Step 1: calibrate the listening zone	9
Step 2: calibrate the surround speaker position	9

5 Use your SoundBar	10
Adjust the volume	10
Choose your sound	10
MP3 player	11
Play music via Bluetooth	11
Connect Bluetooth via NFC	12
Auto standby	13
Set display brightness	13
Apply factory settings	13

6 Update software	13
Check software version	13
Update software via USB	13

7 Wall mount your SoundBar	14
Wall mount	14

8 Product specifications	14
---------------------------------	----

9 Troubleshooting	15
--------------------------	----

1 Important

Read and understand all instructions before you use your product. If damage is caused by failure to follow instructions, the warranty does not apply.

Safety

Risk of electric shock or fire!

- Never expose the product and accessories to rain or water. Never place liquid containers, such as vases, near the product. If liquids are spilt on or into the product, disconnect it from the power outlet immediately. Contact Consumer Care to have the product checked before use.
- Never place the product and accessories near naked flames or other heat sources, including direct sunlight.
- Never insert objects into the ventilation slots or other openings on the product.
- Where the mains plug or an appliance coupler is used as the disconnect device, the disconnect device shall remain readily operable.
- Disconnect the product from the power outlet before lightning storms.
- When you disconnect the power cord, always pull the plug, never the cable.

Risk of short circuit or fire!

- Before you connect the product to the power outlet, ensure that the power voltage matches the value printed on the back or bottom of the product. Never connect the product to the power outlet if the voltage is different.

Risk of injury or damage to this product!

- For wall-mountable products, use only the supplied wall mount bracket. Secure the wall mount to a wall that can support the combined weight of the product and the wall mount. Gibson Innovations bears no responsibility for improper wall mounting that results in accident, injury or damage.
- Never place the product or any objects on power cords or on other electrical equipment.
- If the product is transported in temperatures below 5°C, unpack the product and wait until its temperature matches room temperature before connecting it to the power outlet.
- Parts of this product can be made of glass. Handle with care to avoid injury and damage.

Risk of overheating!

- Never install this product in a confined space. Always leave a space of at least four inches around the product for ventilation. Ensure curtains or other objects never cover the ventilation slots on the product.

Risk of contamination!

- Do not mix batteries (old and new or carbon and alkaline, etc.).
- Danger of explosion if batteries are incorrectly replaced. Replace only with the same or equivalent type.
- Remove batteries if they are exhausted or if the remote control is not to be used for a long time.
- Batteries contain chemical substances, they should be disposed of properly.

Risk of swallowing batteries!

- The product/remote control may contain a coin/button type battery, which can be swallowed. Keep the battery out of reach of children at all times! If swallowed, the battery can cause serious injury or death. Severe internal burns can occur within two hours of ingestion.
- If you suspect that a battery has been swallowed or placed inside any part of the body, seek immediate medical attention.
- When you change the batteries, always keep all new and used batteries out of reach of children. Ensure that the battery compartment is completely secure after you replace the battery.
- If the battery compartment cannot be completely secured, discontinue use of the product. Keep out of reach of children and contact the manufacturer.



This is CLASS II apparatus with double insulation, and no protective earth provided.

Care for your product

Use only microfiber cloth to clean the product.

Care of the environment

Disposal of your old product and battery



Your product is designed and manufactured with high quality materials and components, which can be recycled and reused.



This symbol on a product means that the product is covered by European Directive 2012/19/EU.



This symbol means that the product contains a built-in rechargeable battery covered by European Directive 2013/56/EU which cannot be disposed of with normal household waste. We strongly advise you to take your product to an official collection point or a Philips service centre to have a professional remove the rechargeable battery.

Inform yourself about the local separate collection system for electrical and electronic products and rechargeable batteries. Follow local rules and never dispose of the product and rechargeable batteries with normal household waste. Correct disposal of old products and rechargeable batteries helps prevent negative consequences for the environment and human health.

Compliance

This product complies with the radio interference requirements of the European Community. Hereby, Gibson Innovations declares that this product is in compliance with the essential requirements and other relevant provisions of Directive 2014/53/EU. You can find the Declaration of Conformity on www.p4c.philips.com.

Help and support

For extensive online support, visit www.philips.com/support to:

- download the user manual and the quick start guide

- watch video tutorials (available only for selected models)
- find answers to frequently answered questions (FAQs)
- email us a question
- chat with our support representative.

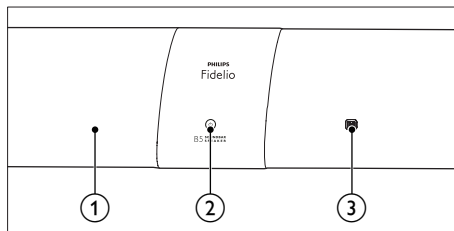
Follow the instructions on the website to select your language, and then enter your product model number. Alternatively, you can contact Consumer Care in your country. Before you contact, note down the model number and serial number of your product. You can find this information on the back or bottom of your product.

2 Your SoundBar

Congratulations on your purchase, and welcome to Philips! To fully benefit from the support that Philips offers, register your SoundBar at www.philips.com/welcome.

Main unit

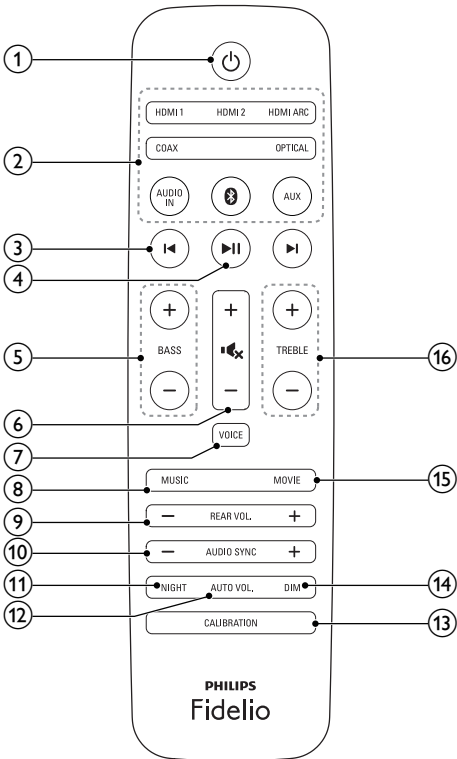
This section includes an overview of the main unit.



- ① **Display panel**
- ② **⏻ (Standby-On/Standby indicator)**
When the SoundBar is in standby, the standby indicator turns red.
- ③ **NFC tag**
Tap the NFC-enabled device on the tag for Bluetooth connection.

Remote control


This section includes an overview of the remote control.



① 

Switch the SoundBar on or to standby.

② **Source buttons**

- **HDMI ARC:** Switch your source to HDMI ARC connection.
- **HDMI 1:** Switch your source to the HDMI IN 1 connection.
- **HDMI 2:** Switch your source to the HDMI IN 2 connection.
- **COAX:** Switch your audio source to the coaxial connection.
- **OPTICAL:** Switch your audio source to the optical connection.
- **AUDIO IN:** Switch your audio source to the MP3 connection (3.5mm jack).
- : For Bluetooth on the main unit only: Switch to Bluetooth mode.

- **AUX:** Switch your audio source to the AUX connection.

③  / 

For Bluetooth on the main unit only: skip to the previous or next track.


④ 

For Bluetooth on the main unit only: play, pause or resume.

⑤ **BASS +/-**

Increase or decrease bass on the main unit.

⑥ **Volume control**

- **+/-:** Increase or decrease volume.
- : Mute or restore volume.

⑦ **VOICE**

- Press to select voice clarity sound mode.
- Press and hold to toggle on or off **CLOSE TO ME** (close to me) sound mode.

⑧ **MUSIC**

Select stereo sound mode.

⑨ **REAR VOL. +/-**

Press to increase or decrease volume of the portable left and right speakers (only applicable when the portable left and right speakers are wirelessly connected to the main unit (or **SURROUND ON DEMAND** mode switches on)).

⑩ **AUDIO SYNC +/-**

Increase or decrease audio delay.

⑪ **NIGHT**

Turn night mode on or off.

⑫ **AUTO VOL.**

Turn auto volume on or off.

⑬ **CALIBRATION**

- Press and hold to trigger calibration for listening zone.
- Press three times to trigger calibration for the portable left and right speakers position.

⑭ **DIM**

Set the brightness of SoundBar display panel.

⑮ **MOVIE**

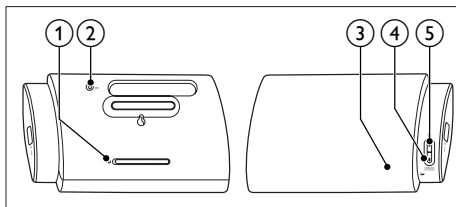
Select surround sound mode.

⑯ **TREBLE +/-**

Increase or decrease treble on the main unit.

Wireless portable speakers

The SoundBar comes with two wireless portable speakers (left and right).



*The illustration above is for overview of the portable left speaker:

- ① **Reset key**
Press with a pin to reset the portable speaker to the default settings.
- ② **ON**
 - Press to turn on the portable speaker if it automatically goes to standby.
 - Press and hold to switch the portable speaker to standby.
- ③ **Speaker LED**
 - **Blinks in red and orange alternatively** if the portable speaker is not wirelessly connected to the main unit.
 - **Lights up white** when the portable speaker is wirelessly connected to the main unit, or when the battery capacity is full or more than 30% remaining.
 - **Lights up red** when the battery capacity is less than 30% remaining.
 - **Blinks red** when the battery capacity is less than 10% remaining.
 - **Lights up orange** when the portable speaker is being charged (only for the portable speakers docked into the main unit).
- ④ **SURROUND ON DEMAND button/LED**
 - Press to switch the portable speaker to **SURROUND ON DEMAND** mode.
 - The LED lights up white when the portable speaker is switched to **SURROUND ON DEMAND** mode.
- ⑤ **Bluetooth button/LED**
 - Press to switch the portable speaker to Bluetooth mode.
 - The LED blinks when you switch the portable speaker to Bluetooth and no Bluetooth devices are connected.

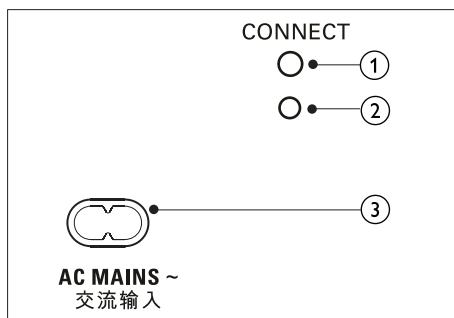
- The LED lights up when you switch the portable speaker to Bluetooth and Bluetooth devices are connected.

Note

- If you press the **Bluetooth** button on the portable speaker, the portable speaker disconnects the main unit (or **SURROUND ON DEMAND** mode switches off).

Wireless subwoofer

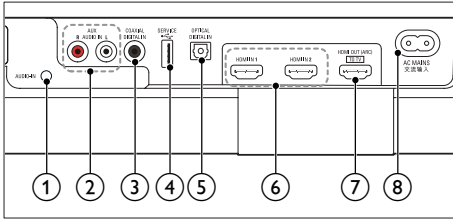
The SoundBar comes with a wireless subwoofer:




- ① **CONNECT (connect)**
Press to enter the pairing mode for the subwoofer.
- ② **Subwoofer indicator**
 - When the power is turned on, the indicator lights up.
 - During wireless pairing between the subwoofer and the main unit, the indicator blinks white quickly.
 - When the pairing succeeds, the indicator lights up white.
 - When the pairing fails, the indicator blinks white slowly.
- ③ **AC MAINS~**
Connect to the power supply.

Connectors

This section includes an overview of the connectors available on your SoundBar:



- 1 AUDIO-IN**
Audio input from, for example, an MP3 player (3.5mm jack).
- 2 AUX-AUDIO IN L/R**
Connect to an analog audio output on the TV or an analog device.
- 3 DIGITAL IN-COAXIAL**
Connect to a coaxial audio output on the TV or a digital device.
- 4  (SERVICE)**
Connect a USB flash drive to upgrade software of this product (not for media play).
- 5 DIGITAL IN-OPTICAL**
Connect to an optical audio output on the TV or a digital device.
- 6 HDMI IN1 / HDMI IN2**
Connect to the HDMI output on a digital device.
- 7 TO TV-HDMI OUT (ARC)**
Connect to the HDMI (ARC) input on the TV.
- 8 AC MAINS~**
Connect to the power supply.

3 Connect and set up

This section helps you connect your SoundBar to a TV and other devices, and then set it up. For information about the basic connections of your SoundBar and accessories, see the quick start guide.

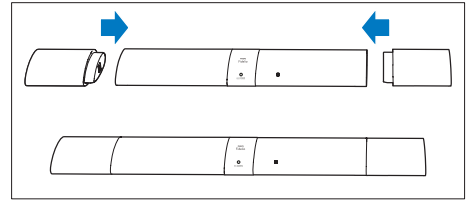
Note

- For identification and supply ratings, see the type plate at the back or bottom of the product.
- Before you make or change any connections, make sure that all devices are disconnected from the power outlet.

Charge portable speakers

If the portable left/right speaker is undocked from the main unit, its battery level is indicated by the LED on the speaker:

- **Light up white:** full battery or more than 30% capacity remaining
- **Light up red:** low battery level, less than 30% remaining
- **Flash red:** near empty, less than 10% remaining



- 1 Dock your portable speakers into the main unit to charge.
- 2 Turn on the main unit.
 - ↳ During charging, the LED on the portable speaker lights up orange.
 - ↳ When fully charged, the LED on the portable speaker lights up white for 10 seconds.

Note

- It may take around two hours to fully charge the portable speakers.
- Battery performance varies due to many factors including volume, sound setting and media played.

Pair up with subwoofer/speakers

The wireless speakers and subwoofer automatically pair up with the SoundBar for wireless connection when you turn on the SoundBar; the portable speakers and the subwoofer:

If no audio from the wireless speakers and subwoofer can be heard, manually pair up the portable speakers and the subwoofer.

Pair up with the subwoofer

- 1 Turn on the SoundBar and the subwoofer.
 - ↳ If the connection to the SoundBar is lost, the indicator on the subwoofer blinks white slowly.

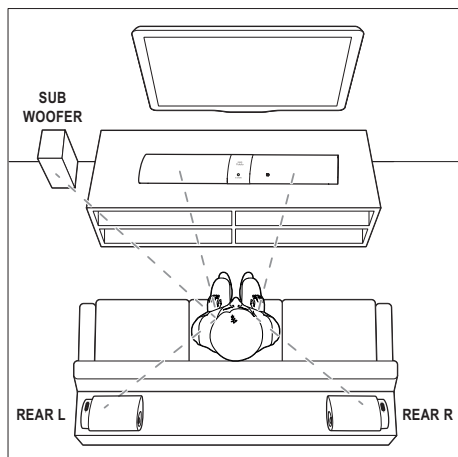
- 2 Press the **CONNECT** (connect) button on the subwoofer to enter the pairing mode.
 - ↳ The indicator on the subwoofer blinks white quickly.
- 3 In **OPTICAL** mode (press **OPTICAL**), within six seconds, on the remote control, press **⏏** twice then **Volume +** once, and then hold down **BASS +**.
 - ↳ If the pairing succeeds, the indicator on the subwoofer lights up white.
 - ↳ If the pairing fails, the indicator on the subwoofer blinks white slowly.
- 4 If the pairing fails, repeat the steps above.

Pair up with the speakers

- 1 Turn on the SoundBar and the portable speakers.
 - ↳ If the connection to the SoundBar is lost, the LED on the portable blinks in red and orange alternatively.
- 2 Dock the portable left and right speakers into the main unit to pair up automatically.
- 3 If the pairing fails, re-dock the portable speakers into the main unit.

Place speakers

For best sound effect, position all the speakers towards the seating position and place them close to your ear level (seated).



Note

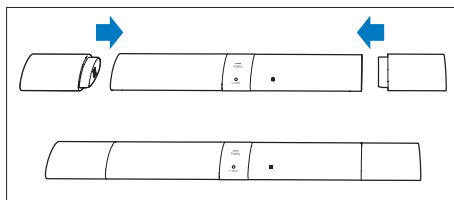
- Surround sound depends on factors such as room shape and size, type of wall and ceiling, windows and reflective surfaces, and speaker acoustics. Experiment with the speaker positions to find the optimum setting for you.

Follow these general guidelines for speakers placement.

- 1 **Seating position:**
This is the center of your listening area.
- 2 Place the SoundBar in front of the seating position.
- 3 **REAR L** (rear left) and **REAR R** (rear right):
Place the portable speakers (surround) to the left and right side of your seating position, either in line with it or slightly behind it.
- 4 **SUBWOOFER** (subwoofer):
Place the subwoofer at least one meter to the left or right of the TV. Leave about 10-centimeter clearance from the wall.

Dock the portable speakers

You can also dock the portable left and right speakers into the main unit to listen to audio, for example, watching TV shows and news.

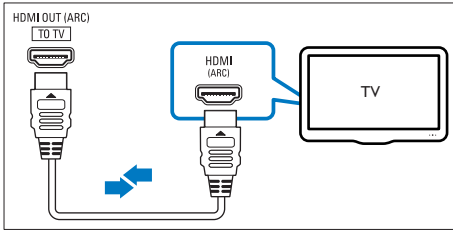


Connect to TV

Connect your SoundBar to a TV. You can listen to audio from TV programs through your SoundBar. Use the best quality connection available on your SoundBar and TV.

Connect to TV through HDMI (ARC)

Your SoundBar supports HDMI with Audio Return Channel (ARC). If your TV is HDMI ARC compliant, you can hear the TV audio through your SoundBar by using a single HDMI cable.



- Using a High Speed HDMI cable, connect the **HDMI OUT (ARC)** connector on your SoundBar to the **HDMI ARC** connector on the TV.
 - The **HDMI ARC** connector on the TV might be labeled differently. For details, see the TV user manual.
- On your TV, turn on HDMI-CEC operations. For details, see the TV user manual.

Note

- If your TV is not HDMI ARC compliant, connect an audio cable to hear the TV audio through your SoundBar: (see 'Connect audio from TV and other devices' on page 8)
- If your TV has a DVI connector, you can use an HDMI/DVI adapter to connect to TV. However, some of the features may not be available.

Connect digital devices through HDMI

Connect a digital device such as a set-top box, DVD/Blu-ray player, or games console to your SoundBar through a single HDMI connection. When you connect the devices in this way and play a file or game, the

- video is automatically displayed on your TV, and
- audio is automatically played on your SoundBar:

- Using a High Speed HDMI cable, connect the **HDMI OUT** connector on your digital device to the **HDMI IN 1/2** on your SoundBar.
- Connect your SoundBar to TV through **HDMI OUT (ARC)**.
 - If the TV is not HDMI CEC compliant, select the correct video input on your TV.
- On the connected device, turn on HDMI-CEC operations. For details, see the user manual of the device.

Connect audio from TV and other devices

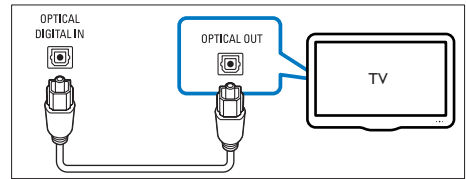
Play audio from TV or other devices through your Soundbar speakers. Use the best quality connection available on your TV, Soundbar, and other devices.

Note

- When your Soundbar and TV are connected through HDMI ARC, an audio connection is not required.

Option 1: Connect audio through a digital optical cable

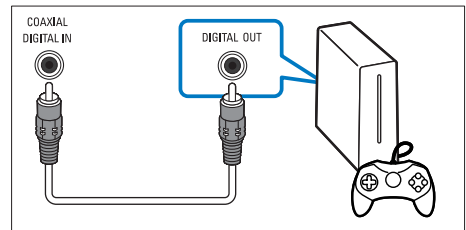
Best quality audio



- Using an optical cable, connect the **OPTICAL** connector on your SoundBar to the **OPTICAL OUT** connector on the TV or other device.
 - The digital optical connector might be labeled **SPDIF** or **SPDIF OUT**.

Option 2: Connect audio through a digital coaxial cable

Best quality audio

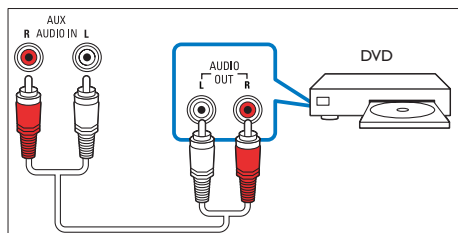


- Using a coaxial cable, connect the **COAXIAL** connector on your SoundBar to the **COAXIAL/DIGITAL OUT** connector on the TV or other device.
 - The digital coaxial connector might be labeled **DIGITAL AUDIO OUT**.

Option 3: Connect audio through analog audio cables

Basic quality audio

- Using an analog cable, connect the **AUX** connectors on your SoundBar to the **AUDIO OUT** connectors on the TV or other device.



4 Spatial calibration

Spatial calibration is used to achieve the following convenience, and simultaneously optimizes surround sound experience for it.

- Have freedom to place the portable left and right speakers (surround) according to your need.
- Automatically balance the portable speakers (surround) with respect to your seating position.

The spatial calibration involves two steps.

- Step 1:** calibrate the listening zone
- Step 2:** calibrate the surround speaker position

When to calibrate

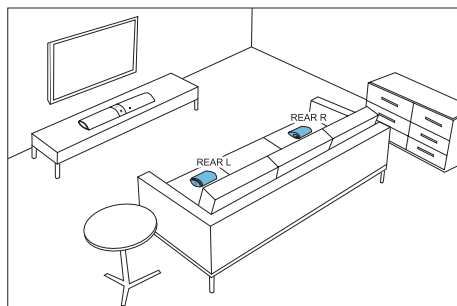
- If you perform spatial calibration for the first time, perform **Step 1** and **Step 2** in sequence.
- If you re-design your seating layout, perform **Step 1** and **Step 2** in sequence.
- If you re-locate the portable left and right speakers (surround), perform **Step 2** independently (**Step 1** can be skipped).

Before you start

- Make sure that the room is fairly quiet.
- Place the portable left and right speakers angled towards the main unit.
- Make sure that the main unit, the portable left and right speakers can fully "see" each other; no obstacle between them blocking such view. Stand the portable speakers upright if needed.
- The minimum distance between the portable speakers and the main unit is 0.8m (2.6'), the maximum distance 6m (20').

Step 1: calibrate the listening zone

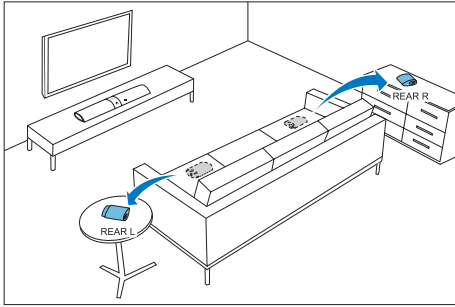
- Place the portable left and right speakers on two seating positions you prefer most (such as on a sofa).
 - Make sure that the portable left and right speakers are wirelessly connected to the main unit (press **SURROUND ON DEMAND**).



- Press and hold **CALIBRATION** on the remote control for three seconds to trigger calibration.
 - ↳ **ZONE** (zone) is displayed on the display panel.
 - ↳ You can hear the calibration tones from the portable speakers.
- Wait until the calibration tones end.
 - ↳ **->SPKR** (speaker) is displayed on the display panel.
- Then perform the following Step 2 (calibrate the surround speaker position) to complete and store the new settings.

Step 2: calibrate the surround speaker position

- Place the portable left and right speakers (surround) on the position you prefer.
 - Make sure that the portable left and right speakers are wirelessly connected to the main unit (press **SURROUND ON DEMAND**).



- 2 Press **CALIBRATION** once to trigger calibration.
 - Press **CALIBRATION** **three times** to trigger calibration if you re-locate the portable left and right speakers and skip Step 1 (calibrate the listening zone) after you completed a round of spatial calibration previously.
 - ↳ You can hear the calibration tones from the portable speakers.
- 3 Wait until the calibration tones end.
 - ↳ If the calibration succeeds, **DONE** (done) is displayed on the display panel. And the new settings are stored.

Note

- Spatial calibration takes around three minutes.
- Surround sound improvement is only noticeable if the portable left and right speakers (surround) were improperly placed, or if there is strong surround effect in the music you play.
- If the portable left and right speakers are swapped in placement, during calibration **L<->R** is displayed for few seconds, then the calibration completes.
- During calibration, you may press **CALIBRATION** to cancel calibration, and the settings returns to the default.
- If the spatial calibration fails, an error message is displayed on the display panel, such as **FAIL** (fail), and the settings returns to the default.
- If the spatial calibration fails, try the spatial calibration again, and make sure that the calibration points described at the beginning of this chapter are fully met.

5 Use your SoundBar

This section helps you use the SoundBar to play audio from connected devices.

Before you start

- Make the necessary connections described in the quick start guide and the user manual.
- Switch the SoundBar to the correct source for other devices.

Adjust the volume

- 1 Press **+/- (Volume)** to increase or decrease a volume level.
 - To mute sound, press **MUTE**.
 - To restore the sound, press **MUTE** again or press **+/- (Volume)**.

For the portable left and right speakers only

- 1 When the portable left and right speakers are wirelessly connected to the main unit (in **SURROUND ON DEMAND** mode), press **REAR VOL. +/-** to increase or decrease a volume level.

Choose your sound

This section helps you choose the ideal sound for your video or music.

Surround sound mode

Experience an immersive audio experience with surround sound modes.

- Press **MOVIE** to create a surround listening experience. Ideal for watching movie.
- Press **MUSIC** to create stereo sound. Ideal for listening to music.

Voice clarity

It makes human voice more clear and outstanding for listening.

- 1 Press **VOICE** to switch to voice clarity.
 - ↳ When voice clarity is turned on, **VOICE** is displayed.
- 2 To exit this sound mode, press **MOVIE** or **MUSIC** to select other sound mode.

CLOSE TO ME (close to me)

For ultimate clear sound without disturbing your neighbors, place both the portable left and right speakers close to you, and activate this feature (to mute the main unit).

Note

- It is applicable only when the portable left and right speakers are wirelessly connected to the main unit (or **SURROUND ON DEMAND** mode switches on).
- If **CLOSE TO ME** (close to me) is turned on, the functions for **MOVIE** and **MUSIC** buttons are disabled.

- 1 Press and hold **VOICE** for three seconds to activate the feature.
 - ↳ **CLOSE TO ME** (close to me) scrolls once on the display panel.
 - ↳ The main unit is muted.
- 2 To exit this sound mode, press and hold **VOICE** again for three seconds.
 - ↳ The previous sound mode switches in.

Equalizer

Change the high frequency (treble) and low frequency (bass) settings of the SoundBar.

- 1 Press **TREBLE +/-** or **BASS +/-** to change the frequency.

Auto volume

Turn the auto volume on to keep the volume constant when you switch to a different source. It also compresses the sound dynamics, increasing the volume for quiet scenes and decreasing the volume for loud scenes.

- 1 Press **AUTO VOL.** to turn auto volume on or off.
 - ↳ When auto volume is turned on, **ON AUTO** scrolls once on the display panel.
 - ↳ When auto volume is turned off, **OFF AUTO** scrolls once on the display panel.

Synchronize video and sound

If the audio and video are not synchronized, delay the audio to match the video.

- 1 Press **AUDIO SYNC +/-** to synchronize the audio with the video.
 - **AUDIO SYNC +** increases the sound delay, and **AUDIO SYNC -** decreases the sound delay.

Night mode

For quiet listening, night mode decreases the volume of loud sounds when audio is played. Night mode is only available for Dolby Digital soundtracks.

- 1 Press **NIGHT** to turn night mode on or off.
 - ↳ When night mode is turned on, **ON NIGHT** scrolls once on the display panel.
 - ↳ When night mode is turned off, **OFF NIGHT** scrolls once on the display panel.

Note

- If auto volume is set to turned on, you cannot enable the night mode.

MP3 player

Connect your MP3 player to play your audio files or music.

What you need

- An MP3 player.
 - A 3.5mm stereo audio cable.
- 1 Using the 3.5mm stereo audio cable, connect the MP3 player to the **AUDIO IN** connector on your SoundBar.
 - 2 Press **AUDIO IN**.
 - 3 Press the buttons on the MP3 player to select and play audio files or music.
 - On the MP3 player, it is recommended to set the volume in the range of 80% maximum volume.

Play music via Bluetooth

Through Bluetooth, connect the SoundBar with your Bluetooth device (such as an iPad, iPhone, iPod touch, Android phone, or laptop), and then you can listen to the audio files stored on the device through your SoundBar speakers.

What you need

- A Bluetooth device which supports Bluetooth profile A2DP, and with Bluetooth version as 2.1 + EDR.
- The maximum operational range between the SoundBar and a Bluetooth device is approximately 10 meters (30 feet).

Note

- The music streaming may be interrupted by obstacles between the device and this product, such as wall, metallic casing that covers the device, or other devices nearby that operate in the same frequency.
- If you want to connect this product with another Bluetooth device, break the current Bluetooth connection.

Bluetooth on the main unit

- 1 Press **0** on the remote control to switch the main unit to Bluetooth mode.
↳ **BT** on the display blinks.
- 2 On the Bluetooth device, switch on Bluetooth, search for and select **Fidelio B5** to start connection (see the user manual of the Bluetooth device on how to enable Bluetooth).
↳ During connection, **BT** on the display blinks.
- 3 Wait until **BT** on the display lights up.
↳ If the connection succeeds, **BT** on the display lights up.
↳ If the connection fails, **BT** on the display blinks.
- 4 Select and play audio files or music on your Bluetooth device.
 - During play, if a call is coming, music play is paused.
 - If music streaming is interrupted, place the Bluetooth device closer to the main unit.
- 5 To exit Bluetooth, select other source.
↳ When you switch back to Bluetooth mode, Bluetooth connection resumes.
 - To break the current Bluetooth connection, press and hold **0** on the remote control.

Bluetooth on a single speaker

You can use the portable left or the portable right speaker as a standalone Bluetooth speaker, independently from the main unit.

- 1 Press the **0** button on the left or right speaker to switch to Bluetooth mode.
↳ The **0** LED on the left or right speaker blinks.
- 2 On the Bluetooth device, switch on Bluetooth, search for and select the name of the left or right speaker to start connection (see the user manual of the Bluetooth device on how to enable Bluetooth).

- **B5 -L portable** stands for the portable left speaker; **B5 -R portable** for the portable right speaker.
↳ During connection, the **0** LED on the left or right speaker blinks.
- 3 Wait until the **0** LED on the portable speaker lights up.
↳ If the connection succeeds, connection tone is heard, and the **0** LED on the portable speaker lights up.
↳ If the connection fails, the **0** LED on the portable speaker blinks.
 - 4 Select and play audio files or music on your Bluetooth device.
 - During play, if a call is coming, music play is paused.
 - If music streaming is interrupted, place the Bluetooth device closer to the main unit.
 - 5 To exit Bluetooth, press the **SURROUND ON DEMAND** button on the speaker:
↳ When you switch back to Bluetooth mode, Bluetooth connection resumes.
 - To break the current Bluetooth connection, press and hold the **0** button on the speaker.

Note

- The function of the remote control is not available to a standalone Bluetooth speaker (the portable left or right speaker).

Connect Bluetooth via NFC

NFC (Near Field Communication) is a technology that enables short-range wireless communication between NFC-enabled devices, such as mobile phones.

What you need

- A Bluetooth device with NFC function.
- For pairing, tap the NFC device on the **NFC** tag of the main unit.

Note

- NFC feature is only available to the main unit, not available to the portable left and right speakers.

- 1 Enable NFC on the Bluetooth device (see the device's user manual for details).

- 2 Tap the NFC device onto the **NFC** tag of the main unit until the SoundBar beeps.
 - For first time connection, on some mobile devices prompt for pair-up appears, select "YES" for connection.
 - ↳ When the Bluetooth connection succeeds, **BT** is displayed on the display panel.
 - ↳ If the connection fails, **BT** on the display panel blinks continuously.
- 3 Select and play audio files or music on your NFC device.
 - To break the connection, tap again the NFC device onto the **NFC** tag on the main unit.

Auto standby

When playing media from a connected device, the SoundBar automatically switches to standby if:

- no source button is pressed for 15 minutes, and
- no audio/video playback is detected from a connected device.

Set display brightness

You can press **DIM** repeatedly to select a different brightness level of the display panel on this product.

- If you select **DIM O** (dim) on the display, the display turns off after 10 seconds each time you press a button on the remote control.

Apply factory settings

You can reset this product to the default settings programmed at the factory.

- 1 In **AUX** mode, on the remote control press **Volume-**, **BASS -**, and **TREBLE -** in sequence within three seconds.
 - ↳ When the factory settings restore is complete, the product automatically switches off and restarts.

6 Update software

To get the best features and support, update your product with the latest software.

What you need



- A USB flash drive that is FAT-formatted. Do not use a USB hard drive.
- A computer with Internet access.
- An archive utility that supports the ZIP file format.

Check software version

In HDMI ARC source, on the remote control press **TREBLE -**, **BASS -**, and **Volume-** in sequence within three seconds.

- ↳ The software version number is displayed on the display panel.

Update software via USB

- 1 Check the latest software version on www.philips.com/support.
 - Search for your model and click on "Software and drivers".
- 2 Download the software into a USB flash drive.
 - ① **Unzip the download if zipped, and make sure that the unzipped folder is named "UPG".**
 - ② **Put the "UPG" folder in the root directory.**
- 3 Connect the USB flash drive to the  (**SERVICE**) connector on this product.
- 4 Switch this product to HDMI ARC source (press **HDMI ARC**).
- 5 On the remote control, within 6 seconds press  twice then **Volume +** once, and then hold down **MOVIE**.
 - ↳ Then "UPG" (upgrade) is displayed on the display panel.
- 6 Wait until the upgrade is completed.
 - ↳ If the upgrade is complete, this product automatically turns off and on again.



Caution

- Do not turn off the power or remove the USB flash drive when the software update is in progress because you might damage this product.
- The upgrade time may take around eight minutes.

7 Wall mount your SoundBar

Before you mount your SoundBar on the wall, read all safety precautions. (see 'Safety' on page 2)

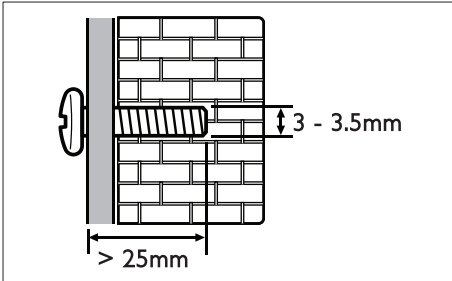
Wall mount

Note

- You must detach the portable speakers from the main unit before wall mounting or un-mounting.
- Improper wall mounting may result in accident, injury or damage. If you have any query, contact Consumer Care in your country.
- Secure the wall mount to a wall that can support the combined weight of the product and the wall mount.
- Before wall mount, you need not remove the four rubber feet at the bottom of the soundbar; otherwise the rubber feet cannot be fixed back.

Screw length/diameter

Depend on the type of wall mounting this wall mount bracket, make sure that you use screws of a suitable length and diameter:



See the illustration on the separate wall mount sheet on how to wall mount the SoundBar:

- 1) Drill holes on the wall.
- 2) Secure the wall bracket on the wall with the dowels and screws.
- 3) Hang the SoundBar on the wall bracket.

8 Product specifications

Note

- Specifications and design are subject to change without notice.

Amplifier

- Total output power: 210W RMS (+/- 0.5 dB, 30%THD) / 168W RMS (+/- 0.5 dB, 10%THD)
- Frequency response: 20 Hz-20 kHz / ± 3 dB
- Signal-to-noise ratio: > 65 dB (CCIR) / (A-weighted)
- Input sensitivity:
 - AUX: 750 mV
 - AUDIO IN: 400 mV

Audio

- S/PDIF Digital audio input:
 - Coaxial: IEC 60958-3
 - Optical: TOSLINK

Bluetooth

- Bluetooth profiles: A2DP
- Bluetooth version: 2.1 + EDR
- Frequency band/Output power: 2400 - 2483.5 MHz / ≤ 20 dBm
- NFC frequency: 13.56 MHz

Wireless speaker link

- Frequency band: 5725 - 5875 MHz
- Output power: ≤ 14 dBm

Main unit

- Power supply: 110-240V~, 50-60 Hz
- Power consumption: 50 W
- Standby power consumption: ≤ 0.5 W
- Dimensions (W x H x D): 1035 x 73 x 156 mm (with portable left and right speakers attached)
- Weight: 4.4 kg
- Built-in speakers
 - 2 x woofer (76 mm/3", 8 ohm)
 - 2 x tweeter (25.4 mm/1", 8 ohm)

Portable speakers

- Speaker impedance: 8 ohm
- Speaker drivers: 2 x 76 mm (3") full range
- Dimensions (W x H x D): 191 x 73 x 156 mm
- Weight: 0.86 kg/each

Subwoofer

- Power supply: 110-240 V~, 50-60 Hz
 - Power consumption: 30 W
 - Standby power consumption: ≤ 0.5 W
 - Impedance: 4 ohm
 - Speaker drivers: 1 x 165 mm (6.5") woofer
 - Dimensions (W x H x D): 200 x 510 x 201 mm
 - Weight: 4.9 kg
-

Wall mount

- Dimensions (W x H x D): 40 x 100 x 26.5 mm
 - Weight: 0.1 kg/each
-

Remote control batteries

- 2 x AAA-R03-1.5 V
-

Standby information

- When the product remains inactive for 15 minutes, it automatically switches to standby or networked standby.
- The power consumption in standby or networked standby is less than 0.5W.
- To deactivate Bluetooth connection, press and hold the Bluetooth button on the remote control.
- To activate Bluetooth connection, enable Bluetooth connection on your Bluetooth device, or enable Bluetooth connection via the NFC tag (if available).

9 Troubleshooting



Warning

- Risk of electric shock. Never remove the casing of the product.

To keep the warranty valid, never try to repair the product yourself.
If you have problems using this product, check the following points before you request service. If you still have a problem, get support at www.philips.com/support.

Sound

No sound from SoundBar speakers.

- Connect the audio cable from your SoundBar to your TV or other devices. However, you do not need a separate audio connection when:
 - the SoundBar and TV are connected through **HDMI ARC** connection, or

- a device is connected to the **HDMI IN** connector on your SoundBar:
- On the remote control, select the correct audio input.
- Make sure that the SoundBar is not muted.
- Reset your SoundBar to its factory settings (see 'Apply factory settings' on page 13).

No sound from the wireless portable speakers.

- Make sure that the wireless portable speaker is turned on. Press **ON** on the bottom of the wireless portable speaker.
- Dock the wireless portable speakers into the main unit to charge the battery.
- If you intend the wireless portable speaker to wirelessly connect to the main unit, make sure that you press the **SURROUND ON DEMAND** button on the wireless portable speaker.
- If you intend the wireless portable speaker to be a standalone Bluetooth speaker, make sure that you connect the portable left or right speaker to a Bluetooth device (see 'Bluetooth on a single speaker' on page 12).

No sound from the wireless subwoofer.

- Wirelessly connect the subwoofer to the main unit.

Distorted sound or echo.

- If you play audio from the TV through the SoundBar, make sure that the TV is muted.

Audio and video are not synchronized.

- Press **AUDIO SYNC +/-** to synchronize the audio with the video.
-

Bluetooth

A device cannot connect with the SoundBar.

- The device does not support the compatible profiles required for the SoundBar.
- You have not enabled the Bluetooth function of the device. See the user manual of the device on how to enable the function.
- The device is not correctly connected. Connect the device correctly.
- The SoundBar is already connected with another Bluetooth device. Disconnect the connected device, then try again.

Quality of audio play from a connected Bluetooth device is poor.

- The Bluetooth reception is poor. Move the device closer to the SoundBar, or remove any obstacle between the device and the SoundBar.

The connected Bluetooth device connects and disconnects constantly.

- The Bluetooth reception is poor; Move the device closer to the SoundBar; or remove any obstacle between the device and the SoundBar.
- Turn off Wi-Fi function on the Bluetooth device to avoid interference.
- For some Bluetooth, the Bluetooth connection can be deactivated automatically to save power. This does not indicate any malfunction of the SoundBar.

Spatial calibration

Why spatial calibration is needed?

- Spatial calibration optimizes surround sound experience if your portable left and right speakers (surround) are not properly placed.

Improvement in surround sound is not noticeable after successful spatial calibration.

- Surround sound improvement is only noticeable if the portable left and right speakers (surround) were improperly placed, or if there is strong surround effect in the music you play.

Error message is displayed on the display panel.

- If spatial calibration fails, one of the following error message is displayed. Refer to the fourth chapter (Spatial calibration) for details to recalibrate.
 - **FAIL** (fail): indicates that the portable left/right speaker is not in **SURROUND ON DEMAND** mode or out of calibration range, or there is some obstacle by which the main unit, the portable left and right speakers cannot completely "see" each other.
 - **BATT LOW** (battery low): indicates that the portable left/right speaker has low battery.
 - **ERR1** (error): indicates that the portable left and right speakers are not detached from the main unit.



For DTS patents, see <http://patents.dts.com>.
Manufactured under license from DTS Licensing Limited. DTS, the Symbol, & DTS and the Symbol together are registered trademarks, and DTS Digital Surround is a trademark of DTS, Inc. © DTS, Inc. All Rights Reserved.



Manufactured under license from Dolby Laboratories. Dolby, Pro Logic, and the double-D symbol are trademarks of Dolby Laboratories.



The terms HDMI and HDMI High-Definition Multimedia Interface, and the HDMI Logo are trademarks or registered trademarks of HDMI Licensing LLC in the United States and other countries.



The Bluetooth® word mark and logos are registered trademarks owned by Bluetooth SIG, Inc. and any use of such marks by Gibson Innovations Limited is under license. Other trademarks and trade names are those of their respective owners.



The N Mark is a trademark or registered trademark of NFC Forum, Inc. in the United States and in other countries.



© 2013 CSR plc and its group companies.
The aptX® mark and the aptX logo are trade marks of CSR plc or one of its group companies and may be registered in one or more jurisdictions.



Specifications are subject to change without notice

Copyright © 2014 Gibson Innovations Limited. Revised Edition © 2017

This product has been manufactured by, and is sold under the responsibility of Gibson Innovations Ltd., and Gibson Innovations Ltd. is the warrantor in relation to this product. Philips and the Philips Shield Emblem are registered trademarks of Koninklijke Philips N.V. and are used under license from Koninklijke Philips N.V.

B5_12_UM_V7.0

