

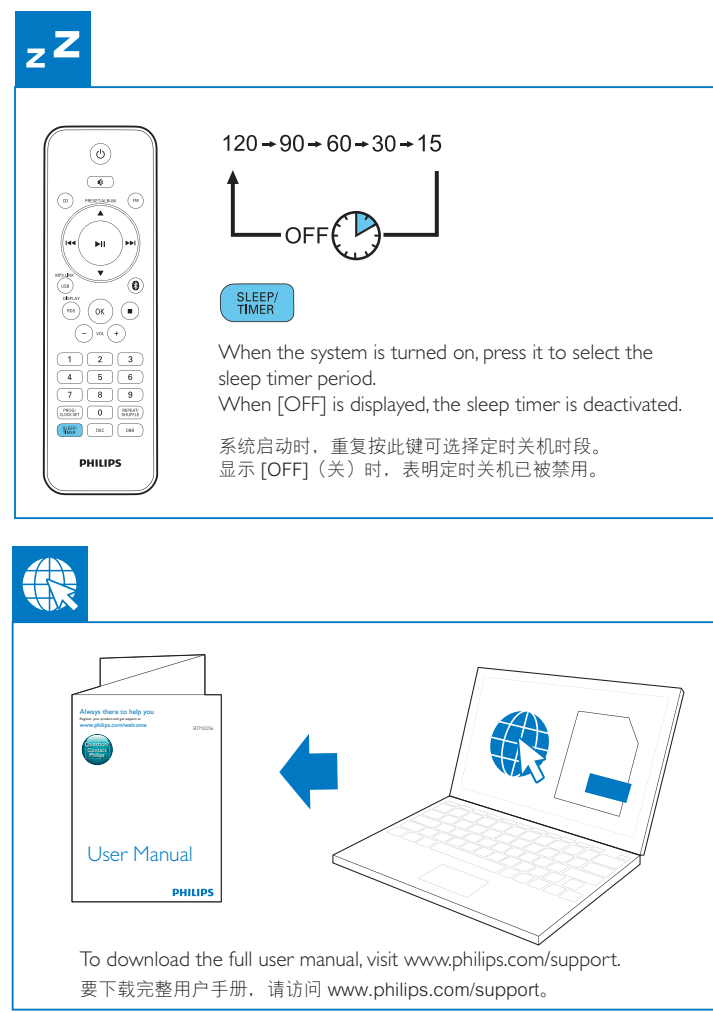
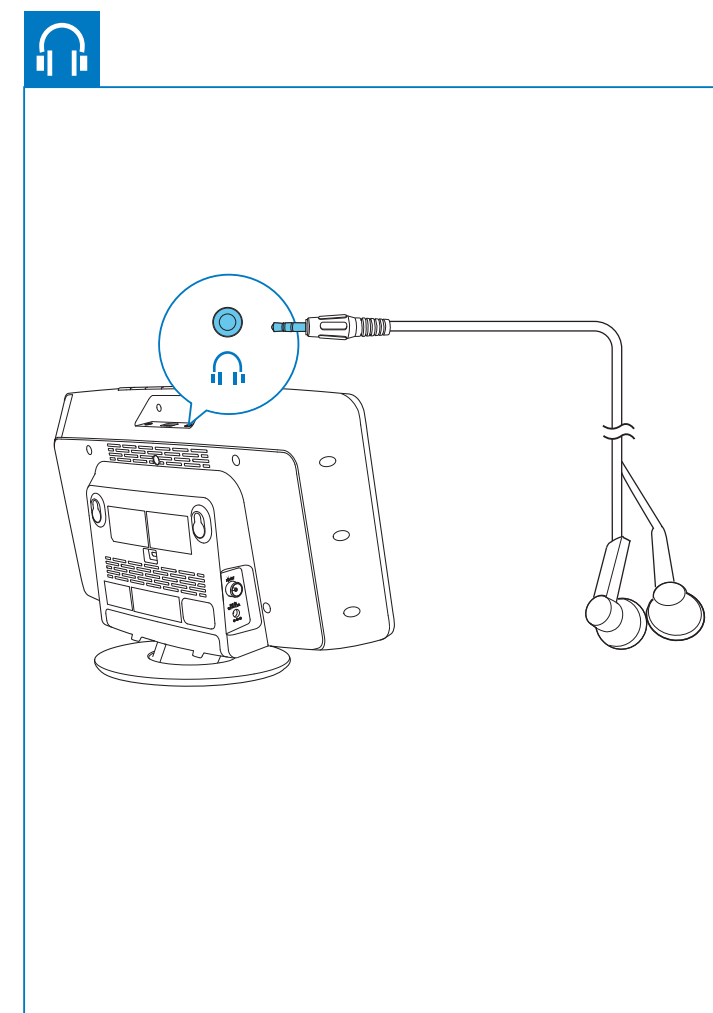
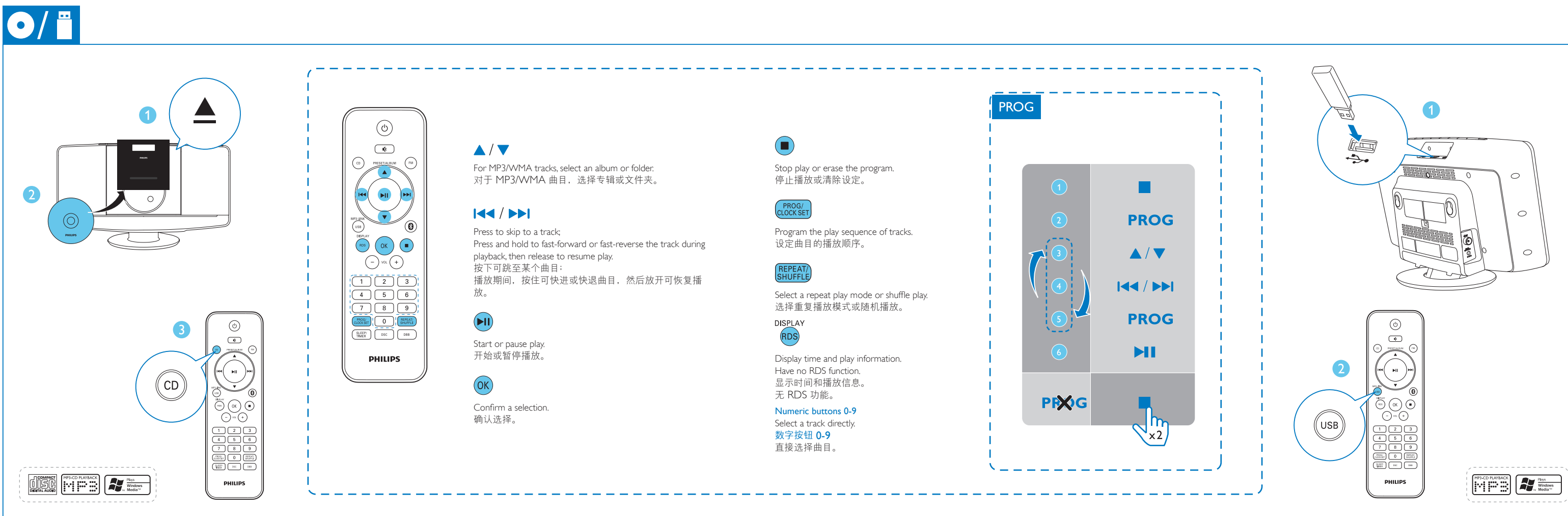
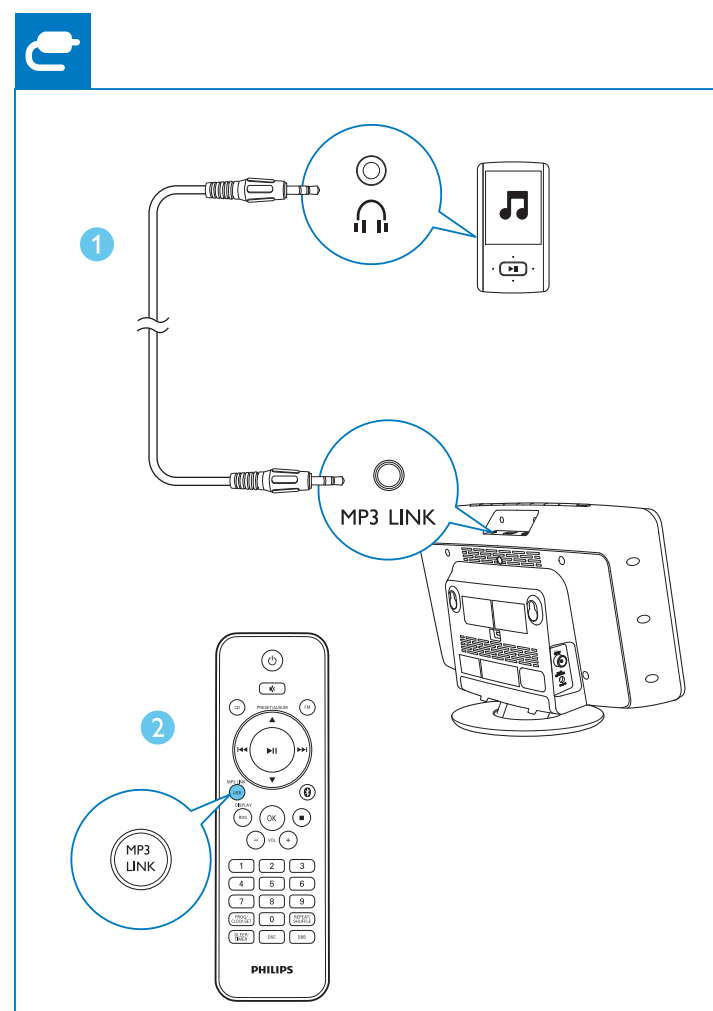
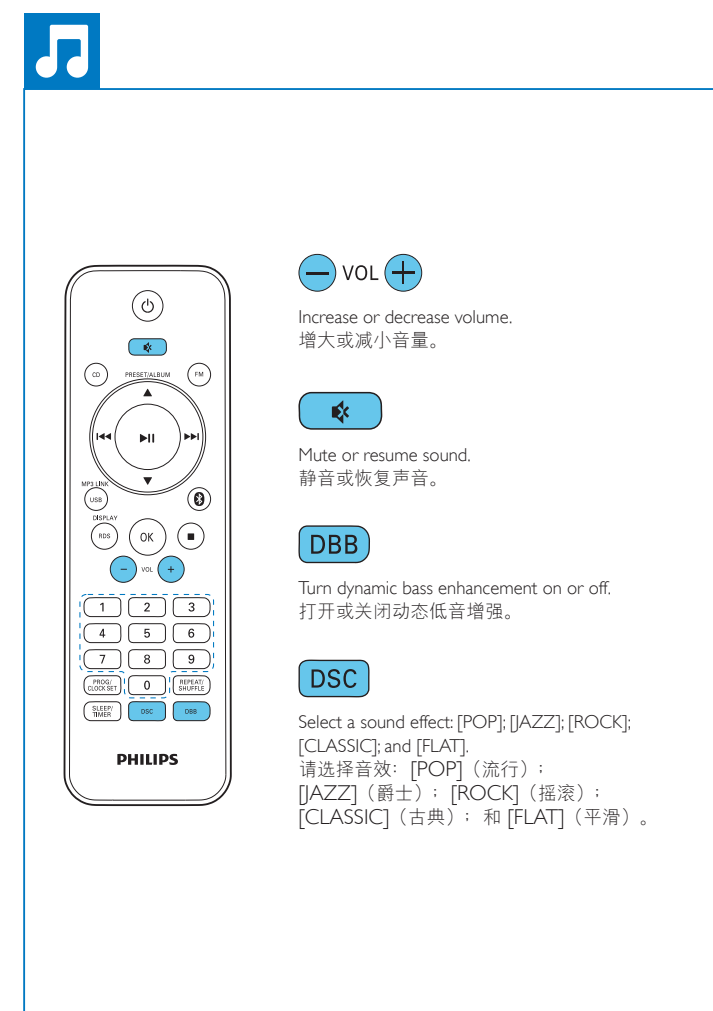
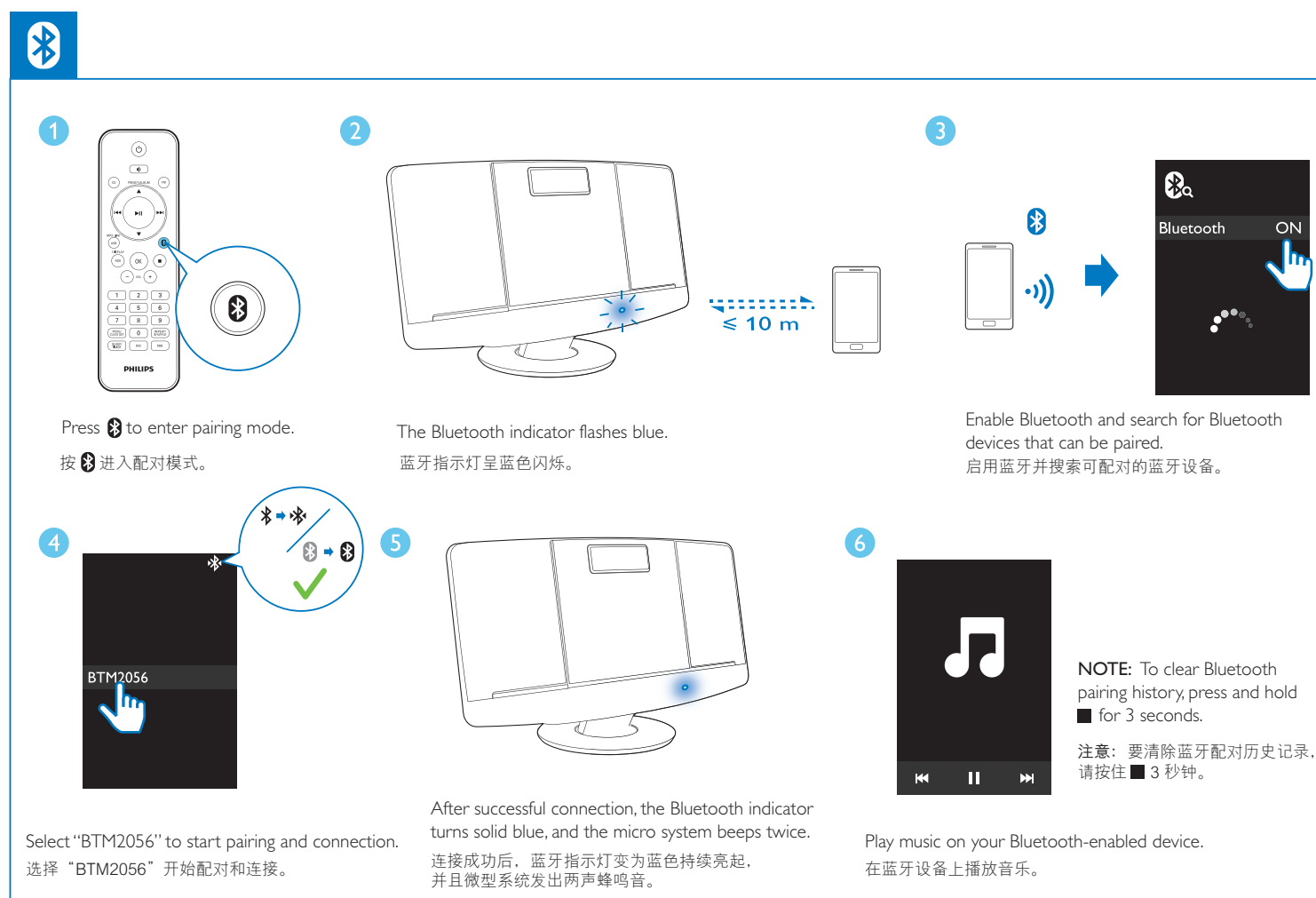
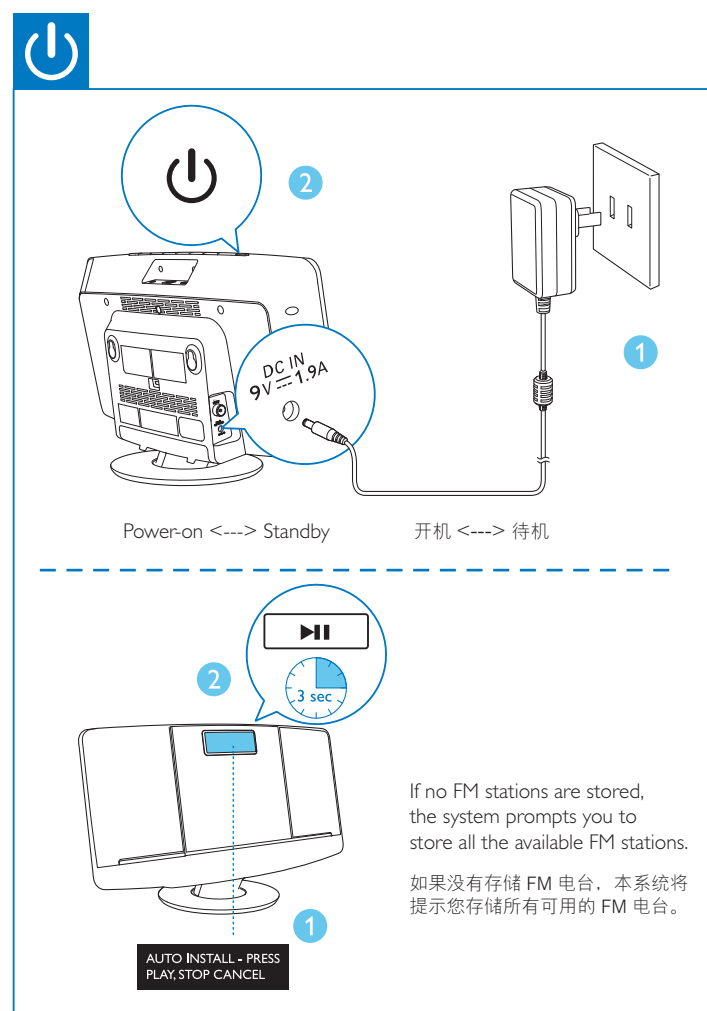
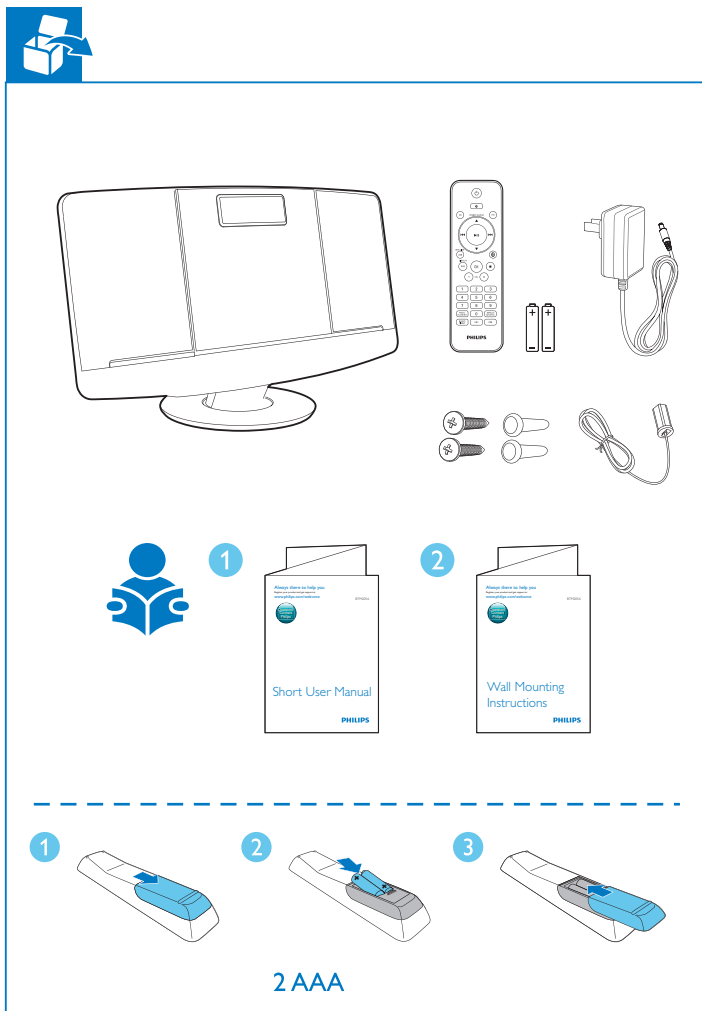
Register your product and get support at
在以下网址注册您的产品并获得支持
www.philips.com/welcome

Question?
Contact
Philips



Short User Manual 简明用户手册

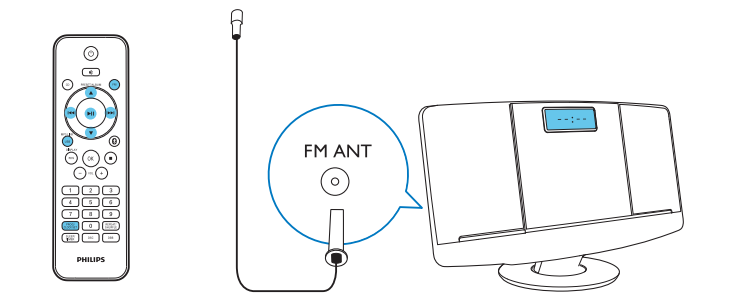
BTM2056



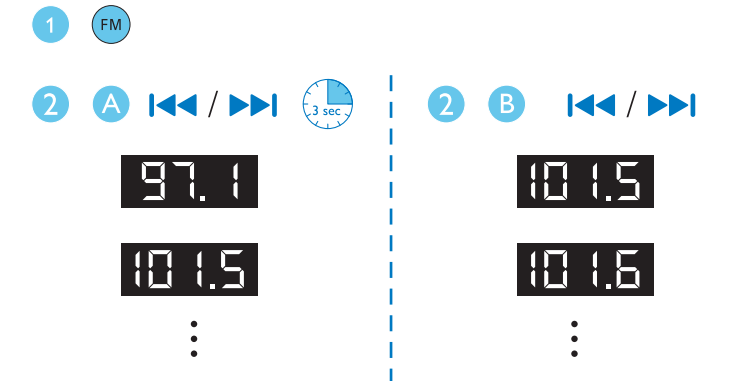
All registered and unregistered trademarks are property of their respective owners.
© 2013 Koninklijke Philips Electronics N.V.
All rights reserved.



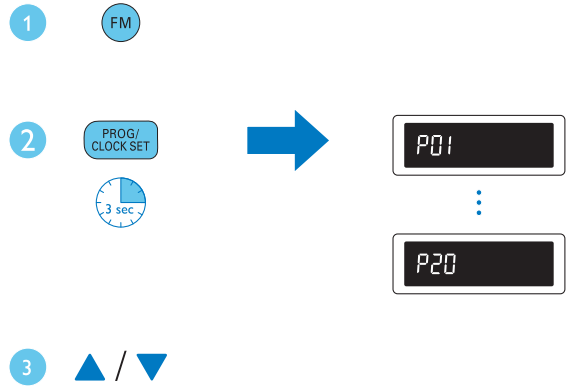
BTM2056_93_Short User Manual_V1.0



Tune to FM radio stations 调谐至 FM 电台

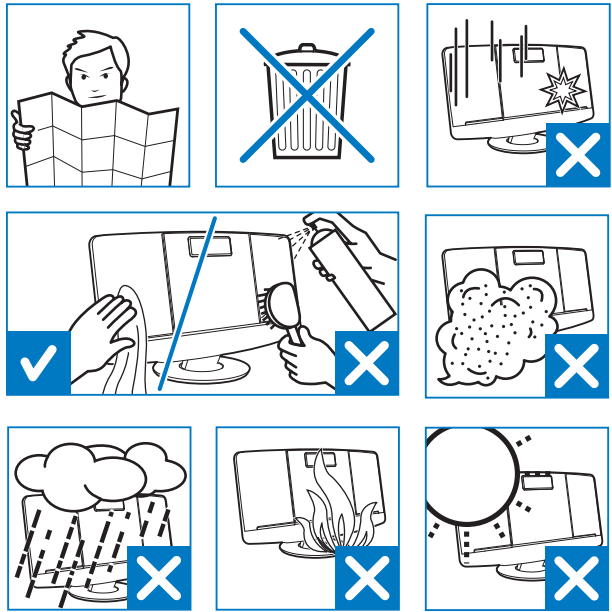
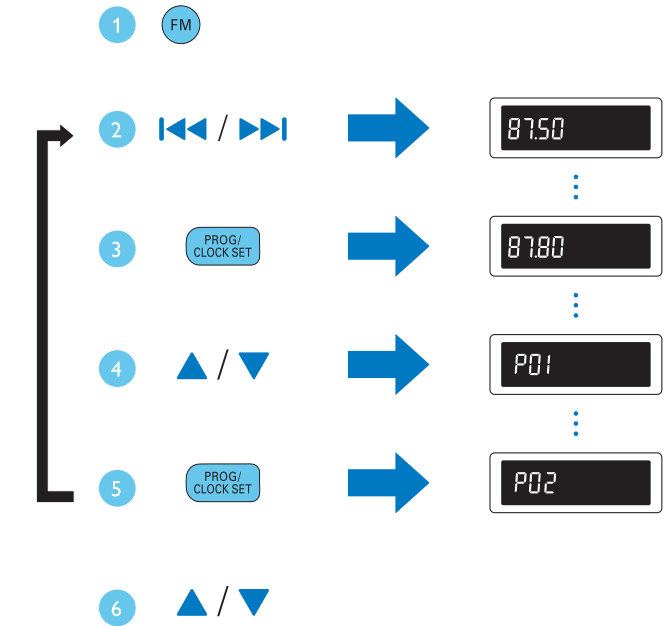


Store FM radio stations automatically 自动存储 FM 电台



Note: In FM mode, press **II** to switch between mono and stereo broadcast.
注意：在 FM 模式下，按 **II** 在单声道和立体声广播之间切换。

Store FM radio stations manually 手动存储 FM 电台



EN

1 Important



Warning

- Never remove the casing of this micro system.
 - Never lubricate any part of this system.
 - Never place this system on other electrical equipment.
 - Never look into the laser beam inside this system.
 - Keep this system away from direct sunlight, naked flames or heat.
 - Make sure that you always have easy access to the power cord, plug or adaptor to disconnect the system from the power.
- Batteries (battery pack or batteries installed) shall not be exposed to excessive heat such as sunshine, fire or the like.
 - Battery usage CAUTION – To prevent battery leakage which may result in bodily injury, property damage, or damage to the remote control:
 - Install all batteries correctly, + and - as marked on the remote control.
 - Do not mix batteries (old and new or carbon and alkaline, etc.).
 - Remove batteries when the remote control is not used for a long time.
 - Make sure that there is enough free space around the product for ventilation.
 - The system shall not be exposed to dripping or splashing.
 - Do not place any sources of danger on the system (e.g. liquid filled objects, lighted candles).
 - Where the plug of the Direct Plug-in Adapter is used as the disconnect device, the disconnect device shall remain readily operable.

Hearing safety



Caution

- To prevent possible hearing damage, do not listen at high volume levels for long periods. Set the volume to a safe level. The louder the volume, the shorter is the safe listening time.



Be sure to observe the following guidelines when using your headphones.

- Listen at reasonable volumes for reasonable periods of time.
- Be careful not to adjust the volume continuously upwards as your hearing adapts.
- Do not turn up the volume so high that you can't hear what's around you.
- You should use caution or temporarily discontinue use in potentially hazardous situations.
- Excessive sound pressure from earphones and headphones can cause hearing loss.

2 Notice

Any changes or modifications made to this device that are not expressly approved by Philips Consumer Lifestyle may void the user's authority to operate the equipment.

Disposal of your old product and batteries

Your product is designed and manufactured with high quality materials and components, which can be recycled and reused.
Never dispose of your product with other household waste. Please inform yourself about the local rules on the separate collection of electrical and electronic products and batteries. The correct disposal of these products helps prevent potentially negative consequences on the environment and human health.

Your product contains batteries, which cannot be disposed of with normal household waste. Please inform yourself about the local rules on separate collection of batteries. The correct disposal of batteries helps prevent potentially negative consequences on the environment and human health. Please visit www.recycle.philips.com for additional information on a recycling center in your area.

Environmental information

All unnecessary packaging has been omitted. We have tried to make the packaging easy to separate into three materials: cardboard (box), polystyrene foam (buffer) and polyethylene (bags, protective foam sheet.)

Your system consists of materials which can be recycled and reused if disassembled by a specialized company. Please observe the local regulations regarding the disposal of packaging materials, exhausted batteries and old equipment.

This apparatus includes this label:



This is CLASS II apparatus with double insulation, and no protective earth provided.



The making of unauthorized copies of copy-protected material, including computer programs, files, broadcasts and sound recordings, may be an infringement of copyrights and constitute a criminal offence. This equipment should not be used for such purposes.

ZH-CN

1 注意事项



警告

- 切勿拆下本微型系统的外壳。
 - 切勿润滑本系统的任何部件。
 - 切勿将本产品放在其他电器设备上。
 - 切勿直视本系统内部的激光束。
 - 切勿将系统远离阳光直射、明火或高温。
 - 确保始终可轻易地接触到电源线、电源插头或适配器，以便将本系统从电源断开连接。
- 不可将电池（电池组或安装的电池）置于高温环境，如阳光直射处、明火或类似环境。
 - 电池使用注意事项 – 为防止电池泄漏而造成人身伤害、财产损失或遥控器损坏，请：
 - 按照遥控器上标明的 + 极和 - 极，正确安装所有电池。
 - 请勿混合使用电池（旧电池与新电池或碳电池与碱性电池，等等）。
 - 若打算长期不用遥控器，应取出电池。
 - 请确保产品周围有足够的空间进行通风。
 - 切勿将系统暴露在漏水或溅水环境下。
 - 不要将任何危险源放在系统上（例如装有液体的物体、点燃的蜡烛）。
 - 主插头用作断路装置，在不使用时应将插头拔掉，应保证与电网电源完全切断。

听力安全



注意

- 为防止可能的听力受损，请勿长时间使用高音量收听。将音量设定至安全级别。音量越大，安全聆听的时间就越短。

使用耳机时请确保遵循以下准则。

- 在合理时间内以合理音量收听。
- 听力适应后，注意不要持续地调高音量。
- 请勿将音量调得太高，从而无法听见周围的声音。
- 在有潜在危险的情况下应谨慎使用或暂停使用。
- 耳机声压过大可导致听力受损。

2 注意

如果用户未经 Philips 优质生活部门的明确许可而擅自对此设备进行更改或修改，则可能导致其无权操作此设备。

旧产品和电池的处理

本产品采用可回收利用的高性能材料和组件制造而成。
切勿将本产品与其它生活垃圾一起处理。请自行了解当地关于分类收集电子、电气产品及电池的規定。正确弃置这些产品有助于避免对环境和人体健康造成潜在的负面影响。本产品所含的电池不能与一般的生活垃圾一同弃置。请自行了解当地关于分类收集电池的規定。正确弃置电池有助于避免对环境和人体健康造成潜在的负面影响。
关于您所在地区回收中心的更多信息，请访问 www.recycle.philips.com。

环境信息
已省去所有不必要的包装。我们努力使包装易于分为三种材料：纸板（盒）、泡沫塑料（缓冲物）和聚乙烯（袋、保护性泡沫片）。
您的系统包含可回收利用的材料（如果由专业公司拆卸）。请遵守当地有关包装材料、废电池和旧设备的处理的规定。

本装置包括此标签：



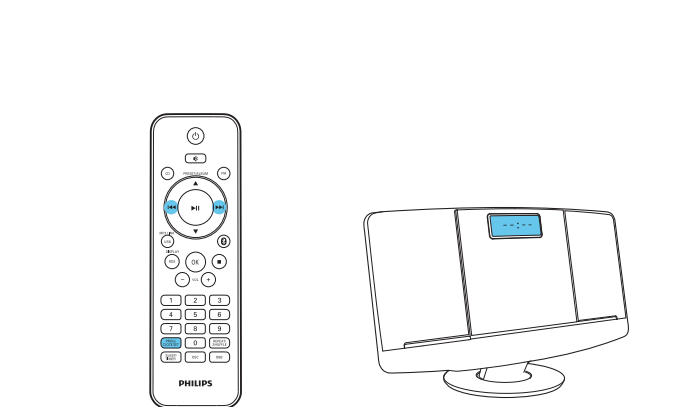
此款 II 类设备具有双重绝缘，不提供保护接地。



进行受版权保护材料（包括计算机程序、文件、广播和录音）的未经授权复制可能会侵犯版权并构成犯罪。不得将此设备用于这些目的。

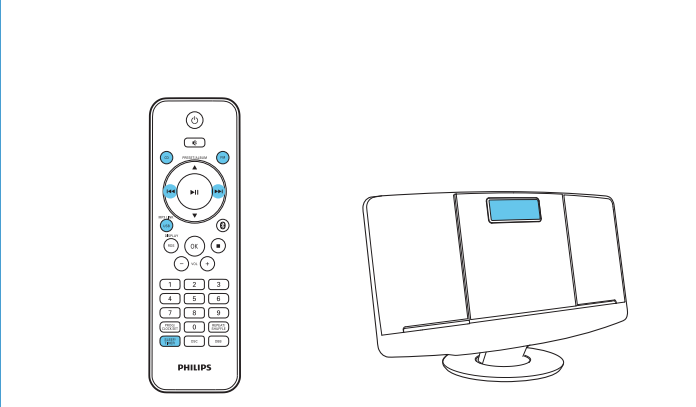
注

- 铭牌（铭牌上的信息包括工作电压）位于主机背部，使用前请了解铭牌上的相关信息。



You can only set clock in standby mode.
Repeat steps 2-3 to set the 12/24 hour format, hour, and minute.

您只能在待机模式下设置时钟。
重复步骤 2-3 以设置 12/24 小时格式、小时和分钟。



Repeat steps 4-5 to set the hour, minute, and alarm volume.

After alarm setting, press **SLEEP/TIMER** to activate or deactivate the alarm timer.

重复步骤 4-5 设置小时、分钟和闹钟音量。
设置闹钟后，按 **SLEEP/TIMER** 可启用或禁用闹钟定时。



Product information is subject to change without prior notice.

Specifications

Maximum Output Power	15 W
Frequency Response	63 -14000 Hz, -3 dB
Signal to Noise Ratio	> 57 dBA
Total Harmonic Distortion	<1%
MP3 Link Input	650 mV RMS
Disc Diameter	12 cm/8 cm
Support Disc	CD-DA, CD-R, CD-RW, MP3-CD, WMA-CD
Tuning Range	87.5 - 108 MHz
Tuning Grid	50 KHz
Sensitivity	
- Mono, 26dB S/N Ratio	<22 dBf
- Stereo, 46dB S/N Ratio	>51.5 dBf
Total Harmonic Distortion	<3%
Signal to Noise Ratio	>50 dBA
Standard (Bluetooth)	Bluetooth Standard Version 2.1+EDR
Range (Bluetooth)	10m (free space)
AC Power	Model: AS190-090-AB190; Input: 100 - 240 V ~, 50/60 Hz, 0.7 A; Output: 9 V = 1.9 A
Operation Power Consumption	15 W
Standby Power Consumption	< 0.5 W
Dimensions - Main Unit (W x H x D)	400 x 235 x 98 mm
Weight - Main Unit	2.2 kg

产品信息如有更改，恕不另行通知。

规格

最大输出功率	15 瓦
频率响应	63 -14000 赫兹，-3 dB
信噪比	>57 dBA
总谐波失真	<1%
MP3 Link 输入	650 毫伏 RMS
光盘直径	12 厘米/8 厘米
支持的光盘	CD-DA, CD-R, CD-RW, MP3-CD 和 WMA-CD
调谐范围	87.5 - 108 兆赫
调谐栅	50 千赫
灵敏度	
- 单声道, 26dB 信噪比	<22 dBf
- 立体声, 46dB 信噪比	>51.5 dBf
总谐波失真	<3%
信噪比	>50 dBA
标准	蓝牙标准版本 2.1+ EDR
频段	2.402~2.480 GHzISM 频段
范围	10 米（开阔空间）
交流电源	型号: AS190-090-AB190; 输入: 约 100 - 240 伏, 50/60 赫兹, 0.7 安; 输出: 9 伏 = 1.9 安
操作功耗	15 瓦
待机功耗	< 0.5 瓦
尺寸 - 主装置（宽 × 高 × 厚）	400 × 235 × 98 毫米
重量 - 主装置	2.2 千克

O: 表示该有毒有害物质在该部件所有均质材料中的含量均在 SJ/T11363 - 2006 标准规定的限量要求以下。
O: Indicates that this toxic or hazardous substance contained in all of the homogeneous materials for this part is below the limit requirement in SJ/T11363 - 2006.

X: 表示该有毒有害物质至少在该部件的某一均质材料中的含量超出 SJ/T11363 - 2006 标准规定的限量要求。
X: Indicates that this toxic or hazardous substance contained in at least one of the homogeneous materials used for this part is above the limit requirement in SJ/T11363 - 2006.

This logo refers to the period (10 years) during which the toxic or hazardous substances or elements contained in electronic products will not leak or mutate so that the use of these substances or elements will not result in any severe environmental pollution, any bodily injury or damage to any assets.



环保使用期限 Environmental Protection Use Period

This logo refers to the period (10 years) during which the toxic or hazardous substances or elements contained in electronic products will not leak or mutate so that the use of these substances or elements will not result in any severe environmental pollution, any bodily injury or damage to any assets.