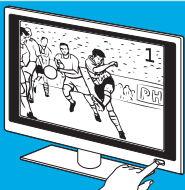


# Quick Start Guide

Getting started in five easy steps.

1



Switch on your TV.

Check if the TV responds to all key commands.

If the TV does not respond, continue with step 2.

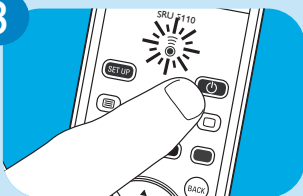
2



Press the SET UP key until the light flashes twice and then remains lit.

Look up and enter the 4-digit code for your brand of TV. See 'Code list'.

3



Press and hold the Standby key (⏻) until the TV switches off (standby). Then release the key immediately.

Note: the remote control will send multiple codes to the device trying to find the correct one.

4



Switch on your TV and check if you can operate all functions on it with the remote control.

If a key does not function properly, keep it pressed until it works. Then release the key immediately.

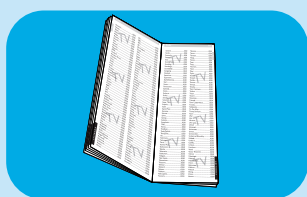
5



Keep the SET UP key pressed for 5 seconds to exit setup mode and save settings.

# Code list

Benq.....	0359
Blue Sky.....	0395
Carrefour.....	0492
First Line.....	1008
Grundig.....	1162
Hitachi.....	1251
JVC.....	1464
LG.....	1628
Loewe.....	1660
Metz.....	1810
Mivar.....	1857
Nokia.....	2017
Panasonic.....	2153
Philips.....	2195
Pioneer.....	2212
Samsung.....	2448
Sanyo.....	2462
Schneider.....	2501
Sharp.....	2550
Sierra.....	3549
Sony.....	2679
Supratech.....	2789
Technics.....	2869
Thomson.....	2972
Toshiba.....	3021



For more codes see code list in user manual.