

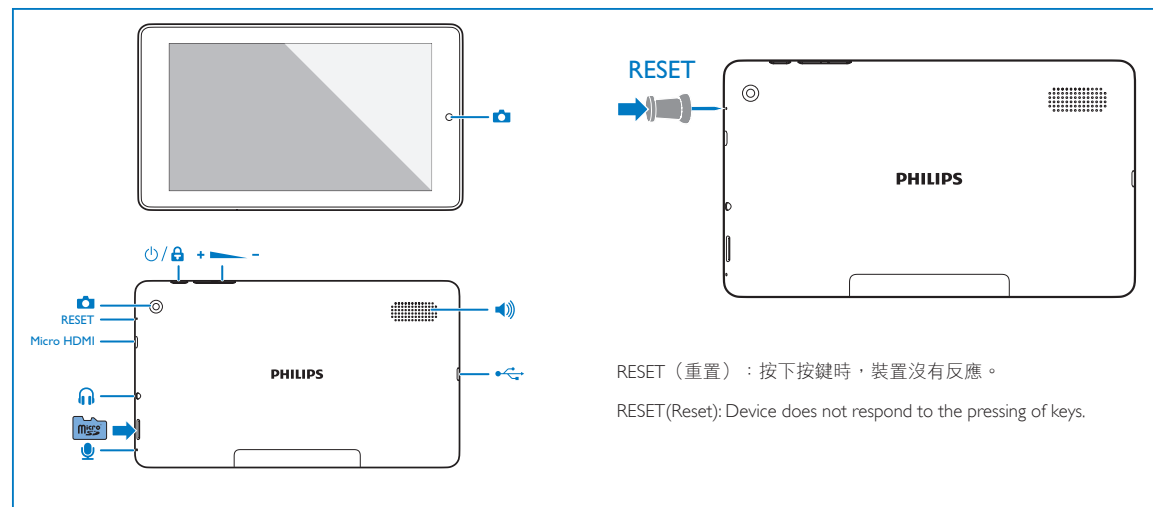
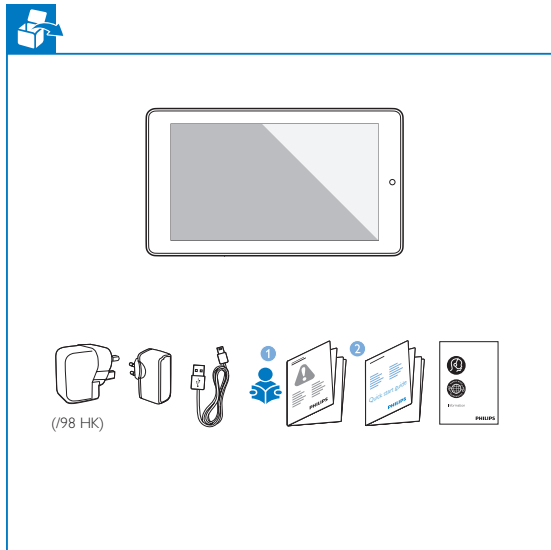
# 快速入門指南

Register your product and get support at [www.philips.com/welcome](http://www.philips.com/welcome)

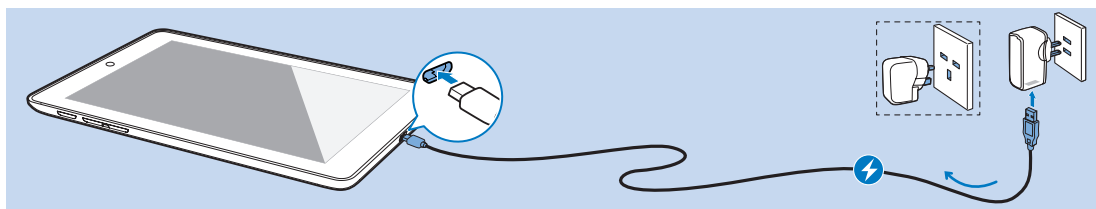


2014 © WOOX Innovations Limited. All rights reserved.  
Philips and the Philips' Shield Emblem are registered trademarks of Koninklijke Philips N.V. and are used by WOOX Innovations Limited under license from Koninklijke Philips N.V.

PI3910\_98\_QSG\_V1.0\_WK1415.3



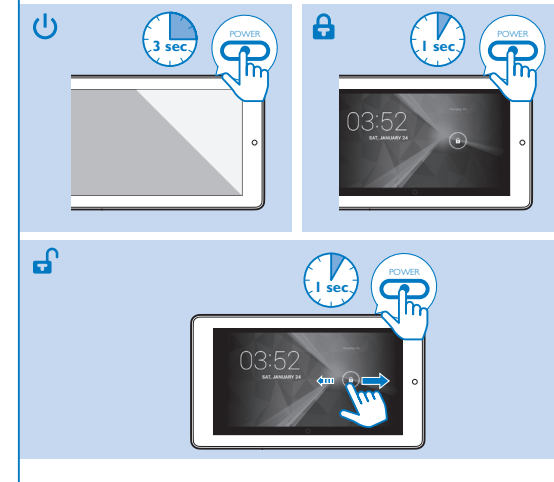
## 充電 Charge



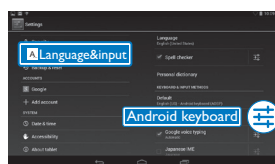
第一次使用裝置時，請使用隨附的電源變壓器為裝置充電至少5小時。  
**秘訣：**當裝置的電池過度放電時，儘管裝置已接上充電器，LCD顯示可能會因電池電量太低而無法開啟。請為裝置充電至少30分鐘，再開啟裝置電源。

The first time you use the device, use the by-packed power adapter to charge the device for more than 5 hours.  
**Tips:** When battery of the device is over-drained, the LCD display may not be turned on due to low battery level even when charger is connected. Charge the device for at least 30 minutes before you switch the device on again.

## 開機 Power/Unlock



## 選擇語言 Select languages



## 瀏覽 Navigate

在主畫面上 On the Home screen



- 8 向左/向右滑動以選擇頁面
- 8 在網路或裝置上搜尋
- 8 開始 Google 語音搜尋
- 8 前往主畫面
- 8 返回上一層或退出
- 8 切換至最近使用的應用程式

- 8 Swipe left/ right to select a page.
- 8 Search in the web or the device
- 8 Start Google Voice Search
- 8 Go to the Home screen
- 8 Back one level or exit
- 8 Switch to recent applications



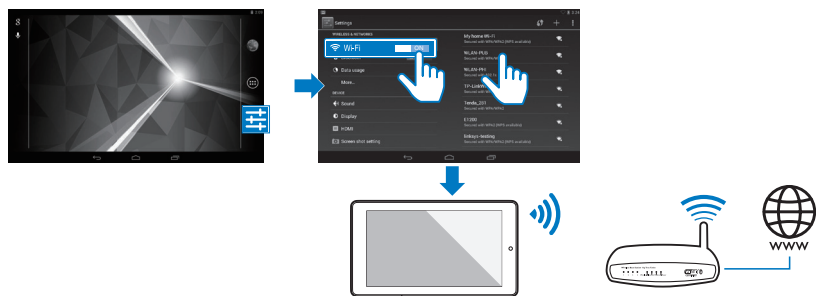
- 8 前往網頁瀏覽器
- 8 尋找所有應用程式
- 8 前往設定選單
- 8 Go to the web browser
- 8 Find all the apps
- 8 Go to the settings menu

將頂端列向下拖曳以查看事件  
Drag down the top bar to check events



使用下拉式選單存取各式功能。  
Use the drag-down menu to access functions

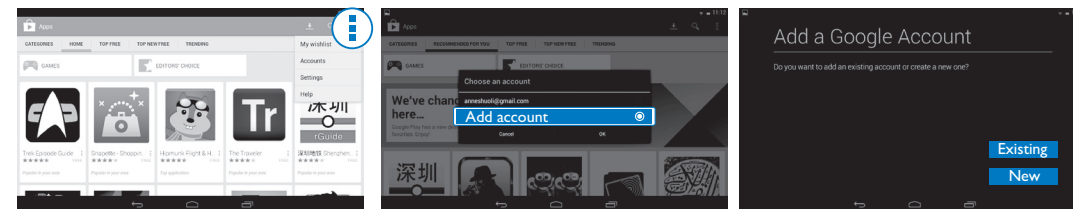
## 連接線上服務 Connect to online services



透過 Wi-Fi 將 PI3910 連線網際網路。在設定選項的快顯畫面上，拖曳滑桿以開啟 Wi-Fi 並連線至可用的網路。

Through Wi-Fi, connect PI3910 to the Internet. On the pop-up screen for setup options, drag the slider to switch on Wi-Fi and connect to an available network.

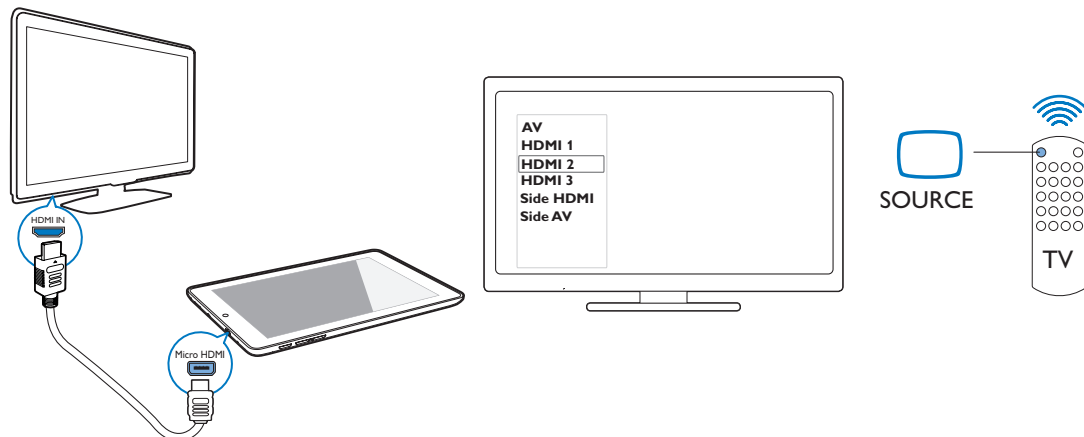
## Play 商店 Play Store



建立並登入您的 Google 帳戶。您可以存取 Google 服務並搜尋、下載與安裝應用程式。

Create and log in to your Google account. You can access Google services, and search for, download, install apps.

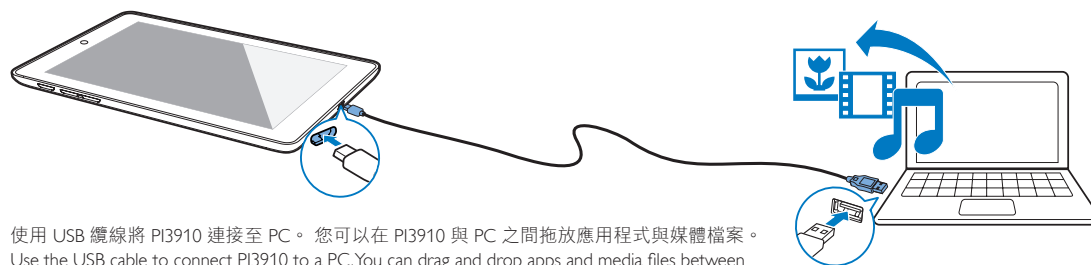
## 連接高畫質電視 (HDTV) Connect to a High-definition TV (HDTV)



使用 HDMI 纜線將 PI3910 連接至 HDTV。  
使用電視遙控器上的來源按鈕，選擇連接 PI3910 的 HDMI 輸入接頭。  
注意：使用 PI3910 上的迷你 HDMI 接頭時，短暫按下電源按鈕即可回到前一個畫面。

Use an HDMI cable to connect PI3910 with an HDTV.  
On the remote control of the TV, use the source button to select the HDMI input connector that connects PI3910.  
**Note:** On PI3910, when the Mini HDMI connector is in use, press the Power button briefly to return to the previous screen.

## 連接 PC Connect to your PC

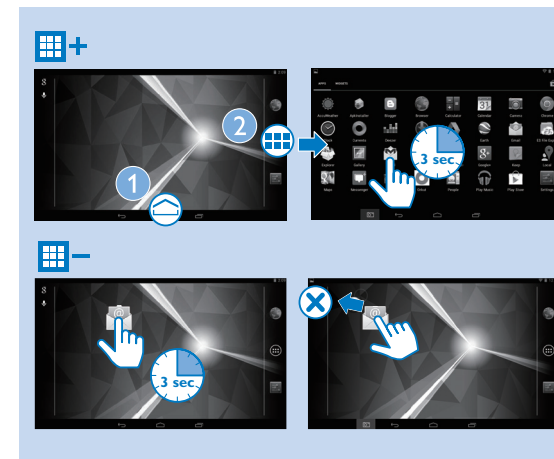


使用 USB 纜線將 PI3910 連接至 PC。您可以在 PI3910 與 PC 之間拖放應用程式與媒體檔案。  
Use the USB cable to connect PI3910 to a PC. You can drag and drop apps and media files between PI3910 and the PC.

## 管理 Organize

快速存取及整理主畫面頁面上的圖示、捷徑與 Widget。

For quick access, organize icons, shortcuts, and widgets on the pages of Home screen.



## 更多資訊 More information



若要閱讀使用手冊，請從 Play 商店下載並安裝 PDF 閱讀器，然後移至 找到此 PDF 閱讀器。  
如需支援資訊，請前往 [www.philips.com/support](http://www.philips.com/support)。

To read the User Manual, download and install a PDF reader from Play Store, and then go to 找到此 PDF 閱讀器。  
Go to [www.philips.com/support](http://www.philips.com/support) for support information.