

Always there to help you

Register your product and get support at
www.philips.com/welcome

DC390



User manual

PHILIPS

Contents

1 Important	2	8 Product information	13
Safety	2	Specifications	13
Notice	2		
2 Your Docking Entertainment System	3	9 Troubleshooting	14
Introduction	3		
What's in the box	3		
Overview of the main unit	4		
Overview of the remote control	5		
3 Get started	6		
Install batteries	6		
Prepare the remote control	7		
Connect power	7		
Set time and date	7		
Turn on	7		
4 Play	8		
Play from iPod/iPhone/iPad	8		
Play from an external device	9		
5 Listen to radio	10		
Tune to a radio station	10		
Program radio stations automatically	10		
Program radio stations manually	10		
Select a preset radio station	10		
6 Other features	11		
Set the alarm timer	11		
Set the sleep timer	11		
Adjust display brightness	12		
7 Adjust sound	12		
Adjust volume level	12		
Mute sound	12		
Select a preset sound effect	12		
Enhance bass	12		

1 Important

Safety



Warning

- Never remove the casing of this apparatus.
 - Never lubricate any part of this apparatus.
 - Never place this apparatus on other electrical equipment.
 - Keep this apparatus away from direct sunlight, naked flames or heat.
 - Ensure that you always have easy access to the power cord, plug or adaptor to disconnect the apparatus from the power.
-
- Batteries (battery pack or batteries installed) shall not be exposed to excessive heat such as sunshine, fire or the like.
 - Battery usage CAUTION – To prevent battery leakage which may result in bodily injury, property damage, or damage to the remote control:
 - Install all batteries correctly, + and - as marked on the remote control.
 - Do not mix batteries (old and new or carbon and alkaline, etc.).
 - Remove batteries when the remote control is not used for a long time.
 - Make sure that there is enough free space around the product for ventilation.
 - The system shall not be exposed to dripping or splashing.
 - Do not place any sources of danger on the system (e.g. liquid filled objects, lighted candles).
 - Where the MAINS plug or an appliance coupler is used as the disconnect device, the disconnect device shall remain readily operable.
 - The product/remote control may contain a coin/button type battery, which can be swallowed. Keep the battery out of reach of children at all times! If swallowed, the battery can cause serious injury or death.

Severe internal burns can occur within two hours of ingestion.

- If you suspect that a battery has been swallowed or placed inside any part of the body, seek immediate medical attention.
- When you change the batteries, always keep all new and used batteries out of reach of children. Ensure that the battery compartment is completely secure after you replace the battery.
- If the battery compartment cannot be completely secured, discontinue use of the product. Keep out of reach of children and contact the manufacturer.

Notice

Any changes or modifications made to this device that are not expressly approved by Philips Consumer Lifestyle may void the user's authority to operate the equipment.

Disposal of your old product and batteries

Your product is designed and manufactured with high quality materials and components, which can be recycled and reused.

Never dispose of your product with other household waste. Please inform yourself about the local rules on the separate collection of electrical and electronic products and batteries. The correct disposal of these products helps prevent potentially negative consequences on the environment and human health.

Your product contains batteries, which cannot be disposed of with normal household waste. Please inform yourself about the local rules on separate collection of batteries. The correct disposal of batteries helps prevent potentially negative consequences on the environment and human health.

Please visit www.recycle.philips.com for additional information on a recycling center in your area.



Caution

- Removal of the built-in battery invalidates the warranty and may destroy the product.

Environmental information

All unnecessary packaging has been omitted. We have tried to make the packaging easy to separate into three materials: cardboard (box), polystyrene foam (buffer) and polyethylene (bags, protective foam sheet.)

Your system consists of materials which can be recycled and reused if disassembled by a specialized company. Please observe the local regulations regarding the disposal of packaging materials, exhausted batteries and old equipment.

Made for



“Made for iPod,” “Made for iPhone,” and “Made for iPad” mean that an electronic accessory has been designed to connect specifically to iPod, iPhone, or iPad, respectively, and has been certified by the developer to meet Apple performance standards. Apple is not responsible for the operation of this device or its compliance with safety and regulatory standards. Please note that the use of this accessory with iPod, iPhone, or iPad may affect wireless performance.

iPod and iPhone are trademarks of Apple Inc., registered in the U.S. and other countries. iPad is a trademark of Apple Inc.

Class II equipment symbol:



CLASS II apparatus with double insulation, and no protective earth provided.



Note

- The type plate is located on the bottom of the product.

2 Your Docking Entertainment System

Congratulations on your purchase, and welcome to Philips! To fully benefit from the support that Philips offers, register your product at www.philips.com/welcome.

Introduction

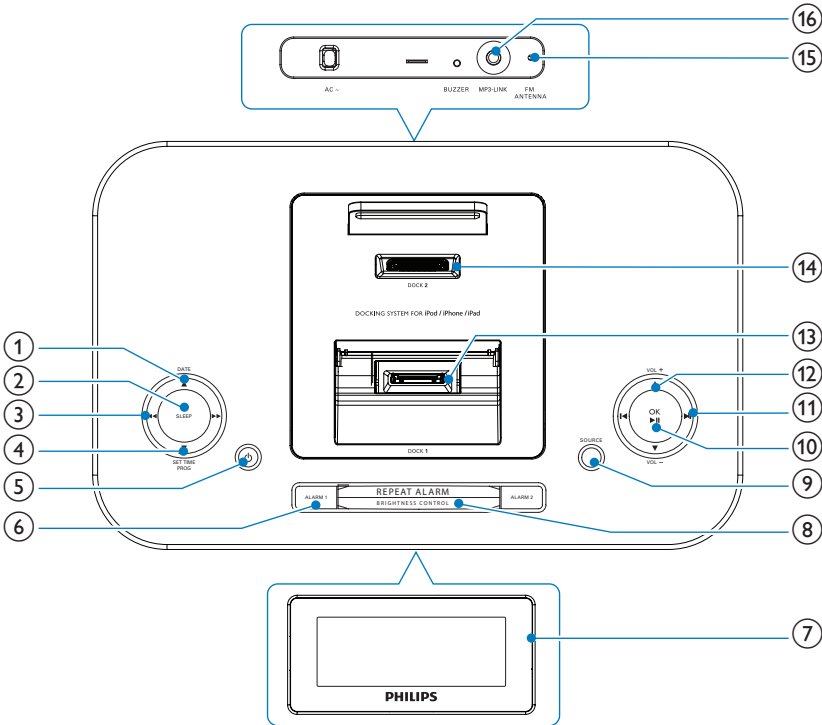
With this unit, you can enjoy audio from iPod, iPhone, iPad, radio, or other audio devices. The radio, iPod, iPhone, or iPad can be set as the alarm timer. You can set two alarm timers to go off at different time.

What's in the box

Check and identify the contents of your package:

- Main unit
- Remote control
- 1 x MP3 link cable
- Short user manual

Overview of the main unit



① ▲ /DATE

- View the clock time and date.

② SLEEP

- Set the sleep timer.

③ ◀▶

- Search within an audio file.
- Tune to a radio station.

④ ▼ /SET TIME/PROG

- Set the clock and date.
- Program radio stations.

⑤ ⏻

- Turn on the unit or switch to standby mode.
- Deactivate the sleep timer.
- Stop alarm.

⑥ ALARM 1/ALARM 2

- Set the alarm timer.
- Turn off the alarm tone.
- View alarm settings.

⑦ Display panel

- Show the status.

⑧ REPEAT ALARM/BRIGHTNESS CONTROL

- Repeat the alarm.
- Adjust the display brightness.

⑨ SOURCE

- Select a source: DOCK 1, DOCK 2, FM tuner, or MP3 link.

⑩ OK /▶▶

- Start or pause iPod/iPhone/iPad play.
- Confirm selection.

- Select FM stereo or FM mono.

⑪ **◀ / ▶**

- Skip to the previous/next audio file.
- Select a preset radio station.
- Adjust time.

⑫ **VOL +/-**

- Adjust volume.

⑬ **Dock1**

- Load an iPod/iPhone.

⑭ **Dock2**

- Load an iPod/iPhone/iPad.

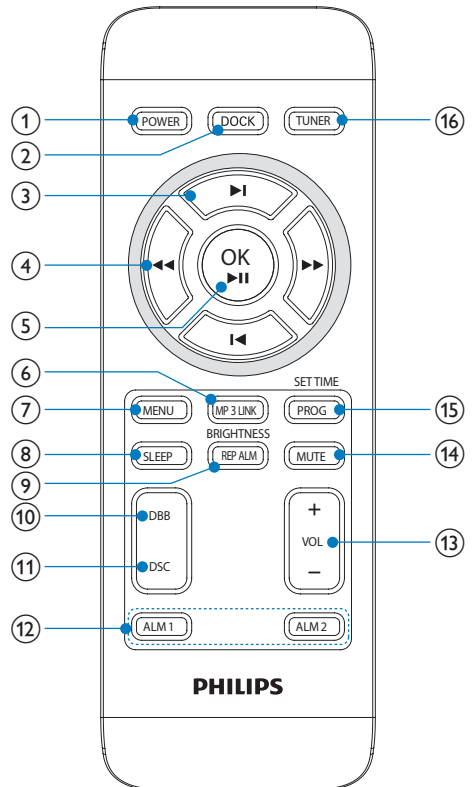
⑮ **FM antenna**

- Improve FM reception.

⑯ **MP3-LINK**

- Jack for an external audio device.

Overview of the remote control



① **POWER**

- Turn on the unit or switch to standby mode.
- Stop alarm.
- Deactivate the sleep timer.

② **DOCK**

- Select Dock1 or Dock2 source.

③ **◀ / ▶**

- Skip to the previous/next audio file.
- Select a preset radio station.
- Navigate through the iPod/iPhone/iPad menu.
- Adjust time.

- ④ ◀▶
 - Search within an audio file.
 - Tune to a radio station.
- ⑤ OK/▶||
 - Start or pause iPod/iPhone/iPad play.
 - Confirm selection.
 - Select FM stereo or FM mono.
- ⑥ MP3 LINK
 - Select external audio device source.
- ⑦ MENU
 - Select the iPod/iPhone menu.
- ⑧ SLEEP
 - Set the sleep timer.
- ⑨ BRIGHTNESS/REP ALM
 - Adjust the display brightness.
 - Repeat the alarm.
- ⑩ DBB
 - Turn on or off dynamic bass enhancement.
- ⑪ DSC
 - Select a preset sound setting.
- ⑫ ALM 1/ALM 2
 - Set the alarm timer.
 - Turn off the alarm tone.
 - View alarm settings.
- ⑬ VOL +/-
 - Adjust volume.
- ⑭ MUTE
 - Mute volume.
- ⑮ SET TIME/PROG
 - Set the clock and date.
 - Program radio stations.
- ⑯ TUNER
 - Select the tuner source.

3 Get started

! Caution

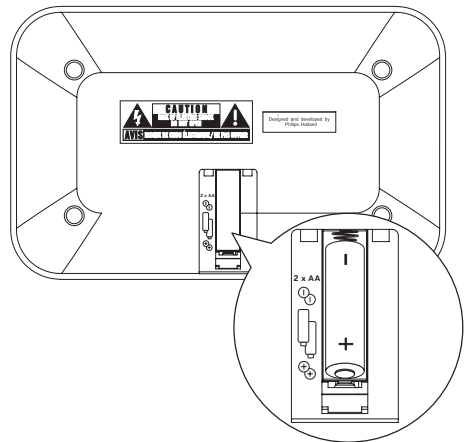
- Use of controls or adjustments or performance of procedures other than herein may result in hazardous radiation exposure or other unsafe operation.

Always follow the instructions in this chapter in sequence.

Install batteries

☰ Note

- You can only use AC power as power supply. Batteries (not supplied) are for backup purpose.



- 1 Open the battery compartment.
- 2 Insert 2 x R6/UM-3/AA size batteries with correct polarity (+/-) as indicated.
- 3 Close the battery compartment.

! Caution

- Remove battery if it is exhausted or will not be used for a long time.
- Batteries contain chemical substances, so they should be disposed of properly.
- Perchlorate Material-special handling may apply. See www.dtsc.ca.gov/hazardouswaste/perchlorate.

Prepare the remote control

! Caution

- Risk of explosion! Keep batteries away from heat, sunshine, or fire. Never discard batteries in fire.

- 1 Open the battery compartment.
- 2 Insert one button battery with correct polarity (+/-) as indicated.
- 3 Close the battery compartment.

≡ Note

- If you are not going to use the remote control for a long time, remove the batteries.

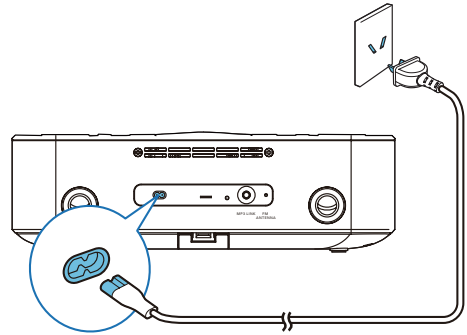
Connect power

! Caution

- Risk of product damage! Ensure that the power voltage corresponds to the voltage printed on the back or underside of the apparatus.
- Risk of electric shock! When you unplug the AC power cord, always pull the plug from the socket. Never pull the cord.
- Before connecting the AC power cord, ensure you have completed all other connections.

≡ Note

- The type plate is located on the bottom of the main unit.



- 1 Connect the AC power cord to the wall outlet.

Set time and date

- 1 In standby mode, press and hold **SET TIME** for two seconds.
↳ The hour digits begin to blink.
- 2 Press **▶||** to select the 12/24 hour format.
- 3 Press **◀|** / **▶|** to set the hour.
- 4 Press **SET TIME** to confirm.
↳ The minutes digits begin to blink.
- 5 Repeat steps 3-4 to set the minute, year, month, and day.

✱ Tip

- In 12 hour format, [MONTH--DAY] is displayed.
- In 24 hour format, [DAY--MONTH] is displayed.
- You can press **▶||** to toggle between 12 hour format and 24 hour format during the whole process.

Turn on

- 1 Press **POWER**.
↳ The unit switches to the last selected source.

Switch to standby

- 1 Press **POWER** again to switch the unit to standby mode.
 - ↳ The time and date (if set) appear on the display panel.

4 Play

Play from iPod/iPhone/iPad

You can enjoy audio from iPod/iPhone/iPad through this unit.

Compatible iPod/iPhone/iPad

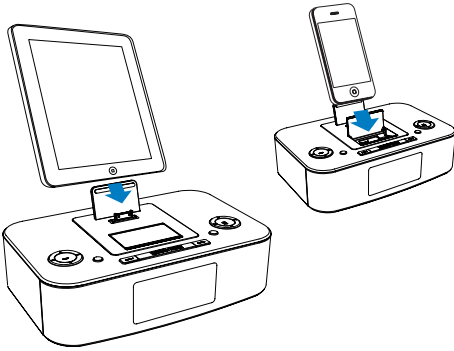
Apple iPod and iPhone models with a 30-pin dock connector:

Made for:

- iPod with video
- iPod nano (6th generation)
- iPod nano (5th generation)
- iPod nano (4th generation)
- iPod nano (3rd generation)
- iPod nano (2nd generation)
- iPod nano (1st generation)
- iPod classic
- iPod Touch (4th generation)
- iPod Touch (3rd generation)
- iPod Touch (2nd generation)
- iPod Touch (1st generation)
- iPod mini
- iPhone
- iPhone 3G
- iPhone 3GS
- iPhone 4
- iPhone 4S
- iPad

Listen to the iPod/iPhone/iPad

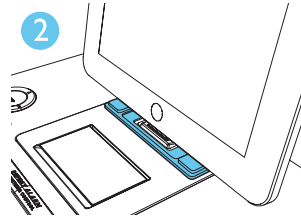
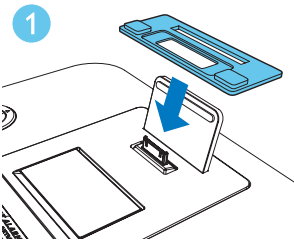
- 1 Place the iPod/iPhone/iPad into the dock.
- 2 Press **DOCK** button to select dock source.



- To pause/resume play, press **OK/▶||**.
- To skip to a track, press **◀/▶**.
- To search during play, press and hold **◀◀/▶▶**, then release to resume normal play.
- To go back to the previous iPod/iPhone menu, press **MENU**.
- To scroll through the menu, press **◀/▶**.
- To confirm a selection, press **OK/▶||**.
↳ If no key is pressed for more than 10 seconds, **OK/▶||** acts back as the play/pause key.

Install rubber pad

If necessary, install the supplied rubber pad to keep the iPad stable before you place the iPad.



Charge the iPod/iPhone/iPad

When the unit is connected to power, the docked iPod/iPhone/iPad begins to charge.

Tip

- For certain iPod models, it may take up to a minute before the charging indication appears.
- If clock is not manually set, when iPod/iPhone/iPad is connected, the clock radio synchronizes time from the iPod/iPhone/iPad automatically.

Play from an external device

You can also listen to an external audio device through this unit.

- 1 Connect the supplied MP3 link cable to:
 - the **MP3 LINK** jack (3.5mm) on the back of the unit.
 - the headphone jack on an external device.
- 2 Press **MP3 LINK** to select the MP3 link source.
- 3 Start to play the device (see the device user manual).

5 Listen to radio

Note

- Only FM radio reception is available on this unit.

Tune to a radio station

Tip

- Position the antenna as far as possible from TV, VCR or other radiation source.

Note

- For optimal reception, fully extend and adjust the position of the antenna.

- 1 Press **TUNER** to select FM tuner.
- 2 Press and hold **◀▶** for more than 2 seconds.
 - ↳ [SRCH] (search) is displayed.
 - ↳ The radio tunes to a station with strong reception automatically.
- 3 Repeat step 2 to tune to more stations.
 - To tune to a weak station, press **◀▶** repeatedly until you find optimal reception.

Tip

- [STEREO] is default setting for tuner mode.
- Under tuner mode, you can press **OK** repeatedly to toggle between [STEREO] and [MONO], and the unit memorizes your setting even if you turn off the unit or turn to other sources.

Program radio stations automatically

You can program a maximum of 20 preset radio stations.

- 1 In the tuner mode, press and hold **SET TIME/PROG** for more than 2 seconds to activate automatic program mode.
 - ↳ [AUTO] (auto) is displayed.
 - ↳ The unit automatically stores radio stations with sufficient signal strength.
 - ↳ The first programmed radio station is broadcast automatically.

Program radio stations manually

You can program a maximum of 20 preset radio stations.

- 1 Tune to a radio station.
- 2 Press **SET TIME/PROG** to activate the program mode.
- 3 Press **◀▶** to select a number.
- 4 Press **SET TIME/PROG** to confirm.
- 5 Repeat the above steps to program other stations.

Tip

- To overwrite a programmed station, store another station in its place.
- To select FM stereo or FM mono, press **OK**.

Select a preset radio station

- 1 Press **◀▶** to select a preset number.

6 Other features

Set the alarm timer

You can set two alarms which go off at different time.

- 1 Make sure that you have set the clock correctly. (See "Get started - Set time and date".)
- 2 Press and hold **ALM 1** or **ALM 2** for two seconds.
↳ [AL 1] or [AL 2] begin to blink.
- 3 Press **SOURCE** on the top panel to select an alarm sound source: DOCK1, DOCK2, FM tuner; or buzzer.
- 4 Press **ALM 1** or **ALM 2**.
↳ The hour digits begin to blink.
- 5 Press **◀/▶** repeatedly to set the hour.
- 6 Press **ALM 1** or **ALM 2** to confirm.
↳ The minute digits begin to blink.
- 7 Repeat steps 5-6 to set the minute.
- 8 Repeat steps 5-6 to select whether to ring alarm the whole week, on weekdays, or at weekend.
- 9 Repeat steps 5-6 to set the alarm volume.



Tip

- You can create a playlist in iTunes called "PHILIPS" and import it to your iPod/iPhone as alarm source.
- If no playlist is created in the iPod/iPhone or there is no song in the playlist, the unit will wake to songs in the iPod/iPhone.

Activate and deactivate the alarm timer

- 1 Press **ALM 1** or **ALM 2** repeatedly to activate or deactivate the timer.
↳ If the timer is activated, [**🔔** AL 1] or [**🔔** AL2] is displayed.

↳ If the timer is deactivated, [AL1] or [AL2] is displayed.

Repeat alarm

- 1 When the alarm rings, press **BRIGHTNESS/REP ALM**.
↳ The alarm repeats ringing minutes later.



Tip

- You can press **◀/▶** to adjust the interval to repeat alarm.

Stop alarm ring

- 1 When the alarm rings, press the corresponding **ALM 1** or **ALM 2**.
↳ The alarm stops but the alarm settings remain.

View the alarm settings

- 1 Press **ALM 1** or **ALM 2**.

Set the sleep timer

This unit can switch to standby automatically after a set period of time.

- 1 Press **SLEEP** repeatedly to select from 120, 90, 60, 30 and 15 minutes.
↳ When the sleep timer is activated, the display shows **zzz**.

To deactivate sleep timer

- 1 Press **SLEEP** repeatedly until [OFF] (off) is displayed.
↳ The sleep timer is deactivated, **zzz** disappears on the display.

Adjust display brightness

- 1 Press **BRIGHTNESS/REP ALM** repeatedly to select different levels of display brightness.

7 Adjust sound

Adjust volume level

- 1 During play, press **VOL +/-** to increase/decrease the volume level.

Mute sound

- 1 During play, press **MUTE** to mute/unmute sound.

Select a preset sound effect

- 1 During play, press **DSC** repeatedly to select:
 - **[ROCK]** (rock)
 - **[JAZZ]** (jazz)
 - **[POP]** (pop)
 - **[CLASSIC]** (classic)
 - **[FLAT]** (flat)

Enhance bass

- 1 During play, press **DBB** to turn on or off dynamic bass enhancement.
↳ If DBB is activated, **[DBB]** is displayed.

8 Product information



Note

- Product information is subject to change without prior notice.

Specifications

Amplifier

Rated Output Power	2 x 5 W RMS
Frequency Response	40 -20000 Hz, -3dB
Signal to Noise Ratio	>67 dB
Aux Input (MP3 link)	750 mV RMS 20 kohm

FM

Tuning Range	FM 87.5 - 108 MHz
Tuning grid	50 KHz
- Mono, 26 dB S/N Ratio	<22 dB
- Stereo, 46 dB S/N Ratio	<51 dB
Search Sensitivity	<41 dB
Total Harmonic Distortion	<2%
Signal to Noise Ratio	>45 dB

Speakers

Speaker Impedance	4 ohm
Speaker Driver	57mm
Sensitivity	>84dB/m/W

General information

AC power	100~240V, 50/60 Hz
Operation Power Consumption	17 W
Standby Power Consumption (clock display)	<1 W
Dimensions	
- Main Unit (W x H x D)	263 x114 x 165 mm
Weight	
- With Packaging	2.4 kg
- Main Unit	1.4 kg

9 Troubleshooting



Warning

- Never remove the casing of this apparatus.

To keep the warranty valid, never try to repair the system yourself.

If you encounter problems when using this apparatus, check the following points before requesting service. If the problem remains unsolved, go to the Philips web site (www.philips.com/welcome). When you contact Philips, ensure that the apparatus is nearby and the model number and serial number are available.

No power

- Ensure that the AC power plug of the unit is connected properly.
- Ensure that there is power at the AC outlet.
- Ensure that the batteries are inserted correctly.

No sound

- Adjust the volume.

No response from the unit

- Disconnect and reconnect the AC power plug, then turn on the unit again.

Poor radio reception

- Increase the distance between the unit and your TV or VCR.
- Fully extend the FM antenna.

Timer does not work

- Set the clock correctly.
- Switch on the timer.

Clock/timer setting erased

- Power has been interrupted or the power plug has been disconnected.
- Reset the clock/timer.



Specifications are subject to change without notice
© 2013 Koninklijke Philips Electronics N.V.
All rights reserved.

DC390_77_UM_V1.0

