

Question?
Contact
Philips



Short User Manual

PHILIPS

1 Short User Manual
2 Wall Mounting Instructions

1 2 3
2 AAA

Power-on <--> Standby

DC IN 9V 1.9A

3 sec

1 AUTO INSTALL - PRESS PLAY, STOP, CANCEL

If no FM stations are stored, the system prompts you to store all the available FM stations.

1 Press **3** to enter pairing mode.

2 The Bluetooth indicator flashes blue.

3 Enable Bluetooth and search for Bluetooth devices that can be paired.

4 Select "BTM2056" to start pairing and connection

5 After successful connection, the Bluetooth indicator turns solid blue, and the micro system beeps twice.

6 Play music on your Bluetooth-enabled device.

NOTE: To clear Bluetooth pairing history, press and hold **3** for 3 seconds.

VOL Increase or decrease volume.

MUTE Mute or resume sound.

DBB Turn dynamic bass enhancement on or off.

DISC Select a sound effect: [POP], [JAZZ], [ROCK], [CLASSIC], [FLAT].



1

2

3 CD

PHILIPS

PROG

1 Press **PROG** to skip to a track.
Press and hold to fast-forward or fast-reverse the track during playback, then release to resume play.

2 Press **PROG** for MP3/WMA tracks, select an album or folder.

3 Press **PROG** to start or pause play.

4 Press **PROG** to stop play or erase the program.

5 Press **PROG** to confirm a selection.

6 Press **PROG** to select a track directly.

REPEAT/SHUFFLE Select a repeat play mode or shuffle play.

PROG/CLOCK SET Program the play sequence of tracks.

DISPLAY Display time and play information.

1

2 USB

PHILIPS

1 MP3 LINK

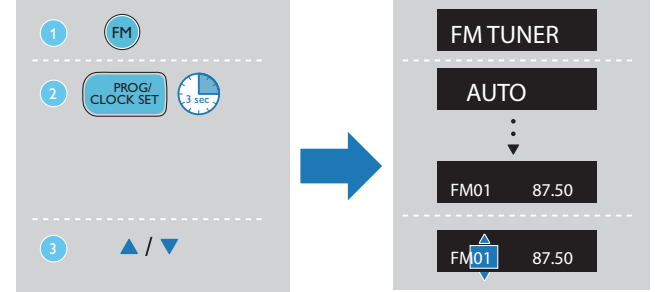
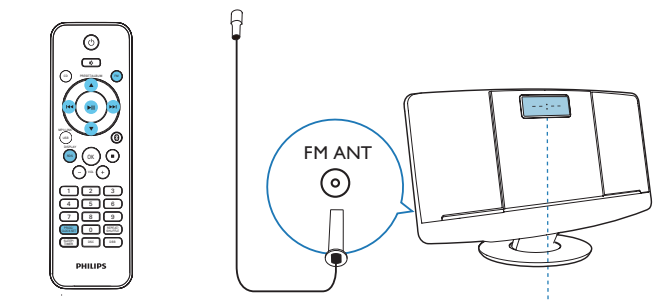
2 MP3 LINK

PHILIPS



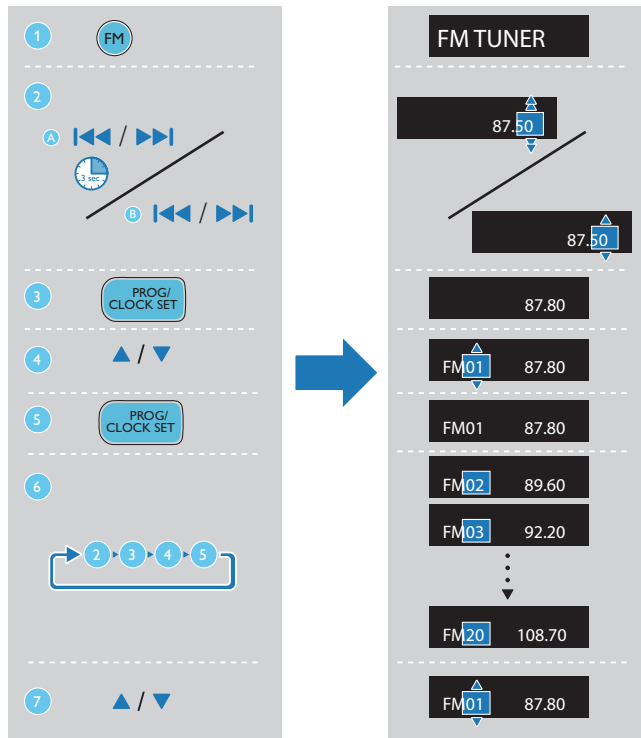


Store FM radio stations automatically

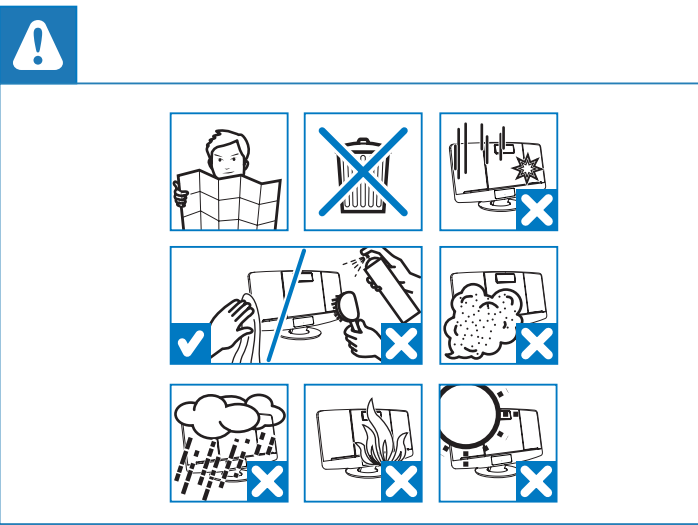
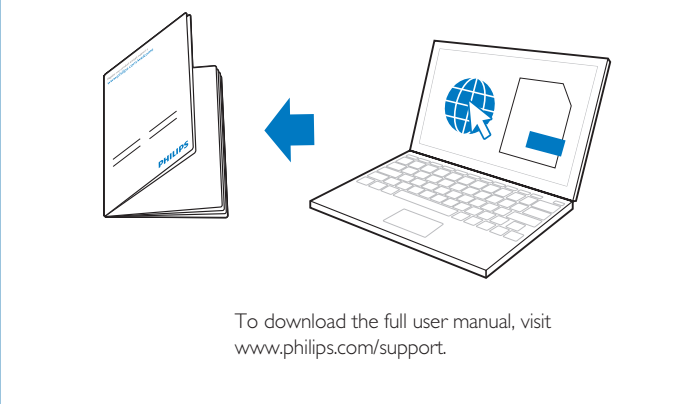
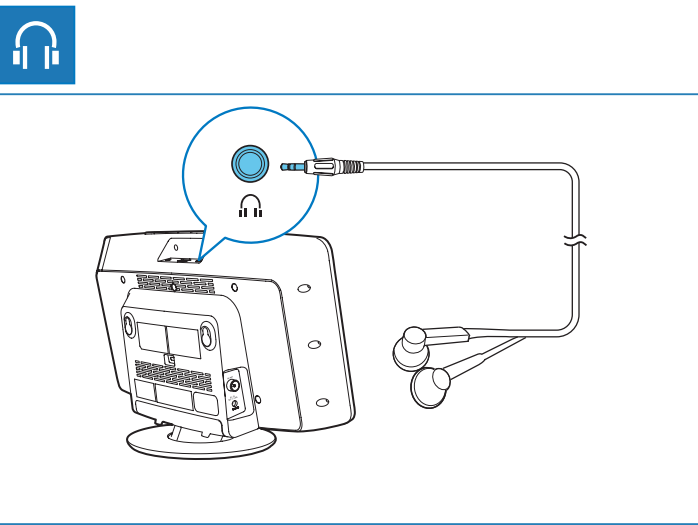
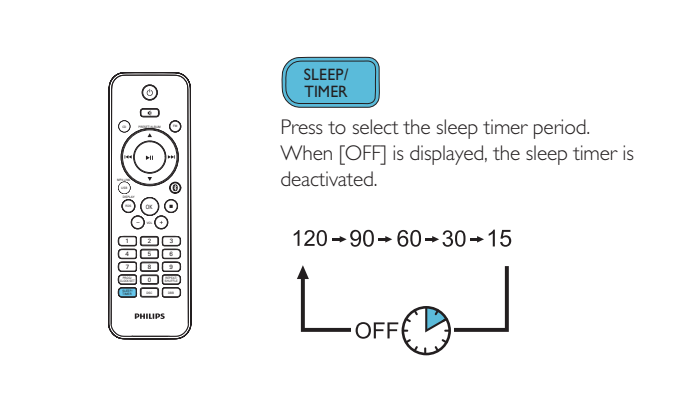


- 1 **FM**
 - 2 **PROG/CLOCK SET**
 - 3 **▲ / ▼**
- Press and hold to store FM radio stations automatically.
- ▲ / ▼ 3
Press to select a preset radio station number.

Store FM radio stations manually



- 1 **FM**
 - 2 **PROG/CLOCK SET**
 - 3 **PROG/CLOCK SET**
 - 4 **▲ / ▼**
 - 5 **PROG/CLOCK SET**
 - 6 **▲ / ▼**
 - 7 **▲ / ▼**
- Press and hold for 3 seconds to tune to a radio station with strong reception automatically.
- Press to tune to a radio frequency step by step.
- Press to activate manual storing.
- Press to allocate a preset number.
- Press to confirm a setting or selection.
- Press to select a preset radio station.
- RDS**
Press to display information of RDS stations.
- Switch between mono and stereo broadcast.



- Be careful not to adjust the volume continuously upwards as your hearing adapts.
- Do not turn up the volume so high that you can't hear what's around you.
- You should use caution or temporarily discontinue use in potentially hazardous situations.
- Excessive sound pressure from earphones and headphones can cause hearing loss.

2 Notice

Any changes or modifications made to this device that are not expressly approved by Philips Consumer Lifestyle may void the user's authority to operate the equipment.



This product complies with the radio interference requirements of the European Community.



Your product is designed and manufactured with high quality materials and components, which can be recycled and reused.



When this crossed-out wheeled bin symbol is attached to a product it means that the product is covered by the European Directive 2002/96/EC. Please inform yourself about the local separate collection system for electrical and electronic products. Please act according to your local rules and do not dispose of your old products with your normal household waste. Correct disposal of your old product helps to prevent potential negative consequences for the environment and human health.



Your product contains batteries covered by the European Directive 2006/66/EC, which cannot be disposed with normal household waste. Please inform yourself about the local rules on separate collection of batteries because correct disposal helps to prevent negative consequences for the environmental and human health.

Environmental information
All unnecessary packaging has been omitted. We have tried to make the packaging easy to separate into three materials: cardboard (box), polystyrene foam (buffer) and polyethylene (bags, protective foam sheet). Your system consists of materials which can be recycled and reused if disassembled by a specialized company. Please observe the local regulations regarding the disposal of packaging materials, exhausted batteries and old equipment.

This apparatus includes this label:



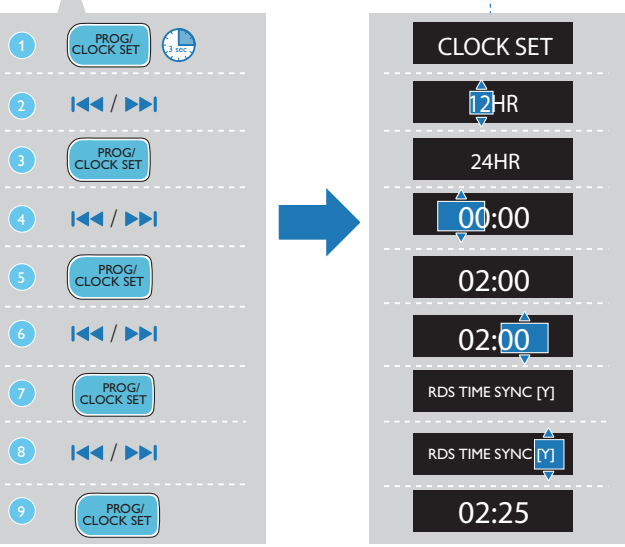
This is CLASS II apparatus with double insulation, and no protective earth provided. The Bluetooth® word mark and logos are registered trademarks owned by Bluetooth SIG, Inc. and any use of such marks by Philips is under license.



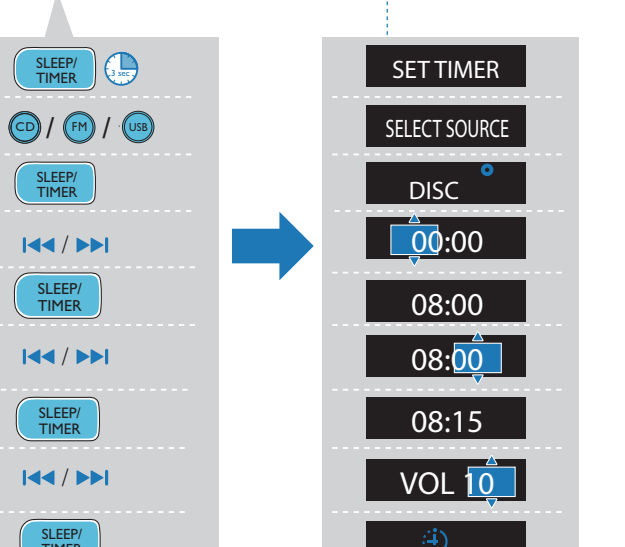
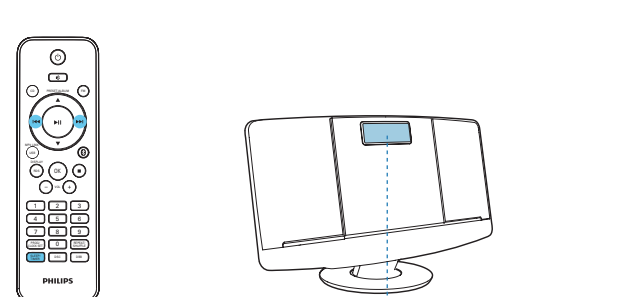
The making of unauthorized copies of copy-protected material, including computer programs, files, broadcasts and sound recordings, may be an infringement of copyrights and constitute a criminal offence. This equipment should not be used for such purposes.

Note

- The type plate is located on the back of the apparatus.



- 1 **PROG/CLOCK SET**
 - 2 **PROG/CLOCK SET**
 - 3 **PROG/CLOCK SET**
 - 4 **PROG/CLOCK SET**
 - 5 **PROG/CLOCK SET**
 - 6 **PROG/CLOCK SET**
 - 7 **PROG/CLOCK SET**
 - 8 **PROG/CLOCK SET**
 - 9 **PROG/CLOCK SET**
- In standby mode, press and hold to activate clock setting mode.
- Press to adjust 12/24 hour format, hour, minute and select whether to synchronize time with RDS stations.
- Press to confirm a selection.



- 1 **SLEEP/TIMER**
 - 2 **CD / FM / USB**
 - 3 **SLEEP/TIMER**
 - 4 **PROG/CLOCK SET**
 - 5 **SLEEP/TIMER**
 - 6 **PROG/CLOCK SET**
 - 7 **SLEEP/TIMER**
 - 8 **PROG/CLOCK SET**
 - 9 **SLEEP/TIMER**
- Press and hold to activate alarm setting mode.
- Press to select an alarm source.
- Press to confirm settings.
- Press to adjust the hour, minute and alarm volume.
- After alarm setting, press to activate or deactivate the alarm timer.



Product information is subject to change without prior notice.

Specifications

Maximum Output Power	15 W
Frequency Response	63 -14000 Hz, -3 dB
Signal to Noise Ratio	> 57 dBA
Total Harmonic Distortion	<1%
MP3 Link Input	650 mV RMS

Disc Diameter	12 cm/8 cm
Support Disc	CD-DA, CD-R, CD-RW, MP3-CD, WMA-CD

Tuning Range	87.5 - 108 MHz
Tuning Grid	50 KHz
Sensitivity	<22 dBf
- Mono, 26dB S/N Ratio	>51.5 dBf
- Stereo, 46dB S/N Ratio	<3%
Total Harmonic Distortion	>50 dBA
Signal to Noise Ratio	

Standard	Bluetooth Standard Version 2.1+EDR
Range	10m (free space)

AC Power	Model: AS190-090-B1190; Input: 100 - 240 V ~, 50/60 Hz, 0.7 A; Output: 9 V = 1.9 A
Operation Power Consumption	15 W
Standby Power Consumption	< 0.5 W
Dimensions - Main Unit (W x H x D)	400 x 235 x 98 mm
Weight - Main Unit	2.2 kg

1 Important

Warning

- Never remove the casing of this micro system.
- Never lubricate any part of this system.
- Never place this system on other electrical equipment.
- Never look into the laser beam inside this system.
- Keep this system away from direct sunlight, naked flames or heat.
- Make sure that you always have easy access to the power cord, plug or adaptor to disconnect the system from the power.

- Batteries (battery pack or batteries installed) shall not be exposed to excessive heat such as sunshine, fire or the like.
- Battery usage CAUTION – To prevent battery leakage which may result in bodily injury, property damage, or damage to the remote control:
 - Install all batteries correctly, + and - as marked on the remote control.
 - Do not mix batteries (old and new or carbon and alkaline, etc.).
 - Remove batteries when the remote control is not used for a long time.
- Make sure that there is enough free space around the product for ventilation.
- The system shall not be exposed to dripping or splashing.
- Do not place any sources of danger on the system (e.g. liquid filled objects, lighted candles).
- Where the plug of the Direct Plug-in Adapter is used as the disconnect device, the disconnect device shall remain readily operable.

Hearing safety



Caution

- To prevent possible hearing damage, do not listen at high volume levels for long periods. Set the volume to a safe level. The louder the volume, the shorter is the safe listening time.

Be sure to observe the following guidelines when using your headphones.

- Listen at reasonable volumes for reasonable periods of time.