

Quick start guide



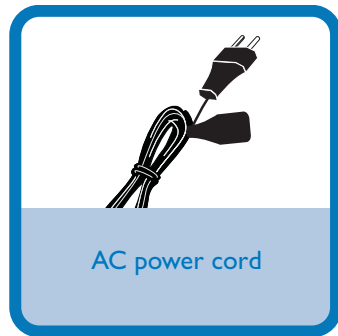
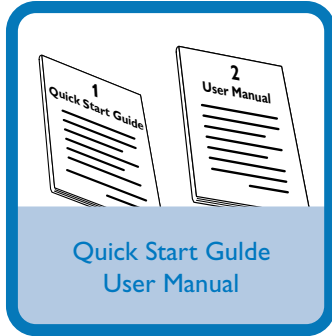
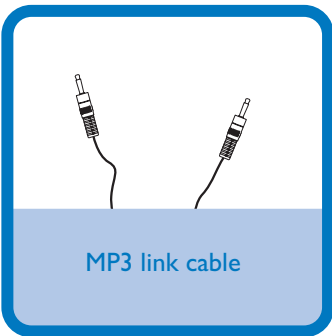
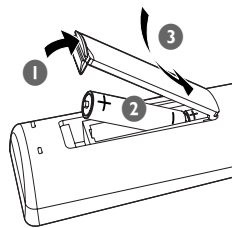
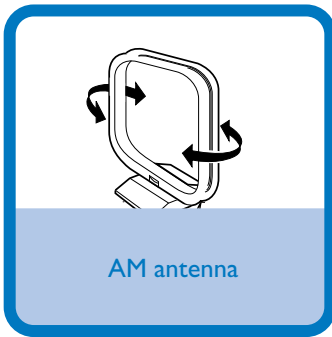
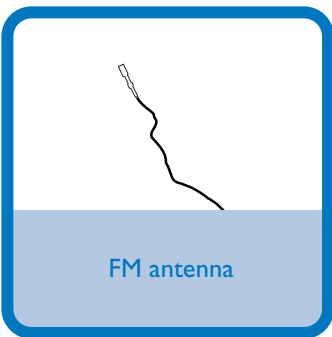
Step A *Connect*

Step B *Setup*

Step C *Enjoy*

What's in the Box?

You should find these items upon opening the box.

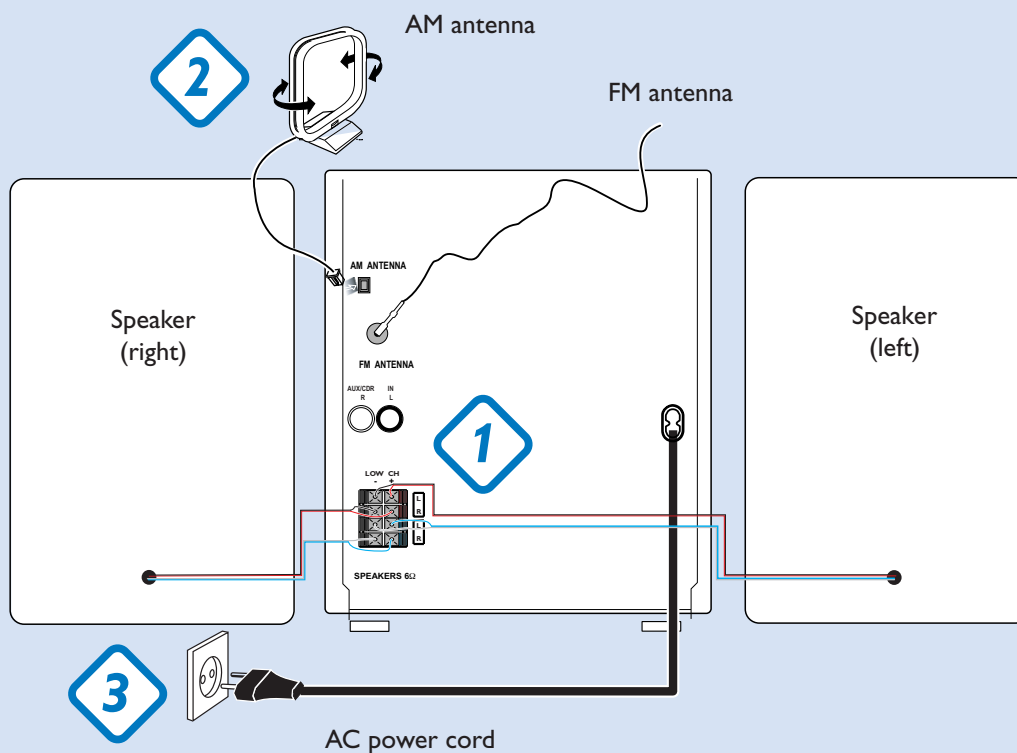


Step A *Connect*

- 1 Connect the speaker cables.
- 2 Connect the AM and FM antennas.
- 3 Connect the power cable of the system.

Tip

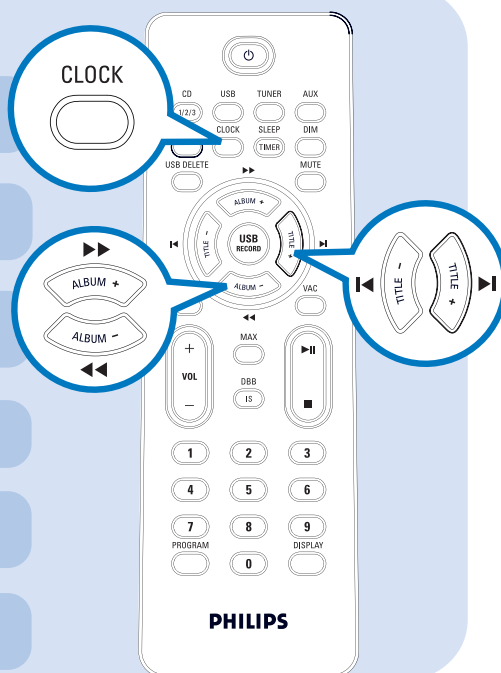
See the *User Manual* on how to connect other equipment to this system.



Step B *Setup*

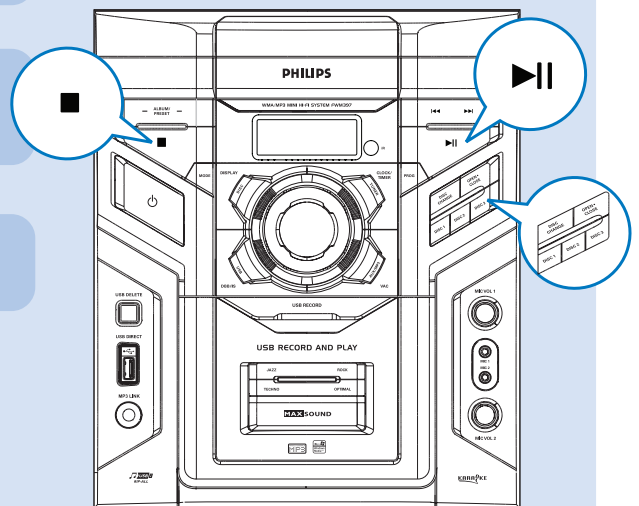
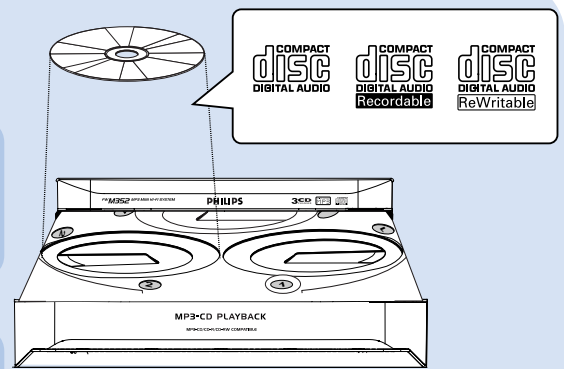
Setting the clock

- 1 In standby or view clock mode, press **CLOCK/TIMER** (or **CLOCK** on the remote control) once.
- 2 Press **ALBUM/PRESET +/-** (or **ALBUM +/-** (◀ / ▶)) on the remote control to select clock mode.
- 3 Press **CLOCK/TIMER** (or **CLOCK** on the remote control) again to activate and adjust clock time.
- 4 Press **ALBUM/PRESET +/-** (or **ALBUM +/-** (◀ / ▶)) on the remote control repeatedly to set the hour.
- 5 Press ◀◀ / ▶▶ (or **TITLE - / +** (◀ / ▶)) on the remote control repeatedly to set the minute.
- 6 Press **CLOCK/TIMER** (or **CLOCK** on the remote control) again to store the setting.



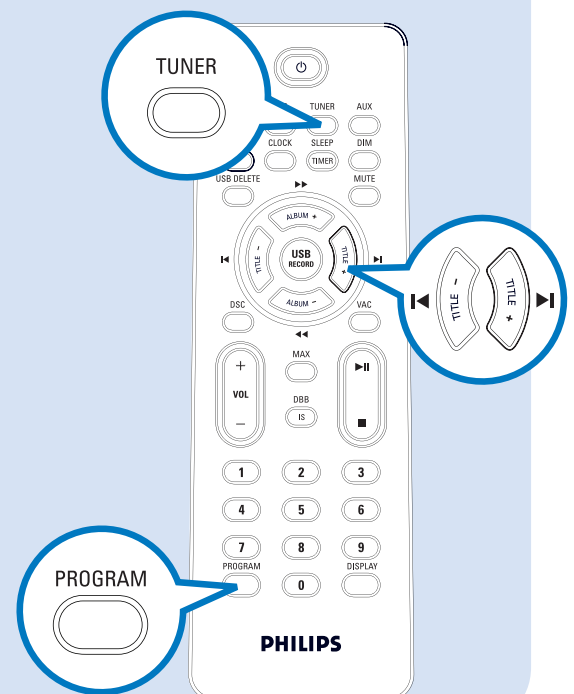
Playing a disc

- 1 Press **OPEN•CLOSE** to open the disc tray and load up to two discs on the individual disc trays. To load the third disc, press **DISC CHANGE**.
→ Make sure the label side of each loaded disc is facing up.
- 2 Press **OPEN•CLOSE** again to close the disc tray.
- 3 Use **DISC 1/2/3** (or **CD 1/2/3** on the remote control) to select a disc for playback.
- 4 To stop playback, press ■ .



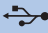
Programming and tuning to radio stations

- 1 Press **TUNER** repeatedly to select the tuner source.
- 2 Press **PROG** (or **PROGRAM** on the remote control) for more than two seconds to program all available stations in order of waveband.
- 3 Press **ALBUM/PRESET +/-** (or **TITLE - / +** (◀ / ▶) on the remote control) until the desired preset station is displayed.



Playing a USB mass storage device

With the Hi-Fi system, you can use USB flash memory (USB 2.0 or USB1.1), USB flash players (USB 2.0 or USB1.1), memory cards (requires an additional card reader to work with this Hi-Fi system).

- 1 Insert the USB device's USB plug into the socket  on the set.
- 2 Press **USB** to select the USB source.
- 3 Play the USB's audio files as you do with the albums/tracks on a CD,

Ripping function

- 1 Insert a USB mass device with sufficient free space to the **USB DIRECT**  socket on the set.
- 2 Prepare the source to record from.
- 3 Press **USB RECORD** to start ripping.
- 4 At any moment, simply press  to stop ripping.

Tip

Detailed playback features and additional functions are described in the accompany owner's manual.



© Royal Philips Electronics N.V. 2008
All rights reserved.

<http://www.philips.com>

