

Always there to help you

Register your product and get support at
www.philips.com/support



SB5200



User manual

PHILIPS



2014 © WOOX Innovations Limited. All rights reserved.
Philips and the Philips' Shield Emblem are registered trademarks of Koninklijke Philips N.V. and are used by WOOX Innovations Limited under license from Koninklijke Philips N.V.

SB5200_77_Short User Manual_EN_V1.0



Important

Safety

Only use attachments/accessories specified by the manufacturer.
Use only power supplies listed in the user manual.

The product shall not be exposed to dripping or splashing.

Do not place any sources of danger on the product (e.g. liquid filled objects, lighted candles).

Batteries (battery pack or batteries installed) shall not be exposed to excessive heat such as sunshine, fire or the like.

Where the plug of the Direct Plug-in Adapter is used as the disconnect device, the disconnect device shall remain readily operable.



Warning

- Never remove the casing of this apparatus.
- Never lubricate any part of this apparatus.
- Never place this apparatus on other electrical equipment.
- Keep this apparatus away from direct sunlight, naked flames or heat.
- Ensure that you always have easy access to the power cord, plug or adaptor to disconnect the apparatus from the power.

Compliance



Note

- The type plate is located on the back of the product.

Care of the environment

Environmental information

All unnecessary packaging has been omitted. We have tried to make the packaging easy to separate into three materials: cardboard (box), polystyrene foam (buffer) and polyethylene (bags, protective foam sheet.)

Your system consists of materials which can be recycled and reused if disassembled by a specialized company. Please observe the local regulations regarding the disposal of packaging materials, and old equipment.

Your product is designed and manufactured with high quality materials and components, which can be recycled and reused.



Please inform yourself about the local separate collection system for electrical and electronic products.

Please act according to your local rules and do not dispose of your old products with your normal household waste. Correct disposal of your old product helps to prevent potential negative consequences for the environment and human health. Please inform yourself about the local rules on separate collection of batteries because correct disposal helps to prevent negative consequences for the environmental and human health.

Always bring your product to a professional to remove the built-in battery.

Notice

The Bluetooth® word mark and logos are registered trademarks owned by Bluetooth SIG, Inc. and any use of such marks by Philips is under license.



Specifications are subject to change without notice. Trademarks are the property of Koninklijke Philips Electronics N.V or their respective owners. Philips reserves the right to change products at any time without being obliged to adjust earlier supplies accordingly.

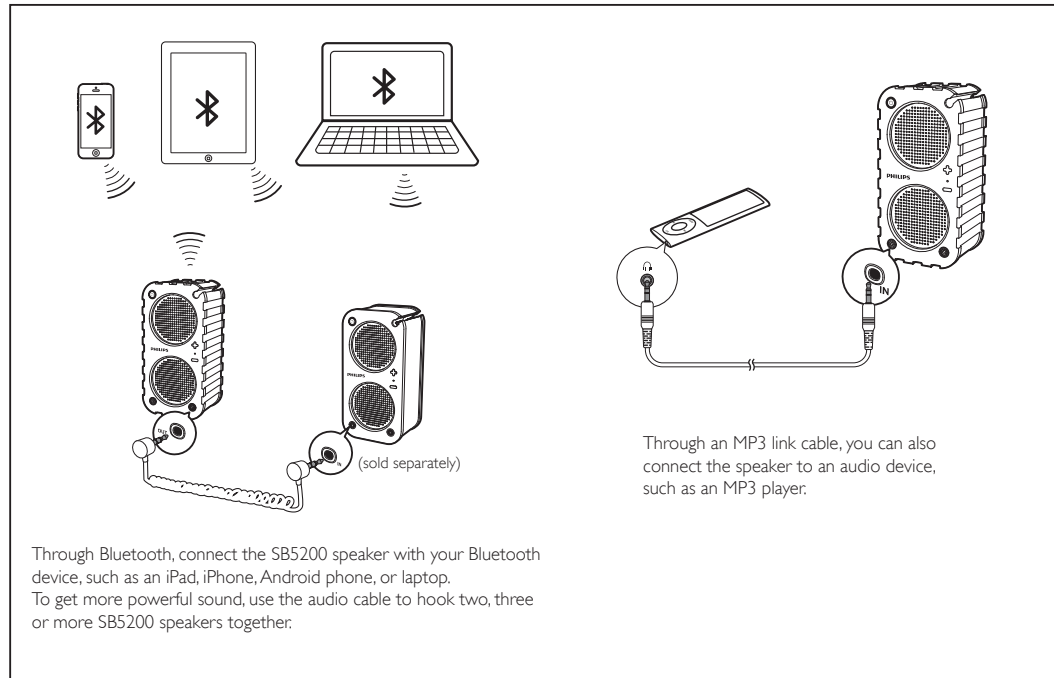
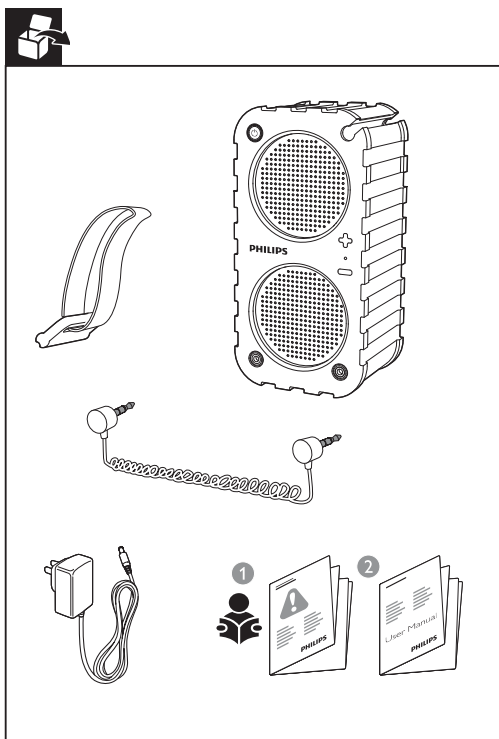
Specifications

Amplifier
Rated output power: 2 X 5 W/THD 10%
Signal to noise ratio: 65dB
AUDIO-IN: Input sensitivity 500 mV RMS

Bluetooth
Standard: Bluetooth Standard Version 2.1 + EDR
Frequency band: 2.402 ~ 2.480 GHz ISM Band
Range: 10 m (free space)

General information
Power supply
AC/DC adapter
 KSASB0241200150HU
 Input: 100-240V~ 50/60 Hz, 0.6 A
 Output: 12V DC, 1.5 A
7.4V, 1350 mAh Li-ion polymer internal rechargeable battery
Charging
 5V DC, 0.5 A for USB,

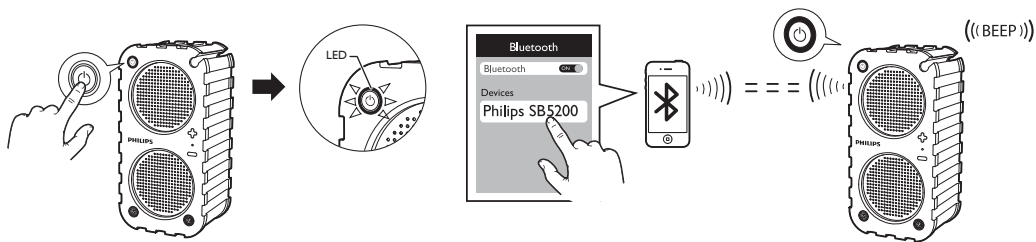
Maximum 0.7 A for power adapter (power off)
Power consumption (AC power)
 Operation: 10W
Temperature & Humidity
 0°C to 45°C, 5% to 90% Humidity for all climates (Operation) -40 °C to 70 °C, 5% to 95% (Storage)
Dimensions
 Main Unit (W x H x D): 176 x 88 x 70 mm
Weight
 Main Unit: 0.95 kg



Through Bluetooth, connect the SB5200 speaker with your Bluetooth device, such as an iPad, iPhone, Android phone, or laptop.
 To get more powerful sound, use the audio cable to hook two, three or more SB5200 speakers together.

Through an MP3 link cable, you can also connect the speaker to an audio device, such as an MP3 player.

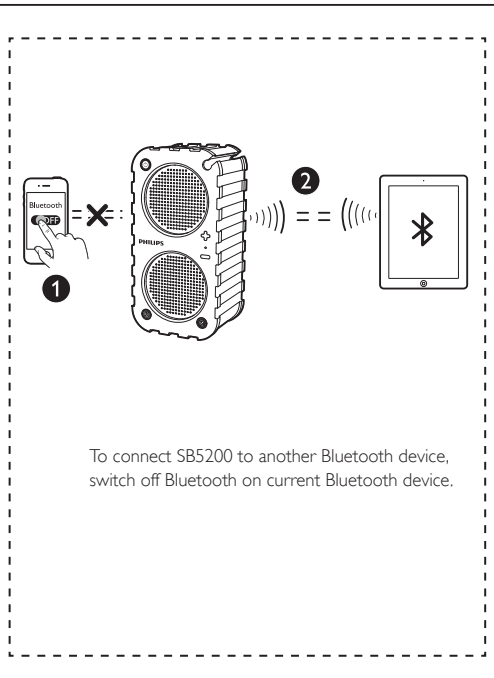
Switch on & Connect



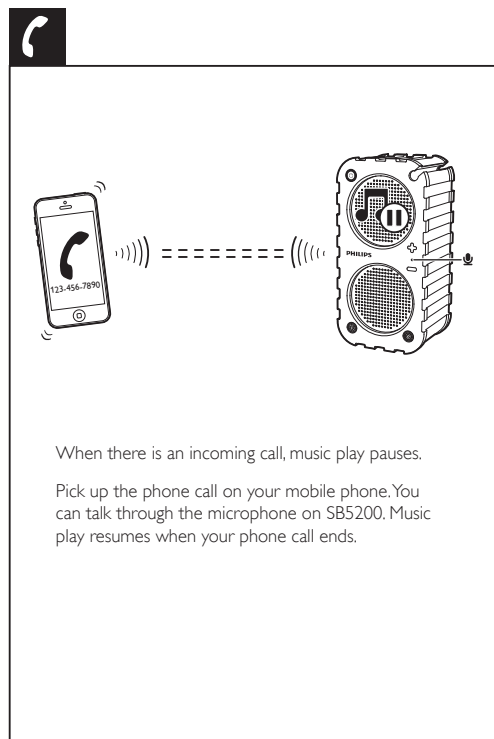
Press **⏻** to switch on. **Ready for pairing:** Blue light flashes. If there is no action on SB5200 for 5 minutes, SB5200 switches off automatically.

On your Bluetooth device, activate Bluetooth and search for **SB5200**.

Connected: Blue light is always on. Next time you switch on SB5200, the speaker connects to the last paired device automatically.



To connect SB5200 to another Bluetooth device, switch off Bluetooth on current Bluetooth device.

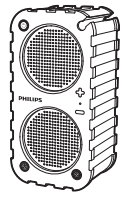


When there is an incoming call, music play pauses.

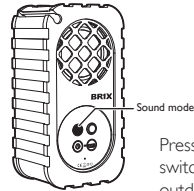
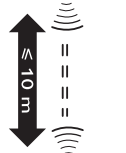
Pick up the phone call on your mobile phone. You can talk through the microphone on SB5200. Music play resumes when your phone call ends.



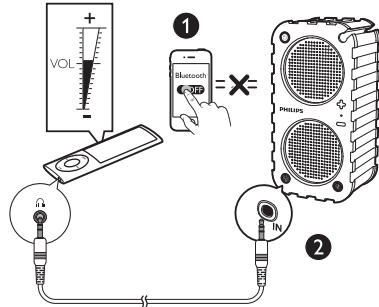
Play



The music streaming may be interrupted by obstacles between the device and SB5200, such as walls, or other devices nearby that operate in the same frequency.



Press the button repeatedly to switch between the indoor and outdoor sound effects.

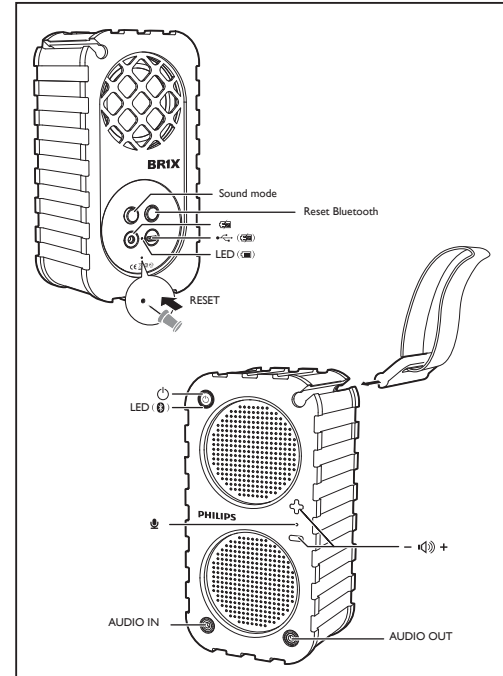
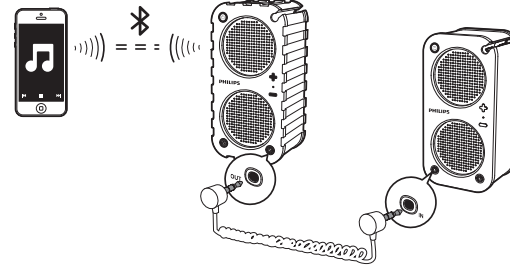


To play through the MP3 link cable, switch off Bluetooth on the Bluetooth device.

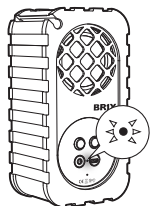
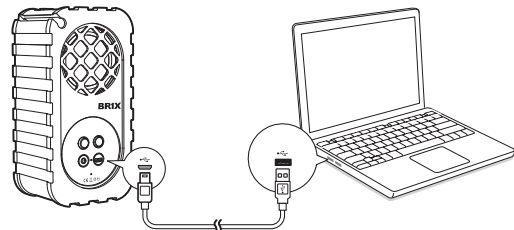
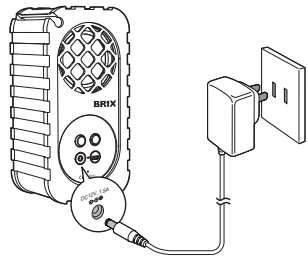
To play music from multiple speakers, do the following:

1. Use the audio cable to connect two speakers, one plug in the OUT socket and the other plug in the IN socket;
2. On the Bluetooth device, connect to a speaker.

The first speaker works as the master one. Select your sound options on the master speaker.



Charge



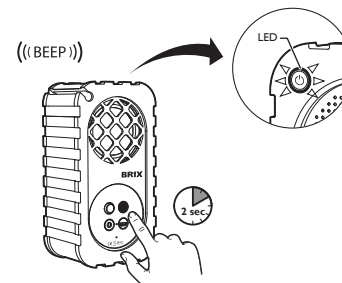
Battery low: Flashing red light

Charging ongoing: Green light always on

Charging complete: Light off

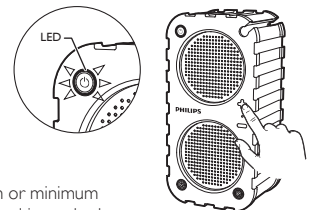
Note: During battery charging through the USB connector, music play on SB5200 reduces to a low volume level.

Reset Bluetooth



SB5200 can remember three paired devices. The fourth paired device will replace the first one. To clear the paired devices from your speaker, press and hold the button until the blue light flashes.

On the speaker, you enter the pairing mode. On the paired device, 1. unpair SB5200; 2. search for and connect Philips SB5200 again.



Maximum or minimum volume level is reached.

