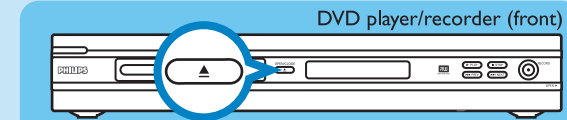
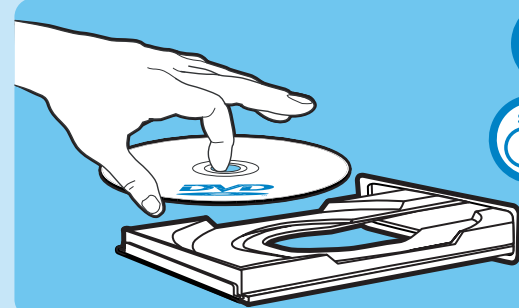


# 3 Enjoy

## Inserting discs



- 1 Press **OPEN/CLOSE** on the front of the recorder.



- 2 Place a DVD disc in the tray with the label facing up.
- 3 Press **OPEN/CLOSE** on the front of the recorder again.

## Playback

- 1 Press **UP** or **DOWN** to scroll through the list of options or titles.
- 2 Press **PLAY** on the title you want to play.
- 3 To stop press **STOP** .
- 4 Press **DISC MENU** to go back.

## Recording

- 1 For recording, place a blank DVD±RW or DVD±R disc in the tray with the label facing up and close the tray.
- 2 Press **REC SOURCE** repeatedly to select the source to record from.

**Note** This helps to select whether you want to record from the tuner or from any device connected through audio/video input connectors.

## Recording (continued)

- 3 Press **REC MODE** repeatedly to select the record mode.  
**Note** Choose from recording at high quality (available recording time is 1 hour), DVD quality (2 hours), VHS quality-extended play (4 hours) and VHS quality-super long play (6 hours).
- 4 Press **UP** or **DOWN** to scroll the channels, or press **0** to **9** to select the channel that you want to record.
- 5 Press **REC** to start recording, press **REC** again to automatically record 30 minutes.  
**Note** Every time you press **REC** , an additional 30 minutes is added to the recording time.
- 6 To end recording, press **STOP** . 'Update' will be displayed on the recorder.
- 7 To playback the recording, press **DISC MENU** , select the title and press **PLAY** .

## Types of discs used on this recorder

Type	Record	Playback	Edit
DVD±RW	✓	✓	✓
DVD±R	✓	✓	✓
DVD-RW	✓	✓	✓
DVD-R	✓	✓	✓
DVD VIDEO	✗	✓	✗
AUDIO CD	✗	✓	✗
VIDEO CD	✗	✓	✗
DATA CD	✗	✓	✗
DATA CD	✗	✓	✗

## Need help?

### User Manual

See the user manual that came with your DVD player/recorder.

### Online

go to [www.philips.com/support](http://www.philips.com/support)



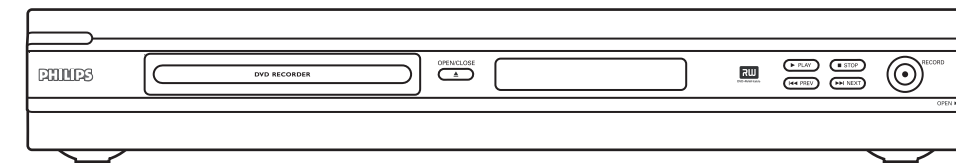
2005 © Koninklijke Philips N.V.  
All rights reserved.  
I2 NC 3139 246 17002  
[www.philips.com](http://www.philips.com)

# Quick Start Guide

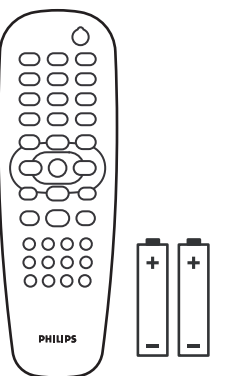


- 1 Connect
- 2 Set Up
- 3 Enjoy

## What's in the Box?



DVD Player/ Recorder



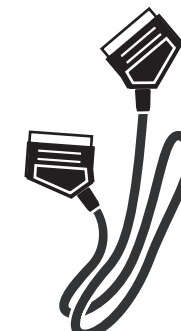
Remote control and 2 batteries



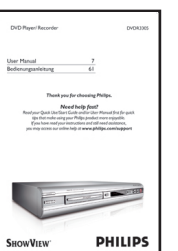
Quick Start Guide



RF Coaxial cable



SCART cable



User Manual

# PHILIPS

# 1 Connect

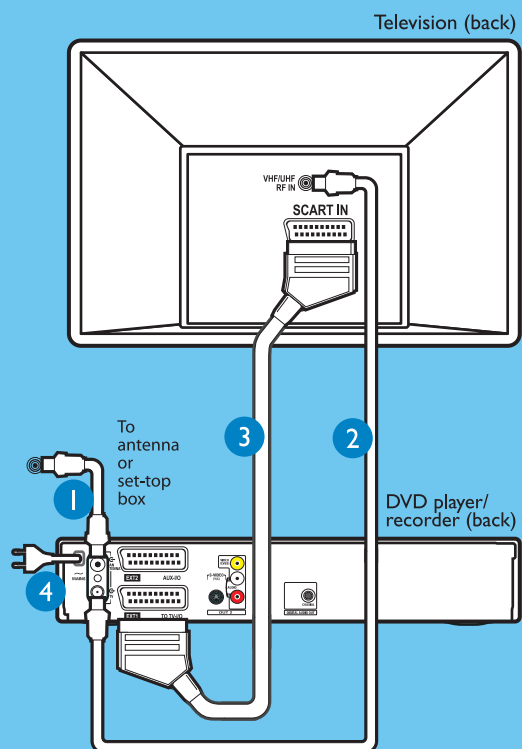
Start with the 'Basic Connections'.  
If you have a VCR, follow the instructions for 'Connection with a VCR or similar device'.

## Basic Connections

### A Before connecting

Unplug the antenna cable that is currently connected to your TV.

### B Connecting



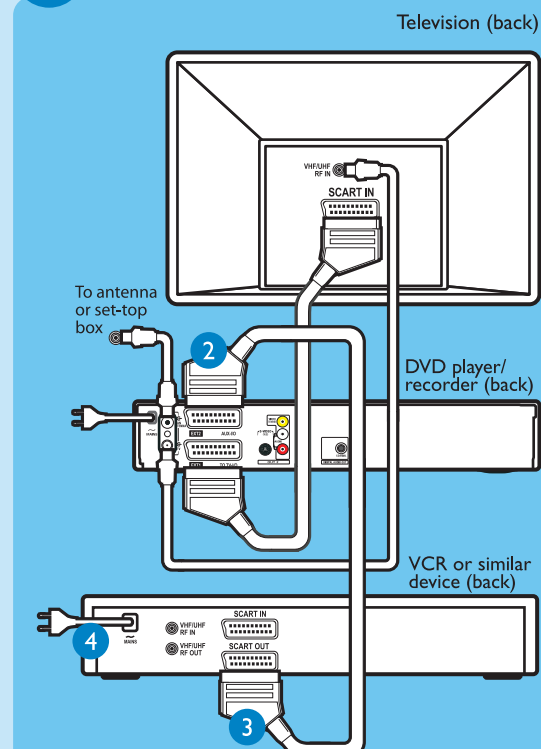
- 1 Connect the antenna cable to the **ANTENNA** socket on the recorder.
- 2 Use the supplied RF coaxial cable to connect the **TV** socket on this recorder to the Antenna In jack on the TV.
- 3 Use the scart cable to connect the **EXT1 TO TV-I/O** socket on the DVD recorder to the corresponding SCART input socket on the TV.
- 4 Connect the power cable from the recorder to an AC power outlet.

## Connection with a VCR or similar device

### A Before connecting

Your new Philips DVD recorder can replace the VCR for all your recording needs. First, unplug all the connections from your VCR.

### B Connecting



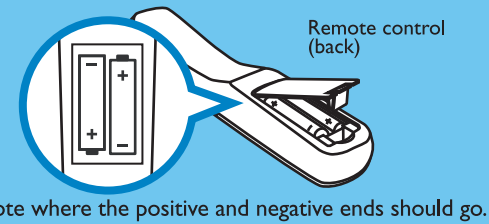
- 1 Follow steps 1 to 3 of 'B - Connecting' under 'Basic Connections' to connect the recorder before you proceed to step 2 below.
- 2 Use another RF coaxial cable (not supplied) to connect the **TV** socket on the DVD recorder to the antenna input socket on the TV.
- 3 Use another scart cable (not supplied) to connect the **EXT2 AUX-I/O** socket on the DVD recorder to the Scart output socket (or labelled as TV OUT or TO TV) on the VCR.
- 4 Connect the power cable from your VCR to an AC power outlet.

**Note** In this setup, the VCR cannot record TV programmes.

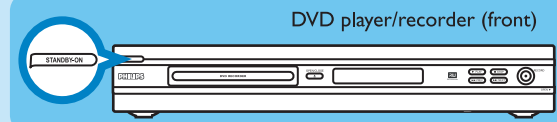
**For other connection diagrams, see the accompanying User Manual.**

# 2 Set Up

### A Inserting Batteries



### B Finding the viewing channel

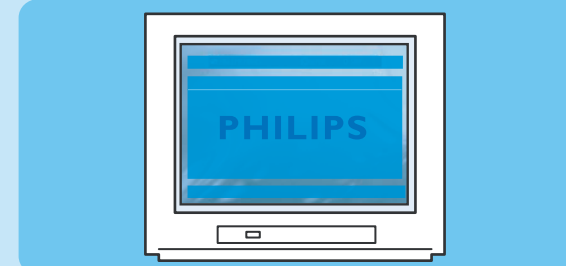


- 1 Press **STANDBY-ON** on the recorder.

- 2 Switch on the TV.

**Note** If connected to your VCR, make sure it is switched off or in standby mode before proceeding.

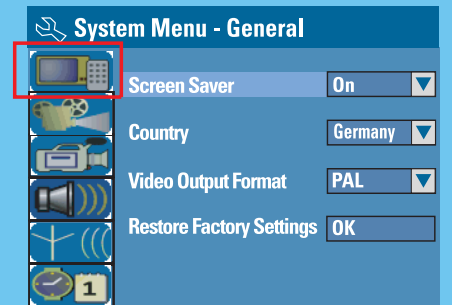
- 3 Press '0' on the TV's remote control, then press the DOWN keys repeatedly until you see the blue Philips DVD background screen. This is the correct viewing channel for the recorder.



**Note** You may press the AV or SELECT key on the TV's remote control (if available) to select the correct viewing channel. See your TV's user manual.

### C Initial Installation

- 1 Press **SYSTEM MENU** on the remote control.



**Note** Use UP and DOWN keys to toggle through the options. Select an item by pressing RIGHT. To confirm a setting, press OK.

- 2 Select the country of your residence.

- Highlight and press RIGHT. Select { **Country** } and press OK to confirm your selection.

- 3 Setup and install TV channels.

- Highlight and press RIGHT. Select { **Channel Search** } and press OK on the remote control to start automatic TV channel search.

- 4 Select the language

- Highlight and press RIGHT.
  - select TV On-Screen Display language.
  - select default Disc Menu language.
  - select default subtitle language.
  - select default audio language.

- 5 Select the date and time

- Highlight and press RIGHT. Use the **numeric keypad 0-9** to input the date/time, then press OK to confirm.

- 6 Press **SYSTEM MENU** to exit.