

# Always there to help you

Register your product and get support at  
[www.philips.com/welcome](http://www.philips.com/welcome)



SBT11BLK



## User Manual

**PHILIPS**

# Contents

---

<b>1</b>	<b>Important</b>	<b>3</b>
----------	------------------	----------

---

<b>2</b>	<b>Your Portable Speaker</b>	<b>3</b>
	Introduction	3
	What's in the box	3
	Overview of the speaker	4

---

<b>3</b>	<b>Get started</b>	<b>5</b>
	Charge the built-in battery	5
	Power on/off	5

---

<b>4</b>	<b>Use Bluetooth devices</b>	<b>6</b>
	Connect a device	6
	Play audio via Bluetooth	6
	Make a call	7

---

<b>5</b>	<b>Listen to an external device</b>	<b>7</b>
----------	-------------------------------------	----------

---

<b>6</b>	<b>Adjust volume</b>	<b>8</b>
----------	----------------------	----------

---

<b>7</b>	<b>Mute sound</b>	<b>8</b>
----------	-------------------	----------

---

<b>8</b>	<b>Product information</b>	<b>9</b>
	General information	9
	Bluetooth	9
	Amplifier	9

---

<b>9</b>	<b>Troubleshooting</b>	<b>9</b>
	General	9
	About Bluetooth device	10

---

<b>10</b>	<b>Notice</b>	<b>10</b>
	Care of the environment	10
	Trademark notice	11
	Copyright	11

# 1 Important

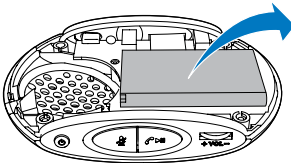
- Read these instructions.
- Heed all warnings.
- Follow all instructions.
- Do not use this apparatus near water.
- Do not install near any heat sources such as radiators, heat registers, stoves, or other apparatus (including amplifiers) that produce heat.
- Only use attachments/accessories specified by the manufacturer.
- Refer all servicing to qualified service personnel. Servicing is required when the apparatus has been damaged in any way, such as liquid has been spilled or objects have fallen into the apparatus, the apparatus has been exposed to rain or moisture, does not operate normally, or has been dropped.
- The battery shall not be exposed to excessive heat such as sunshine, fire or the like.
- Apparatus shall not be exposed to dripping or splashing.
- Do not place any sources of danger on the apparatus (e.g. liquid filled objects, lighted candles).



## Caution

- Removal of the built-in battery invalidates the warranty and may destroy the product.

Always bring your product to a professional to remove the built-in battery.



## Note

- The type plate is located on the back of the product.

# 2 Your Portable Speaker

Congratulations on your purchase, and welcome to Philips! To fully benefit from the support that Philips offers, register your product at [www.philips.com/welcome](http://www.philips.com/welcome).

## Introduction

With this speaker, you can

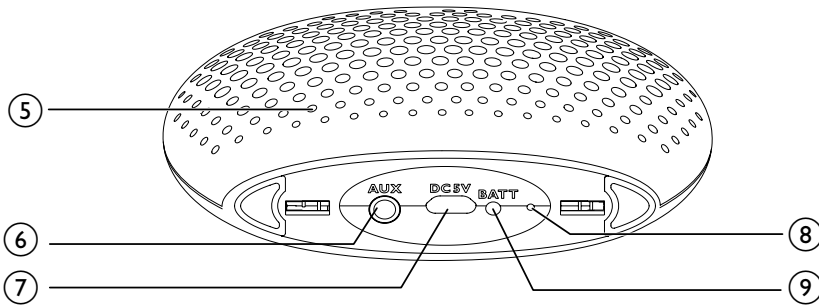
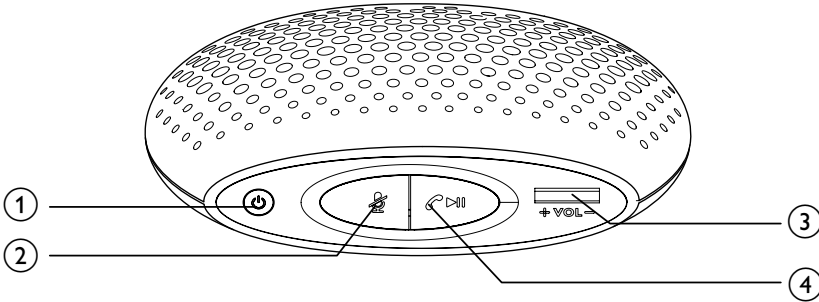
- listen to audio from an external device via Bluetooth connection,
- listen to audio from an external device through the **AUX** socket, and
- make phone calls.

## What's in the box

Check and identify the contents of your package:

- Main unit
- USB cable
- Short user manual

## Overview of the speaker



- ① **Power**
  - Power the portable speaker on or off.
- ② **Mute**
  - During a call, mute the integrated microphone or release it from mute status.
- ③ **+ VOL -**
  - Turn to adjust volume.
- ④ **Bluetooth control**
  - Start, pause, or resume play.
  - Press to answer an incoming call.
  - Press to end the current call.
  - Press and hold to reject an incoming call.
  - Press twice to dial the last called number.
  - Press twice to hold on the current call and answer another incoming call.
  - Press and hold for 8 seconds to clear the Bluetooth pairing information.
- ⑤ **Bluetooth indicator**
  - Indicate the current Bluetooth connection status.
- ⑥ **AUX**
  - Connect to an external player.
- ⑦ **DC 5V**
  - Recharge the built-in battery.
- ⑧ **Integrated microphone**
- ⑨ **BATT**
  - During charging, indicate the current charging status.

# 3 Get started

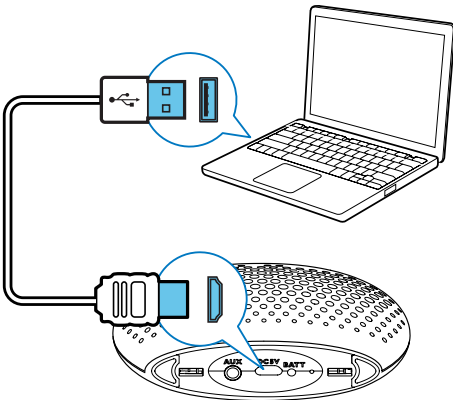
Always follow the instructions in this chapter in sequence.

## Charge the built-in battery

The speaker is powered by a built-in rechargeable battery.

### Note

- Before use, fully charge the built-in battery.



Connect the USB cable between

- the **DC 5V** socket on the speaker, and
- a USB socket of a computer.

### Charging indicator

The indicator on the bottom indicates the battery status during charging.

Indicator	Battery
Solid green	Under charging
Off	Fully charged

## Power on/off

Press **⏻**.

- If an audio input cable is connected to the **AUX** socket, this product does not automatically power off.
- In Bluetooth mode, if Bluetooth connection is invalid for 15 minutes, this product automatically powers off.

# 4 Use Bluetooth devices

With this speaker, you can listen to audio from a player and make a call through Bluetooth.

## Note

- Make sure that no audio input cable is connected to the **AUX** socket.
- Philips does not guarantee the compatibility with all Bluetooth devices.
- Before pairing a device with this system, read its user manual for Bluetooth compatibility.
- The product can memorize a maximum of 8 paired devices.
- Make sure that Bluetooth function is enabled on your device, and your device is set as visible to all other Bluetooth devices.
- The operational range between this system and a Bluetooth device is approximately 10 meters (30 feet).
- Any obstacle between this system and a Bluetooth device can reduce the operational range.
- Keep away from any other electronic device that may cause interference.



## Connect a device

- 1 On your device, search for Bluetooth devices.
- 2 In the device list, select **PHILIPS SBT11**.
  - If a message prompts for the permission for Bluetooth connection with **PHILIPS SBT11**, confirm it.
  - If a password is required, enter **0000** and then confirm.

### Bluetooth indicator

Indicator	Bluetooth connection
Blinking blue	Connecting or waiting for connection
Solid blue	Connected

### To switch off the Bluetooth indicator

- Press and hold  and  simultaneously for 2 seconds.

### To switch on the Bluetooth indicator again

- Press and hold  for 2 seconds.

## Disconnect a device

On your device, disable the Bluetooth connection with this product.


## Reconnect a device

- For a paired Bluetooth device on which the automatic reconnection is enabled, this product reconnects with it once it is detected.
- For a paired Bluetooth device that does not support the automatic reconnection, reconnect it with this product manually.



## Play audio via Bluetooth

### Note

- If the connected Bluetooth device supports the Advanced Audio Distribution Profile (A2DP), you can listen to tracks that are stored on the device through the system.
- If the device also supports the Audio Video Remote Control Profile (AVRCP), you can control play on this product.
- If the connected device does not support the AVRCP, control play on the connected device.

Buttons	Functions
	Start, pause, or resume play.
<b>+ VOL -</b>	Increase or decrease the speaker volume.

## Make a call

Buttons	Functions
	Press to answer an incoming call. Press to end the current call. Press and hold to reject an incoming call.
	Press twice to dial the last called number.
	Press twice to hold on the current call and answer another incoming call.
	Press and hold for 8 seconds to clear the Bluetooth pairing information.
	Mute the integrated microphone or release it from mute status.
<b>+ VOL -</b>	Increase or decrease the speaker volume.

## 5 Listen to an external device

You can also listen to an external audio device, for example, MP3 player, through this product.




- 1 Connect an audio input cable with a 3.5 mm connector on both ends between
  - the **AUX** socket on this product, and
  - the headphone socket on the external device.
- 2 Play audio on the external device (refer to its user manual).

## 6 Adjust volume

Turn the **+ VOL -** wheel.

## 7 Mute sound

Press  to mute/unmute the integrated microphone.

↳ The Bluetooth indicator starts blinking.

# 8 Product information

## Note

- Product information is subject to change without prior notice.

## General information

Power Supply (through USB socket)	5V, 0.6A
Built-in Battery	Lithium battery
Dimensions - Main Unit (W x H x D)	107 x 73 x 53 mm
Weight - Main Unit	0.125 kg

## Bluetooth

Bluetooth specification	V2.1+EDR
Supported profiles	HFP v1.6, A2DP v1.2, HSP v1.2
Range	10 m (Free space)

## Amplifier

Rated Output Power	1.2 W RMS
Signal to Noise Ratio	> 62 dBA
AUX Input	600 mV RMS, 22 kOhm

# 9 Troubleshooting

## Warning

- Never remove the casing of this device.

To keep the warranty valid, never try to repair the system yourself.

If you encounter problems when using this device, check the following points before requesting service. If the problem remains unsolved, go to the Philips Web page ([www.philips.com/support](http://www.philips.com/support)). When you contact Philips, make sure that the device is nearby and the model number and serial number are available.

## General

### No power

- Recharge your speaker.

### No sound

- Adjust volume on this product.
- Adjust volume on the connected device.
- When you listen to audio through Bluetooth, make sure that no audio input cable is connected to the **AUX** socket.
- Make sure that your Bluetooth device is within the effective operational range.

### No response from the speaker

- Restart the speaker.

---

## About Bluetooth device

### **The audio quality is poor after connection with a Bluetooth-enabled device.**

- The Bluetooth reception is poor: Move the device closer to this product or remove any obstacle between them.

### **Cannot connect with the device.**

- The Bluetooth function of the device is not enabled. Refer to the user manual of the device for how to enable the function.
- This product is already connected with another Bluetooth-enabled device. Disconnect that device and then try again.

### **The paired device connects and disconnects constantly.**

- The Bluetooth reception is poor: Move the device closer to this product or remove any obstacle between them.
- For some devices, Bluetooth connection may be deactivated automatically as a power-saving feature. This does not indicate any malfunction of this product.

## 10 Notice

Any changes or modifications made to this device that are not expressly approved by Philips Consumer Lifestyle may void the user's authority to operate the equipment.

---

## Care of the environment

Your product is designed and manufactured with high quality materials and components, which can be recycled and reused.

Never dispose of your product with other household waste. Please inform yourself about the local rules on the separate collection of electrical and electronic products and batteries. The correct disposal of these products helps prevent potentially negative consequences on the environment and human health.

Your product contains batteries, which cannot be disposed of with normal household waste. Please inform yourself about the local rules on separate collection of batteries. The correct disposal of batteries helps prevent potentially negative consequences on the environment and human health.

Please visit [www.recycle.philips.com](http://www.recycle.philips.com) for additional information on a recycling center in your area.

### **Environmental information**

All unnecessary packaging has been omitted. We have tried to make the packaging easy to separate into three materials: cardboard (box), polystyrene foam (buffer) and polyethylene (bags, protective foam sheet.)

Your system consists of materials which can be recycled and reused if disassembled by a specialized company. Please observe the local regulations regarding the disposal of packaging materials, exhausted batteries and old equipment.

---

## Trademark notice

The Bluetooth® word mark and logos are registered trademarks owned by Bluetooth SIG, Inc. and any use of such marks by Philips is under license.

---

## Copyright

2013 © Koninklijke Philips Electronics N.V. Specifications are subject to change without notice. Trademarks are the property of Koninklijke Philips Electronics N.V or their respective owners. Philips reserves the right to change products at any time without being obliged to adjust earlier supplies accordingly.



Specifications are subject to change without notice  
© 2013 Koninklijke Philips Electronics N.V.  
All rights reserved.

SBT11BLK\_93\_UM\_V1.0

